



# EXECUTIVE DIRECTOR'S REPORT



## Delivering on Our Promises

Alameda CTC continues to advance a comprehensive approach to improving mobility, safety, and access throughout Alameda County. This month's updates highlight key progress across the agency's work, including upcoming projects on the I-680 and I-580 corridors, continued growth of the Student Transit Pass Program, and bikeway improvements in the City of Fremont.

Alameda CTC remains committed to responsible stewardship of public funds through ongoing oversight and ensuring funds are invested in our communities including through the 2028 Comprehensive Investment Plan, which is addressed on page 3 in this report. Thank you for your partnership as we work together to make Alameda County safer, better connected, and more accessible for all.

Sincerely,  
Tony Tavares, Executive Director

### I-680 and I-580 Corridor Improvements Advance Mobility and Reliability

Alameda CTC has made significant progress on capital projects along the I-680 and I-580 corridors to improve traffic flow, address safety, and expand options for all travelers.

One of these efforts is the I-580/I-680 Interchange Project, which is moving into the Project Approval/Environmental Document (PA/ED) phase. To address operational and safety challenges while preserving flexibility for larger scale solutions in the future, the PA/ED phase will study a range of improvement options, including short, medium, and long-term projects. It will also explore improvements for transit and access for local drivers to ensure the project supports a variety of travel needs.

The other project is the I-680 Northbound Express Lane Gap Closure Project, which will close the final gap in the northbound express lanes on I-680. Currently entering the design phase, this project will provide a continuous express lane upon completion, helping reduce delays and improve trips for northbound travelers.

Earlier in February, Alameda CTC, in partnership with Caltrans, marked a major milestone with the opening of the I-680 southbound express lane between Alcosta Boulevard and SR 84. The new lane is now open to traffic, and tolling is expected to begin later this year. This project expands the region's express lane network and makes travel times more reliable along the I-680 corridor.

Together, the I-680 and I-580 projects reflect continued successful partnership with Caltrans and ongoing investments that support regional mobility and safety.

More information about this and other Alameda CTC projects can be found on the agency's [Projects webpage](http://www.alamedactc.org/programs-projects). ([www.alamedactc.org/programs-projects](http://www.alamedactc.org/programs-projects))

## Bike Month Inspires Active Transportation Across Schools

As part of May's National Bike Month, Alameda CTC's Safe Routes to Schools (SR2S) Program celebrated Bike to School Day on Thursday, May 14. Participating schools received free resources to encourage and celebrate safe biking. Students and families across the county rode to school, renewing their commitment to active travel options like biking, scootering, skating, skateboarding, and using wheelchairs and other assistive mobility devices. Walking was also encouraged to ensure all students enjoyed the celebration.

Bike to School Day is one of four large scale annual SR2S events designed to maintain students' enthusiasm for active and shared transportation. The event coincides with the Bay

Area's biggest day for biking, Bike to Wherever Day (formerly Bike to Work Day), which offers community events and free bike classes throughout the month of May. This year, ten SR2S participating high schools hosted Energizer Stations in partnership with Bike East Bay to distribute 200 commemorative tote bags and festive resources and giveaways. This growing collaboration highlights SR2S efforts to encourage the next generation of active and shared transportation users. Learn more about this year's event [here](https://www.alamedactc.org/sr2s-bike-to-school-day-2026).



Bike to School Day 2025, Malcolm X Elementary School in Berkeley.

## Safe Routes to Schools' Golden Sneaker Contest Engages Thousands of Students

More than 15,500 students from over 88 schools participated in this year's Golden Sneaker Contest, a countywide initiative hosted by Alameda CTC's Safe Routes to Schools (SR2S) Program. Each spring, this initiative encourages students to walk, bike, roll, carpool or take transit to school to promote safer travel, reduce congestion and emissions near schools, and support student health and physical activity. Participants earn points for using active and shared transportation modes, with classrooms tracking participation throughout the two-week event.



Students at Christensen Middle School in Livermore, winner of the 2026 Platinum Sneaker.

Last month the Commission awarded the Platinum Sneaker to Christensen Middle School in the Livermore Valley Joint Unified School District for achieving the highest average classroom participation. Commissioner and Livermore Mayor John Marchand traveled to the school to present the Platinum Sneaker trophy in person. Students and classrooms across the county were recognized for their efforts, with each school's winning class earning a Golden Sneaker trophy and gold shoelaces. Learn more about this year's contest [here](https://www.alamedactc.org/winner-announced-safe-routes-to-schools-golden-sneaker-contest-2026).

## LOCAL FUNDING HIGHLIGHT: Fremont Bikeway Project Enhances Safety and Connectivity Along Key Corridor

The City of Fremont's Fremont Boulevard/Walnut Avenue Bikeway Project is currently under construction on the Walnut Avenue segment. Supported with \$1.1 million in Measure BB funding, the project will extend a 1.88-mile elevated bikeway along Walnut Avenue and Fremont Boulevard, replacing existing on-street bike lanes with protected cycle tracks. Specific improvements include new protected intersections that remove unsafe turn lanes, shorten pedestrian crossings, and create shared elevated spaces for cyclists and pedestrians.

Additional upgrades include improved traffic signals with video detection, increased time for pedestrian crossing, enhanced LED lighting, and a new rapid flashing beacon at Walnut Avenue and California Street.

## 2028 Comprehensive Investment Plan Update

Alameda CTC's 2028 Comprehensive Investment Plan (2028 CIP) is launching this summer in close coordination with the region's One Bay Area Grant Program Cycle 4 (OBAG 4) with funding from Measure BB, Vehicle Registration Fee and Transportation Fund for Clean Air programs. Approximately \$200 million in funding is expected to be available for transportation projects ranging from Safe Routes to Schools improvements, community-based projects, large scale transit improvements, and bicycle and pedestrian improvements. A combined call for project nominations is scheduled for release this month, with applications due on July 27, 2026.



## Student Transit Pass Program Reaches Full Scale

This year, the [Student Transit Pass Program](#) achieved a major milestone, completing its multi-year expansion process and operating at full scale for the first time. The program now serves over 160 schools across 17 school districts in Alameda County, with nearly 37,000 students currently participating. During the 24/25 school year, participants took over 2.17 million bus trips.

Building on this strong foundation, the program has continued to expand access and refine delivery to better serve students across the county. In January 2026, Alameda CTC expanded eligibility to all middle and high school students in Hayward Unified, San Leandro Unified, and San Lorenzo Unified school districts regardless of household income, making the program accessible to an estimated 4,900 additional students. Looking ahead, staff will prioritize outreach around the universal eligibility expansion, as well as timelines for card production and issuance to ensure students can access their passes quickly and reliably. ([www.alamedactc.org/programs-projects/studentpass](http://www.alamedactc.org/programs-projects/studentpass))

## Committee Activities

The **Bicycle and Pedestrian Committee (BPAC)** received updates on April 30 regarding Alameda CTC's Central County Community Connections Plan, and reviewed the Complete Streets Checklists for six projects seeking regional discretionary funding, including:

- East Bay Greenway Multimodal-Hayward Segment
- Dublin's 2026 Pedestrian and ADA Improvements
- Hayward's I-880/A Street Interchange Improvements and Quick-Build Bicycle and Pedestrian Safety Project
- Livermore's East Avenue Corridor ATP Implementation Project
- Newark's Safe Routes to Schools Improvements Project

The **Alameda County Technical Advisory Committee (ACTAC)** received reports on May 7 regarding the 2026 Comprehensive Investment Plan Update, 2028 Comprehensive Investment Plan/One Bay Area Grant Cycle 4 Programming Guidelines, and the Local Business Contract Equity Program.

### Agency Activities

In May, the following events were either hosted, sponsored or participated in by Alameda CTC:

- May 1 – Caltrans Calmentor Luncheon
- May 2 – 4CP Design Workshop, Hayward Area Senior Center
- May 4-7 – Women In Transportation (WTS) Annual Conference, Los Angeles
- May 7 – South Bay Engineers Club Express Lane Presentation
- May 12-15, National Association of City Transportation Officials (NACTO) Annual Conference, Minneapolis, MN
- May 14-15 – California Transportation Commission Meeting, San Jose, CA
- May 16 – 4CP Guiding Walking Tour, Castro Valley
- May 23 – 4CP Pop Up Booth, San Leandro Bayfair Farmers' Market

### Bike Mobile Events

- April 23 – Knowledge Enlightens You (KEY) Academy, Hayward
- April 30 – Hillview Crest Elementary, Hayward
- May 2 – Ruby Bridges Elementary, Alameda
- May 5 – Washington Elementary, San Leandro
- May 7 – Yu Ming Charter, Oakland, San Leandro
- May 11 – Oakland High, Oakland
- May 12 – Amelia Earhart Elementary, Alameda
- May 15 – San Lorenzo High, San Lorenzo
- May 16 – Manzanita SEED Elementary, Oakland
- May 18 – Longfellow Arts and Technology Middle, Berkeley
- May 19 – The Academy of Alameda, Alameda
- May 20 – Thornhill Elementary, Oakland

### Contracting Opportunities

Alameda CTC anticipates upcoming solicitations or has active listings for the following professional services or construction contracts:

#### Professional Services

- I-580/I-680 Interchange Project PA/ED (open June '26)
- On-Call Planning and Engineering Services (open July '26)
- Information Technology Support Services (open September '26)
- Transportation Demand Management Coordination Services (open November '26)

#### Construction

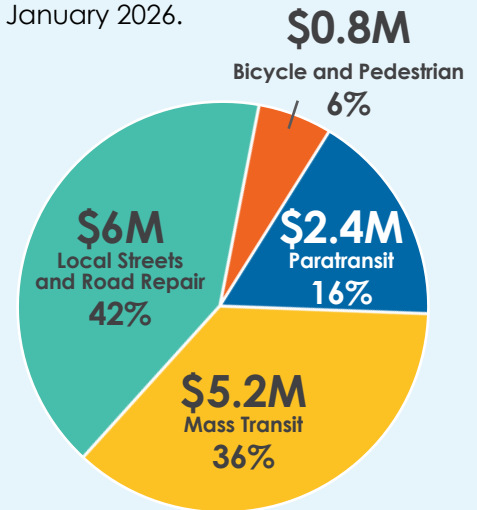
- East Bay Greenway Multimodal North Segment, San Leandro – Broadmoor Boulevard to E. 14th Street (open May '26)
- San Pablo Avenue Parallel Bike Improvements (open July '26)
- East Bay Greenway Multimodal North Segment, Lake Merritt to Fruitvale BART Segment (open August '26)

### Investing in Our Communities

Alameda CTC supports the future of Alameda County by equitably investing in projects and programs throughout the county to improve transportation.

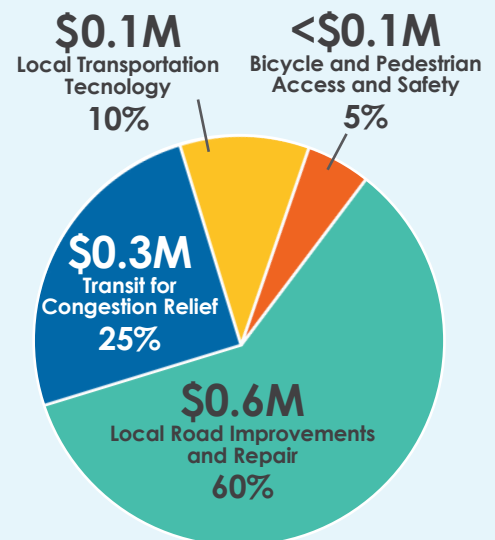
#### Measure BB Program Distributions (Jan '26)

Measure BB direct local distributions since April 2015. More than \$1.10 billion has been distributed. Over \$14 million in Direct Local Distribution Funds were distributed for sales tax revenues collected in January 2026.



#### Vehicle Registration Fee (Jan '26)

Over \$1 million in vehicle registration fees was collected in January 2026. Since 2011, Alameda CTC has distributed more than \$98.6 million of these fees for local road improvement and repair.



### STAY CONNECTED WITH ALAMEDA CTC

Sign up for our e-newsletter to receive project updates, engagement opportunities, and the latest from Alameda CTC.



**Subscribe today!**  
Scan the QR code or visit us at [bit.ly/AlamedaCTCSubscribe](https://bit.ly/AlamedaCTCSubscribe)

Visit [Alameda CTC's Meetings webpage](#) for details on upcoming meetings. (<https://www.alamedactc.org/all-meetings>)



To request free language assistance, call 510-208-7400, visit [www.alamedactc.org/Title-VI](http://www.alamedactc.org/Title-VI) or email [TitleVI@alamedactc.org](mailto:TitleVI@alamedactc.org)