

ALAMEDA
County Transportation
Commission

2025 Delivering on *Momentum*

ALAMEDA CTC 2025 ANNUAL REPORT



Alameda CTC Commissioners

Commission Chair
Supervisor David Haubert, *District 1*

Commission Vice Chair
City of Alameda Mayor
Marilyn Ezzy Ashcraft

Alameda County Supervisors
Supervisor Elisa Márquez, *District 2*
Supervisor Lena Tam, *District 3*
Supervisor Nate Miley, *District 4*
Supervisor Nikki Fortunato Bas, *District 5*

AC TRANSIT
Director - District At-Large Joel B. Young

BART
President Melissa Hernandez

City of Albany
Councilmember Preston Jordan

City of Berkeley
Councilmember Terry Taplin

City of Dublin
Mayor Sherry Hu

City of Emeryville
Vice Mayor Matthew Solomon

City of Fremont
Mayor Raj Salwan

City of Hayward
Mayor Mark Salinas

City of Livermore
Mayor John Marchand

City of Newark
Mayor Michael K. Hannon

City of Oakland
Councilmember Carroll Fife
Councilmember At-Large
Rowena Brown

City of Piedmont
Vice Mayor Conna McCarthy

City of Pleasanton
Mayor Jack Balch

City of San Leandro
Mayor Juan González, III

City of Union City
Mayor Gary Singh

Representing all corners of Alameda County, our 22-member Commission works collaboratively to PLAN, FUND and DELIVER projects and programs that transform transportation, advance equity, and promote sustainability. As we enter a second decade of Measure BB funding, we are building a strong foundation to shape the future of mobility. Every year, Alameda CTC investments create jobs, strengthen connections, and enrich communities for generations to come.

Table of Contents

02 Alameda CTC Commissioners

03 Executive Director's Letter

04 Measure BB: Celebrating a Decade of Progress

06 Delivering on Momentum

- 06 Planning
- 06 Projects
- 07 Programs
- 07 Express Lanes

08 Financial Accountability

- 08 Revenues and Expenditures
- 08 Documenting Alameda CTC's Financial Accountability



Alameda CTC is dedicated to ensuring an inclusive, accessible, and equitable experience for all individuals. This document has been designed and remediated to comply with ADA standards, Section 504 of the Rehabilitation Act, and aligns with our Title VI Civil Rights Program.



Scan the QR code or visit <https://www.alamedactc.org/title-vi> to learn more about Alameda CTC's Title VI Civil Rights Program.



Tony Tavares
Executive Director,
Alameda County Transportation Commission

The Alameda County Transportation Commission (Alameda CTC) is **DELIVERING ON MOMENTUM**, expanding access and improving mobility for communities across Alameda County. Powered by voter-approved sales tax Measure BB, which marked its 10-year anniversary in 2024, Alameda CTC is advancing transportation investments that enhance safety, improve travel efficiency, and strengthen access for all communities. Building on a robust track record of progress, strong partnerships and successful project delivery, Alameda CTC's long-term vision continues to take shape through real-world improvements that people who live, work and travel through Alameda County can experience every day.

Over the past year, Alameda CTC advanced projects and programs that strengthen the county's transportation system and respond to community needs. Major investments moved from construction to completion, including the **I-80/Gilman Interchange Project** in Berkeley. This milestone project improves safety and operations at the interchange, closes a longstanding gap in the **Bay Trail**, and expands bicycle and pedestrian access.

Alameda CTC reached key milestones on projects that strengthen regional mobility and enhance connections across major transportation corridors. Construction continued on the **I-680 Gap Project and I-580 Express Lanes toll system upgrade** to expand and enhance travel options along vital regional corridors. Progress also continued on the **SR-84/I-680 Interchange Improvement Project**, reaching construction milestones to improve safety and operations along a key route connecting the Tri-Valley and South Bay regions.

Alameda CTC also continued to invest in programs that directly benefit students and families. During the 2024–2025 school year, all eligible schools in Alameda County participated in the **Student Transit Pass Program**, enabling more than 31,500 students at 161 schools to take nearly 2.2 million transit trips using free bus passes. In the same year, the **Safe Routes to Schools** program expanded its reach to nearly 300 schools, supporting safer travel and healthier choices for students across Alameda County.

This progress reflects Alameda CTC's commitment to meaningful community engagement, working closely with residents, local jurisdictions, transit agencies, and community organizations to deliver investments to Alameda County's diverse communities. Each step forward reflects tangible gains in safety, economic vitality, and improved travel. Guided by strong partnerships and sustained by the vision of Alameda County voters, Alameda CTC remains focused on **delivering on momentum** to provide a transportation system that connects people, supports opportunity, and improves quality of life throughout the county.

Executive Director's Letter



Better Because of Measure BB

CELEBRATING A DECADE OF PROGRESS

We are here!

2014

Year **10** of 30

2044

Fiscal year 2024–25 marked the 10th year of investments funded by Measure BB.

Measure BB's 30-year journey is 10 years in

Building a better future for Alameda County

The fiscal year 2024–25 marked the 10th year of investments into Alameda County's transportation system through the 30-year transportation sales tax Measure BB, approved by voters in 2014. From safer streets to expanded transit options, Alameda CTC is driving progress toward a more accessible and inclusive transportation system. Now one-third of the way through the measure's 30-year duration, these investments support projects and programs for residents, workers, and visitors, demonstrating how sales tax dollars help build more vibrant, connected, and livable communities—and more is to come.



\$1.2 Billion+

INVESTED TO DATE

Funding roads, transit, bicycle and pedestrian paths, and paratransit for a connected county.



NEARLY **\$700 Million**

AWARDED TO LOCAL FIRMS

Jobs and contracts that keep dollars within the county through the Local Business Contract Equity Program.



\$450 Million

INVESTED IN LOCAL STREETS AND ROADS

Strengthening mobility across corridors, neighborhoods, and ensuring smoother travel for all.



OVER **300 Schools**

CONNECTED

Investing in education about walking and biking to school for safer, healthier ways to get to school.



7.7 Million Trips

INCREASING INDEPENDENCE AND ACCESS TO ESSENTIAL SERVICES

The Paratransit Program provides accessible rides that connect people to essential services and community life.

Alameda CTC has **delivered on momentum** for Alameda County by advancing planning, projects, programs, and effective Express Lanes management in fiscal year 2024-2025.

Keep reading for a few **HIGHLIGHTS** from our year of Transforming Mobility.

PLANNING

Focused on enhancing mobility throughout Alameda County, Alameda CTC **PLANNED** for transportation improvements that will enhance access, connect communities, and make travel safer.



PLANNING HIGHLIGHT

Approval of the CTP Policy Blueprint

The Policy Blueprint of the 2026 Countywide Transportation Plan was approved in October 2024, setting a clear vision for the future of transportation in Alameda County. It focuses on four core goals—safety, equity, climate, and economic vitality—to guide future transportation planning and investment decisions. Alameda CTC conducted extensive community engagement, including listening sessions, interviews, and focus groups, to gather input from a wide range of voices. In total, outreach efforts engaged more than 3,750 people across 21 events.

Building on this work, Alameda CTC also initiated the Paratransit Needs Assessment to evaluate current and future mobility needs of older adults and people with disabilities. In addition, the agency began updating the Countywide Active Transportation Plan to improve walking and bicycling safety, connectivity, and access throughout Alameda County.

PROJECTS

Alameda CTC **DELIVERED** projects to enhance travel for all forms of transportation, expand access to public transit, and upgrade local streets and roads to better serve pedestrians and bicyclists.



PROJECT HIGHLIGHT

Completion of the Gilman Street Interchange Improvement Project

In April 2025, the I-80/Gilman Street interchange was completed, marking the opening of a transformative multiuse project that delivers major safety and mobility improvements for all travelers. The project introduced two modern roundabouts, a new bicycle and pedestrian overcrossing over the freeway, and a street-level pathway that connects directly to the Bay Trail—closing a critical gap between Berkeley and Albany and connecting communities to the waterfront. Designed to reduce congestion and improve access for motorists, bicyclists, and pedestrians, the upgrades reflect strong collaboration among state, regional, and local partners and incorporate extensive community input. By prioritizing safe operations and multimodal travel and sustainability, this project addresses long-standing safety concerns and creates a safer, more efficient, and better-connected corridor for the region.



PROJECT HIGHLIGHT

State Route 84 / Interstate 680 Improvements

Construction advanced significantly on the State Route 84 (SR-84) / Interstate 680 (I-680) Interchange Improvements Project in FY 2024-25. Efforts include widening State Route 84 to four lanes to alleviate congestion between Sunol and Livermore. Work also progressed on the new SR-84 to northbound I-680 flyover connector, with crews building temporary support structures, the main bridge surface, and the connecting approach sections leading up to the bridge surface. Throughout the corridor, construction teams completed roadway paving, drainage systems, concrete barriers, retaining walls, and electrical infrastructure. These improvements enhance safety and traffic operations at this critical connection between SR-84 and I-680 in the Sunol Grade area, supporting more reliable travel for commuters, freight, and regional trips.

PROGRAMS

Alameda CTC **FUNDED** programs and services that enhance mobility and expand access for students, older adults, and individuals with disabilities.



PROGRAM HIGHLIGHT

Student Programs Expand

The Student Transit Pass Program (STPP) reached a major milestone in FY 2024-25: as of the 2024-25 school year, every eligible school in Alameda County is now participating in the program, with more than 31,500 students at 161 schools using the pass to take nearly 2.2 million trips on local and regional transit. By providing free and accessible transit options, STPP reduces transportation barriers for students and families while supporting equitable access to education and opportunities. The program also helps reduce traffic congestion around schools and encourages lifelong transit use among Alameda County's youth.



PROGRAM HIGHLIGHT

Safe Routes to Schools Program

The Safe Routes to Schools (SR2S) program continued to grow, reaching nearly 300 schools across Alameda County. The program partners with school communities to improve safety and access for students walking and biking to school through education, encouragement, and infrastructure support. Its signature events remained a cornerstone of engagement. In the spring of 2025, the Golden Sneaker Contest mobilized more than 15,000 students to try walking, biking, carpooling, or using transit. Thousands of students also participated in Bike to School Day, celebrating healthy and sustainable travel choices. These efforts reflect SR2S's commitment to reducing transportation barriers and fostering safe and active school commutes.

EXPRESS LANES

Alameda CTC also **EXPANDED** reliable travel options and **IMPROVED** Corridor performance by advancing key Express Lanes projects across Alameda County.



EXPRESS LANES HIGHLIGHT

Enhancing the Express Lanes Network

In 2024 and 2025, Alameda CTC advanced key Express Lanes projects to expand and improve reliable travel options on major regional corridors. Progress continued on the I-680 Express Lanes Project, with civil construction underway to extend the express lane system through a critical segment of the corridor. Alameda CTC and the California Department of Transportation (Caltrans) finalized an agreement to implement the toll system, and the project secured the necessary permitting to install tolling infrastructure. In parallel, the I-580 Toll System Upgrade Project began in early 2025 to replace aging toll system equipment and software. The project began the design phase, marking a key step toward modernized toll operations and more efficient express lane management.

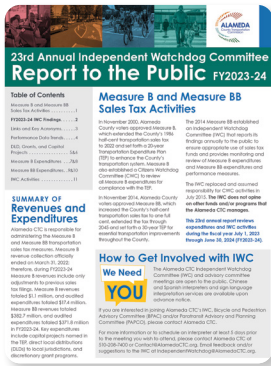
Financial Accountability

Alameda CTC's strong financial position in fiscal year 2024-25 enabled the agency to continue its longstanding work with transit agencies and local jurisdiction partners delivering transformative transportation improvements that strengthen connectivity, support economic growth, and enhance quality of life across Alameda County.

Documenting Alameda CTC's Financial Accountability



In September 2025, Alameda CTC was recognized for the 12th year in a row for its excellence in financial reporting by the Government Finance Officers Association of the United States and Canada (GFOA) for the year ended June 2024. This award - the Certificate of Achievement for Excellence in Financial Reporting, received for Alameda CTC's Annual Comprehensive Financial Report (ACFR) - is the highest form of recognition in the area of governmental accounting and financial reporting.



In August 2025, Alameda CTC's Independent Watchdog Committee (IWC) approved its 23rd Annual Report to the Public covering FY2023-2024 expenditures and IWC activities.



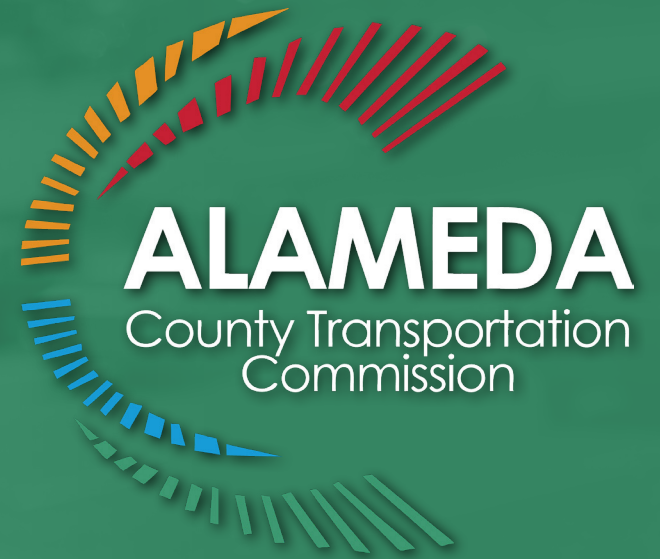
Scan the QR code or visit bit.ly/AlamedaCTC_2024IWCAnnualReport to view the report.

Revenues and Expenditures

REVENUES	
Sales tax - 2000 Measure B	29,715
Sales tax - 2014 Measure BB	15,560,694
Project revenue	2,876,882
Member agency contributions	1,694,132
Toll and toll violation revenue	-
Vehicle registration tax	-
Investment income	7,677,923
Other income	34
Total Revenues	27,839,380
Expenditures	
Current Administrative	
Salaries and benefits	5,538,279
Office rent	46,525
Professional services	1,640,558
Planning and programming	1,159,646
Other	1,493,116
Transportation improvements	
Highways and streets	-
Public transit	-
Local transportation	-
Community development investments	-
Congestion management	
Debt service	
Principal	728,925
Interest	401,300
Total Expenditures	11,008,349
Excess/(Deficiency) of Revenues Over/(Under) Expenditures	16,831,031
Other Financing Sources/(Uses)	
Transfer in	-
Transfer out	-
Total Other Financing Sources/(Uses)	-
Net Changes in Fund Balances	16,831,031
Fund Balances - Beginning	138,679,461
Fund Balances - Ending	\$155,510,492

Financial Accountability

General Fund	2014 Measure BB Special Revenue Fund	2000 Measure B Capital Projects Fund	1986 Measure B Capital Projects Fund	2014 Measure BB Capital Projects Fund	Nonmajor Governmental Funds	Total Governmental Funds
29,715	-	252,873	-	-	377,732	660,320
15,560,694	277,684,648	-	-	95,772,024	-	389,017,366
2,876,882	2,830,330	-	-	94,127,566	6,356,788	106,191,566
1,694,132	-	-	-	-	-	1,694,132
-	-	-	-	-	26,124,711	26,124,711
-	-	-	-	-	12,814,414	12,814,414
7,677,923	12,009,550	13,252,705	9,165,587	8,265,348	7,342,576	57,713,689
34	6,074	-	-	-	4,756,074	4,762,182
27,839,380	292,530,602	13,505,578	9,165,587	198,164,938	57,772,295	598,978,380
Expenditures						
Current Administrative						
5,538,279	2,401,177	276,761	26,718	768,194	1,601,481	10,612,610
46,525	-	-	-	-	-	46,525
1,640,558	-	-	-	-	137,243	1,777,801
1,159,646	1,751,385	-	-	-	490,616	3,401,647
1,493,116	11,105	5,716	3,279	3,192	496,463	2,012,871
Transportation improvements						
-	-	8,732,792	3,250,265	156,053,127	-	168,036,184
-	113,625,398	274,077	-	16,199,454	1,282,259	131,381,188
-	92,212,625	76,869	-	21,141,932	461,544	113,892,970
-	556,592	-	-	-	-	556,592
-	-	-	-	-	30,531,379	30,531,379
Congestion management						
Debt service						
728,925	-	-	-	-	3,240,000	3,968,925
401,300	-	-	-	-	5,808,000	6,209,300
11,008,349	210,558,282	9,366,215	3,280,262	194,165,899	44,048,985	472,427,992
16,831,031	81,972,320	4,139,363	5,885,325	3,999,039	13,723,310	126,550,388
Other Financing Sources/(Uses)						
-	-	237,712	-	1,371,748	9,543,423	11,152,883
-	(10,283,598)	(631,573)	-	-	(237,712)	(11,152,883)
-	(10,283,598)	(393,861)	-	1,371,748	9,305,711	-
16,831,031	71,688,722	3,745,502	5,885,325	5,370,787	23,029,021	126,550,388
138,679,461	280,066,275	186,546,915	147,867,083	139,414,896	161,927,368	1,054,501,998
\$155,510,492	\$351,754,997	\$190,292,417	\$153,752,408	\$144,785,683	\$184,956,389	\$1,181,052,386



ALAMEDA

County Transportation
Commission

1111 Broadway, Suite 800
Oakland, CA 94607
contact@alamedactc.org

