



EXECUTIVE DIRECTOR'S REPORT



Delivering on Our Promises

Alameda CTC Commissioners and partners celebrate the OAAP kickoff event.

Alameda CTC continues to advance a multimodal and sustainable approach to enhance mobility, safety, and access throughout Alameda County. This month, we highlight exciting progress across the agency's work, from kicking off construction for the Oakland Alameda Access Project, to expanding on-demand accessible rides through the Access for All program, to the San Pablo Avenue Parallel Bike Project.

Alameda CTC remains committed to responsible stewardship of public funds through ongoing oversight and financial updates, including this month's focus on the proposed FY2026-27 budget. Thank you for your partnership as we work together to make Alameda county safer, better connected, and more accessible for all.

Sincerely,
Tony Tavares, Executive Director

Construction Begins on Oakland Alameda Access Project

Construction is now underway on the Oakland Alameda Access Project, a \$175 million investment to improve safety, mobility and connectivity between Oakland and Alameda. Delivered by Alameda CTC, Caltrans, the cities of Oakland and Alameda and regional stakeholders, the project advances long-standing goals to support safer, more reliable travel for all users, enhance regional connectivity, and reduce congestion and air pollution.

Project leaders held a kickoff event on April 13, bringing together agency representatives and community partners to mark the official start of construction. The milestone reflects years of planning, coordination and community engagement.

Key project features include a new "horseshoe" connection providing a direct route from the Posey Tube to northbound I-880 and 5th Street. This improvement will reduce cut-through traffic in Chinatown and nearby neighborhoods while simplifying freeway access. Additional upgrades will reconfigure ramps to improve safety and traffic flow.

The project also delivers significant benefits for active travel users, including a new dedicated bicycle and pedestrian walkway in the Webster Tube, along with upgraded bike lanes and sidewalks on city streets. These improvements will enhance safety near schools, businesses and residential areas while supporting more sustainable travel options.

Funded through a combination of local, state and federal sources—including Measure B and BB, SB 1 and the State Transportation Improvement Program—the project represents a major step forward in improving regional mobility and quality of life.

State Funding Expands On-Demand Accessible Rides

Alameda CTC has a history of directing local funding to increase transportation access to residents with disabilities, especially those who rely on wheelchairs that need dedicated space and specialized equipment for travel. One way is to provide funding for organizations that have Wheelchair Accessible Vehicles (WAVs), which are vehicles equipped with wheelchair ramps and equipment inside the vehicle to secure wheelchairs. There is a critical shortage in on-demand WAV services in the County, because most WAV trips are provided by regular bus transit or must be scheduled through paratransit services.

To broaden access, the State of California has developed a funding program exclusively for this service, called the Access

for All (AFA) program. The AFA program distributes funding to expand access to same-day, on-demand rides in WAVs. Funded by the California Public Utilities Commission (CPUC), the program is supported by a fee on every California transportation network company (TNC) ride, such as Lyft and Uber. CPUC collects and directs revenues from these fees back to counties where the TNC rides occurred to increase accessible service with WAVs.

Last month, the state announced \$2.4 million for three Alameda County-based providers —the City of Fremont, Onward Health, and the Center for Independent Living (CIL). Two of these are long-time recipients of Alameda CTC's own accessible transportation funding, building on Measure BB funding to expand

their community-based offerings to meet this important gap. Alameda CTC provided initial funding for City of Fremont's WAV service and regularly funds CIL.

Going forward, these recipients will be eligible for annual funding for WAV operations directly through Alameda CTC. As of 2025, Alameda CTC can administer the AFA program as a Local Access Fund Administrator. In addition to funding through Measure BB, Alameda CTC will receive funding from the CPUC on an annual basis to support on-going WAV services in the County, including to those receiving awards from the state this year.

More information is available on the CPUC [website](#).

(<https://www.cpuc.ca.gov/news-and-updates/all-news/how-california-is-expanding-on-demand-accessible-rides>)

LOCAL FUNDING HIGHLIGHT: Community Connections Program Supports Mobility for Older Adults and People with Disabilities

From July to December of 2025, with funding support from the Commission, the Center for Independent Living (CIL) conducted six community workshops, delivered over 650 mobility management services, and provided 70 training sessions. In May 2024, Alameda CTC awarded \$1.25 million in Measure B funds to the CIL to implement the Community Connections program. This program provides travel training, mobility management, and transit access for older adults and people with disabilities. Additionally, CIL partners with public transit partners to provide services to better meet the full range of transit needs for customers with diverse disabilities, particularly those who are low-income or face additional barriers to transportation.



San Pablo Parallel Bike Project Advances Towards Design Completion and Construction

Alameda CTC has partnered with the cities of Oakland, Berkeley, and Albany on the development of the San Pablo Parallel Bike Project, which will reach design completion in May 2026. Once finished, the project will close gaps and improve safety along the bicycle routes parallel to and connecting with San Pablo Avenue. Following design completion, the project will be advertised for construction with a goal of awarding a construction contract at the end of 2026. The project is funded with \$13 million in federal grant funding for construction matched with local Measure BB funds.



The project will add and improve neighborhood bike routes and make streets safer and calmer. It will create continuous bike friendly routes on both sides of San Pablo Avenue. The completed project will include:

- Barriers that limit cut-through car traffic on neighborhood streets;
- Small round islands in intersections to slow cars;
- Center islands to make it safer to cross wider streets;
- Flashing lights at crossings to make people walking and biking more visible;
- Signs to help people follow the bike routes;
- Upgraded curb ramps for accessibility;
- New traffic controls to improve safety and manage movement; and
- Extended corners to shorten crossing distances and slow turning cars.

More information about this and other Alameda CTC projects can be found on the agency's [Projects webpage](https://www.alamedactc.org/programs-projects). (<https://www.alamedactc.org/programs-projects>)

Alameda CTC to Launch 2028 Comprehensive Investment Plan

Alameda CTC's Comprehensive Investment Plan (CIP) is a near-term strategic programming document that directs how funds administered by Alameda CTC are programmed, allocated, and documented. Alameda CTC's 2028 CIP is launching this summer, along with a call for projects totaling approximately \$200 million in Alameda CTC discretionary local funding sources and competitive federal transportation funding distributed at the regional level. Funding sources for eligible capital projects and programs include:

- Measures B and BB
- Vehicle Registration Fee (VRF)
- Transportation Fund for Clean Air (TFCA)
- I-580 Toll Revenues
- Federal One Bay Area Grant Program Cycle 4 (OBAG 4)

Alameda CTC anticipates hosting a 2028 CIP Workshop this June to kick off the 2028 CIP process.

Budget Planning Update

Throughout April, the finance team collaborated with all agency departments to identify funding requirements for fiscal year (FY) 2026-27. This process resulted in a balanced and sustainable budget proposal to support Alameda CTC's planning, funding, projects, and programs work in Alameda County. The proposed FY 2026-27 budget will be presented to the Finance and Administration Committee (FAC) and Commission for approval in May.

Agency Activities

In April 2026 the following events were either hosted, sponsored or participated in by Alameda CTC:

- April 1 – East Bay Procurement Summit
- April 11 – Central County Community Connections Plan (4CP) Pop Up Booth, Padres Unidos de Cherryland Easter Event, Hayward
- April 13 – OAAP Kick Off Celebration, Oakland
- April 18 – 4CP Walk Audit & Design Workshop, San Lorenzo Unified School District

Bike Mobile Events

- March 27 – Rosa Parks Environmental Science, Berkeley
- March 29 – Roosevelt Elementary, San Leandro
- March 31 – Joe Michell, Livermore
- April 2 – Washington High, Fremont
- April 3 – Marin Elementary, Albany
- April 14 – American High, Fremont
- April 15 – Tyrrell Elementary, Hayward
- April 22 – Cabrillo Elementary, Fremont

Committee Activities

The Alameda County Technical Advisory Committee (ACTAC) received reports on April 9th on the 2028 Comprehensive Investment Plan and One Bay Area Grant/CARE Program programming guidelines and call for project schedule. It also received an update on the 2026 Countywide Transportation Plan.

Contracting Opportunities

Alameda CTC anticipates upcoming solicitations for the following professional services and construction contracts:

Professional Services

- I-680 Northbound Express Lane Gap Closure PS&E (Open April '26)
- I-580/I-680 Interchange Project PA/ED (Open June '26)
- On-Call Planning and Engineering Services (Open July '26)

Construction

- San Pablo Avenue Parallel Bike Improvements (Open July '26)
- East Bay Greenway Multimodal – North Segment (San Leandro – Broadmoor Boulevard to E14th Street) (Open August '26)
- East Bay Greenway Multimodal – North Segment (Lake Merritt to Fruitvale BART Segment)



STAY CONNECTED WITH ALAMEDA CTC

Sign up for our e-newsletter to receive project updates, engagement opportunities, and the latest from Alameda CTC.



Subscribe today!
Scan the QR code or visit us at bit.ly/AlamedaCTCSubscribe

Visit [Alameda CTC's Meetings webpage](https://www.alamedactc.org/all-meetings) for details on upcoming meetings. (<https://www.alamedactc.org/all-meetings>)



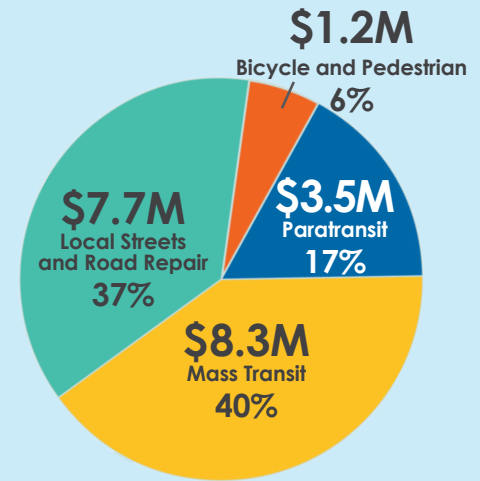
To request free language assistance, call 510-208-7400, visit www.alamedactc.org/Title-VI or email TitleVI@alamedactc.org

Investing in Our Communities

Alameda CTC supports the future of Alameda County by equitably investing in projects and programs throughout the county to improve transportation.

Measure BB Program Distributions (Dec '25)

Measure BB direct local distributions since April 2015. More than \$1.10 billion has been distributed. Over \$20 million was distributed in December 2025.



Vehicle Registration Fee (Dec '25)

Over \$1 million in vehicle registration fees was collected in December 2025. Since 2011, Alameda CTC has distributed more than \$98.6 million of these fees for local road improvement and repair.

