



PLAN • FUND • DELIVER

Building Our Future

Investing in Mobility

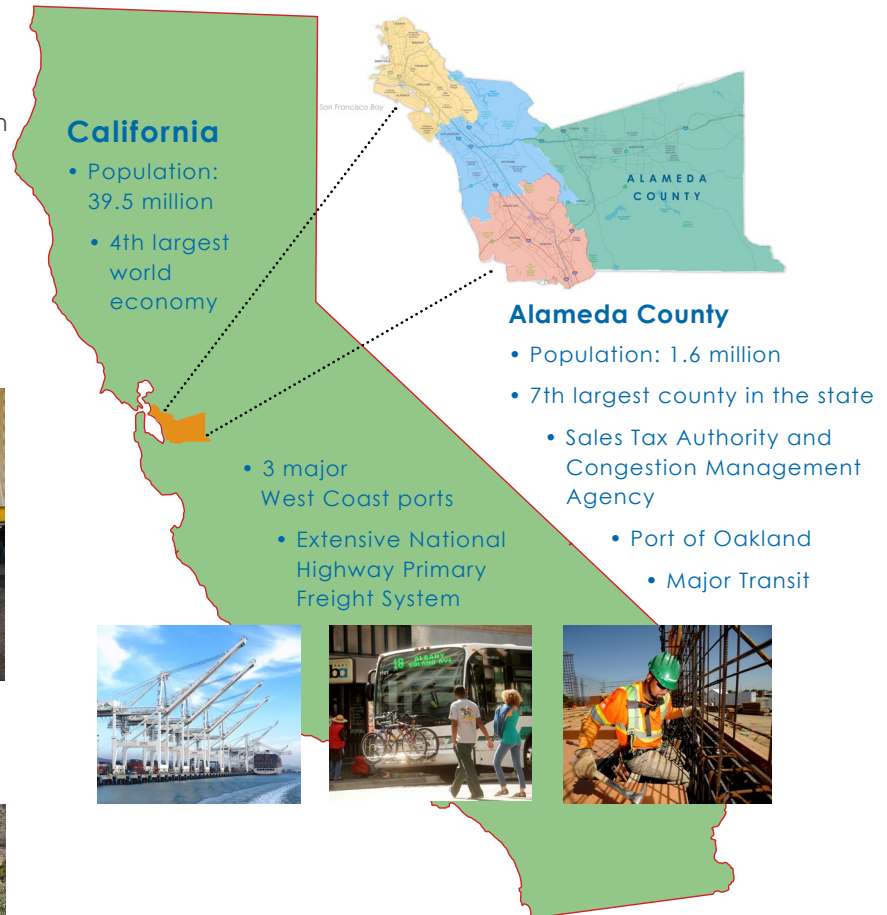
Alameda County is at the center of the Bay Area's interconnected economy and is a major transportation hub with the Port of Oakland, interstate freeways, major public transit facilities and services, and bicycle and pedestrian routes and trails. Alameda CTC meets the county's growing needs by advancing projects, programs, and policies that improve safety, modernize infrastructure, drive innovation, and strengthen the region's economic competitiveness.



Alameda CTC was a lead investor in the world's first high-capacity hydrogen fueling station for commercial heavy-duty trucks—an industry-first innovation that opened at the Port of Oakland in 2024.



Alameda CTC's investments in the Doyle Street Project in Emeryville brought a high quality bike facility to the community that increases users' safety.



Building our economic future and creating jobs

Alameda County has a diverse economic base and is home to universities, labs and major businesses. Alameda CTC uses its local and small local business contracting program to support local jobs funded by the local sales tax dollars. In the most recent fiscal year, the agency delivered \$405 million in transportation improvements that create jobs, enhance mobility and enrich communities.

Improving transportation safety for everyone

Alameda CTC advances strategies, projects and programs to help residents, businesses and commuters move easily, reliably, safely and affordably around Alameda County. Our policies, projects, and programs enhance safety and access, including programs to meet the specific needs of students and older adults. The Countywide Rail Safety Enhancement Program improves safety for all users at railroad at-grade crossings and areas between crossings in local communities that are often low income communities or communities of color.

Modernizing our transportation system through innovation

Alameda CTC is a responsible steward of voter-approved funds, delivering modern transportation solutions that improve safety, enhance connectivity, and drive economic growth. Investments in smart traffic systems, rail upgrades, and diverse transportation choices streamline travel and strengthen Alameda County's role in regional and national goods movement.

Alameda County At A Glance

DEMOGRAPHICS

Population: 1.64 million

Population Percentage of 9-County Bay Area: 22%
2nd largest county in the Bay Area

Ranked 5th among California's 58 counties for percentage of residents holding a bachelor's degree or higher.

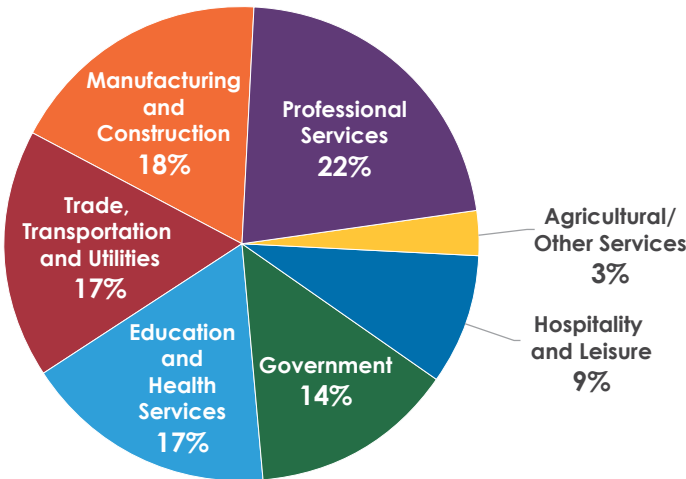
Average commute: 31 minutes

UNIVERSITIES, LABS AND CUTTING-EDGE TECHNOLOGY

Colleges and universities, such as the University of California, Berkeley and California State East Bay, provide strong ties to innovation sectors including for biomed and advanced manufacturing.

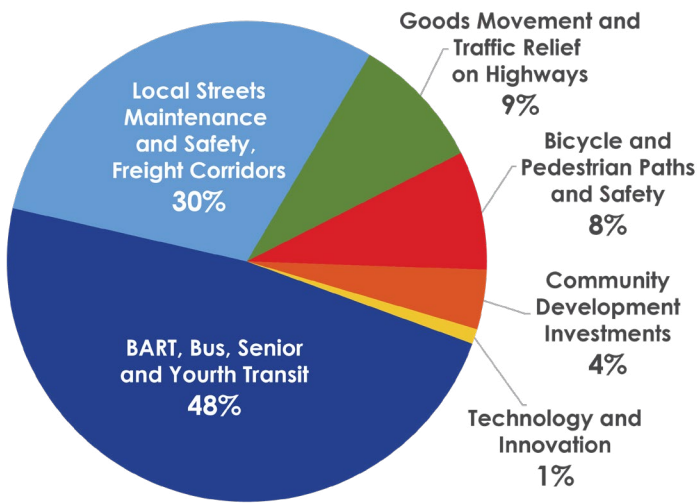
Three national laboratories—Lawrence Berkeley National Lab, Lawrence Livermore National Lab and Sandia National Lab—driving innovation and startup activity in Alameda County.

A DIVERSE EMPLOYMENT SECTOR (2023)



Source: State of California Employment Development Department

2014 TRANSPORTATION EXPENDITURE PLAN



Local funding supports comprehensive transportation system

Three local sales tax measures have been approved by voters in Alameda County. Local transportation sales taxes are reliable funding sources that leverage regional, state and federal funding.

These local funds have a global reach by expanding goods movement and multimodal systems while supporting California's economy, the fourth largest in the world. These multimodal funds support our diverse economy and communities.



Alameda County's State and National Significance

Port of Oakland

Alameda County serves as a gateway to the world for goods movement to and from the county, San Francisco Bay Area, Northern California and the Western U.S.

- The Port of Oakland is the third busiest container port in California and the ninth busiest in the United States, handling over two million containers annually.
- Oakland International Airport and two major Class I railroads support international and domestic trade.
- The Bay Area's trucking distribution system is highly concentrated in Alameda County, which has an extensive network of interstate freeways, including many on the National Highway Primary Freight Network, including: I-80, I-238, I-580, I-680 and I-880.
- The Port of Oakland is one of the nation's designated Strategic Ports, making it a critical link in the logistics transfer to our military forces overseas. The military provides both national defense and response to domestic natural disasters; both types of missions rely heavily on national surface transportation infrastructure to fulfill those support requirements, including the Port of Oakland.



99% of containerized cargo from Northern California passes through the Port of Oakland

Roads and interstates

A significant part of the regional and local transportation system, roadways move people and goods within the county and beyond. These roadways also support multiple transportation modes for people within the Bay Area.

- Sixty percent of the Bay Area's 10 interstate highways pass through Alameda County, supporting the national interstate system.
- Alameda County invests in the National Highway Primary Freight Network on I-80, I-238, I-580, I-680 and I-880.
- Alameda CTC deploys intelligent transportation systems, express lanes, metered lanes and other technology to provide traffic relief.
- Alameda County's 3,600 miles of roads provide access to housing, jobs, education and transit, including many state highways that transect local cities where major development is planned.



60% of the Bay Area's 10 interstate highways pass through Alameda County

Transit

Transit plays a critical role in Alameda County by providing vital accessibility to individuals and businesses in the county.

- Transit service in Alameda County includes rail, bus, ferry and shuttle service provided by public and private operators.
- AC Transit is leading the transition of fleets to zero emissions, including electric and hydrogen fuels.
- Of BART's 50 stations, 22 are in Alameda County.



16% of AC Transit's active fleet will be zero emissions buses by the end of 2025

Alameda CTC Projects Improve Safety and Transportation Efficiency, Expand Access, Strengthen Community, and Advance Regional Connectivity

Multimodal Corridor Investments

SAN PABLO AVENUE CORRIDOR PROJECT

Multimodal improvements to effectively accommodate growth and support economic development. Efforts also improve the comfort and quality of trips, enhance safety, and promote transportation design solutions for everyone.



GoPort Program

The Port of Oakland improvements to truck and rail access, roadway operations and technology advancements will increase efficiency and international import/export capacity for this designated U.S. Strategic Port.



FREIGHT INTELLIGENT TRANSPORTATION SYSTEM (FITS)

Completed in 2023, FITS was the first GoPort project to be implemented and features advanced technology that enhances efficiency, safety, and goods movement reliability by delivering real-time regional travel information to truck and rail users. Additional benefits include reduced congestion on local streets, less vehicle idling, and quicker truck turn-around times.

7TH STREET GRADE SEPARATION EAST

This GoPort project is realigning and rebuilding an outdated rail underpass at a key Port entry to meet modern standards, lower wait times, reduce vehicle and rail conflicts and ease congestion at nearby intersections. These improvements will enhance the efficiency and reliability of rail operations, benefiting cargo movement through the Port and reduce emissions in neighboring communities. The project also includes a barrier-separated pedestrian and bicycle path to safely access the waterfront and recreational areas.

LEGEND

- Project Areas
- Project Areas continued beyond Alameda County
- RSEP, Phase 1 Projects

Modernizing Interchanges and Connecting Communities

INTERSTATE 80/ASHBY AVENUE

At this critical access point that intersects regional transportation routes, the project:

- Improves accessibility, safety, traffic flow, and bicycle and pedestrian facilities
- Provides traffic congestion relief
- Enhances mobility



OAKLAND ALAMEDA ACCESS PROJECT

At Webster and Posey Tubes, the project:

- Increases safety for all and reduces emissions
- Improves connectivity and operations between the cities of Oakland and Alameda
- Improves critical highway interchange to enhance regional mobility



INTERSTATE 880 AT WHIPPLE ROAD AND INDUSTRIAL PARKWAY

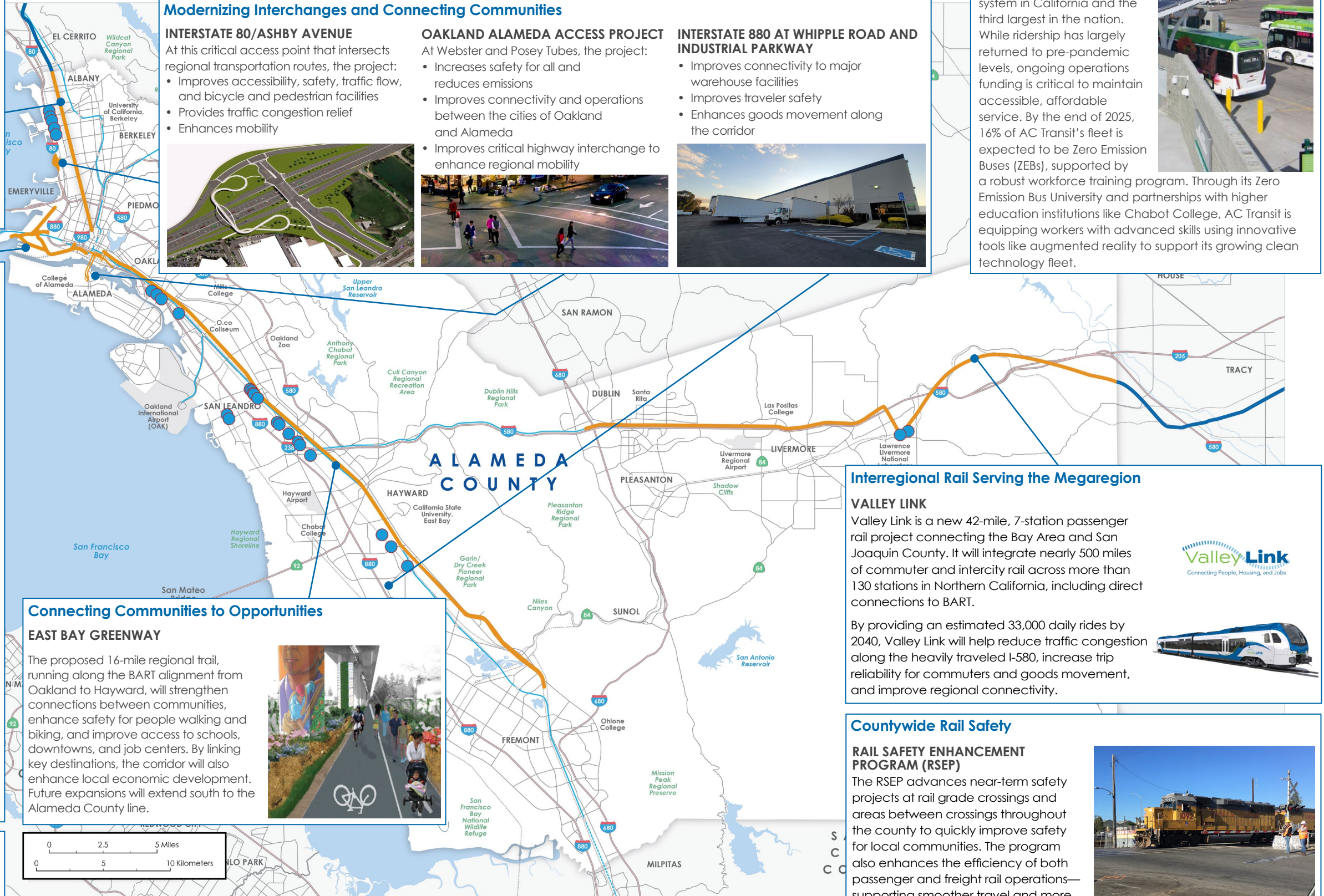
- Improves connectivity to major warehouse facilities
- Improves traveler safety
- Enhances goods movement along the corridor



Alameda County Transit

AC TRANSIT

AC Transit is the largest bus-only public transit system in California and the third largest in the nation. While ridership has largely returned to pre-pandemic levels, ongoing operations funding is critical to maintain accessible, affordable service. By the end of 2025, 16% of AC Transit's fleet is expected to be Zero Emission Buses (ZEBs), supported by a robust workforce training program. Through its Zero Emission Bus University and partnerships with higher education institutions like Chabot College, AC Transit is equipping workers with advanced skills using innovative tools like augmented reality to support its growing clean technology fleet.



Connecting Communities to Opportunities

EAST BAY GREENWAY

The proposed 16-mile regional trail, running along the BART alignment from Oakland to Hayward, will strengthen connections between communities, enhance safety for people walking and biking, and improve access to schools, downtowns, and job centers. By linking key destinations, the corridor will also enhance local economic development. Future expansions will extend south to the Alameda County line.



Interregional Rail Serving the Megaregion

VALLEY LINK

Valley Link is a new 42-mile, 7-station passenger rail project connecting the Bay Area and San Joaquin County. It will integrate nearly 500 miles of commuter and intercity rail across more than 130 stations in Northern California, including direct connections to BART.

By providing an estimated 33,000 daily rides by 2040, Valley Link will help reduce traffic congestion along the heavily traveled I-580, increase trip reliability for commuters and goods movement, and improve regional connectivity.



Countywide Rail Safety

RAIL SAFETY ENHANCEMENT PROGRAM (RSEP)

The RSEP advances near-term safety projects at rail grade crossings and areas between crossings throughout the county to quickly improve safety for local communities. The program also enhances the efficiency of both passenger and freight rail operations—supporting smoother travel and more reliable goods movement across the region.



Innovation, Economic Development, Safety

Located at the heart of the Bay Area, Alameda County is heavily impacted by the convergence of regional and transbay trips on its highway and transit networks. Many of these corridors serve the region's transbay bridges that provide Northern California megaregion connectivity and access to support a strong economy.

LEVERAGING TECHNOLOGY

Alameda CTC advances transportation through technology investments that boost efficiency, reliability, and performance. At the Port of Oakland, Alameda CTC helped fund the world's first high-capacity hydrogen fueling station for heavy-duty trucks, showcasing a new potential for freight vehicles. The agency also deploys express lane technology on I-580 and I-680, using real-time traffic management to ease congestion and improve travel. Through the GoPort program, Alameda CTC launched the Freight Intelligent Transportation System (FITS) to enhance truck and rail access, streamline operations, and reduce delays—supporting a modern, responsive freight network.

AN ECONOMIC DRIVER

With assets like the Port of Oakland and key interstate corridors, the county is a critical hub for freight and commerce. Alameda CTC plays a vital role in supporting the regional and national economy by investing in upgrades to rail crossings, highway interchanges, and truck routes that reduce delays and improve freight flow.

Along with the Commission's local contracting programs and infrastructure projects, our work generates jobs, attracts investment, and ensures the efficient movement of people and goods across the Bay Area and beyond.

PROGRAMS

The Student Transit

Pass Program expands transportation options by providing transit passes to middle and high school students, making it easier for the Alameda County's middle and high school students to travel to and from school and school-related programs, jobs and other after-school activities.



The program, funded by Measure BB, Alameda County's 2014 Transportation Expenditure Plan, now serves 63,000 students at more than 160 schools in 18 districts throughout Alameda County.



Safe Routes to Schools is a nationwide program that promotes and encourages safe walking, bicycling, carpooling and transit use to travel to and from school.

Alameda County launched its program at two schools in the City of Oakland and has grown to almost 300 schools countywide.

Alameda County's Paratransit Program

provides funding to city-based paratransit programs and transit agencies for Americans with Disabilities Act-mandated paratransit operations. This important program assists older adults and people with disabilities navigate throughout the County using available transportation and improving users' mobility, furthering independence, health, and social connections.



Alameda County's Paratransit Program is a critical component to this region's social fabric and public safety net.



Safe Routes to Schools

The program reaches nearly 300 schools in Alameda County.



Student Transit Pass Program

Free transit passes help students get to and from school, reducing costs for working families.



Paratransit

Paratransit services mean more independence for users.

Building Our Future

PLAN

Alameda CTC develops a range of plans that guide transportation development and funding decisions. Key plans include:

- Active Transportation Plan
- Community Based Transportation Plan
- Congestion Management Program
- Countywide Transit Plan
- Goods Movement Plan
- Multimodal Arterial Corridor Plan
- Countywide Transportation Plan
- Priority Development Area Investment and Growth Strategy
- Transportation Expenditure Plans

FUND

From local, state and federal fund sources, **Alameda CTC distributes funds for numerous transportation project and program investments.** Types of projects and programs include:

- Advancing transportation safety
- Highway modernization
- Innovative transportation technology
- Arterial improvements
- Priority Development Areas to increase housing and economic opportunities
- Bus and rail services
- Services for seniors and people with disabilities (Paratransit)

DELIVER

Alameda CTC funds and oversees numerous transportation capital projects in Alameda County that improve multimodal corridors, ensure safe travel, transform routes for reliable goods movement, maintain and enhance local streets and roads, and modernize public transit. Key projects include:

- Arterial improvements throughout the county
- Routes, pathways and facilities enhancements for all users
- Goods movement investments
- High-occupancy vehicle lanes and other modernization improvements on highway corridors
- Transit expansion projects



GOODS MOVEMENT improvements in Alameda County expand jobs and enhance local communities, supporting the Bay Area economy – and beyond.



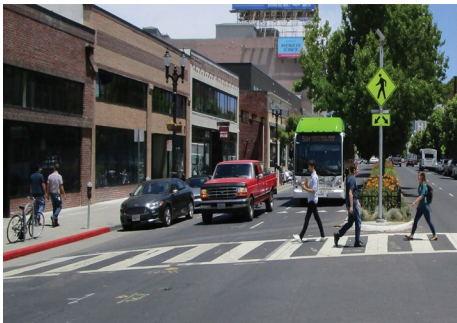
INTERREGIONAL RAIL SERVICES support freight and passenger services in Alameda County and Northern California.



MULTIMODAL INTERCHANGE MODERNIZATIONS provide critical connections throughout the county, improving safety, navigation and traffic flow, and improving safety for all users.



EXPRESS LANES along I-580 and I-680 increase highway efficiency for commuters, transit and freight, using existing capacity to reduce congestion and improve travel reliability.



IMPROVING ARTERIAL CORRIDORS support safety for all travelers, reduce travel conflicts and accommodate future growth.



CORRIDOR IMPROVEMENTS such as the East Bay Greenway improve access to jobs, education, transit and other important destinations.

Delivering Our Promises

Improving Our Transportation • Serving Our Communities

The Alameda County Transportation Commission (Alameda CTC) supports transportation investments for the 1.6 million people in 14 cities, the county and transit operators in the heart of the San Francisco Bay Area by managing the county's voter-approved transportation expenditure plans for Measure BB and the Vehicle Registration Fee (VRF) and makes programming recommendations on regional, state and federal funds apportioned to Alameda County. Alameda CTC also serves as the county's congestion management agency.

ALAMEDA CTC MISSION

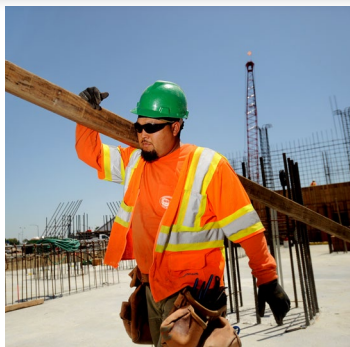
The mission of Alameda CTC is to plan, fund and deliver transportation programs and projects that expand access and improve mobility to foster a vibrant and livable Alameda County.

Alameda County is the 7th largest county in California by population



LOCAL SUPPORT LEVERAGED FOR HIGH-IMPACT PROJECTS

Alameda CTC's voter-approved transportation sales tax Measure BB—passed by 71% of the voters in 2014—provides a dependable source of local funding that reflects strong public support for infrastructure investment. By leveraging local dollars, Alameda CTC delivers high-impact projects that improve mobility, enhance safety, and strengthen the economy.



Commissioners:

Commission Chair

Supervisor David Haubert, District 1

Commission Vice Chair

City of Alameda

Mayor Marilyn Ezzy Ashcraft

Alameda County Supervisors

Supervisor Elisa Márquez, District 2

Supervisor Lena Tam, District 3

Supervisor Nate Miley, District 4

Supervisor Nikki Fortunato Bas, District 5

AC TRANSIT

Director - District At-Large Joel B. Young

BART

Director Melissa Hernandez

City of Albany

Councilmember Preston Jordan

City of Berkeley

Councilmember Terry Taplin

City of Dublin

Mayor Sherry Hu

City of Emeryville

Councilmember Matthew Solomon

City of Fremont

Mayor Raj Salwan

City of Hayward

Mayor Mark Salinas

City of Livermore

Mayor John Marchand

City of Newark

Mayor Michael K. Hannon

City of Oakland

Councilmember At-Large

Rowena Brown

Councilmember Carroll Fife

City of Piedmont

Vice Mayor Conna McCarthy

City of Pleasanton

Mayor Jack Balch

City of San Leandro

Mayor Juan González, III

City of Union City

Mayor Gary Singh

Contacts:

Executive Director

Tony Tavares

ttavares@alamedactc.org

Deputy Executive Director of Planning and Policy

Carolyn Clevenger

cclevenger@alamedactc.org

Alameda County Transportation Commission

1111 Broadway, Suite 800

Oakland, CA 94607

P • 510.208.7400

W • www.AlamedaCTC.org

