



Head to page 2 to read more about what Alameda CTC is doing to improve safety for cyclists across the county through Measure BB investments!



ALAMEDA COUNTY TRANSPORTATION COMMISSION

# EXECUTIVE DIRECTOR'S REPORT

DECEMBER 2025

## Delivering on Our Promises

Alameda CTC has long been dedicated to improving transportation throughout Alameda County—planning, funding, and delivering projects that enhance mobility, safety, and access. The passage of Measure BB in 2014, the third voter-approved transportation sales tax measure, reaffirmed the public's strong and lasting commitment to investing in a better transportation future.

Alameda CTC's work is rooted in long-term planning, strategic investment, and on-the-ground delivery. With a strong focus on transparency, partnership, and public service, the agency continues to improve mobility, enhance safety, and support communities throughout the county.

Thank you for your continued partnership as we build a more connected, safe, and accessible Alameda County.

Sincerely,

Tony Tavares  
Executive Director

## TABLE OF CONTENTS

- 1 Project Updates
- 2 Planning and Programs Updates
- Policy News
- Programming Updates
- 3 Finance Updates
- Committee Activities
- 4 Other News

## Project Updates

### Leaders Celebrate \$240 Million Investment at SR-84/I-680 Ribbon Cutting

State, regional, and local leaders joined Alameda County Transportation Commission (Alameda CTC) last month in Sunol to celebrate the completion of the \$240 million SR-84/I-680 Interchange Improvement Project, a major capital investment with substantial funding from Alameda CTC's Measure BB. The ribbon cutting highlighted years of coordinated work—led in partnership with Caltrans—to relieve congestion and enhance safety along a vital route connecting the Tri-Valley and South Bay.

The project upgraded SR-84 to expressway standards, reconstructed ramps, added a flyover from Calaveras Road to northbound I-680, and extended the southbound I-680 HOV/Express Lane by roughly two miles. New frontage roads improve local access, and new bikeways expand multimodal options for the surrounding communities.

The project was funded through Measure BB, Regional Measure 3 bridge tolls, the State Transportation Improvement Program, SB 1 Local Partnership Program funds, and local contributions, and was delivered through a strong partnership among Caltrans, Alameda CTC, the Federal Highway Administration, and local jurisdictions.

Learn more about the project by visiting <https://www.alamedactc.org/programs-projects/highway-improvement/sr-84-i-680-interchange-improvements>.

### Rail Safety Improvements Advance in Oakland and Union City

Alameda CTC is advancing safety enhancements at two at-grade rail crossing locations – High Street in Oakland and H Street in Union City. This work, part of the Alameda County Rail Safety Enhancement Program, is carried out in partnership with the California Public Utilities Commission (CPUC), California Department of Transportation (Caltrans),

*Project Updates cont'd on page 2*



Alameda CTC Commissioners attend the SR-84-680 Ribbon Cutting.

**Project Updates cont'd from page 1**

and the partner cities. The goal of this project is to improve safety for all users, including bicycles and pedestrians, by constructing:

- ADA compliant sidewalks;
- Automatic pedestrian gates and fencing;
- Concrete pedestrian crossing panels;
- Upgraded warning devices, including rail signals and crossing gates; and
- Improved queue cutter devices, lighting, warning strips, and signing.

Alameda CTC is using federal Section 130 funds to design these improvements.

In September, a diagnostic team consisting of representatives from Federal Railroad Administration (FRA), Caltrans, CPUC, Alameda CTC, Union Pacific Railroad (UPRR), and the partner cities, conducted on-site evaluations at both crossings to assess conditions and identify safety needs.

These partner agencies will continue to contribute expertise to advance safety, engineering, and environmental review. FRA and Caltrans will provide guidance on rail safety regulations, project grants, and review in accordance with the National Environmental Policy Act (NEPA). CPUC will review and approve project construction to ensure safety and regulatory adherence. Alameda CTC will collaborate with local cities and other stakeholders to lead project development and implement safety improvements related to local jurisdictions. UPRR will collaborate with all stakeholders to coordinate complementary safety improvements.

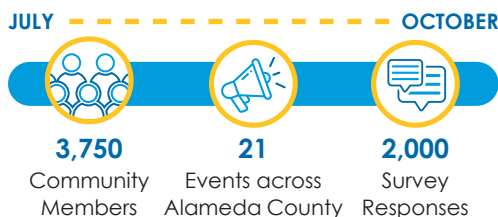
Based on input from the September diagnostic meetings, the project team is developing preliminary engineering plans and identifying areas of potential environmental impact. The draft environmental document is expected in late 2026.

More information about this and other Alameda CTC projects can be found on the agency's [Projects webpage](#).

## Planning and Programs Updates

### Community Voices Help Shape the Countywide Transportation Plan

Alameda CTC staff recently completed an extensive round of community engagement to inform the development of the Countywide Transportation Plan (CTP), including a public survey, tabling at community events across the county, and partnerships with community organizations. From July through October 2025, the team connected with more than 3,750 community members at 21 events across Alameda County and collected over 2,000 survey responses. Additionally, nearly 100 people shared their transportation experiences and priorities through an open-ended survey distributed in various forms including electronically and paper.



Alameda CTC staff developed the engagement strategy in collaboration with the CTP Working Group, a partnership of community-based organizations in Alameda County that helped refine survey language, identify key outreach opportunities, and co-host events that extended the Commission's engagement with local communities. Highlights included partnerships with San Leandro 2050 at a local food pantry, Roots Community Health Center at the Oakland Community Resource Fair, and CityServe of the Tri-Valley at their Soup-er Tuesday event.

Concurrently, a targeted survey for older adults and people with disabilities was also deployed through the agency's paratransit advisory committees, pop-up events at senior centers, as well as participation in larger events like the Annual Healthy Living Festival. This effort complemented CTP engagement and generated nearly 500 responses.

The Commission will receive updates on engagement and how community input will inform CTP recommendations throughout the first half of 2026.

## Policy News

### Alameda CTC Prepares 2026 Legislative Program

Each year, Alameda CTC adopts a legislative program that serves as a roadmap for advocacy and partnerships to advance the Commission's transportation priorities and secure sustainable funding that aligns with regional, state, and federal initiatives. Building on the 2025 platform and CTP Policy Blueprint finalized last year, the proposed 2026 program emphasizes safety, economic vitality, healthy communities, and equity.

The proposed Legislative Program for next year emphasizes six core priorities: Transportation Funding, Safety, Economic Vitality, Healthy Communities, Equity, and Effective Project Delivery—principles that guide the agency's efforts to further a transportation network for Alameda County that is safe, reliable, and inclusive.

At the state level, the agency will focus on transportation safety, climate, air quality, and equitable mobility. At the federal level, Congress is preparing the next surface transportation reauthorization to succeed the Infrastructure Investment and Jobs Act, which expires in 2026. Alameda CTC will collaborate with partners to ensure local and regional priorities are well positioned for future federal funding opportunities.

## Programming Updates

### Alameda CTC Funding Expands LAVTA Mobility Options in the Tri-Valley

In 2024, Alameda CTC awarded \$600,000 in Measure B funds to Livermore Amador Valley Transit Authority (LAVTA) to implement *Wheels Access – Expanding Mobility options in the Tri-Valley*, a comprehensive mobility program designed to improve transportation for older adults and people with disabilities in Dublin, Livermore, Pleasanton and unincorporated areas of Alameda County.

The program focuses on establishing a new Mobility Management program, continuing the popular Para-Taxi Reimbursement/Debit Card program, and providing operating support to the multi-jurisdictional One Seat Ride program. In the first half of 2025, LAVTA provided approximately 4,000 one-way trips via these programs, expanding mobility for Tri-Valley residents.



**Programming Updates cont'd from page 2**

New raised bike lanes will improve connectivity for cyclists travelling along Fruitvale Avenue in Oakland. Photo courtesy of City of Oakland Department of Transportation.

## Measure BB-funded Fruitvale Alive! Gap Closure Project Nears Completion in Oakland

In 2019, Alameda CTC awarded \$1.63 million in Measure BB funds to the City of Oakland for the Fruitvale Alive! Gap Closure Project. The project will enhance safety and connectivity for people walking and biking along Fruitvale Avenue between Alameda Avenue and East 12th Street.

Project features include installation of a raised bicycle track, wider sidewalks, improved pedestrian crossings, pedestrian scale lighting, and landscaped buffers. It also removes vehicle through lanes and slip turns to increase safety. The majority of construction is nearing substantial completion, with finalization expected by September 2026. Landscaping is complete and remaining activities are limited to work requiring coordination with Union Pacific Railroad.

## Finance Updates

### Finance Team Finalizes FY2024–25 Audit and Reports

Over the past several months, the Finance team worked with independent financial auditors from Maze and Associates to complete the audit processes and prepare the Annual Comprehensive Financial Report (ACFR) for the fiscal year ending June 30, 2025. Auditors provided an unmodified (or clean) opinion of Alameda CTC's financial statements.

On October 23, the Engagement Partner from Maze and Associates met with Alameda CTC's Audit Committee

to review the draft ACFR and discuss required communications in accordance with Generally Accepted Government Auditing Standards. The ACFR is being presented for approval at the Finance and Administration Committee (FAC) and Commission meetings in November and December, respectively.

Finance and Administration staff also presented several key reports to the FAC and Commission during this period, including the Annual Local Business Contract Equity Program Utilization Report for FY2024-25, the FY2025-26 first quarter financial report, and the professional services contracts plan.

### Contracting Opportunities

Alameda CTC anticipates upcoming solicitations for the following professional services and construction contracts:

#### Professional Services

- Alameda Countywide Ramp Intersection Safety Plan (CRISP)
- Program Management Services – Accessible Transportation
- San Pablo Avenue Bus Lanes and Bike Lanes Project
- Express Lane System Manager and Program Support

#### Construction

- San Pablo Avenue Parallel Bike Improvements
- East Bay Greenway Multimodal – North Segment (San Leandro – Broadmoor Boulevard to E14th Street)
- East Bay Greenway Multimodal – North Segment (Lake Merritt to Fruitvale BART Segment)

For more information, visit the [Contracting Opportunities webpage](#).

## Committee Activities

### November 6th - Alameda County Technical Advisory Committee (ACTAC)

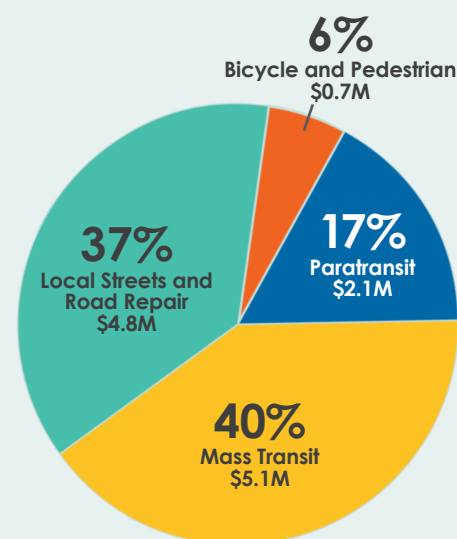
ACTAC received reports on the Local Business Contract Equity Program Contract Utilization for Fiscal Year 2024-25, the Caltrans Disadvantaged Business Enterprise Program Interim Final Rule, and Measure B/BB/Vehicle Registration Fee Direct Local Distribution Programs and grant programs.

## Transportation Investments

Alameda CTC supports the future of Alameda County by equitably investing in projects and programs throughout the county to improve transportation.

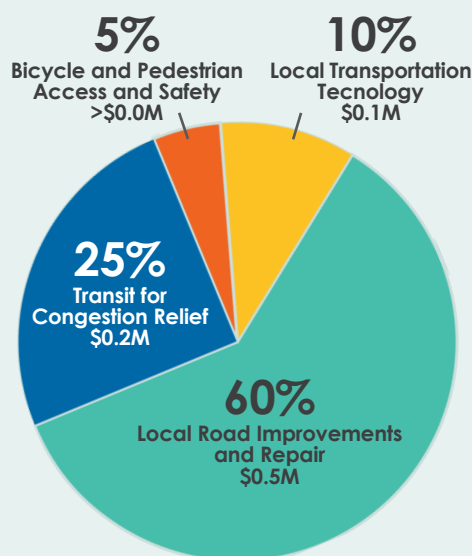
### Measure BB Program Distributions

Measure BB direct local distributions began in April 2015 and total more than \$1.10 billion; over \$16 million was distributed in August 2025.



### Vehicle Registration Fee

Since 2011, Alameda CTC has distributed more than \$98.6 million for local road improvement and repair; \$1 million was collected in August 2025.



*Committee Activities cont'd on page 4*

Agency Activities

In November, Alameda CTC hosted, sponsored or participated in a wide range of events, including:

- Oct 27-29 – MPact Conference in Portland
- Oct 31– Central County Community Connections Plan (4CP) Community Based Organization (CBO) Focus Group #1
- Nov 3 – Active Transportation Plan (ATP) Working Group Meeting #2
- Nov 3 – Emeryville BPAC Mtg for San Pablo Avenue Corridor Projects
- Nov 5-7 – GovAI Coalition Summit in San Jose
- Nov 6 – Oakland BPAC Infrastructure Committee for San Pablo Avenue Corridor Projects
- Nov 12 – ATP Business Organization Focus Group #1
- Nov 13 – 4CP Listening Session with Cherryland Community Assoc.
- Nov 13 – CTP CBO Working Group Meeting #3
- Nov 14 – ATP Business Organization Focus Group #2
- Nov 14 – Ruby Bridges Walk to School Day
- Nov 18 – ATP Stakeholder Meeting
- Nov 20 – Berkeley TIC San Pablo Avenue Corridor Projects

Bike Mobile Outreach Events

- Nov 3 – Melrose Leadership Academy, Oakland
- Nov 4 – Irvington High School, Fremont
- Nov 5 – Tennyson High School, Hayward
- Nov 6 – John Muir Middle School, San Leandro
- Nov 7 – Birch Grove Primary School, Newark
- Nov 8 – Piedmont Avenue Elementary, Oakland
- Nov 10 – Lincoln Elementary, Newark
- Nov 12 – Cottonwood Creek School, Dublin
- Nov 13 – James Dougherty Elementary School, Dublin
- Nov 14 – John Green Elementary School, Dublin
- Nov 17 – Vallejo Mill Elementary School, Fremont
- Nov 18 – Hillcrest Elementary School, Oakland
- Nov 19 – Brookvale Elementary School, Fremont
- Nov 20 – Madison Elementary School, San Leandro
- Dec 2 – Grass Valley Elementary School, Oakland
- Dec 5 – Castro Valley Elementary School, Castro Valley
- Dec 6 – Frick United Academy of Language Middle School, Oakland

Committee Activities cont'd from page 3

November 13th - Independent Watchdog Committee (IWC)

IWC discussed the Valley Link Rail Project, received an update on Alameda CTC's Measure B/BB Capital Program, and reviewed the outreach summary and costs associated with the IWC Annual Report to the Public.

Visit [Alameda CTC's Meetings webpage](#) for details on upcoming meetings.

Other News

Alameda CTC Leads Community-Driven Planning Effort for Central County

Alameda CTC is leading the Central County Community Connections Plan (4CP) in partnership with Caltrans, local jurisdictions, and communities near I-238 and I-580 from I-880 to Castro Valley BART. Funded through a Caltrans Sustainable Transportation Planning Grant, the 4CP is a focused planning effort that will identify and advance near-term investments to support safety, connectivity, and climate resilience in communities heavily impacted by extensive barriers and freeway infrastructure.

The 4CP will be developed across three phases, each with opportunities for public input:

- Round 1 (Fall/Winter 2025): Confirm needs and prioritize streets for project development
- Round 2 (Winter/Spring 2026): Co-create project ideas and workshop design concepts
- Round 3 (Summer/Fall 2026): Finalize initial designs for priority projects and share the draft plan and implementation strategy

The plan will begin with a focused needs assessment to confirm community priorities. Then, the project team will co-develop proposed improvements and workshop project design concepts at several high-priority locations through extensive public engagement. Alameda CTC is also working closely with local jurisdictions and transit agencies through a Technical Advisory Committee. The final 4CP will identify implementation pathways to deliver these community-prioritized projects in the near-term.

The 4CP Team wants to hear from you!

Share your priorities by exploring our interactive webmap and completing the survey! Go to [fp.mysocialpinpoint.com/alamedactc-4cp](https://fp.mysocialpinpoint.com/alamedactc-4cp) to share your thoughts and learn more by going to the project website at [www.alamedactc.org/4CP](https://www.alamedactc.org/4CP). Public comment is open through December 31, 2025.



BikeMobile events teach kids simple skills to keep their bikes rolling smoothly