

# GoPort Project Update

## 7th Street Grade Separation East Project

SUMMER 2025



### What Is GoPort?

Global Opportunities at the Port of Oakland (GoPort) is a series of transportation improvements at the Port of Oakland. One of several GoPort efforts, the 7th Street Grade Separation East (7SGSE) Project will replace the existing substandard railroad underpass on 7th Street between Interstate 880 and Maritime Street. The project will shift the new roadway north and reconnect to the existing 7th Street location at Maritime Street. Work started in the Fall of 2023 and continues to progress.

### Current 7th Street Conditions May Cause Delays

- Portions of road & bridge constructed between 50 and 100 years ago using outdated standards including clearance;
- Lane width is inconsistent and narrow, making conditions unpredictable and causing vehicle delays;
- Path for pedestrian and bicyclists is narrow and unlit;
- There are no lane shoulders for emergencies or breakdowns.



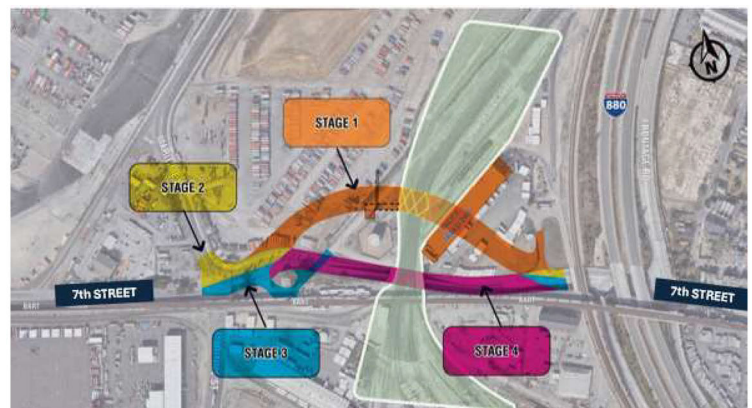
Existing 7th Street underpass with low clearance and lane width

### 7SGSE Design



A new multi-use pathway with a green wall feature and a new wider and safer roadway are being rebuilt to modern construction standards to improve access to the Port of Oakland and Bay Trail.

**Initial construction efforts have focused on installation of new storm drain facilities, relocation of existing utilities, and preparing for new retaining wall construction north of existing 7th Street. ADA-compliant curb ramps at 7th Street and Maritime Street will also be constructed. During this phase, 7th Street will remain open, providing two public travel lanes in each direction. Ghilotti Construction Company, which has a local office in Alameda County, is leading construction efforts.**



Project construction is located on 7th Street between Interstate 880 and Maritime Street.

### Connect to get the information you need!

Alameda County Transportation Commission • 1111 Broadway, Suite 800 • Oakland, CA 94607 • (510) 208-7400 • [www.AlamedaCTC.org](http://www.AlamedaCTC.org)



## Project Benefits

- Improved truck and car access to the Port, relieving congestion;
- Better safety;
- Enhanced reliability of goods movement, improving the Port's global market position and creating more local employment opportunities;
- Higher quality options for active transportation including upgrading the current bike and pedestrian pathway to today's ADA requirements and connecting with the San Francisco Bay Trail and Middle Harbor Shoreline Park; and
- A landscaped bicycle and pedestrian pathway that incorporates a community desired green feature.



Deep Soil Mixing wall installation on east side of project.

## 7SGSE Construction Status

### Completed Activities

- Kinder Morgan fuel line relocation;
- BART foundation protection;
- 1st phase water relocation; and
- PCC Logistics building demolition.

### Spring/Summer 2025

- Continue retaining wall construction;
- Started major excavation work along new 7th Street alignment;
- Started laying storm drain along new alignment; and
- Installing tieback walls as excavation proceeds.



Ghilotti crews excavating the new alignment of 7th Street.

### Late 2025/Early 2026

- Continue Deep Soil Mix (DSM) retaining wall construction, and
- Start major Union Pacific Railroad (UPRR) track relocation work.



Tieback walls being installed alongside excavation.

## Summer 2028 - Estimated Construction Completion

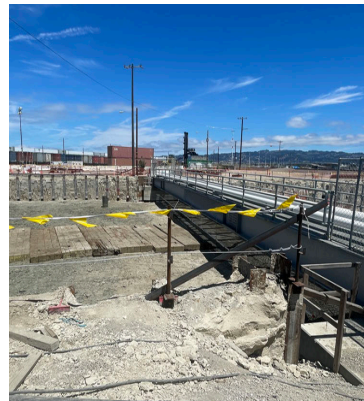




First row of tie-back installation.



Storm Drain being installed alongside new 7th Street alignment.



Excavation beneath  
Kinder Morgan utility bridge.



Tie back drill rig, drilling holes for  
tie back wall installation.

## GoPort Updates, Overview, Fact Sheets, etc.

<https://www.AlamedaCTC.org/programs-projects/goport-program>

For Updates and Additional Information call the GoPort Public Information Line at (510) 833-1234

### Y'Anad Burrell

GoPort Public Information Officer  
[GoPortPIO@alamedactc.org](mailto:GoPortPIO@alamedactc.org)

### Laura Arreola

Community Affairs Manager Port of Oakland  
[larreola@portoakland.com](mailto:larreola@portoakland.com)

To request language assistance services regarding GoPort information, please email: [GoPortPIO@alamedactc.org](mailto:GoPortPIO@alamedactc.org)

Connect to get the information you need!

Alameda County Transportation Commission • 1111 Broadway, Suite 800 • Oakland, CA 94607 • (510) 208-7400 • [www.AlamedaCTC.org](http://www.AlamedaCTC.org)