



May is Bike to Wherever Month! Read more about what Alameda CTC's is doing to celebrate on page 4



ALAMEDA COUNTY TRANSPORTATION COMMISSION

EXECUTIVE DIRECTOR'S REPORT

MAY 2025

Delivering on Our Promises

With the passage of Measure BB in 2014, Alameda County residents entrusted this agency to responsibly manage their tax dollars to provide transportation projects and programs that expand access and improve mobility. Alameda CTC activities support local communities while advancing equity, safety, clean transportation and the economy. Through the agency motto of "Plan. Fund. Deliver.", our work is an important part of fostering an even more vibrant and livable Alameda County.

With Alameda CTC's new Executive Director Tony Tavares starting the first of June, this is the last report I will be sharing as the Commission's Interim Executive Director.

It has been an honor to lead the organization over these past few months and I am delighted to welcome Executive Director Tavares to the helm.

Sincerely,
Carolyn



Project Updates

Alameda CTC's Express Lanes Program is Growing and Modernizing

Construction continues on Alameda CTC's I-680 Express Lanes Southbound Project from SR-84 to Alcosta Boulevard. Known as the "I-680 Gap Project," the effort is adding ten new miles of express lanes to connect Alameda CTC's southbound express lane on I-680 with express lanes operated by the Metropolitan Transportation Commission in Contra Costa County. Expected to be completed in early 2026, the project will close a critical gap in the network and create a seamless driver experience. Construction activities taking place this summer will include installation of power service for the various toll sites and laying of fiber optic cable that will serve as the communications network backbone.

On the I-580 corridor, Alameda CTC is moving forward with a project to upgrade the express lanes toll system that dates back to 2016. The I-580 Upgrade Project will replace aging equipment and update the express lane software to improve accuracy, efficiency and reliability. The project is in the design phase and anticipated to be complete in mid-2026.

Alameda CTC's express lanes on I-580 and I-680 continue to provide motorist benefits by offering a faster, more reliable travel option. Over 80 million express lane trips have been recorded across both corridors since inception. Average express lane speeds on both corridors average about 5 to 15 miles per hour faster than the general purpose lanes, depending on the time of day and location within the corridor. More information about these and other Alameda CTC projects can be found on the [Alameda CTC's Projects webpage](#).

TABLE OF CONTENTS

- 1 Project Updates
- 2 Planning Updates
 - Policy News
 - Programming News
- 3 Committee Activities
- 4 Other News

Planning Updates

Central County Community Connections Plan Kicks Off

A new plan is getting underway to address the impacts of transportation infrastructure on Central Alameda County communities near three heavily-traveled interstates: I-238, I-580, and I-880. Caltrans awarded Alameda CTC a Sustainable Transportation Planning Grant for more than half a million dollars last year to advance planning work to support a safe and reliable transportation network that serves all people and respects the environment. This past April the Commission approved a contract award to begin the work.

As an important component of the effort, the project team will partner with community stakeholders to identify priority safety, access, and climate resilience improvements. The highest priority improvements will then be advanced into conceptual design. Public engagement is anticipated to begin later this year with plan completion anticipated by spring 2027.

Policy News

State Update

On May 14, the Governor released the May Revision to the state budget, projecting a \$12 billion budget deficit, citing international trade concerns and the recent Los Angeles wildfires as some of the contributing factors for the severe gap. Negotiations among legislative leaders and the governor will follow with a deadline of June 15th to agree to a final budget. Leaders also expect the budget to require additional modifications as federal funding cuts become known later this year. The Governor and legislative leaders have also pledged to extend the cap and trade program this year, which funds a number of transportation programs including a major focus on transit.

Federal Update

Early in June, Commission Chair David Haubert will lead a subset of Commissioners to Washington, DC for the Commission's annual federal legislative visit. Plans include meetings to advocate for Alameda CTC policy and funding priorities with the Alameda County legislative delegation, administration officials and legislative committee staff.

Programming News

Piedmont Pedestrian Safety Project Expected to Be Complete this Summer; Majority of Funding from Measure BB

Alameda CTC is providing \$500,000 in Measure BB funding for the Piedmont Pedestrian Safety Project to enhance safety for pedestrians crossing on Grand Avenue at Greenbank Avenue and at Linda Avenue. Both locations will consist of bulb-outs, or curb extensions, that will allow for a shorter pedestrian crossing and enhance visibility.

Additional improvements include

intersection repaving, enhanced pavement markings, new pedestrian ramps, and installation of pedestrian activated solar powered Rectangular Rapid Flashing Beacons. Crossings that are shorter and more visible make it easier for drivers and pedestrians to see each other and shorten the distance and time people are crossing, reducing the chance of conflicts. These changes also help slow down turning cars, which makes crossing safer.

The total project cost is \$587,000. Construction of these improvements began on April 2025, and is expected to be complete in August 2025.




Programming News cont'd from page 2


2026 Comprehensive Investment Plan

Alameda CTC's Comprehensive Investment Plans (CIP) is a near-term strategic programming document through which fund sources administered by Alameda CTC are programmed, allocated, and documented. The CIP includes discretionary funding awarded by Alameda CTC and funding allocations for named capital projects from the Commission's Measure B and BB Transportation Expenditure Plans. It does not include Direct Local Distribution funding.


Last fall, Alameda CTC released the 2026 Comprehensive Investment Plan (CIP) call for projects, with applications due on October 31, 2024. Earlier this month, Alameda CTC staff recommended approval of the 2026 CIP program, shifting the five-year programming horizon to Fiscal Years 2025-26 through 2029-30. The programming recommendations include:



\$60.16M
in new 2026 programming allocations



\$32.09M
in previously approved programming actions that occurred after the 2024 CIP Update on May 23, 2024



\$2.29M
in technical adjustments

Upon approval of the 2026 CIP, Alameda CTC will enter into Project Funding Agreements with project sponsors.

Committee Activities

No advisory committees met in May. The Alameda County Technical Advisory Committee (ACTAC) and Paratransit Advisory and Planning Committee (PAPCO) are scheduled to meet in June. Visit [Alameda CTC's Meetings webpage](#) for details on upcoming meetings.

Finance Updates

In May, the Finance team will present the proposed Fiscal Year 2025-2026 budget to the Finance and Administration Committee (FAC) and Commission for review and approval. The proposed budget is a culmination of several month's of Finance Team work and includes projected revenues of \$599.3 million and anticipated expenditures of \$522.5 million, resulting in a net increase in fund balance of \$76.8 million and a projected consolidated ending fund balance of \$1,016.2 million.

The team will also bring forward the revenues and expenditures report, which compares the adopted budget to actuals through March 31, 2025.

Contracting Opportunities

Alameda CTC anticipates upcoming solicitations for the following professional services and construction contracts:

Professional Services

- I-680 Express Lane/High Occupancy Vehicle Lane Environmental and Design Services Oversight Project Management and Project Support Services
- Express Lanes Maintenance Services
- Oversight Project Management and Project Support Services
- Project Controls Services
- Contract Compliance and Equity Support Services
- Paratransit Coordination Services
- Express Lane System Manager and Program Support Services

Construction

- San Pablo Avenue Parallel Bike Improvements

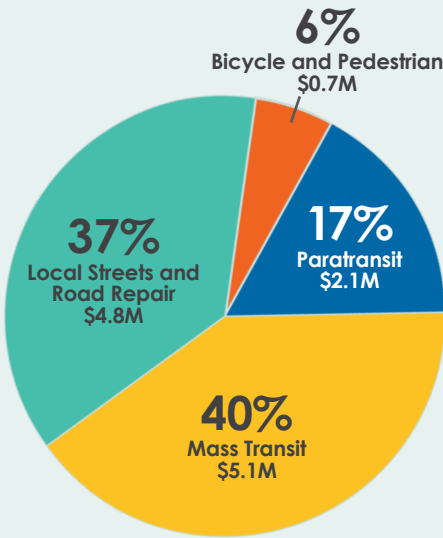
For more information, visit the [Contracting Opportunities webpage](#).

Transportation Investments

Alameda CTC supports the future of Alameda County by equitably investing in projects and programs throughout the county to improve transportation.

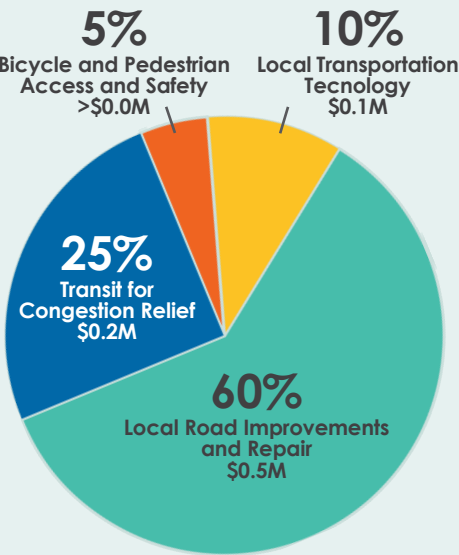
Measure BB Program Distributions

Measure BB direct local distributions began in April 2015 and total more than \$1.10 billion; over \$12.8 million was distributed in February 2025.



Vehicle Registration Fee

Since 2011, Alameda CTC has distributed more than \$98.6 million for local road improvement and repair; \$0.9 million was collected in February 2025.



Agency Activities

During May 2025, Alameda CTC either hosted, sponsored or participated in the following events:

- May 2 – CalMentor Luncheon
- May 6 – 9: WTS annual conference, Toronto Canada
- May 14: Oakland Alameda Access Project Virtual Open House
- May 15: California Transportation Commission Meeting
- May 28 – 31: NACTO Conference, Washington DC
- May 30 – Bay Area County Transportation Agencies Executive Roundtable

Bike Mobile Outreach Events:

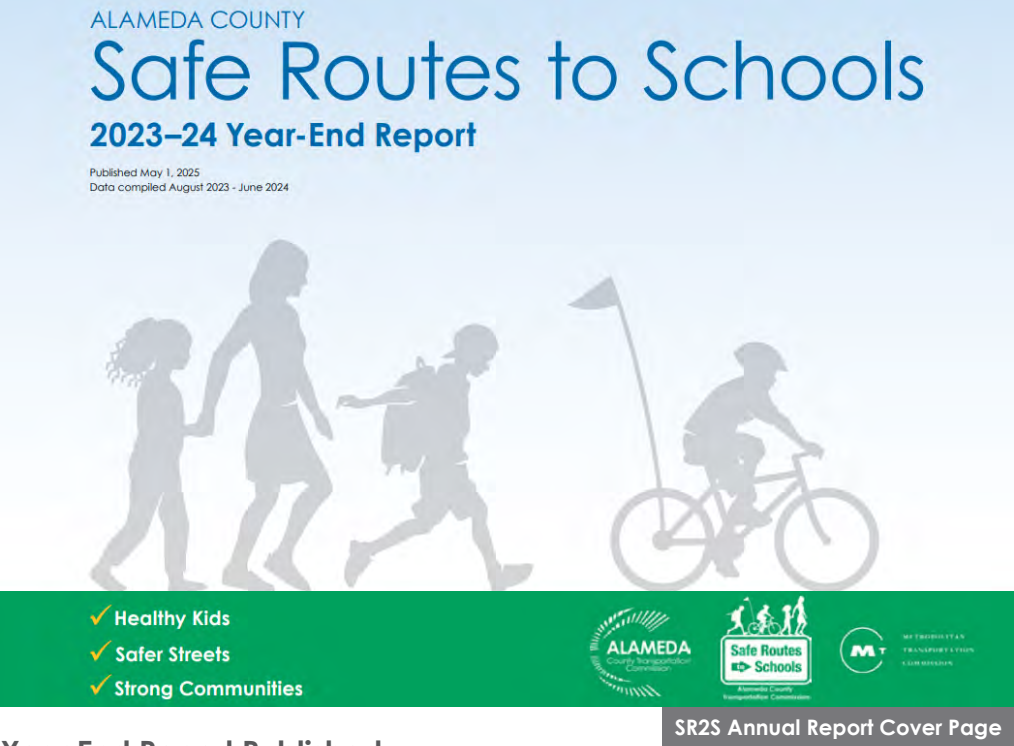
- May 1 – Joe Michell Elementary, Livermore
- May 6 – Tyrrell Elementary, Hayward
- May 8 – Knowledge Enlightens You (KEY) Academy Elem/ Middle, Hayward
- May 9 – Lincoln Middle, Alameda
- May 12 – Cabrillo Elementary, Fremont
- May 13 – Amelia Earhart Elementary, Alameda
- May 17 – San Leandro Community Center, San Leandro
- May 19 – Donlon Elementary, Pleasanton
- May 21 – Arroyo High, San Lorenzo
- May 22 – Garfield Elementary, San Leandro
- May 27 – LIFE Academy Middle/ High, Oakland
- May 29 – Boys and Girls Club of Oakland, Oakland

Other News

Bike Month!

May 2025 kicked off National Bike Month and Alameda County's Safe Routes to Schools (SR2S) Program celebrated [Bike to School Day](#) on May 15. Annually, students throughout the county are joined by their families and broader school community to try riding bikes to school, some for the first time, and are encouraged to renew their commitment to the many benefits of mode shift through biking.

Bike to School Day coincides with [Bay Area Bike to Wherever Days](#) (formerly Bike to Work Day), which is also held in May as well as Alameda CTC's own iBike awareness campaign.



Year End Report Published

Each year SR2S releases an annual report documenting accomplishments from the previous school year. To learn more about program activities and successes from the 2023-24 school year, please visit the program's website [here](#).

June 1 Marks Start of New Executive Director Tony Tavares

Commission members and staff are pleased to welcome Tony Tavares as the new Executive Director of the Alameda CTC. Executive Director Tavares brings decades of leadership experience from Caltrans, where he most recently served as Statewide Director overseeing a \$20 billion budget, more than 22,000 employees, and transportation systems across California—including major roles in the Bay Area and Southern California. He has played a central role in delivering key infrastructure projects, implementing Senate Bill 1, and advancing statewide goals in climate action, equity, and multimodal transportation.

Tony's vision is rooted in building a safe, accessible, and sustainable transportation system through innovation and strong partnerships. He will start his new role on June first, leading Alameda CTC into its next chapter of delivering vital transportation programs for the people of Alameda County.