



Get ready for Bike to Wherever Month in May!
Read more about Alameda CTC's campaign on page 4



ALAMEDA COUNTY TRANSPORTATION COMMISSION

EXECUTIVE DIRECTOR'S REPORT

APRIL 2025

Delivering on Our Promises

With the passage of Measure BB in 2014, Alameda County residents entrusted this agency to responsibly manage their tax dollars to provide transportation projects and programs that expand access and improve mobility. Alameda CTC activities support local communities while advancing equity, safety, clean transportation and the economy. Through the agency motto of “Plan. Fund. Deliver.”, our work is an important part of fostering an even more vibrant and livable Alameda County.

Sincerely,
Carolyn

TABLE OF CONTENTS

- 1 Project Updates
- 2 Planning Updates
- 3 Programming News
 - Finance Updates
- 4 Agency Activities
 - Committee Activities
 - Other News



Project Updates

Join Us for the I-80 Gilman Improvements Project Ribbon Cutting!

The Alameda County Transportation Commission (Alameda CTC) and Caltrans are nearing completion of the Interstate 80 (I-80) Gilman Interchange Improvements Project.

Both Phase 1 and 2 of the project tackled safety challenges through innovative designs aimed at improving operations, connectivity and safety along the I-80 Corridor—one of the region's busiest routes, carrying nearly 300,000 vehicles daily.

The Gilman Street interchange, a critical access point for local, regional, and interstate activities, had long been a safety hotspot. As a gateway to West Berkeley and a central link of the Bay Trail—a 350-mile pedestrian and bicycle trail encircling the San Francisco Bay—these improvements were essential for cars, pedestrians, bicyclists and other transportation users.

Phase 1 introduced a new pedestrian and bicycle overcrossing south of Gilman Street. The bridge received the 2025 Engineering Excellence Award from the American Council of Engineering Companies for its innovative design and positive community impact.

The tied arch bridge spans over all eight freeway traffic lanes, significantly enhancing mobility while promoting safety and sustainable transportation options.

Phase 2 improves traffic flow by reconfiguring I-80 ramps and intersections and introducing single roundabouts on both sides of I-80. Gilman Street was also repaved and enhanced from the Tom Bates Regional Sports Complex to 4th Street. Other enhancements include a two-way divided bicycle lane on the south side of Gilman Street, improved connectivity with a new traffic signal, new aesthetic treatments for hardscape, landscape and concrete wall features, and upgrades to signage, lighting and rail crossing.

Landscaping crews will remain active over the next three years for planting and care. The project also extends the Bay Trail west along Gilman Street and relocated critical utility lines to accommodate the improvements.

This transformative project has greatly improved traffic efficiency, safety, and access at the I-80/Gilman Street interchange, benefiting the community for years to come.

All are invited to join in celebrating the completion of this project on April 28 at 11 AM. Please email RSVP@alamedactc.org for more information.

Planning Updates

Alameda CTC 2024 Performance Report

2024 Performance Report

Congestion Returns to Alameda County Freeways

Alameda CTC published the 2024 Performance Report earlier this month, which summarizes key findings related to countywide demographics, the economy and goods movement, auto congestion, transit performance, and active transportation safety in Alameda County using the latest data available.

The annual Performance Report fulfills specific requirements established by state congestion management program legislation. It also provides an opportunity to investigate a wide range of topics relevant to the county's transportation system in order to illuminate trends as they unfold and support informed decision making.

Top findings for this year's performance report include:

- Freeway congestion has largely returned to pre-pandemic levels in Alameda County;
- Transit ridership has recovered at an uneven rate across the county's seven transit operators, with bus and ferry riders largely back while rail ridership has been slower to recover;

- Safety on our roadways also remains a concern with an elevated rate of severe and fatal collisions in post-pandemic years; and
- The share of employees primarily working from home continued to fall, although it remained roughly three times as high as it had been prior to the pandemic at 20 percent in 2023, the latest year for which data was available.

This year's Performance Report also incorporates more detailed data collected and analyzed as part of the agency's legislatively mandated biennial monitoring effort.

The Performance report, fact sheets, and data tables are available on the [Congestion Management Program](#) webpage under Performance Report and Multimodal Monitoring. This year's findings underscore the importance of the Commission's priority areas of safety, equity, climate, and economy and inform our planning and advocacy, including updates to the Countywide Transportation and Active Transportation Plans currently underway.

Oakland Alameda Access Project open houses announced

Alameda CTC will host four in-person open houses at the end of April and one virtual presentation in May to provide updates and pre-construction information on the Oakland Alameda Access Project. Preregistration for in person events is not necessary. Dates, times and locations include:

Open House #1

Wednesday, April 23, 2025, 5-6:30pm
BLOC15 Event Venue
252 2nd St, Oakland, CA 94607

Open House #2

Thursday, April 24, 2025, 6-7:30pm
Alameda Chamber of Commerce
2215-A S Shore Center, Alameda, CA 94501

Open House #3

Tuesday, April 29, 2025, 4:30-6:00pm
Oakland Asian Cultural Center
388 9th St Ste 290, Oakland, CA 94607

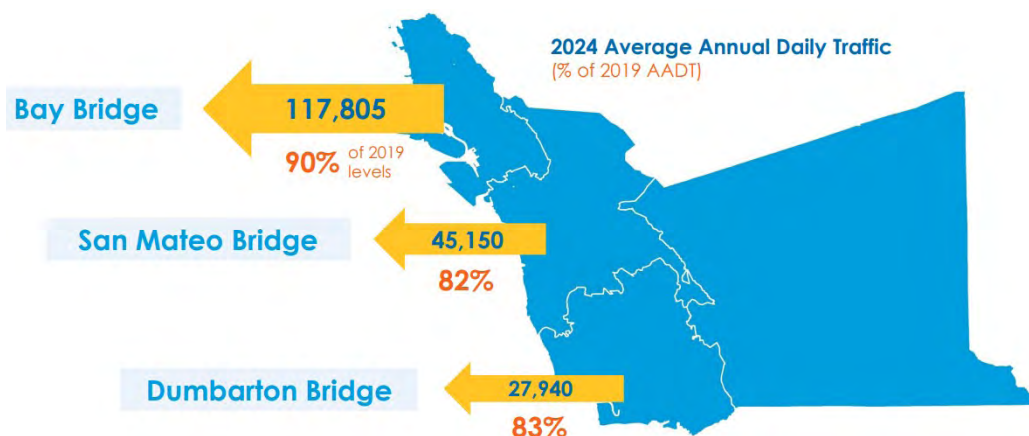
Open House #4

Wednesday, April 30, 2025, 5-6:30pm
College of Alameda (Student Lounge)
555 Ralph Appenzato Memorial Pkwy, Alameda, CA 94501

Virtual Presentation

Wednesday, May 14, 2025, 5-6:30pm
Preregistration is required:
bit.ly/OAAPVirtualPresentation

Go to oaklandalamedaaccessproject.com for more information.



Graphic showing 2024 bridge trips compared to 2019

Programming News

State Transit Assistance County Block Grant Program

The State Transit Assistance (STA) program is a flexible funding source for capital and operating purposes for transit. Historically, the Metropolitan Transportation Commission (MTC) allocated STA funds to transit operators through various programs. Since FY 2018-19, MTC shifted part of the STA funding to County Transportation Agencies (CTAs) through a new STA County Block Grant Program.

The STA program is divided into revenue-based and population-based categories, with the latter allocated to regional planning agencies. Alameda County's share of the STA Block Grant is 17.68% of the nine-Bay Area County program, distributed across three categories: Small Operator Guarantee (24%), Regional Paratransit (25%), and Means-based/Lifeline Transportation (51%). In FY 2025-26, Alameda County's projected revenue is approximately \$9.54 million.

Alameda CTC will submit a Commission-approved resolution confirming the distribution to MTC by May 1, 2025 and continue to coordinate with transit operators and MTC to fulfill the required annual program reporting.

BART's Next Generation Fare Gates Program

BART is upgrading its system with new fare gates to enhance customer experience and safety. The new gates feature state-of-the-art technology to reduce fare evasion, improve accessibility for people with wheelchairs, bikes, and strollers, and

increase reliability and maintenance efficiency. Alameda CTC is contributing \$19.6 million from Measure BB funding to the \$34.9 million project, which will replace all fare gates at 22 BART stations in Alameda County. As of the end of 2024, new fare gates have been installed at seven BART stations in Alameda County. BART will complete systemwide deployment of new fare gates by the end of 2025.

Finance Updates

Preparing the Annual Budget

During the month of April, the finance team worked on the development of the FY2025-26 budget, engaging with each agency department to collect information related to budget needs for projects and programs expected to be delivered during the upcoming fiscal year. The finance team intends to bring a balanced and sustainable proposed Alameda CTC FY2025-26 budget to the Finance and Administration Committee and Commission for review and approval during their May meetings.

Contracting Opportunities

Alameda CTC anticipates upcoming solicitations for the following professional services:

- Oversight Project Management and Project Support
- Project Controls Services
- Contract Compliance and Equity Support Services
- Paratransit Coordination Services
- Express Lane System Manager and Program Support

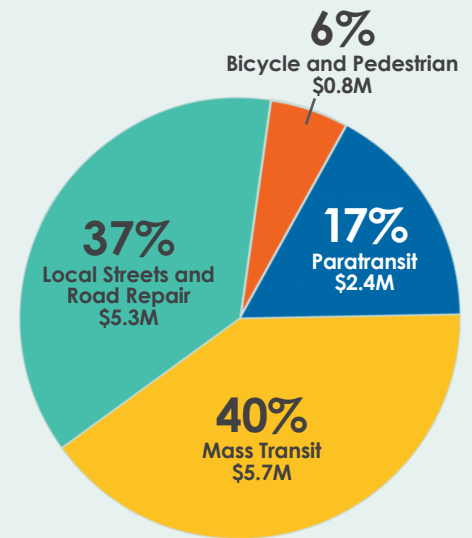
For more information, visit the [Contracting Opportunities webpage](#).

Transportation Investments

Alameda CTC supports the future of Alameda County by equitably investing in projects and programs throughout the county to improve transportation.

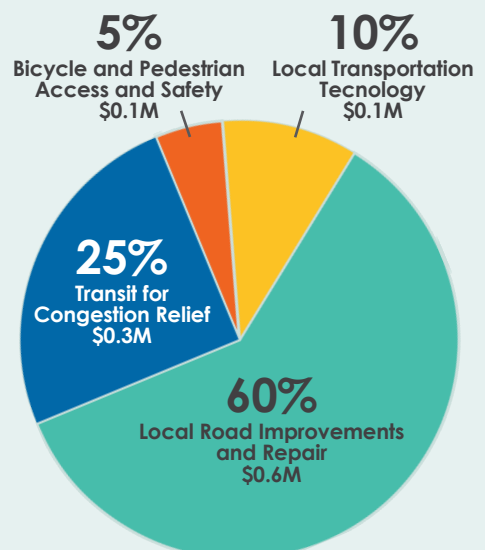
Measure BB Program Distributions

Measure BB direct local distributions began in April 2015 and total more than \$1.10 billion; over \$14.1 million was distributed in January 2025.



Vehicle Registration Fee

Since 2011, Alameda CTC has distributed more than \$98.6 million for local road improvement and repair; over \$1.0 million was collected in January 2025.



BART Transit riders using next Gen Fare Gates Program

Agency Activities

During April 2025, Alameda CTC either hosted, sponsored or participated in the following events:

- April 7 – Oakland Alameda Access Project Monthly Public Stakeholder Update, Virtual
- April 23 – Oakland Alameda Access Project (OAAP) Open House #1, Oakland
- April 24 – OAAP Open House #2, Alameda
- April 25 – Bay Area County Transportation Agencies Executive Roundtable
- April 27 – Gilman District Street Fair Community Outreach, Berkeley, CA
- April 28 – Gilman/I-80 Interchange Improvements Project Ribbon Cutting
- April 29 – OAAP Open House #3, Oakland
- April 30 – OAAP Open House #4, Alameda

Bike Mobile Outreach Events:

- April 8 – Martin Luther King, Jr. Middle, Berkeley
- April 9 – Eden Gardens Elementary, Hayward
- April 10 – Robertson High, Fremont
- April 11 – Brookvale Elementary, Fremont
- April 15 – Alameda High, Alameda
- April 17 – Birch Grove Intermediate, Newark
- April 19 – Tassafaronga Park and Rec. Center, Oakland
- April 22 – Pleasanton Middle, Pleasanton
- April 24 – Anthony W. Ochoa Middle, Hayward
- April 26 – William G. Paden Elementary, Alameda
- April 27 – Montclair Elementary, Oakland

Committee Activities

Advisory committee highlights

Community advisory committee highlights for the month of April include:

- April 24 - Bicycle and Pedestrian Advisory Committee (BPAC) received an update on the Countywide Transportation Plan (CTP) and Countywide Active Transportation Plan (CATP). Input on the plans was also sought from committee members. Attendees also approved election of the Committee Chair and Vice Chair for FY 2025-26 during the meeting.

Visit [Alameda CTC's Meetings webpage](#) for details about these and other upcoming meetings.

Other News

Show your Pedal Potential this May!

May is Bike to Wherever Month, and Alameda CTC is gearing up to celebrate by promoting cycling as a fun, healthy, and sustainable mode of transportation. This year's theme, "Show your pedal potential," aims to inspire those who may consider biking to work, school, for errands, or for fun, but may respond to that extra encouragement to act on their interest. In addition to social media, keep an eye out for revamped ads on AC Transit and LAVTA buses, at BART stations, and IKE Smart City Kiosks in Oakland and Berkeley.

Pre-pandemic, Bike to Work Day (BTWD) was a highlight of Bike Month, celebrating bicycles as a great way to get to work and offering a chance for non-regular bike commuters to give it a try. During the pandemic, the event evolved into Bike to Wherever Days, adapting to the changing needs and lifestyles of the community. This shift encouraged people to use their bikes for a wider range of activities, such as running errands, meeting friends outdoors, and commuting safely.

Alameda CTC will also be encouraging community members to "Show your pedal potential" at three community events where we will hand out stickers and celebrate the joy of cycling. Whether it's for commuting, visiting friends and family, or simply enjoying a leisurely ride, the goal is to make cycling a regular part of daily life in Alameda County.

Join the celebration this May and discover the joys of biking to wherever your journey takes you!

