



East Bay Greenway Multimodal Project – Hayward Segment

April 2025

SHARE YOUR INPUT ON THE EAST BAY GREENWAY MULTIMODAL PROJECT IN HAYWARD!

EXISTING CHALLENGES

Currently, there is no continuous walking and biking path connecting downtown Hayward to the South Hayward BART station. People who walk or bike in this area may experience challenges like fast-moving traffic, missing or uneven sidewalks and crosswalks, and poor lighting.

PROPOSED IMPROVEMENTS

As part of the East Bay Greenway Multimodal Project, the Alameda County Transportation Commission (Alameda CTC) and the City of Hayward are partnering to address these challenges and improve travel options for people of all ages and abilities. We're excited to share our initial proposal for redesigning some of the streets in this area, including adding lighting and landscaping. Turn this flyer over to see the improvements we are proposing on page 2.

NEXT STEPS

We need the community's input! Your feedback will inform our initial designs. **We are collecting input for this phase of work through the end of April 2025.**

After developing the initial designs, we will secure environmental approval, prepare final designs, and secure funding to construct the Hayward segment.

SHARE YOUR THOUGHTS!

Please scan the QR code to share your thoughts on the proposed improvements through a feedback form. You can also call us at 510.583.4792 to share your thoughts by phone.



**SCAN THE QR
CODE TO SHARE
YOUR INPUT**

TRANSLATION AVAILABLE | TRADUCCIÓN DISPONIBLE 提供翻译 | BẢN DỊCH CÓ SẴN | MAGANDANG SALIN

This is about future changes to the streets that will benefit and may affect you. Scan the QR code to visit the website and review this information in another language.

Se trata de futuros cambios en las calles que le beneficiarán y pueden afectarle. Escanee el código QR para visitar el sitio web y revisar esta información en otro idioma.



这涉及未来对街道的改动，这些改动将为您带来益处，同时可能会对您产生影响。请扫描二维码访问网站，并以其他语言查看相关信息。



Đây là những thay đổi trong tương lai cho các con đường sẽ đem lại lợi ích và có thể ảnh hưởng đến quý vị. Hãy quét mã QR để truy cập trang web và xem thông tin này bằng một ngôn ngữ khác.



Ito ay tungkol sa mga darating na pagbabago na may benepisyo at maaaring makaapekto sa iyo. I-scan ang QR code upang bisitahin ang website at basahin ang Impormasyon sa ibang wika.



PROJECT BENEFITS

The East Bay Greenway Multimodal Project will bring many benefits to residents of Hayward and people who live, work, and play in the East Bay.



Safety for people of all ages and abilities who walk and bike



Connections to transit, schools, housing, businesses, and other walking and biking routes



Trees and landscaping to visually improve the environment and reduce heat



Lighting to improve visibility for people using the road



Climate protection and sustainable communities through reduced greenhouse gas emissions



Health by providing additional active transportation choices

LEARN MORE

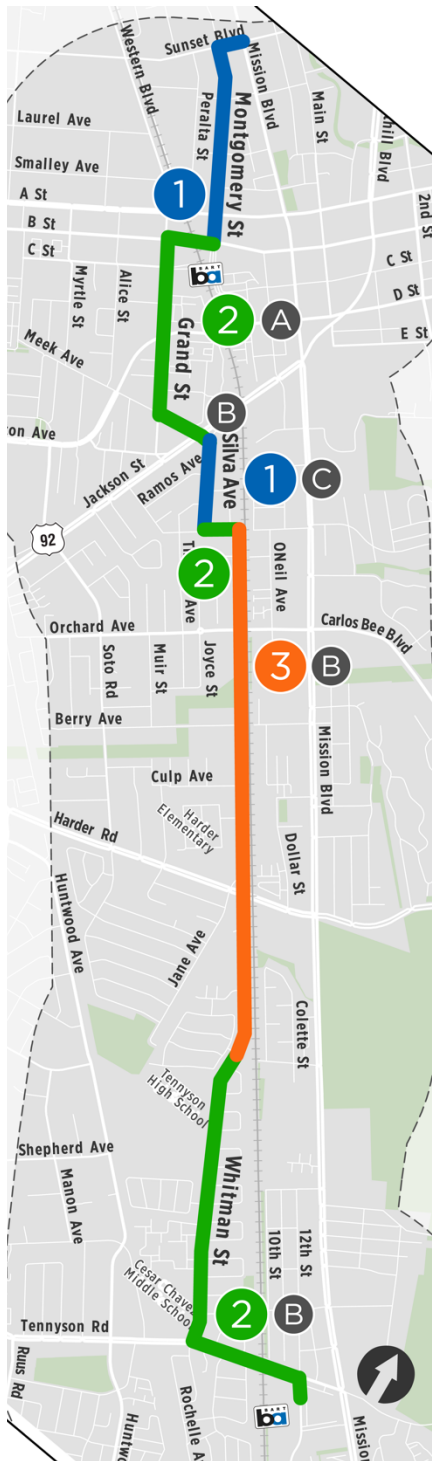
For more information about the East Bay Greenway Multimodal Project or the proposed improvements in Hayward, please visit the project website.



Scan to visit
the project
website

WHAT WILL THE NEW STREETS BE LIKE?

Each street in this area has unique challenges and opportunities. Our goal is to create a consistent experience while considering space, driveway and intersection locations, and other factors. In some areas, we may need to adjust parking or the number of lanes to make room for everyone using the road.

**Proposed Improvements**

Shown below with photo examples.

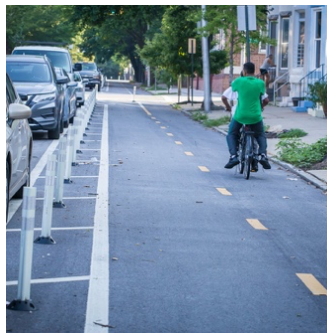
- 1 Bike Boulevards & Traffic Calming:**
On Montgomery Street and Silva Avenue



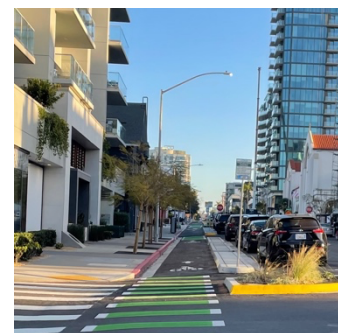
- 3 Shared-Use Paths:**
On Whitman Street



- 2 Protected Bike Lanes:**
On B Street, Grand Street, Meek Avenue, Sycamore Street, Whitman Street, Tennyson Road, and Dixon Street

**Lighting & Landscaping:**

Throughout the corridor

**Potential Impacts**

- A Vehicle lane reduction:**
B Street and Grand Street

- B Parking removal:**
Portions of Meek Avenue, Sycamore Street, Whitman Street, and Tennyson Road

- C Reduction to single lane of traffic:**
Portion of Silva Avenue