



ALAMEDA COUNTY TRANSPORTATION COMMISSION

# 2024 Paratransit Discretionary Grant Program Application Workshop



**Krystle Pasco (she/her), Alameda CTC**

**January 11, 2024**

---

# Today's Agenda

- Welcome and Introductions
- Overview of the 2024 Paratransit Discretionary Grant Program
- Application Walk-Through
- Schedule
- Q&A

# Alameda County Transportation Commission

- **2010:** merger between:
  - Alameda County Congestion Management Agency (ACCMA)
  - Alameda County Transportation Improvement Authority (ACTIA)
- **Mission** is to plan, fund and deliver transportation programs and projects that expand access and improve mobility to foster a vibrant and livable Alameda County.



---

# Alameda County Transportation Commission

- Transportation Sales Taxes
  - **1986:** Voters approved Measure B ½ cent sales tax
  - **2000:** Voters reauthorized Measure B
  - **2014:** Voters approved Measure BB
    - Increased to 1 cent
    - Authorized collection for 30 years

# Paratransit Program Funding

- Allocations from the TEPs to Transportation for Older Adults and People with Disabilities
  - Measure B: 10.45%
  - Measure BB: 10.00%
- 3 types of funding
  - DLD funding for East Bay Paratransit (Measure B: 5.53%; Measure BB: 6.00%)
  - DLD funding for city paratransit programs (Measure B: 3.39%; Measure BB: 3.00%)
  - Discretionary funds for coordination and filling gaps (Measure B: 1.43%; Measure BB: 1.00%)

---

# Background

- The Paratransit Discretionary Grant Program (PDGP) funds projects and programs through a competitive process to meet needs that are not currently being met through existing ADA-mandated paratransit or City programs.
- Approximately \$12M in available Measure B and BB
- 5-year programming period; FY2024-25 to FY2028-29
- 2020 PDGP
  - Call for Projects in November 2018
  - Fifteen applications – \$10.5 million requested
  - Fourteen applications were funded fully or partially for a total of \$8.99 million
  - Grant period: July 1, 2019 to June 30, 2024

# Program Focus

- Complement Direct Local Distribution (DLD) funded programs (traditional trip-provision services).
- 2024 PDGP will be focused on mobility management activities that improve consumers' ability to access services, improve coordination between programs, and/or address gaps in the transportation system.



---

# Mobility Management

- Mobility management activities aim to:
  - Equitably enhance people's travel options and access to services
  - Effectively communicate and disseminate information to the public including one-call/one-click and other technology solutions
  - Encourage older adults and people with disabilities who are able to use fixed-route public transit to do so
  - Improve coordination and partnerships between new or existing programs and services
  - Address critical gaps in the transportation system for older adults and people with disabilities
  - Meet needs cost effectively and efficiently
  - Increase equitable access to and utilization of programs and services



# Mobility Management (continued)

- Examples of mobility management activities include:
  - Travel Training
  - Trip planning assistance to improve access
  - One-Call/One-Click type programs
  - Door-through-Door/Volunteer Driver Programs
  - Programs or projects that provide critical, on-demand wheelchair accessible transportation service throughout Alameda County



**Services Available to You**

Answer a couple questions to help discover which service might be best:

Do you have a disability that prevents you from riding public transit?

Yes  No

[Next](#)

Still need help? Call 2-1-1

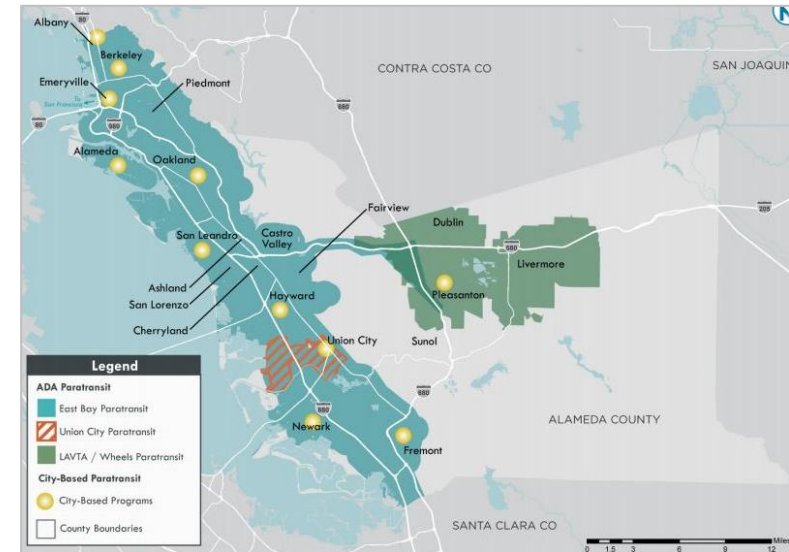
**Services and City Programs In Your Community**

Select Community

Alameda	Albany	Ashland	Berkeley
Castro Valley	Cherryland	Dublin	Emeryville
Fremont	Hayward	Livermore	Newark
Oakland	Piedmont	Pleasanton	San Leandro
San Lorenzo	Sunol	Union City	

# Mobility Management (continued)

- More examples include:
  - Coordination of service provision at the planning area level or countywide (separate from the cost of traditional trip provision, e.g. the administration costs for a planning area-wide program)
  - Projects or programs that fill unique and/or critical transportation needs and gaps that are not addressed through traditional trip-provision models



---

# Mobility Management (continued)

- More examples include:
  - Capital improvements and equipment purchases are eligible if directly related to the implementation of a project or program within an eligible category, including but not limited to:
    - Accessible vehicle and equipment purchase
    - Software purchases (e.g. to provide one-call/one-click services, track vehicles, improve fare payment, etc.)
    - Transit stop improvements that support improving access to public transit for older adults and/or people with disabilities
    - Capital projects to improve accessibility at shuttle stops

# Program Priorities

- Priority (in no particular order) will be given as follows:
  - Projects or programs that are identified in a Countywide or Regional Plan or Assessment
  - Multi-jurisdictional projects or programs
  - Projects or programs that provide critical, on-demand wheelchair accessible transportation service throughout Alameda County
  - Projects or programs that increase equitable access to and utilization of existing programs and services
  - Other priorities as recommended by PAPCO



## Traveling in Alameda County and throughout the Bay Area doesn't have to be difficult.

The Access Alameda website and guide are produced by the Alameda County Transportation Commission (Alameda CTC) and funded by Measure BB, Alameda County's transportation sales tax measure.

This website can help you identify and connect with transportation services available to you in Alameda County, including a range of options specifically designed for older adults and people with disabilities.

This information will show you which services you can use based on where you live, where you're going, your age, and your ability to use public transit. Options may include public transit, Americans with Disabilities Act (ADA) paratransit, affordable same-day services, shuttles, volunteer driver programs, and hands-on travel training on how to use these services.

**SERVICES AVAILABLE TO YOU**

Answer a couple of questions to help discover which service might be best:

Do you have a disability that prevents you from riding public transit?

Yes  No

**NEXT**

**Still need help?**  
Call 2-1-1

## Services



## ACCESS ALAMEDA

Guide to Transportation Services for Seniors and People with Disabilities in Alameda County



(510) 208-7400  
AccessAlameda.org  
June 2018

---

# Evaluation Framework

- Projects and programs will be evaluated based on:
  - Demonstrate effectiveness at meeting mobility management goals
  - Project sufficient demand for the project or program
  - Are ready for implementation
  - Provide service across jurisdictional boundaries
  - Demonstrate coordination and collaboration with other service providers in their planning area
  - Are effective, according to adopted performance measures and past performance (where applicable) or projected performance supported by substantive evidence of potential for success

---

# Evaluation Framework (continued)

- Are cost effective
- Leverage funds (including MB and MBB DLD reserves)
- Have been identified as a priority in relevant countywide or regional plans or needs
- Support geographically equitable distribution of resources throughout the County
- Demonstrate strategies to ensure equitable access to and utilization of programs and services

---

# Eligible Applicants

- Cities of Alameda, Albany, Berkeley, Dublin, Emeryville, Fremont, Hayward, Livermore, Newark, Oakland, Piedmont, Pleasanton, San Leandro, Union City
- County of Alameda
- Transit agencies Altamont Corridor Express (ACE), Alameda-Contra Costa Transit District (AC Transit), San Francisco Bay Area Rapid Transit District (BART), Livermore Valley Transportation Authority (LAVTA), Union City Transit, and San Francisco Water Emergency Transportation Authority (WETA)
- East Bay Regional Parks District (EBRPD)
- Alameda County Transportation Commission (Alameda CTC)
- Non-profit organizations if the non-profit provides letter(s) of support from local agency and/or transit providers to confirm service coordination and project or program support

---

# Requirements

- Maximum grant size is \$250,000 per fiscal year; there is no minimum grant size.
- **Minimum Matching Requirements**
  - Projects or Programs: 12% local match for DLD recipients, and 5% for non-DLD recipients.
  - Plans and Studies: 50% local match
  - Shuttle and transit operations: 50% local match
  - “In-kind” costs are not eligible.
  - Matching funds must be expended concurrently and proportionally to the Alameda CTC's administered funds allocated to the phase for the project.
  - DLD recipients must demonstrate a commitment to using their MB/MBB DLD reserves.
  - Matching funds contributed to a project or program beyond the minimum required level may increase the competitiveness of the application.



---

# Requirements (continued)

- **Letter(s) of Support**

- All applicants must work in coordination with other service providers in their planning area.
- To demonstrate this support:
  - Applicants must describe how they are coordinating with local jurisdictions, transit agencies, and non-profit organizations to fill service gaps and complement existing services.
  - Non-profit organizations are required to provide a letter(s) of support from a local agency and/or transit providers to confirm service coordination and project or program support.
  - All applicants are encouraged to provide letters from partners to demonstrate community support and coordination.

---

# Implementation Guidelines

- Eligible projects and programs must conform to PAPCO-adopted Implementation Guidelines and Performance Measures – Special Transportation for Seniors and People with Disabilities (Paratransit) Program
- Refer to the most recent guidelines for detailed eligibility requirements and service descriptions here:  
<https://www.alamedactc.org/programs-projects/senior-disabled-transport>

---

# Equitable Access and Utilization

- In accordance with Alameda CTC's equity goals and initiatives, projects and programs will be expected to understand the demographic makeup of their community, including race/ethnicity, gender, orientation, limited English proficiency, income, age, and disability.
- Projects and programs should be designed to conduct equitable and inclusive engagement and measure and report equity outcomes of program participation.

---

# Monitoring and Performance Measures

- Progress reports will be required every six (6) months illustrating program/project progress and funds spent.
- Applicants must identify program/project goals, deliverables, and performance measures that will be reported on in these progress reports.

---

# Application Walk Through

- **Section A:** Summary Information
- **Section B:** General Information
- **Section C:** Need/Benefits/Readiness
- **Section D:** Cost and Funding Sources
- **Section E:** Milestone Schedule
- **Section F:** Performance Measures and Targets
- **Section G:** Attachments

---

# Application Walk Through (continued)

- **Section A:** Summary Information

- Primary and secondary contact

- **Section B:** General Information

- Q5 (detailed scope) – separate attachment, 2 pages max
- Q8 (map) – separate attachment, Google maps okay
- Q9 (service area) – select all that apply or Countywide

---

# Application Walk Through (continued)

- **Section C: Need/Benefits/Readiness**

- **Need/benefits** – see list of example countywide/regional plans or assessments
- **Coordination** – include list of partners
- **Readiness** – implementation ready and sustainability
- **Demand** – include number of service units and letters of support
- **Technology and Innovation** – describe innovation/emerging tech
- **Equity** – include demographic data and inclusive outreach and engagement approach

---

# Application Walk Through (continued)

- **Section D: Cost and Funding Sources**

- Required detailed budget (Excel file)
  - Estimated Expenditures
    - ✓ Staff/labor
    - ✓ Other direct costs
  - Estimated Revenues
    - ✓ Funding sources
    - ✓ Required match
- See tab: Description of Costs for more info on eligible costs



---

# Application Walk Through (continued)

- **Section E:** Milestone Schedule

- Include key tasks or milestones

- **Section F:** Performance Measures and Targets

- Include measures and targets based on 6-month reporting periods
- Refer to most recent Paratransit Program Implementation Guidelines and Performance Measures:
  - <https://www.alamedactc.org/programs-projects/senior-disabled-transport>

---

# Application Walk Through (continued)

- **Section G: Attachments**

1. **Program/Project Scope** (Section B, Question 5)
2. **Limits/Location Map** (Section B, Question 8)
3. **Need/Benefit Document(s)** (Section C, Question 10)
4. **Letter(s) of Support** (Section C, Question 11)
5. **List of partners** (Section C, Question 12)
6. **Partner Agency Letter(s)** (Section C, Question 12)
7. **Detailed Budget** (Section D)
8. **Additional Information** (if necessary)

# Schedule

- **Dec 11** – call for projects is released
- **Dec 18/Jan 11** – application workshops
- **Jan 31, 2024** – applications due
- **Feb/Mar** – staff analysis and recommendation
- **Mar 25** – PAPCO will consider/approve recommendation
- **Jul 1** – grants start



---

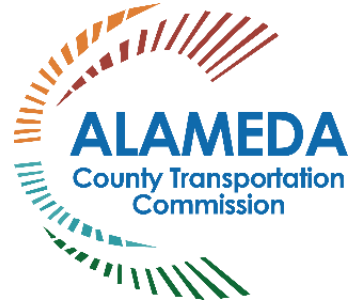
# Resources

Resources for the 2024 PDGP call for projects, including the application, can be accessed from the Alameda CTC's website at: <https://www.alamedactc.org/funding/funding-opportunities>.

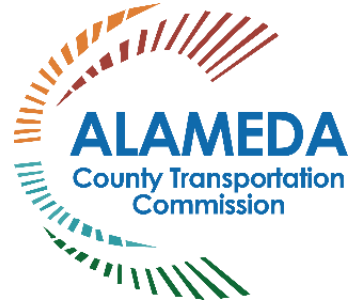
## Interested Parties List:

<https://forms.gle/cEfahcMCdvf32MVA9>





# Q&A



# Thank You

Krystle Pasco (she/her),  
Senior Program Analyst/Paratransit Coordinator  
[kpasco@alamedactc.org](mailto:kpasco@alamedactc.org) | 510-208-7467

For more information, visit [www.AlamedaCTC.org](http://www.AlamedaCTC.org)