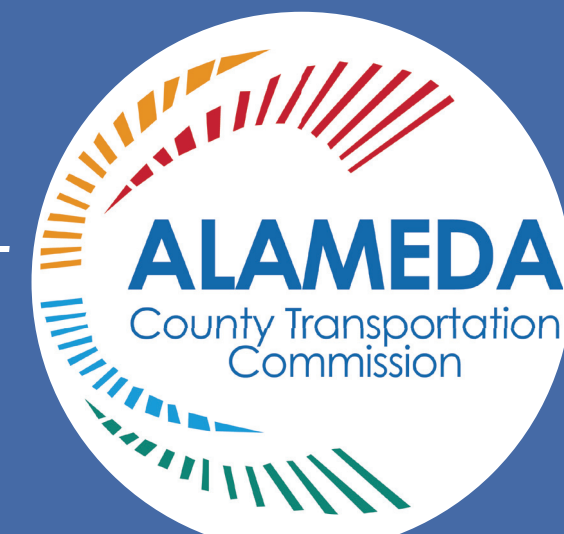


# San Pablo Ave Safety Enhancements and Parallel Bike Improvements

## Segment 1: Brighton Ave to Solano Ave



**Legend**

**Bus Improvements**

- Bus Stop Upgrade (Existing Location to Remain)
- Bus Stop Moved to Adjacent Location
- New Bus Stop Location
- New Bus Bulb

**Bicycle Network Improvements and Traffic Calming**

- Vertical Separation for Bicycles
- Parking and Auto Circulation Changes**
  - Parking Removal

**Bicycle and Pedestrian Crossing Improvements**

- Pedestrian/ Bicycle Crossing Beacon
- Traffic Signal Upgrades for Pedestrians
- Median/Pedestrian Refuge Island
- Median Modification
- Bulb-out
- New Pedestrian Crosswalk

**Project Bike Route Improvements**

- Existing or Proposed Bike Route per City Bike Plans

### San Pablo Ave and Washington Ave

NEW TRAFFIC SIGNAL TO BE CONSTRUCTED

BULB-OUT

SEPARATE BIKE SIGNAL PHASE TO REDUCE CONFLICTS WITH VEHICLES

Concept layout is preliminary and to be refined in coordination with City of Albany

PHASE SEQUENCE 1  
Major street movements

PHASE SEQUENCE 2  
Movements for both Washington Ave segments

PHASE SEQUENCE 3  
Bicycle/Vehicle protected left turn to Washington Ave

Washington Avenue Bicycle Gap Closure Concept

### San Pablo Ave between Brighton St and Clay St

TO BE IMPLEMENTED BY SEPARATE CITY OF ALBANY PROJECT

437 SAN PABLO AVE

505 SAN PABLO AVE

525 SAN PABLO AVE

518 SAN PABLO AVE

540 SAN PABLO AVE

600 SAN PABLO AVE

MEDIAN CONSTRUCTED WITH PEDESTRIAN REFUGE

TO BE IMPLEMENTED BY SEPARATE CITY OF ALBANY PROJECT

Concept layout is preliminary and to be refined in coordination with City of Albany

### San Pablo Ave and Solano Ave Intersection

TO BE IMPLEMENTED BY SEPARATE CITY OF ALBANY PROJECT

853A, 853B, & 853C SAN PABLO AVE

865 SAN PABLO AVE

901 SAN PABLO AVE

862 SAN PABLO AVE

902 & 904 SAN PABLO AVE

914A & 914B SAN PABLO AVE

BUS STOP AMENITIES TO BE DEVELOPED IN COORDINATION WITH AC TRANSIT ~2 PARKING SPACES REMOVED

U-TURNS RESTRICTED FROM SAN PABLO AVE

EXISTING MEDIAN REMOVED

BUS BULB

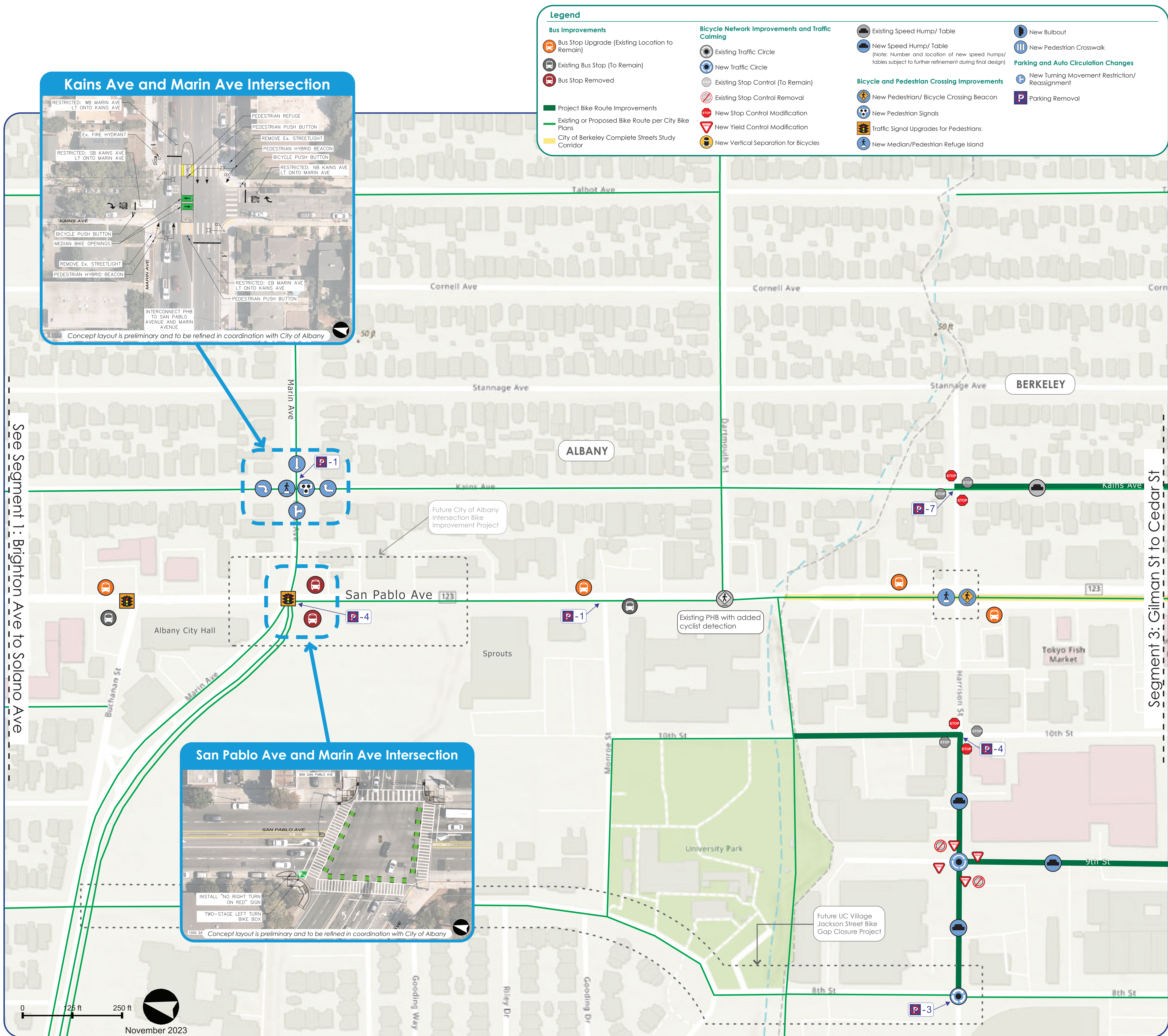
BUS STOP AMENITIES TO BE DEVELOPED IN COORDINATION WITH AC TRANSIT ~2 PARKING SPACES REMOVED

Concept layout is preliminary and to be refined in coordination with City of Albany



# San Pablo Ave Safety Enhancements and Parallel Bike Improvements

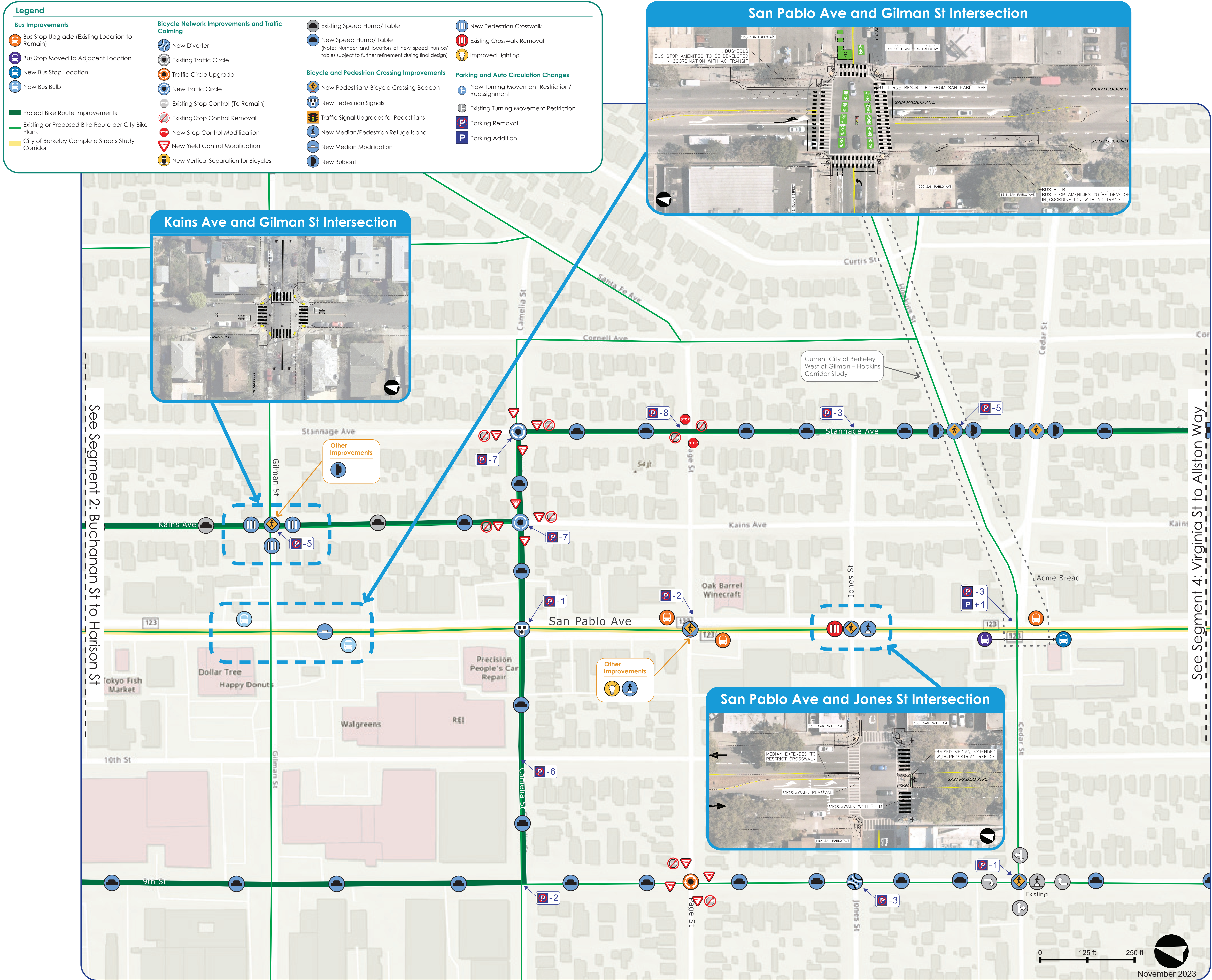
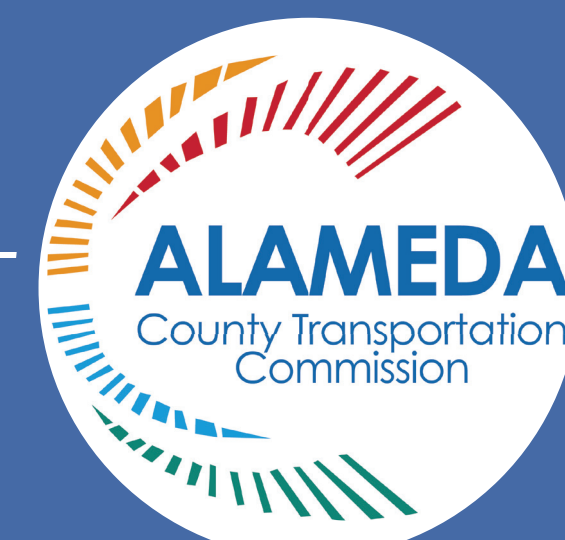
## Segment 2: Buchanan St to Harrison St





# San Pablo Ave Safety Enhancements and Parallel Bike Improvements

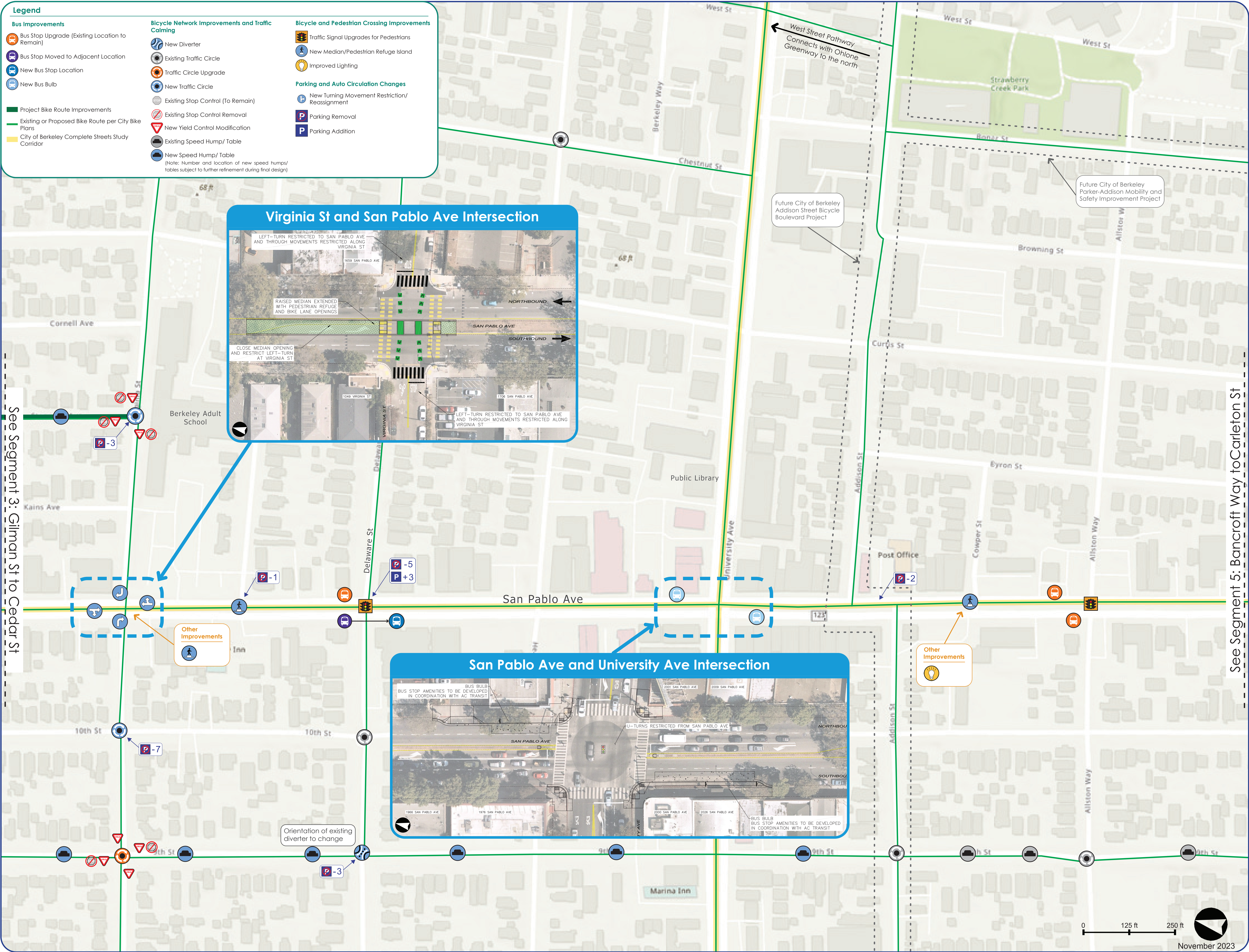
## Segment 3: Gilman St to Cedar St





# San Pablo Ave Safety Enhancements and Parallel Bike Improvements

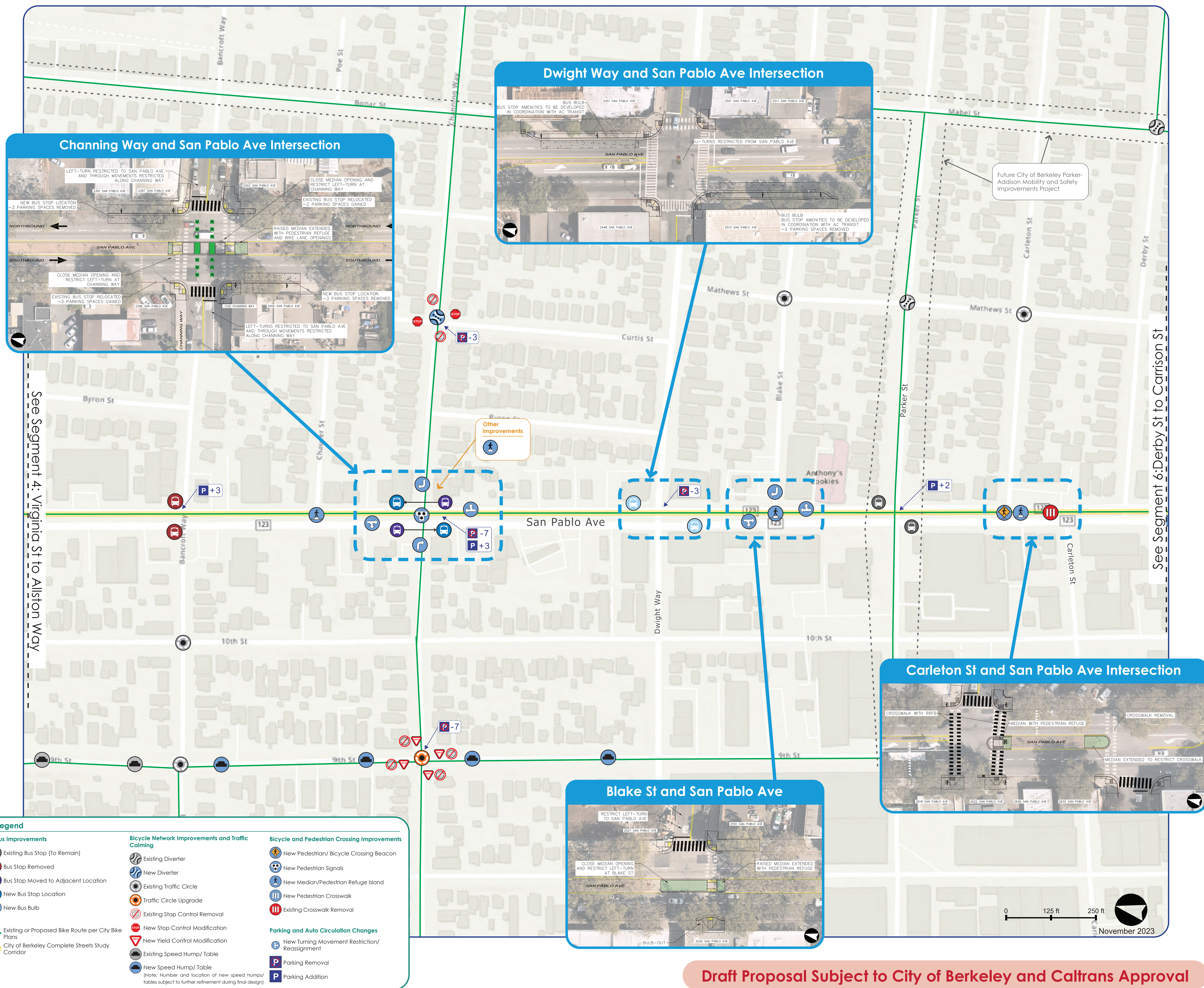
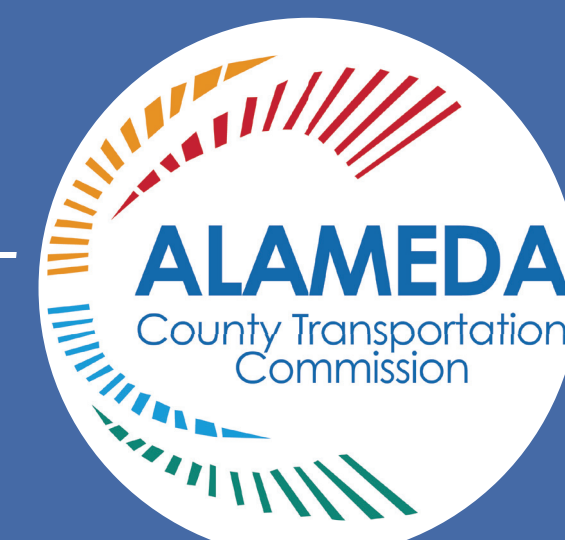
## Segment 4: Virginia St to Allston Way





# San Pablo Ave Safety Enhancements and Parallel Bike Improvements

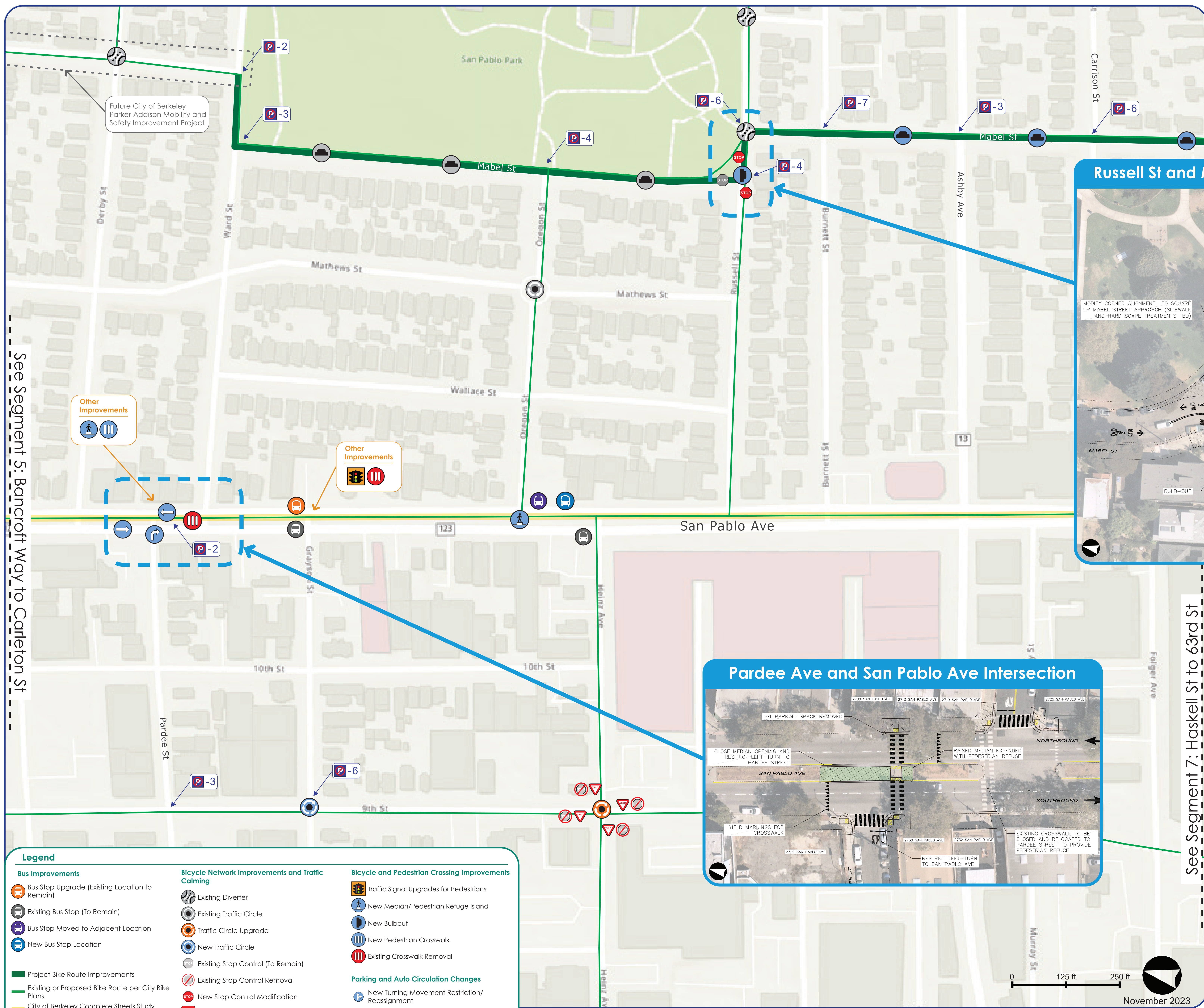
## Segment 5: Bancroft Way to Carleton St



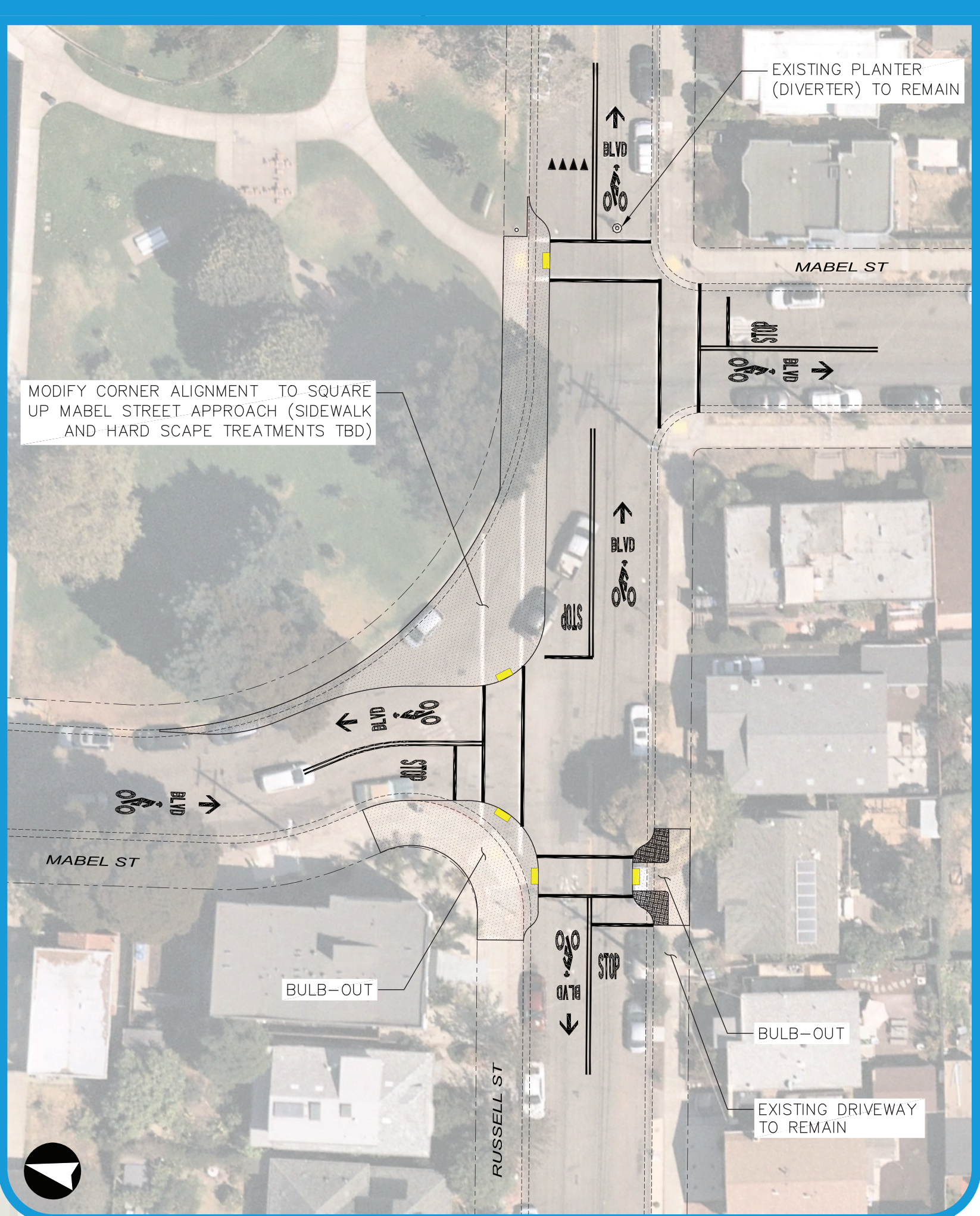


# San Pablo Ave Safety Enhancements and Parallel Bike Improvements

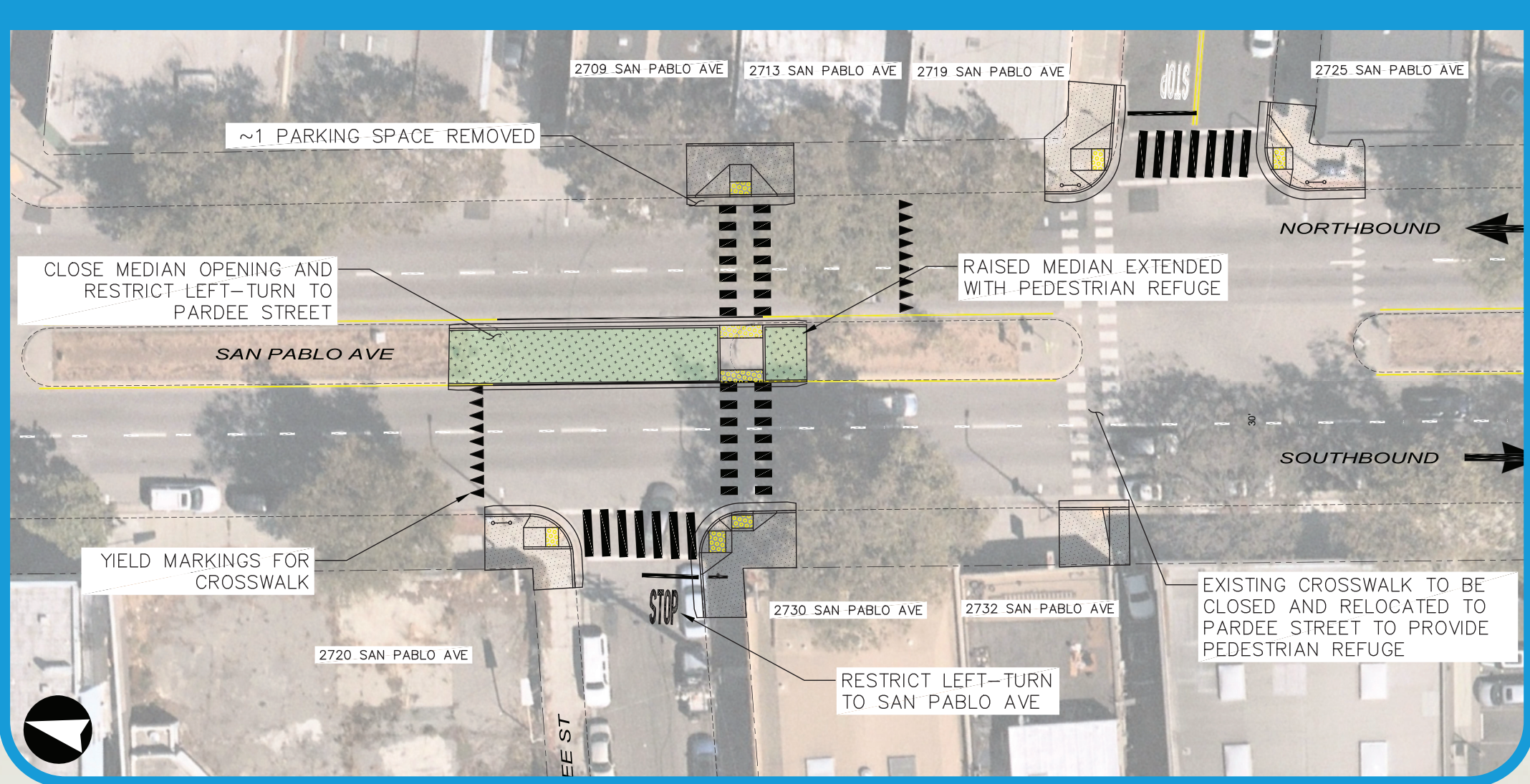
## Segment 6: Derby St to Carrison St



Russell St and Mabel St Intersection



Pardee Ave and San Pablo Ave Intersection



**Legend**

**Bus Improvements**

- Bus Stop Upgrade (Existing Location to Remain)
- Existing Bus Stop (To Remain)
- Bus Stop Moved to Adjacent Location
- New Bus Stop Location

**Bicycle Network Improvements and Traffic Calming**

- Existing Diverter
- Existing Traffic Circle
- Traffic Circle Upgrade
- New Traffic Circle
- Existing Stop Control (To Remain)
- Existing Stop Control Removal
- New Stop Control Modification
- New Yield Control Modification
- Existing Speed Hump/ Table
- New Speed Hump/ Table

**Bicycle and Pedestrian Crossing Improvements**

- Traffic Signal Upgrades for Pedestrians
- New Median/Pedestrian Refuge Island
- New Bulbout
- New Pedestrian Crosswalk
- Existing Crosswalk Removal

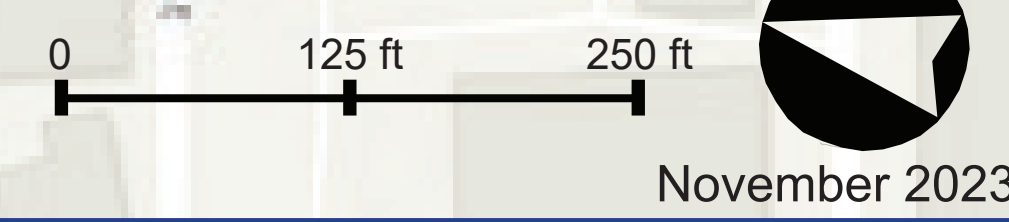
**Parking and Auto Circulation Changes**

- New Turning Movement Restriction/ Reassignment
- Parking Removal

Project Bike Route Improvements

- Existing or Proposed Bike Route per City Bike Plans
- City of Berkeley Complete Streets Study Corridor

(Note: Number and location of new speed humps/ tables subject to further refinement during final design)



Draft Proposal Subject to City of Berkeley and Caltrans Approval



# San Pablo Ave Safety Enhancements and Parallel Bike Improvements

## Segment 7: Haskell St to 63rd St

