



20th Annual Independent Watchdog Committee Report to the Public FY2020-21

Table of Contents

- Measure B and Measure BB Sales Tax Activities 1
- Summary of Expenditures . . . 1
- Financials At-a-Glance 2
- Independent Watchdog Committee Activities 6
- Measure B and Measure BB Funded Programs and Projects 8
- FY2020-21 IWC Findings . . . 12

The IWC concludes that 2000 Measure B and 2014 Measure BB tax dollars were spent in accordance with the intent of the two measures during FY2020-21, **except as noted in the findings and recommendations on page 12.**

Measure B and Measure BB Sales Tax Activities

In November 2000, Alameda County voters approved Measure B, which extended the County's 1986 half-cent transportation sales tax to 2022 and set forth a 20-year Expenditure Plan to enhance the County's transportation system. 2000 Measure B also established a Citizens Watchdog Committee (CWC) to review all Measure B expenditures for compliance with the Expenditure Plan.

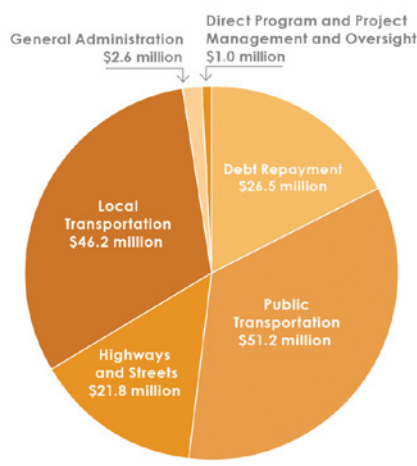
In November 2014, Alameda County voters approved Measure BB, which increased the County's half-cent transportation sales tax to one full cent, extended the tax through 2045 and set forth a 30-year Expenditure Plan for essential transportation improvements in every city throughout the County.

The 2014 Measure BB established an Independent Watchdog Committee (IWC) that reports its findings annually to the public to ensure appropriate use of sales tax funds and provides oversight by reviewing Measure B expenditures and Measure BB expenditures and performance measures. The IWC replaced and assumed responsibility for CWC activities in July 2015. The IWC does not opine on other funds the Alameda CTC manages and/or programs. This 20th annual report reviews expenditures and IWC activities during the fiscal year ended June 30, 2021 (FY2020-21).

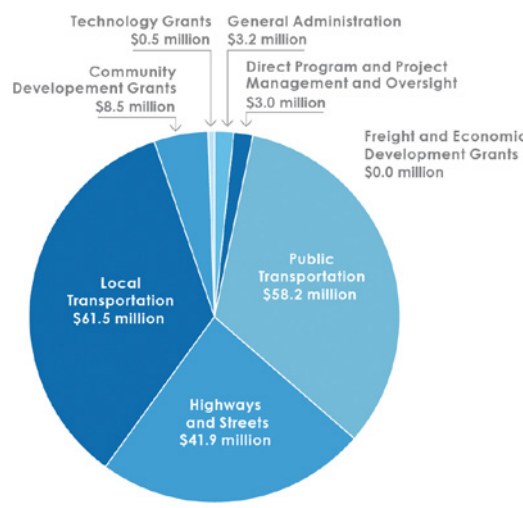
SUMMARY OF Revenues and Expenditures

The Alameda County Transportation Commission (Alameda CTC) is responsible for administering the Measure B and Measure BB transportation sales tax measures. In FY2020-21, Measure B revenues for Alameda CTC totaled \$170.5 million, and audited expenditures totaled \$149.3 million. Measure BB revenues totaled \$170.7 million, and audited expenditures totaled \$175.8 million in FY2020-21.¹

¹ Measure BB utilized sales tax funds received in prior years to pay for expenditures.



FY2020-21 Measure B Project and Program Expenditures



FY2020-21 Measure BB Project and Program Expenditures

Alameda CTC Financials At-a-Glance

The IWC reviews Alameda CTC 2000 Measure B and 2014 Measure BB expenditures,

which are primarily for transportation projects and programs. These include direct local distributions (DLDs) and discretionary grants to jurisdictions that fund four main programs: local streets and roads, mass transit, paratransit, and bicycle and pedestrian safety. These expenditures also include general administration, and all are subject to an independent audit.

The Alameda CTC Annual Comprehensive Financial Report ("Audited Financial Statements") for the year ended June 30, 2021 is available here:

alamedactc.org/ACFR

Measure B Expenditures

In FY2020-21, audited expenditures for Measure B programs, projects and administration totaled \$149.3 million. Alameda CTC expended \$22.1 million on capital projects, \$89.4 million on DLDs, \$26.5 million on debt repayment, \$7.7 million on discretionary grants, \$2.6 million on general administration and \$1.0 million on direct program and project management and oversight. The revenues available for projects and programs are allocated at a rate of approximately 60 percent to programs and 40 percent to capital projects. The revenues will be allocated over the life of the program to ultimately achieve the percentage split indicated in the Measure B Expenditure Plan (see note on page 3).

Alameda CTC issued \$137.1 million of Measure B Sales Tax Revenue Bonds in March 2014 to bridge a short-term funding gap that existed while many large capital projects in the Expenditure Plan were being completed. Repayment of the debt was deferred until March 2017, when the first principal payment was made. In FY2020-21 the bonds incurred \$26.5 million of costs (principal and interest) related to annual debt repayment for the fiscal year. The final debt service payment for the bonds was made in March 2022. Details related to the debt are in the official statement:

alamedactc.org/Bonds



Alameda CTC FY2020-21 Measure B Audited Expenditures

	(\$ in millions rounded)
Public Transit	\$51.2
Direct Local Distributions - Transit Service	\$33.7
Direct Local Distributions - Paratransit	14.3
Express Bus Grants	1.7
Paratransit Grants	1.2
Public Transit Capital Projects	0.3
Highways and Streets Capital Projects	21.8
Local Transportation	46.2
Direct Local Distributions - Local Streets and Roads	35.5
Direct Local Distributions - Bicycle and Pedestrian	5.9
Bicycle and Pedestrian Grants	3.8
Transit Center Development Grants	1.0
Local Transportation Capital Projects	-
General Administration	2.6
Direct Program and Project Management and Oversight	1.0
Debt Repayment	26.5
Total:	\$149.3

Measure BB Expenditures

In FY2020-21, audited expenditures for Measure BB programs, projects, and administration totaled \$175.8 million. Alameda CTC expended \$73.7 million on capital projects, \$86.9 million on DLDs, \$9.0 million on discretionary grants, \$3.2 million on general administration and \$3.0 million on direct program and project management and oversight. The revenues available for projects and programs are allocated at a rate of approximately 65 percent to programs and 35 percent to capital projects. The revenues will be allocated over the life of the program to ultimately achieve the percentage split indicated in the Measure BB Expenditure Plan (see note to right of table).

Alameda CTC FY2020-21 Measure BB Audited Expenditures

	(\$ in millions rounded)
Public Transit	\$58.2
Direct Local Distributions - Transit Service	\$35.0
Direct Local Distributions - Paratransit	14.6
Transit Operations, Maintenance, and Safety	0.2
Paratransit Grants	0.2
Public Transit Capital Projects	8.2
Highways and Streets Capital Projects	41.9
Local Transportation	61.5
Direct Local Distributions - Local Streets and Roads	32.4
Direct Local Distributions - Bicycle and Pedestrian	4.9
Bicycle and Pedestrian Grants	0.6
Local Transportation Capital Projects	23.6
Freight and Economic Development Grants	-
Community Development Grants	8.5
Technology Grants	(0.5)
General Administration	3.2
Direct Program and Project Management and Oversight	3.0
Total:	\$175.8



Note on tables on pages 2-3: In accordance with the 2000 Measure B Expenditure Plan and 2014 Measure BB Expenditure Plan, Alameda CTC allocates funds for specific capital projects, such as highway improvements or transit projects, and other transportation grants (paid on a reimbursement basis), and distributes funds for local streets and roads maintenance, mass transit, paratransit, and bicycle and pedestrian safety programs on a monthly, formula basis to the cities, the County and transit operators. Refer to note 2 on page 8 for the program allocation percentage split.



Measure B and Measure BB DLD recipients are required to provide audited financial statements and compliance reports to document revenues received (including interest) and expenditures incurred each fiscal year.

FY2020-21 Measure B Direct Local Distributions (DLDs) for All Programs

Program compliance reports submitted by Measure B DLD fund recipients reported \$70.2 million in expenditures during FY2020-21. (See table below for details by recipient.) For more information about DLD Program expenditures and fund balances, see: alamedactc.org/DLD-Program-Compliance

Agency/Jurisdiction ¹	Bike/Ped	Local Streets	Transit	Paratransit	Total Measure B
AC Transit	\$0	\$0	\$26,002,549	\$6,226,174	\$32,228,723
BART	\$0	\$0	\$0	\$2,365,794	\$2,365,794
LAVTA	\$0	\$0	\$1,095,569	\$201,950	\$1,297,518
WETA	\$0	\$0	\$22,882	\$0	\$22,882
ACE	\$0	\$0	\$1,908,565	\$0	\$1,908,565
ACPWA	\$206,676	\$1,584,750	\$0	\$0	\$1,791,426
City of Alameda	\$295,446	\$249,965	\$0	\$203,670	\$749,081
City of Albany	\$60,000	\$691,917	\$0	\$29,712	\$781,629
City of Berkeley	\$342,989	\$2,357,358	\$0	\$527,280	\$3,227,627
City of Dublin ²	\$234,080	\$63,398	\$0	\$0	\$297,478
City of Emeryville	\$935	\$601,784	\$0	\$27,751	\$630,470
City of Fremont	\$630,497	\$1,898,620	\$0	\$498,936	\$3,028,053
City of Hayward	\$78,399	\$3,418,713	\$0	\$1,004,120	\$4,501,232
City of Livermore ²	\$896,145	\$621,848	\$0	\$0	\$1,517,993
City of Newark	\$2,500	\$44,000	\$0	\$225,292	\$271,792
City of Oakland	\$737,501	\$9,876,862	\$0	\$850,107	\$11,464,470
City of Piedmont ²	\$31,237	\$174,485	\$0	\$0	\$205,722
City of Pleasanton	\$72,681	\$749,743	\$0	\$131,485	\$953,909
City of San Leandro	\$699,811	\$656,493	\$0	\$413,344	\$1,769,648
City of Union City ³	\$37,476	\$175,583	\$539,846	\$399,476	\$1,152,380
Total	\$4,326,373	\$23,165,519	\$29,569,411	\$13,105,090	\$70,166,393

¹ This table reflects total Measure B funds reported by agency/jurisdiction. Revenue and expenditure figures may vary due to rounding.

² These communities receive paratransit services through an adjoining jurisdiction.

³ Audited financial statements for the City of Union City are pending.



FY2020-21 Measure BB Direct Local Distributions (DLDs) for All Programs

Measure BB DLD fund recipients reported \$66.7 million in expenditures during FY2020-21. (See table below for details by recipient.) For more information about DLD Program expenditures and fund balances, see:

alamedactc.org/DLD-Program-Compliance

Agency/Jurisdiction ¹	Bike/Ped	Local Streets	Transit	Paratransit	Total Expenditures
AC Transit	\$0	\$0	\$28,886,697	\$6,914,369	\$35,801,066
BART	\$0	\$0	\$811,210	\$2,433,631	\$3,244,841
LAVTA	\$0	\$0	\$811,210	\$397,087	\$1,208,297
WETA	\$0	\$0	\$649,588	\$0	\$649,588
ACE	\$0	\$0	\$1,598,168	\$0	\$1,598,168
ACPWA	\$579	\$1,043,815	\$0	\$0	\$1,044,394
City of Alameda	\$214,411	\$316,136	\$0	\$130,905	\$661,452
City of Albany	\$0	\$632,112	\$0	\$5,414	\$637,526
City of Berkeley	\$1,042,941	\$244,436	\$0	\$49,274	\$1,336,651
City of Dublin ²	\$205,679	\$692,411	\$0	\$0	\$898,090
City of Emeryville	\$13,395	\$321,359	\$0	\$6,383	\$341,137
City of Fremont	\$1,629,622	\$2,967,294	\$0	\$704,070	\$5,300,986
City of Hayward	\$35,863	\$358,868	\$0	\$156,546	\$551,277
City of Livermore ²	\$604,994	\$557,542	\$0	\$0	\$1,162,536
City of Newark	\$57,910	\$0	\$0	\$0	\$57,910
City of Oakland	\$921,633	\$7,292,828	\$0	\$1,260,042	\$9,474,503
City of Piedmont ²	\$0	\$5,011	\$0	\$0	\$5,011
City of Pleasanton	\$54,855	\$730,000	\$0	\$194,923	\$979,778
City of San Leandro	\$333,911	\$414,965	\$0	\$214,868	\$963,744
City of Union City ³	\$79,515	\$42,500	\$405,605	\$247,803	\$775,423
Total	\$5,195,308	\$15,619,277	\$33,162,478	\$12,715,314	\$66,692,378

¹ This table reflects total Measure B funds reported by agency/jurisdiction. Revenue and expenditure figures may vary due to rounding.

² These communities receive paratransit services through an adjoining jurisdiction.

³ Audited financial statements for the City of Union City are pending.

Performance Measures for DLD Recipients' Projects and Programs

On an annual basis, Measure B and Measure BB recipients are required to document expenditures and include a description of the accomplishments made with the DLD investment. Recipients also are required to report how specific performance measures were met. According to the Measure BB expenditure plan, "... the Independent Watchdog Committee will

review the performance and benefit of projects and programs based on performance criteria established by Alameda CTC." The IWC began monitoring Measure BB performance measures during its review of FY2016-17 DLD expenditures and will continue to make recommendations to the Commission for future years. See page 12.

Independent Watchdog Committee Activities

The Independent Watchdog Committee (IWC) reports directly to the public and provides oversight

by reviewing Alameda CTC Measure B expenditures and Measure BB expenditures and performance measures. The IWC meets at least four times a year as a full committee and convenes subcommittees as needed. IWC members are Alameda County residents who are not elected officials at any level of government, nor individuals in a position to benefit personally in any way from the sales tax. IWC members performed the following activities from July 1, 2020 through June 30, 2021.

- **Ongoing Programs and Capital Projects Monitoring:** The IWC monitors specific programs, capital projects and issues of concern.
- **Review of Independent Audit of Alameda CTC:** The IWC reviews the independent auditor's plan for the audit before it begins and reviews the draft audited Annual Comprehensive Financial Report regarding Measure B and Measure BB revenues and expenditures.

- **Audit and Compliance Report**

Review: The IWC members review audited financial statements and compliance reports, including performance measures, received from Measure B and Measure BB direct local distribution (DLD) recipients to ensure expenditures comply with the requirements in the applicable Expenditure Plan. DLD recipients' audited financial statements and compliance reports are available at alamedactc.org/reporting-grant-forms.

- **Issues Identification Process:**

IWC members may request and receive information from DLD recipients and/or Alameda CTC staff if they have concerns regarding Measure B and Measure BB expenditures. The Committee may also review issues regarding Measure B and Measure BB expenditures identified by the public.

July 2020 Long-Range Surface Transportation Planning in Alameda County:

An IWC member submitted an issues identification form regarding long-term planning for transportation projects throughout Alameda County for all jurisdictions. The Committee directed the member

to contact project sponsors for the information. A motion was approved stating that the request was outside the IWC's jurisdiction.

- **Annual Report to the Public:**

Each year, the IWC establishes a subcommittee to develop the annual report to the public regarding Measure B and Measure BB expenditures and to discuss distribution and outreach for the annual report (see timeline below).



IWC Annual Report to the Public Timeline:



IWC Members



Patrishia Piras "Watch Dog"
CHAIR
 Sierra Club



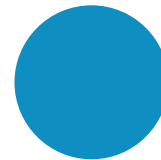
Murphy McCalley ♦
VICE CHAIR
 Supervisor Nate Miley, District 4



Keith Brown
 Alameda Labor Council,
 AFL-CIO



Curtis Buckley
 Bike East Bay



Oscar Dominguez
 East Bay Economic
 Development Alliance



Alfred Exner*
 Alameda County
 Mayors' Conference,
 District 4



Herb Hastings*
 Paratransit Advisory and
 Planning Committee



Ed Hernandez *♦
 Alameda County
 Mayors' Conference,
 District 3



Steven Jones ♦
 Alameda County Mayors'
 Conference, District 1



Lenore McDonald +
 League of Women Voters



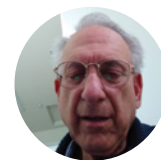
Glenn Naté
 Supervisor Richard
 Valle, District 2



Thomas Rubin
 Alameda County
 Taxpayers Association



Karina Ryan ♦
 League of
 Women Voters



Carl Tilchen
 Alameda County Former
 Supervisor Scott Haggerty,
 District 1



Esther Waltz ♦
 Paratransit Advisory and
 Planning Committee



Hale Zukas
 Supervisor Keith
 Carson, District 5



**Alameda County Supervisor
 Wilma Chan, District 3**

The IWC acknowledges the unfortunate death of Supervisor Wilma Chan on November 3, 2021, while walking her dog Maggie.

♦ Members who resigned during or after the reporting period.
 * Members who joined the committee during this reporting period.
 + Members who joined the committee after the reporting period.

APR / MAY

IWC Annual Report
 Subcommittee Meets to
 Develop Annual Report

JUN

Summary of
 Compliance Reports
 and Findings
 Released

JUL

IWC Annual Report
 Public Hearing and
 Approval

AUG

IWC Annual Report
 Published and
 Available to the Public

Measure B and Measure BB Funded Programs

In FY2020-21, Alameda CTC expended \$97.1 million in Measure B funds and \$95.9 million in Measure BB funds on programs as defined below.

Local Streets and Roads: All cities and the County receive allocations for local transportation improvements, including street maintenance and repairs. Jurisdictions use these flexible Measure B and Measure BB funds to meet their locally determined transportation priorities.

- Payments to jurisdictions:
Total Measure B: \$35.5 million
Total Measure BB: \$32.4 million

Mass Transit: Transit systems ACE, AC Transit, BART, LAVTA, Union City Transit and WETA receive allocations for operations and/or maintenance.¹

- Payments to local transit operators:
Measure B - \$33.7 million

Measure BB - \$35.0 million

- Grants: Measure B - \$1.7 million
Measure BB - \$0.2 million

Total Measure B: \$35.4 million

Total Measure BB: \$35.2 million

Special Transportation for Seniors and People with Disabilities:

Funds are allocated to support paratransit under the Americans with Disabilities Act (ADA) and other transportation programs for older adults and people with disabilities.

- Payments to local jurisdictions:
Measure B - \$14.3 million
Measure BB - \$14.6 million

- Grants: Measure B - \$1.2 million
Measure BB - \$0.2 million

Total Measure B: \$15.5 million

Total Measure BB: \$14.8 million

Bicycle and Pedestrian Safety Funds:

All cities and the County receive these funds for bicycle and pedestrian plans, programs and capital projects.

- Payments to local jurisdictions:
Measure B - \$5.9 million
Measure BB - \$4.9 million

- Grants: Measure B - \$3.8 million
Measure BB - \$0.6 million

Total Measure B: \$9.7 million

Total Measure BB: \$5.5 million

Other Grants:

Funds are allocated for freight and economic development, community development and technology projects.

Total Measure B: \$1.0 million

Total Measure BB: \$8.0 million

Transportation Programs and Projects

The transportation programs and projects that Measure B and Measure BB fund are intended to expand access and improve mobility to foster a vibrant and livable environment for people in Alameda County.

Programs: Alameda CTC allocates approximately 60 percent of Measure B and 65 percent of Measure BB funds on a monthly basis by formula² to local jurisdictions and transit operators for ongoing maintenance, operations and small infrastructure or capital projects, and through competitive grants paid on a reimbursement basis.

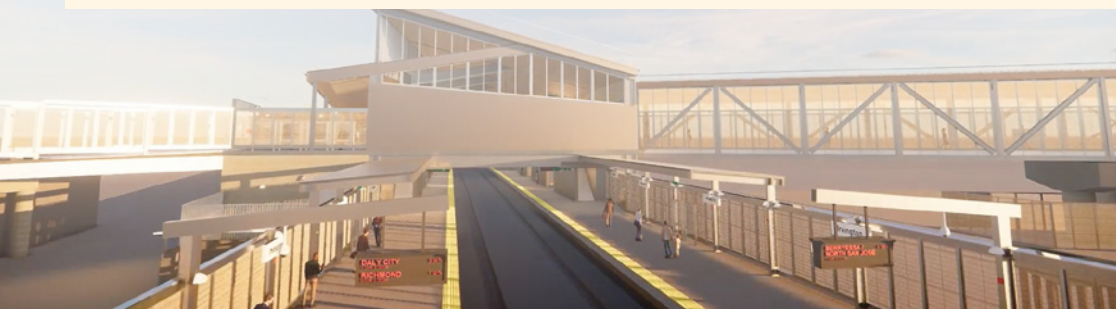
Projects: Alameda CTC allocates approximately 40 percent of Measure B and 35 percent of Measure BB funds to specific capital projects (see pages 9-11).

¹ Transit operators include Alameda-Contra Costa Transit District (AC Transit), Altamont Corridor Express (ACE), Livermore Amador Valley Transit Authority (LAVTA), Union City Transit, San Francisco Bay Area Rapid Transit District (BART) and San Francisco Bay Area Water Emergency Transportation Authority (WETA).

² The 2000 Measure B Expenditure Plan specifies the following program allocations: local streets and roads (22.34%), mass transit (21.92%), special transportation for seniors and people with disabilities (10.45%), bicycle and pedestrian safety (5.00%) and transit center development (0.19%).

The 2014 Measure BB Expenditure Plan specifies the following program allocations: local streets and roads (20.00%), mass transit (23.81%), special transportation for seniors and people with disabilities (10.01%), bicycle and pedestrian safety (5.02%), affordable student transit pass (0.19%), community development investments (4.00%), freight and economic development (1.00%) and technology, innovation and development (1.00%).

See the FY2020-21 Program Compliance Summary Report for data on expenditures by Measure B and Measure BB fund recipients: alamedactc.org/Reports



Measure B and Measure BB Funded Projects

In FY2020-21, Alameda CTC expended \$23.8 million of 2000 Measure B funds and \$76.9 million of 2014 Measure BB funds on capital projects for transportation infrastructure improvements, such as modernizing and improving the BART system, express lanes, highway and transit improvements, local street and road enhancements, intermodal projects and other local projects.

In addition to the voter-approved 2000 Measure B capital projects, Alameda CTC added several projects approved by the Commission pursuant to the Expenditure Plan: the Vasco Road Safety Improvement Project from the Measure B Congestion Relief Emergency Fund in 2003, the I-80 Integrated Corridor Management Project in 2008, the I-880/23rd and

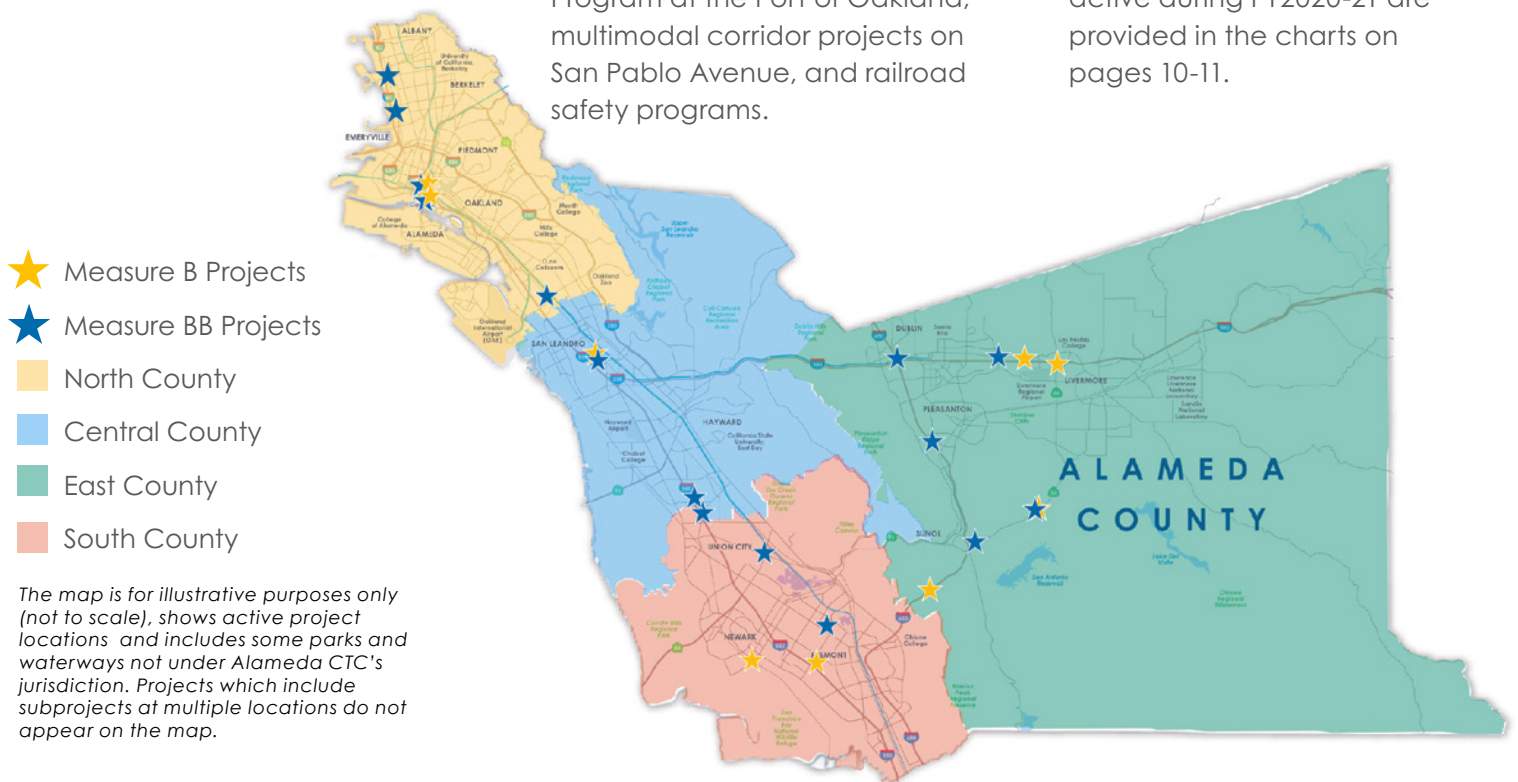
29th Avenues Interchanges and the Countywide Transportation Plan/Transportation Expenditure Plan in 2010, and the Studies for Congested Segments/Locations on the Congestion Management Program Network in 2011.

The 2014 Measure BB Expenditure Plan includes a combination of specifically named capital projects and discretionary programs. The named capital projects are primarily large-scale infrastructure improvements to freeway corridors, interchanges, the BART system, and transit corridors. The discretionary programs fund a diverse pool of projects that vary by type, size, and locations. Examples of large-scale capital improvements funded by the discretionary programs include the GoPort Program at the Port of Oakland, multimodal corridor projects on San Pablo Avenue, and railroad safety programs.

The map below highlights the location of Measure B and Measure BB capital projects that were active during FY2020-21, except those projects that contain subprojects at various locations or those projects that have not completed sufficient engineering studies to determine clear project location (see charts on pages 10-11).

FY2020-21 Active Projects (Project status as of July 2020)

Alameda CTC's capital projects include 11 active 2000 Measure B and 28 active 2014 Measure BB capital and discretionary programs in FY2020-21. **100 percent of the programmed funding for Measure B capital projects has been allocated.** Project funding commitments and project expenditures for capital projects active during FY2020-21 are provided in the charts on pages 10-11.



The map is for illustrative purposes only (not to scale), shows active project locations and includes some parks and waterways not under Alameda CTC's jurisdiction. Projects which include subprojects at multiple locations do not appear on the map.

FY2020-21 Measure B Active Projects

Implementing Agency	Current Phase ¹	2000 Measure B Project Name	Planning Area ²	2000 Measure B Commitment/Allocated (\$ million)	FY20-21 Measure B Expenditures (\$ million)	Project Completion Date/Anticipated Completion Date
Caltrans/Livermore	Project Closeout	Isabel Avenue - Route 84/I-580 Interchange	E	26.5	0.0	12/31/22
BART	Project Closeout	BART Warm Springs Extension	S	224.4	0.0	12/31/22
San Leandro	Design	East 14th St/Hesperian Blvd/150th Street Intersection Improvement	C	3.2	0.0	6/30/24
SJRRCA/Alameda CTC	Various	Altamont Commuter Express Rail ^{3, 4}	S/E	13.2	0.2	12/31/23
Oakland	Various	Downtown Oakland Streetscape Improvement	N	6.4	0.0	12/31/23
Caltrans/Alameda CTC	Various	I-680 Sunol Express Lanes Improvements ^{5, 6}	S/E	155.2	21.0	12/31/27 ⁷
Multiple	Various	Emerging Projects (Congestion Relief Emergency Fund) ^{3, 4}	N/E	10.3	0.0	12/31/23
Caltrans/Alameda CTC	Various	Route 84 Expressway ⁵	E	96.5	0.6	12/31/26 ⁷
Newark	Various	Dumbarton Corridor Improvements (Central Avenue Overpass)	S	19.4	0.0	12/31/25
Alameda CTC	N/A	I-880/Broadway-Jackson Interchange Improvements (Study Only) ⁶	N	8.1	0.1	6/30/22
BART/Alameda CTC	N/A	I-580 Corridor/BART to Livermore Studies	E	41.8	0.2	12/31/22

Measure B Notes:

¹ Project phase is as of April 2021. The Project Closeout phase indicates construction is complete, and the project financial closeout is underway.

² Project Planning Areas include C = Central County, E = East County, N = North County, S = South County.

³ Includes projects at multiple locations.

⁴ Not shown on the map on page 9.

⁵ Exchange and/or loan of MB approved for project.

⁶ Project fact sheets are available on the Alameda CTC website: alamedactc.org/Programs-Projects

⁷ Includes landscape plant establishment period.

⁸ The final debt service payment for the Measure B Sales Tax Revenue Bonds was made in March 2022.



FY2020-21 Measure BB Active Projects

ID	Implementing Agency	Program	2014 Measure BB Project/Discretionary Program Name	Planning Area ¹	Total Measure BB Commitment (\$ million)	Total Amount Allocated To Date (\$ million)	FY20-21 Measure BB Expenditures (\$ million)
13	AC Transit	Capital	Telegraph Ave/East 14th/International Blvd Project ⁴	N/C	10.0	10.0	0.2
14	Alameda	Capital	Alameda to Fruitvale BART Rapid Bus ⁴	N	9.0	1.4	0.0
15	AC Transit	Capital	Grand/MacArthur BRT ⁴	N	6.0	0.1	0.0
16	AC Transit	Capital	College/Broadway Corridor Transit Priority ⁴	N	10.0	0.1	0.0
17	BART/Fremont	Capital	Irvington BART Station	S	120.0	19.2	5.7
18	BART	Capital	Bay Fair Connector/BART METRO	C	100.0	5.6	0.0
19	BART	Capital	BART Station Modernization and Capacity Program ^{1,4}	VAR	90.0	10.0	2.2
20	TVSJVRRRA	Capital	Valley Link	E	400.0	0.0	0.0
21	Multiple	Discretionary	Dumbarton Corridor Area Transportation Improvements ⁴	S	120.0	10.0	2.7
22	Union City	Capital	Union City Intermodal Station	S	75.0	0.1	0.0
23	Multiple	Discretionary	Railroad Corridor Right of Way Preservation and Track Improvements ⁴	VAR	110.0	0.0	0.0
24	Oakland	Capital	Oakland Broadway Corridor Transit	N	10.0	4.1	0.7
25	CCJPA	Capital	Capitol Corridor Service Expansion ⁴	VAR	40.0	0.0	0.0
26	Multiple	Discretionary	Congestion Relief, Local Bridge Seismic Safety ⁴	VAR	639.0	178.2	9.1
27	Multiple	Discretionary	Countywide Freight Corridors ⁴	VAR	161.0	116.5	12.8
29	Caltrans/ Alameda CTC	Capital	I-80 Gilman Street Interchange Improvements ^{3,5}	N	24.0	12.0	3.7
30	Alameda CTC	Capital	I-80 Ashby Interchange Improvements ⁵	N	52.0	9.6	1.6
31	Caltrans/ Alameda CTC	Capital	SR-84/I-680 Interchange and SR-84 Widening ⁵	E	122.0	122.0	14.7
32	Caltrans/ Alameda CTC	Capital	SR-84 Expressway Widening (Pigeon Pass to Jack London) ⁵	E	10.0	10.0	0.0
33	Alameda CTC	Capital	I-580/I-680 Interchange Improvements	E	20.0	0.0	0.0
34	Multiple	Capital	I-580 Local Interchange Improvement Program ⁴	E	28.0	1.4	0.0
35	Caltrans/ Alameda CTC	Capital	I-680 HOT/HOV Lane from SR-237 to Alcosta	S/E	60.0	60.0	12.0
36	Alameda CTC	Capital	I-880 NB HOV/HOT Extension from A Street to Hegenberger	C	20.0	0.0	0.0
37	Multiple	Capital	I-880 Broadway/Jackson Multimodal Transportation and Circulation Improvements ⁵	N	75.0	5.0	1.4
38	Caltrans/ Alameda CTC	Capital	I-880 Whipple Road/Industrial Parkway Southwest Interchange Improvements ⁵	C	60.0	5.7	0.2
39	Caltrans/ Alameda CTC	Capital	I-880 Industrial Parkway Interchange Improvements ⁵	C	44.0	5.6	0.2
40	Multiple	Capital	I-880 Local Access and Safety Improvements ⁴	VAR	85.0	32.3	2.1
42	Multiple	Discretionary	Gap Closure on Three Major Trails ⁴	VAR	264.0	20.1	4.0

Measure BB Notes: ¹ Project Planning Areas include C = Central County, E = East County, N = North County, S = South County.

² The funding status is as of March 2022.

³ Exchange of Measure BB funds approved for project.

⁴ Not shown on the map on page 9.

⁵ Additional project information is available on the Alameda CTC website: alamedactc.org/Programs-Projects



Independent Watchdog Committee Findings

FY2020-21 For this 20th Annual Report to the Public, the Independent Watchdog Committee (IWC) acknowledges that Alameda County taxpayer funds from Measures B and BB have achieved significant improvements in local and countywide transportation programs and projects, but that some desired performance goals and outcomes remain short of expectations.

In 2016, Alameda CTC adopted a series of performance measures in four categories (transit operations, paratransit, local streets and roads, and bicycle/pedestrian) for the formula funds available to DLD recipients – the cities, County, and transit operators – and entered into 10-year agreements for availability and use of these funds. The IWC has sought to provide input to Alameda CTC on performance measures, but without much satisfaction. Given the limited performance measures which have been adopted by the Commission, the IWC finds it difficult to offer an opinion to the Public as to the overall effectiveness of the DLD program expenditures.

The IWC diligently presents its observations, findings, and recommendations to the public and to the Commission in these Annual Reports. See alamedactc.org/Reports. The IWC respectfully urges that Alameda CTC formally respond, during a regular public meeting, to these issues and recommendations.

The IWC is fully cognizant that the people who live and/or work in Alameda County were enormously affected by the COVID-19 pandemic throughout FY2020-21. Nevertheless, many undesirable trends that had begun before that year have not been adequately turned around or addressed. There is no substantive sanctioning for not meeting the

adopted performance measures. The IWC notes that two cities have failed for the past four successive years to achieve the adopted goal for Pavement Condition Index, and two additional cities have missed the target for three of the past four years. Alameda County road users have borne the brunt of these deficiencies.

The City of Union City suffered a city-wide cyber-attack during FY2019-20, which delayed submittal of their financial statements for both that year and FY2020-21. The City's IT system is recovering, and they have indicated that they will submit FY2020-21 reports for a compliance determination "by early summer" 2022. As of the writing of this Report, that has not occurred.

The IWC acknowledges the unfortunate death of Supervisor Wilma Chan on November 3, 2021, while walking her dog Maggie. Our Committee extends heartfelt condolences to Supervisor Chan's family. But we also need to ask – Why does Alameda CTC not have a Vision Zero policy or performance measure for pedestrian and cyclist safety? Such a document would be a fitting tribute to the memory of the late Supervisor Chan.

On a more affirmative note, the IWC also notes the recent resignations of members Murphy McCalley and Ed Hernandez who have been appointed to fill vacancies in local elected offices – the AC Transit Board of Directors and the Eden Township Healthcare District, respectively. Their service to the people of Alameda County has been greatly appreciated, as will their continuing roles.

The IWC encourages members of the Public to contact us directly at IndependentWatchdog@alamedactc.org.



How to Get Involved

All Alameda CTC advisory committee meetings, including Independent Watchdog Committee meetings are open to the public. Chinese and Spanish interpreters and sign language interpretation services are available upon request. Please contact Alameda CTC at 510.208.7400 or contact@alamedactc.org to schedule an interpreter at least 5 days prior to the meeting you wish to attend, or if you are interested in vacancies on Alameda CTC's Bicycle and Pedestrian Advisory Committee (BPAC) and/or Paratransit Advisory and Planning Committee (PAPCO).

Additional Information

Additional information is available at www.AlamedaCTC.org or at Alameda CTC's offices at 1111 Broadway, Suite 800, Oakland, CA, 94607, including the 2000 Measure B Expenditure Plan, the 2014 Measure BB Expenditure Plan, this annual report, agency compliance audits and reports, and Annual Financial Reports. Contact your local jurisdiction for information on Measure B or Measure BB funded projects and programs or visit alamedactc.org/Partners.