

ALAMEDA COUNTY TRANSPORTATION COMMISSION



# Bikeways Academy

## GETTING TO YES: PHASED DELIVERY STRATEGIES

Panel Discussion  
and White Paper Kick-off

# About the Bikeways Academy

- Quarterly Technical Trainings
- Aimed at Local Jurisdictions and Agency Staff
- Support the Countywide Bikeways Network and All Ages and Abilities Policy
- All resources will be added to the new [website resource](#)

The screenshot shows the Alameda County Transportation Commission website. The header includes the logo, navigation links for Meetings and Contracting, a search bar, and language selection options. The main navigation menu includes About Us, Planning, Funding, Projects and Programs, Get Involved, and News and Publications. The main content area features a large banner for 'ALL AGES AND ABILITIES BIKEWAYS' with a circular diagram showing various transportation modes. Below the banner, there is a section titled 'ALL AGES AND ABILITIES BIKEWAYS' with a sub-heading 'Countywide Bikeways Facilities should incorporate All Ages and Abilities (AAA) design principles defined in the National Association of City Transportation Officials (NACTO) Contextual Guidance for Selecting All Ages and Abilities Bikeways.' This section includes a bulleted list of design principles and a reference to a forthcoming white paper. To the right, there is a thumbnail for a document titled 'Designing for All Ages & Abilities: Contextual Guidance for High-Comfort Bicycle Facilities' by NACTO, dated December 2017.

# Agenda

- White Paper Kickoff
- Presentations Followed by Panel Discussion
- Open Q and A



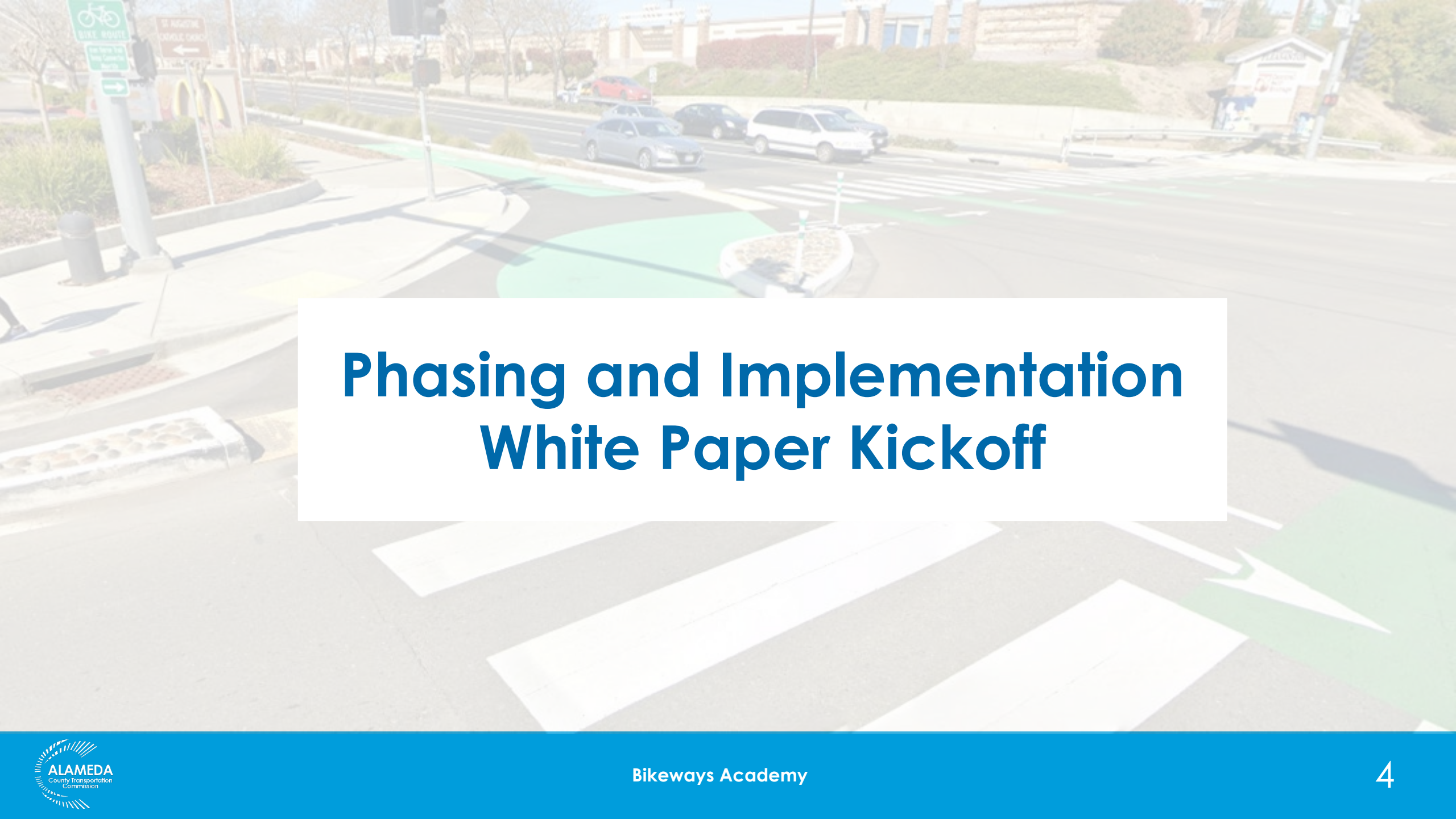
Sheila Marquises  
City of San Leandro, CA



Andreas Wolfe  
City of Cambridge, MA



Andrew Sullivan  
City of Portland, OR



# Phasing and Implementation White Paper Kickoff

# All Ages and Abilities Bikeway Implementation Can be Challenging.

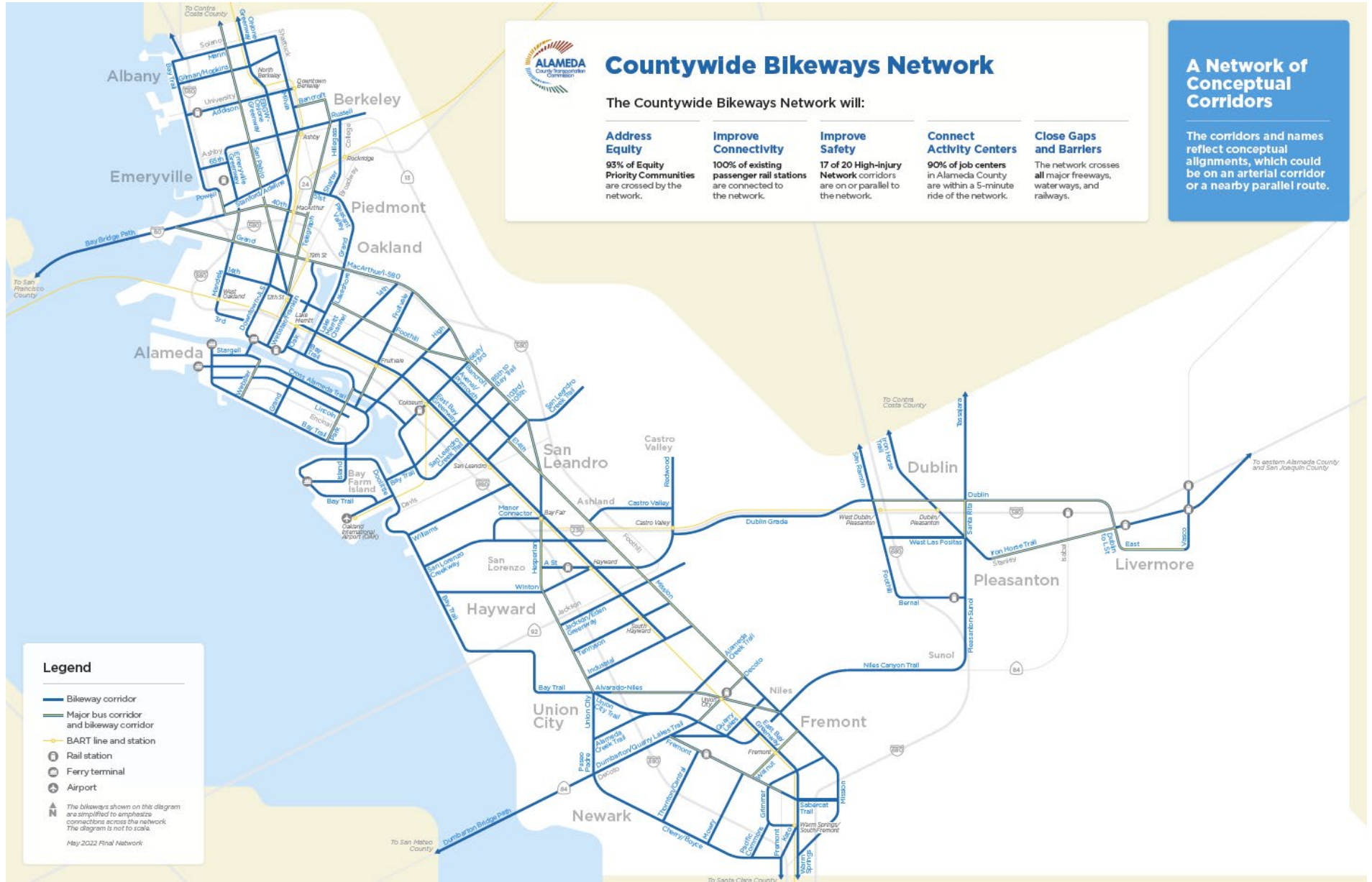


# Countywide Bikeway Network

(Approved May 2022)

Mapping for illustrative purposes only

Corridors and names represent conceptual alignments, not specific routes.



# Why Use a Phased Approach?



Opportunistically build a network segment with mix of near- and long-term designs



Address safety and connectivity needs while holding space for a complete network long-term



Pro-actively plan future phases for durability over time

# Phasing and Implementation White Paper Resource



Planning road map to overcome common barriers to All Ages and Abilities bikeway implementation



Toolbox of locally-tested materials for advancing durable, high-quality phased projects



Case study spotlights on local and national projects using phasing strategies to build out AAA networks



# White Paper Schedule & Next Steps



An aerial photograph of a city street featuring a prominent green-painted bike lane. The street is lined with mature trees and buildings, with a body of water visible in the upper portion of the image. A white rectangular box is overlaid on the center of the image, containing the text 'Panel Discussion'.

# Panel Discussion

# Today's Speakers



Sheila Marquises  
Engineering & Transportation  
Director,  
City of San Leandro, CA



Andreas Wolfe  
Street Design  
Project Manager,  
City of Cambridge, MA

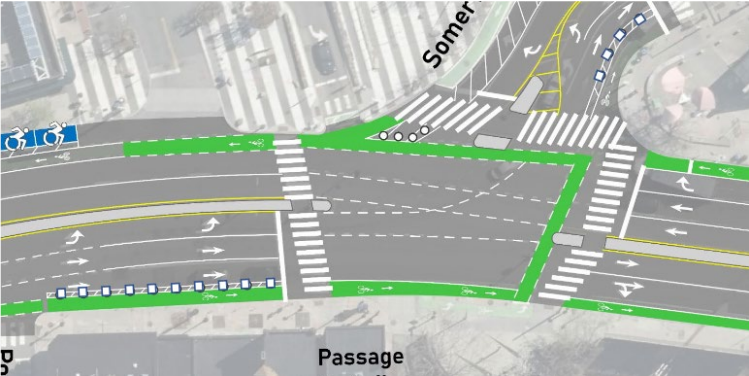


Andrew Sullivan  
Traffic Engineering,  
Portland Bureau of  
Transportation (PBOT)

# Case Studies



Crosstown Corridors  
San Leandro, CA



Massachusetts Avenue  
Cambridge, MA



Naito Parkway  
Portland, OR