

East Bay Greenway Multimodal Project

E. 14th St/Mission Blvd. Project



PROJECT OVERVIEW

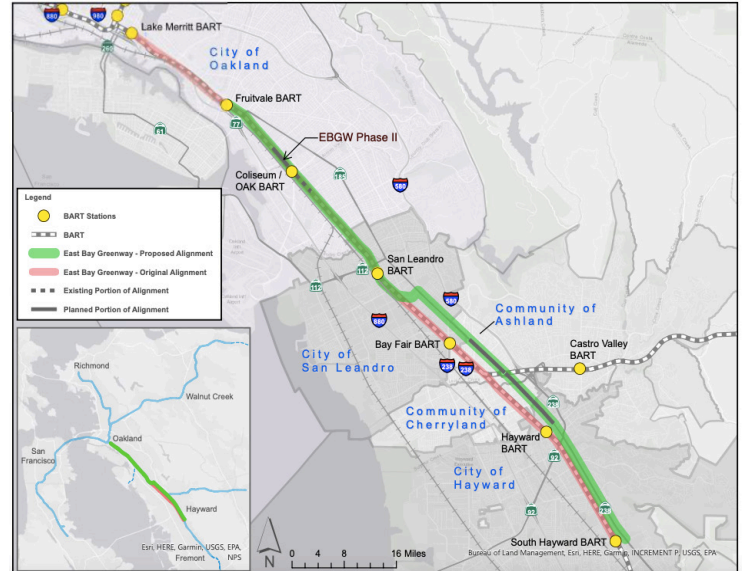
The Alameda County Transportation Commission is proposing the East Bay Greenway (EBGW) Multimodal Project. This would be a 16-mile transit, bicycle, and pedestrian route between the Lake Merritt and South Hayward BART stations. The long-standing EBGW project, which would construct a trail next to the BART alignment along this segment, is the long-term vision of the EBGW project.

- Near Term: Improved facilities for biking, walking, and transit improvements on roadways from Oakland to South Hayward: 3-5 years
- Long Term: Urban trail facility next to BART alignment: Over a 10+ year horizon

The Alameda County Transportation Commission is collaborating with residents, businesses, and member agencies to support economic development and places where people gather.

- Examples of potential improvements include better lighting, murals, and artwork
- Creation of community spaces when feasible

MAP OF PROJECT AREA



POTENTIAL PROJECT IMPROVEMENTS



Protected Bikeway: Ashland

Bikeway with green stormwater infrastructure buffer



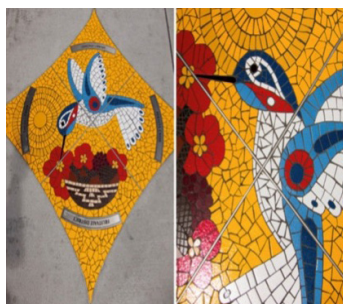
Improved Streetscape: NYC

Opportunities to create more public space at oversized or skewed intersections



Eden Night Live: Ashland

Programming events in surface lots can activate empty space and connect residents



Wayfinding Mosaic: Oakland

Art may be incorporated into the sidewalk and streetscape

PROJECT BENEFITS

- Safe, high-quality option for biking and walking for all abilities
- Improved design at bus stops: new benches, shelters, trash cans, and public art
- Enhanced multimodal connections between and to seven BART stations planned to become mobility hubs
- Landmarking and artwork to unite the corridor through design elements
- Parking and curb management to support cycling and walking improvements and business activity
- Potential for additional community gathering spaces
- Opportunities to create buslets or parklets at bus stops when feasible

TIMELINE

- Winter 2021-2022: Agency engagement
- Spring 2021-2022: Advance early engineering, environmental review, seek construction funding
- Spring 2022: Public engagement in San Leandro
- Summer-Fall 2022: Public engagement in Ashland, Cherryland, and Hayward
- 2023: Final design and engineering
- 2024: Construction pending funding

For questions on the project, or to be added to the project email list and learn about upcoming opportunities to provide input, please contact Aleida Andrino-Chavez at aandrino-chavez@alamedactc.org.