

# East Bay Greenway Phase I: E14th Street & Mission Boulevard Multimodal Corridor Project



## PROJECT OVERVIEW

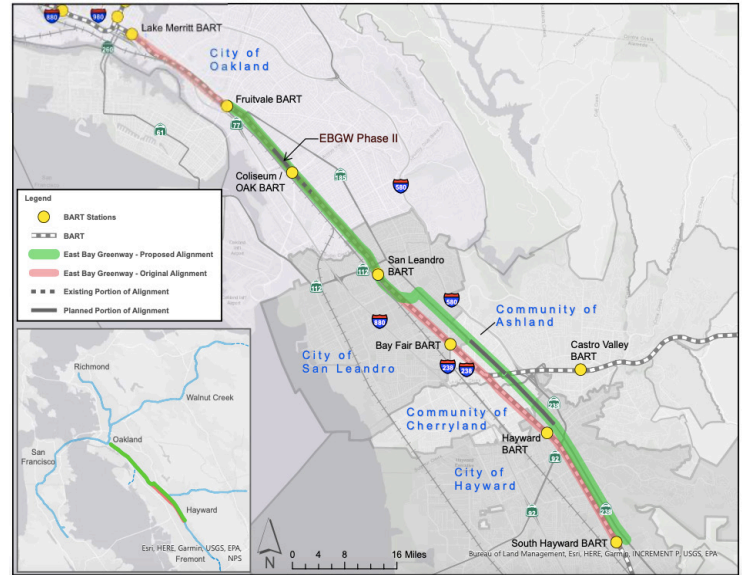
The Alameda County Transportation Commission is proposing to build the East Bay Greenway (EBGW), a 16-mile trail route on railroad tracks between Lake Merritt and South Hayward BART stations. This long-standing EBGW project, which would construct a trail on the railroad tracks, has been split into two phases: short-term (3-5 years) and a long-term project (10-15 years).

- Phase 1: This near-term phase will build facilities for biking, walking, and transit on roadways from Oakland to South Hayward.
- Phase 2: EBGW will continue to work with the Union Pacific Railroad to implement the trail facility in a 10+ year horizon.

The Alameda County Transportation Commission is collaborating with residents, businesses, and city agencies to support economic development and placemaking.

- Examples of potential improvements include better lighting, murals, artwork, and additional community gathering spaces
- Creation of community spaces when feasible

## Map of Project Corridor



## Potential Project Improvements



Protected Bikeway: Ashland

Bikeway with green stormwater infrastructure buffer



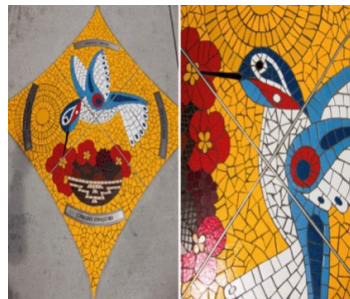
Improved Streetscape: Williamsburg, NYC

Opportunities to create more public space at oversized or skewed intersections



Eden Night Live: Ashland

Programming events in surface lots can activate empty space and connect residents



Wayfinding Mosaic: Oakland

Art may be incorporated into the sidewalk and streetscape

## PROJECT BENEFITS

- Safe, high-quality option for biking and walking for all abilities
- Improved design at bus stops: new benches, shelters, trash cans and public art
- Enhanced multimodal connections between and to seven BART stations planned to become mobility hubs
- Landmarking and artwork to unite the corridor through design elements
- Parking and curb management to support cycling and walking improvements and business activity
- Potential for additional community gathering spaces
- Opportunities to create buslets or parklets at bus stops when feasible

## Timeline

- Winter 2021-2022: Agency Engagement
- Spring 2021-2022: Advance early engineering, environmental review, seek construction funding
- Spring 2022: Agency Engagement
- 2023: Final Design and Engineering
- Goal: Delivery in 3-5 years

For questions on the project, or to be added to the project email list and learn about upcoming opportunities to provide input, please contact Aleida Andrino-Chavez at [aandrino-chavez@alamedactc.org](mailto:aandrino-chavez@alamedactc.org).