

# East Bay Greenway Phase 1: E14th St. & Mission Blvd. Multimodal Corridor Project



## Project Purpose

- Construct 16 miles of north-south bicycle & transit corridor on local streets, San Leandro Blvd, and E14th Street & Mission Blvd
- Support housing and job growth through sustainable transportation options
- Increase and support transit riders by improving access to bus stops, service reliability, and safety

## A Central County Vision for the East Bay Greenway

- Safe, high-quality option for biking and walking for all ages and abilities
- Transit service improvements to increase access for equity priority communities along the corridor and support housing and job growth
- Placemaking strategies to enhance existing neighborhoods and support the local economy and new development

## East Bay Greenway Benefits

### Near-term: East Bay Greenway Phase 1

- Class IV cycle tracks, buffered bike lanes, and off-street bikeways
- Improved bus shelters and stops
- Shorter and safer crosswalks
- Landscaping and lighting treatments
- Landmarking and artistic enhancements

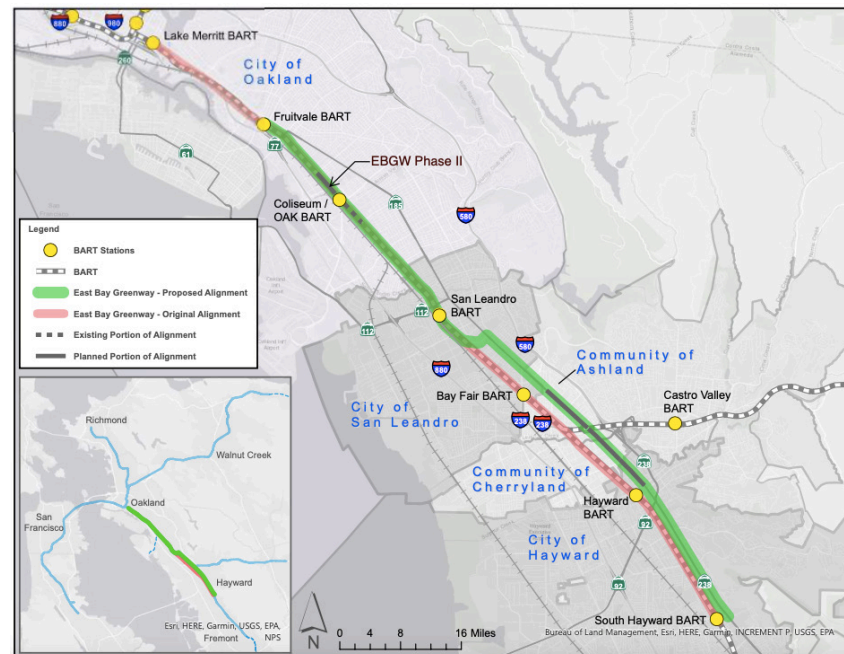
### Long-term: East Bay Greenway Phase 2

- Rails-to-trails or rails-with-trails

## East Bay Greenway Overview (EBGW)

The long-standing EBGW project, which would construct a trail on the railroad tracks, has now been split into a near-term phase that will construct facilities for biking, walking, and transit on roadways from Oakland to South Hayward. The project will connect 7 BART stations and will include placemaking and streetscape amenities that will enhance existing roadways and support local businesses.

## Map of Project Corridor



## East Bay Greenway Phasing



Passengers wait at bus parklet in Albany (Phil Erickson, CD+A).



Landscaped protected bikeway in Oakland (Derek Magee, CD+A)



A bus island and protected bikeway along Adeline Street in Berkeley, CA. (Amanda Leahy / Kittelson & Associates, Inc.)

# Economic Development and Placemaking



## What We've Heard

Local business and economic development agencies have shared the following insights



- Managing parking needs is a priority



- New developments are creating walkable centers and new public spaces



- Emphasis on supporting food-related businesses



- Programs like the Façade Improvement Grant Program were created to support businesses

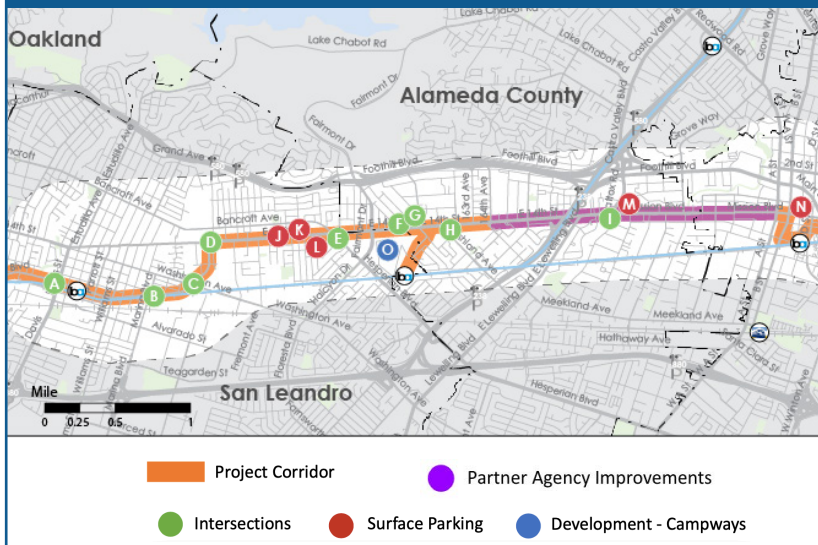
**What additional comments should we consider?**

## Economic Development and Placemaking Overview

Alameda CTC is collaborating with local residents, businesses, and city agencies to support the local community and prepare for future population growth by aligning transportation enhancements with economic development and placemaking opportunities along E14th St. & Mission Blvd.

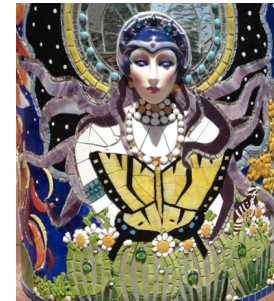
Recommended bicycle & transit improvements can be enhanced by supporting the businesses and public spaces that attract people to the area. Examples may include new pop-up spaces, improved business facades and displaying artwork approved by the local community. Finally, parking and curb management can be used to support multimodal shift and business activity.

## Opportunity Areas



## Potential Enhancements

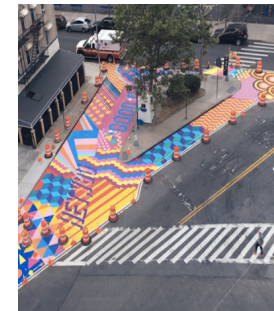
Opportunity to improve public space with art, furniture, other improvements



- Art may be incorporated into streetscape elements or street furniture



- Protected bikeways can be used to bring more plants into the area



- There may be opportunities to create more public space at skewed or oversized intersections



- Programming events in surface lots can activate empty space and connect residents

**What improvements are you interested in?**