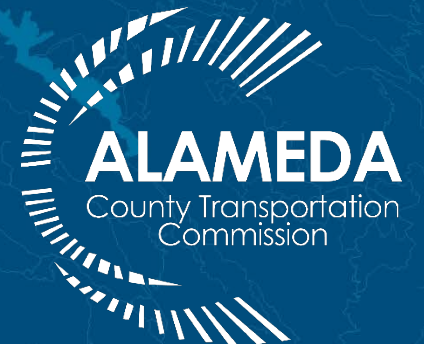


# 2021 Performance Report

Alameda County Transportation Commission

Chris G. Marks, Shannon McCarthy

March 2022



# 2021 Performance Report

- 1 Population and Economy
- 2 Transit Recovery
- 3 VMT and Congestion
- 4 Safety
- 5 Goods Movement



---

# About this Report

- Purpose of annual reporting:
  - Elucidate recent trends and highlight changes
  - Provide data to inform agency policies and decision-making
  - Meets legislative requirement
- Methodologies adapted for 2021:
  - No 2020 1-year ACS data available
  - Congestion and Active Transportation Monitoring ongoing

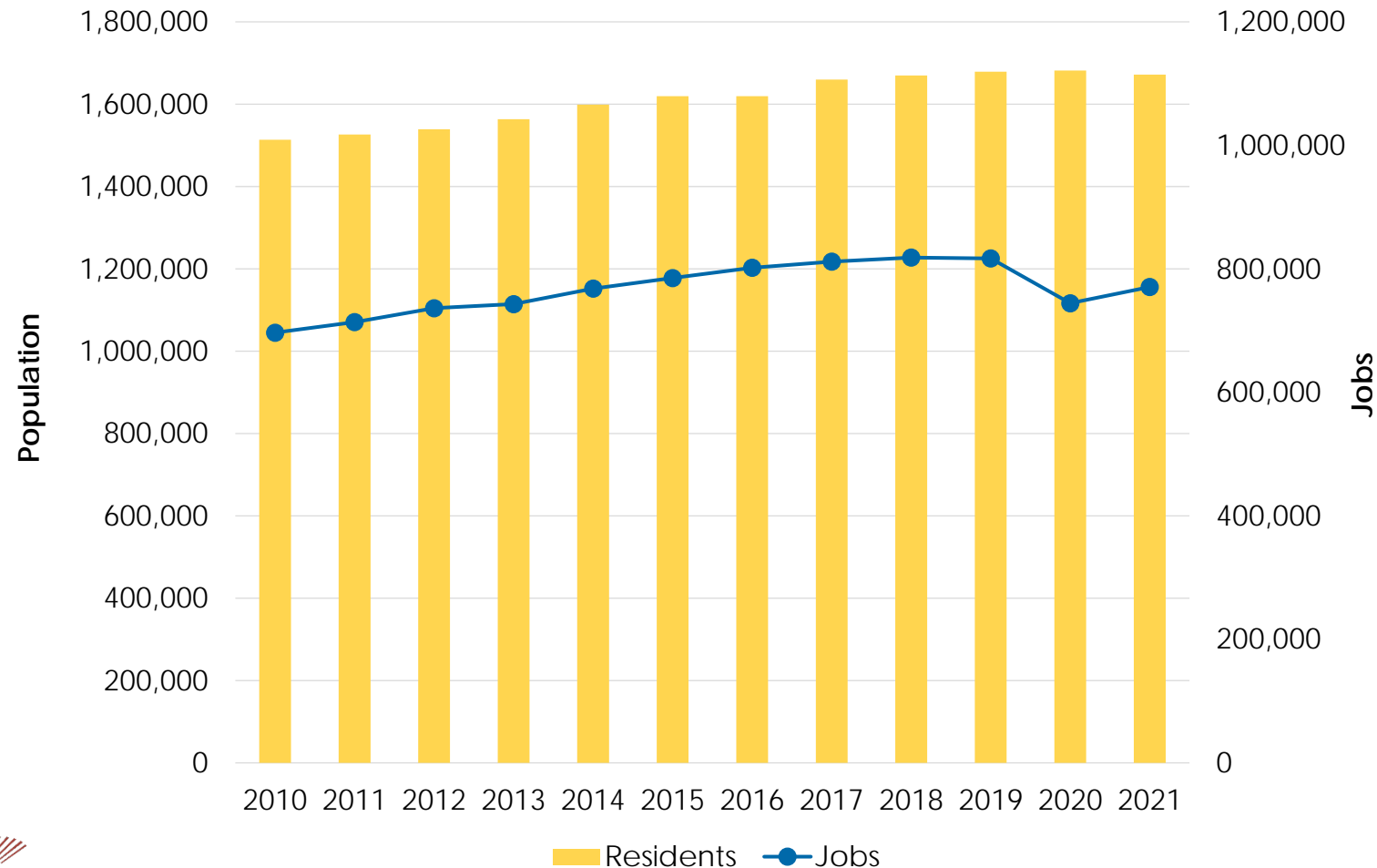
# 1

## Population and Economy: Key Findings

- Total population declined, but broad economic recovery
- Affordable units trail permitted housing
- Hybrid return to workplaces predicted

# First Year of Population Decline

Annual Population and Employment



**Total Jobs**

770,000

**Unemployment Rate**

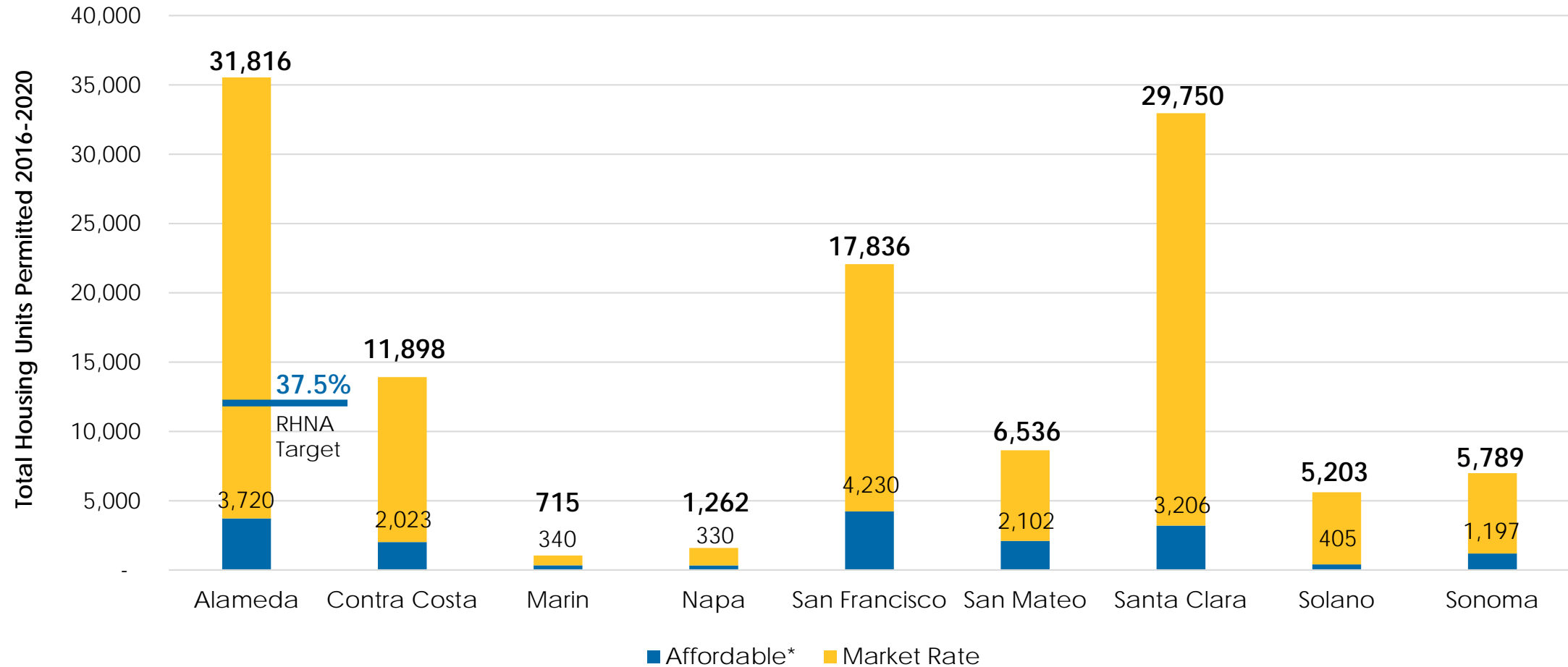
5.4%

**Total Population**

1.67M

# Leading Permitted Housing

Housing Units Permitted 2016 – 2020





# Employers Expect Hybrid Return

- **2019:** More than 90% of workers in office 4-5 days per week
- **2020:** Many workers shift fully remote
- **2021:** Bay Area lags behind all other metro areas in return to the office, many still fully remote
- **Near-future:** Many employers expect 3-day (in office) hybrid schedule

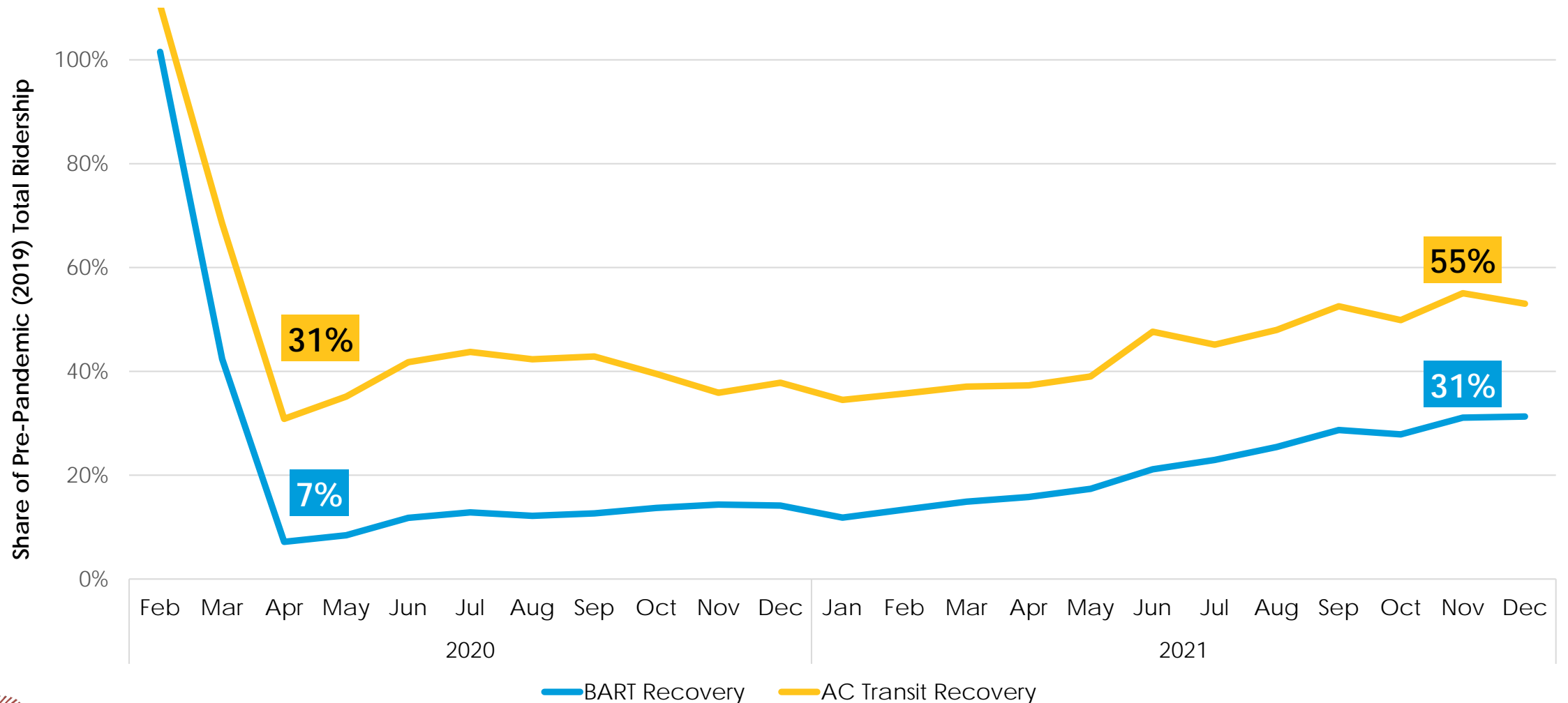
# 2

## Transit Recovery: Key Findings

- Total ridership down, but recovering
- Rising operating costs

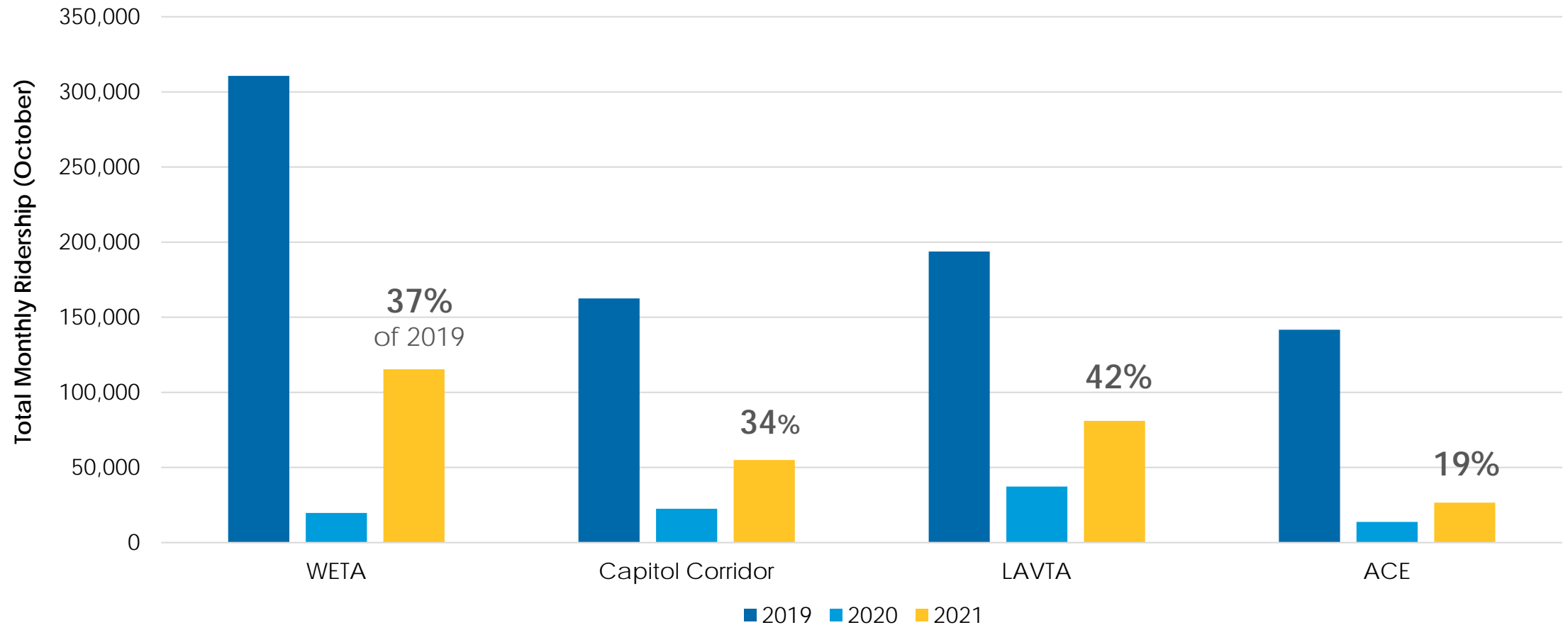


# Transit Ridership Recovering Slowly

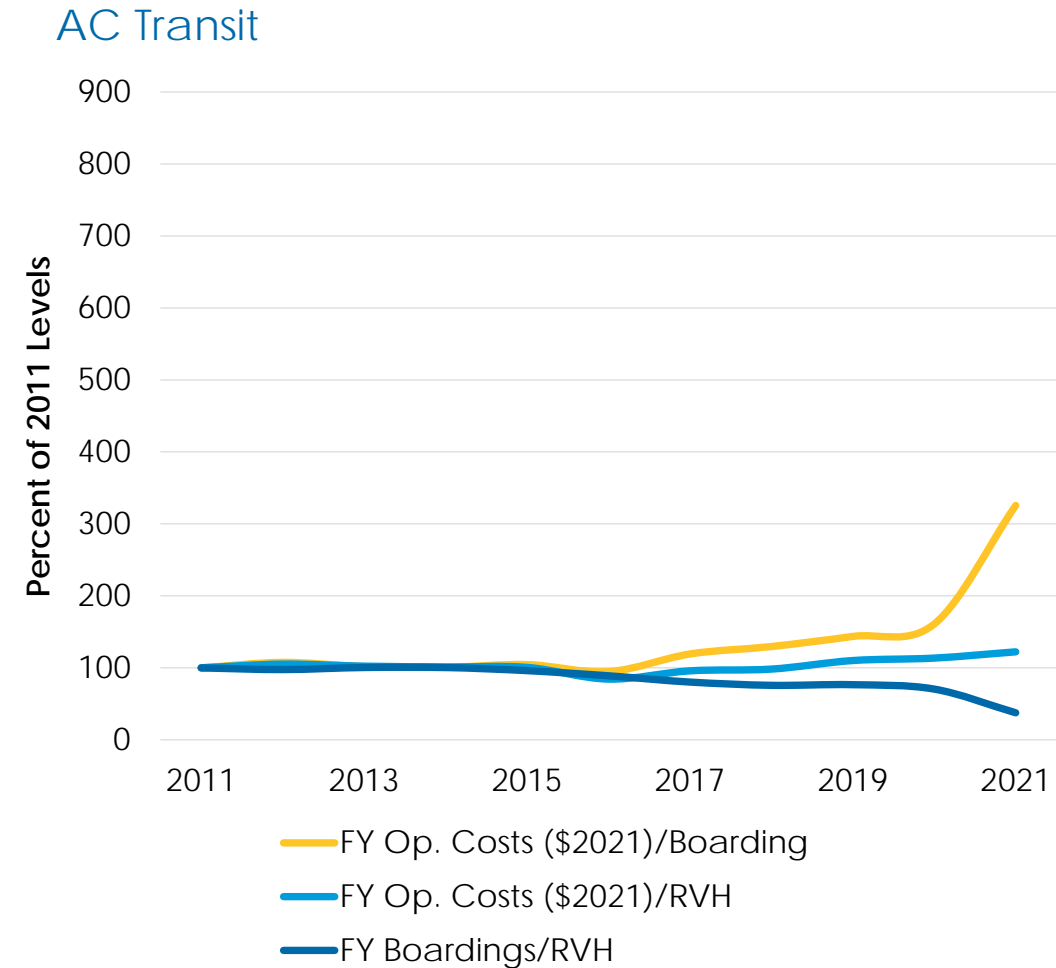
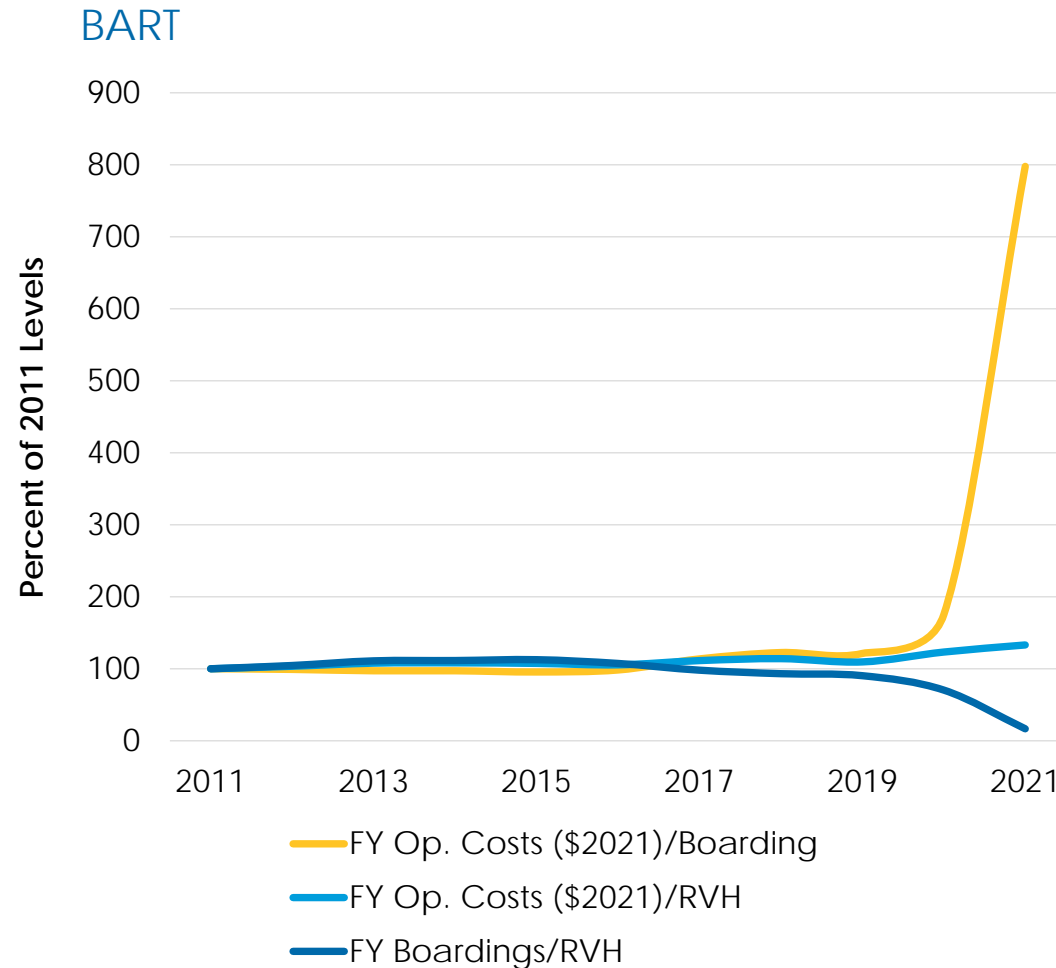


# Strong Recovery Relative to 2020

Total Monthly Ridership For Smaller Transit Operators



# Spike in Operating Cost per Boarding



Source: BART, AC Transit NTD FY2011-2020, Provisional 2021

# Looking Ahead

- Investments in bus priority are paying off: East Bay BRT/Tempo exceeding pre-pandemic ridership
- Regional efforts underway



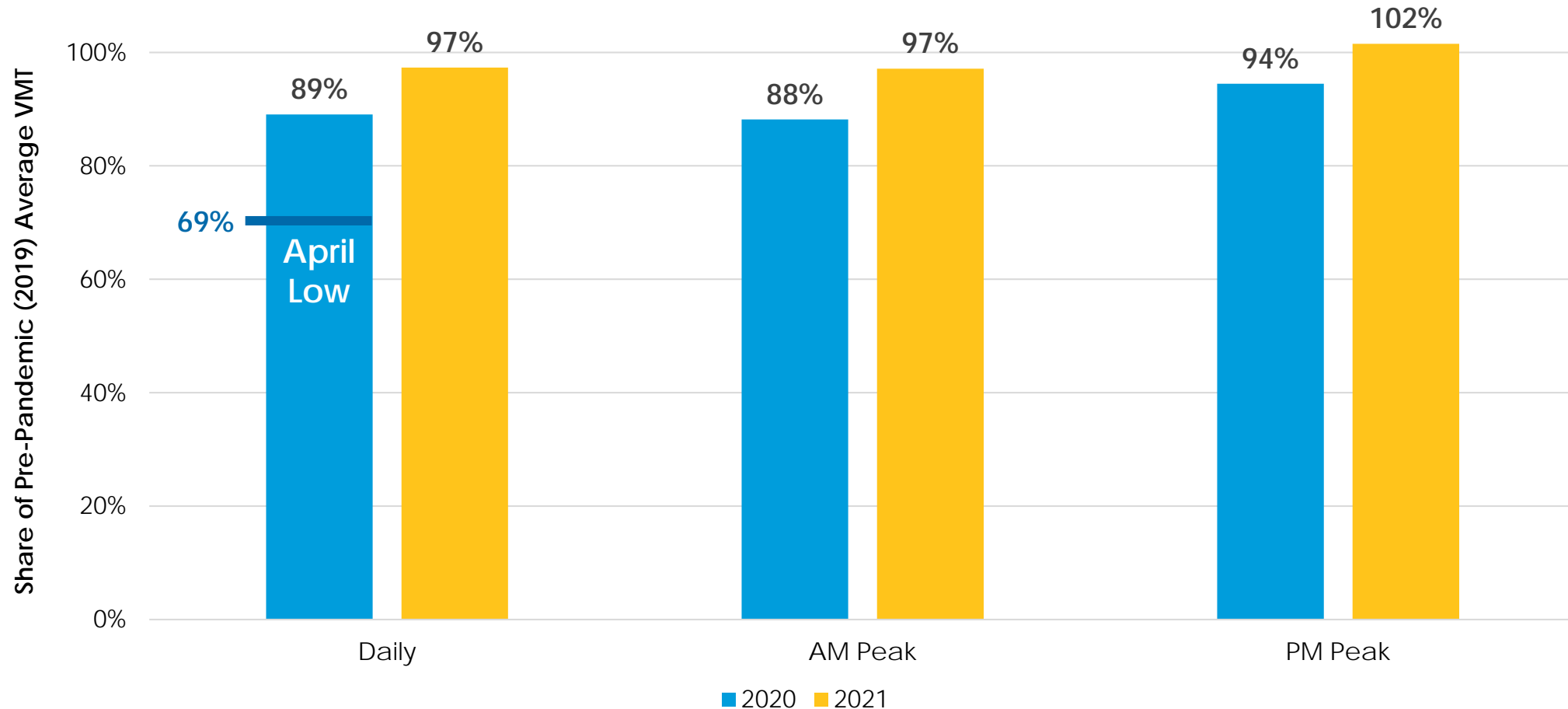
# 3

## VMT and Congestion: Key Findings

- Total travel nearing pre-pandemic levels
- Congestion returning to afternoon commute
- Bridge volumes down

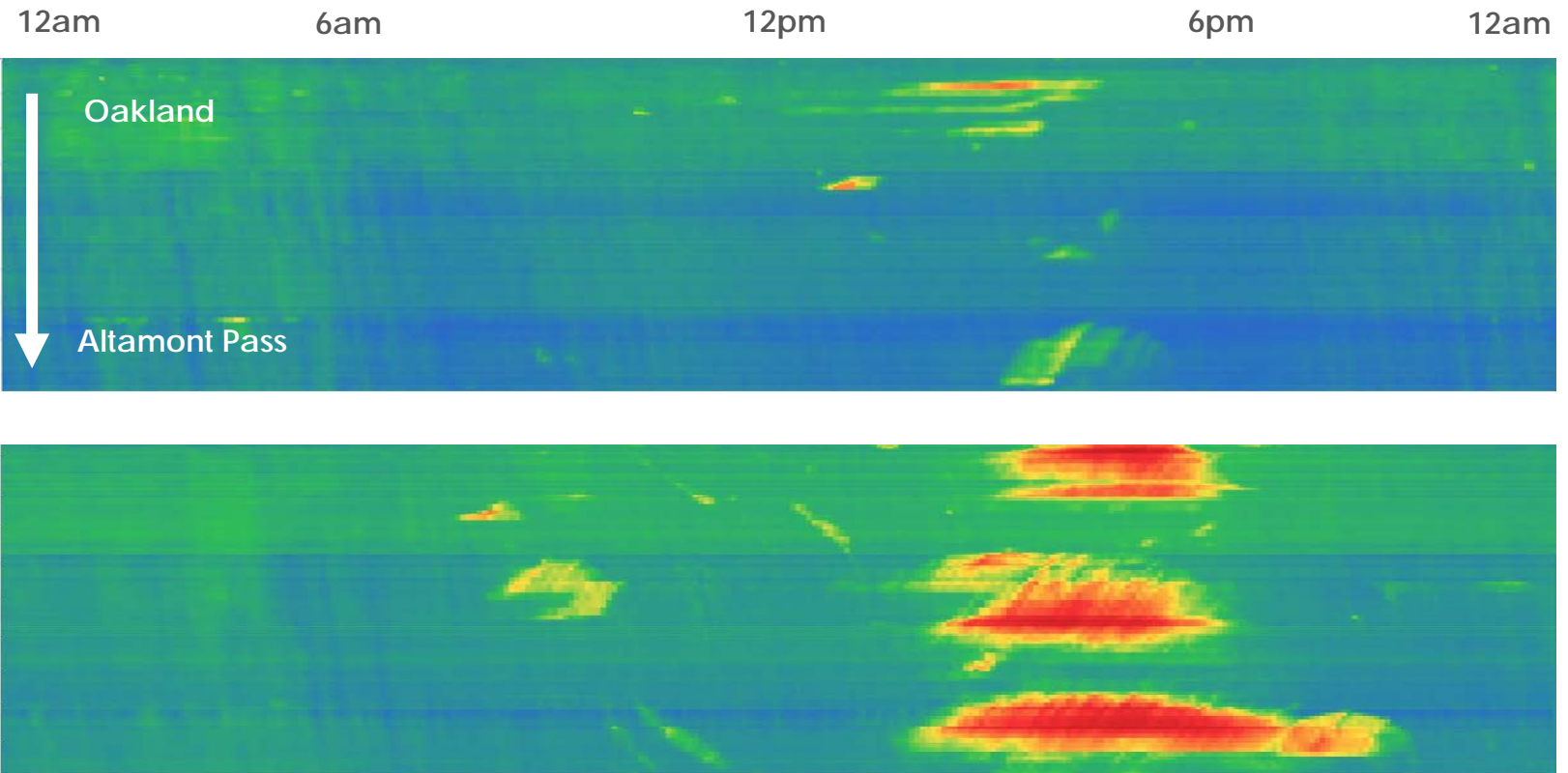
# VMT Mostly Recovered

Countywide Average Vehicle-Miles Traveled



# Congestion Returning

I-580 East Bound Speed

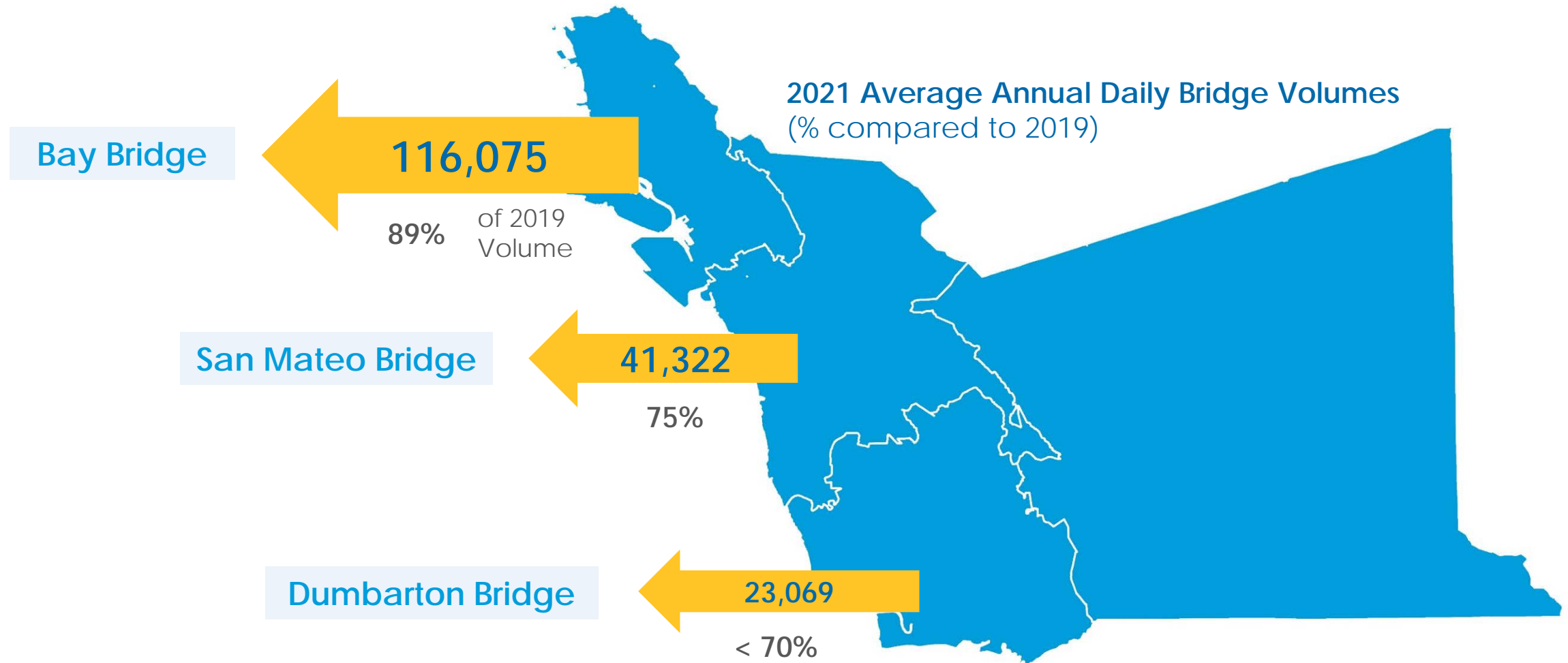


April 2020

October 2021



# Bridge Volumes Lagging



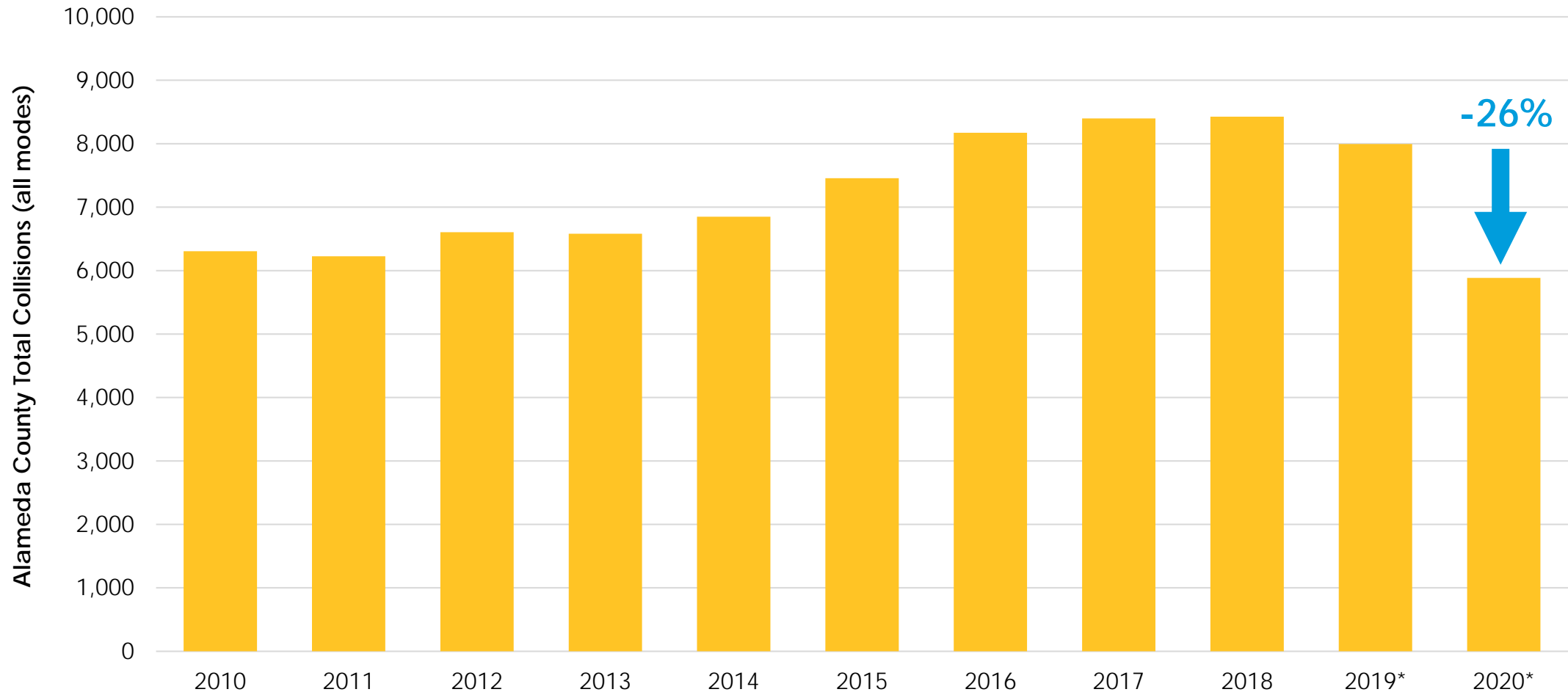
# 4

## Safety: Key Findings

- Drop in total collisions
- Rise in pedestrian collisions
- Rise in fatal collisions

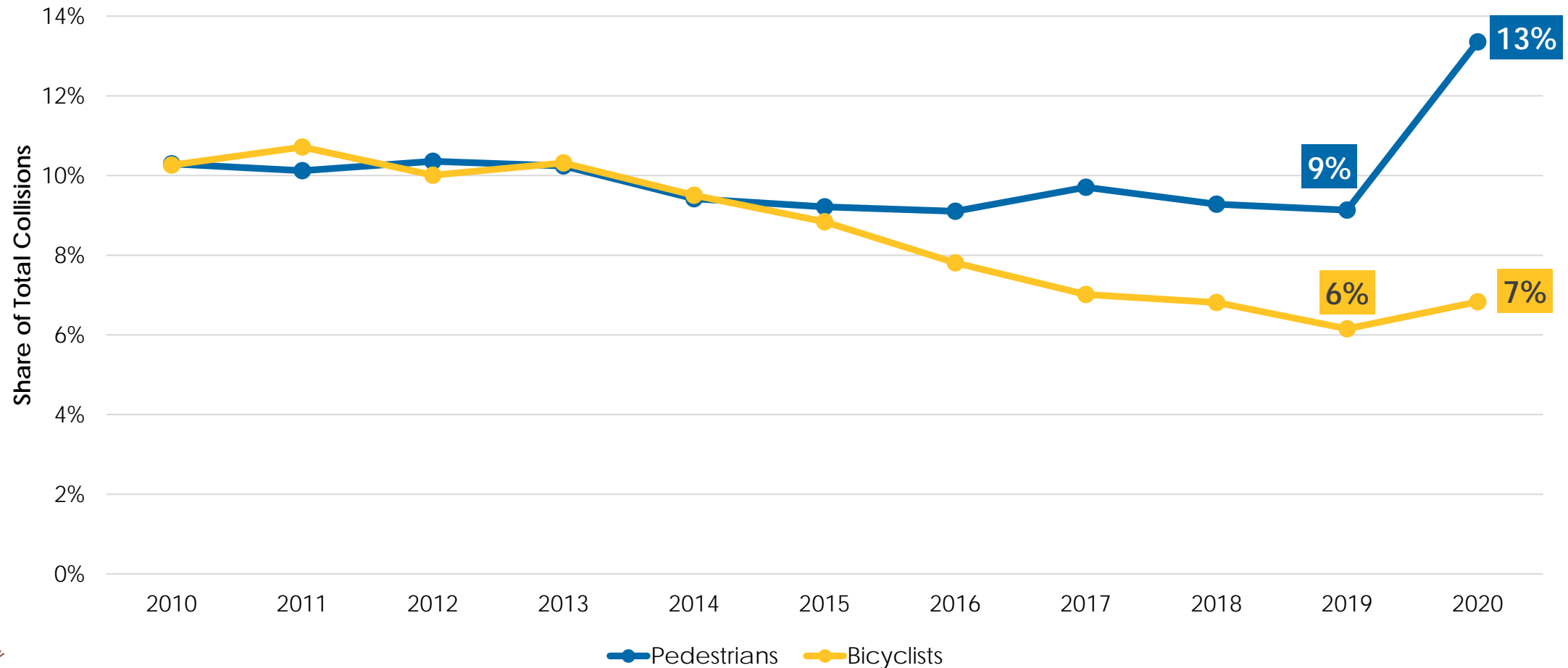
# Significant Drop in Total Collisions

Total Collisions 2010 – 2020 (all modes)



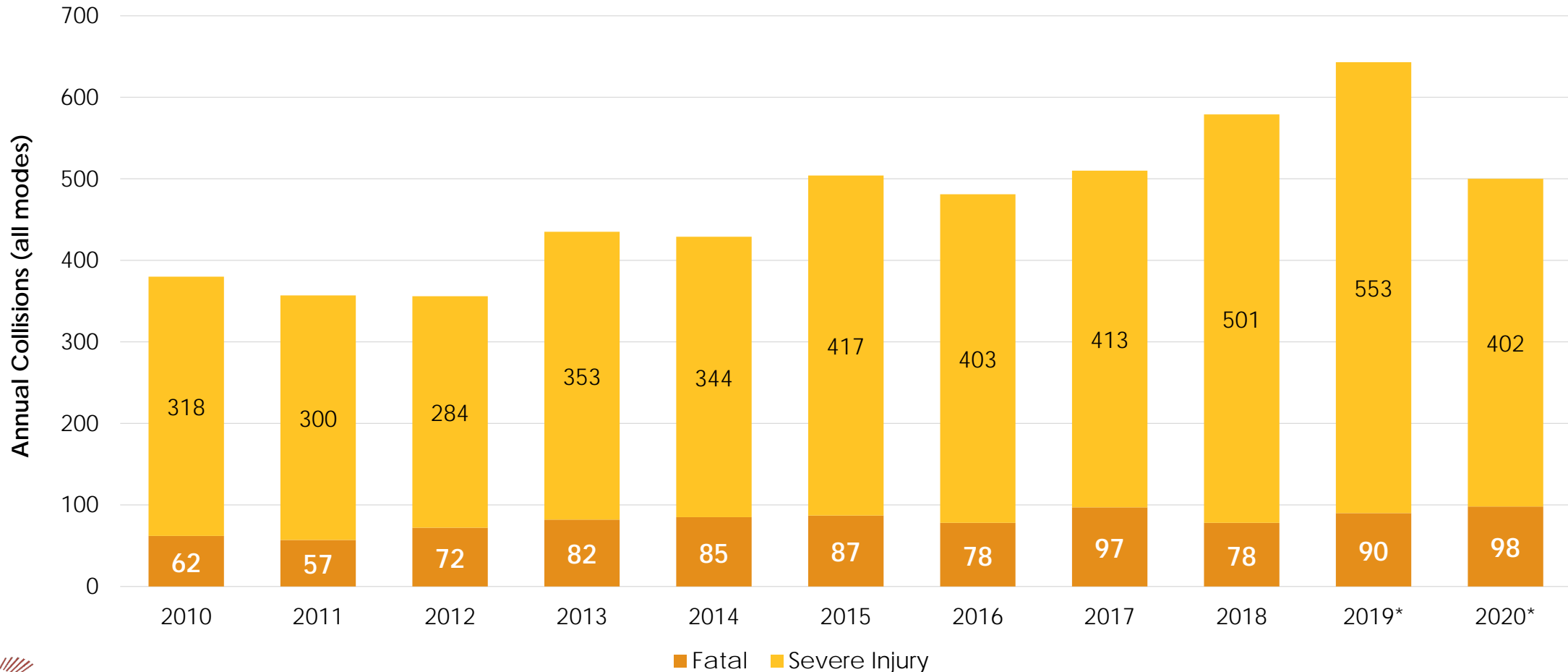
# Bike Ped Safety Remains a Concern

Share of Total Collisions by Mode



# Severe Injuries Down, Fatalities Up

Fatal and Severe Collisions 2010 – 2020 (all modes)



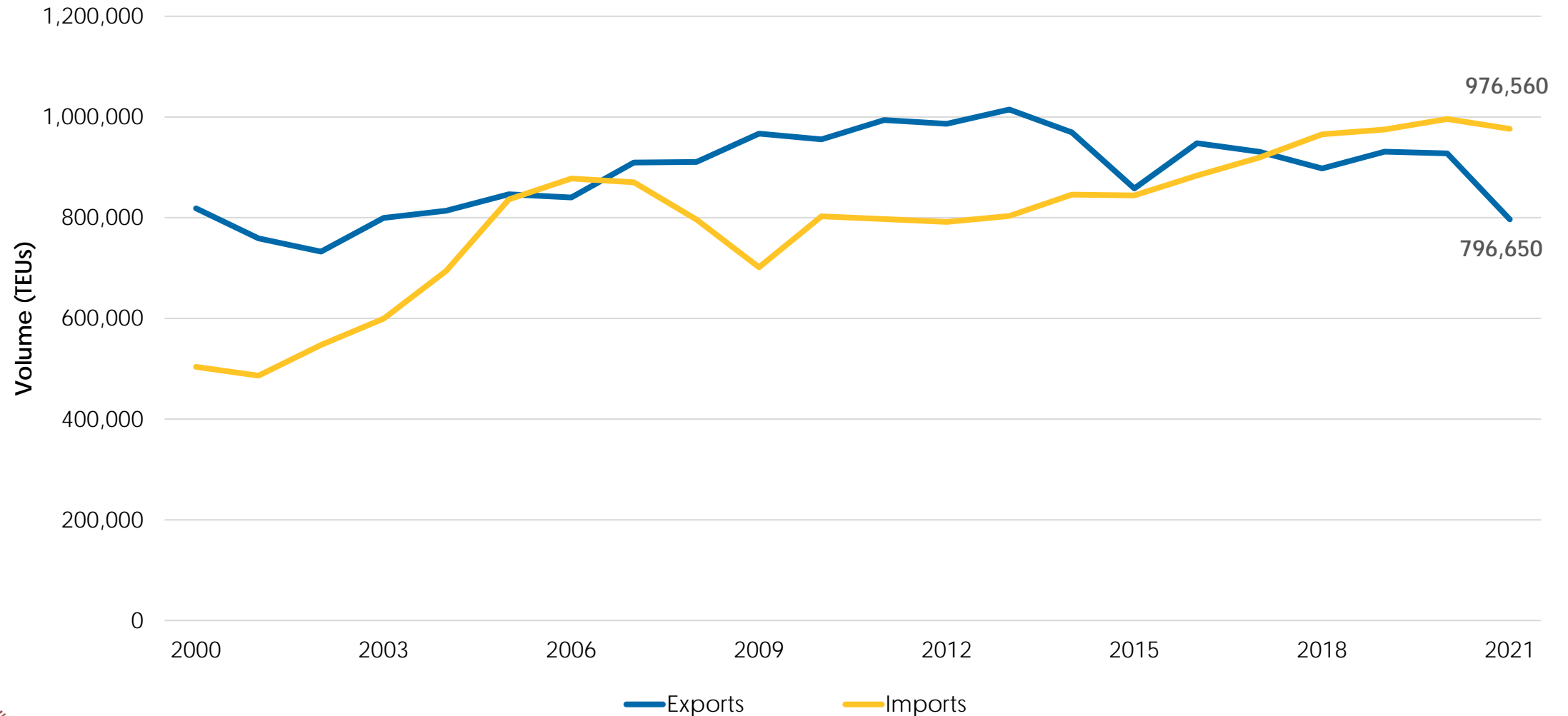
Source: TIMS, Alameda County 2010-2020, \*Provisional Data

# 5

## Goods Movement: Key Findings

- National rank fell from 8 to 10
- Port volume declined, driven by falling exports

# 2021 Drop in Port Volume





---

# Conclusions

- Long-term population and economic trends unclear
  - Hybrid schedules expected for many
- Transit ridership remains low; concerning financial outlook
  - Recent recovery rates & targeted investments are encouraging
- Intra-county congestion has largely returned
- Rising fatal collisions a top concern

# Thank You!

Alameda County Transportation Commission • 1111 Broadway, Suite 800  
Oakland, CA 94607 • 510.208.7400

