



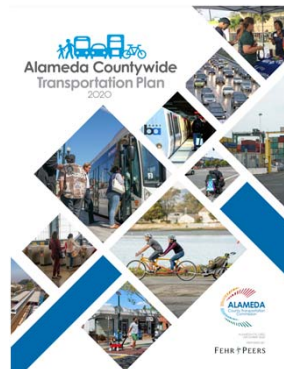
# Countywide Cycle Connectors



Bicycle and Pedestrian Advisory Committee  
February 17, 2022

## Background and Need

- 2020 Countywide Transportation Plan (Goals, programs, projects)
  - Community Based Transp. Plans (Equity Framework)
- 2019 Countywide Active Transportation Plan
- TEP programmatic elements
- Growing regional, state, and federal focus on safety (safe systems)



# Definition and Purpose

## Definition

Countywide Cycle Connectors build off priorities already identified in the Countywide Active Transportation Plan and Countywide Transportation Plan to form a **cohesive network** of **safe** and **comfortable** bike routes of **countywide importance**.

## Purpose

- Prioritize Resources (staffing, funding, and advocacy)
- Phase Delivery
  - **Near-term:** Advance most impactful and feasible projects
  - **Long-term:** Support more transformative and visionary projects
- Connect with regional active transportation planning work



# Principles

## Countywide Transportation Plan Goals

- Safe, Healthy, and Sustainable
- High Quality and Modern Infrastructure
- Accessible, Affordable, and Equitable
- Economic Vitality

## Countywide Active Transp. Plan Goals

- Safety
- Multimodal Connectivity
- Impactful Investment
- Encouragement

- 1 Safe and Comfortable
- 2 Equitable
- 3 Continuous and Connected
- 4 High Quality
- 5 Visionary



# Principles

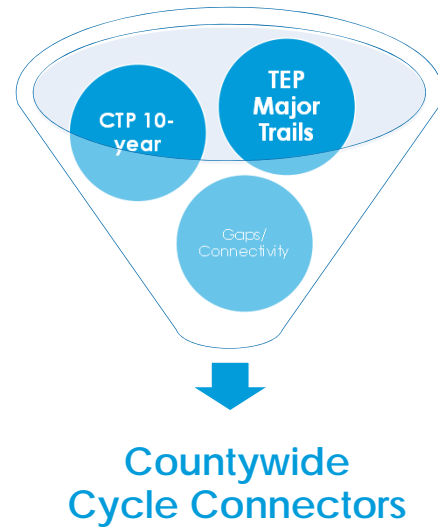
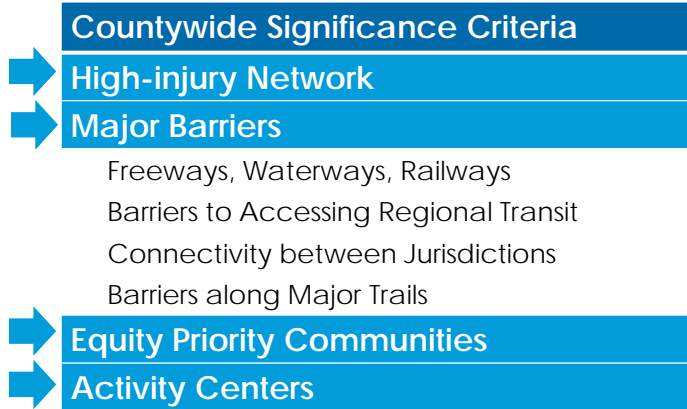
- 1 Safe and Comfortable** - The network prioritizes improvements on or near high-injury corridors and maximizes separation and comfort.
- 2 Equitable** - The network provides efficient and affordable travel and access to equity priority communities.
- 3 Continuous and Connected** - The network provides access across major barriers to create a network of continuous long-distance multijurisdictional bikeways throughout Alameda County. It prioritizes high quality connections to activity centers and high-frequency transit.
- 4 High Quality** - On-street bikeways are assumed to be comfortable and high-quality and consistent with established guidelines. Separated paths are for the shared-use of people walking and biking.
- 5 Visionary** - The network includes specific identified facilities in some locations and corridors requiring further planning in others. The network includes some feasible near-term projects and other more transformative projects that require a long-term development process.



# Selection Criteria



## Countywide Significance



## Regional Planning / Connection to CCCs

- Intent to align Alameda CTC efforts with regional planning and requirements by:
  - Facilitating coordination and local involvement with regional planning process
  - Creating resources to help cities meet Regional Plan/CS Policy requirements
  - Identify and support competitive projects through CCC planning to meet federal, state, and regional goals



# Schedule

