

Housekeeping Rules

1) Changing Your Name in Zoom

- Participants → hover over your name/# on the right side → Click rename
- First Name, Last Name, Company Name
 - ✓ Example: Chris Segur – Parsons

2) Connect your phone audio to Zoom meeting

- On your phone call keypad, press #participantID#

3) Camera Settings

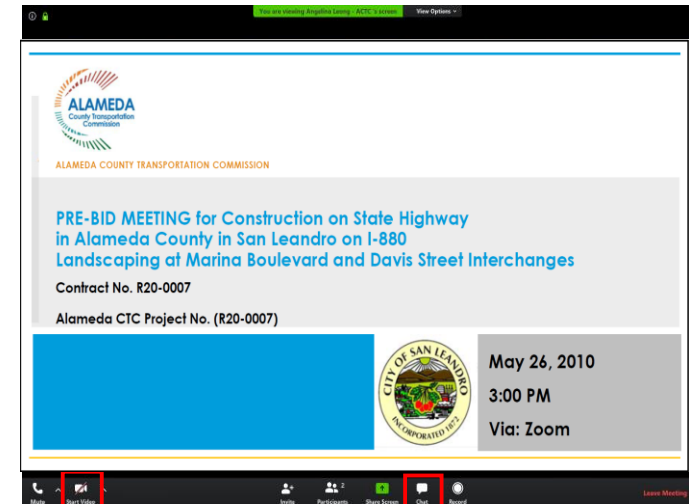
- Turn off camera

4) Audio Settings

- If called upon, dial *6 in phone call keypad to unmute

5) Chat

- Open chat (in controls at the bottom) to ask/view questions
- Chat settings should be to everyone
- If question is on a particular slide, precede the question with "S (slide number)"
 - ✓ Example: S2: How do I unmute myself?





T-80 Gilman Interchange Improvements

**CALTRANS
and the
ALAMEDA COUNTY TRANSPORTATION COMMISSION
PRESENTS**

**Optional Pre-bid Meeting
for**

04-Ala-80-6.4/6.8

04-0A7724

Project ID 0420000288

**CONSTRUCTION ON STATE HIGHWAY AND CITY
STREET IN ALAMEDA COUNTY IN BERKELEY AND
ALBANY FROM 0.6 MILE NORTH OF UNIVERSITY AVE
OVERCROSSING TO 0.3 MILE SOUTH OF EL CERRITO
SEPARATION AND OVERHEAD**



Presented By
Gary Huisings, Deputy Executive Director of Projects
August 30, 2021

Welcome



Pre-bid Meeting Panel

Caltrans

Ayanna Nobles, Branch Chief

Ron Kiaaina, Regional Project Manager

Tom Robinson, Duty Senior

Andrew Baskerville, Area Construction Manager

City of Berkeley

Farid Javandel, Transportation Division Manager

Hamid Mostowfi, Supervising Traffic Engineer

Alameda CTC Team

Gary Huisingh, Deputy Executive Director of Projects

Dale Dennis, Project Manager

Chris Segur, Design - Parsons

Primes Seeking Assistance



04-Ala-80-6.4/6.8
04-0A7724, Project ID 0420000288

Agenda

- I. Project Overview
- II. Contract Specifics
 - I. Utilities
 - II. Specialty Work
 - III. Union Pacific Railroad Crossing
 - IV. Coordination with Adjacent Projects
 - V. Work Restrictions
 - VI. Additional Requirements
- III. Contract DBE requirements
- IV. Questions and Answers

Ayanna Nobles, Branch Chief
California Department of Transportation

Chris Segur, Senior Project Manager
Parsons

I-80 Gilman Interchange Improvements

Project Description

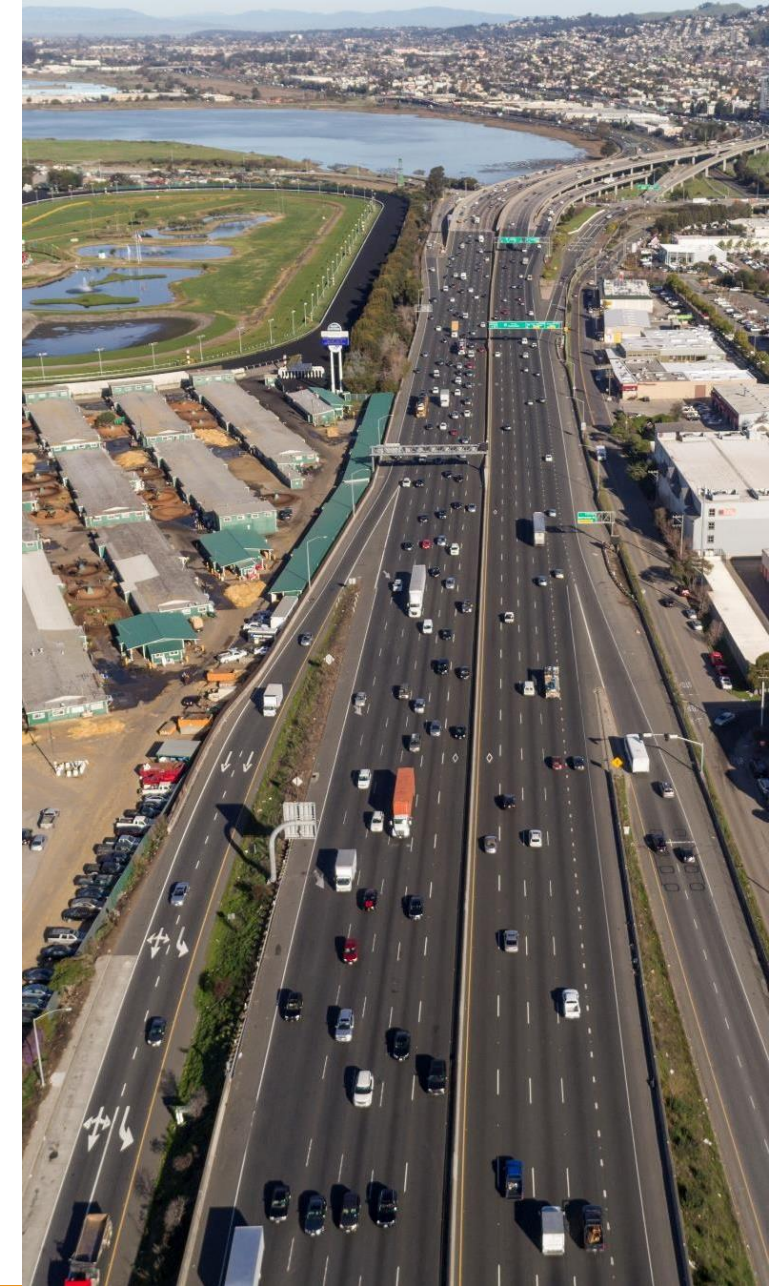
Reconfigure the I-80 Gilman Interchange to Improve:

- Navigation, Mobility and Traffic Operations
- Reduce congestion
- Shorten Queues
- Minimize Merging and Turning Conflicts
- Pedestrian/bicycle overcrossing over I-80
- SF Bay Trail Extension, will close the gap in local and regional bicycle facilities.

Estimated Capital Cost: \$59 Million
Construction complete 2024

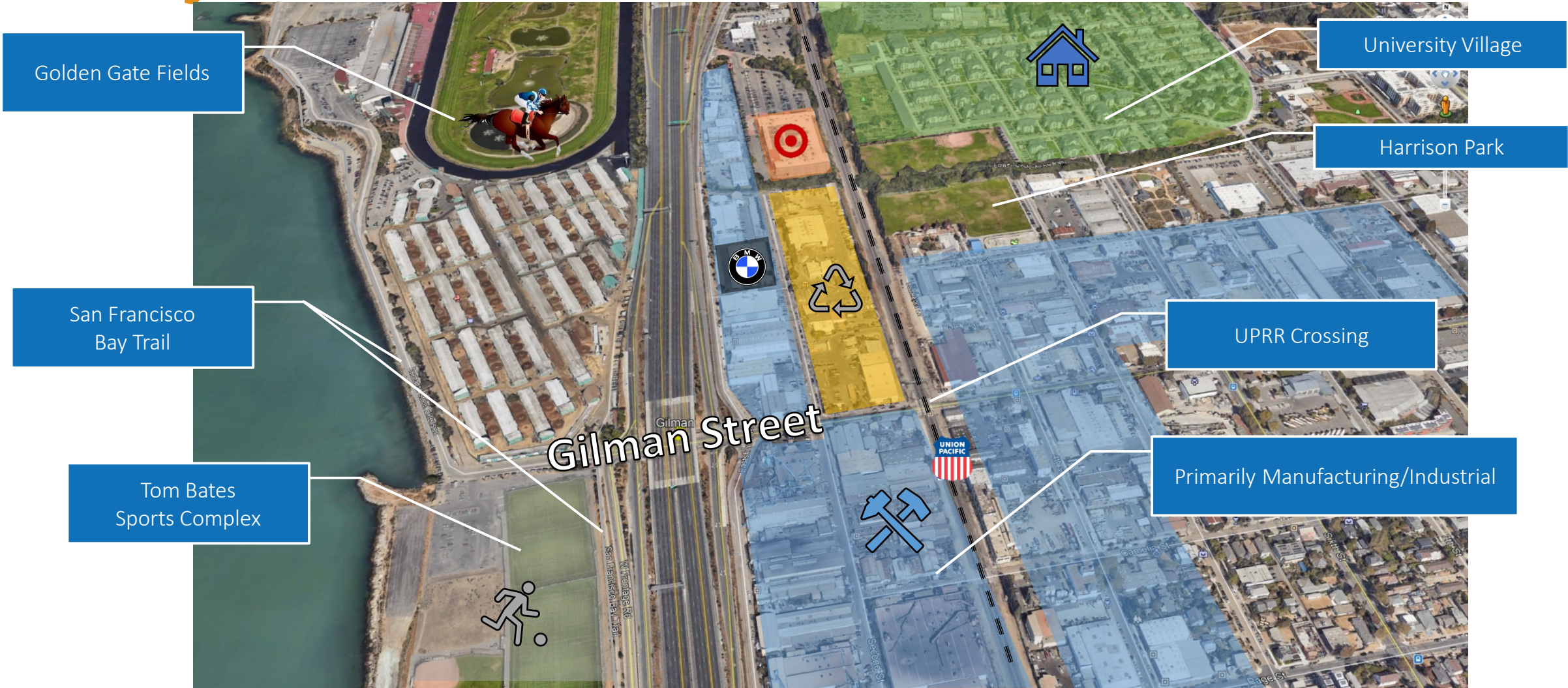


Measure BB





Project Location



04-Ala-80-6.4/6.8
 04-0A7724, Project ID 0420000288

Utilities

- EBMUD 12" RCW Along Eastshore Highway and Gilman Street.
 - EBMUD Representative Must be on Site for all Work
 - ESA Requirements on Special Provision 14-1.02 Excerpt
 - 36" Sanitary Sewer Force Main

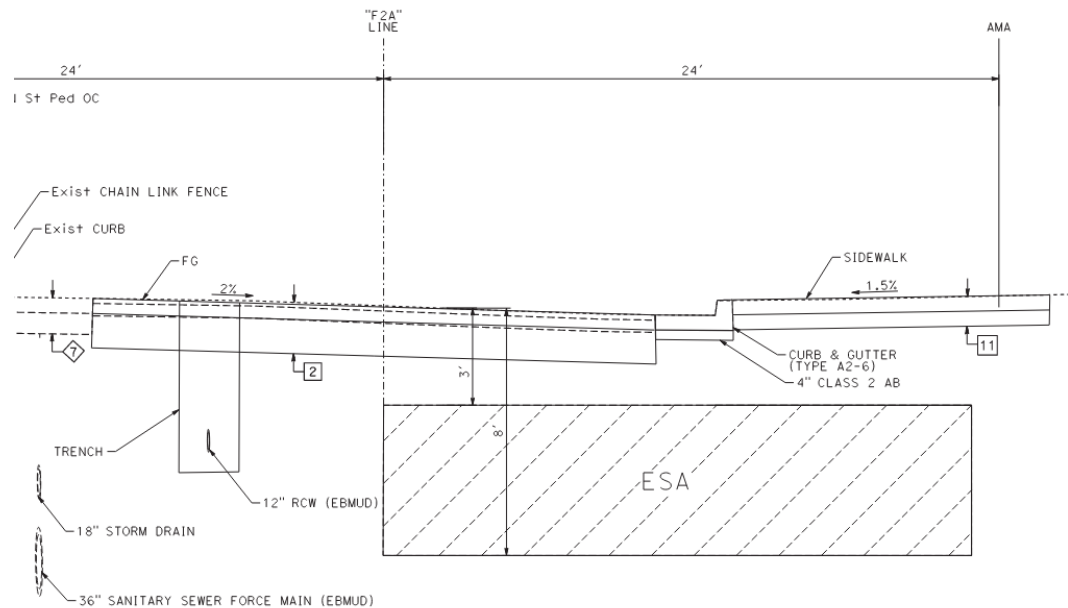


Figure 1 –CONSTRUCTION DETAILS SHEET C-79 Excerpt

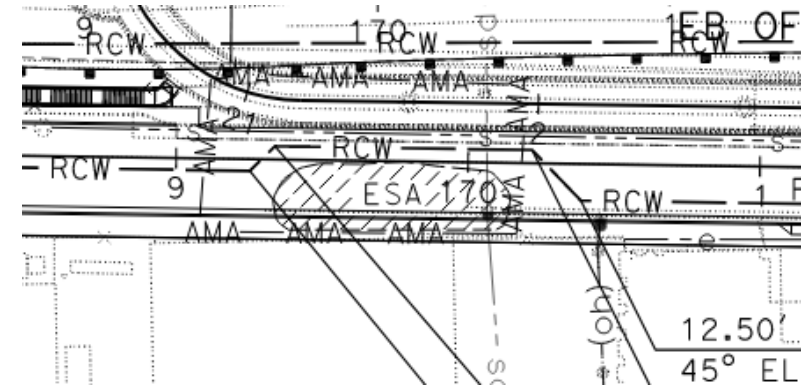


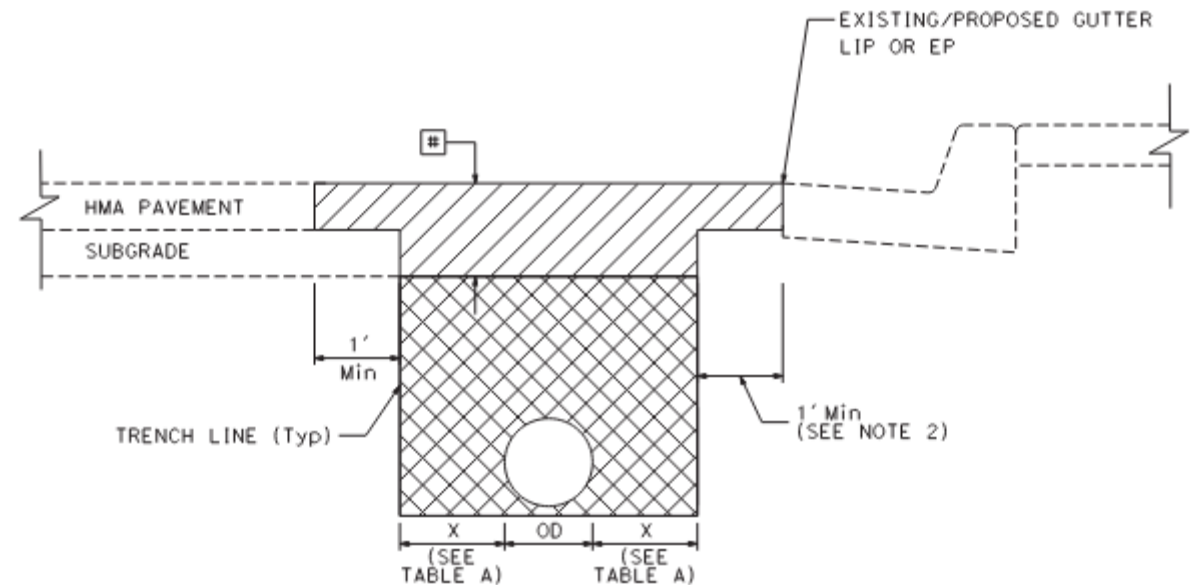
Figure 2 –UTILITY SHEET U-8 Excerpt

Utilities

- PG&E Electric and AT&T Fiber Optic Underground Facilities
 - Work Completed by Others
 - Joint Trench Along Gilman Near Curtain Wall
- City of Berkeley Sewer Main Line Along Gilman Street
 - Special Provision 77-7.01A Excerpt
 - A Portion of Pipe Crossing Under Western Roundabout Central Island is Encased With Welded Steel Plate
 - City of Berkeley Standards are Being Used for Sewer Main Line, Manholes and Manhole Covers Within Caltrans R/W
 - Trench Pavement Restoration Detail C-90 Excerpt

NOTES:

1. 1' Min T-CUT WITHIN CITY R/W ONLY. ONLY EXTEND HMA PAVEMENT LAYER BEYOND TRENCH LINE.
2. WHERE THE TRENCH PARALLELS CURB AND THE NEAREST TRENCH LINE IS LESS THAN 3 FEET FROM THE GUTTER LIP, ALL EXISTING AC/HMA MUST BE REPLACED TO GUTTER OF LIP.

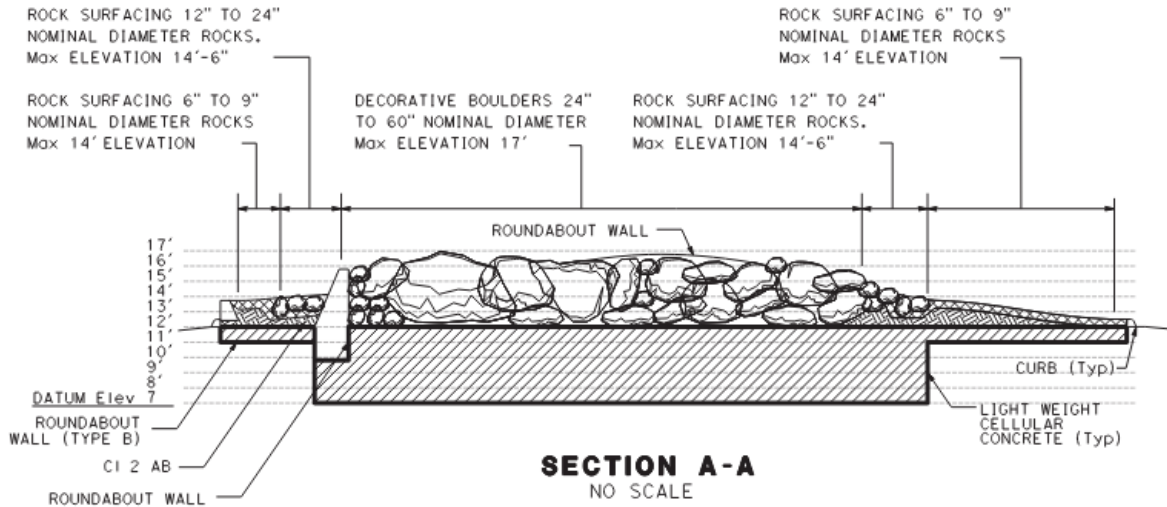


TRENCH PAVEMENT RESTORATION

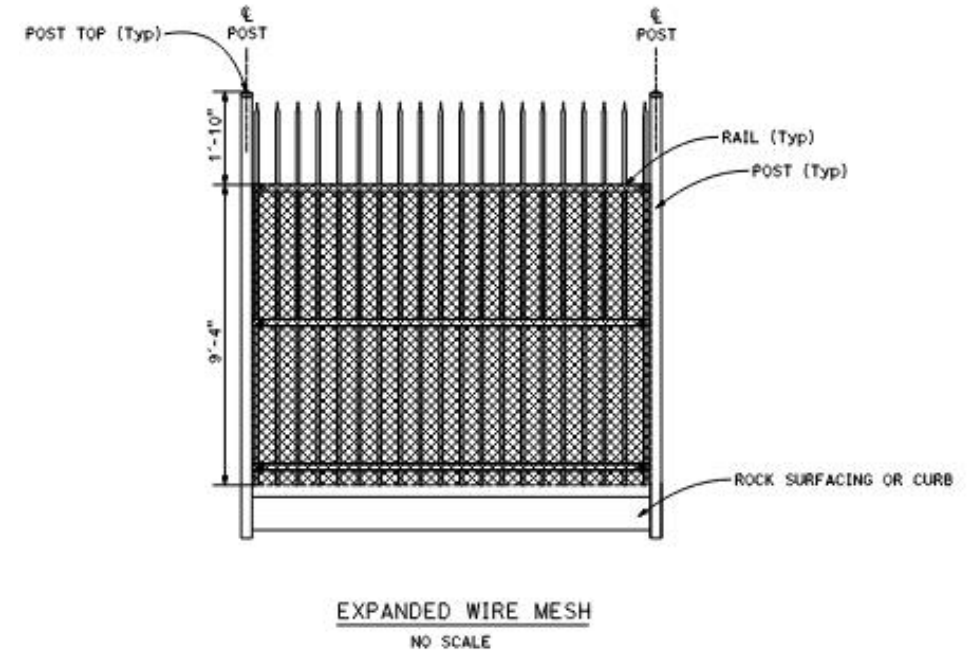
TRENCH PAVEMENT RESTORATION DETAILS C-90 Excerpt

Specialty Work

- Lightweight Cellular Concrete
- Tall Wrought Iron Fence



CONSTRUCTION DETAILS C-78 Excerpt



Tall Wrought Iron Fence Detail 3 Excerpt

Union Pacific Railroad Crossing

- Coordinate Timeline of Closure With UPRR
- Total Length of Closure is Provided in Specifications
- Order long-lead materials early
- Railroad Work by UPRR Forces at Gilman/UPRR Crossing is Expected to Take 35 Days
 - 5 Days for Crossing Widening
 - 30 Days for UPRR Signal Work
- Finish Additional Crossing Work in Remaining Days of Closure
- Refer to IH for Additional Information



Coordination with Adjacent Projects

- Special Provision 5-1.20A Excerpt
- 04-3J7004 (Median Barrier Project)
- 04-0A7714 (I-80/Gilman Ave Interchange Phase 1)

Add to the end of section 5-1.20A:

During the progress of the work under this Contract, work under the following contracts may be in progress at or near the job site of this Contract:

Coincident or Adjacent Contracts

Contract no.	County–Route–Post Mile	Location	Type of work
04-0P5104	Ala-13_80_580_880-Var	On Rte. 80, at Rte 13/80 Separation and Gilman St. Undercrossing	Bridge deck treatment
04-3J7004	Ala-80-4.5/R7.6	On Rte. 80, from 13/80 Separation North to 0.4 Mile East of El Cerrito Separation and Overhead	Construct median barrier lights and paving
04-0A7714	Ala-80-6.4/6.6	On Rte. 80, between University Ave. and Gilman Street	Construct Gilman pedestrian overcrossing
04-2Q2504	Ala-80/580-Var	On Rte. 80 and Rte 580, at various locations	Install High Friction Surface Treatment

Figure 1 -Special Provision 5-1.20A Excerpt

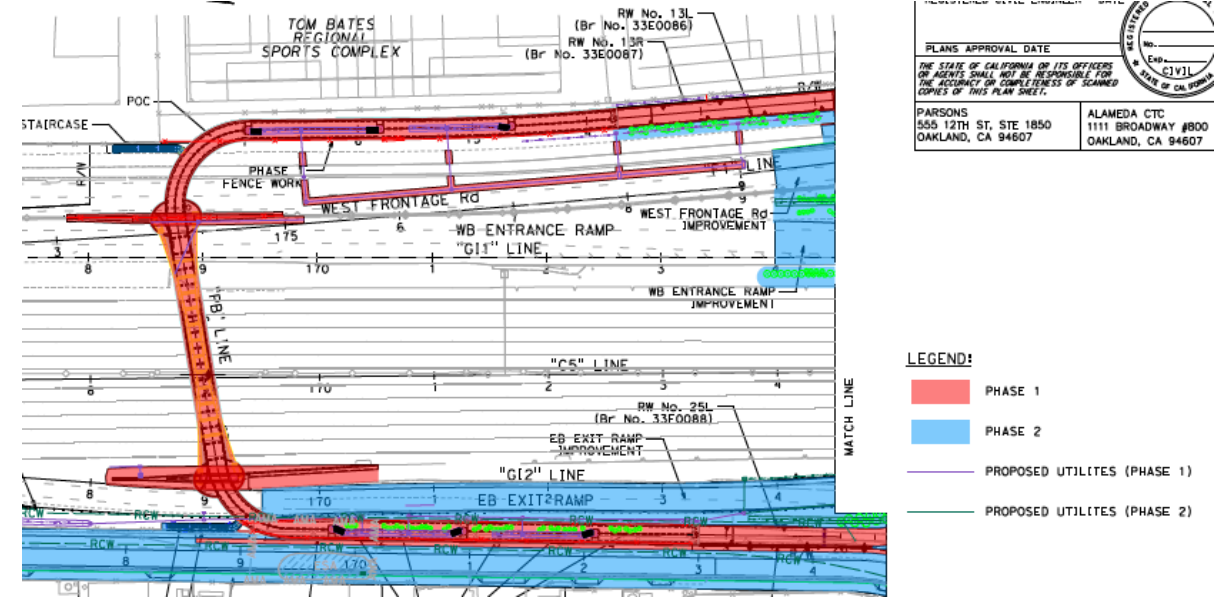


Figure 2- Gilman Phases Exhibit Excerpt – Information Handout

Coordination with Adjacent Projects

Project	2020				2021				2022				2023				2024			
	Q1	Q2	Q3	Q4	Q1	Q2	Q3	Q4	Q1	Q2	Q3	Q4	Q1	Q2	Q3	Q4	Q1	Q2	Q3	Q4
Phase 1 (POC)							Construction	Construction	Construction	Construction	Construction	Construction	Construction	Construction						
Phase 2 (Roundabouts)							Advertise/Award	Construction	Construction	Construction	Construction	Construction	Construction	Construction	Construction	Construction	Construction	Construction	Construction	Construction
Barrier Project**				Advertise/Award	Construction	Construction	Construction	Construction												

* All information shown is tentative and subject to change

**Caltrans Median Barrier Lighting Project

Advertise/Award	Yellow
Construction	Green

Median Barrier Project



Work Restrictions

- Special Provision 10-1.03 Excerpt
- Work Restricted to Specific Dates:
 - All Work on EB Exit Ramp and Eastshore Highway Within Caltrans R/W
 - All Work on WB Entrance Ramp and West Frontage Road
 - All Work at Golden Gate Fields
- Special Provision 12-4.02C Excerpt
 - No Work is allowed to be done from November 21 to January 3 Within Gilman Street From Frontage Road to Hopkins Street.

Replace *Reserved* in section 10-1.03 with:

Do not work at the following locations until [October 29, 2021](#):

- [1. Gilman Street "GS LINE" from Sta 5+20 to Sta 14+00](#)
- [2. Eastshore Highway "F2A LINE" from Sta 176+55 to Eastshore Highway "F3 LINE" Sta 179+55](#)

Do not work at the following locations until [January 27, 2022](#):

- [1. EB Route 80 Off-Ramp "GI2 LINE" from Sta 165+43.30 to Sta 177+00.00](#)
- [2. Eastshore Highway "F2A LINE" from Sta 176+55 to Eastshore Highway "F3 LINE" Sta 179+55](#)

Do not work at the following locations until [May 15, 2022](#):

- [1. WB Route 80 On-Ramp "GI1 LINE" from Sta 167+47.33 to Sta 176+40.00](#)
- [2. West Frontage Road "F LINE" from Sta 170+00.00 to Eastshore Highway "F1 LINE" Sta 181+00](#)

No work is allowed [in Golden Gate Fields](#) from [December 26](#) to [June 14](#).

[No work is allowed in Golden Gate Fields from August 15 to September 30.](#)

[No work is allowed in Golden Gate Fields from October 15 to December 15.](#)

[No work is allowed in Union Pacific Railroad right of way or easements from May 2nd to June 5th \(or as otherwise coordinated with UPRR\).](#)

Figure 2 - Special Provision 10-1.03 Excerpt

[Do not perform work from November 21 to January 3 within Gilman Street from Frontage Road to Hopkins Street.](#)

Figure 1 - Special Provision 12-4.02C(1) Excerpt

Title VI

Caltrans ensures that no person in the state of California is excluded from participation in, denied the benefits of, or otherwise subjected to discrimination in Caltrans programs, policies, procedures, activities, and services on the grounds of race, color, national origin, sex, age, or disability.

For more information on Title VI of the Civil Rights Act of 1964 at Caltrans, please visit: <https://dot.ca.gov/programs/civil-rights/title-vi>



CALTRANS SMALL BUSINESS PROGRAM GOALS

Caltrans Overall SBP Goal

- **Disadvantaged Business Enterprise (DBE) 17.6%**
- **Small Business (SB) 25%**
- **Disabled Veteran Business Enterprise (DVBE) 5%**

PROJECT 04-0A7724 - DBE Goal: 17%
Advertisement Date: August 16, 2021
Bids open October 06, 2021

To find certified DBE firms: <https://caltrans.dbesystem.com/>

- For questions about Disadvantaged Business Enterprise (DBE) certification, email DBE.Certification@dot.ca.gov

For questions about District 4 Small Business Program please contact:
Ayanna Nobles and Jada Pugh at District4.Small.Business@dot.ca.gov

Disadvantaged Business Enterprise (DBE)

Use the database query form to find certified DBE firms to meet DBE goals on contracting requirements. Where there is a DBE goal on a contract, a Bidder must show that it took all necessary and reasonable steps to achieve a DBE goal or other requirement of [Appendix “A” to Part 26](#), by their scope, intensity, and appropriateness to the objective, could reasonably be expected to obtain sufficient DBE participation, even if they were not fully successful.

Questions/Answers

Bidder's Inquiries site:

<http://ppmoe.dot.ca.gov/des/oe/weekly-ads/addendum.php?id=04-0A7724>