



Long-Range Planning... for a Better Bay Area


WHAT IS THE PLAN?

VISION & GUIDING PRINCIPLES

FOUR ELEMENTS OF THE PLAN

Plan Bay Area 2050 is the long-range plan charting a course for the nine-county San Francisco Bay Area, slated for adoption in fall 2021.

*Ensure by the year 2050 that the Bay Area is **affordable**, **connected**, **diverse**, **healthy** and **vibrant** for all.*



- **Transportation** Strategies
- **Housing** Geographies & Strategies
- **Economic** Geographies & Strategies
- **Environmental** Strategies

2



Long-Range Planning... for an Uncertain Future

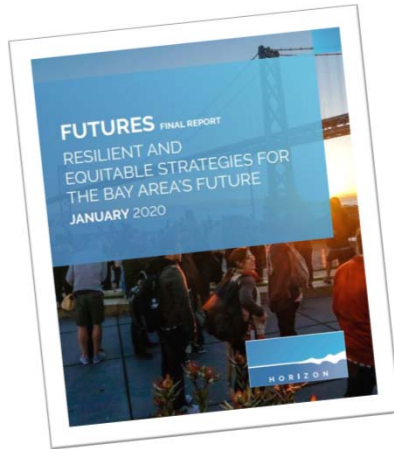
2018

2019

2020

2021

Plan Bay Area 2050 built upon the foundation of the Horizon initiative, which generated new strategy ideas and stress-tested them against a broad range of economic, technological, environmental, and political forces.



Strategies prioritized based upon:



3

PLAN BAY AREA 2050

Long-Range Planning... Driven by Public Input



Engagement to Date by the Numbers

140+ public meetings featuring discussion of Horizon & Plan Bay Area 2050

140+ public events including in-person & virtual workshops, pop-up events, and focus groups

60+ stakeholder events including RAWG and REWG meetings, workshops, and webinars

220,000+ public and stakeholder comments received to date

19,000+ participants in planning process to date

4

PLAN BAY AREA 2050

Plan Bay Area 2050: Growth Geographies

 **1.4 million** *new households between 2015 and 2050*

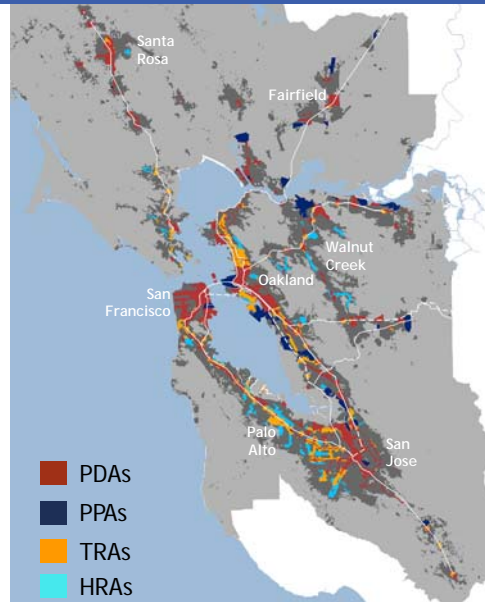
 **1.4 million** *new jobs between 2015 and 2050*

Protect

-  Areas Outside Urban Growth Boundaries (including PCAs)
-  Unmitigated High Hazard Areas

Prioritize

-   **Priority Development Areas (PDAs)**
-   **Priority Production Areas (PPAs)**
-   **Transit-Rich Areas (TRAs)**
-   **High-Resource Areas (HRAs)**



Note: some High-Resource Areas are also Transit-Rich Areas

Plan Bay Area 2050: 11 Themes, 35 Bold Strategies

 **Maintain and Optimize the Existing System**

 **Create Healthy and Safe Streets**

 **Build a Next-Generation Transit Network**

 **Protect and Preserve Affordable Housing**

 **Spur Housing Production at All Income Levels**

 **Create Inclusive Communities**

Plan Bay Area 2050 Preferred Alternative Strategies

 **Improve Economic Mobility**

 **Shift the Location of Jobs**

 **Reduce Risks from Hazards**

 **Expand Access to Parks and Open Space**

 **Reduce Climate Emissions**



Learn more about each of the 35 adopted strategies at planbayarea.org.

Bold Strategies for a More Affordable Bay Area



Reduce the region's extreme cost of living by enabling over a million new homes near public transit

Strategies include:

- Allow a Greater Mix of Housing Types and Densities in Growth Areas
- Transform Aging Malls and Office Parks into Neighborhoods
- Maintain Urban Growth Boundaries



Produce and preserve much-needed affordable housing through public, non-profit, and private sector action

Strategies include:

- Preserve Existing Affordable Housing
- Build Adequate Affordable Housing to Ensure Homes for All
- Integrate Affordable Housing into All Major Housing Projects



Provide robust discounts for low-income residents both for tolls and transit fares

Strategies include:

- Reform Regional Transit Fare Policy
- Implement Per-Mile Tolling on Congested Freeways with Transit Alternatives

7

Bold Strategies for a More Connected Bay Area



Create a world-class public transportation system, emphasizing maintenance and ridership as critical twin goals

Strategies include:

- Operate and Maintain the Existing System
- Enhance Local Transit Frequency, Capacity, and Reliability
- Expand and Modernize the Regional Rail Network



Standardize transit fares across the region and advance seamless mobility through schedule coordination

Strategies include:

- Reform Regional Fare Policy
- Enable a Seamless Mobility Experience



Permanently reduce traffic congestion through a proven approach of pricing select corridors

Strategies include:

- Implement Per-Mile Tolling on Congested Freeways with Transit Alternatives
- Build an Integrated Regional Express Lane and Express Bus Network

8

Bold Strategies for a More Diverse Bay Area



Protect renters from being displaced to the region's periphery and beyond

Strategies include:

- Further Strengthen Renter Protections Beyond State Legislation
- Preserve Existing Affordable Housing
- Support Community-Led Transportation Enhancements



Tackle racial inequities by enabling more housing in historically-exclusionary places

Strategies include:

- Allow a Greater Mix of Housing Types and Densities in Growth Areas
- Build Adequate Affordable Housing
- Accelerate Reuse of Public and Community-Owned Land



Reduce income inequality through new universal basic income and mortgage assistance programs

Strategies include:

- Implement a Statewide Universal Basic Income
- Provide Targeted Mortgage, Rental, and Small Business Assistance to Communities of Concern

9

Bold Strategies for a Healthier Bay Area



Strive to eliminate traffic deaths by making streets safer for all roadway users

Strategies include:

- Advance Regional Vision Zero Policy through Street Design and Reduced Speeds
- Build a Complete Streets Network



Protect tens of thousands of Bay Area homes from rising sea levels and from potential earthquake damage

Strategies include:

- Adapt to Sea Level Rise
- Provide Means-Based Financial Support to Retrofit Existing Residential Buildings



Tackle climate change by electrifying vehicles & buildings and reducing auto trips

Strategies include:

- Expand Clean Vehicle Initiatives
- Fund Energy Upgrades to Enable Carbon Neutrality in Existing Buildings
- Expand Transportation Demand Management Initiatives
- Expand Commute Trip Reduction Programs at Major Employers

10

Bold Strategies for a More Vibrant Bay Area



Encourage more job growth in housing-rich areas through financial incentives and streamlining

Strategies include:

- Provide Incentives to Employers to Shift Jobs to Housing-Rich Areas Well Served by Transit
- Allow Greater Commercial Densities in Growth Geographies



Preserve critical industrial lands and work to catalyze job growth in these locations

Strategies include:

- Retain Key Industrial Lands through Establishment of Priority Production Areas
- Expand Job Training and Incubator Programs



Ensure all communities have access to high-speed internet to fully participate in the digital economy

Strategies include:

- Invest in High-Speed Internet in Underserved Low-Income Communities

11

Plan Bay Area 2050: Alameda County Local Focus

How might the Plan Bay Area 2050 strategies make Alameda County residents' lives better?

Strategy T11 Expand and Modernize the Regional Rail Network

- This strategy includes enhanced service on systems like ACE, BART, and Capitol Corridor, as well as major new rail expansions like Valley Link over the Altamont Pass and Link21 providing additional capacity in the Bay Bridge/Transbay corridor.

Strategy H2 Preserve Existing Affordable Housing

- With deed-restricted units declining throughout the 2010s in Alameda County, this strategy would fund much-needed preservation investments to reduce displacement pressures caused by San Francisco's spillover housing demand.

Strategy EC5 Provide Incentives to Employers to Shift Jobs to Housing-Rich Areas

- BART station areas throughout Alameda County, including in jurisdictions like Hayward, San Leandro, and Fremont that are more housing-rich, are ideal sites to help reduce commute times for thousands of Alameda County residents.

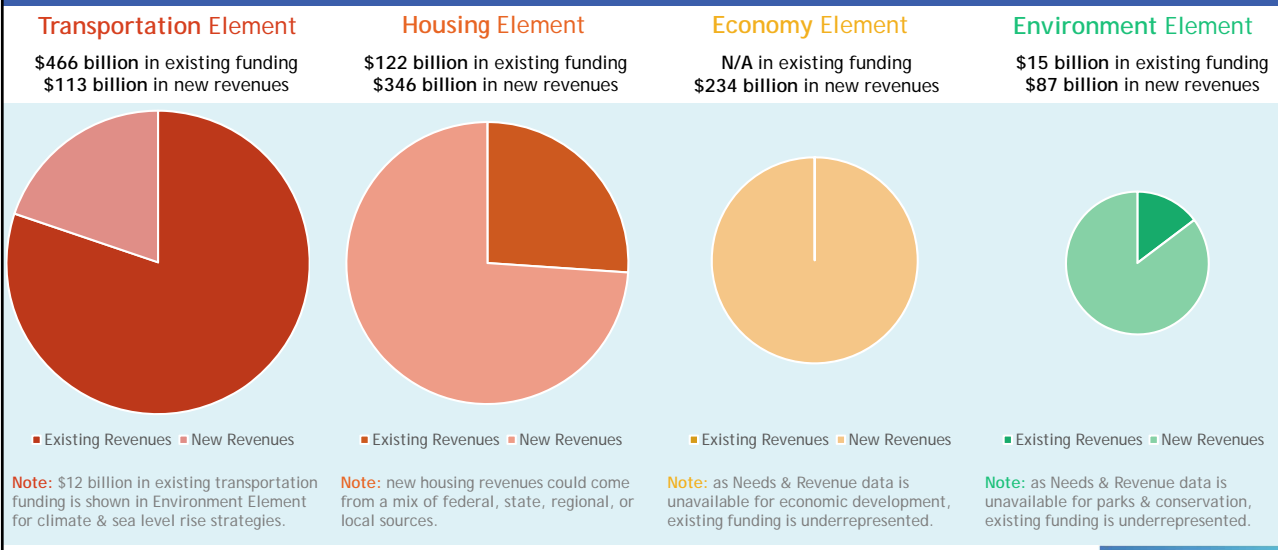
Strategy EN2 Provide Means-Based Financial Support to Retrofit Existing Buildings

- With the most homes of any Bay Area county in the very-high fire hazard severity zone - and the greatest proximity to the Hayward Fault - this strategy would retrofit 25,000 at-risk homes for wildfires and retrofit crawl spaces & soft-story homes throughout the county.

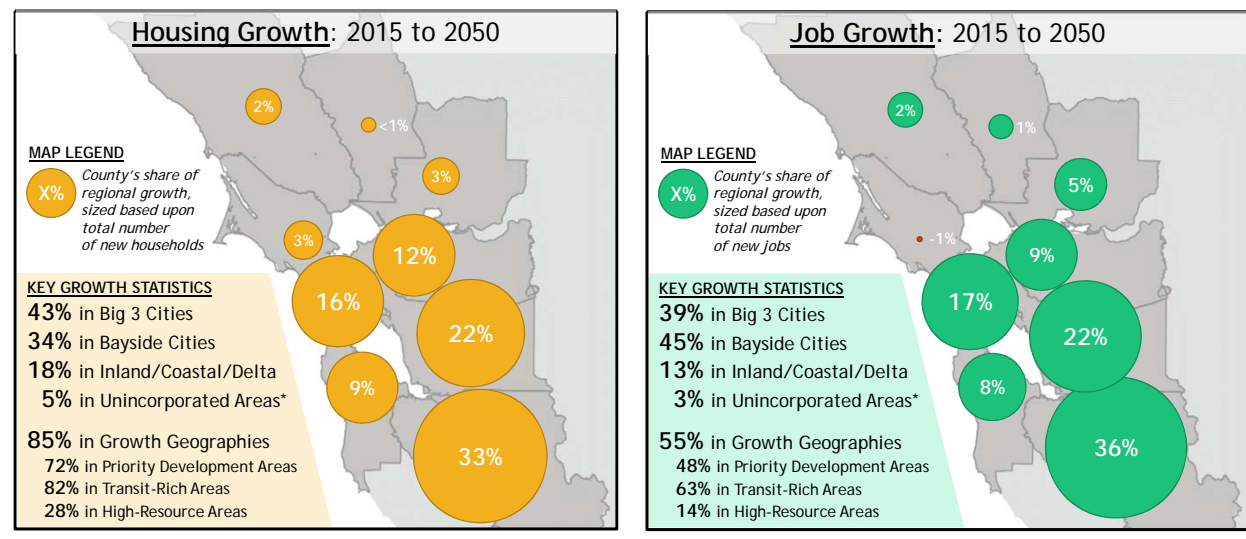
12

PLAN BAY AREA 2050

Plan Bay Area 2050: Revenues & Expenditures








Forecasting the Future: Housing & Jobs Growth



* All urbanized growth in unincorporated areas is focused within existing urban growth boundaries (Strategy EN4).
 For breakdowns on the subcounty level, please refer to the Final Blueprint Growth Pattern on planbayarea.org.
 Totals do not always sum to 100% due to rounding.

Forecasting the Future: Projected Outcomes








<p>AFFORDABLE</p> 	<p>Plan would reduce housing & transportation cost burden by 13 percentage points, with even greater improvements for low-income households</p>
<p>CONNECTED</p> 	<p>Plan would improve access to frequent transit and to safe bicycle & pedestrian facilities, enabling nearly 20 percent of workers to shift away from commuting by auto</p>
<p>DIVERSE</p> 	<p>Plan would provide more affordable housing in historically-exclusionary jurisdictions, while helping at least 10 percent of the region's low-income residents to buy their first home</p>
<p>HEALTHY</p> 	<p>Plan would meet the state-mandated greenhouse gas reduction target, while concurrently protecting nearly all homes from sea level rise impacts through 2050</p>
<p>VIBRANT</p> 	<p>Plan would improve jobs-housing balance in counties throughout the Bay Area, yielding shorter commutes for all workers</p>

Advancing Toward Implementation: Overview

Plan Bay Area 2050
30-year strategies

Implementation Plan
5-year near-term actions

The near-term Implementation Plan for Plan Bay Area 2050 is exploring the **success factors** for each of the 35 strategies, the **role** for MTC/ABAG, and specific MTC/ABAG **implementation actions**.

						
Authority	Financial Resources	Technical Capacity	Public & Political Support	Lead	Partner	Support

Moving into summer 2021, MTC/ABAG will pivot to the **partnership phase** of the Implementation Plan, identifying existing initiatives and roles for partner organizations to ensure the success of Plan Bay Area 2050.

Advancing Toward Implementation: Initial Actions

The initial actions identified in the Draft Implementation Plan focus on near-term actions - through 2025 - that MTC and ABAG can prioritize to advance Plan implementation, which will be augmented by commitments from partners this summer and fall. **Select implementation actions identified to-date are shown below and on the following slide:**



Cross-Cutting

- **Seek new revenues to support identified needs**, from a next-generation transit network to a suite of sea level rise protections to affordable housing production & preservation
- **Continue and seek greater strategic alignment** between a broad range of existing MTC/ABAG programs, including Express Lanes, FasTrak START, Clipper START, Regional Housing Technical Assistance, and Regional Trails, among others



Transportation

- **Implement the recommendations** of the Blue Ribbon Transit Recovery Task Force, the Fare Integration Task Force, and the Regional Active Transportation Plan
- **Complete & advance the TOD Policy Update** to ensure land use supports transit investments
- **Lead the next-generation's freeways study** to further explore pricing and complementary strategies through deep engagement with partners, stakeholders, and the public

17

PLAN BAY AREA 2050

Advancing Toward Implementation: Initial Actions



Housing

- **Provide financial resources and technical assistance** through the Regional Housing Technical Assistance and PDA Planning Program
- **Launch and deliver a suite of pilot projects** to equitably advance the "3 P's" of housing: protection, preservation, and production
- **Partner with local jurisdictions** to study and accelerate mall & office park redevelopment



Economy

- **Evaluate funding sources** and develop a pilot Priority Production Area (PPA) Planning and Technical Assistance program, with a goal of supporting up to five PPAs by 2025
- **Engage with local partners** on economic recovery as part of the Regional Government Partnership for Local Economic Rebound initiative



Environment

- **Explore legislative reforms** to establish clear roles for sea level rise adaptation
- **Restructure MTC Climate Initiatives program** and operational travel demand management (TDM) programs to ensure they can effectively scale over the next five years
- **Evaluate feasibility** of expanding the scope and mission of BayREN to develop a broader range of program offerings that support building retrofits and water & energy upgrades

18

PLAN BAY AREA 2050

What's Next: June & July 2021 Public Engagement



Virtual Public Workshops

- June 14 at 5 PM — East Bay Focus (*Alameda & Contra Costa Counties*)
- June 30 at 12 PM — North Bay Focus (*Marin, Napa, Solano & Sonoma Counties*)
- June 17 at 12 PM — South Bay Focus (*Santa Clara County*)
- June 28 at 5 PM — West Bay Focus (*San Francisco & San Mateo Counties*)



Virtual Public Hearings

- June 11 at 9:30 AM (Draft Plan Document) & directly after (EIR)
- June 22 at 5:30 PM (Draft Plan Document) & 6:30 PM (EIR)
- July 7 at 1:30 PM (Draft Plan Document) & 2:30 PM (EIR)



Overview Videos
& Web Resources



Youth Events &
Video Challenge



Virtual Tribal
Summit

19

PLAN BAY AREA 2050

What's Next: Upcoming Public Comment Period



Draft Plan Bay Area 2050 is slated for public release by early June and will include:

- Draft Plan Document + Implementation Plan
- Draft Supplemental Reports
- Draft Environmental Impact Report

The public comment period will continue through mid-July - for more information on how to submit comments, go to planbayarea.org.

20

PLAN BAY AREA 2050