



# Alameda County Safe Routes to Schools Program Update and Contract Amendments



A presentation to the Alameda CTC Planning, Policy and Legislation Committee  
Denise Turner, SR2S Program Manager  
May 10, 2021

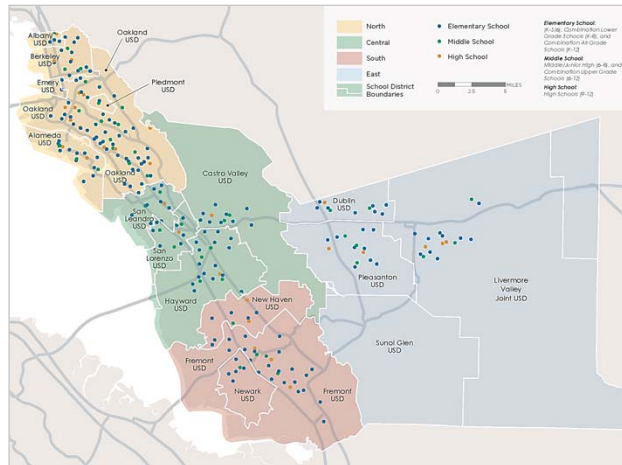
## Program Overview and Recommendations

- Program Background
- COVID-19 Impacts and Hybrid Return to In-Person Services
- Recommended Actions for FY21-22 Implementation



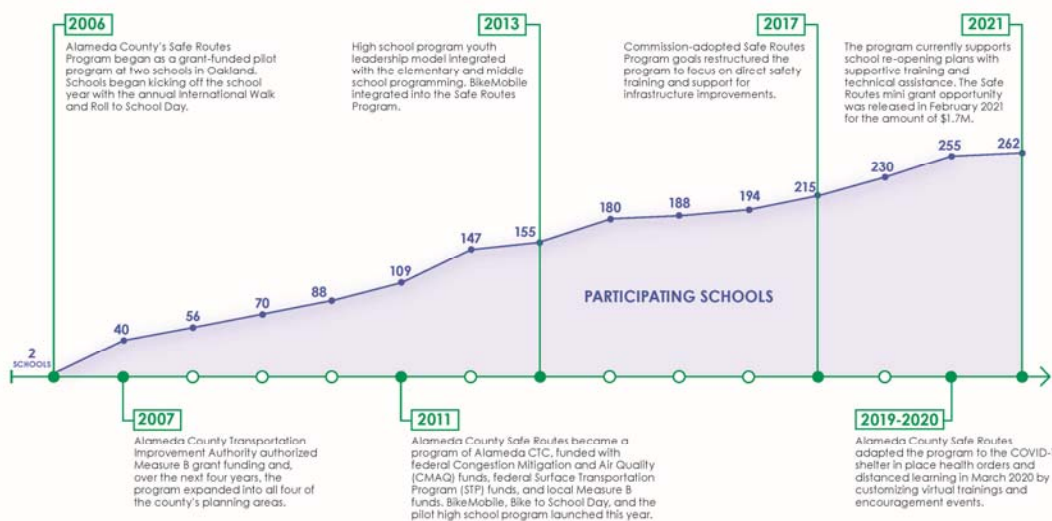
# Program Background

- A countywide program to promote and encourage safe walking, bicycling, carpooling and transit use for the trip to school
- Launched in 2006 at two schools, the program has grown to 262 schools to date



Alameda County Safe Routes to Schools: Golden Sneaker Contest

# Program Growth and Key Milestones



Alameda County Safe Routes to Schools: Golden Sneaker Contest

## Distanced Learning Key Findings

- **Virtual direct service trainings** found that pre-recordings more effectively met the critical timing needs of schools
- **Physical education virtual curriculum:** SR2S was a valued resource, and lessened limitations on indoor physical activity
- **Virtual assemblies** were a crowd favorite!
- SR2S is meeting with districts to support current on campus re-opening efforts, such as safe arrival and departure planning

Dublin Elementary School's Classroom



Virtual Safety Training



## Virtual Encouragement Event Outcomes

- **International Walk & Roll**
  - 126 participating schools
    - 2,047 student "passports" submitted
    - 96 student winners!
- **Golden Sneaker Contest:**
  - 62 participating schools
    - 303 classroom tally sheets collected
    - Counting over 7,575 students countywide
    - **Platinum Sneaker winning school:** Sunset Elementary, Livermore USD



# School Safety Assessments and Mini Grants

- Virtual School Safety Assessments (SSA)
  - Interactive map and survey
    - Increases access for public input
    - Available in multiple languages
    - Incorporated into on-site SSA's as schools re-open
- SR2S Mini-Grant
  - Aims to support jurisdictions with the implementation of SSA recommendations
    - Typical countermeasures being addressed:
      - ✓ Signage
      - ✓ Bike parking
      - ✓ Pavement & curb marking and lane striping



# Technical Assistance

- Technical assistance to schools and cities includes:
  - Suggested routes to school maps
  - Rolling drop-off tip sheets
  - Walking school bus/bike train re-imagined for physical distancing
  - Arrival and departure circulation maps and curb/stripping plans



# Background - Contracts

## SR2S PROGRAM PROFESSIONAL SERVICES CONTRACTS

1. Site Assessments, Data Collection, Analysis and Evaluation	2. Direct Student Safety Training	3. Implementation Support and Communications
<ul style="list-style-type: none"><li>✓ School safety assessments</li><li>✓ Program evaluation</li><li>✓ Data collection</li><li>✓ Data analysis</li><li>✓ Technical support</li><li>✓ Mapping</li></ul>	<ul style="list-style-type: none"><li>✓ Pedestrian education</li><li>✓ Bicyclist education</li><li>✓ BikeMobile</li><li>✓ Walk and Roll assemblies</li><li>✓ Educational videos</li></ul>	<ul style="list-style-type: none"><li>✓ School site support</li><li>✓ Walking school buses, bike trains and ongoing events</li><li>✓ Recruitment</li><li>✓ Encouragement events</li><li>✓ Outreach</li><li>✓ Communications</li></ul>



# Committee Action Recommendation

1. **Allocate** \$1.7 million of 2000 Measure B Discretionary Bicycle and Pedestrian funds required to complete the funding plan and implement year five of the program;
2. **Approve** Amendment No. 4 to Agreement No. A17-0075 with Alta Planning + Design, Inc. for an additional \$1,254,020 for a total not-to-exceed amount of \$5,408,778 for Direct Student Safety Training services and a one-year time extension through June 30, 2022;
3. **Approve** Amendment No. 5 to Agreement No. A17-0076 with Alta Planning + Design, Inc. for an additional \$523,747 for a total not-to-exceed amount of \$2,298,966 for School Site Assessments, Data Collection and Analysis and Program Evaluation services and a one-year time extension through June 30, 2022;
4. **Approve** Amendment No. 5 to Agreement No. A17-0077 with Toole Design Group, LLC, for an additional \$1,349,674 for a total not-to-exceed amount of \$5,878,425 for Education and Outreach services and a one-year time extension through June 30, 2022; and
5. **Authorize** the Executive Director or designee to execute amendments to the above listed professional services agreements.





# Thank You

For more information, visit

[www.AlamedaCTC.org](http://www.AlamedaCTC.org)

<https://alamedacountysr2s.org/>



Alameda County Transportation Commission • 1111 Broadway, Suite 800  
Oakland, CA 94607 • 510.208.7400

Alameda County Safe Routes to Schools: Golden Sneaker Contest