

I-880 INTERCHANGE IMPROVEMENTS
(WHIPPLE ROAD AND INDUSTRIAL PARKWAY)

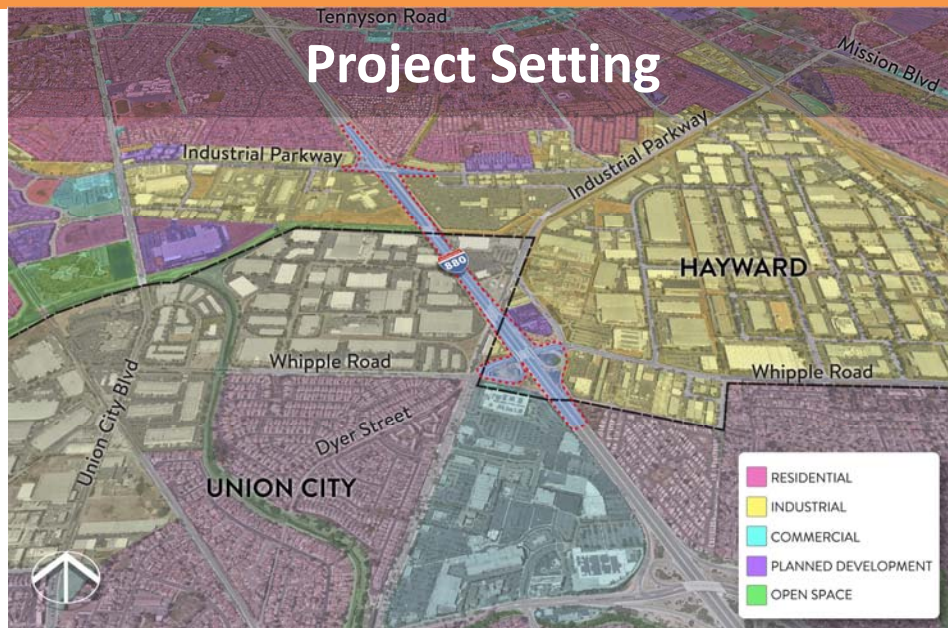


I-880 INTERCHANGE IMPROVEMENTS PROJECT

Whipple Road/Industrial Parkway Southwest Interchange
and
Industrial Parkway West Interchange

Alameda CTC BPAC
May 27, 2021

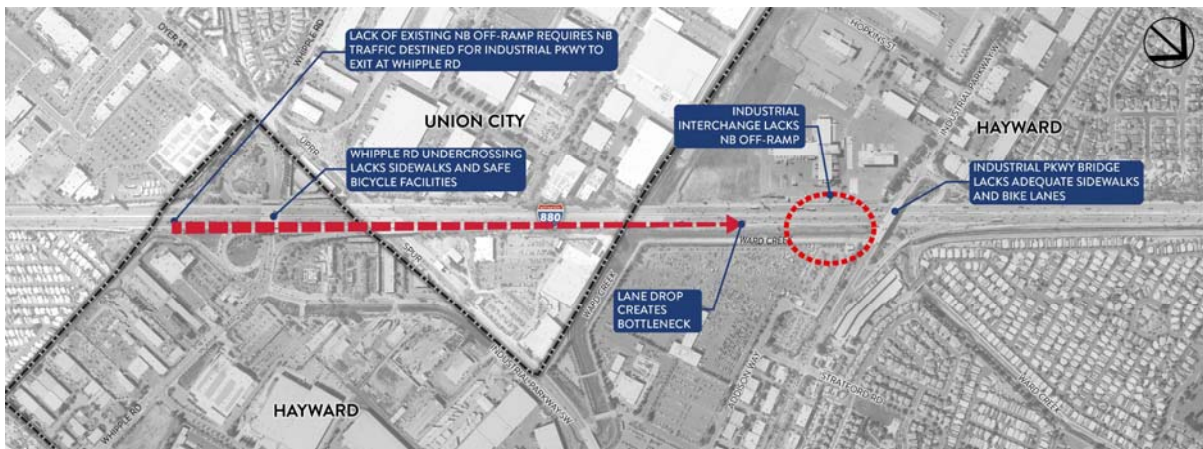
I-880 INTERCHANGE IMPROVEMENTS
(WHIPPLE ROAD AND INDUSTRIAL PARKWAY)



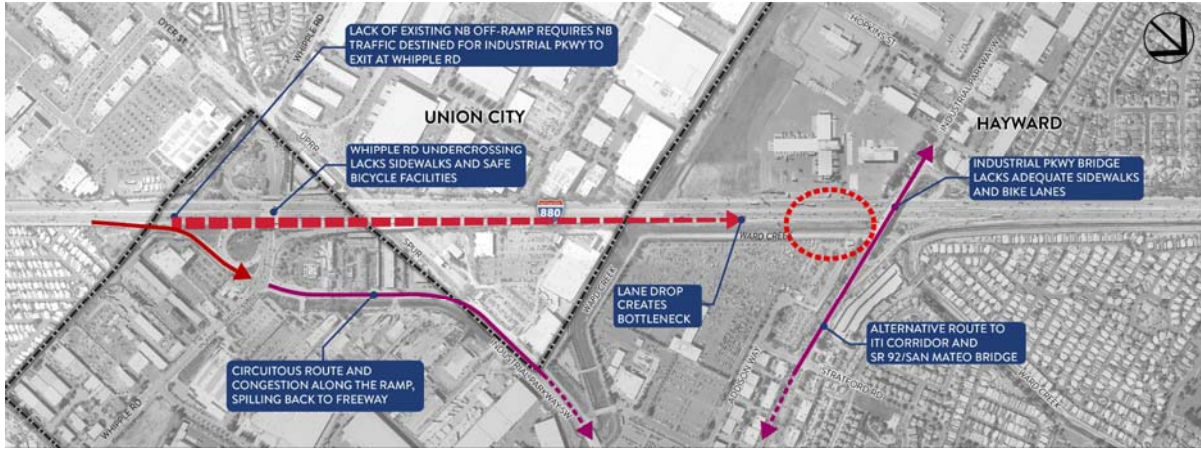
Project Challenges/ Existing Deficiencies



Project Challenges/ Existing Deficiencies



Project Challenges/ Existing Deficiencies



Project Challenges/ Existing Deficiencies



I-880 INTERCHANGE IMPROVEMENTS
(WHIPPLE ROAD AND INDUSTRIAL PARKWAY)



Project Purpose and Need

Purpose:

- Modernize interchanges and improve current and expected traffic operations by improving accessibility and enhancing mobility to the City of Hayward Industrial Technology and Innovation (ITI) Corridor.
- Complete the partial interchange at I-880/Industrial Parkway West to provide access to northbound I-880 traffic.
- Improve bicycle and pedestrian access through the I-880/Whipple Road-Industrial Parkway Southwest and I-880/Industrial Parkway West interchanges.

I-880 INTERCHANGE IMPROVEMENTS
(WHIPPLE ROAD AND INDUSTRIAL PARKWAY)

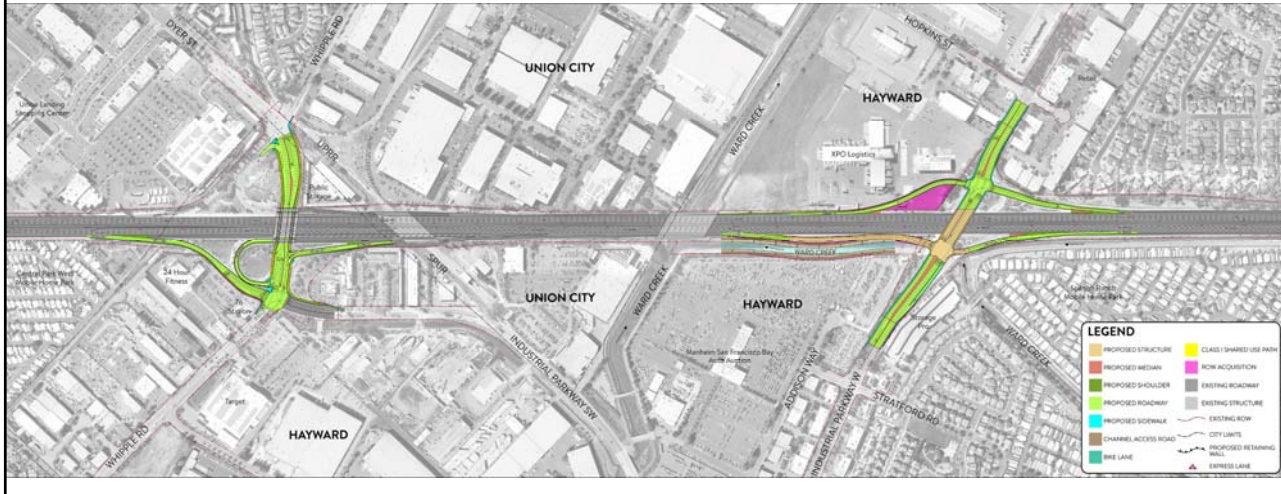


Project Alternatives

I-880 INTERCHANGE IMPROVEMENTS
(WHIPPLE ROAD AND INDUSTRIAL PARKWAY)



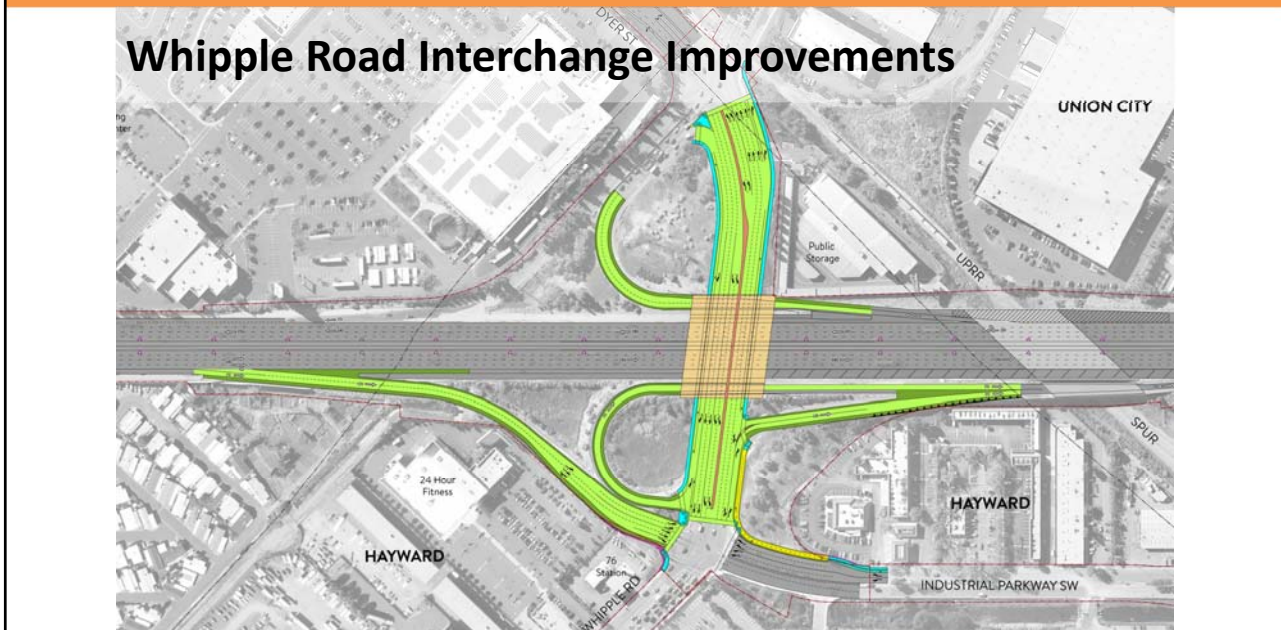
I-880 Whipple Road and Industrial Parkway Interchange Improvements



I-880 INTERCHANGE IMPROVEMENTS
(WHIPPLE ROAD AND INDUSTRIAL PARKWAY)



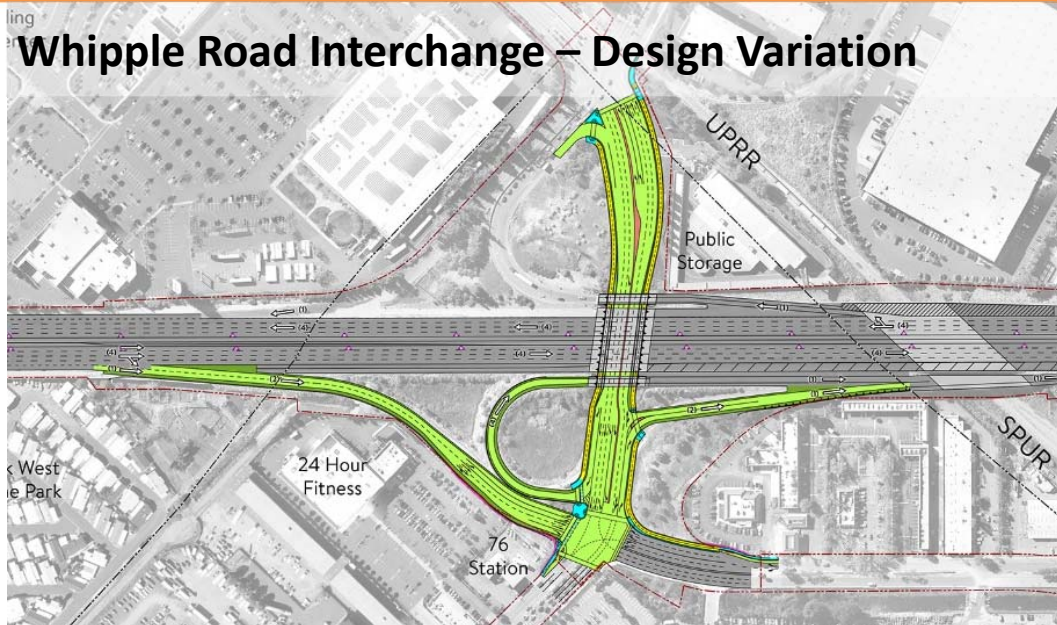
Whipple Road Interchange Improvements



I-880 INTERCHANGE IMPROVEMENTS
(WHIPPLE ROAD AND INDUSTRIAL PARKWAY)



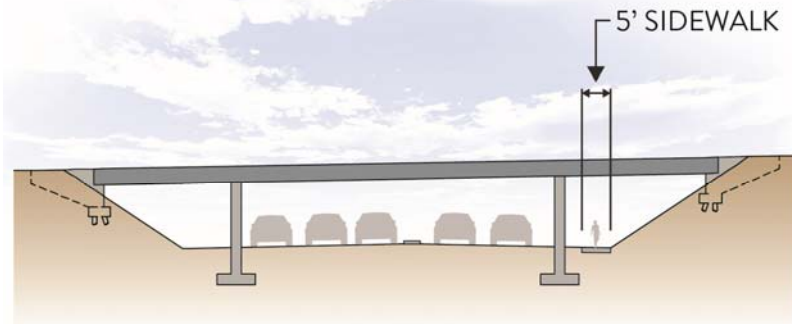
Whipple Road Interchange – Design Variation



I-880 INTERCHANGE IMPROVEMENTS
(WHIPPLE ROAD AND INDUSTRIAL PARKWAY)



Whipple Road Bike and Pedestrian Accommodation - Existing

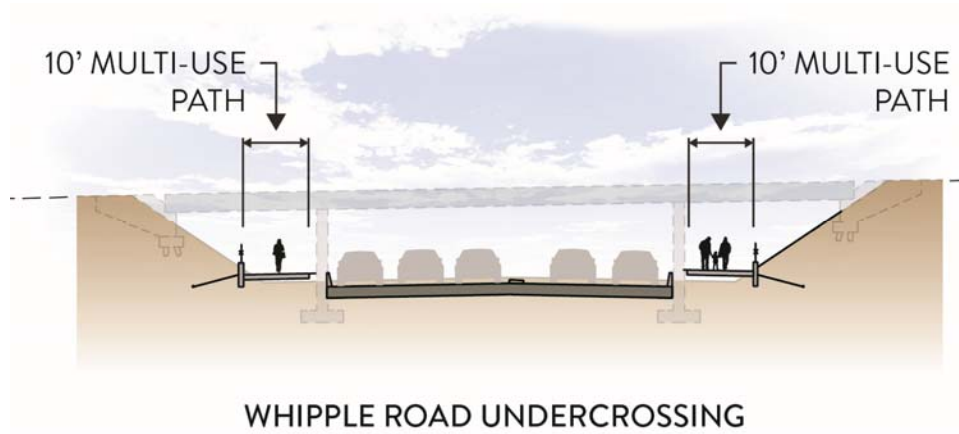


WHIPPLE ROAD UNDERCROSSING

I-880 INTERCHANGE IMPROVEMENTS
(WHIPPLE ROAD AND INDUSTRIAL PARKWAY)



Whipple Road Bike and Pedestrian Accommodation – Option 1



I-880 INTERCHANGE IMPROVEMENTS
(WHIPPLE ROAD AND INDUSTRIAL PARKWAY)



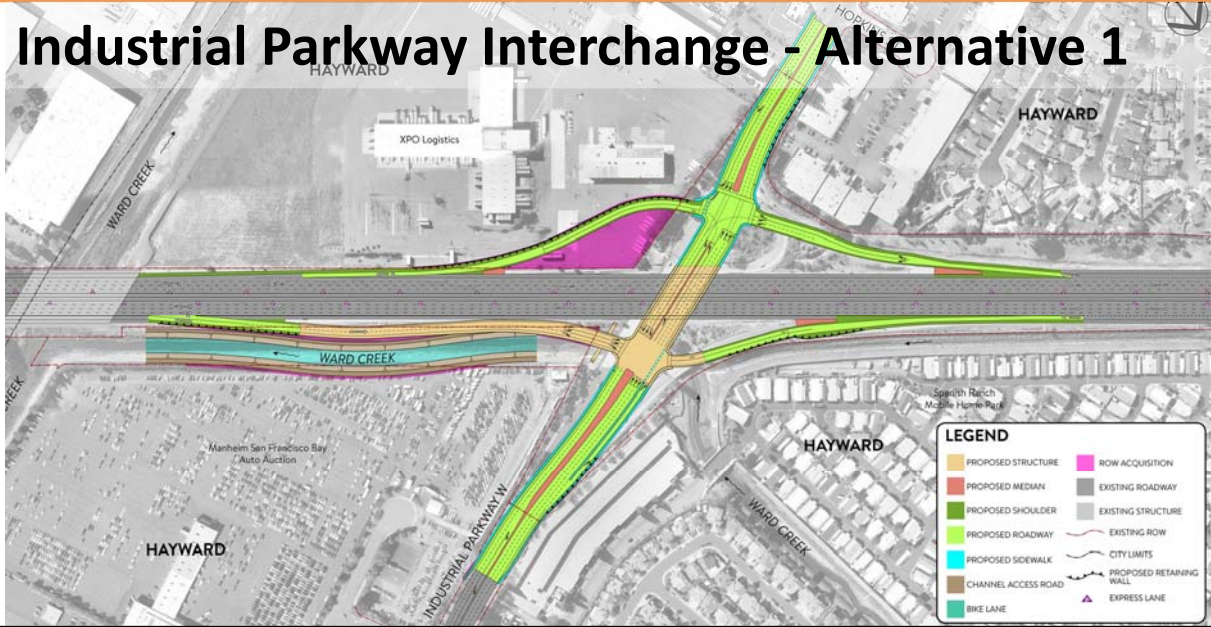
Whipple Road Bike and Pedestrian Accommodation – Option 2



I-880 INTERCHANGE IMPROVEMENTS
(WHIPPLE ROAD AND INDUSTRIAL PARKWAY)



Industrial Parkway Interchange - Alternative 1



I-880 INTERCHANGE IMPROVEMENTS
(WHIPPLE ROAD AND INDUSTRIAL PARKWAY)



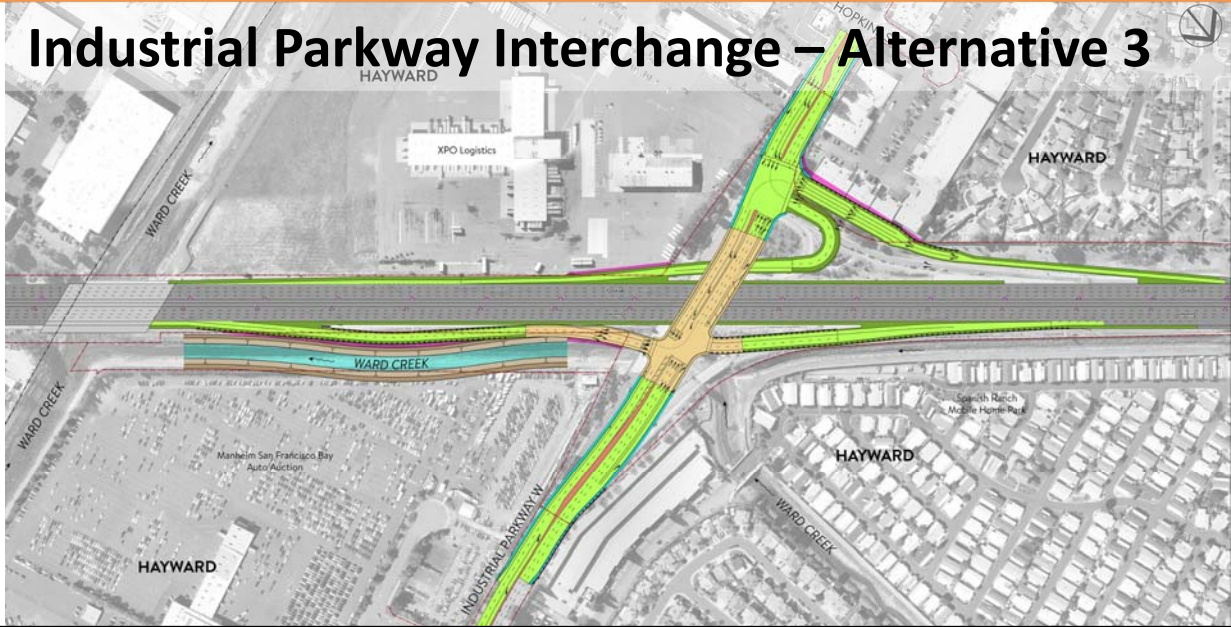
Industrial Parkway Interchange - Alternative 2



I-880 INTERCHANGE IMPROVEMENTS
(WHIPPLE ROAD AND INDUSTRIAL PARKWAY)



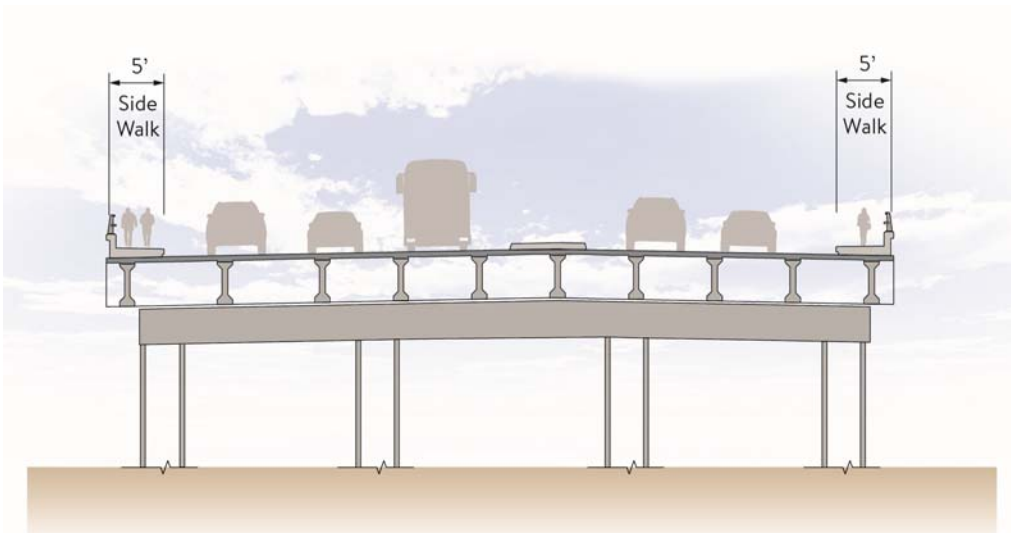
Industrial Parkway Interchange – Alternative 3



I-880 INTERCHANGE IMPROVEMENTS
(WHIPPLE ROAD AND INDUSTRIAL PARKWAY)



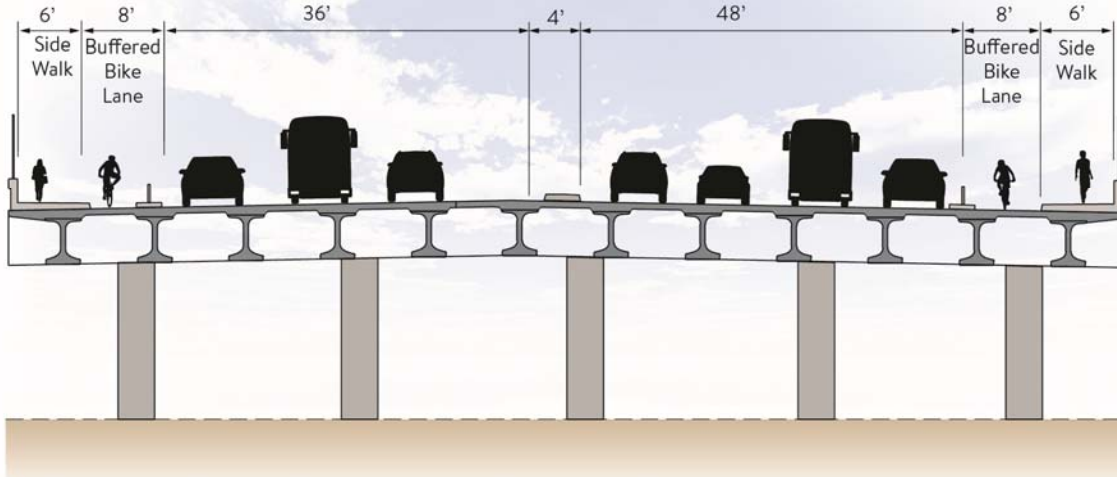
Industrial Parkway Bike and Pedestrian Accommodation – Existing



I-880 INTERCHANGE IMPROVEMENTS
(WHIPPLE ROAD AND INDUSTRIAL PARKWAY)



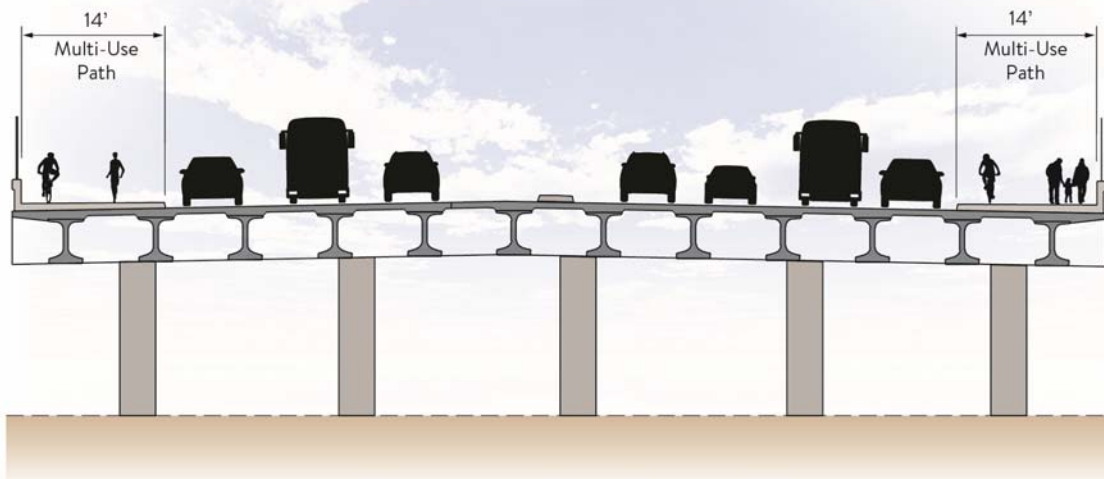
Industrial Parkway Bike and Pedestrian Accommodation – Option 1



I-880 INTERCHANGE IMPROVEMENTS
(WHIPPLE ROAD AND INDUSTRIAL PARKWAY)



Industrial Parkway Bike and Pedestrian Accommodation – Option 2



I-880 INTERCHANGE IMPROVEMENTS
(WHIPPLE ROAD AND INDUSTRIAL PARKWAY)



Project Milestone Schedule

Project Milestone	Scheduled Delivery Date
Approval of PSR-PDS	Completed August 2018
Scoping Meeting	January 23, 2019
DED Circulation for public review/comments & Public Meeting	January 2021-March 2021
Complete PA/ED	Fall 2021
Begin Detailed Design (PS&E) & Right of Way Acquisition	Fall 2021 (*)
Complete PS&E and Right of Certification	Summer 2023 (*)
Begin Construction	Spring 2024 (*)
End Construction	2027 (*)

(*) Subject to change depending on funding availability

I-880 INTERCHANGE IMPROVEMENTS
(WHIPPLE ROAD AND INDUSTRIAL PARKWAY)



Questions?

This page intentionally left blank