



**DUBLIN**  
CALIFORNIA

**Bicycle and Pedestrian  
Master Plan Update  
Alameda CTC BPAC**

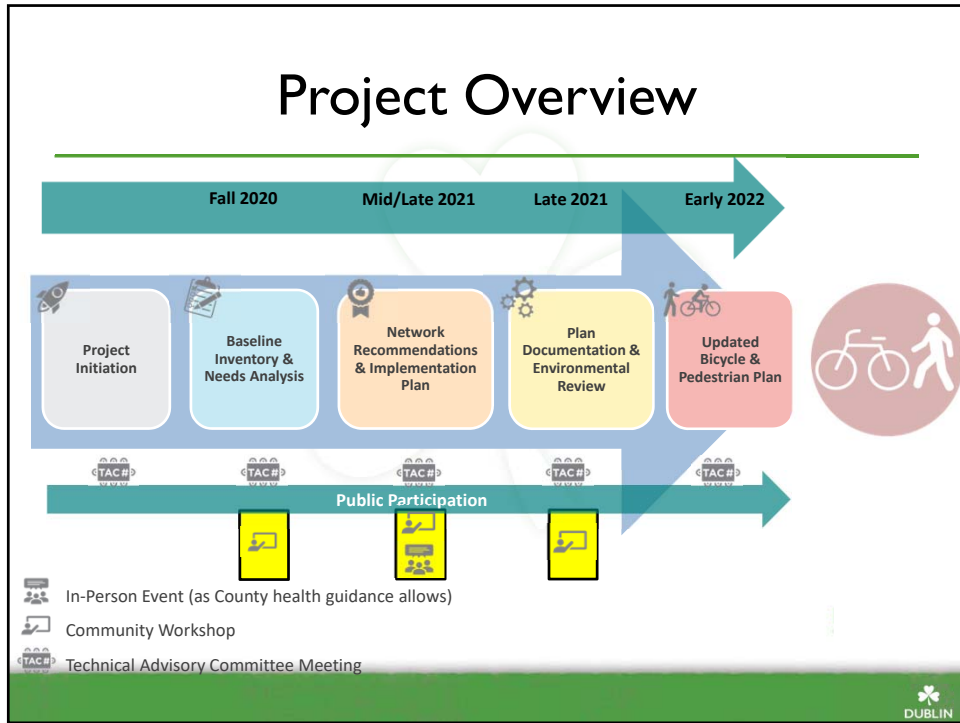
Thursday, May 27, 2021  
5:30 pm

## Agenda

---

- 1. Project Overview**
2. Community Engagement
3. Program & Policy Recommendations
4. Prioritization
5. Next Steps





## Previously we presented....

Analysis Task	Status	To Be Used in:
Demographic	Complete	Prioritization analysis, demand analysis
Collision	Complete	Prioritization analysis, network recommendations, general design recommendations
Level of Traffic Stress	Complete	Prioritization analysis, network recommendations, Plan document
Programs and Policies	Complete	Program and policy recommendations
Demand Analysis	Pending	Prioritization analysis, Plan documentation

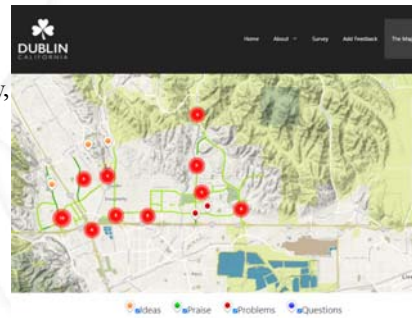
# Agenda

1. Project Overview
- 2. Community Engagement**
3. Program & Policy Recommendations
4. Prioritization
5. Next Steps



# Project Website

- Project Website
  - <http://dublinbikeped.org/>
  - 121 responses (88 unique respondents) received through Friday, 5/21
- We have updated the site to include more project information
  - Vision and goals
  - Project fact sheet
  - Analysis and deliverables
  - Online survey



## Recent and Upcoming Events

- Stakeholder listening session - Chamber of Commerce
- Pop-up at Alamo Creek trailhead Saturday, 5/22
- Farmer's Market pop-up earlier today
  - Poster activities to gather feedback
  - Project fact sheet to promote web site
  - Project survey (paper and digital)
- Project TAC meeting Thursday, 6/3
- Future events to be scheduled



## Agenda

1. Project Overview
2. Community Engagement
- 3. Program & Policy Recommendations**
4. Prioritization
5. Next Steps

## Policy and Program Recommendations

---

- **Please refer to handout.**
- Topic areas:
  - Coordination
  - Data Collection
  - Design
  - Emerging Technologies
  - Funding and Implementation
  - Supporting Infrastructure
  - Transportation Demand Management



## Policy and Program Recommendations

---

- Our questions to you:
  - Do you see any gaps? (topics or specific recommendations)
  - Can you share best practice examples?
    - Topic areas
    - Recommended strategies or actions



# Agenda

1. Project Overview
2. Community Engagement
3. Program & Policy Recommendations
- 4. Prioritization**
5. Next Steps



## Prioritization Framework

- **Please refer to handout.**
- Prioritization factors below
- Next steps: Select factor weights

Factor	Variables
Safety	High-injury corridors
Social Equity	Youth and senior populations
Connectivity	Demand analysis
	Proximity to schools
Quality of service	Bicycle level of traffic stress
Major barriers	Freeway crossings
Consistency with past planning	Previously identified projects not completed

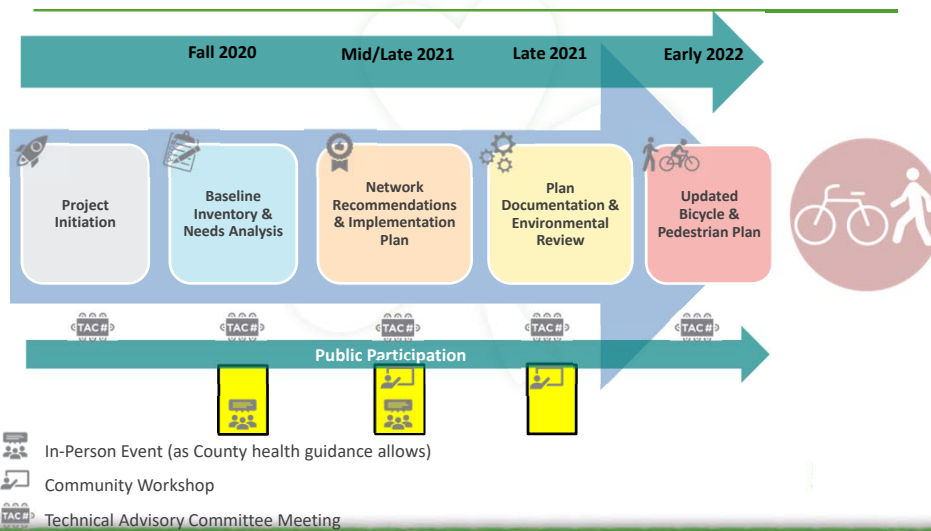


# Agenda

1. Project Overview
2. Community Engagement
3. Program & Policy Recommendations
4. Prioritization
- 5. Next Steps**



# Next Steps



## Next Steps

---

1. Finalize demand analysis for prioritization inputs
2. Determine prioritization inputs and factor weights
3. Solicit public input
4. Prepare network recommendations



## We'd Love Your Feedback On..

---

1. Program and policy recommendations (handout pp. 1-5)
2. Prioritization inputs and factor weightings (handout memo)
3. Anything else we presented!





# Thank you!

---

Follow-up Questions/Comments

**Sai Midididdi:**

[Sai.Midididdi@dublin.ca.gov](mailto:Sai.Midididdi@dublin.ca.gov)

**Project website:**

<http://dublinbikeped.org>



## Demand Analysis

---

- Measure walking and biking access to activity centers based on infrastructure
  - BART stations, job centers, parks, schools
- Test existing versus proposed network to capture potential for mode shift
- Upcoming working session with City staff and BART, school district, Parks & Community Services to discuss analysis results
- Identified barriers will feed into prioritization



# Demand Analysis



Figure  
Neighborhood Park - "Strong and Fearless"  
Network Service Area  
Dublin, California



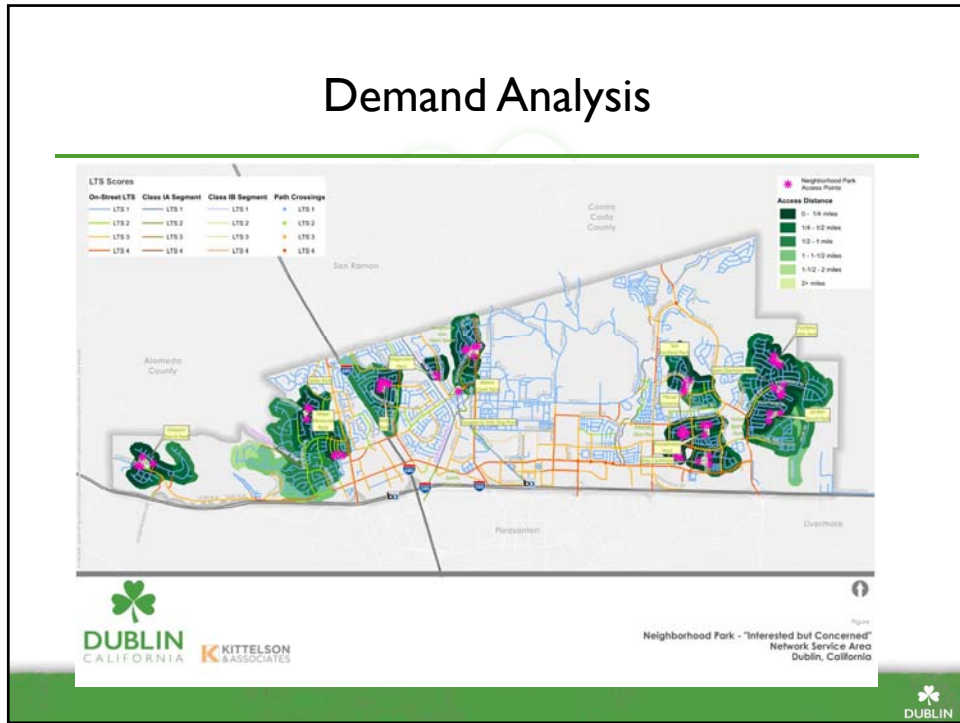
# Demand Analysis



Figure  
Neighborhood Park - "Enthusied and Confident"  
Network Service Area  
Dublin, California



# Demand Analysis



*This page intentionally left blank*