

# Alameda County COVID-19 Vaccine Update

*Alameda County Transportation  
Commission*

Aneeka Chaudhry, HCSA Asst. Director  
Dr. Tri Do, Vaccine Clinical Consultant  
Benjamin Chen, Disabilities Coordinator

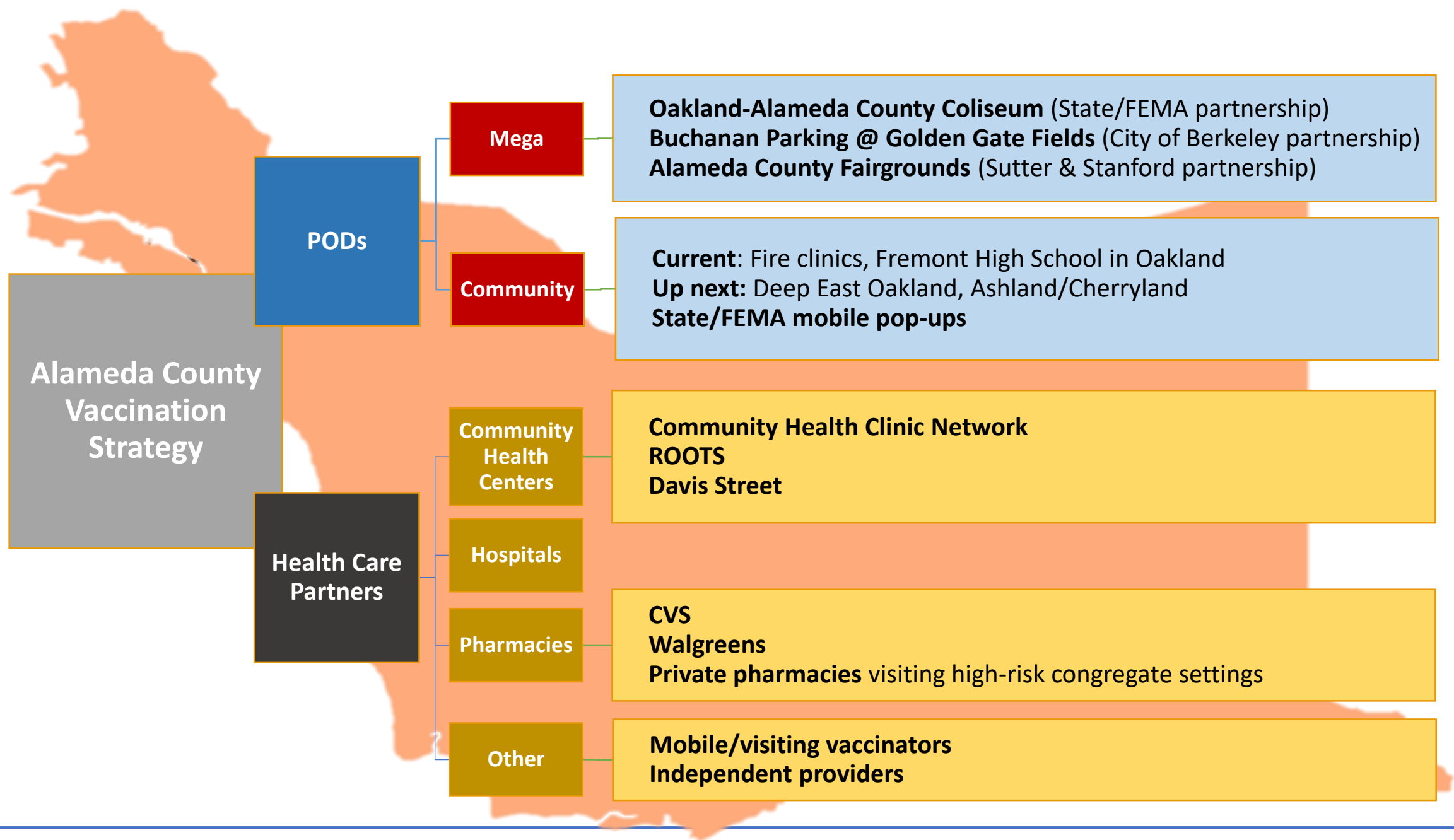
March 25, 2021



Alameda County  
Health Care Services Agency



Alameda County Public Health Department  
Celebrating Healthy People in Healthy Communities



# Countywide vaccination data

(as of 3.24.21)

% ≥ 16 Years with at Least One Dose

34.1%

See Counts

See Percentages

% ≥ 16 Years Fully Vaccinated

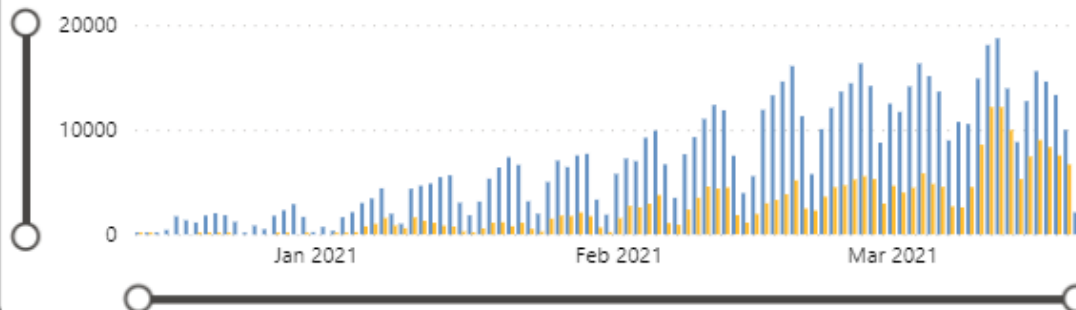
18.6%

Doses Received by the County

Alameda County Vaccine Doses Administered by Dose Type by Day

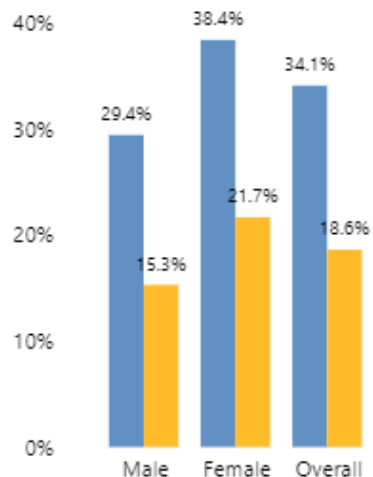
At Least One Dose Fully Vaccinated

Data from last five days especially subject to change.



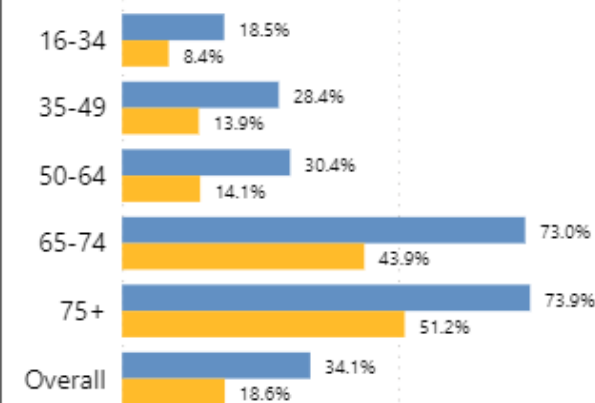
Doses by Gender (% of population ≥ 16 years)

At Least One Dose Fully Vaccinated



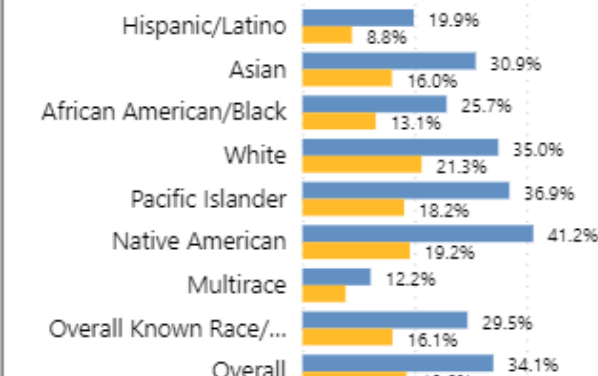
Doses by Age Group (% of population)

At Least One Dose Fully Vaccinated



Doses by Race/Ethnicity (% of population ≥ 16 Years)

At Least One Dose Fully Vaccinated



% of population ≥ 16 Years

| Place               | At Least One Dose | Fully Vaccinated |
|---------------------|-------------------|------------------|
| Alameda             | 39.6%             | 22.1%            |
| Albany              | 42.5%             | 23.6%            |
| Ashland             | 26.3%             | 12.1%            |
| Berkeley            | 36.5%             | 21.4%            |
| Castro Valley       | 39.8%             | 22.7%            |
| Cherryland          | 27.0%             | 13.8%            |
| Dublin              | 27.3%             | 14.5%            |
| Emeryville          | 30.8%             | 16.0%            |
| Fairview            | 37.3%             | 21.2%            |
| Fremont             | 29.9%             | 16.6%            |
| Hayward             | 32.5%             | 16.6%            |
| Hayward Acres       | 23.2%             | 11.3%            |
| Livermore           | 32.3%             | 19.2%            |
| Newark              | 30.4%             | 16.1%            |
| Oakland             | 34.7%             | 18.1%            |
| Piedmont            | 52.7%             | 32.8%            |
| Pleasanton          | 35.4%             | 21.4%            |
| Remainder of County | 34.5%             | 20.5%            |
| San Leandro         | 38.0%             | 19.0%            |
| San Lorenzo         | 37.2%             | 18.5%            |
| Sunol               | 43.9%             | 25.2%            |
| Union City          | 37.2%             | 20.8%            |





# Alameda County COVID-19 Vaccination Framework

**Currently  
Vaccinating\***  
*as supply permits*

- Healthcare workers
- High risk congregate settings
- People aged 65+
- Food/Agriculture/Restaurant/Grocery workers
- Emergency Services workers
- Education/Childcare workers
- People aged 16-64 with high-risk medical conditions and disabilities
- Public transit workers, janitors, utility workers
- People experiencing homelessness



**Priority  
Groups**

- Older adults
- MediCal or Uninsured
- Areas with very high COVID-19 case rates (HPI Q1 + priority zip codes)
- People with direct contact with clients or the public at work
- People who cannot work from home
- People with limited mobility



*\* Alameda County is aligned with state guidance; for details please see:*  
[COVID-19 vaccination page](#) & [Essential Workforce definitions](#) & [Provider Bulletin, 3/11/21](#) & [High-risk conditions factsheet](#)



# Vaccine availability

**All three safe and highly effective vaccines are available in Alameda County:**

- Pfizer, Moderna—2 doses
- Johnson & Johnson—1 dose

## County PODs:

- Sign up to be notified through the Alameda County Residents form on our vaccines webpage: <https://covid-19.acgov.org/vaccines>
- Call **510-208-4VAX** if you need help or do not have access to internet

**Coliseum:** [myturn.ca.gov](https://myturn.ca.gov) or call (833) 422-4255

**Health care partners:** Kaiser, Sutter Health, Stanford Health, Community Clinics, CVS, Walgreens



# Strategies: Low-Mobility 65+ and 16-64 with Underlying Conditions

*As of March 2021, all residents and staff of Long-Term Care Facilities and most Senior Housing locations have been offered the vaccine. Efforts are under way to vaccinate patients at dialysis centers.*

## Next steps:

1. Identifying and reaching out to people who
  - (a) have limited mobility and need transportation support or a visit from a mobile vaccinator, and
  - (b) may not have digital access to find appointments. Can call 510-208-4VAX
  - (c) Community outreach:
    - Faith- and Community-Based organizations
    - PACE providers (CEI and On Lok)
    - EMS data: Example = calls from people over 65 in private residences for falls from bed, chair, wheelchair, furniture, toilet, bathtub
    - Meal providers, providers, insurers
2. Central place to track requests from low-mobility individuals through county website now live





# Strategies: Low-Mobility 65+ and 16-64 with Underlying Conditions

3. Identifying mobile vaccine and transportation providers
  - Pharmacy partners
  - Request for Qualification (RFQ) (Release pending/March 2021) for additional home vaccinators such as home health agencies
  - Partnerships with paratransit agencies (info now live on county vaccine website)





## Strategies: Low-Mobility 65+ and 16-64 with Underlying Conditions

3. Identifying mobile vaccine and transportation providers, *continued*
  - Working with Faith-Based Organizations and EMS to identify homebound seniors to be vaccinated by pharmacy partners
  - Growing list of organizations that want to host
  - Pop-ups
    - Hayward with pharmacy partner week of 3/29
    - Beth Eden church pilot POD for homebound congregants pending



# Challenges to Address

- Lowering the barrier for Paratransit for vaccine visits
  - Auto-qualification based on age
  - Single ride for vaccination visit
- Scaling up call center operations
- Scaling up mobile vaccine partnerships and logistics
  - In home vaccination for bedbound



# Discussion

