



ALAMEDA  
County Transportation  
Commission

ALAMEDA COUNTY TRANSPORTATION COMMISSION

# 2020 Performance Report

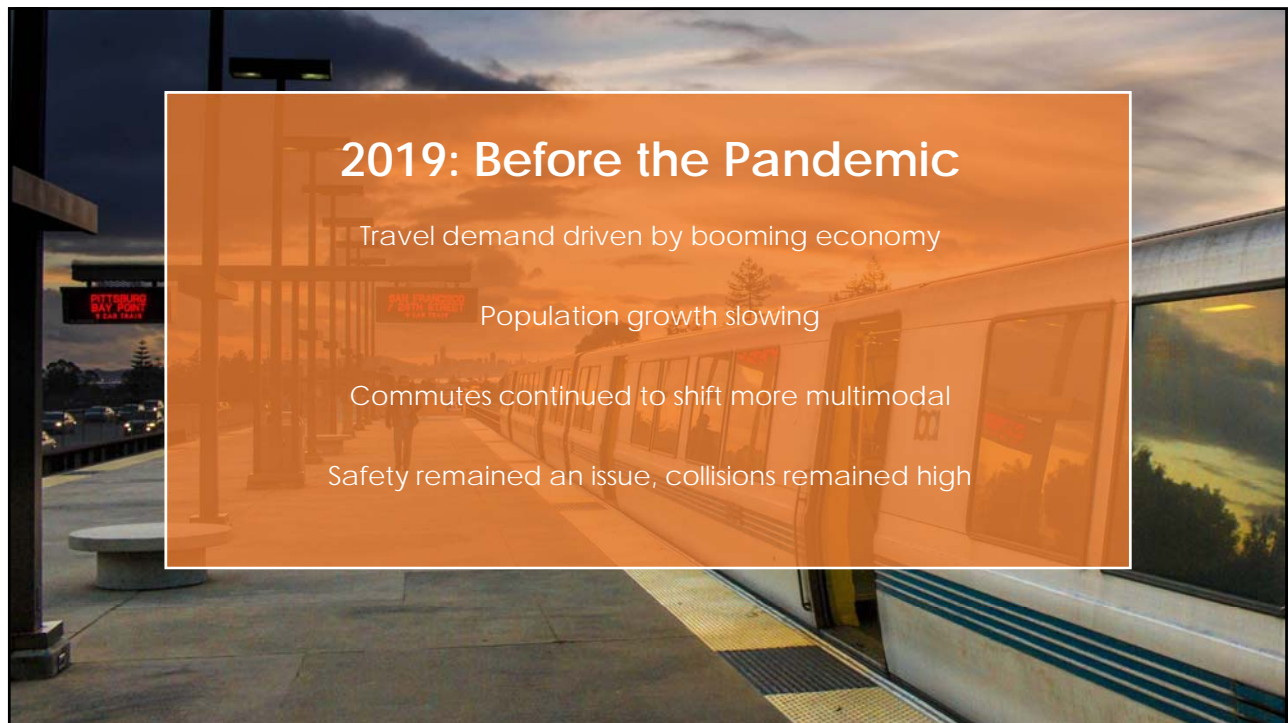
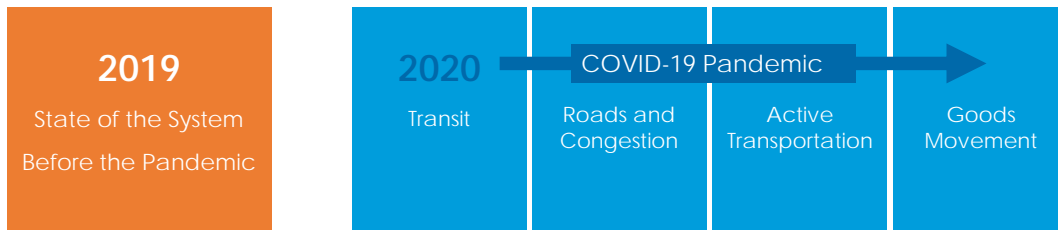


A presentation to the Alameda County Transportation Commission  
Chris G. Marks, Transportation Planner, Alameda CTC  
February 25, 2020

## About this Report

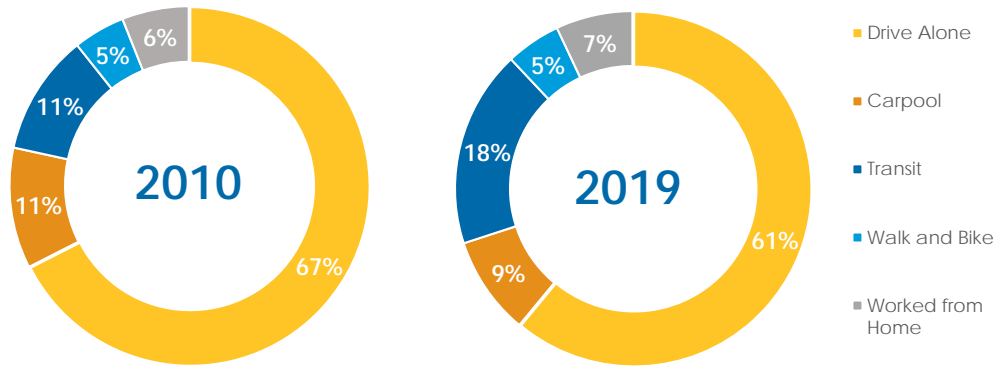
- The purpose of annual reporting:
  - Elucidate trends, highlight changes, provide important data to inform policy and decision-making throughout the agency
  - Meets legislative requirement
- 2020 Report does not follow usual data methodologies
- Provides most current data/trend analysis on: active transportation, autos, transit, and goods movement
- Full Report available on website

# 2020 Performance Report





## Commuters continued to choose transit

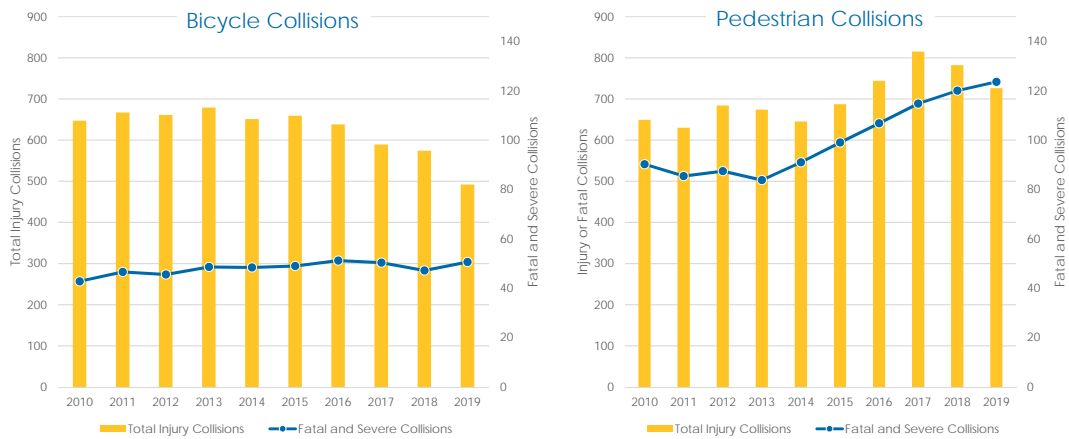


Sources: American Community Survey 1-year Estimate, 2010, 2017

State of the System

7

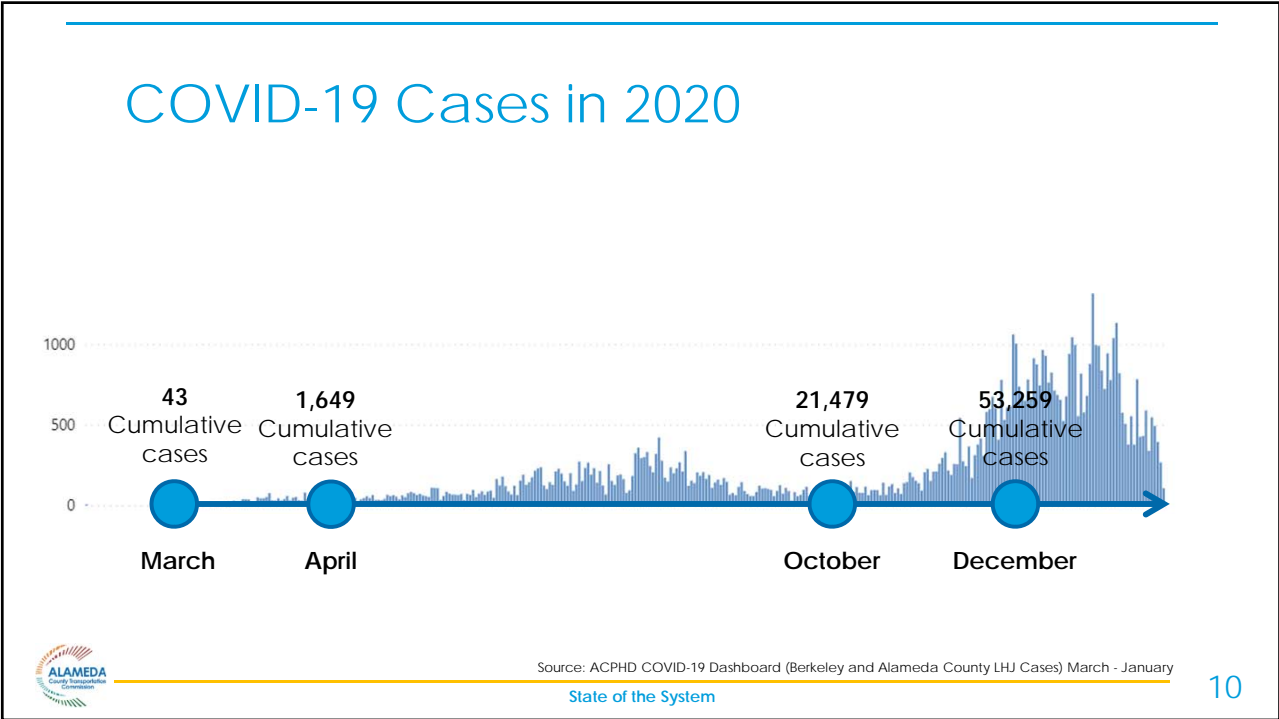
## Safety still a concern



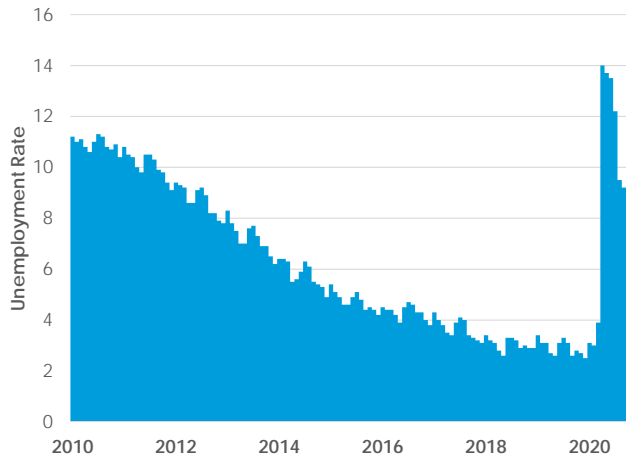
Sources: Traffic Injury Mapping System (2010 – 2019(provisional))

State of the System

8



# Historic Rise in Unemployment

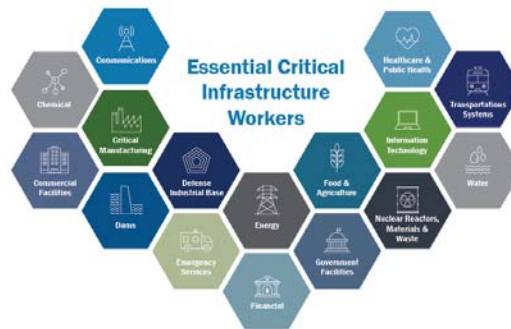
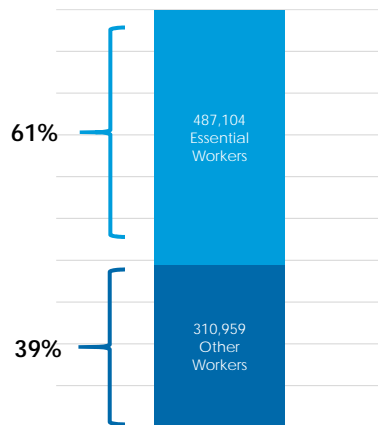


- December 2019: 2.5%
- April 2020: 14.0%
- October 2020: 7.6%



Source: Bureau of Labor Statistics, Local Area Unemployment, Alameda County, January 2010 – November (P).

# Essential Workers and Telecommuting in Alameda County

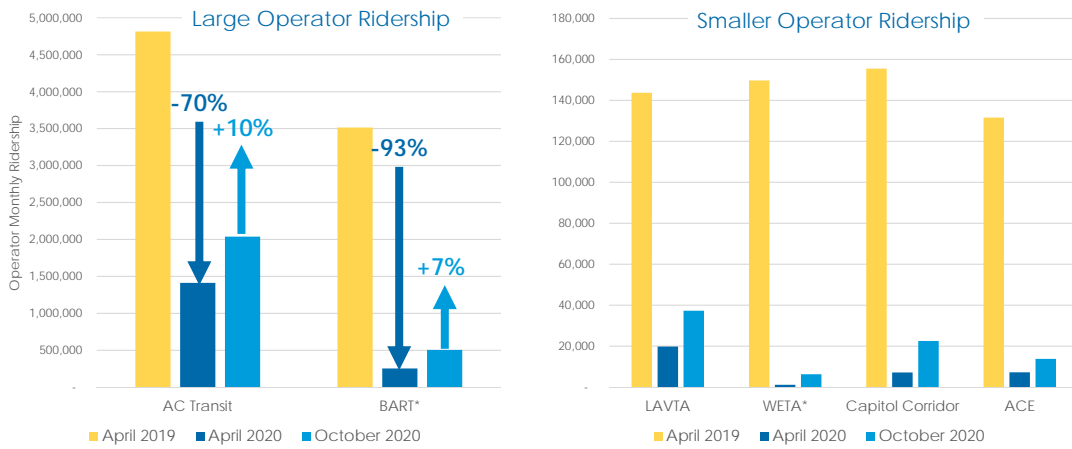


Sources: Bureau of Labor Statistics, Quarterly Census of Employment and Wages Q1, 2020; Graphic Source: Department of Homeland Security





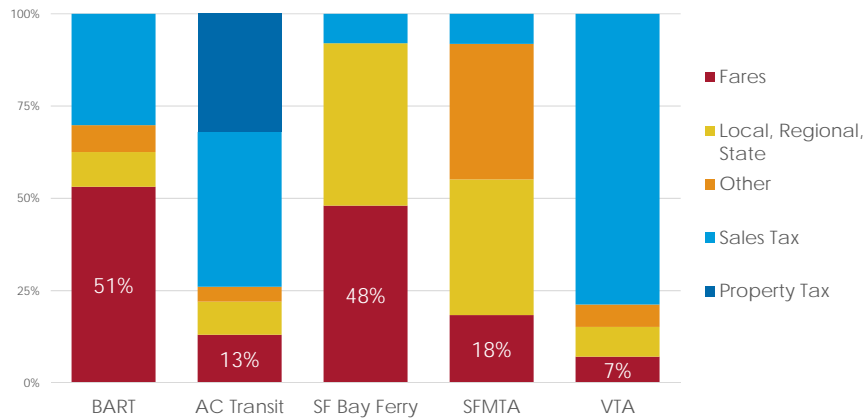
## Transit Ridership down more than 90%



Data are systemwide, unless denoted with \*

Sources: Ridership Reported by Operator

## Loss of fare revenue hurting operators



Source: AC Transit

State of the System

15

## Recovery, Adaptation, and Relief

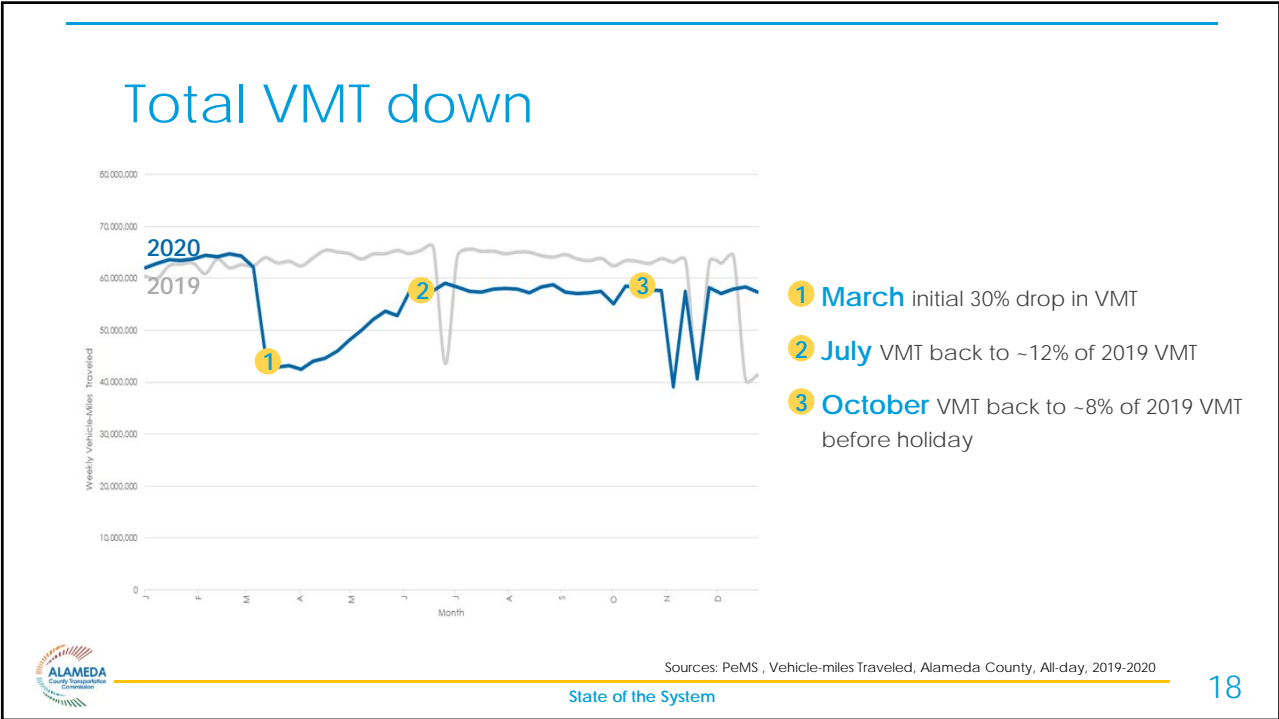
- CARES/CRRSAA
- Blue Ribbon Transit Recovery Task Force
- Bay Area Healthy Transit Plan
- Operators have quickly taken action



State of the System

16







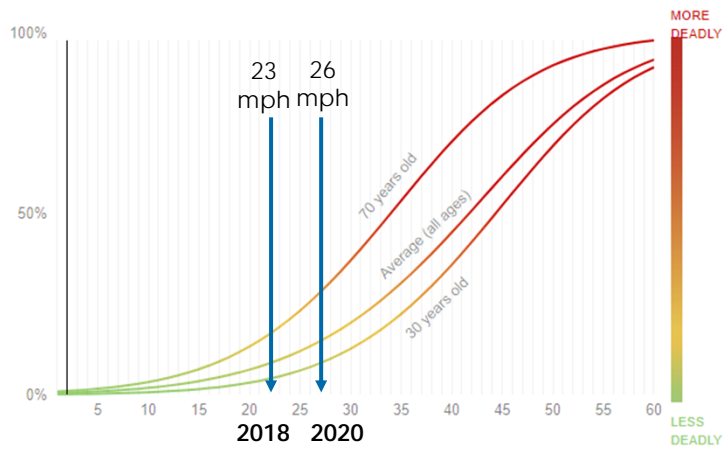
## Post-Pandemic Freeway Congestion (Fall 2020 Peak-periods)



Sources: Alameda CTC CMP Monitoring Report, 2018, 2020 AM/PM LOS-F

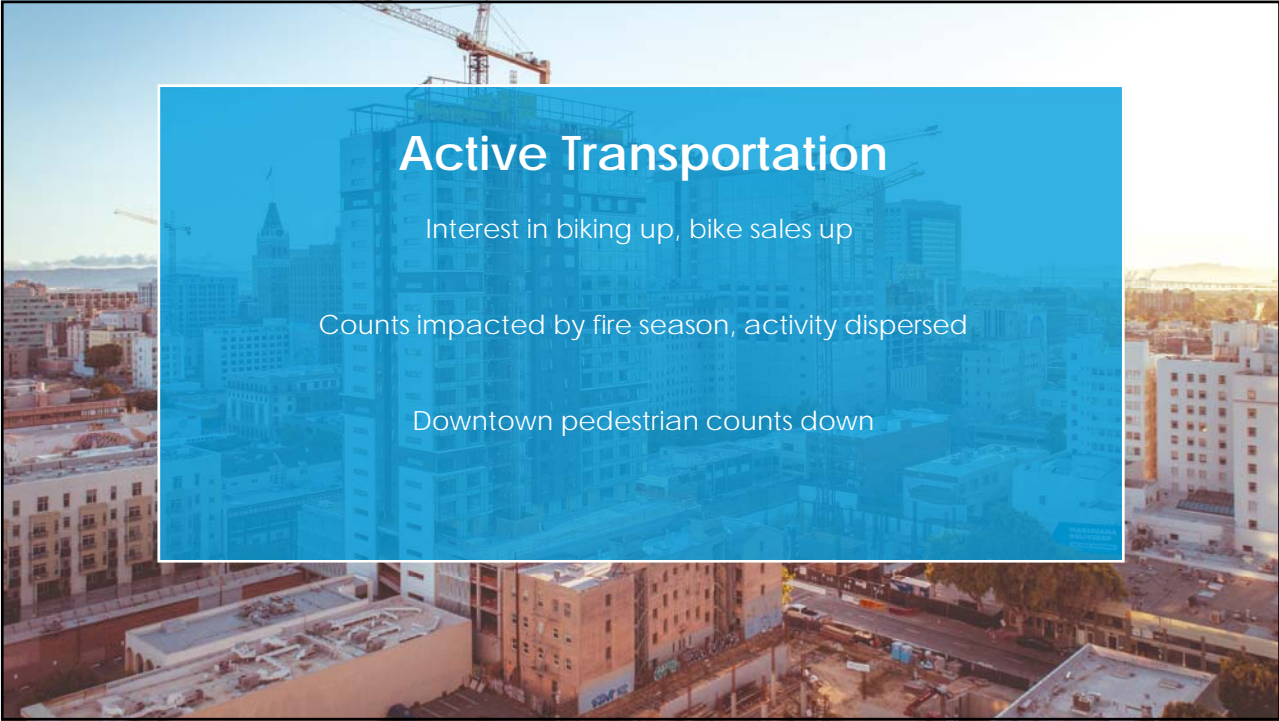
State of the System

## Higher Travel Speeds - concern for Safety

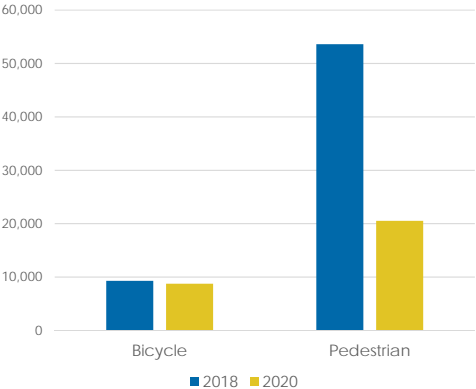


Sources: AAA Foundation for Traffic Safety, Impact Speed and a Pedestrian's Risk of Severe Injury or Death. September 2011, graph by ProPublica

State of the System



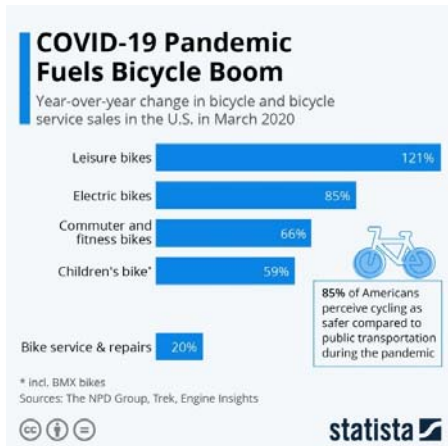
# Bike and Ped Counts



- Fall Bike/Ped counts at 150 locations, mostly activity centers
- Total Bike volume down 6%
  - Large declines at high volume locations (downtown Oakland, near UC Berkeley)
  - Many count locations up
- Total Pedestrian volume down 62%
  - Largest declines in downtown areas



## Mixed data on bike use



- Activity may be more diffuse
- Impact from historic wildfire season
- Trip purpose changing
- Bike sales up significantly



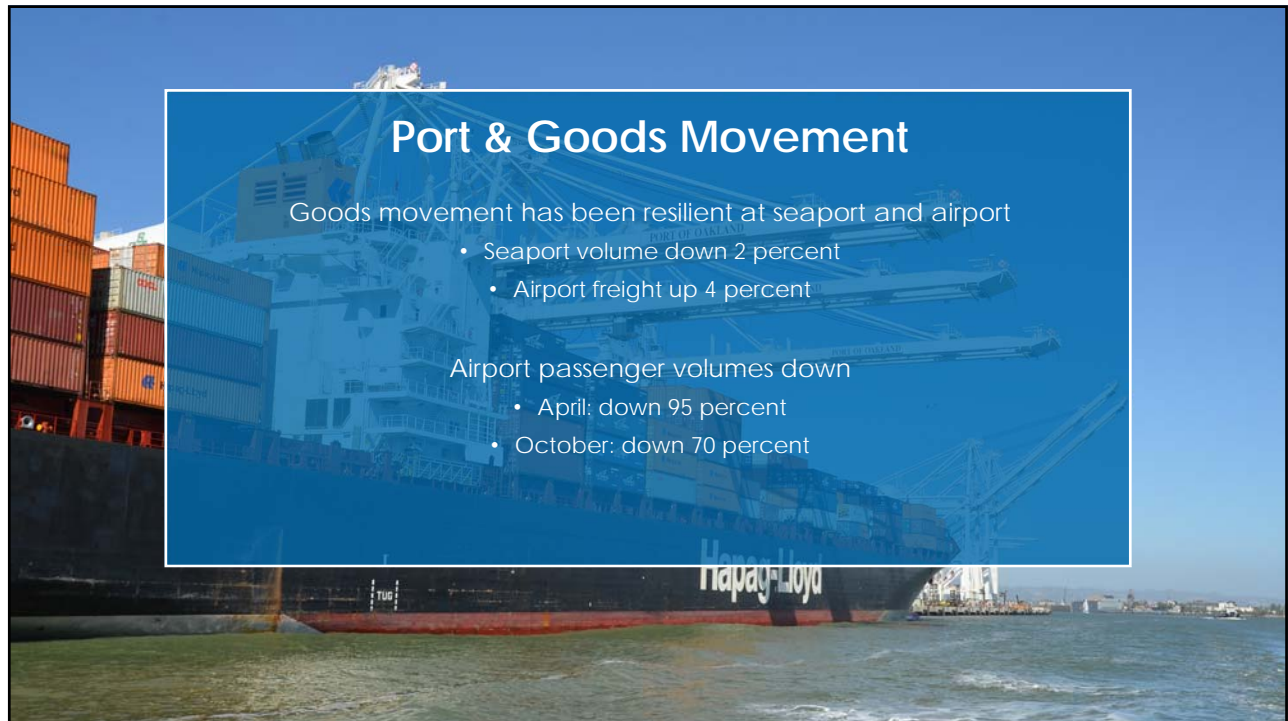
## Port & Goods Movement

Goods movement has been resilient at seaport and airport

- Seaport volume down 2 percent
- Airport freight up 4 percent

Airport passenger volumes down

- April: down 95 percent
- October: down 70 percent



## Plan:

- Modal Plans
- Countywide Transportation Plan
- High-injury Network
- Community Based Transportation Plans

## Fund:

- CIP Call for Projects: Transit & Active Trans. Projects
- Rapid Response COVID-19 Bike/Ped Grant

## Deliver:

- Advocate for legislative agenda
- Multimodal Corridor Projects
- East Bay Greenway
- Multimodal Interchange projects



# Thank You!

