



ALAMEDA COUNTY TRANSPORTATION COMMISSION

# 2020 Performance Report

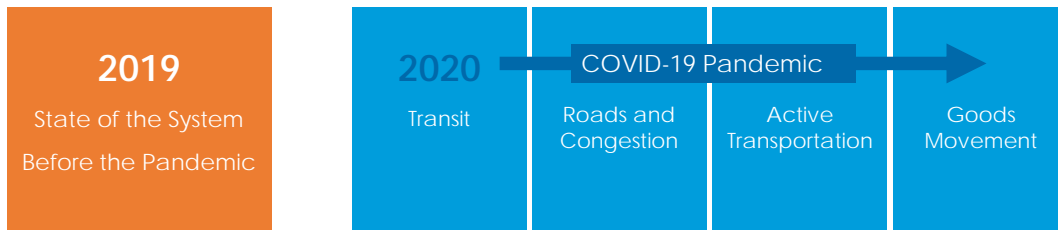



A presentation to the Planning, Policy, and Legislation Committee  
 Chris G. Marks, Transportation Planner, Alameda CTC  
 February 8, 2020

## About this Report

- The purposed of annual reporting:
  - Elucidate trends, highlight changes, provide important data to inform policy and decision-making throughout the agency
  - Meets legislative requirement
- 2020 Report does not follow usual data methodologies
- Provides most current data/trend analysis on: active transportation, autos, transit, and goods movement
- Full Report available on website

# 2020 Performance Report



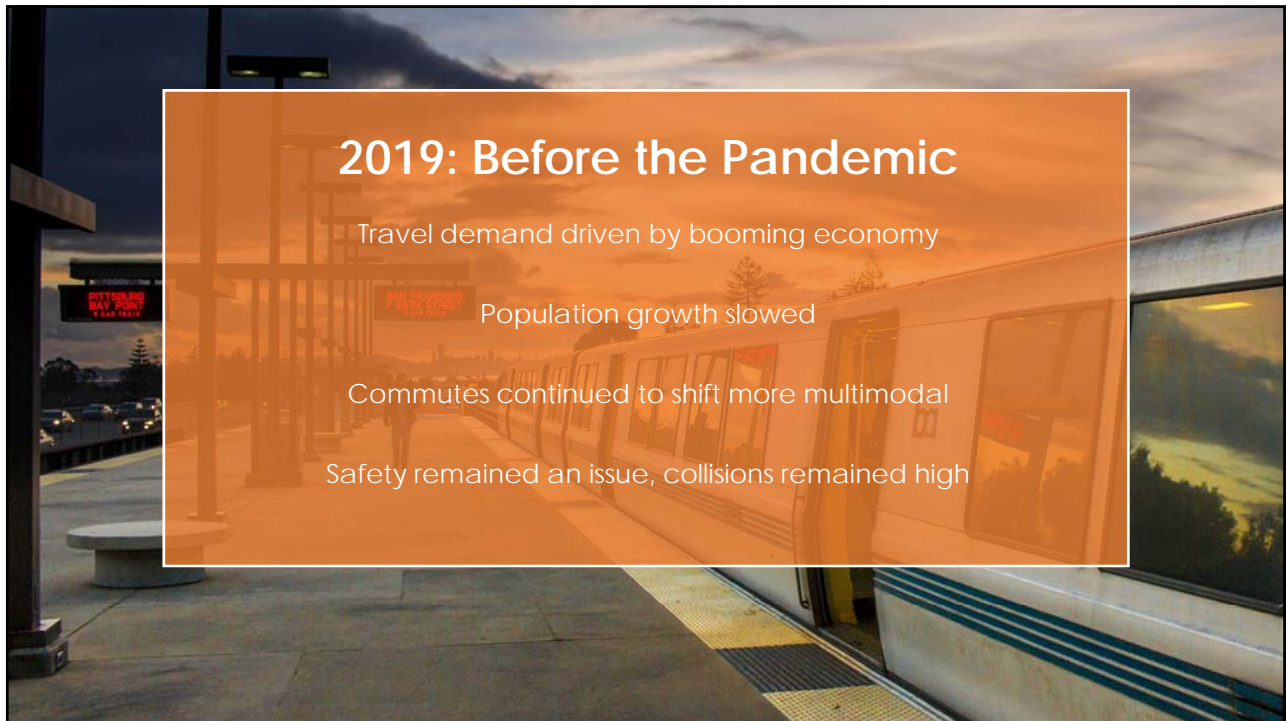
## 2019: Before the Pandemic

Travel demand driven by booming economy

Population growth slowed

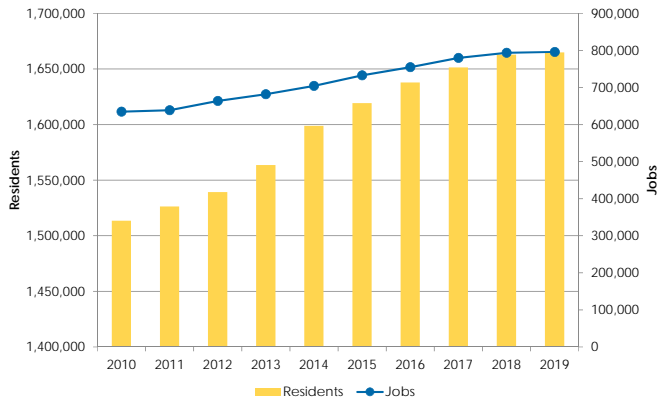
Commutes continued to shift more multimodal

Safety remained an issue, collisions remained high



# 2019: Slowing Growth in Alameda Co.

Annual Population and Job Growth



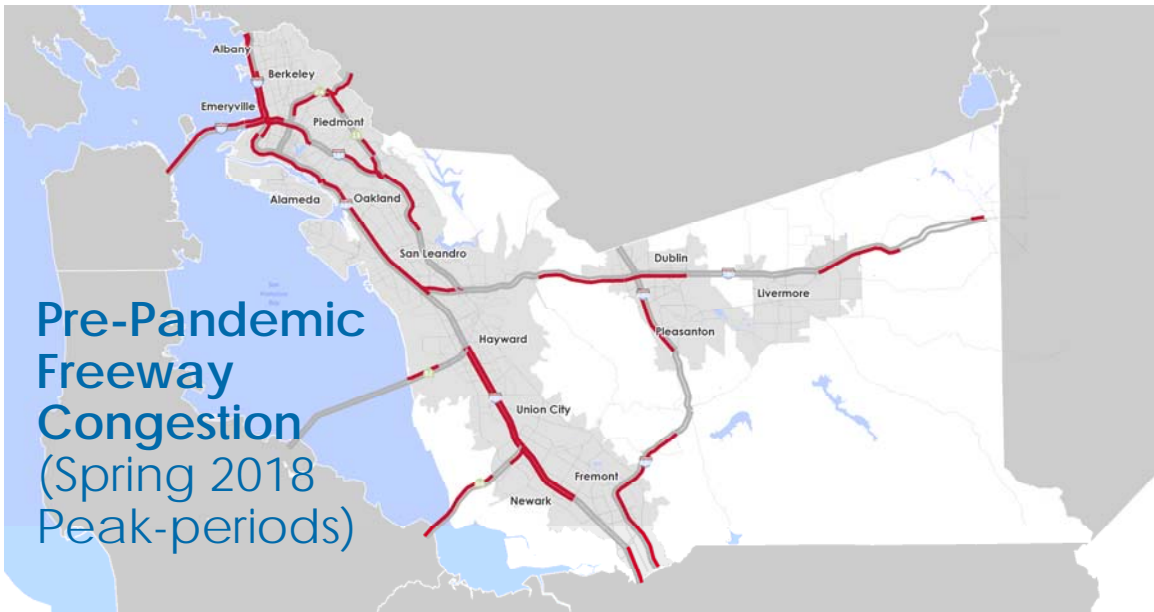
**Alameda County**  
1,660,000 total population  
800,000 total jobs

**Unemployment Rate**  
2.5% - 3.0%



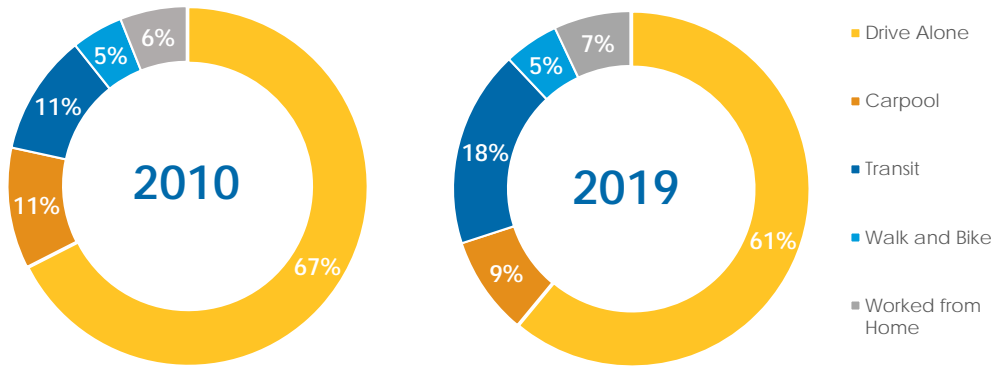
Sources: BLS OCEW, 2006-2019 (jobs), DOF 2006-2019 (residents)

**Pre-Pandemic  
Freeway  
Congestion  
(Spring 2018  
Peak-periods)**



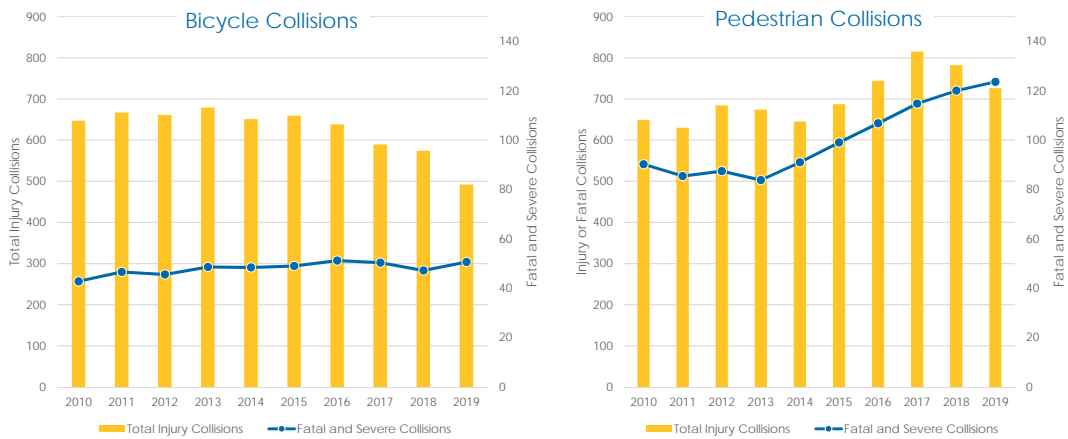
Sources: Alameda CTC LOS Monitoring Report, 2018 AM/PM LOS-F

# Commuters continued to choose transit

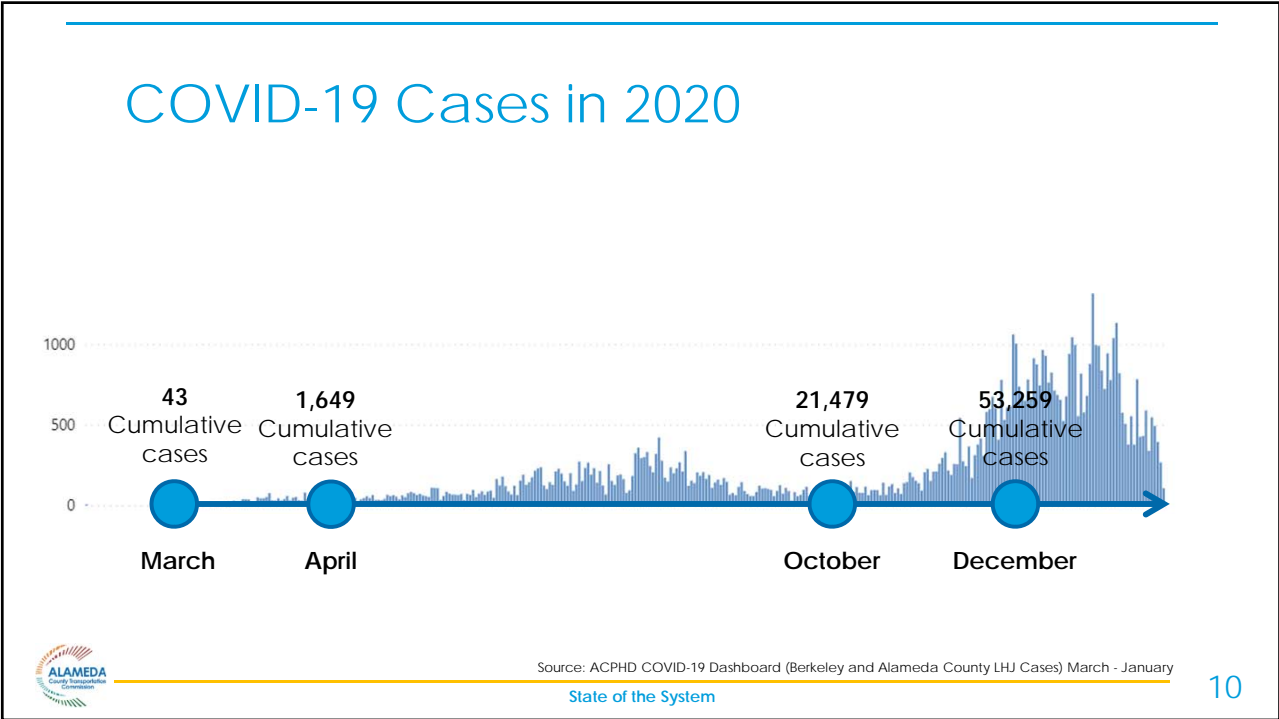


Sources: American Community Survey 1-year Estimate, 2010, 2017

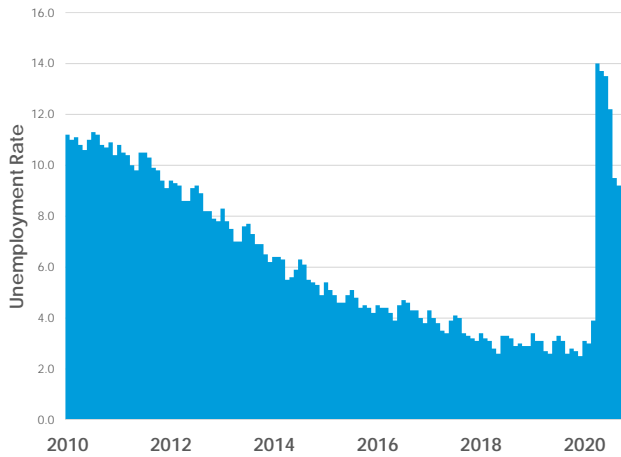
# Safety still a concern



Sources: Traffic Injury Mapping System (2010 – 2019(provisional))



# Historic Rise in Unemployment

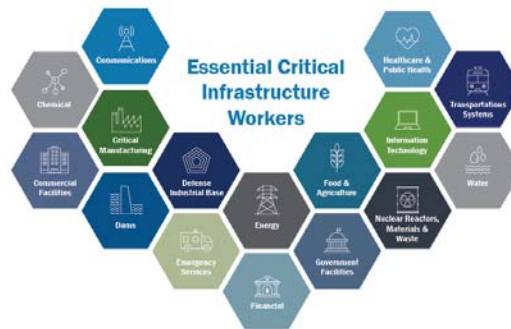
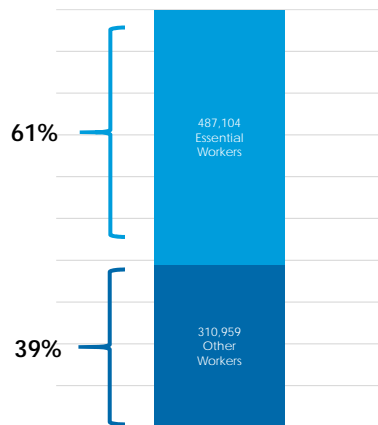


- December 2019: 2.5%
- April 2020: 14.0%
- October 2020: 7.6%



Source: Bureau of Labor Statistics, Local Area Unemployment, Alameda County, January 2010 - November (P).

# Essential Workers and Telecommuting in Alameda County

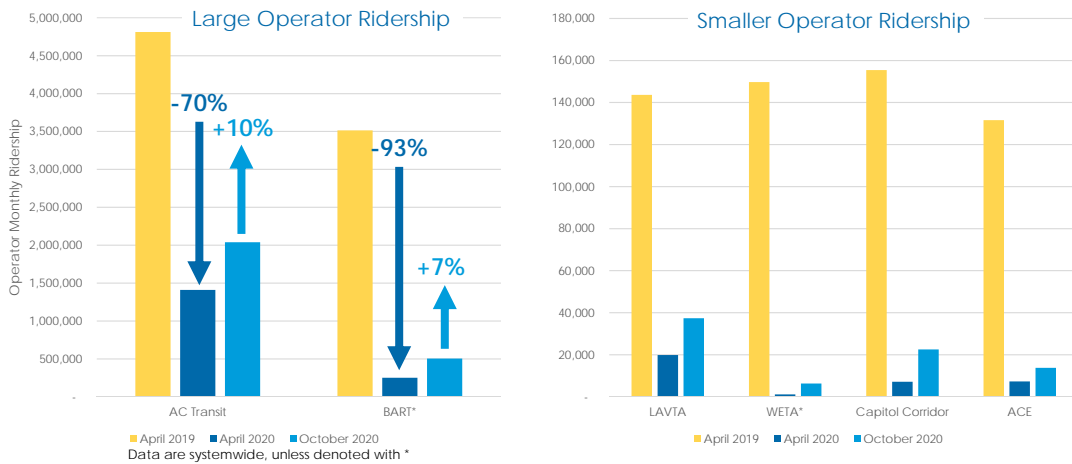


Sources: Bureau of Labor Statistics, Quarterly Census of Employment and Wages Q1, 2020; Graphic Source: Department of Homeland Security

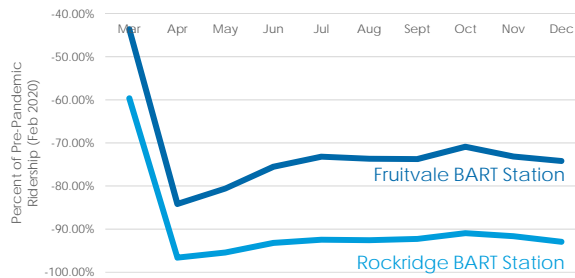
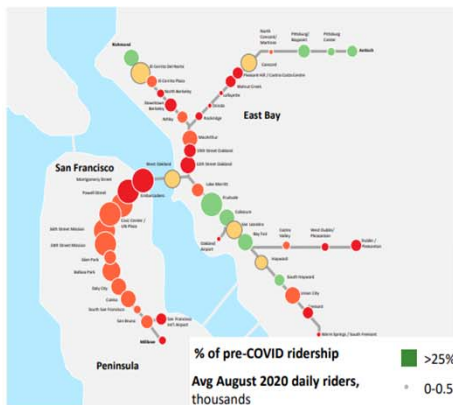




## Transit Ridership down more than 90%

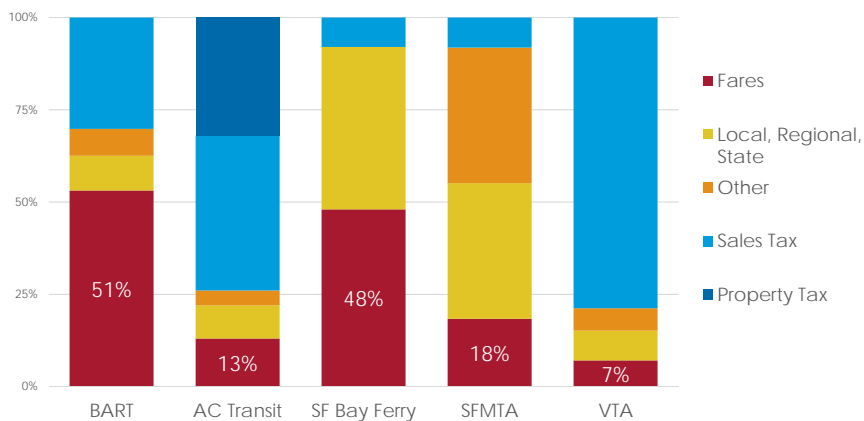


# Recovery focused in low-income areas



Sources: BART

# Loss of fare revenue hurting operators



Source: AC Transit



## Recovery, Adaptation, and Relief

- CARES/CRRSAA
- Blue Ribbon Transit Recovery Task Force
- Bay Area Healthy Transit Plan
- Operators have quickly taken action



### 2020: Roadways and Congestion

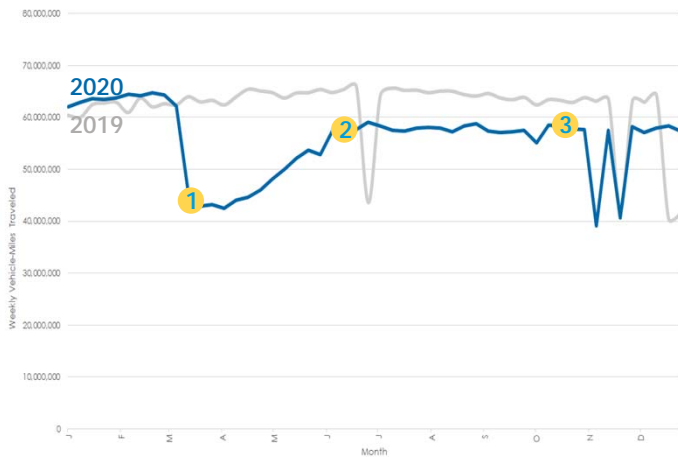
Modest decline in travel during peak commuter hours results in large drops in congestion

Average speed up on all roads

Higher speeds raise safety concerns



# Total VMT down



- 1 **March** initial 30% drop in VMT
- 2 **July** VMT back to ~12% of 2019 VMT
- 3 **October** VMT back to ~8% of 2019 VMT before holiday



Sources: PeMS , Vehicle-miles Traveled, Alameda County, All-day, 2019-2020



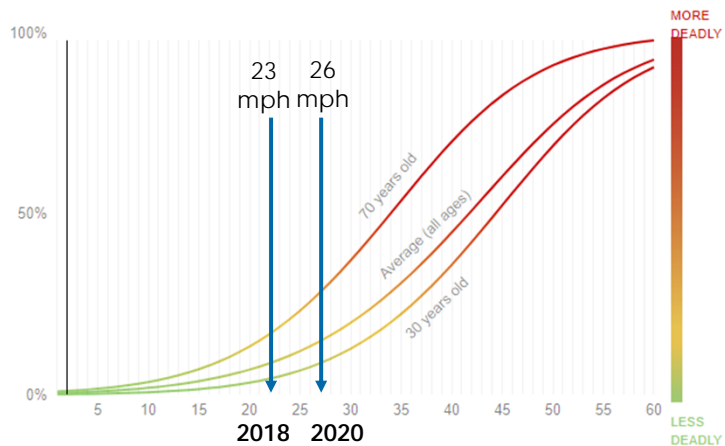
# Post-Pandemic Freeway Congestion (Fall 2020 Peak-periods)

— Congested in 2018 and Uncongested in 2020  
— Congested in 2020



Sources: Alameda CTC CMP Monitoring Report, 2018, 2020 AM/PM LOS-F

# Higher Travel Speeds - concern for Safety



Sources: AAA Foundation for Traffic Safety, Impact Speed and a Pedestrian's Risk of Severe Injury or Death, September 2011, graph by ProPublica

State of the System

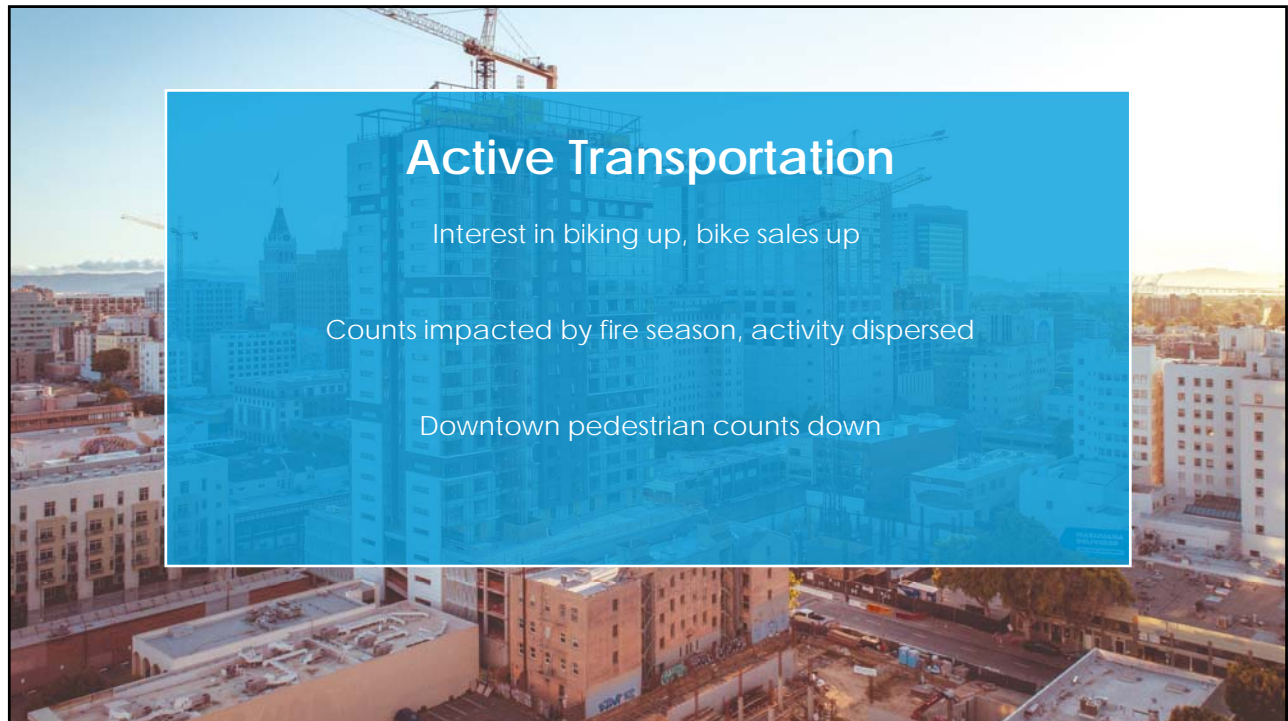
21

## Active Transportation

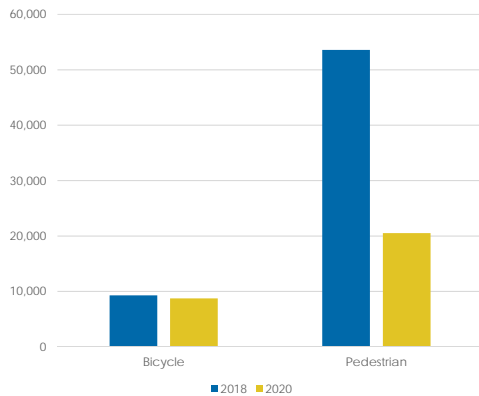
Interest in biking up, bike sales up

Counts impacted by fire season, activity dispersed

Downtown pedestrian counts down



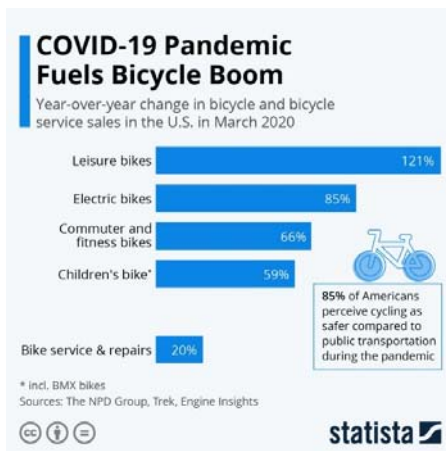
## Bike and Ped Counts Down



- Fall Bike/Ped Counts at 150 Locations
- Bike Counts **down 6%**
  - PM commute (4-6) counts down 6%
  - Mid-day (12-2) counts up 5%
  - After School (2-4) counts down slightly (sample small)
- Pedestrian counts **down 62%**
  - PM commute (4-6) counts down 56%
  - Mid-day (12-2) counts down 62%
  - After School (2-4) counts down 79%

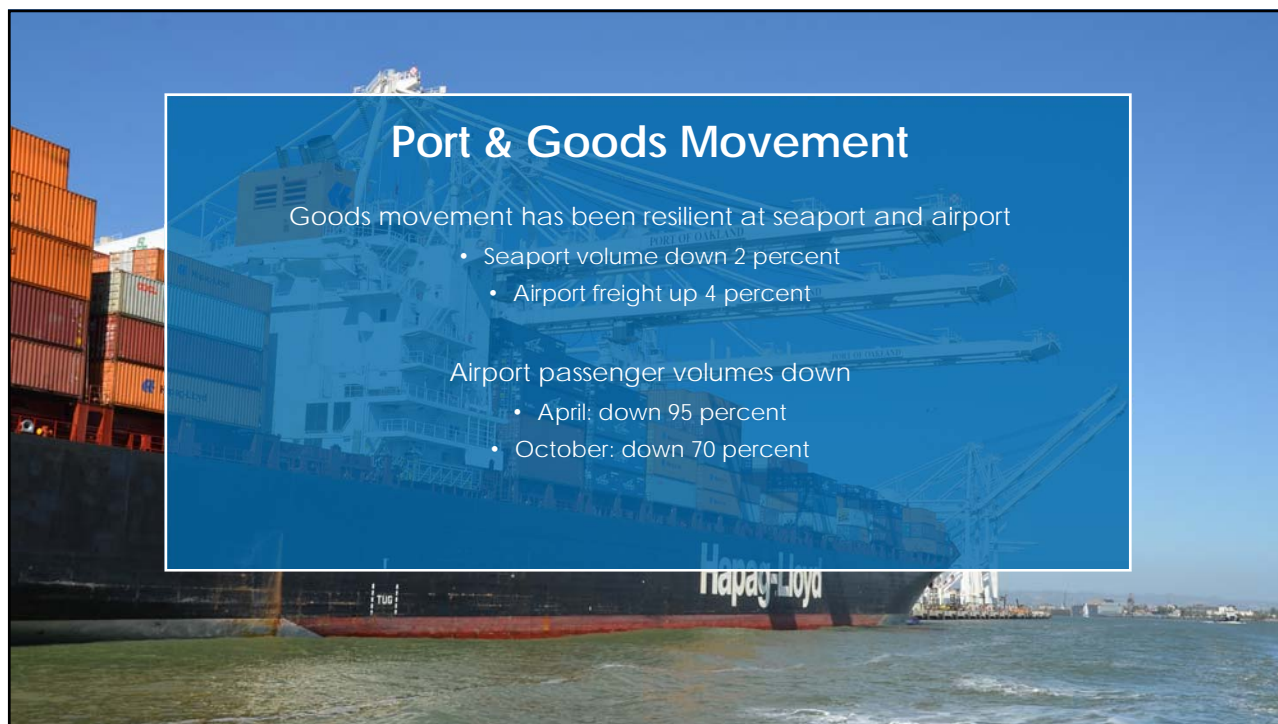


## Mixed data on bike use



- Bike sales up significantly
- Historic wildfire season may have impacted counts
- Activity may be more diffuse





### Plan:

- Modal Plans
- Countywide Transportation Plan
- High-injury Network
- Community Based Transportation Plans

### Fund:

- CIP Call for Projects: Transit & Active Trans. Projects
- Rapid Response COVID-19 Bike/Ped Grant

### Deliver:

- Advocate for legislative agenda
- Multimodal Corridor Projects
- East Bay Greenway
- Multimodal Interchange projects





# Thank You!

Alameda County Transportation Commission • 1111 Broadway, Suite 800  
Oakland, CA 94607 • 510.208.7400

