



ALAMEDA COUNTY TRANSPORTATION COMMISSION

2020 Performance Report

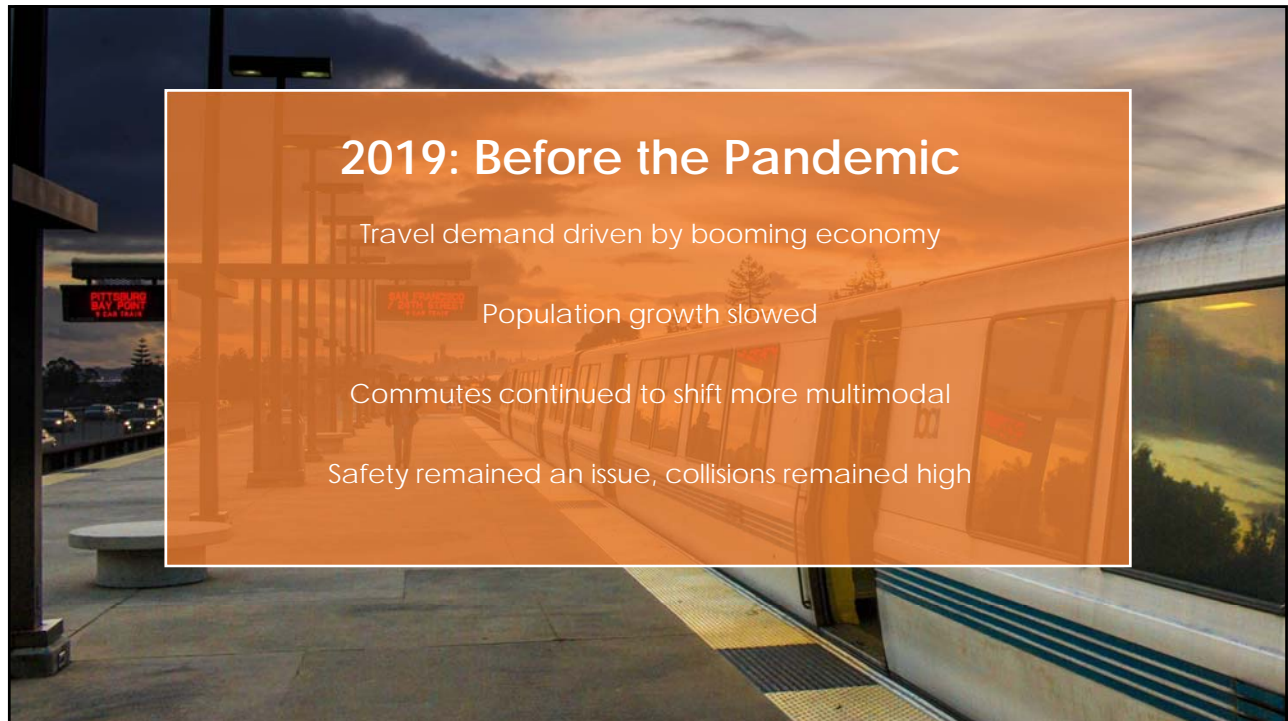
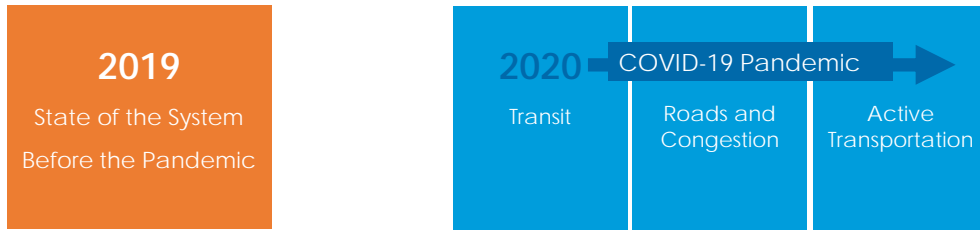



A presentation to the Bicycle and Pedestrian Advisory Committee
 Chris G. Marks, Transportation Planner, Alameda CTC
 February 4, 2020

About this Report

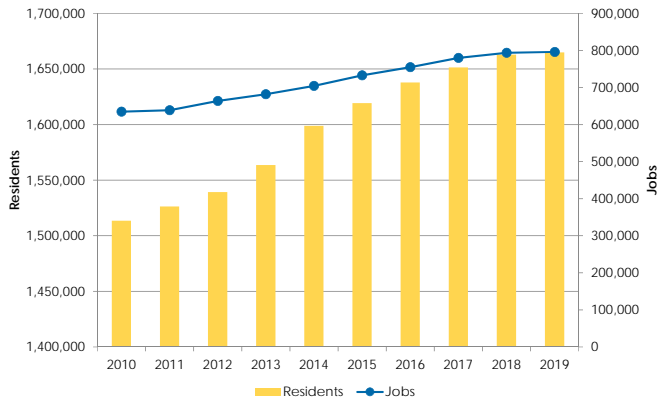
- The purposed of annual reporting:
 - Elucidate trends, highlight changes, provide important data to inform policy and decision-making throughout the agency
 - Meets legislative requirement
- 2020 Report does not follow usual data methodologies
- Provides most current data/trend analysis on: active transportation, autos, transit, and goods movement
- Full Report available on website

2020 Performance Report



2019: Slowing Growth in Alameda Co.

Annual Population and Job Growth



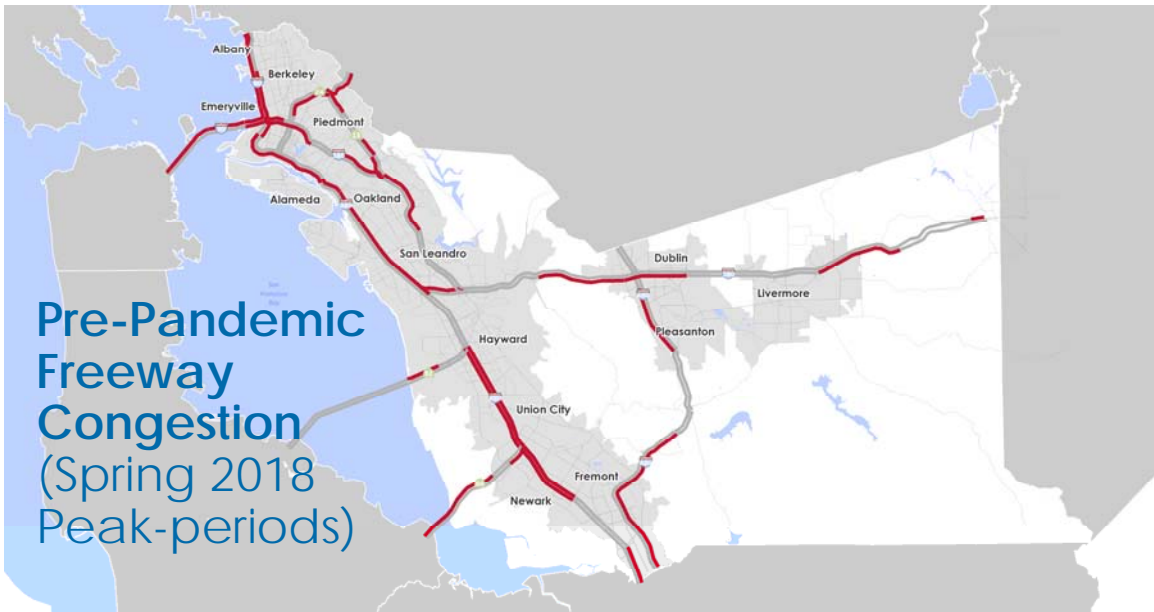
Alameda County
1,660,000 total population
800,000 total jobs

Unemployment Rate
2.5% - 3.0%



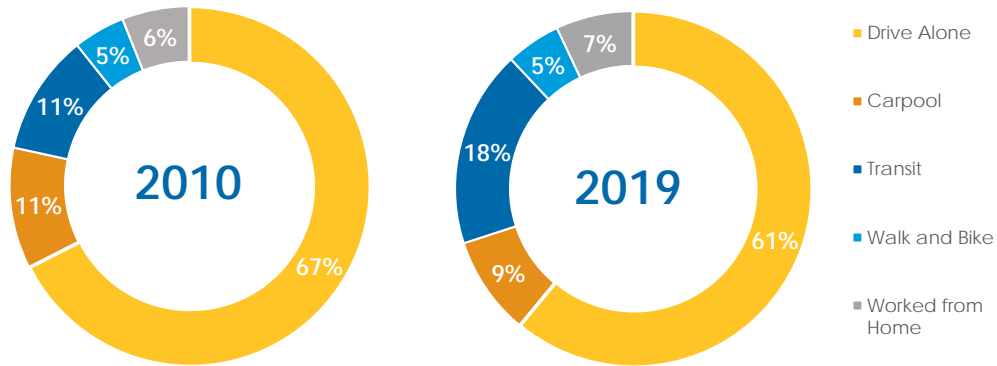
Sources: BLS OCEW, 2006-2019 (jobs), DOF 2006-2019 (residents)

**Pre-Pandemic
Freeway
Congestion
(Spring 2018
Peak-periods)**



Sources: Alameda CTC LOS Monitoring Report, 2018 AM/PM LOS-F

Commuters continued to choose transit

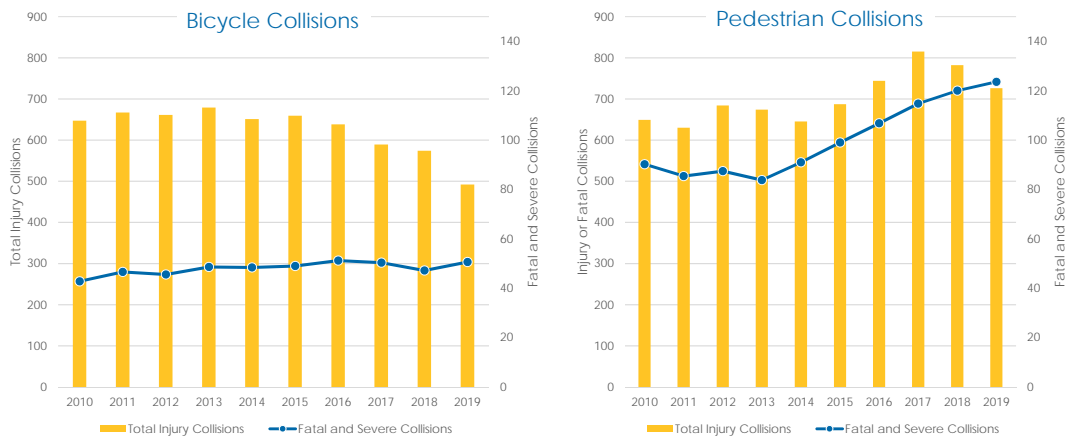


Sources: American Community Survey 1-year Estimate, 2010, 2017

State of the System

7

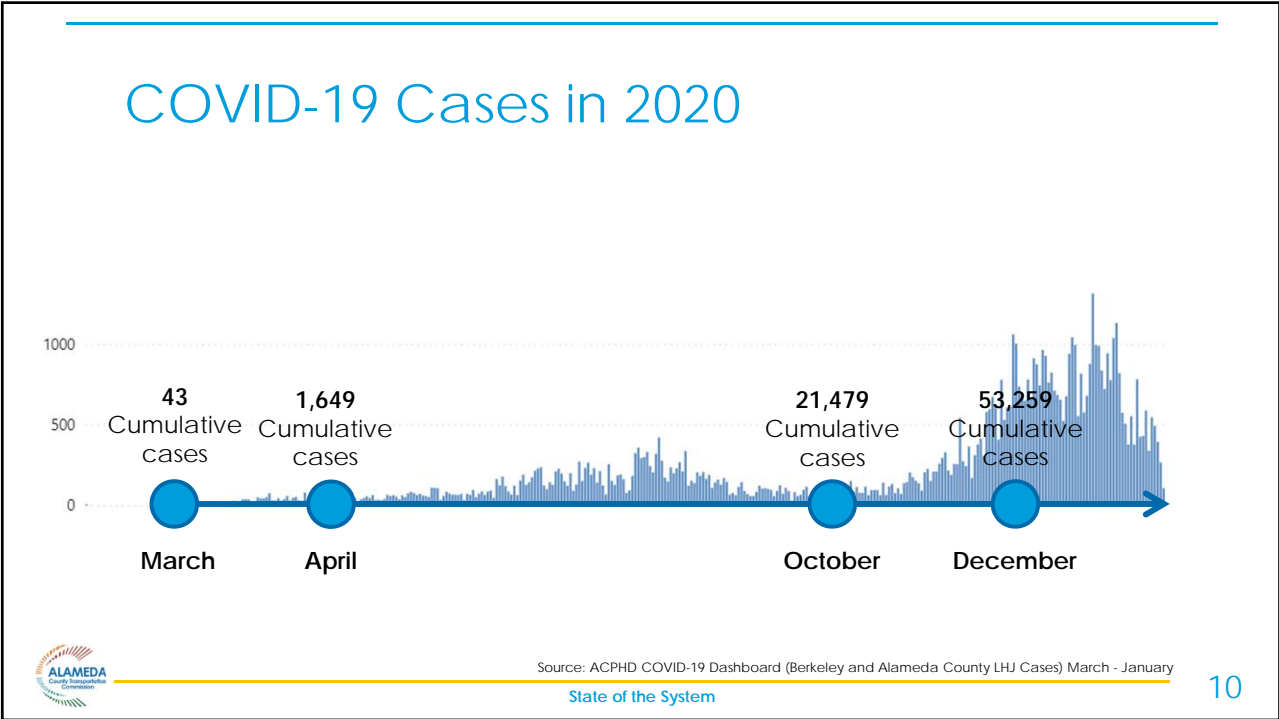
Safety still a concern



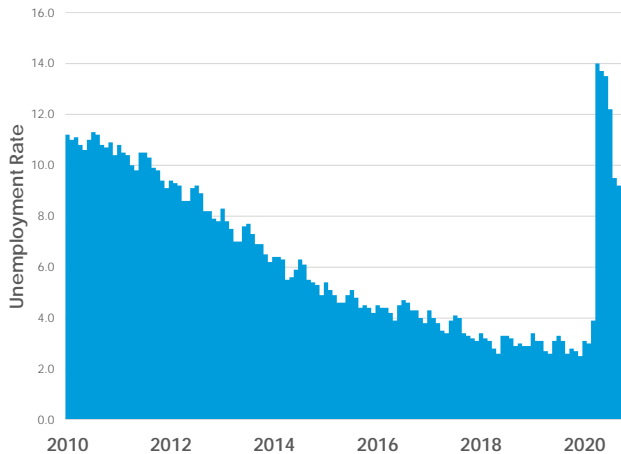
Sources: Traffic Injury Mapping System (2010 – 2019(provisional))

State of the System

8



Historic Rise in Unemployment

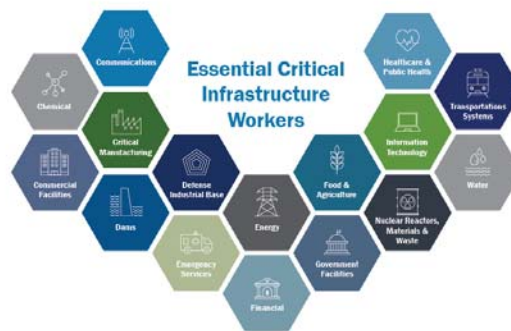
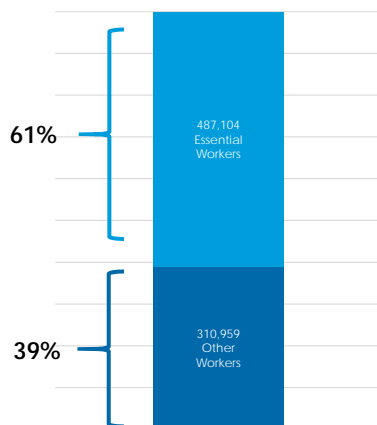


- December 2019: 2.5%
- April 2020: 14.0%
- October 2020: 7.6%



Source: Bureau of Labor Statistics, Local Area Unemployment, Alameda County, January 2010 – November (P).

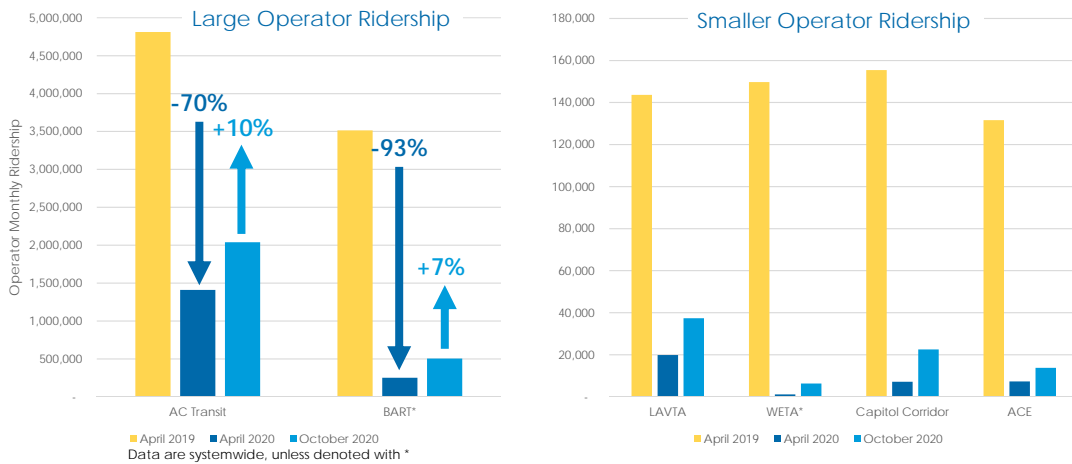
Essential Workers and Telecommuting in Alameda County



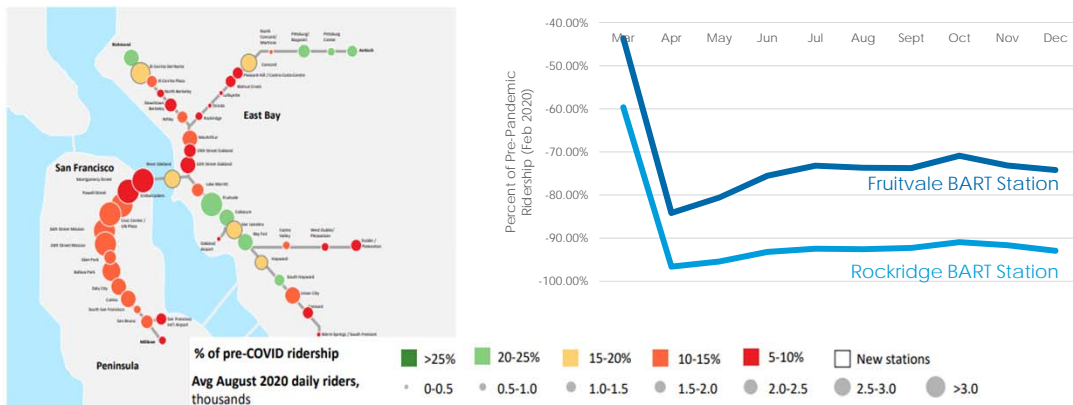
Sources: Bureau of Labor Statistics, Quarterly Census of Employment and Wages Q1, 2020; Graphic Source: Department of Homeland Security



Transit Ridership down more than 90%



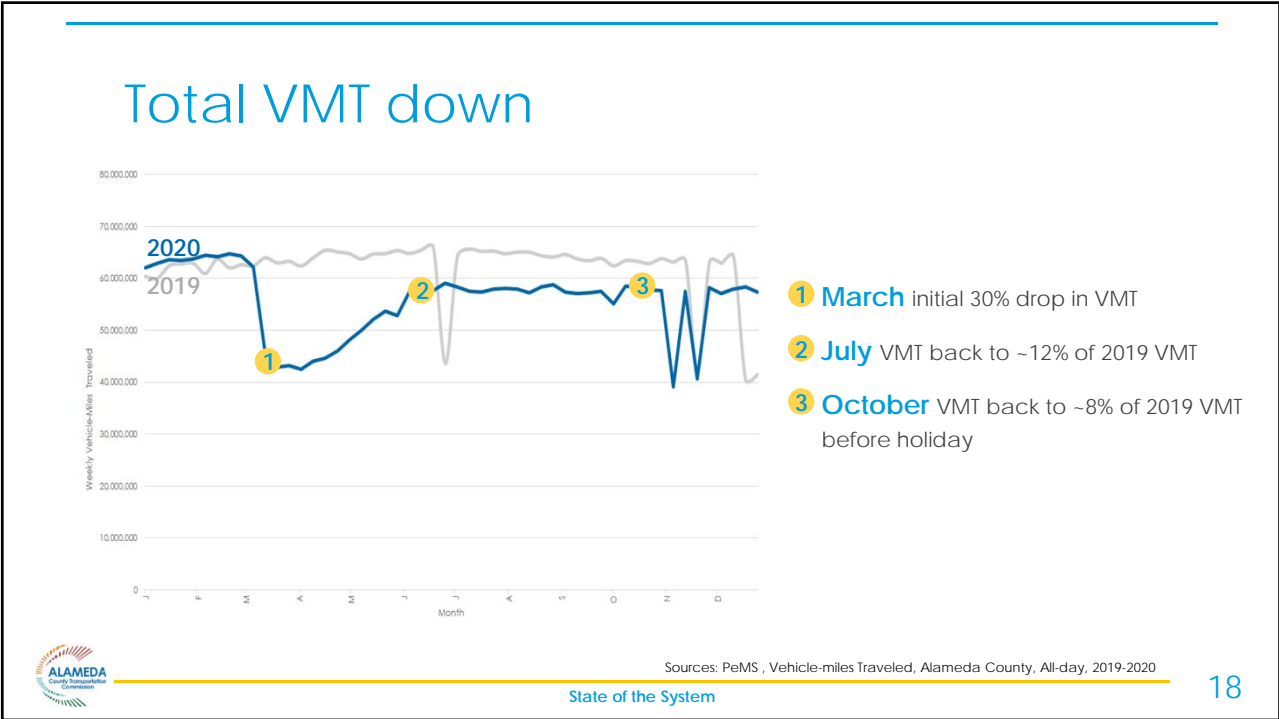
Recovery focused in low-income areas



Recovery, Adaptation, and Relief

- CARES/CRRSAA
- Blue Ribbon Transit Recovery Task Force
- Bay Area Healthy Transit Plan
- Operators have quickly taken action







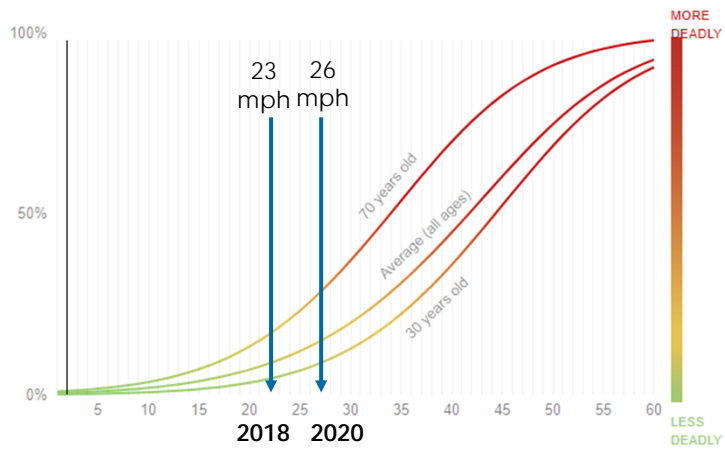
Post-Pandemic Freeway Congestion (Fall 2020 Peak-periods)



Sources: Alameda CTC CMP Monitoring Report, 2018, 2020 AM/PM LOS-F

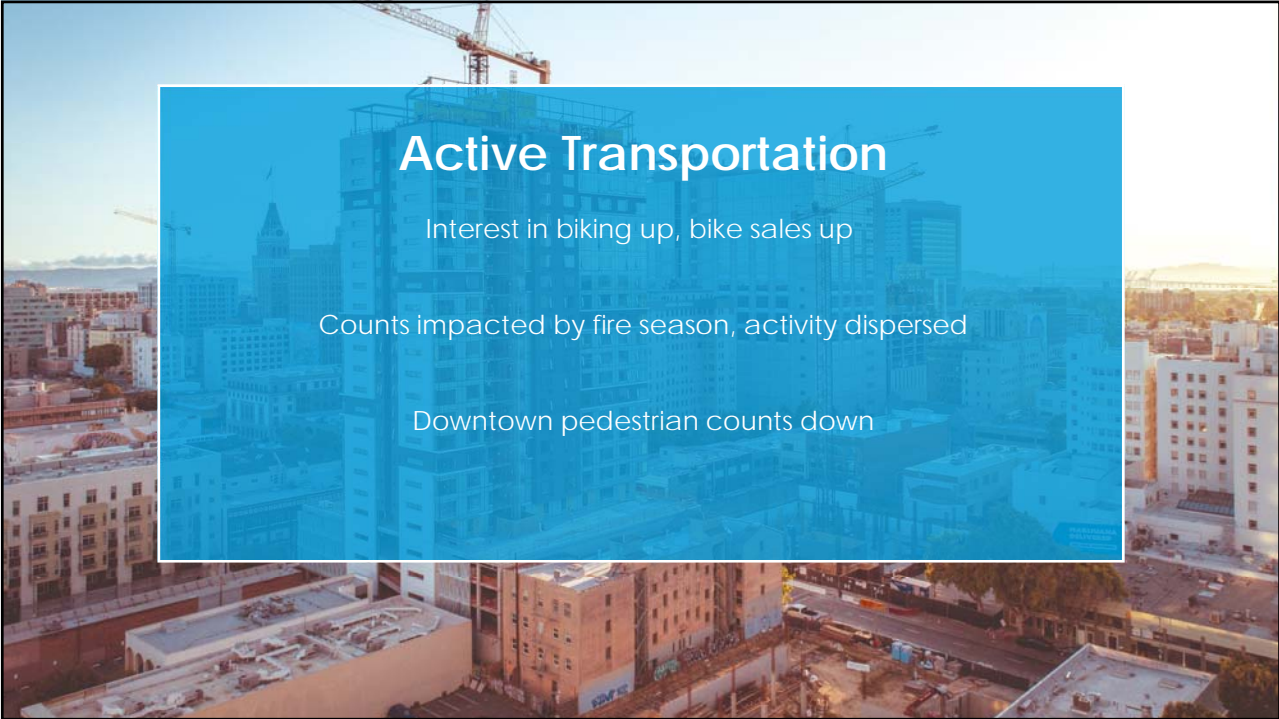
State of the System

Higher Travel Speeds - concern for Safety

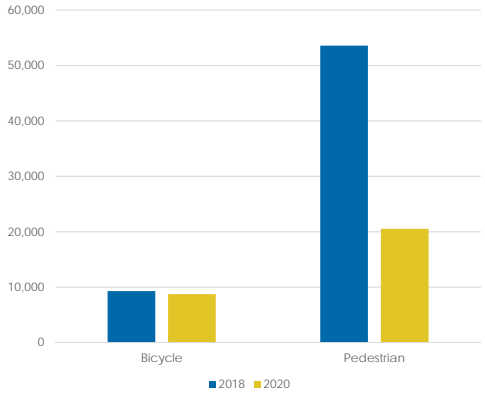


Sources: AAA Foundation for Traffic Safety, Impact Speed and a Pedestrian's Risk of Severe Injury or Death. September 2011, graph by ProPublica

State of the System



Bike and Ped Counts Down

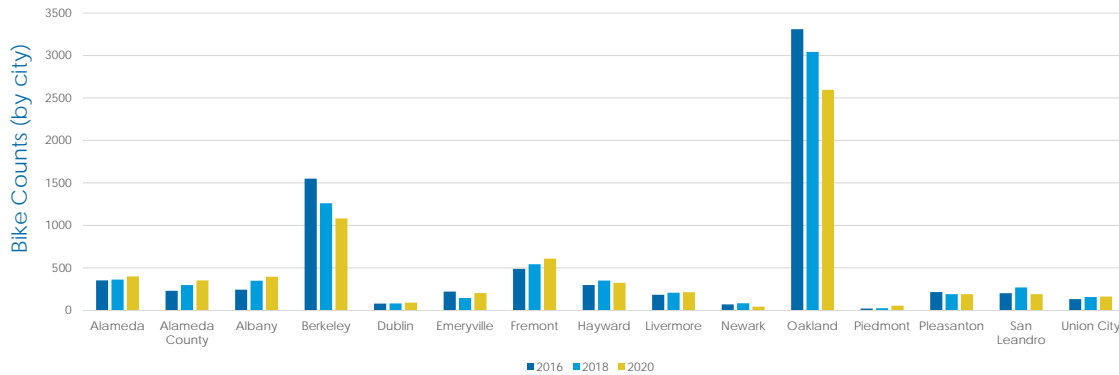


- Fall Bike/Ped Counts at 150 Locations
- Bike Counts **down 6%**
 - PM commute (4-6) counts down 6%
 - Mid-day (12-2) counts up 5%
 - After School (2-4) counts down slightly (sample small)
- Pedestrian counts **down 62%**
 - PM commute (4-6) counts down 56%
 - Mid-day (12-2) counts down 62%
 - After School (2-4) counts down 79%



Sources: CMP Monitoring Bike/Ped Counts (August - October 2018-2020)

High-volume Locations have dropped the most

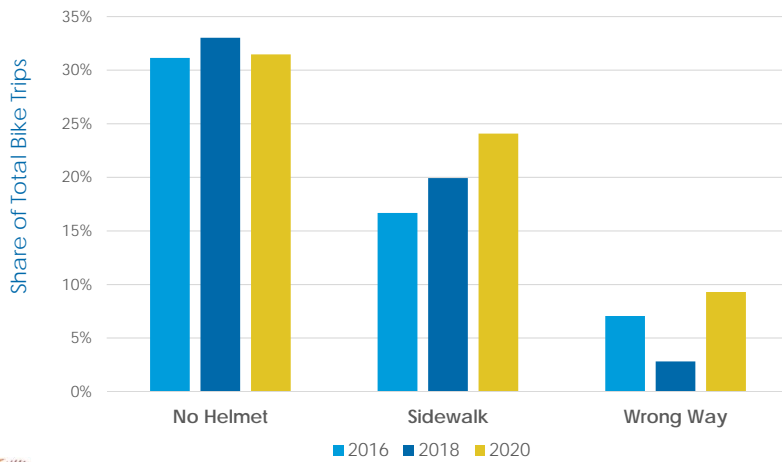


Sources: CMP Monitoring Bike/Ped Counts (August – October 2016-2020)

State of the System

23

Safety Data Mixed



- 1 in 3 Cyclists counted did not wear a helmet
- Sidewalk riding and wrong way riding can reveal rider

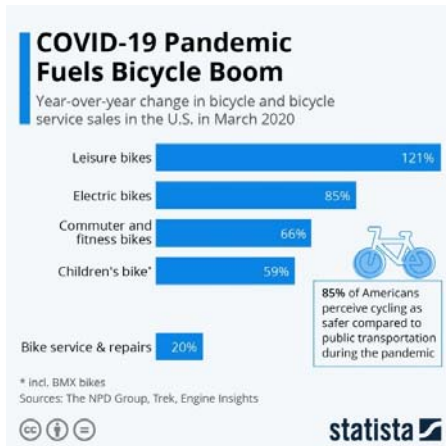


Sources: CMP Monitoring Bike/Ped Counts (August – October 2016-2020)

State of the System

24

Mixed data on bike use



- Bike sales up significantly
- Historic wildfire season may have impacted counts
- Activity may be more diffuse



Plan:

- Modal Plans
- Countywide Transportation Plan
- High-injury Network
- Community Based Transportation Plans

Fund:

- CIP Call for Projects: Transit & Active Trans. Projects
- Rapid Response COVID-19 Bike/Ped Grant

Deliver:

- Advocate for legislative agenda
- Multimodal Corridor Projects
- East Bay Greenway
- Multimodal Interchange projects



Thank You!

Alameda County Transportation Commission • 1111 Broadway, Suite 800
Oakland, CA 94607 • 510.208.7400

