



01

2020 AND BEYOND

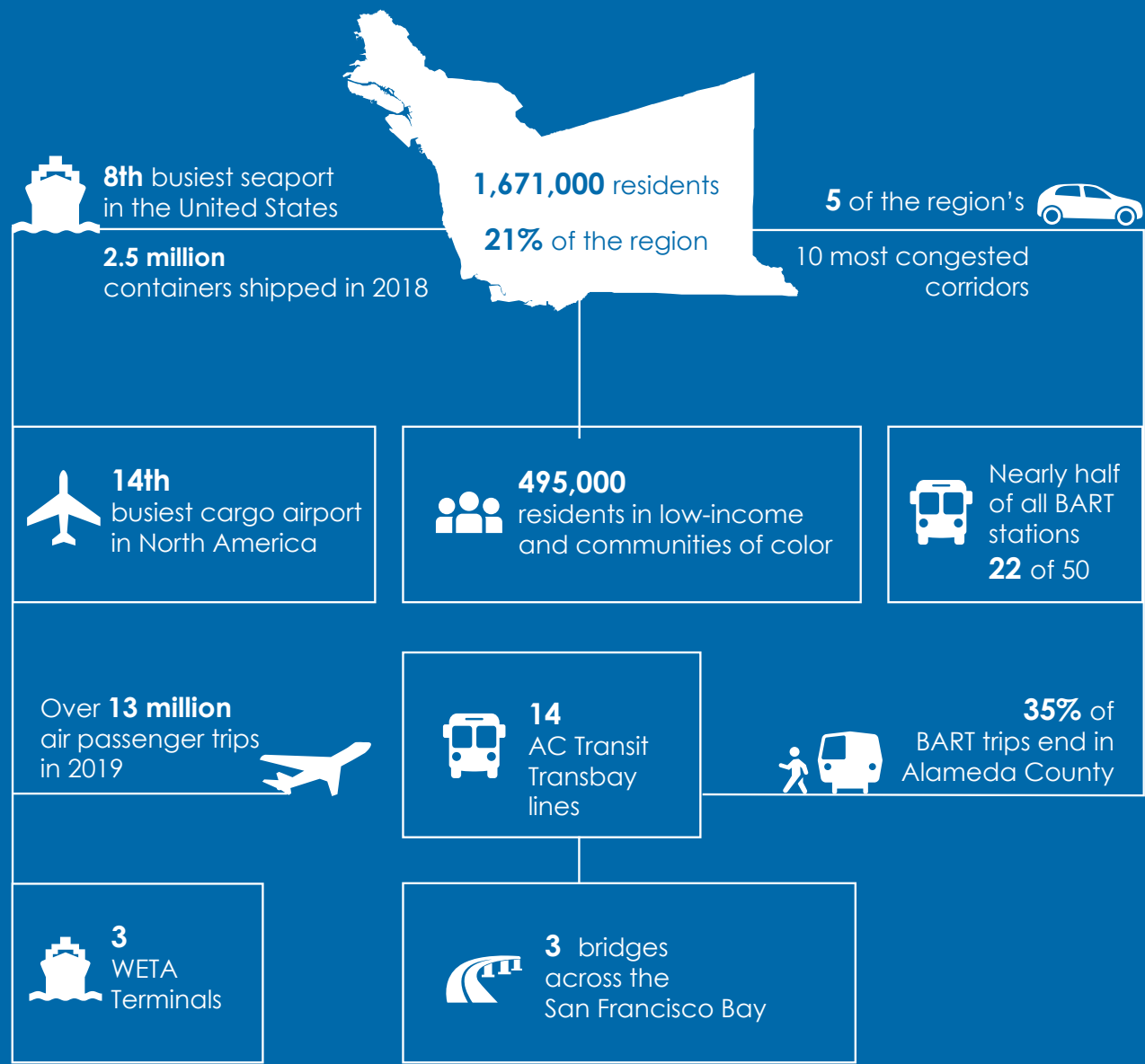
A Vision for the Future of Transportation
in Alameda County

This plan sets a long-range vision and establishes near-term priorities for transportation in Alameda County

The 2020 update to the Countywide Transportation Plan (2020 CTP) establishes near-term projects, programs, and strategic priorities, details a 30-year transportation vision and guides the decision-making of the Alameda County Transportation Commission (Alameda CTC), an agency responsible for planning, funding, and delivering transportation improvements throughout Alameda County. Alameda CTC updates the CTP every four years to accommodate changing conditions and new demands placed on the transportation system. The 2020 version emphasizes projects, programs, and strategies to pursue over a shorter, 10-year horizon, while still working toward a long-range vision.

THE ALAMEDA COUNTY TRANSPORTATION SYSTEM IS STRESSED FROM CARRYING A LARGE SHARE OF THE REGIONAL BURDEN

Alameda County serves a critical role in the Bay Area transportation system, with key transbay gateways, connections to international and domestic markets through the Port of Oakland and Oakland International Airport, and other transportation infrastructure utilized for local and regional travel. Increasing demands on the transportation system impact its safety, accessibility, and effectiveness. Additionally, economic trends like rising inequality and housing costs stress residents and affect day-to-day transportation decisions.



See References page at the end of this document for a full list of sources.


THE PLAN VISION PROMOTES HEALTHY, SAFE, AND LIVABLE COMMUNITIES THROUGH MOBILITY AND ACCESS FOR ALL

Alameda County is a diverse place with a complex transportation system. The CTP establishes a vision for transportation improvements that responds to current and future travel, climate, economic, and demographic trends, as well as today's transportation needs.

THE TRANSPORTATION VISION

Alameda County residents, businesses, and visitors will be served by a premier transportation system that supports a vibrant and livable Alameda County through a connected and integrated multimodal transportation system promoting sustainability, access, transit operations, public health, and economic opportunities.

FOUR GOALS SUPPORT THE TRANSPORTATION VISION

-  **ACCESSIBLE, AFFORDABLE, AND EQUITABLE**
Improve and expand connected multimodal choices that are available for people of all abilities, affordable to all income levels and equitable.
-  **SAFE, HEALTHY, AND SUSTAINABLE**
Create safe multimodal facilities to walk, bike and access public transportation to promote healthy outcomes and support strategies that reduce reliance on single-occupant vehicles and minimize impacts of pollutants and greenhouse gas emissions.
-  **HIGH QUALITY AND MODERN INFRASTRUCTURE**
Deliver a transportation system that is of a high quality, well-maintained, resilient, and maximizes the benefits of new technologies for the public.
-  **ECONOMIC VITALITY**
Support the growth of Alameda County's economy and vibrant local communities through a transportation system that is safe, reliable, efficient, cost-effective, high-capacity and integrated with sustainable transit-oriented development facilitating multimodal local, regional, and interregional travel.

THE CORE RECOMMENDATIONS ARE PRIORITY PROJECTS & PROGRAMS AND STRATEGIES & NEAR-TERM ACTIONS

The **core recommendations** of the 2020 CTP represent the culmination of two years of technical analysis and engagement with the general public, partner agencies, and local officials. The iterative process, guided by the Commission, included input from staff from all cities, the County, and transit agencies. Multiple rounds of research, analysis, and stakeholder engagement

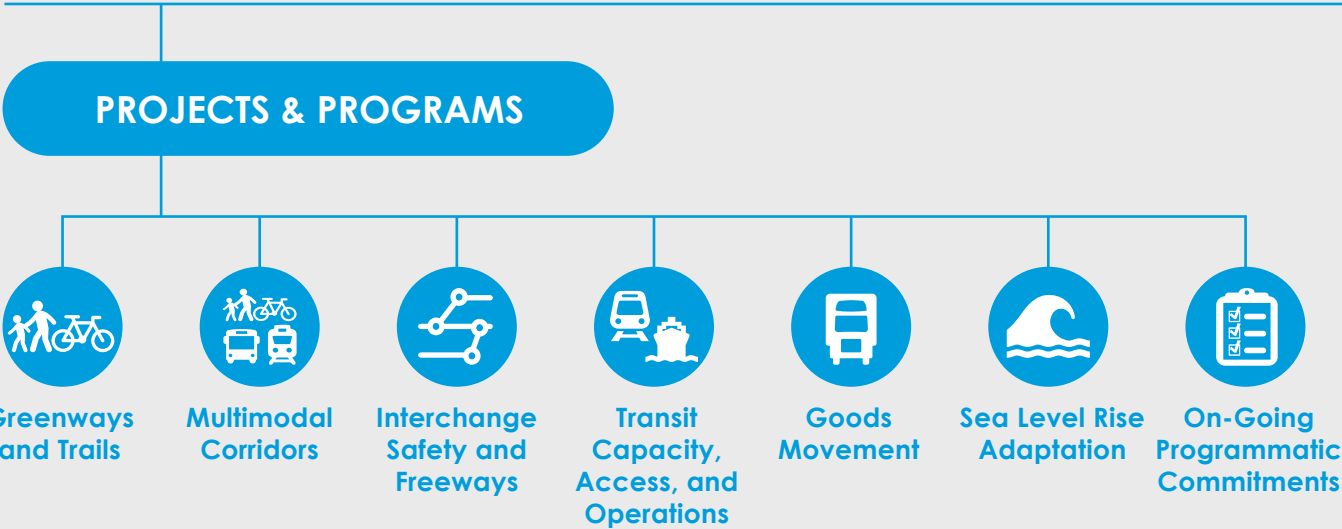
fed into the development and refinement of the core recommendations. These 10-year transportation priorities, summarized in the graphic below, include an ambitious set of projects, programs, strategies, and near-term actions that address the County's most pressing transportation needs and help Alameda CTC make progress on the plan's vision over the next decade.

THE OVERALL TIME HORIZON OF THE PLAN SPANS 30 YEARS

The 2020 CTP makes recommendations over two time frames: the near-term core recommendations prioritized for implementation over the next 10 years and the long-term set of projects and programs out to 2050.



CORE RECOMMENDATIONS OF THE 2020 CTP



Across the county, **93 projects** are prioritized for implementation over the next decade. These projects address both countywide and local needs, including improvements to multimodal corridors, public transit systems, and greenways and trails, as well as to interchange safety, freeway efficiency, goods movement operations, and climate adaptation. The priority list also emphasizes making transportation

improvements in key locations, such as low-income communities and communities of color and areas prioritized for growth and development, specifically in Priority Development Areas (PDAs). Additionally, **5 programs** that support mobility and access and represent long-standing agency commitments are included in the priority list.



Strategies complement the priority projects and programs. They were developed by applying industry best practices to the Alameda County context and identifying opportunities beyond building infrastructure and delivering transportation services to advance the vision and goals and address needs. These include policies, legislative advocacy efforts, technical assistance, funding, and project implementation guidance. Strategies will guide agency decision-making, work programs, and engagement with partner agencies.

Near-Term Actions are concrete steps to advance strategies. This list is neither static nor comprehensive, and it will evolve as conditions change and new opportunities arise prior to development of the next CTP.

THE 2020 CTP INFORMS COUNTYWIDE AND LOCAL PLANNING AND FUNDING

At a countywide level, projects and programs in the 10-Year Priority List will inform funding decisions in Alameda CTC's Comprehensive Investment Plan (CIP), and strategies and near-term actions will guide work programs and engagement with partner agencies.

Alameda CTC also plays a critical role in facilitating local planning by providing funding to local projects and local technical assistance. Local cities and agencies submitted projects for inclusion in the 2020 CTP, and the core recommendations were developed in close coordination with these cities and agencies to produce recommendations

that support local priorities, advance the goals of the 2020 CTP, and achieve a shared vision for all of Alameda County.

While some transportation needs are consistent across the county, the diversity of land use and transportation contexts in Alameda County means that there is also substantial variability in the needs and concerns of individual communities. As a result, Alameda CTC divides the county into four planning areas to allow for more refined analysis and tailored improvements during the planning process. Planning area definitions are used for planning purposes only and are not political units.

THE FOUR PLANNING AREAS OF ALAMEDA COUNTY



NORTH PLANNING AREA

663,200 residents
224,000 jobs

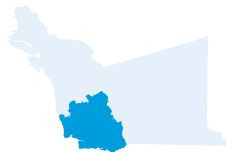
Alameda
Albany
Berkeley
Emeryville
Oakland
Piedmont



CENTRAL PLANNING AREA

388,300 residents
97,700 jobs

Ashland*
Cherryland*
Castro Valley*
Hayward
San Leandro
San Lorenzo*



SOUTH PLANNING AREA

354,000 residents
73,800 jobs

Fremont
Newark
Union City



EAST PLANNING AREA

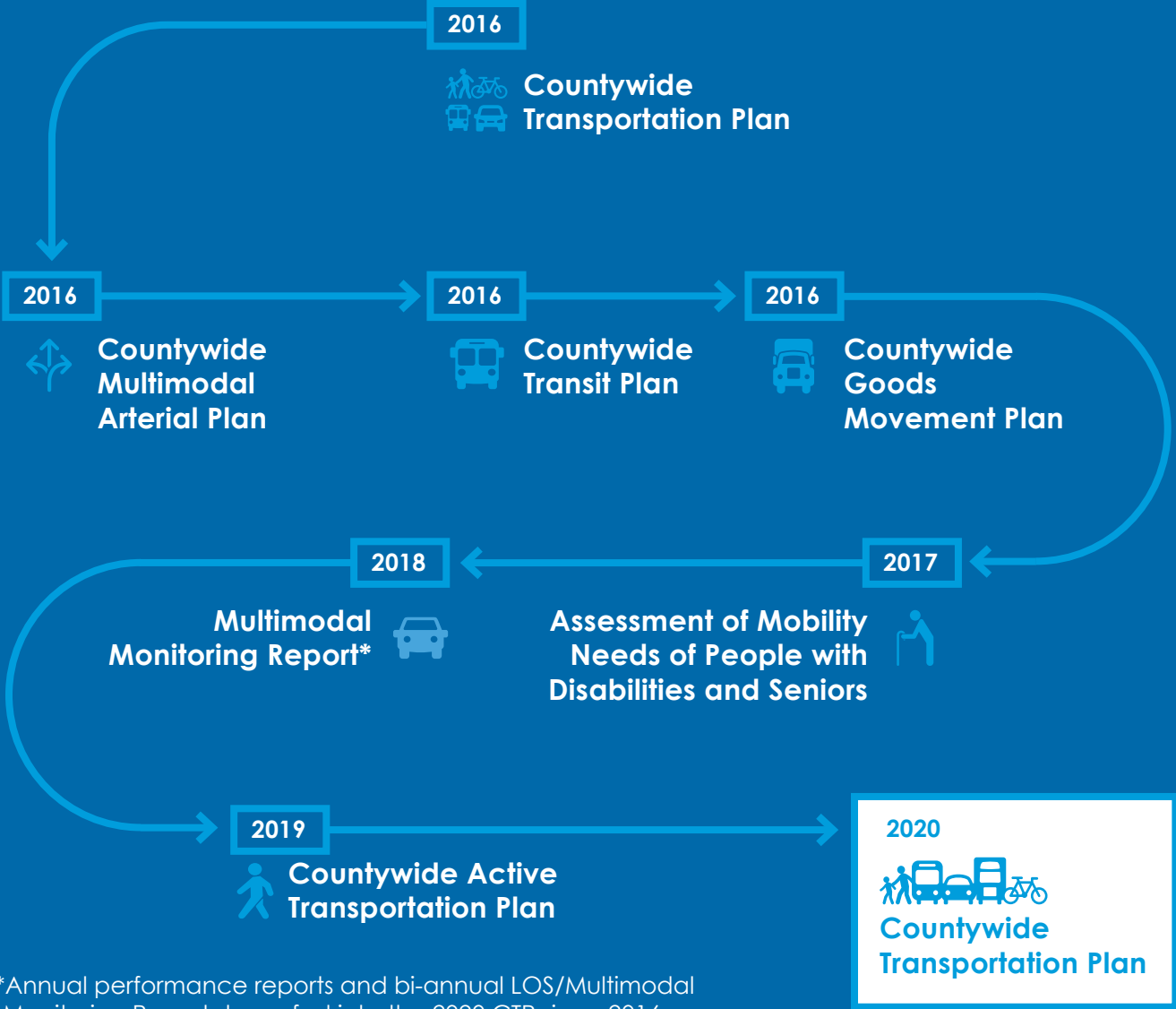
229,000 residents
72,600 jobs

Dublin
Livermore
Pleasanton
Sunol*

* Unincorporated communities

THIS PLAN BUILDS ON COUNTYWIDE PLANNING EFFORTS OF THE PAST FOUR YEARS

The 2020 CTP builds on past planning efforts and synthesizes their recommendations into one document. These plans, and the engagement and analysis used to develop them, represent detailed assessments of the needs and priorities for each transportation mode in the county and serve as a foundation for the subsequent analysis and recommendations of the 2020 CTP. The following reports developed since the 2016 CTP helped inform the 2020 CTP:



*Annual performance reports and bi-annual LOS/Multimodal Monitoring Reports have fed into the 2020 CTP since 2016



Jack London Square Ferry Terminal

THE 2020 CTP ALIGNS COUNTYWIDE PLANNING WITH REGIONAL GOALS

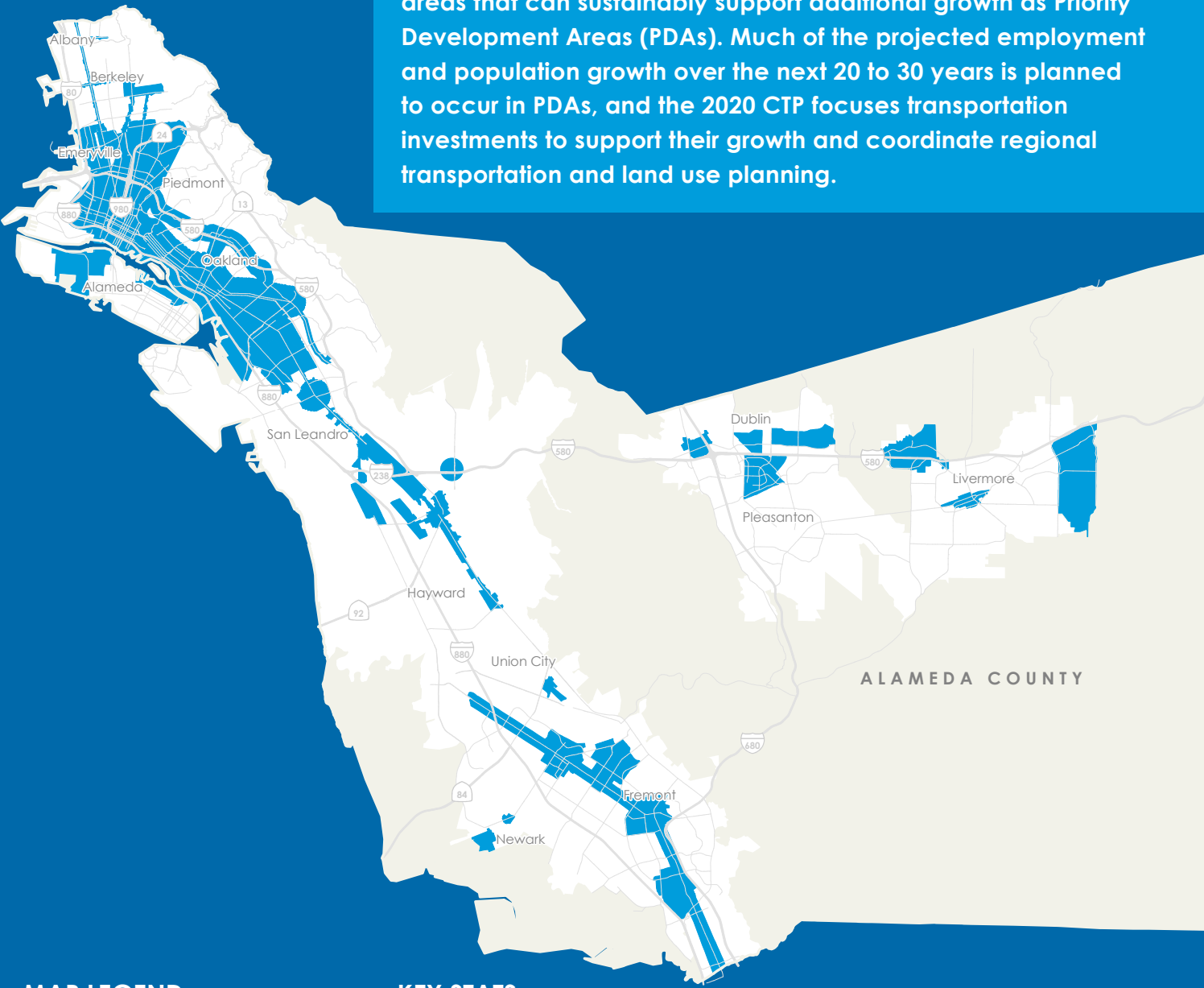
The 2020 CTP ensures that the needs and priorities of Alameda County are represented in regional planning and funding decisions. Plan Bay Area 2050 (PBA 2050) is the long-range regional transportation plan (RTP) currently being developed by the Metropolitan Transportation Commission (MTC) and the Association of Bay Area Governments (ABAG) to guide the growth of the nine-county Bay Area over the next 30 years. Scheduled for completion in 2021, the regional plan will identify transportation investments and strategies to lead the Bay Area toward a future that is affordable, connected, diverse, healthy and vibrant for all by 2050.

The vision and goals of the 2020 CTP are consistent with the goals of PBA 2050, and projects included in the 2020 CTP serve as an input to PBA 2050. Both the 2020 CTP and the regional transportation plan are updated every four years to accommodate changing conditions and new demands placed on the transportation system, as well as changes in policy and priorities.

Due to the timing between the CTP and the RTP updates, land use forecasts from PBA 2040 were used to develop this plan. PBA 2050 will be used as a foundational element for the next CTP, which will be completed in 2024.

PLAN INVESTMENTS LINK TRANSPORTATION AND LAND USE PLANNING BY SUPPORTING PRIORITY DEVELOPMENT AREAS

In partnership with local cities, MTC/ABAG designates transit-rich areas that can sustainably support additional growth as Priority Development Areas (PDAs). Much of the projected employment and population growth over the next 20 to 30 years is planned to occur in PDAs, and the 2020 CTP focuses transportation investments to support their growth and coordinate regional transportation and land use planning.




MAP LEGEND

 Priority Development Areas (PDA)

Source: MTC, PBA 2040

KEY STATS

 **303,500** jobs in PDAs in 2010, or 44% of total county jobs
69% of projected county job growth through 2040
72% of projected county household growth through 2040