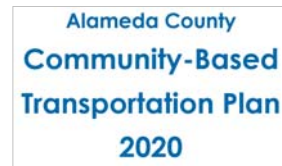
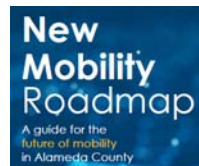




The cover page features the Alameda County Transportation Commission logo in the top left, which includes a stylized sunburst and the text 'ALAMEDA County Transportation Commission'. In the center is a blue icon depicting a pedestrian, a bus, a car, a van, and a bicycle. Below this icon is the title 'Alameda Countywide Transportation Plan 2020'. To the right, there are three overlapping images: a person at a community event, a traffic jam on a highway, and a port with shipping containers. At the bottom left, the text reads: 'A Presentation to Planning, Policy and Legislation Committee', 'Cathleen Sullivan, Director of Planning', 'Kristen Villanueva, Senior Transportation Planner', and 'November 9, 2020'.

Today's Recommended Action

- Adopt 2020 Countywide Transportation Plan and companion documents, Community-Based Transportation Plan and New Mobility Roadmap



www.alamedactc.org/countywidetransportationplan



What is the 2020 CTP?

- Long-range planning and policy document for all surface transportation modes and users in Alameda County
- Establishes long-range vision and goals to guide decisions
- Includes long-range projects and programmatic categories through 2050
- Establishes near-term priorities
 - Recommends **over 90 priority projects and programs** to advance over the next 10 years
 - Recommends **25 strategies** to complement the projects & programs for policy, guidance and advocacy



Input into the 2020 CTP

- Culmination of nearly 2 years of engagement, technical analysis, and plan development
 - ~30 Committee, Commission and ACTAC presentations including Planning Area meetings
 - Over 2,000 responses to surveys during 3 key input points to the CTP
 - 21 pop-up events and community focus groups across the county, mostly in low-income communities



Draft Final CTP



01

2020 AND BEYOND



02

PARTNERING WITH COMMUNITIES



03

MOBILITY AND ACCESS NEEDS



04

PRIORITY PROJECTS
AND PROGRAMS



05

STRATEGIES AND
NEAR-TERM ACTIONS



06

PERFORMANCE
AND IMPLEMENTATION



Draft Final CTP



01

2020 AND BEYOND



02

PARTNERING WITH COMMUNITIES



03

MOBILITY AND ACCESS NEEDS

**Core recommendations:
Guide agency decisions over the next 10 years**



04

PRIORITY PROJECTS
AND PROGRAMS

05

STRATEGIES AND
NEAR-TERM ACTIONS

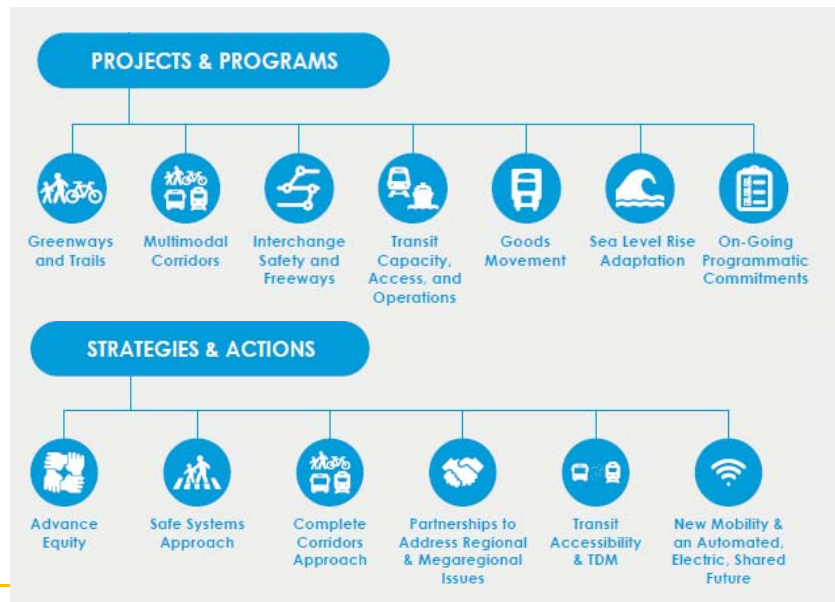


06

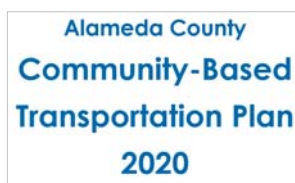
PERFORMANCE
AND IMPLEMENTATION



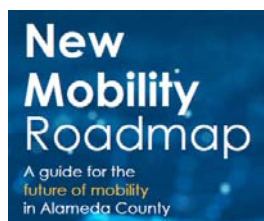
Core Recommendations



Companion Reports



Assessment of transportation needs in the county's low-income communities and communities of color with a focus on community input collected via public engagement activities.



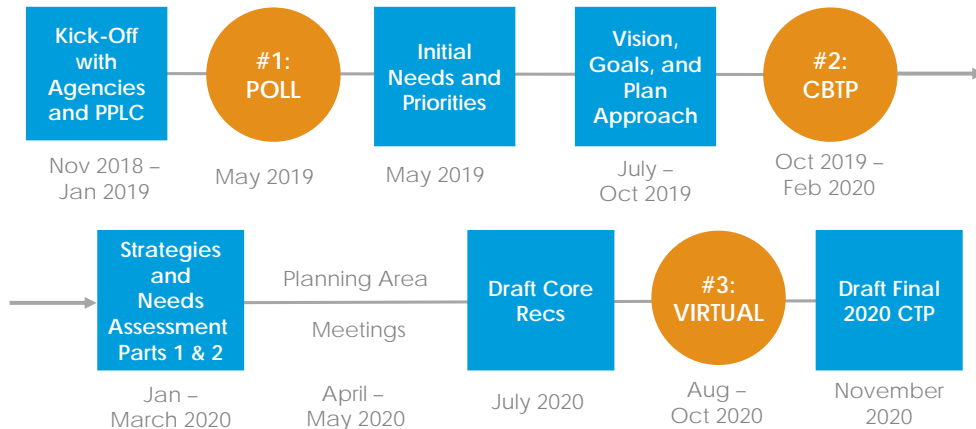
Addresses rapid change in transportation sector to support safe, equitable, and widely beneficial innovation and outcomes.

Includes seven initiatives with a comprehensive list of actions for agencies as they seek to support new technologies, and a priority set of near-term actions for Alameda CTC.



CTP Development: Three Key Public Engagement Efforts

Public input



Fall 2020 Outreach Summary



- Survey, Focus Groups, Correspondence
 - 700+ unique visitors to the 2020 CTP webpage
 - 1,300+ completed surveys; 100+ partial surveys
 - 1,000+ open-ended comments
 - 4 virtual meetings with community groups
 - 2 letters, 5 comments on webpage, several emails



Key Themes – Outreach

Fall 2020

- Safety and active transportation
- Transit connectivity, affordability, coverage and access
- Pavement condition, bottlenecks
- Equity considerations of safety, access and air quality
- Concern for climate and air quality
- Need for services for seniors and people with disabilities

May 2019

- Pavement condition
- Affordability
- Importance of safety
- Impacts of cut-through traffic
- Plan for future growth and address jobs-housing imbalance
- Freeway congestion & improving options for commuters



Survey Priorities – Fall 2020 Outreach

Walking and Biking	Public Transportation	Environmental Considerations
<ul style="list-style-type: none"> • Better walking routes • More trails and greenways • More separation/ protection for bicyclists 	<ul style="list-style-type: none"> • More convenient connections • Priority for buses on roadways • Cheaper fares or free transit for low-income residents 	<ul style="list-style-type: none"> • More low- or zero-emission vehicles for freight • Better air quality in low-income communities • More freight to rail
Roads and Freeways	New Mobility and Technology	Equitable Transportation
<ul style="list-style-type: none"> • Better pavement • Prioritization for bicyclists and buses on roadways • More coordinated traffic signals 	<ul style="list-style-type: none"> • Universal app to pay for all mobility • Equitable and affordable access 	<ul style="list-style-type: none"> • Safer streets in low-income communities • Better access to public transit in low-income communities

50% or more selected these as one of top 3 priorities in each category

Bolded text = two-thirds or more of respondents considered priority



How the CTP Addresses What we Heard

10-year Priority Projects and Programs

 **43**

Projects on the High-Injury Network

 **32**

Projects will create Multimodal Corridors



Local Streets and Roads Program

 **\$4B+**

BART and Commuter Rail

 **77%**

Project in or access Communities of Concern



13

How the CTP Addresses What we Heard

Strategies and Near-Term Actions

- New Mobility Roadmap: Equitable access to technology, electrification
- Over half of near-term actions are specifically linked to needs heard in CBTP outreach
- Partnerships for connected mobility
- Strategies set up framework to continue planning for priority issues, e.g. safety legislation, trail planning, multimodal corridor planning, partnerships on regional initiatives



14

Summary of Changes

Since July presentation on core recommendations of 2020 CTP:

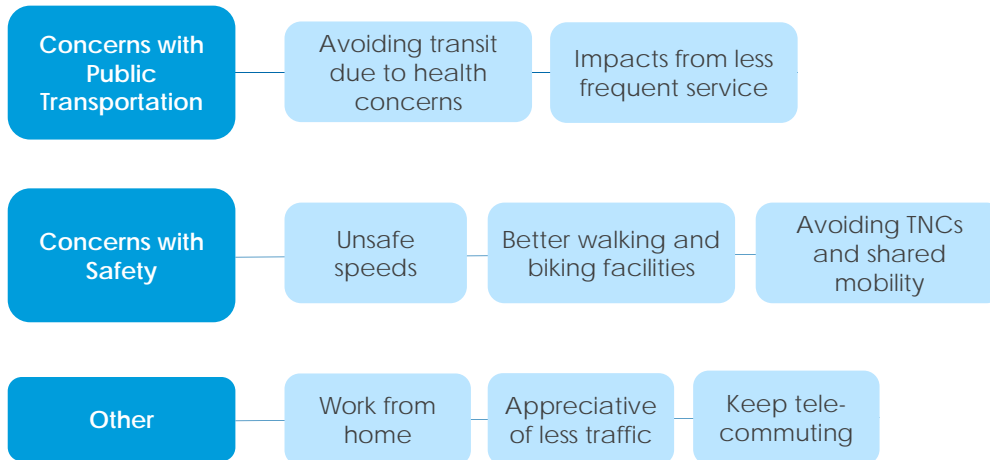
- Removed Howard Terminal Gondola (*2 letters included in Attachment A*)
- Moved Dumbarton Rail/Group Rapid Transit to 30-year List & adjusted Decoto Road Complete Streets/Dumbarton Corridor project bundle
- Quarry Lakes Parkway: Segments 1-4 in 10-year List
- Minor project cost, name, and programmatic category changes including grade separation bundle

All detailed in memo and reflected in Attachment B: Draft Final Project List



COVID-19

Total: ~500 comments

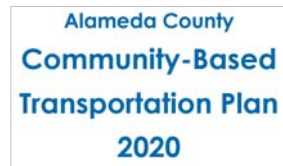
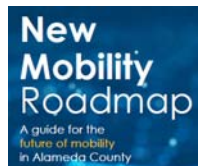


Thank you to all agencies involved!



Today's Recommended Action

- Adopt 2020 Countywide Transportation Plan and companion documents, Community-Based Transportation Plan and New Mobility Roadmap



www.alamedactc.org/countywidetransportationplan





**Alameda Countywide
Transportation Plan**
2020

Thank You

For more information, visit
www.AlamedaCTC.org

Alameda County Transportation Commission • 1111 Broadway, Suite 800
Oakland, CA 94607 • 510.208.7400