



## Presentation Overview

1. Project Background and Overview
  - Process and Key Elements
  - Roadmap Hierarchy
2. Actions and Initiatives
3. Near Term Priority Actions
4. Next Steps

## Project Background

- Initiated by Alameda CTC in 2019 to **proactively plan for technology** in Alameda County.
- Constitutes the **technology element** of the 2020 Countywide Transportation Plan (CTP).
- Alameda CTC formed the **Technology Working Group** (TWG) comprised of members of local jurisdictions from each Planning Area and transit agencies.



## Key Outcomes of the Roadmap

### How will the Roadmap be used?

- **Strategic plan** to harness opportunities and manage risks
- **Identify and form partnerships**
- **Guidance and coordination** on technology-related issues for Alameda County

### What are key outcomes of the Roadmap?

- **Initiatives**, a plan of action to manage uncertainty
- **Near-term priority actions**, critical starting points
- **A continuing resource** for on-going technology planning and implementation for all partners



## Roadmap Framework

### Roadmap Goals\*

Multimodal and High  
Occupancy  
Safety  
Environment  
Equity and Accessibility  
Service Quality  
Cost efficiency  
Connectivity  
Economy  
Data-sharing and Security

\*reviewed by ACTAC, PPLC, and  
Commission  
in June 2020

### Initiative

Action

Action

Action

Action

Near-term  
Priority  
Actions



# Initiatives



New Mobility Roadmap

7





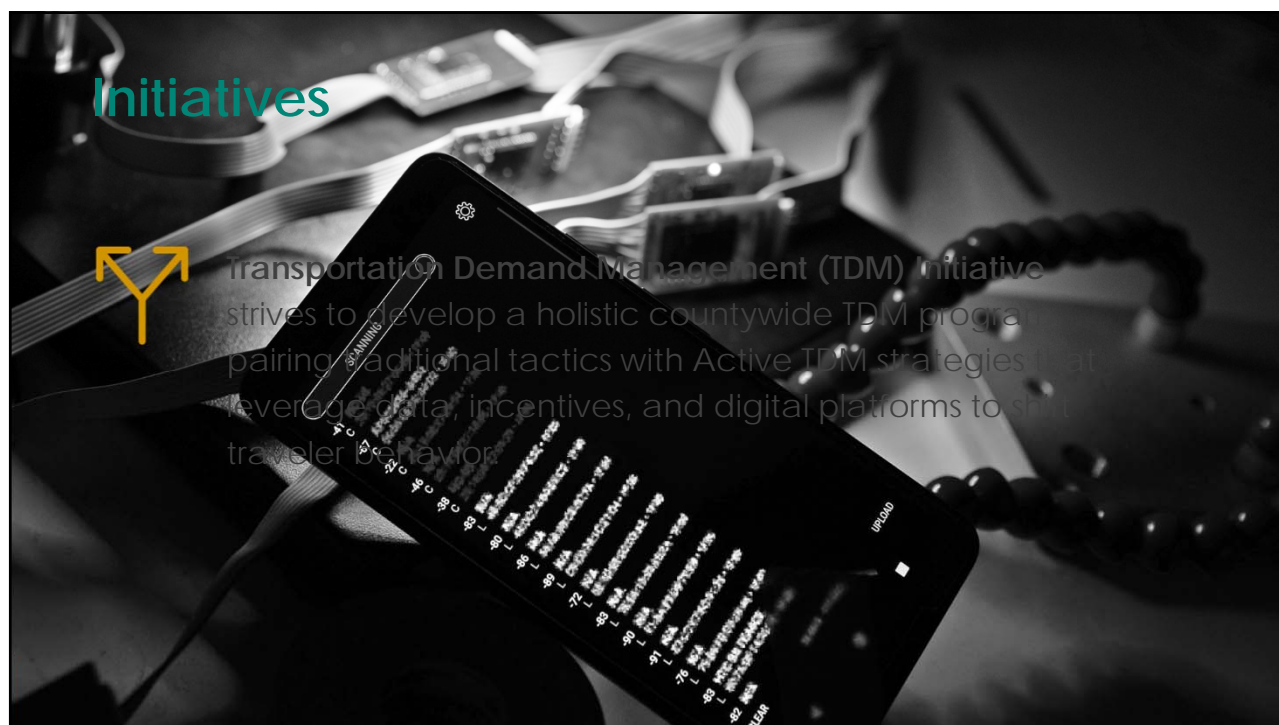


## Initiatives



### Coordinated Intelligent Transportation System (ITS)

Initiative aims to coordinate and promote advanced technology for Alameda County through compatibility for the physical ITS infrastructure, application and communication across jurisdictions and transportation agencies.



## Initiatives



Transportation Demand Management (TDM) Initiative strives to develop a holistic countywide TDM program pairing traditional tactics with Active TDM strategies that leverage data, incentives, and digital platforms to shift traveler behavior.



## Initiatives

 **Electric Mobility Initiative** is intended to establish a coordinated approach to promote electrified mobility, establish electric vehicle charging stations, and improve user access.

 **ALAMEDA**  
COUNTY

New Mobility Roadmap

11



## Initiatives

 **Equity and Accessibility Initiative** will be an ongoing effort to support new mobility and to promote equitable outcomes for all communities.



## Initiatives



Mobility Coordination and Innovation Initiative is intended to produce a framework to explore and facilitate sharing knowledge and guidance to effectively address new mobility technologies where a coordinated approach is critical.

## Initiatives



Data and Automation Initiative identifies ways for Alameda County to address emerging trends for data and automation within the county's transportation system.





## Approach

### Public Benefit

- Relationship to the Goals
- Cross-cutting benefits

### Urgency

- Opportunity for Action
- Avoids Risk
- Leverages existing effort
- Demonstrated Need

Near-term  
Priority  
Actions



## Near-Term Priority Actions



**Pilot an innovative major transit corridor** to facilitate corridor-wide transit priority technology installation and integration.



Develop a **Countywide ITS Strategy** to coordinate system functionality across jurisdictions and identify needs and gaps related to ITS infrastructure.



Explore and gather **equity-related best practices** and efforts related to new mobility technologies and services.



**Pilot a Mobility Hub** building on existing local and regional efforts that will test and evaluate effective approaches to connecting travelers to transit hubs.



## Feedback and Next Steps

- Seeking Feedback on
  - Are there efforts that you are working on that you don't see reflected in the Initiatives?
  - Do you have any questions on near-term Actions?
  - Are there any near-term actions your agency is leading that we could coordinate with?
- Next Steps
  - Incorporate feedback and develop the Roadmap report to include in the 2020 CTP



