

# I-80 GILMAN

## I-80/Gilman Street Interchange Improvement



Presented to  
Alameda CTC Programs and Projects Committee (PPC)  
September 14, 2020



## Project Actions

I-80 GILMAN

1. Adopt Resolution #20-010 agreeing to hear resolutions of necessity (RON) should an eminent domain action be required to acquire property for construction of Phase 2 of the Project. This requires a four-fifths affirmative vote by the Commission (18 Members or Alternatives); and
2. Authorize the Executive Director or designee to execute Amendment No. 6 to Professional Services Agreement No. A15-0034 with Parsons Transportation Group, Inc. (PTG) for an additional amount of \$1,453,000 for a total not-to-exceed amount of \$11,673,000 and a 30-month time extension to complete the design for Phase 2 of the Project, inclusive of right-of-way (R/W) acquisition and bid support services, and to provide design support services during construction and through project completion.

## Project Need

I-80 GILMAN

### Existing Conditions

- » Higher than average rates of injury collisions
- » Lack of safe pedestrian and bicycle routes to access recreation areas west of I-80
- » Significant roadway deficiencies
- » Excess left turn vehicle queue lengths on Gilman Street
- » Gap in the San Francisco Bay Trail



3

## Project Purpose

I-80 GILMAN

### Project Benefits

- » Improve safety for motorists, pedestrians and bicyclists
- » Reduces congestion and improves mobility
- » Simplifies traffic operations, navigation and mobility at the interchange
- » Shortens queues
- » Reduces turning conflicts and improves merging
- » Improves local and regional biking facilities



4

# Project Overview

I-80GILMAN

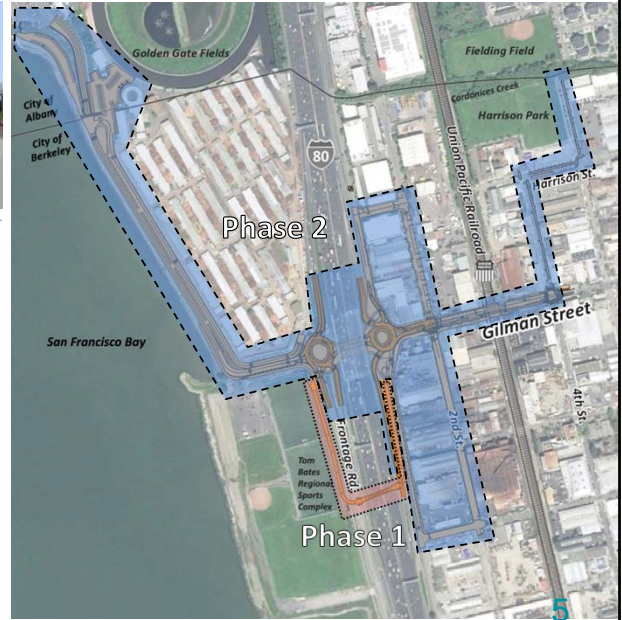
## Phase 1- POC

Construction Phase: \$21.395 M  
 Funding:  
 STIP - \$16.816 M  
 ATP- \$ 4.152 M  
 Local - \$427 K



## Phase 2- Roundabouts and other work

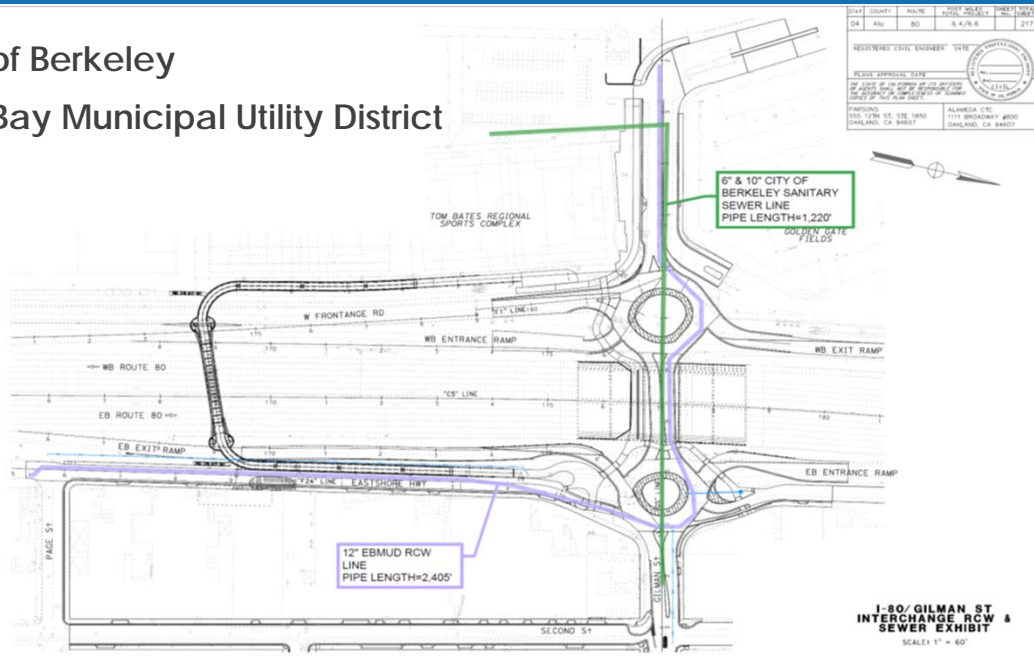
Construction Phase: \$25.979 M  
 Funding: STIP - \$21.968 M  
 Local - \$4.011 M



# Partnership Elements

I-80GILMAN

- » City of Berkeley
- » East Bay Municipal Utility District



For illustrative purposes.

I-80/ GILMAN ST INTERCHANGE RCW & SEWER EXHIBIT  
 SCALE 1" = 60'



# Project Schedule

I:80GILMAN

## Phase 1

- ☑ Right of Way Certification – obtained June 29, 2020
- ☑ CTC Vote August 13, 2020 (\$20.968 M)
- » Advertisement –Late Sept 2020/Early Oct 2020
- » Bid Opening – End of Nov 2020
- » Award – Dec 2020/Jan 2021
- » Construction – Beg. 2021 to Oct 2023

## Phase 2

- » Right of Way Certification\* – December 2020
- » CTC Vote – March 2021\* (\$21.968 M)
- » Advertisement Period – April 2021
- » Bid Opening – June 2021
- » Award – July 2021
- » Construction – Sept 2021 to Dec 2023

\*Right of Way Certification required prior to placement on CTC agenda.  
STIP funds programmed in FY 2019/20 and must be allocated no later than June 30, 2021 CTC meeting.

# Discussion

I:80GILMAN

## Thank You



Alameda County Transportation Commission • 1111 Broadway, Suite 800  
Oakland, CA 94607 • 510.208.7400