



2020 Countywide Transportation Plan: Draft Recommendations

A Presentation to BPAC

Kristen Villanueva, Senior Transportation Planner

September 17, 2020

Today's Objectives

- Provide update on recommendations in Draft 2020 Countywide Transportation Plan
- Provide input on priorities for safety and complete streets



Feedback received during public outreach in September will be incorporated as staff finalizes the CTP for adoption later this year.



What is the CTP?

What

A long-range planning and policy document that guides future transportation decisions for all surface transportation modes and users in Alameda County.

Vision

Alameda County residents, businesses and visitors will be served by a premier transportation system that supports a vibrant and livable Alameda County through a connected and integrated multimodal transportation system promoting sustainability, access, transit operations, public health and economic opportunities.

Goals



Accessible, Affordable, and Equitable



High Quality and Modern Infrastructure



Safe, Healthy and Sustainable



Economic Vitality



Primary Outcomes of the CTP



Needs Assessment



Community-Based Transportation Plan



10-Year Priority Projects and Programs



Strategies and Near-Term Actions



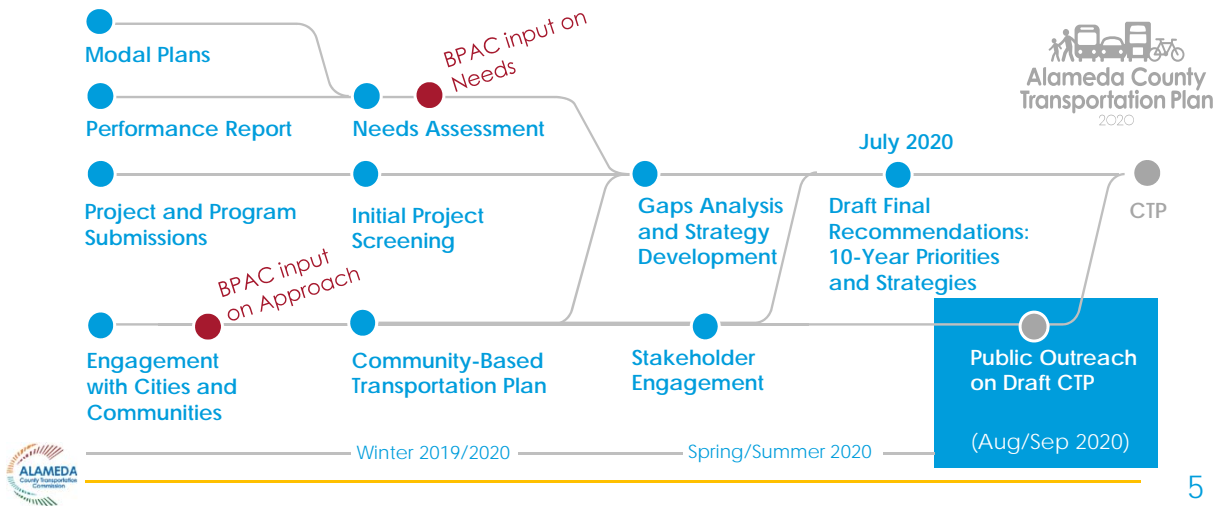
Long-Term Projects and Programs

Core Recommendations



Where We Are in the Process

Plan Development and Public Outreach



BPAC Presentations

- November 2019 – 2020 CTP Approach
- February 2020 – Needs Assessment for Active Transportation

What we heard:

- Support for higher degree of protection and comfort for bicyclists on roadways/interchanges and at intersections
- Consider automated speed enforcement
- CTP should look at environmental and new technology issues as well as pavement condition for bicycling

Currently Seeking Input on Draft CTP



Survey link: bitly.ws/9ymi

www.alamedactc.org/countywidetransportationplan



OVERVIEW

TRANSPORTATION NEEDS

PROJECTS AND STRATEGIES

MAKE YOUR VOICE HEARD!

RESOURCES

The Draft 2020 Alameda Countywide Transportation Plan (Draft 2020 CTP) is ready for public review and feedback! We appreciate your time during the on-going COVID-19 pandemic to learn more about transportation planning in Alameda County and help us finalize the plan. Explore this website to learn more about the Draft 2020 CTP and its draft recommendations for transportation priorities in Alameda County. Alameda CTC will use responses we receive from the **survey** and other engagement activity planned through September to revise these recommendations in the Final 2020 CTP, which is slated for adoption by the Commission by the end of 2020.



Core Recommendation: 10-Year Priority Projects and Programs



10-Year Priority Projects and Programs



91 projects
5 on-going programs
See Attachment B



What the 10-Year List Accomplishes



Increases bus efficiency and walking and biking safety through **complete, multimodal corridors**



Supports **transit facilities** for maintenance and operations



Creates safe facilities through **greenways and trails**



Enhances multimodal safety of **interchanges** and **creates more HOV capacity**



Significantly improves **rail safety and connectivity**



Supports **goods movement** with **infrastructure and emission reduction** projects



Expands **rail and ferry capacity** and **increases multimodal access** to stations and terminals



Adapts our infrastructure to **sea level rise**

91 projects
5 on-going programs
See Attachment B



Programs & Ongoing Funding Commitments

Long-Standing Commitments Reinforced in CTP



Safe Routes to Schools



Affordable Student Transit Pass Program



Paratransit and Senior Mobility



Transit Operations



State of Good Repair (Local Streets & Roads)

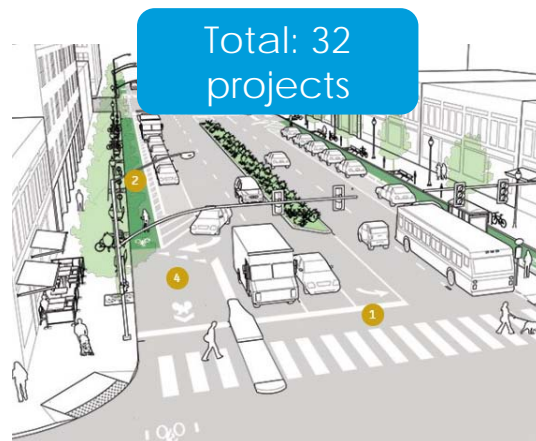


11

10-Year Priorities: Bicycle and Pedestrian Project Highlights

• Multimodal Corridors in all parts of County (examples)

- San Pablo Avenue (North)
- 40th Street (North)
- E14th/Mission and Fremont Blvd (Central, South)
- Lewelling Blvd (Central)
- Decoto Road (South)
- Thornton Avenue (South)
- West Las Positas Bicycle Corridor (East)
- Dublin Blvd Extension (East)



Source: NACTO Design Guide



12

10-Year Priorities: Bicycle and Pedestrian Project Highlights

• Greenways and Trails

- East Bay Greenway
- Iron Horse Trail Completion
- Niles Canyon Phase 1
- San Leandro Creek Trail
- Greenway and Mandela Connector (Emeryville)
- Bay Trail and Connections
- Bay Bridge The Link
- Sabercat Trail
- Bancroft Avenue Greenway (Oakland)



13

How We Plan to Use the 10-Year List



Identify nearer-term projects and programs that best advance CTP goals and objectives



Prioritize within the Alameda CTC Capital Program



Establish near-term priority set of projects and programs to inform future discretionary funding decisions



Advocate for funding from regional, state, and federal competitive grants and stimulus measures



14

Core Recommendation: Strategies and Near-Term Actions



Strategy Categories

	Safe Systems Approach
	Complete Corridors Approach
	Partner to Advance Regional and Megaregional Issues
	Transit Accessibility & TDM
	Automated and Electric Future and New Mobility

Equity is a cross-cutting strategy.







Moving from Strategies to Actions

Strategy Categories



Near-Term Actions

-  Advance Equity
-  Safe Systems Approach
-  Complete Corridors Approach
-  Partner to Address Regional and Megaregional Issues
-  Transit Accessibility & Transportation Demand Management
-  Automated and Electric Future and New Mobility

-  Identify specific key roles for Alameda CTC
-  Will be incorporated into the agency workplan
-  Can be implemented within next 5 years
-  Will continue to evolve as opportunities arise






Moving from Strategies to Actions

Strategy Categories



Near-Term Actions Examples

-  Advance Equity
-  Safe Systems Approach
-  Complete Corridors Approach
-  Partner to Address Regional and Megaregional Issues
-  Transit Accessibility & Transportation Demand Management
-  Automated and Electric Future and New Mobility

- **Support projects that address high-injury network & COCs
- **Support/lead multimodal corridor projects
- **Partner to improve transit fare integration and seamless transit connections
- Partner to advance express lanes paired with bus prioritization
- **Continue to expand and enhance the Student Transit Pass Program
- Provide local assistance and support info exchange for technology trends

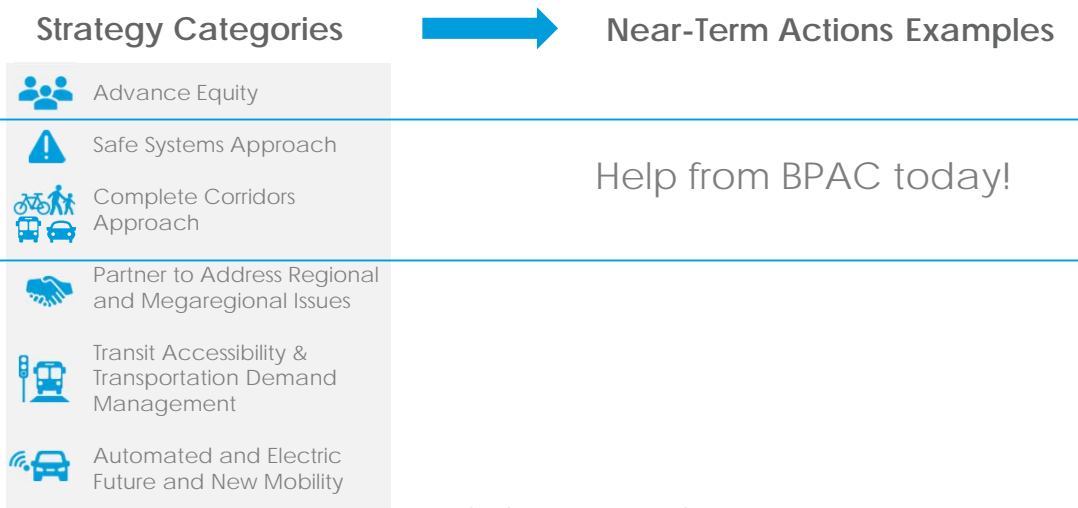
Equity is a cross-cutting strategy denoted with **.



COVID-19 and the CTP



Moving from Strategies to Actions



Discussion: Safe System Approach

What are priority near-term actions?

1. ** Support projects that address the high-injury network, with a particular focus on projects that address the HIN in Communities of Concern (COCs).
2. ** Support legislation that enables automated speed enforcement.
3. ** Reform the speed limit setting process to align with a Safe Systems Approach to allow for context-appropriate speed limit setting.
4. Facilitate coordination with Caltrans to expedite multimodal treatments at interchanges.
5. Implement the Rail Safety Enhancement Program to improve safety of at-grade crossings countywide.
6. ** Support implementation of SR2S school site assessments, including exploration of potential for a mini-grant program.
7. ** Expand Access Safe Routes equity program within SR2S program.



Discussion: Complete Corridors Approach

What are priority near-term actions?

1. ** Support and lead multi-jurisdictional, multimodal corridor projects that address access, safety, and comfort for all modes; and incorporate creative curb management strategies and modern signals. Glean lessons learned to inform other corridor projects.
2. Facilitate coordination with Caltrans and other relevant stakeholders to expedite multimodal complete streets treatments in Caltrans right-of-way.
3. ** Support project development and delivery for interjurisdictional urban greenway and trail projects, many of which traverse COCs.
4. Seek to engage navigation app companies on policies to reduce cut-through traffic in communities, building off discussions cities or regional partners have had to date.
5. ** Develop model truck and private coach bus parking policies and programs.



Next Steps

Prepare
Draft Plan



Summer/
Fall 2020

Online Survey
on Draft Plan



Summer/
Fall 2020

Online Focus
Groups



September
2020

Final Plan
Adoption



Fall/Winter
2020



23

Don't forget to take the survey!

- Walking and Biking
- Public Transportation
- Roads and Freeways
- New Mobility and Technology
- Environmental Considerations
- Equity Considerations
- Open-Ended Comments for CTP and COVID-19



Participate!

Survey link: bitly.ws/9ymi

www.alamedactc.org/countywidetransportationplan



24



Thank You

For more information, visit
www.AlamedaCTC.org

Alameda County Transportation Commission • 1111 Broadway, Suite 800
Oakland, CA 94607 • 510.208.7400