

Alameda County Transportation Plan 2020

Needs Assessment Findings: South County



Foundation for Needs Identification



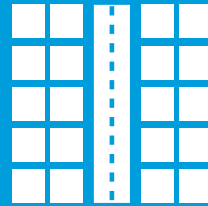
Active Transportation

- 2019 Active Transportation Plan
- 2019 Safe Routes to School Program Evaluation



Freeways

- 2018 LOS Monitoring Report



Arterials

- 2016 Multimodal Arterial Plan



Transit

- 2016 Transit Plan



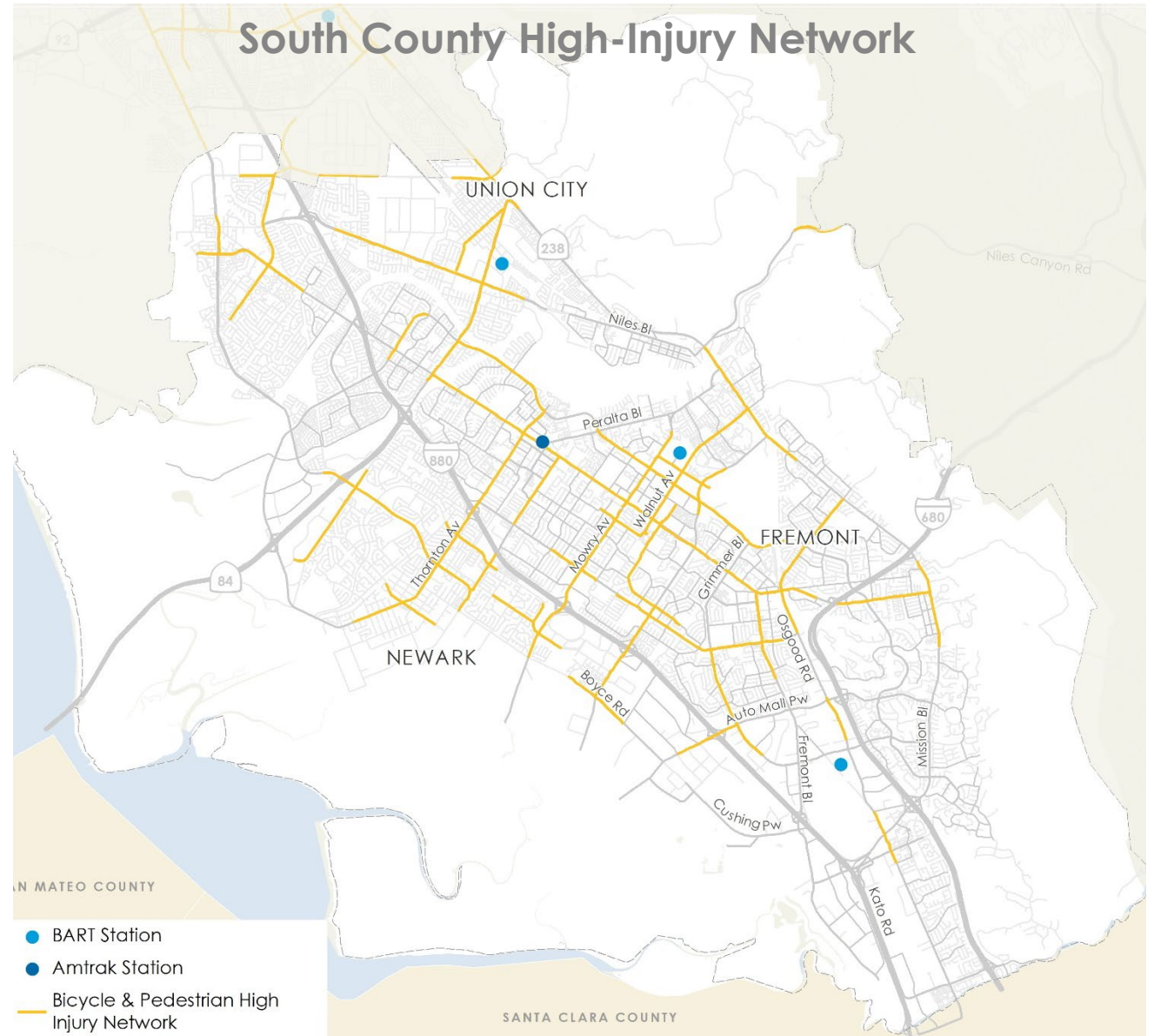
Goods Movement

- 2016 Goods Movement Plan

Active Transportation

Key Challenges/Needs:

- Wide streets with high traffic volumes and speeds create an uncomfortable environment for walking and biking
- Schools and shopping centers located near high-volume intersections and interchanges
- Safety challenges at interchanges and at-grade rail crossings
- Physical barriers hinder a continuous protected network

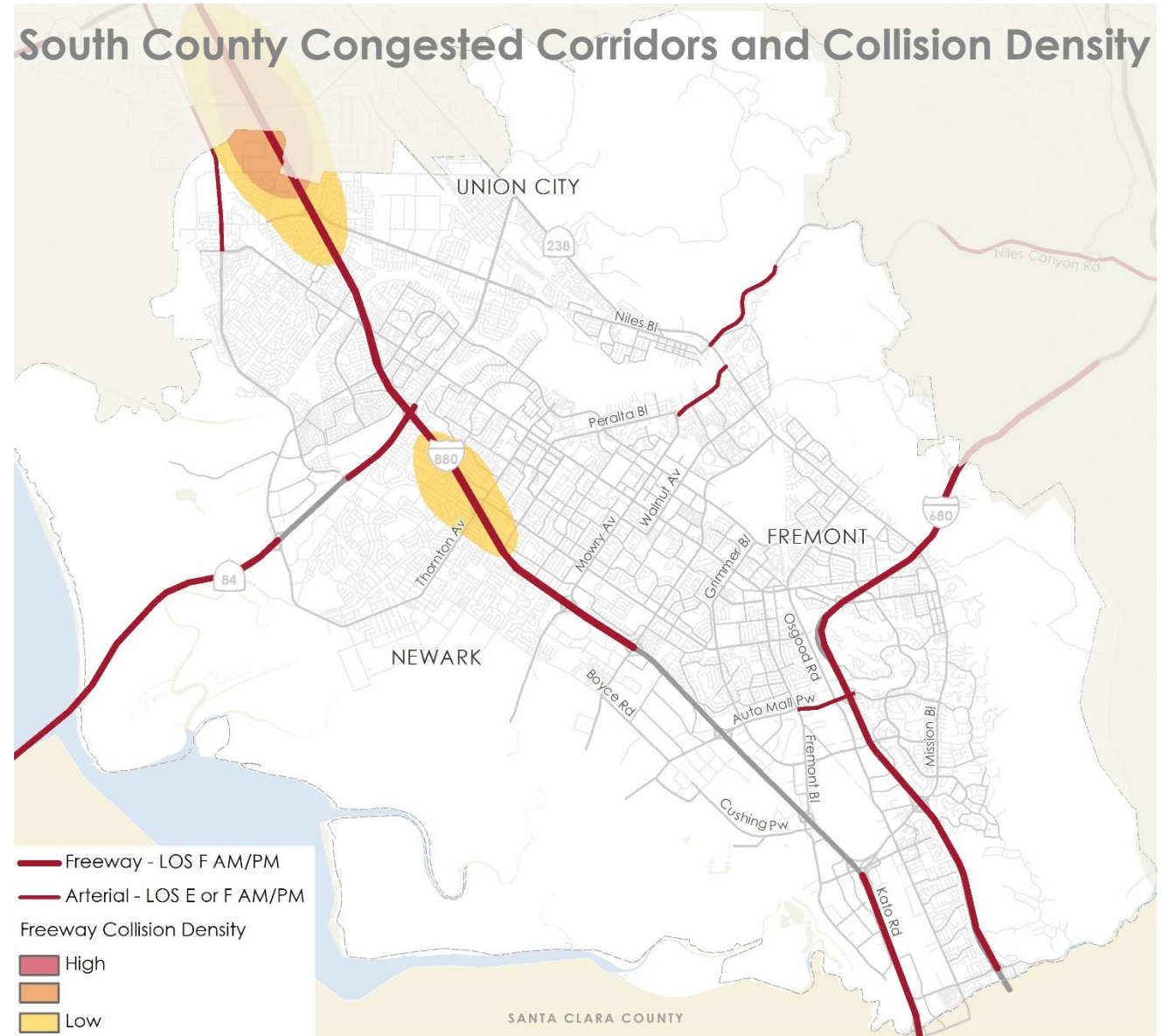


Data Source: Countywide Active Transportation Plan, 2019

Freeways

Key Challenges/Needs:

- Heavy congestion on I-880 leading to the Dumbarton Bridge and on I-680
- Congestion along SR 262 creates backups onto I-880 and I-680
- Cut-through traffic onto local roads
- Limited non-SOV options to access job centers on the Peninsula and in the South Bay

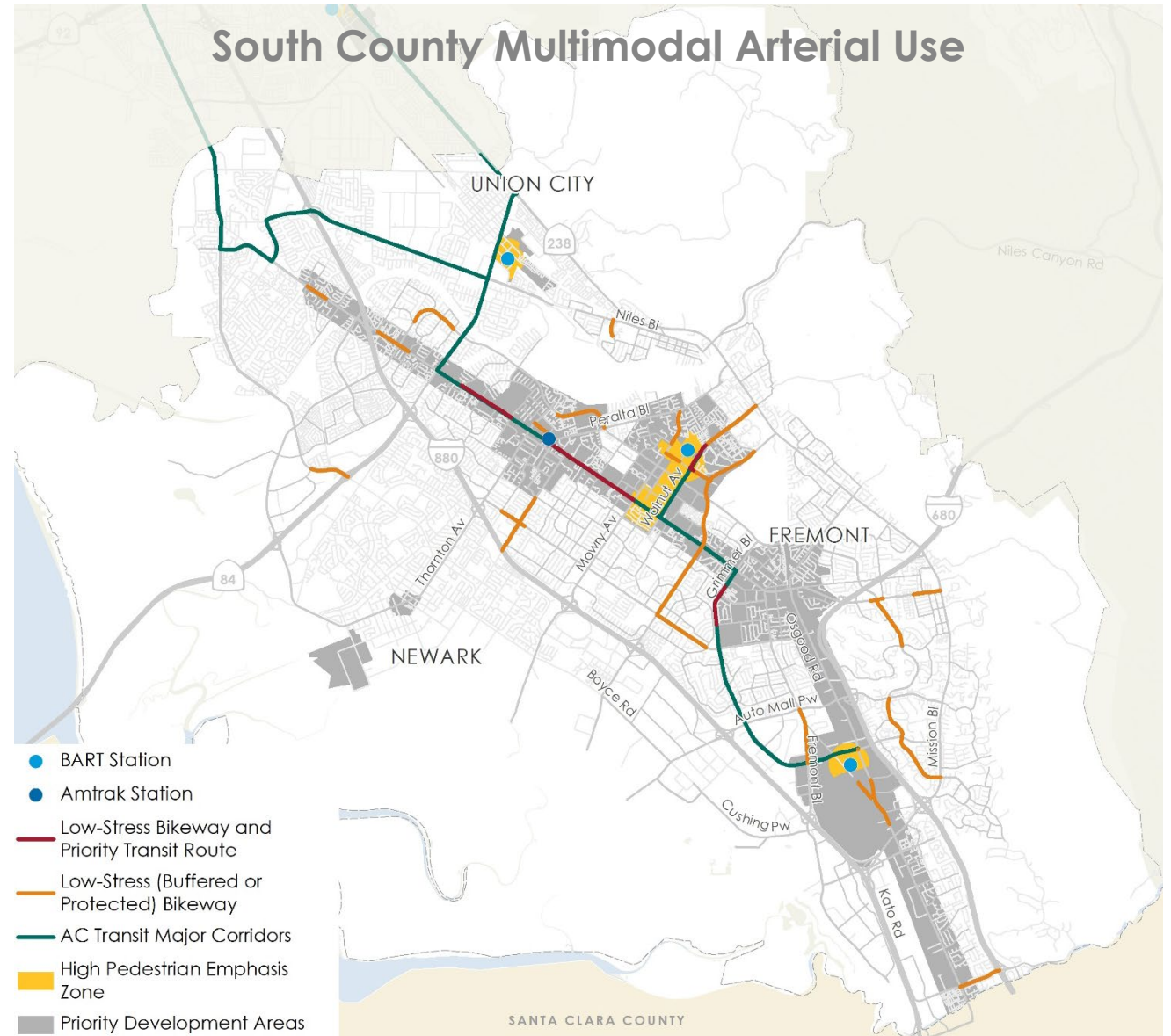


Data Source: LOS Monitoring Report, 2018

Arterials

Key Challenges/Needs:

- Heavy congestion exacerbated by freeway spillovers
- Limited connectivity of local streets increases use of arterials for all modes
- Wide roadways with high volumes and vehicle speeds discourage walking and biking
- Surface parking lot frontages contribute to placemaking challenges

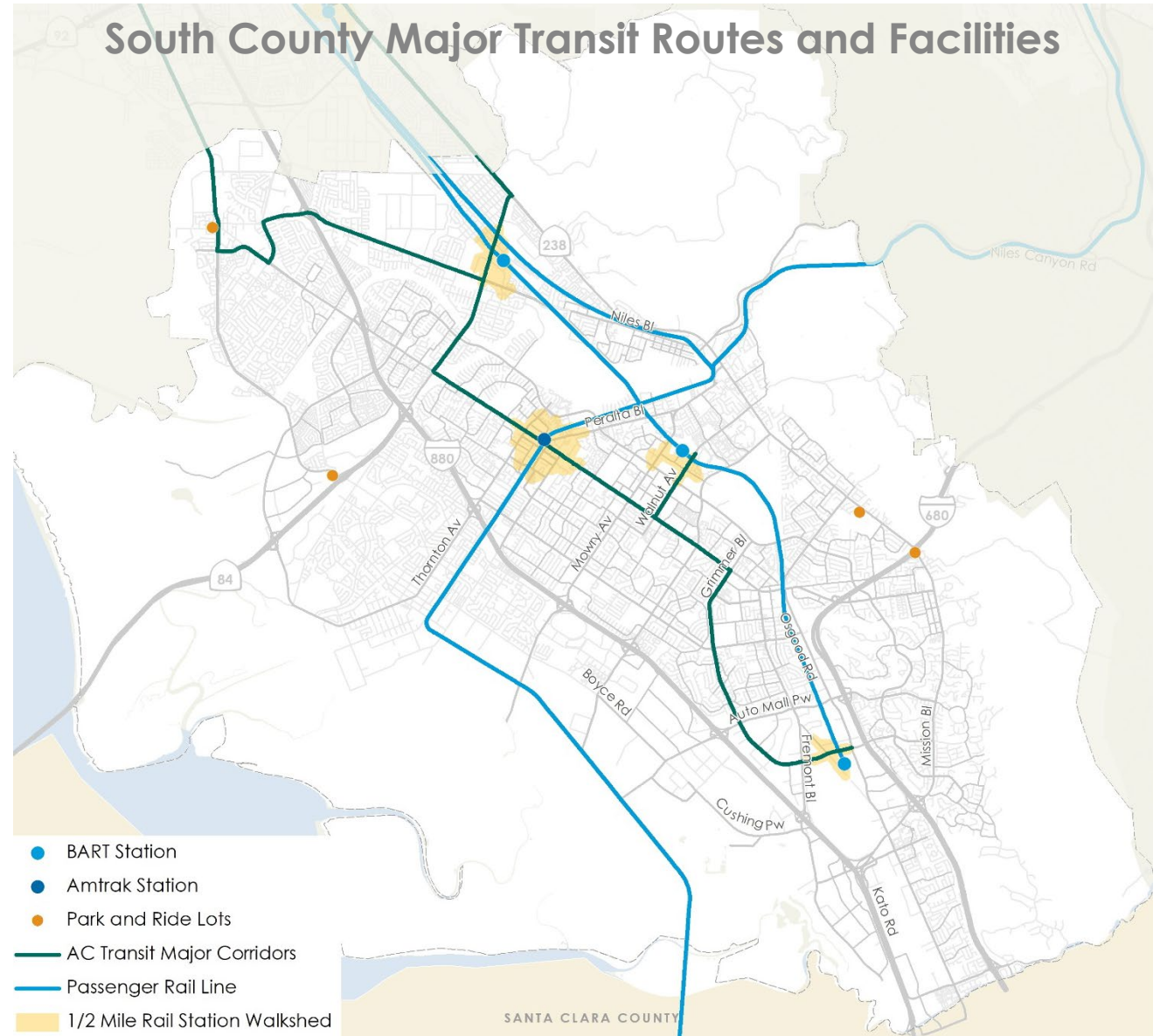


Data Sources: Countywide Transit Plan, 2016; Countywide Active Transportation Plan, 2019; Plan Bay Area 2040, 2017

Transit

Key Challenges/Needs:

- Moderate- to low-density land use in much of South County
- Limited high-frequency service, with significant coverage-frequency tradeoffs
- Limited first/last-mile access to transit stops and stations
- Long travel times and transfers required to access most job centers on the Peninsula and in the South Bay

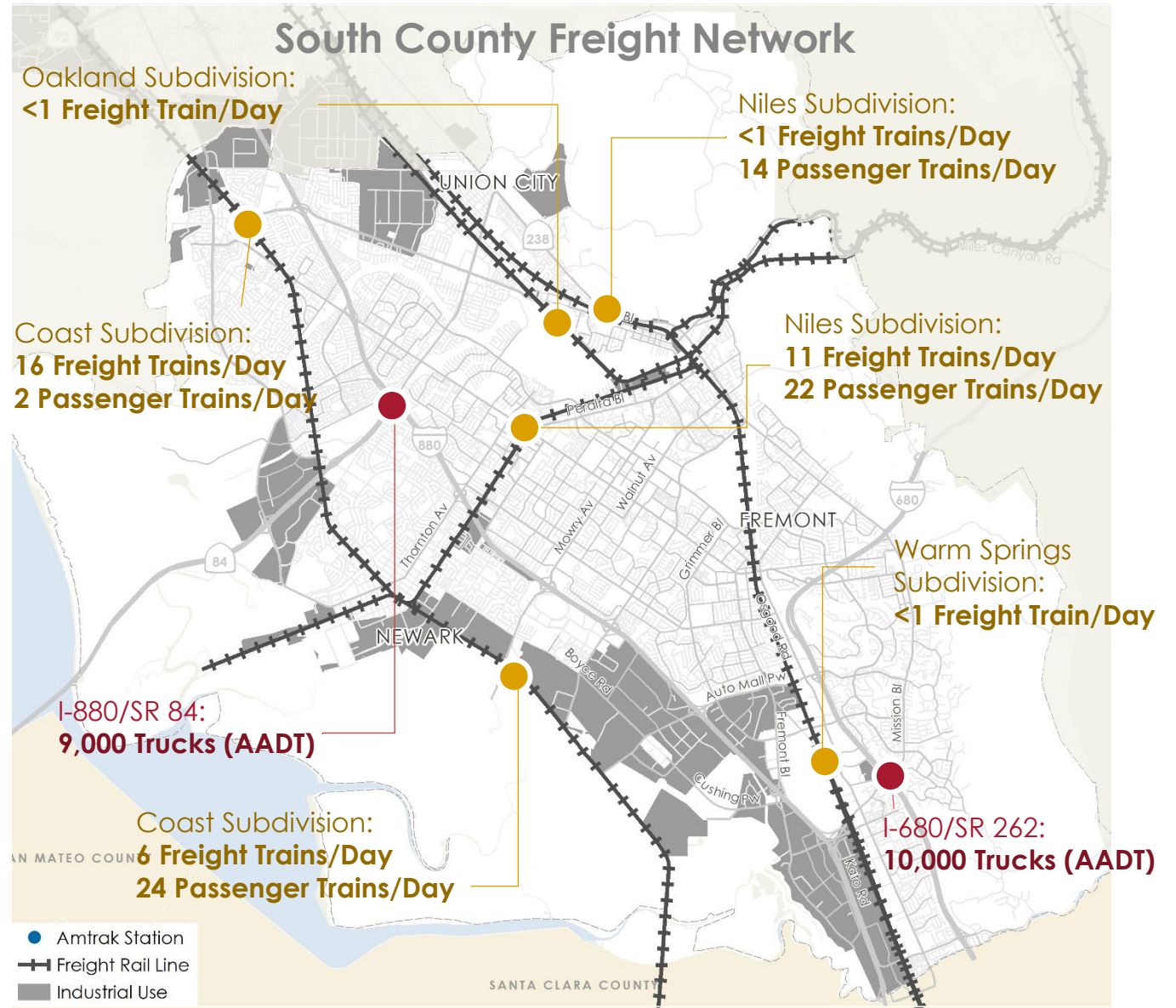


Data Source: Countywide Transit Plan, 2016

Goods Movement

Key Challenges/Needs:

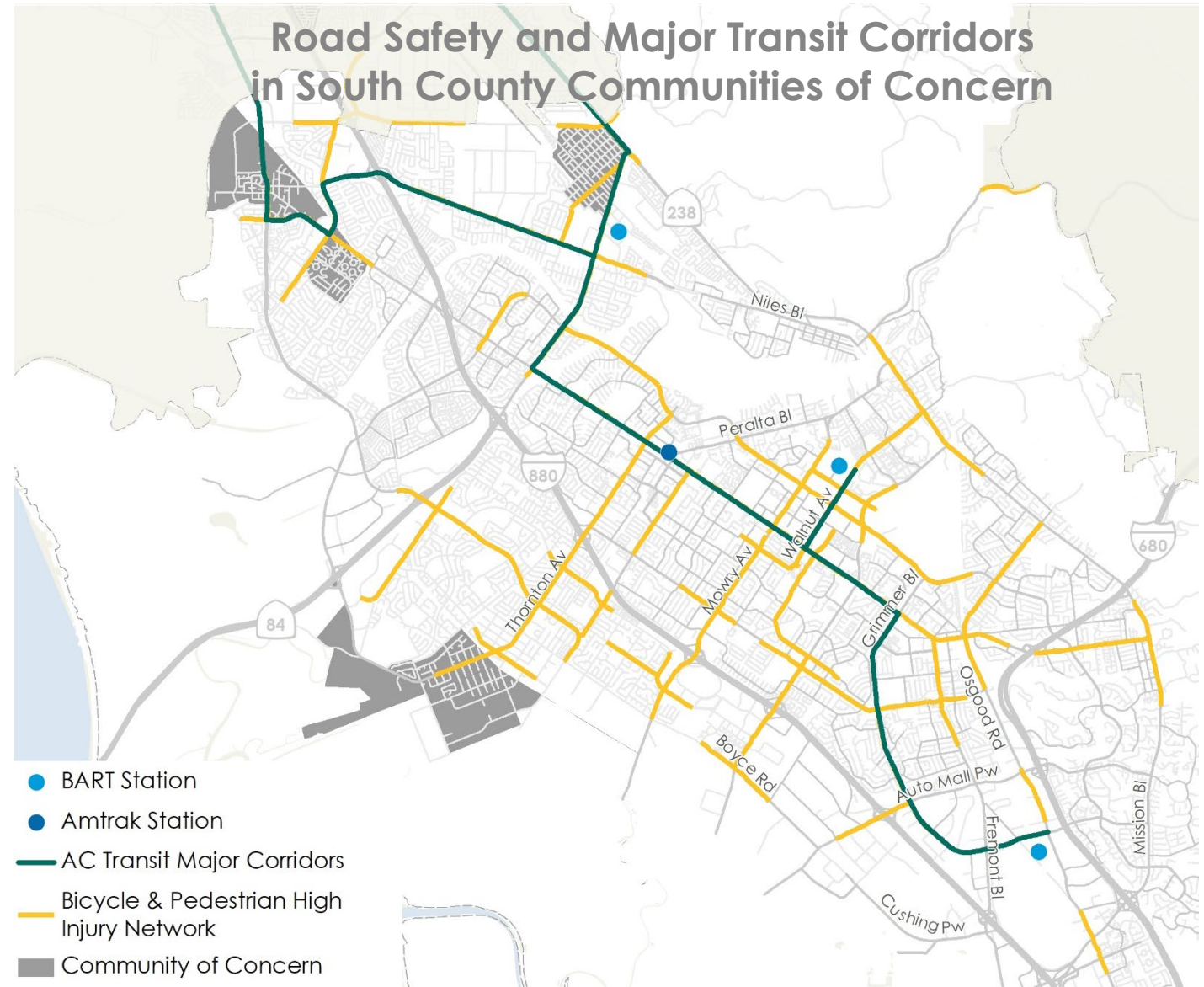
- Substantial delays and highly variable travel times on I-880 and I-680 during peak periods
- High truck volumes on arterials cause wear-and-tear and environmental concerns
- Rail capacity constraints and alignment issues
- Impacts on nearby communities from truck parking, congestion, emissions, and safety, particularly at at-grade crossings



Data source: Countywide Goods Movement Plan, 2016; Caltrans AADT Databook, 2017

Communities of Concern

- **Countywide Community Based Transportation Plan (CBTP)**
- **Outreach in South County CoCs:**
 - Intercept surveys, pop up events, interviews
- **Findings:**
 - Need for transit schedule coordination and affordable transit fares
 - Desire for more frequent bus service during day and off-peak
 - Concern for improved and safe bicycle infrastructure separated from roads



Data sources: Countywide Transit Plan, 2016; Countywide Active Transportation Plan, 2019; MTC 2018

Major Needs in South County



Improved Access to and Connectivity of High-Frequency Transit



Reliable and Competitive Non-SOV Commute Options, Including for Interregional Commutes



Safety Improvements Across All Modes and Users



Improved Travel Time Reliability on Major Corridors