

# Alameda County Transportation Plan 2020

## Needs Assessment Findings: East County



# Foundation for Needs Identification



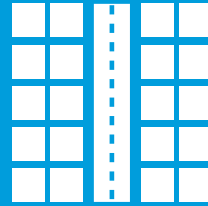
## Active Transportation

- 2019 Active Transportation Plan
- 2019 Safe Routes to School Program Evaluation



## Freeways

- 2018 LOS Monitoring Report



## Arterials

- 2016 Multimodal Arterial Plan



## Transit

- 2016 Transit Plan



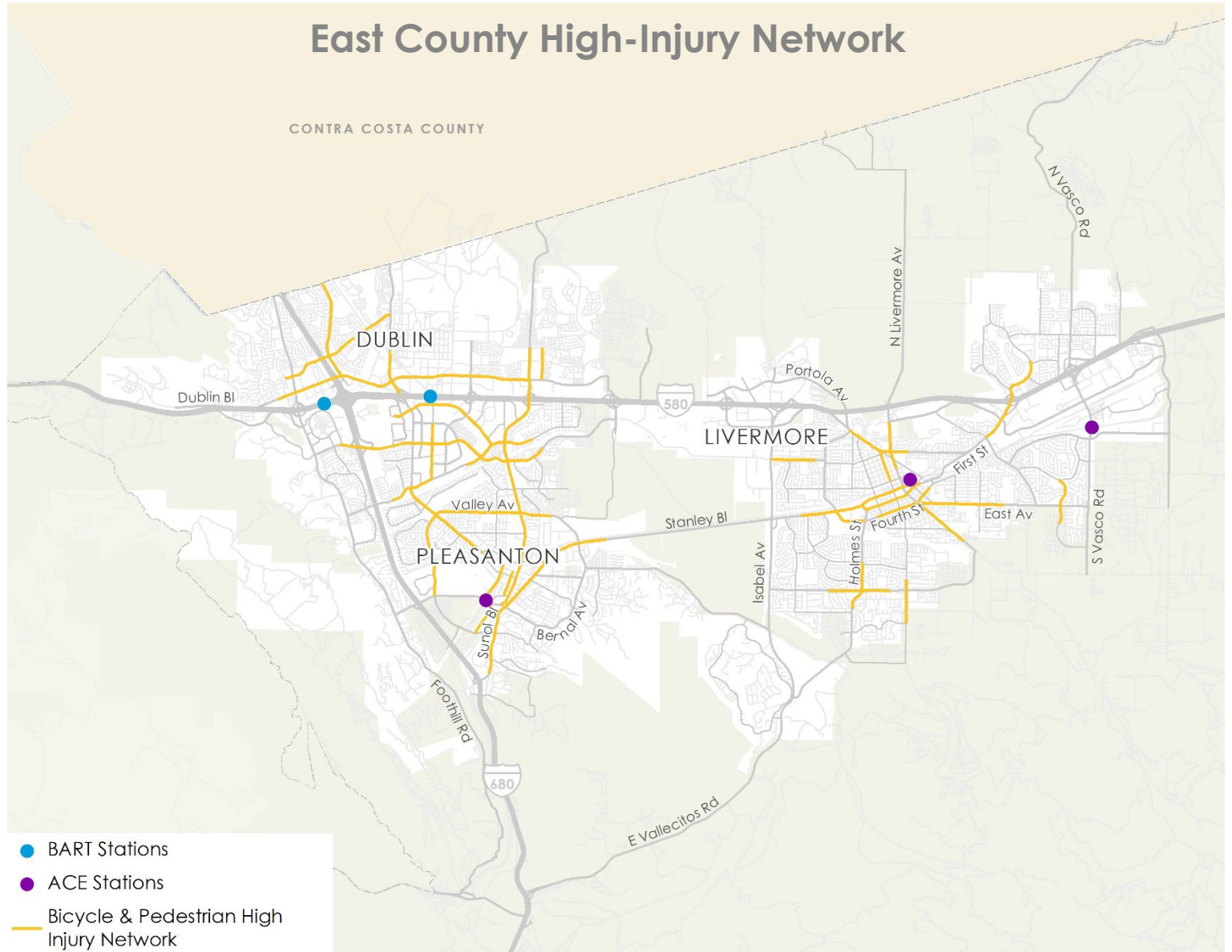
## Goods Movement

- 2016 Goods Movement Plan

# Active Transportation

## Key Challenges/Needs:

- High traffic volumes and speeds create an uncomfortable environment for walking and biking
- Physical barriers hinder network connectivity
- Limited connections to transit stops and stations
- Limited all-ages and abilities network that provides safe routes to schools

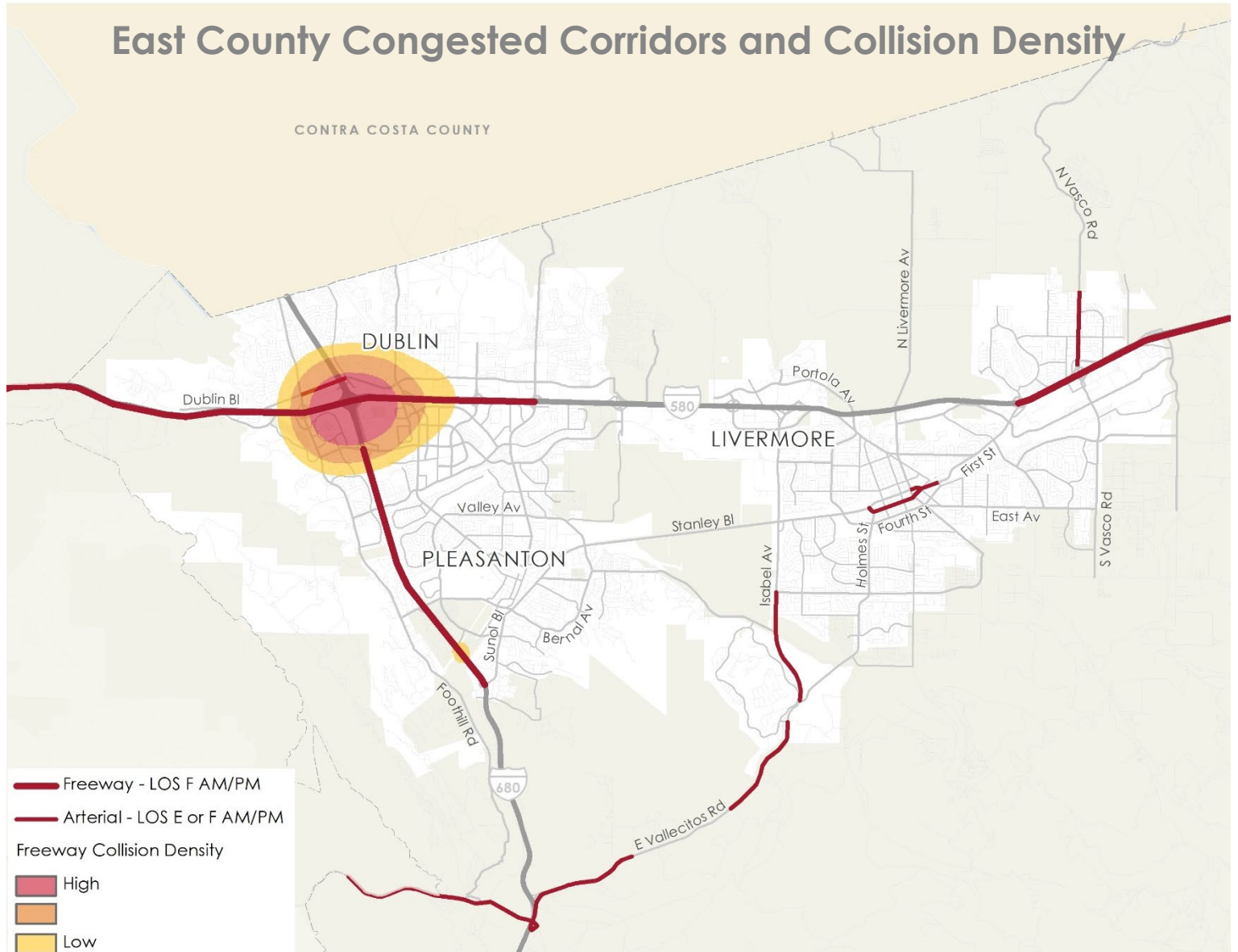


Data Source: Countywide Active Transportation Plan, 2019

# Freeways

## Key Challenges/Needs:

- Bottleneck at the I-580/I-680 interchange, with a high collision density
- Traffic on I-580 eastbound is intensifying during the PM
- Cut-through traffic onto local and rural roads
- Disconnected express lane network
- Limited commute alternatives along the I-680 corridor and eastern I-580 corridor

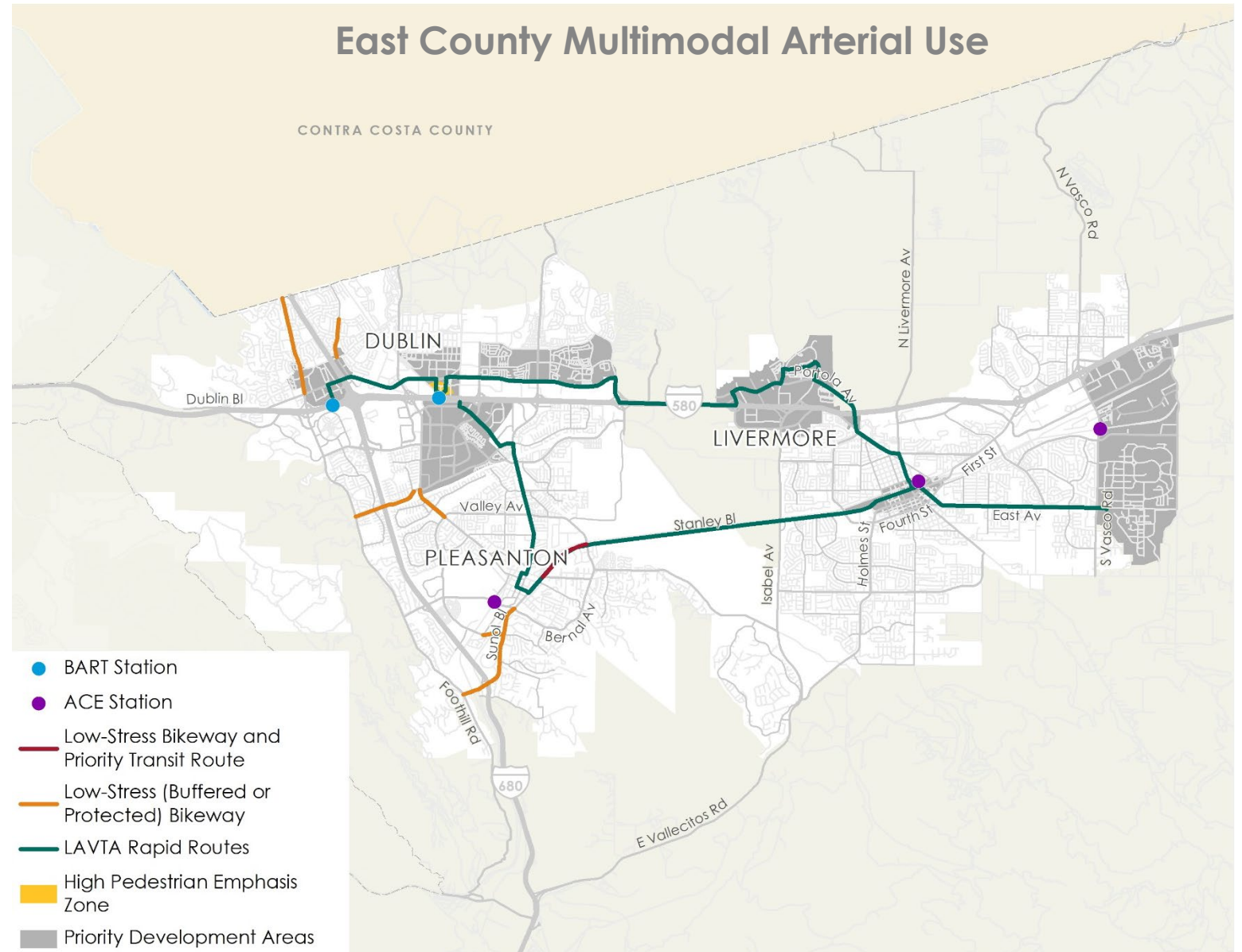


Data Source: LOS Monitoring Report, 2018

# Arterials

## Key Challenges/Needs:

- Wide roadways and traffic limit walking and biking
- Placemaking challenges
- Walking/biking access to bus stops and BART
- Freeway congestion spillover



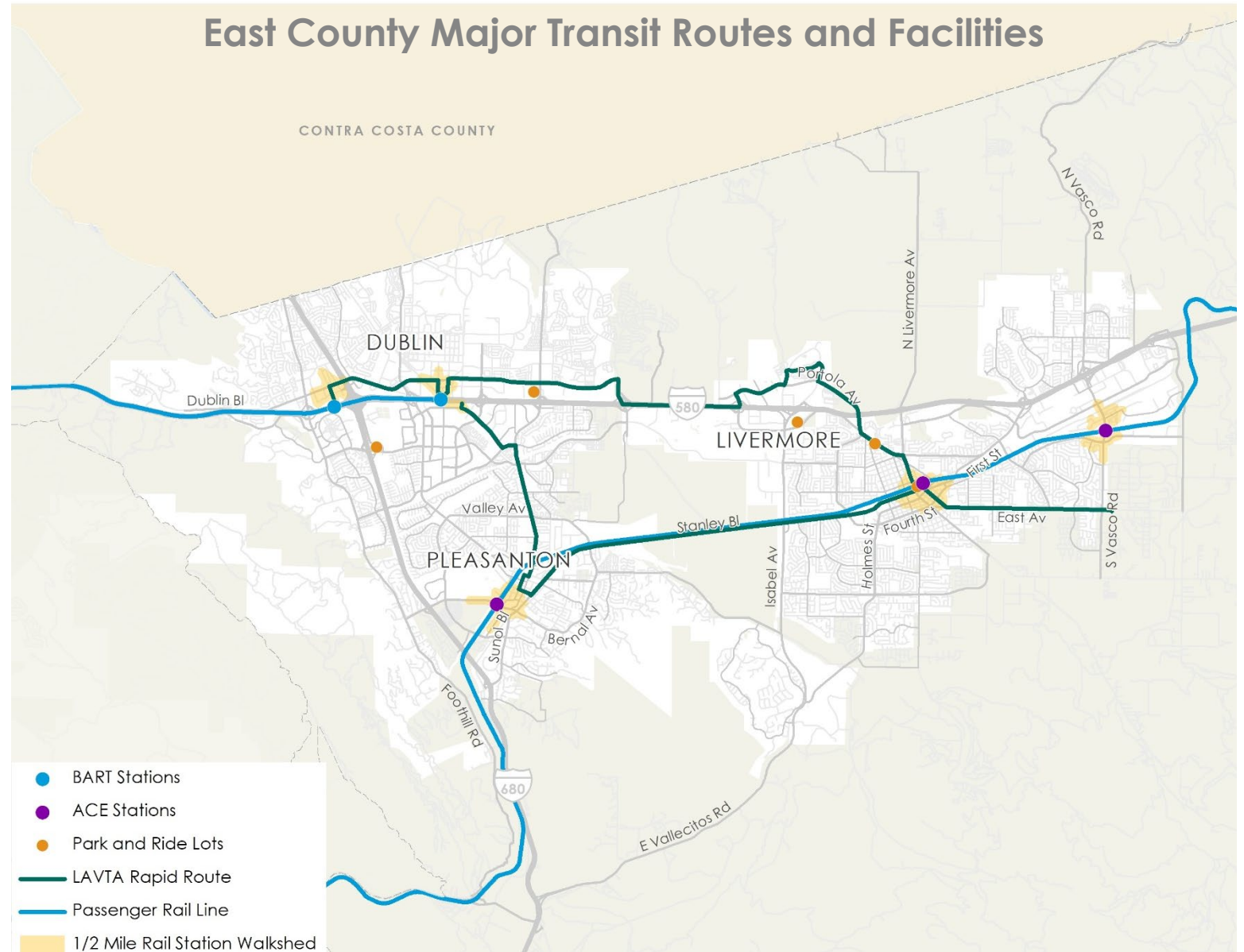
Data Sources: Countywide Transit Plan, 2016; Countywide Active Transportation Plan, 2019



# Transit

## Key Challenges/Needs:

- Moderate- to low-density land use in much of East County
- “First/last-mile” access to transit stops and stations
- Limited coverage of frequent service and commute orientation of existing service
- Schedules and transfer coordination

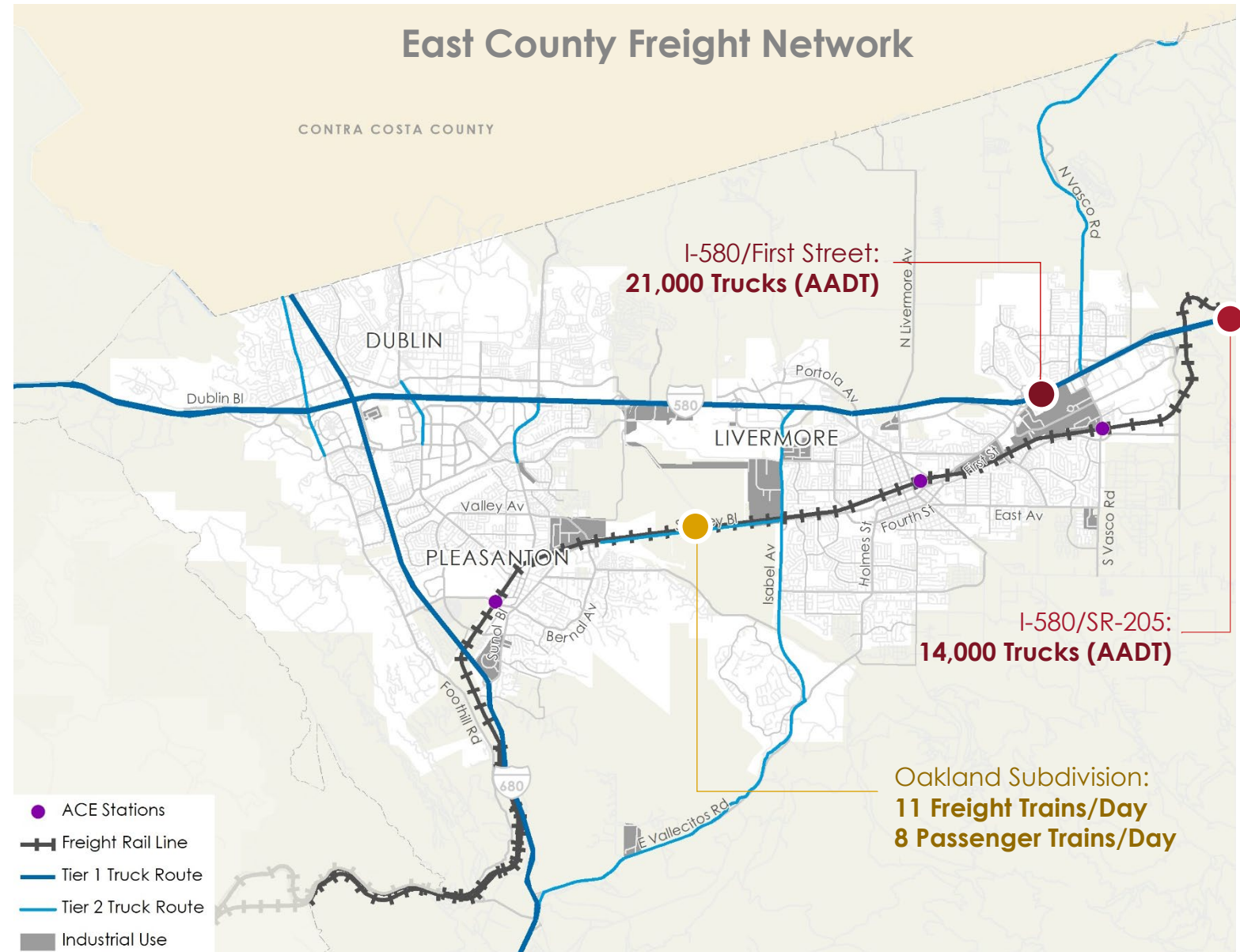


Data Source: Countywide Transit Plan, 2016

# Goods Movement

## Key Challenges/Needs:

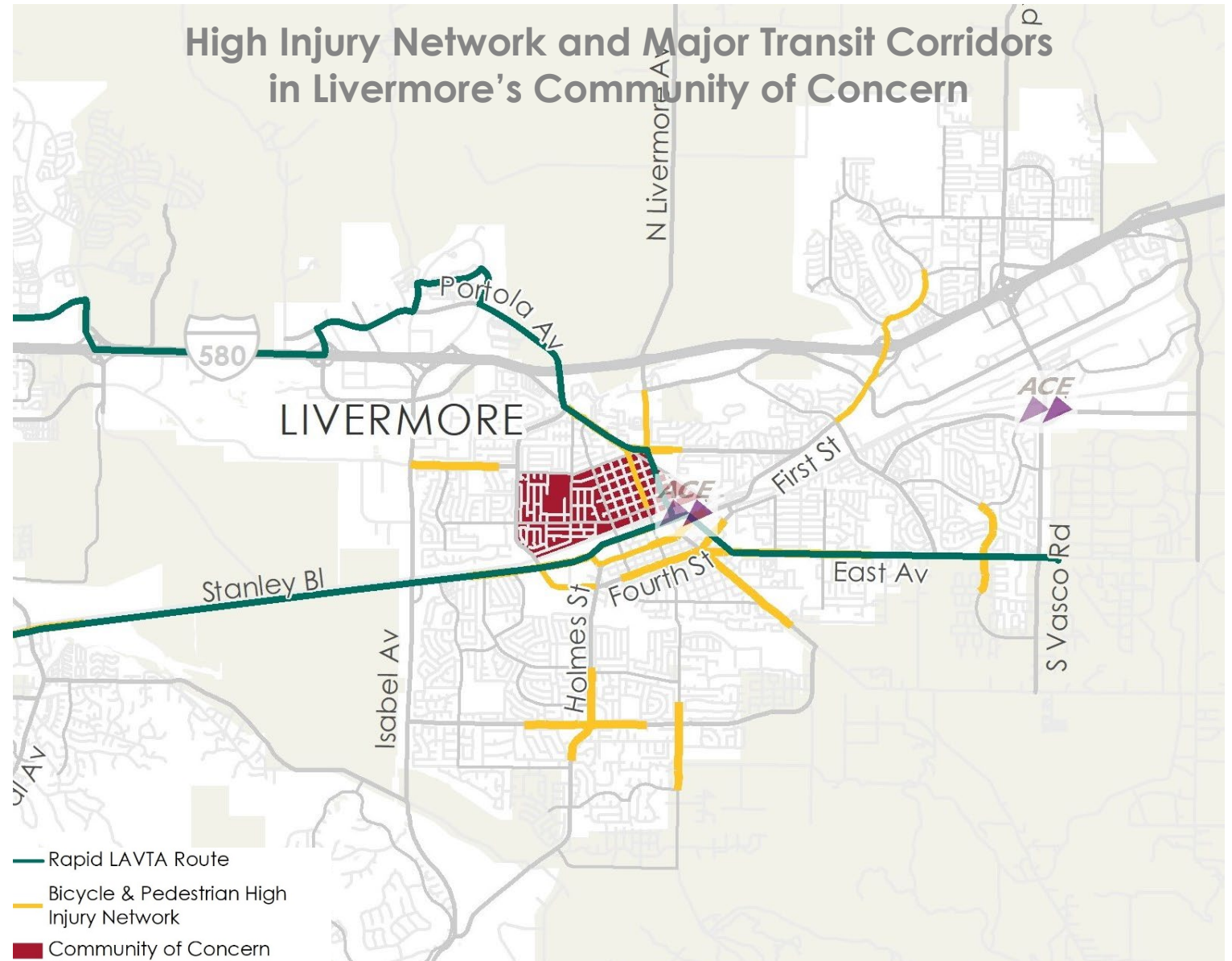
- Very high density of trucks on I-580 at First Street in Livermore
- Substantial delays and variable travel times on I-580 during peak periods
- Preserving truck routes to and from agricultural producers
- Congestion and safety impacts on nearby communities



Data source: Countywide Goods Movement Plan, 2016; Caltrans AADT Databook, 2017

# Communities of Concern

- **Countywide Community Based Transportation Plan (CBTP)**
- **Outreach in Livermore CoC:**
  - Intercept survey at Doolan Park, January 2020
- **Survey findings:**
  - Concerns over high traffic speeds and pavement quality
  - Interest in reliable transit, separated bike lanes and trails





# Major Needs in East County



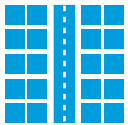
Improved Access to and Connectivity of High-Frequency Transit



Reliable and Competitive Non-SOV Commute Options



Safety Improvements Across All Modes and Users



Improved Travel Time Reliability on Major Corridors