

Alameda County Transportation Plan 2020

Needs Assessment Findings: Central County



Foundation for Needs Identification



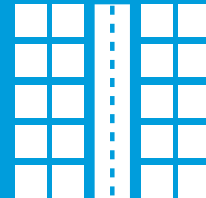
Active
Transportation

- 2019 Active Transportation Plan
- 2019 Safe Routes to School Program Evaluation



Freeways

- 2018 LOS Monitoring Report



Arterials

- 2016 Multimodal Arterial Plan



Transit

- 2016 Transit Plan



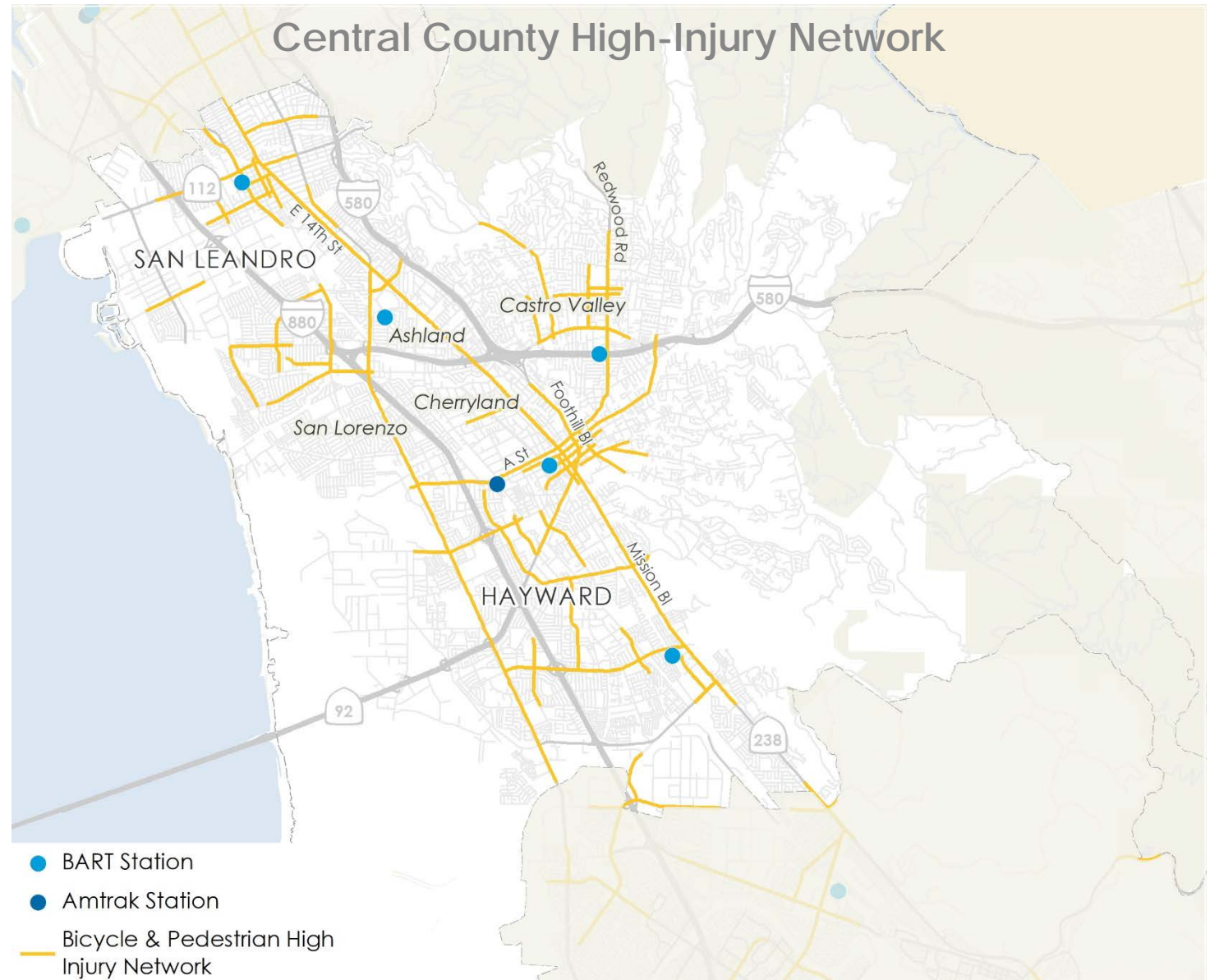
Goods
Movement

- 2016 Goods Movement Plan

Active Transportation

Key Challenges/Needs:

- Wide streets and high vehicle speeds create an uncomfortable environment for walking and biking
- Narrow sidewalks and a limited low-stress bike network
- Access to transit hindered by gaps in the bicycle and pedestrian network
- At-grade rail crossings pose safety challenges, particularly for students walking to school

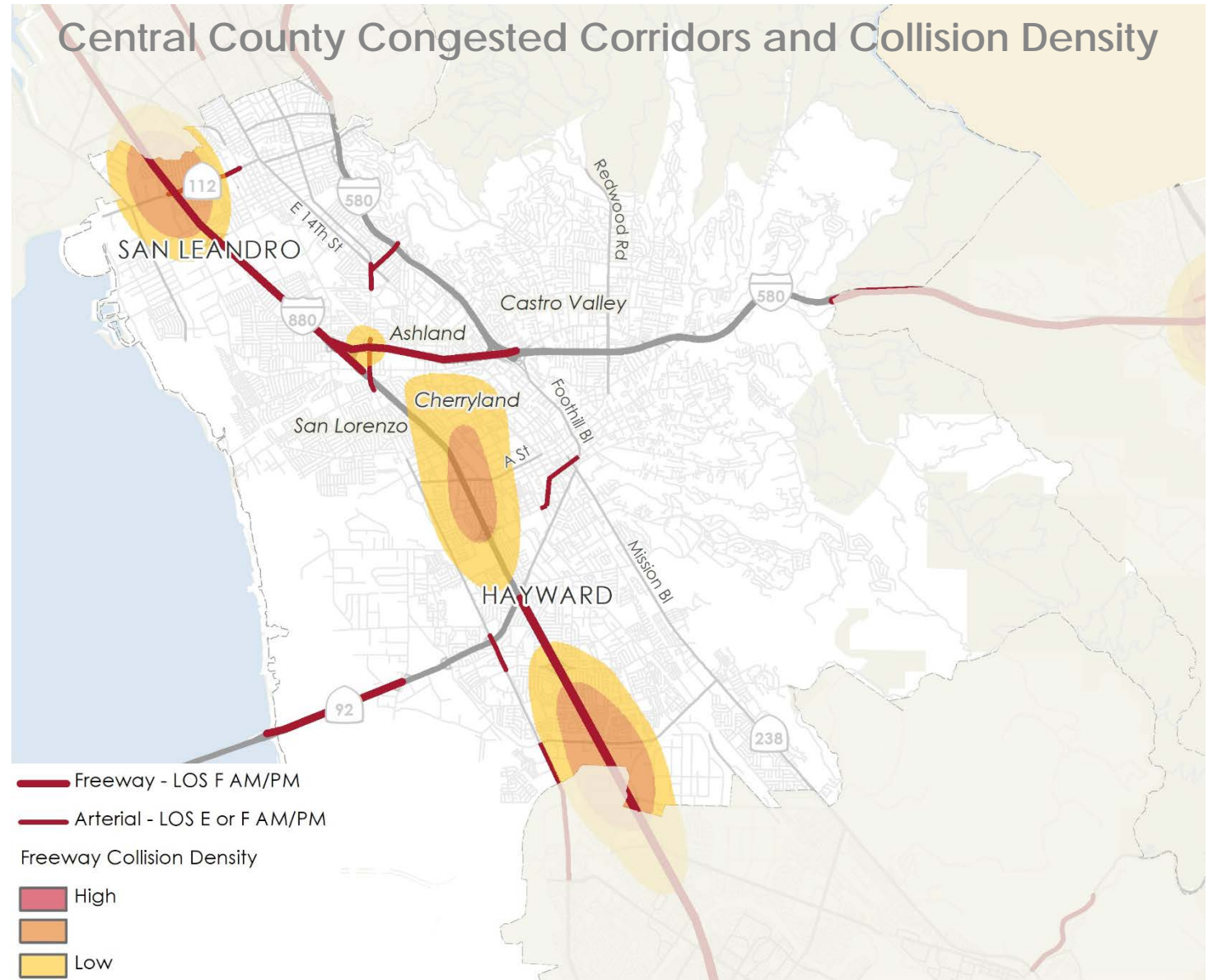


Data Source: Countywide Active Transportation Plan, 2019

Freeways

Key Challenges/Needs:

- Peak period congestion is very heavy on I-880 and I-238
- Multiple hot spots with high collision densities along I-880
- Cut-through traffic onto local roads
- High truck volumes cause wear-and-tear and pollution

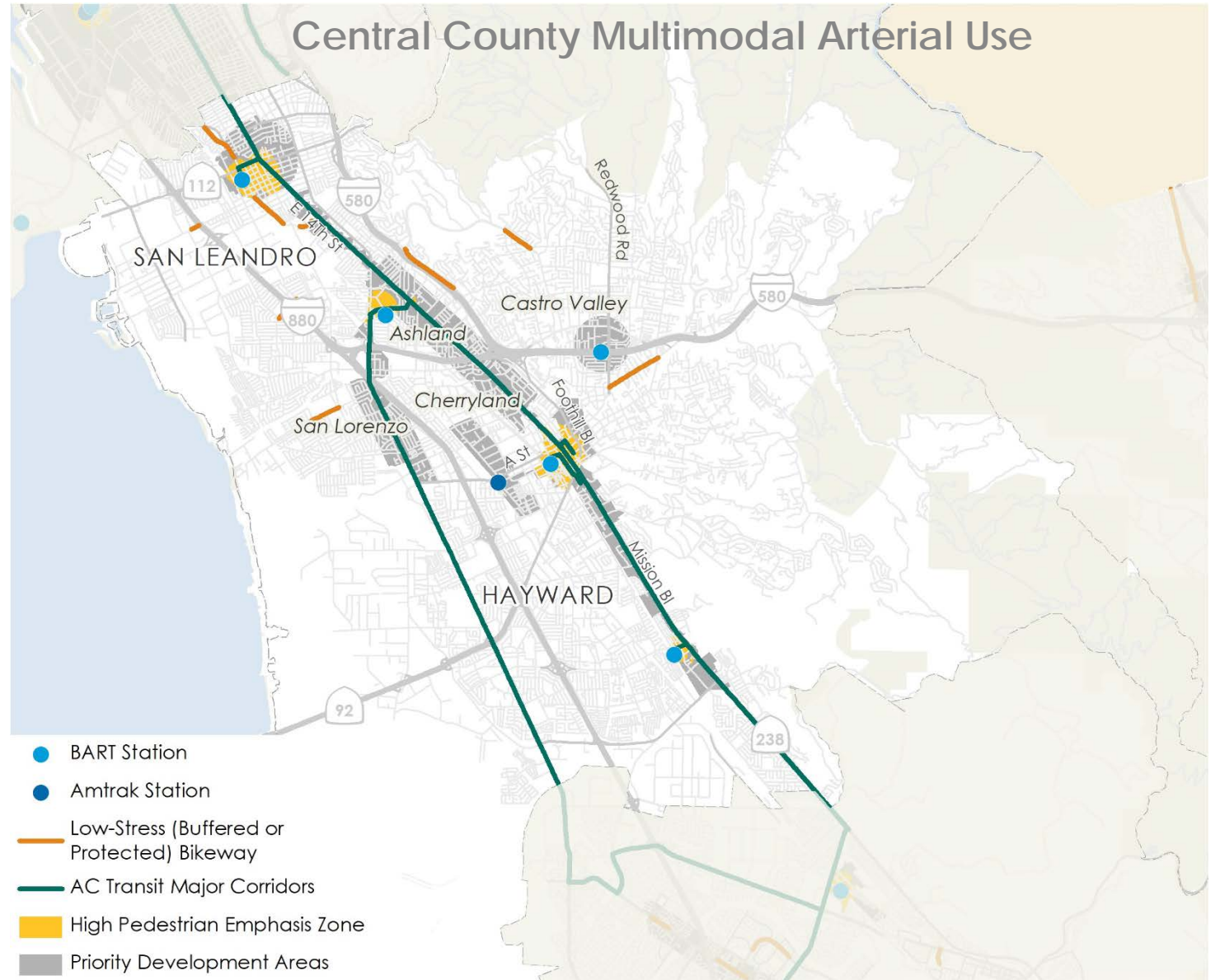


Data Source: LOS Monitoring Report, 2018

Arterials

Key Challenges/Needs:

- Reduced travel time reliability for automobiles and buses in downtown areas
- Local business frontages result in demand for multiple uses of curb space
- Placemaking challenges, including limited nighttime pedestrian-scale lighting
- Gaps in the walking/biking network that limit access to bus stops and BART

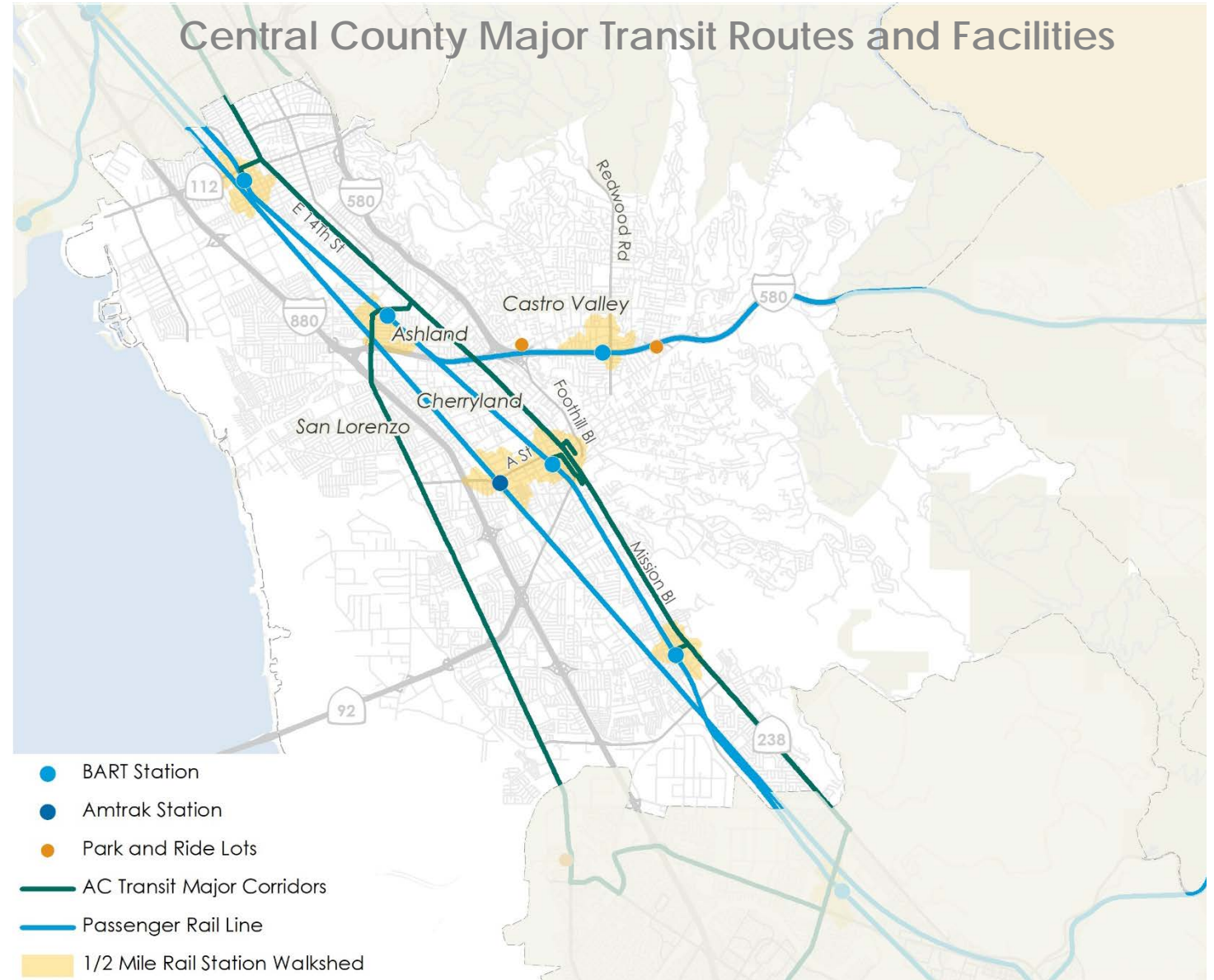


Data Sources: Countywide Transit Plan, 2016; Countywide Active Transportation Plan, 2019

Transit

Key Challenges/Needs:

- Few corridors have enough density to support high-frequency transit
- Limited coverage of high-frequency service, particularly for east-west travelers
- Peak hour congestion on major bus routes slows bus speeds and decreases reliability
- Limited first/last-mile access to transit stops and stations

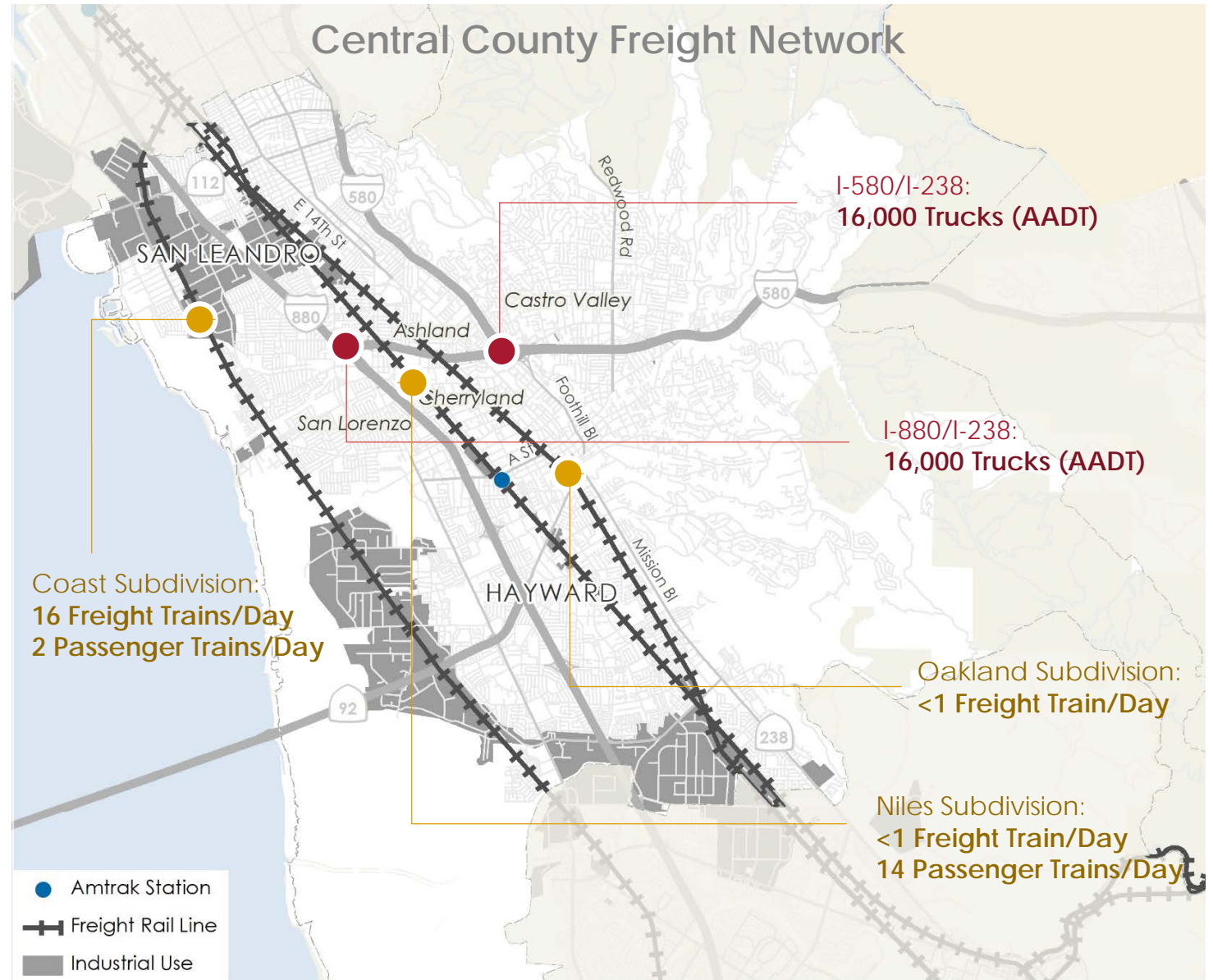


Data Source: Countywide Transit Plan, 2016

Goods Movement

Key Challenges/Needs:

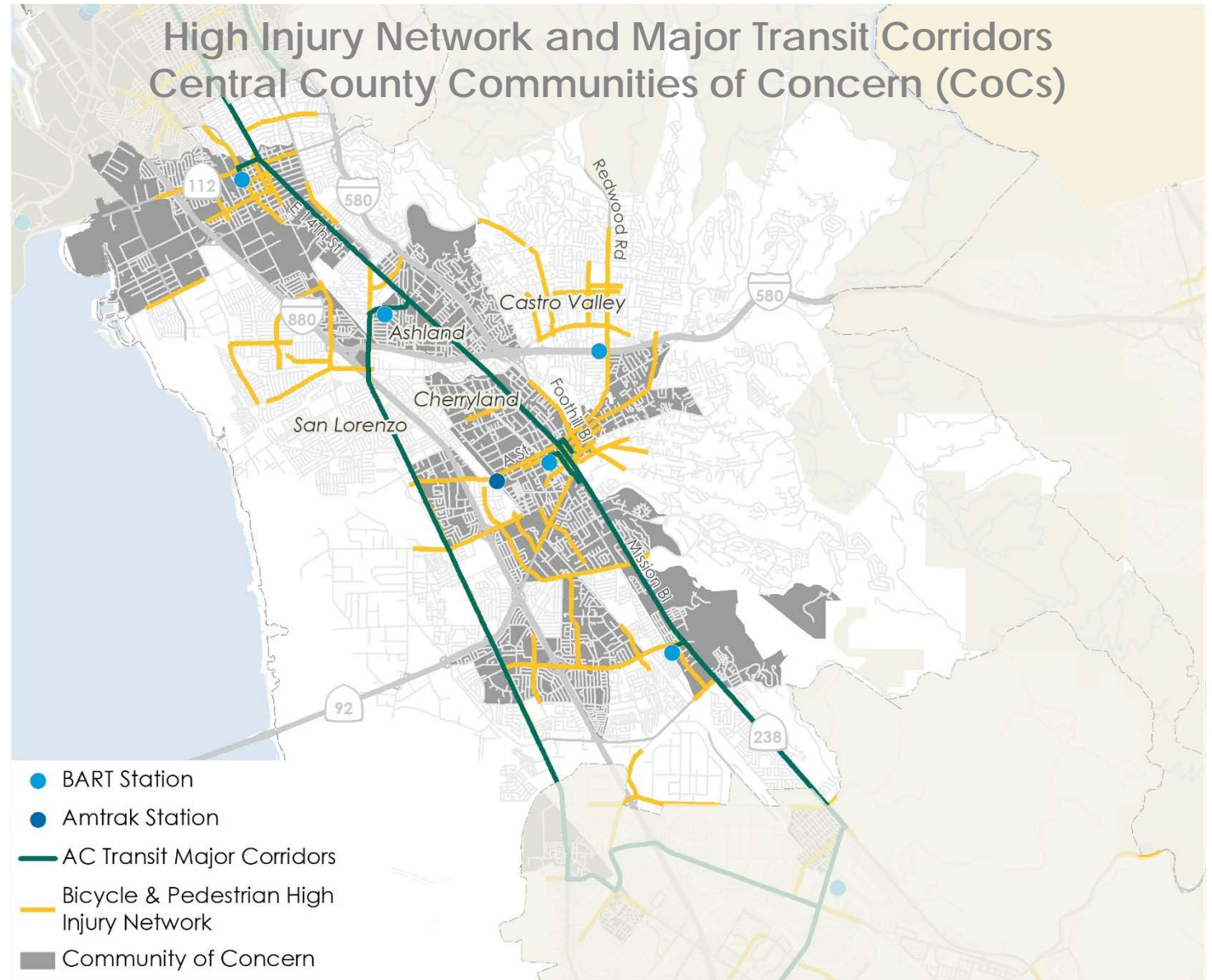
- Substantial delays and variable travel times on I-880 and I-238 during peak periods
- High truck volumes cause wear-and-tear and environmental concerns
- Rail capacity constraints
- Congestion, emissions, and safety impacts on nearby communities, particularly at at-grade crossings



Data Sources: Countywide Goods Movement Plan, 2016; Caltrans AADT Databook, 2017; Alameda CTC Rail Strategy Study, 2017.

Communities of Concern

- Countywide Community Based Transportation Plan (CBTP)
- Outreach in Central County CoCs:
 - Intercept surveys, pop up events, and community meeting
- Survey findings:
 - Concern for traffic and pavement quality
 - Safety concerns walking and biking
 - Support for lower-cost fares and more frequent service throughout the day



Major Needs in Central County



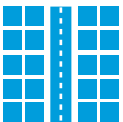
Improved Access to and Connectivity of High-Frequency Transit



Enhanced Placemaking and Complete Streets in Downtown and Commercial Areas



Safety Improvements Across All Modes and Users



Improved Travel Time Reliability on Major Corridors