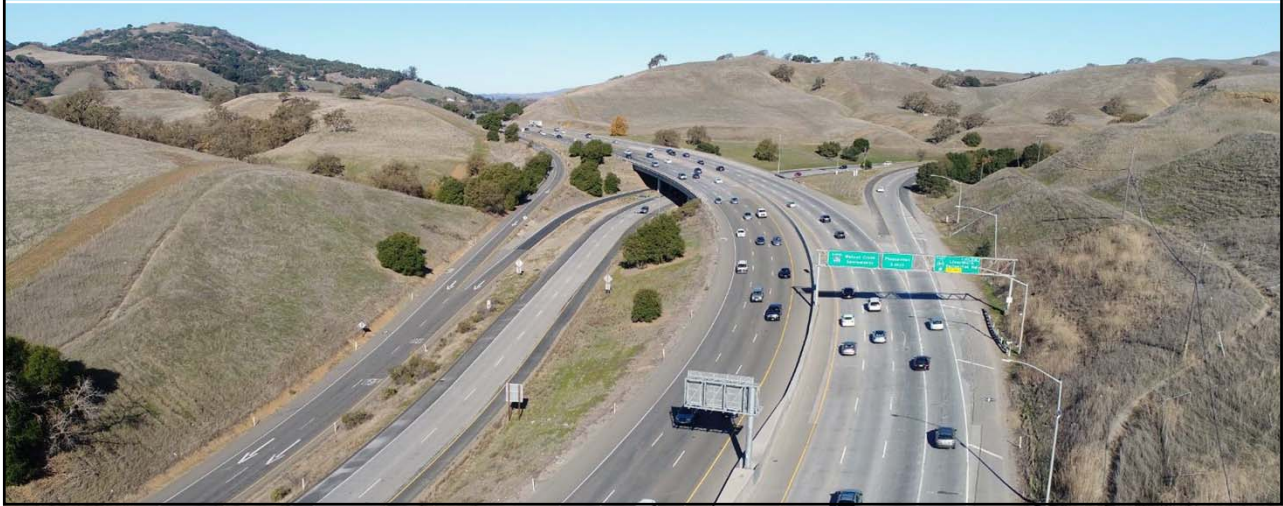


SR-84 Expressway and SR-84/I-680 Interchange Improvements Hearing on Resolutions of Necessity

A presentation to the Alameda CTC Commission

July 23, 2020



SR-84 Expressway and SR-84/I-680 Interchange Improvements Project

Basis for Proposed Resolutions of Necessity

- The public interest and necessity require the proposed project
- The proposed project is planned or located in the manner that will be most compatible with the greatest public good and the least private injury
- The property described in the resolution of necessity is necessary for the proposed project
- The offer required by Government Code Section 7267.2 has been made to all owners of record

Issues related to compensation for the real property interests necessary for the Project are not considered as part of the hearing on the proposed Resolutions of Necessity.



SR-84 Expressway and SR-84/I-680 Interchange Improvements Project

Project Need

- Upgrade facility to expressway standards due to gap in the State Route (SR-84) expressway facility between Interstate 680 (I-680) and Interstate 580 (I-580)
- Two-lane section on SR-84 limits flow of traffic
- Short weaving section on northbound I-680 approaching SR-84 and between westbound SR-84 on-ramp and southbound I-680 express lane limits flow of traffic
- Uncontrolled private driveway access
- Lack of bicycle facilities

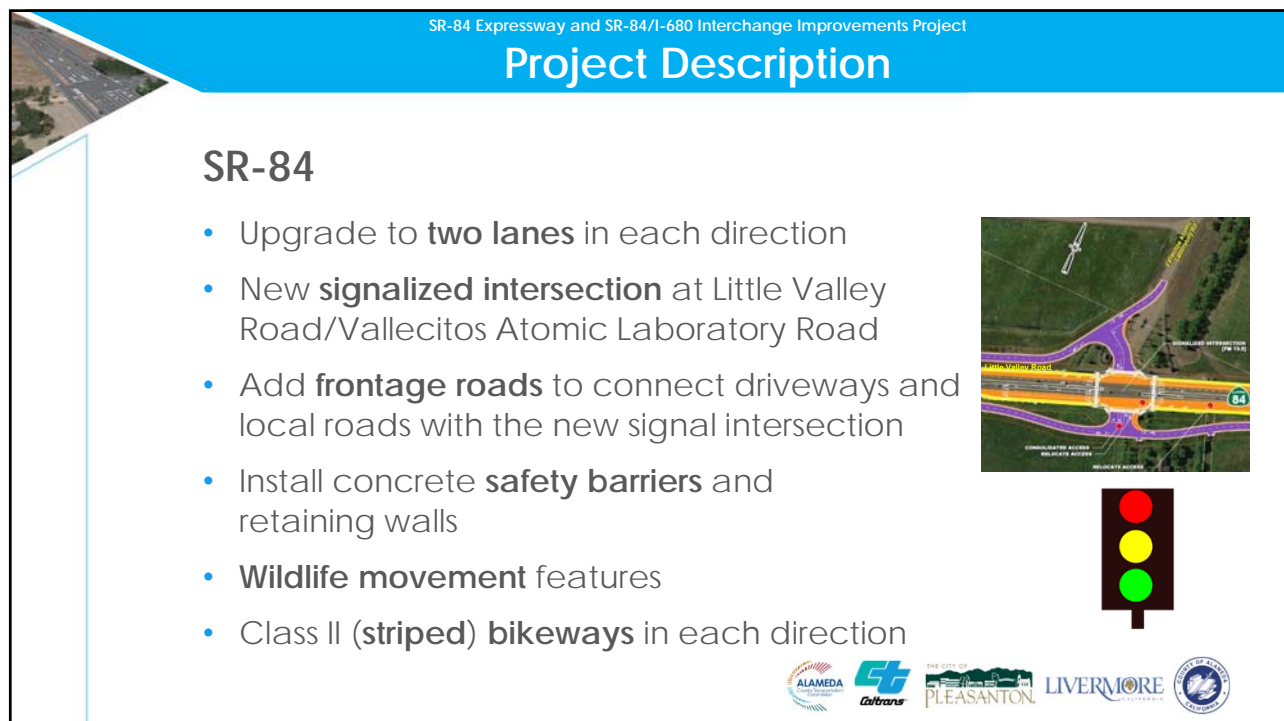
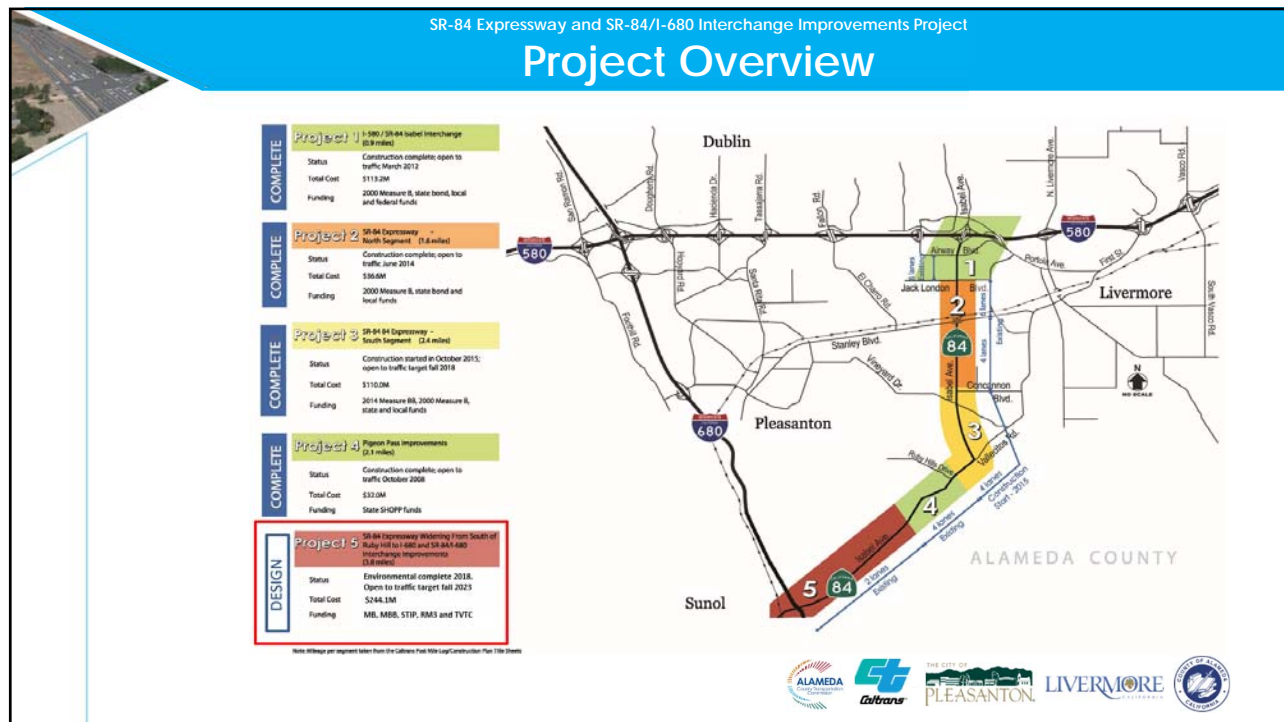


SR-84 Expressway and SR-84/I-680 Interchange Improvements Project

Project Purpose

- **Alleviate existing and future traffic congestion** on SR-84
- **Improve traffic circulation** between SR-84 and I-680 and at the SR-84/I-680 interchange
- **Improve safety** for motorists and cyclists
- **Conform** this segment of SR-84 to Caltrans expressway standards

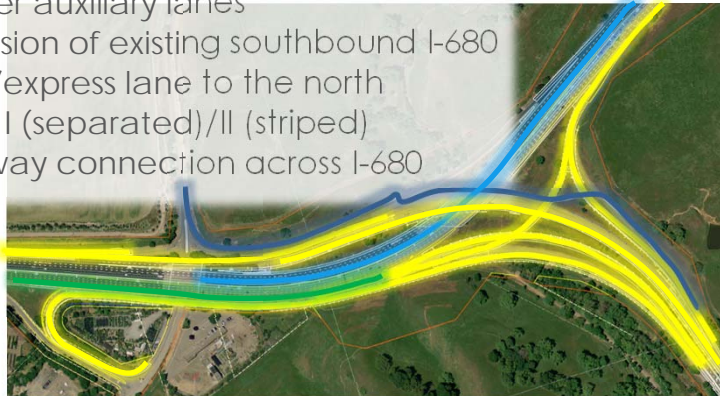




Project Description

I-680 and SR-84/I-680 Interchange

- Interchange ramp modifications
- Longer auxiliary lanes
- Extension of existing southbound I-680 HOV/express lane to the north
- Class I (separated)/II (striped) bikeway connection across I-680

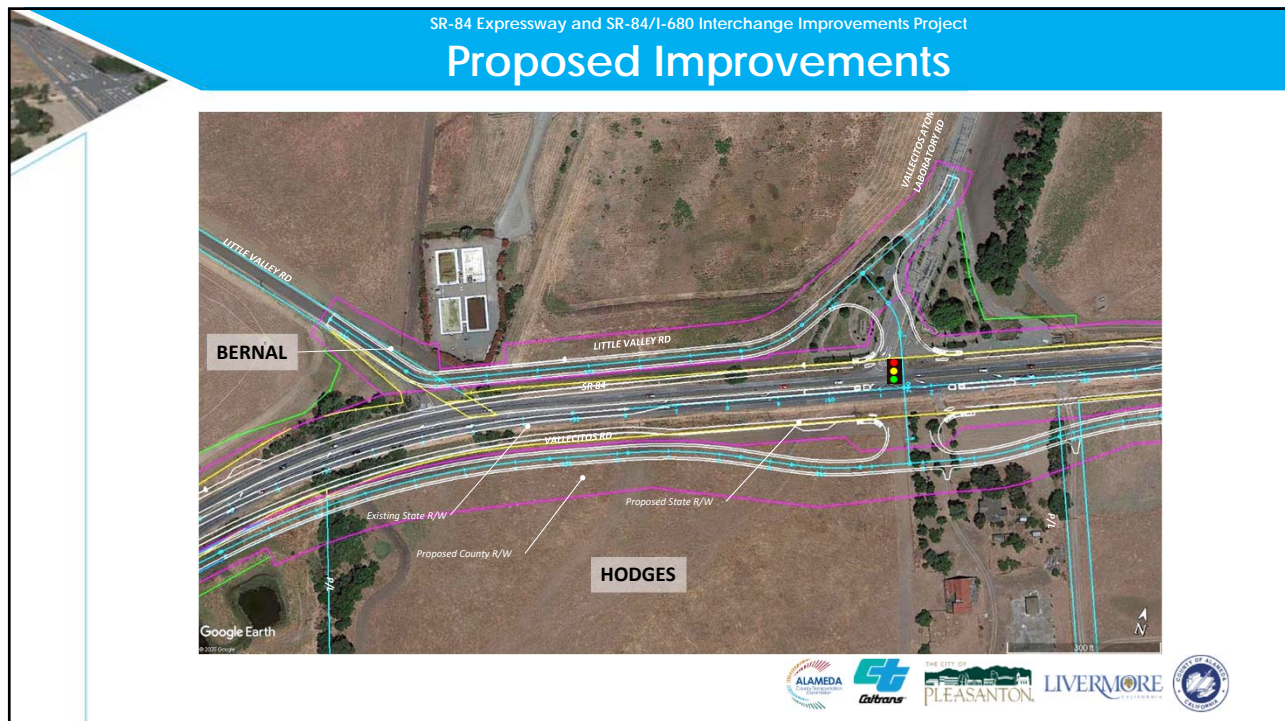
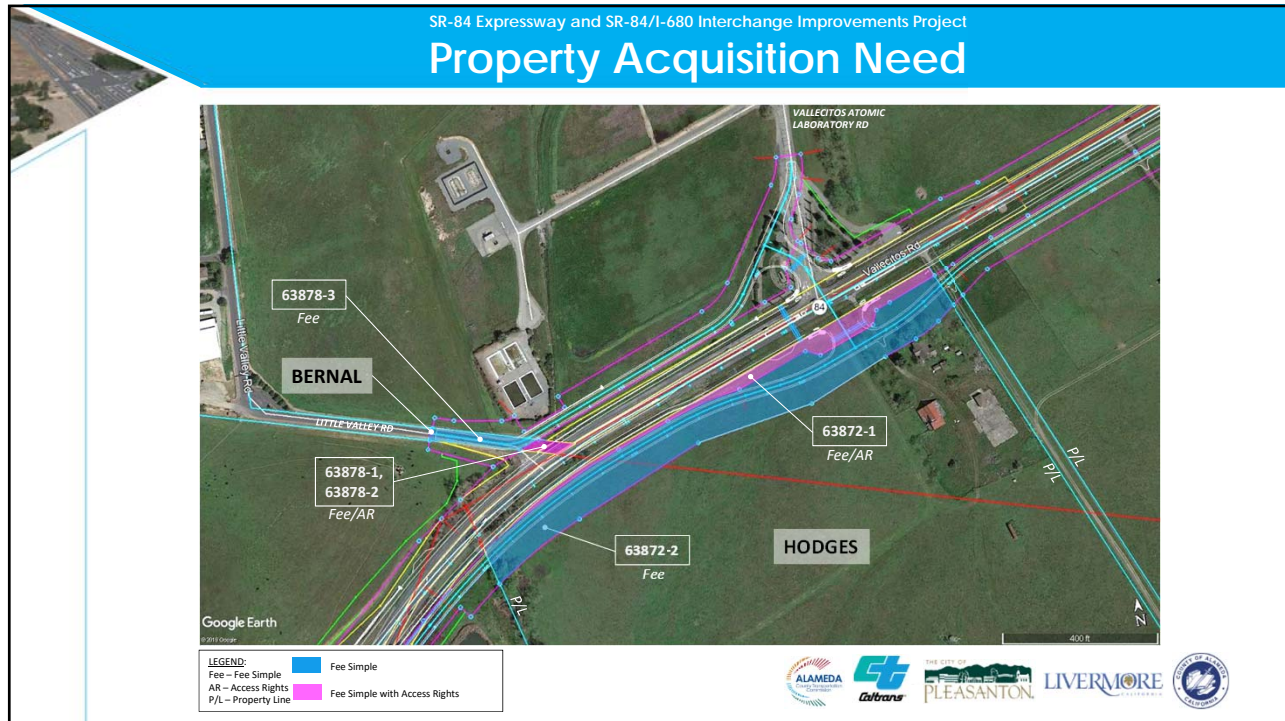


Project Right-of-Way Needs

Property Interests Needed From 11 Owners

- 37 fee simple, 36 access rights, 23 permanent easements and seven temporary construction easements
- Agreements reached with nine property owners
- Agreements not reached with two property owners
 - Following property interests needed from two remaining property owners
 - Five Fee Simple Acquisitions
 - Three Relinquishment of Access Rights





SR-84 Expressway and SR-84/I-680 Interchange Improvements Project

Project Delivery Critical Path Activities

- **Right-of-Way Certification:** by August 2020 to receive \$11.1 million in State Transportation Improvement Program (STIP) and \$8.6 million in Local Partnership Program (LPP) allocation at the October 2020 California Transportation Commission meeting
- **Advertisement:** December 2020
- **Order of Possession:** February 2021
- **Bid Opening:** February 2021
- **Award:** April 2021
- **Construction Complete:** Late 2023



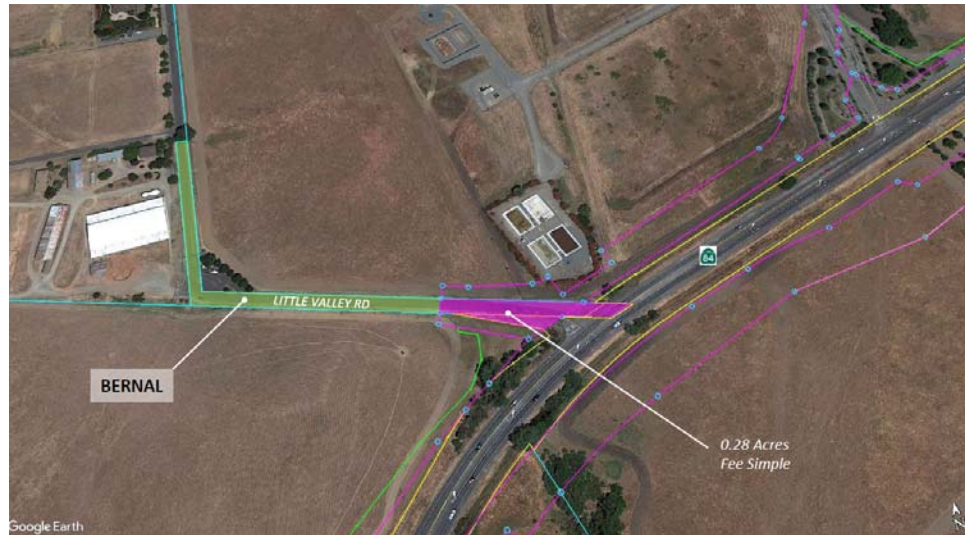
SR-84 Expressway and SR-84/I-680 Interchange Improvements Project

Property Acquisition Need



SR-84 Expressway and SR-84/I-680 Interchange Improvements Project

Property Acquisition Need



SR-84 Expressway and SR-84/I-680 Interchange Improvements

Thank You

For more information, visit

www.AlamedaCTC.org

Alameda County Transportation Commission • 1111 Broadway, Suite 800
Oakland, CA 94607 • 510.208.7400