



2020 Countywide Transportation Plan: Draft Recommendations

A Presentation to the Planning, Policy and Legislation Committee

Carolyn Clevenger, Deputy Executive Director of Planning and Policy

Cathleen Sullivan, Director of Planning

Kristen Villanueva, Senior Transportation Planner

July 13, 2020

Today's Objectives

- Receive an overview of the 2020 Countywide Transportation Plan (CTP) **core recommendations**
 - Draft final countywide 10-year priority project list
 - Draft final strategies & near-term priority actions
- Receive update on approach to addressing COVID-19 in the CTP

Feedback received from ACTAC and Commissioners in July will be incorporated as staff initiates the final phase of public outreach on the CTP in late summer and early fall.



What is the CTP?

What

A long-range planning and policy document that guides future transportation decisions for all surface transportation modes and users in Alameda County.

Vision

Alameda County residents, businesses and visitors will be served by a premier transportation system that supports a vibrant and livable Alameda County through a connected and integrated multimodal transportation system promoting sustainability, access, transit operations, public health and economic opportunities.



Primary Outcomes of the CTP

 Needs Assessment

 Community-Based Transportation Plan

 10-Year Priority Projects and Programs

 Strategies and Near-Term Actions

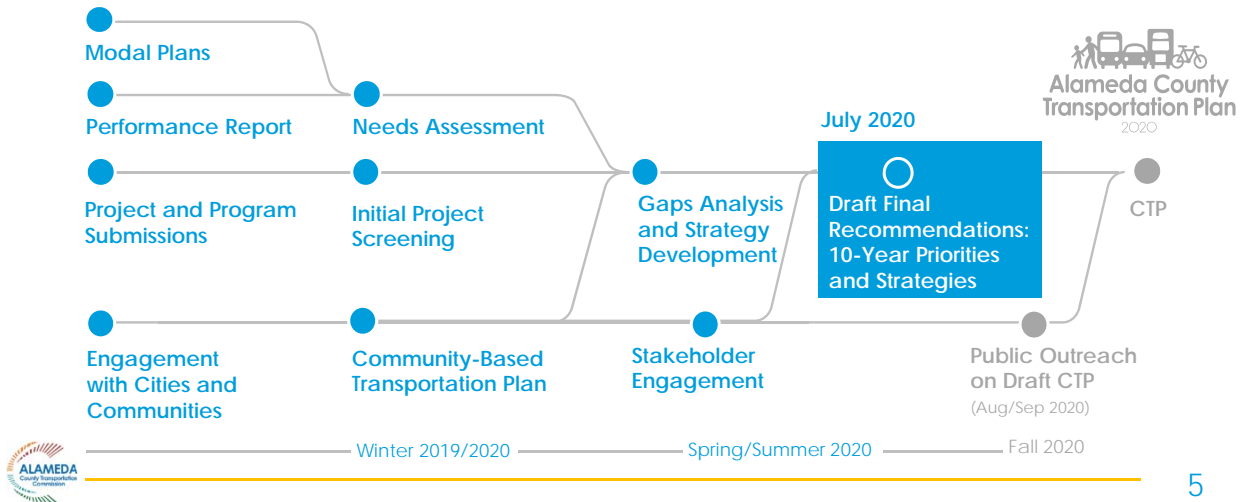
 Long-Term Projects and Programs

Core Recommendations



Where We Are in the Process

Plan Development and Public Outreach



Background of the 10-Year Priorities & Strategies



Addresses key needs through application of CTP Vision and Goals



Result of significant stakeholder input on local priorities and strategy refinement



Incorporates public input from the Community Based Transportation Plan (CBTP)

2020 CTP Goals & Statements

Goals Adopted by Commissioners in September 2019



Accessible, Affordable and Equitable

Improve and expand connected multimodal choices that are available for people of all abilities, affordable to all income levels and equitable.



Safe, Healthy and Sustainable

Create safe multimodal facilities to walk, bike and access public transportation to promote healthy outcomes and support strategies that reduce reliance on single-occupant vehicles and minimize impacts of pollutants and greenhouse gas emissions.



High Quality and Modern Infrastructure

Deliver a transportation system that is of a high quality, well-maintained, resilient, and maximizes the benefits of new technologies for the public.



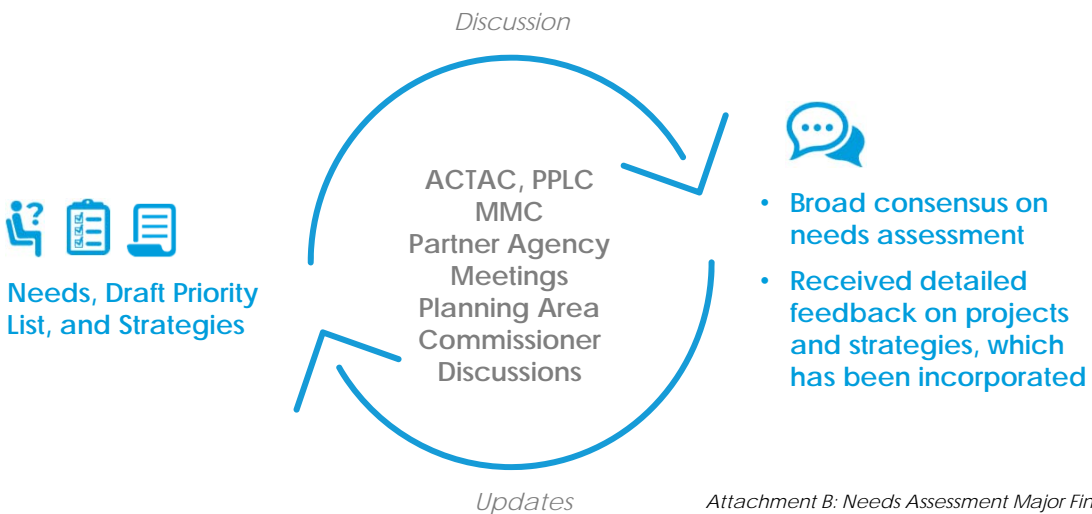
Economic Vitality

Support the growth of Alameda County's economy and vibrant local communities through a transportation system that is safe, reliable, efficient, cost-effective, high-capacity and integrated with sustainable transit-oriented development facilitating multimodal local, regional and interregional travel.



Attachment A: Vision and Goal Statements

Integrating Partner Agency Feedback



*Attachment B: Needs Assessment Major Findings
Attachment C: Engagement Summary*

Community-Based Transportation Plan

CBTP Objective:
Identify Mobility Needs for Alameda County Low-Income and Minority Communities

Integration with CTP

- **Screening Criteria:** CTP project screening includes Communities of Concern as a key criteria to identify projects and programs in 10-year priority list
- **CTP Strategies:** Needs identified inform projects and overarching strategies
- **Project Development:** Alameda CTC will continue to support cities to develop projects that respond to needs in Communities of Concern



Core Recommendation: 10-Year Priority Projects and Programs



10-Year Priority List

- Prioritizes within modes and among corridors
- Responds to CTP goals and county needs
- Includes projects already prioritized through previous expenditure plans
- Incorporates feedback from Commissioners and partner agency staff
- Reinforces long-standing agency commitments to key programs

90 projects
5 on-going programs
See Attachment D



How We Plan to Use the 10-Year List



Identify nearer-term projects and programs that best advance CTP goals and objectives



Prioritize within the Alameda CTC Capital Program



Establish near-term priority set of projects and programs to inform future discretionary funding decisions



Advocate for funding from regional, state, and federal competitive grants and stimulus measures



What the 10-Year List Accomplishes



Increases bus efficiency and walking and biking safety through **complete, multimodal corridors**



Supports **transit facilities** for maintenance and operations



Creates safe facilities through **greenways and trails**



Enhances multimodal safety of **interchanges** and **creates more HOV capacity**



Significantly improves **rail safety and connectivity**



Supports **goods movement** with **infrastructure and emission reduction** projects



Expands **rail and ferry capacity** and **increases multimodal access** to stations and terminals



Adapts our infrastructure to **sea level rise**

90 projects
5 on-going programs
See Attachment D



The 10-Year Priority Project List



Projects in or providing access to Priority Locations

69

in or provide access to Communities of Concern

77%

in or provide access to Communities of Concern

81

in or provide access to Priority Development Areas

90%

in or provide access to Priority Development Areas

Note: values here do not include 5 on-going programs



Programs & Ongoing Funding Commitments

Long-Standing Commitments Reinforced in CTP



Safe Routes to Schools



Affordable Student Transit Pass Program



Paratransit and Senior Mobility



Transit Operations



State of Good Repair (Local Streets & Roads)



Core Recommendation: Strategies and Near-Term Actions









Strategies Background

- Reviewed by Commissioners and ACTAC members multiple times since January 2020
- Reflect vision and goals, guiding principles, national best practices
- Respond to needs assessment and gaps analysis
- Intended to inform funding, advocacy, policy, technical assistance and project implementation



Strategy Categories

 Safe Systems Approach	 <p>Advance Equity is a cross-cutting strategy.</p> <p><i>Strategies and Actions that address key findings from the CBTP are indicated by two asterisks. **</i></p>
 Complete Corridors Approach	
 Partner to Advance Regional and Megaregional Issues	
 Transit Accessibility & TDM	
 Automated and Electric Future and New Mobility	



Moving from Strategies to Actions

Strategy Categories



Near-Term Actions

- Advance Equity
- Safe Systems Approach
- Complete Corridors Approach
- Partner to Address Regional and Megaregional Issues
- Transit Accessibility & Transportation Demand Management
- Automated and Electric Future and New Mobility

- Identify specific key roles for Alameda CTC
- Will be incorporated into the agency workplan
- Can be implemented within next 5 years
- Will continue to evolve as opportunities arise



Near-Term Actions, examples

Strategy Category

Near-Term Actions

Safe Systems Approach

- **Support projects that address high-injury network & COCs
- **Support SR2S site assessments, including mini-grants
- **Reform speed limit setting process

Complete Corridors Approach

- **Support/lead multimodal corridor projects
- Engage navigation app companies to reduce cut-through traffic
- **Develop model truck and private coach bus parking policies and programs



*Equity actions noted with ***

Near-Term Actions, examples

Strategy Category



Partner to Address
Regional and
Megaregional Issues

Near-Term Actions

- Partner to advance megaprojects, incl. interregional rail service
- Partner to advance express lanes paired with bus prioritization
- **Partner to improve transit fare integration and seamless transit connections



Transit Accessibility
and TDM

- **Continue to expand and enhance the Student Transit Pass Program
- **Track Clipper START program for low-income riders and explore potential for expansion



Equity actions noted with **

21

Near-Term Actions, examples

Strategy Category



Automated and
Electric Future and
New Mobility

Near-Term Actions

- Provide local assistance and support info exchange for technology trends
- Support policies and legislation that encourage shared AVs
- Implement the New Mobility Strategy



Implementing and
Monitoring Progress
on the CTP

- **Track and periodically report to Commission on progress towards CTP goals and meeting CBTP needs



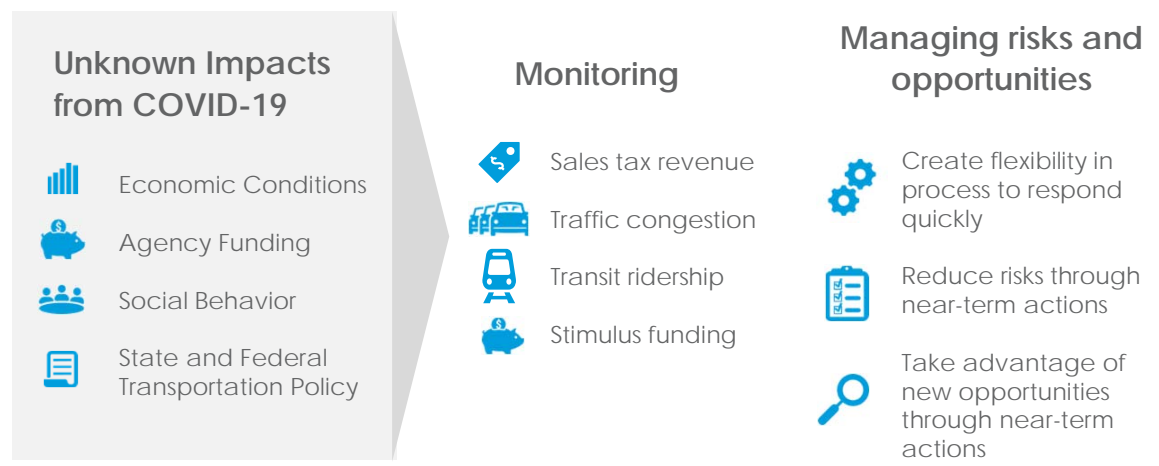
Equity actions noted with **

22

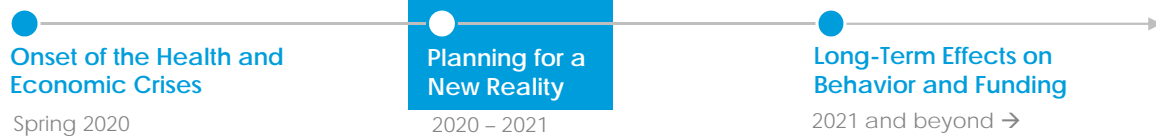
COVID-19 and the CTP



COVID-19 Approach



COVID-19 and the CTP



Interim Strategies

- Support economic stabilization & recovery
- Capitalize on need for safe walking and biking space
- Support vulnerable populations threatened by COVID-19
- Support transit recovery; help people feel safe on transit
- Encourage agile and flexible responses in the face of uncertainty



COVID-19 Immediate/Near-Term Actions

- Establish a \$1.125M COVID-19 Rapid Response Bicycle and Pedestrian Mini-Grant Program
- Modify programming rules to support recipient constraints, e.g. timely use of funds policy
- Change Paratransit fund eligibility to include meal delivery
- Make modifications to our school programs, STPP and SR2S
- Track discussions at and outcomes of MTC's Blue Ribbon Transit Recovery Task Force



COVID-19 Immediate/Near-Term Actions

(Cont'd)

- Support public education on public transit cleanliness/ sanitation protocols to boost rider confidence
- Partner with transit agencies and local jurisdictions to identify quick-build transit priority projects
- Continue to advance major projects to stimulate the economy and create jobs.
- Track stimulus bills and collect "shovel-ready" projects



27

Next Steps

Prepare
Draft Plan



Summer/
Fall 2020

Online Survey
on Draft Plan



Summer
2020

Online Focus
Groups



September
2020

Final Plan
Adoption



Fall/Winter
2020



28

Discussion

- Are there any final comments on the core recommendations?
 - Draft final countywide 10-year priority project list
 - Draft final strategies & near-term priority actions
- Are there any comments on the approach to addressing COVID-19 in the CTP and our interim actions?



Thank You

For more information, visit
www.AlamedaCTC.org