



**ALAMEDA**  
County Transportation  
Commission

ALAMEDA COUNTY TRANSPORTATION COMMISSION

## I-580 Express Lanes

### Modified Business Rules and Toll Policies



TOLL-PAYING  
VEHICLES



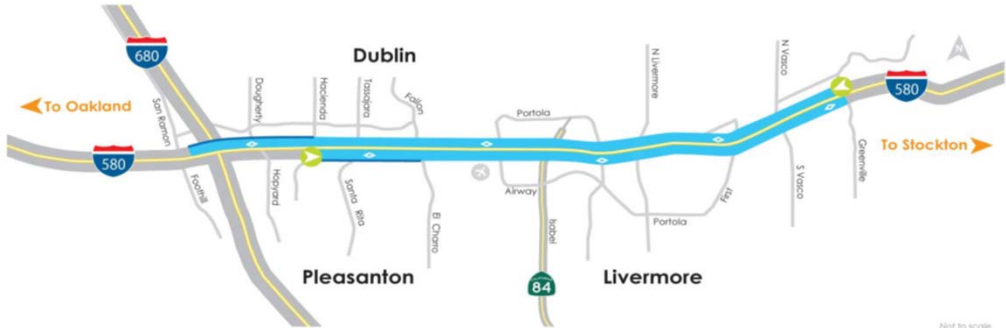
TRANSIT



EXPRESS LANE TOLL TO  
Isabel Ave **HOLD**  
San Ramon Rd **OPEN**  
HOV 2+ WITH **NO TOLL**

Multi-Modal Committee  
Liz Rutman, Director of Express Lanes Implementation and Operations  
June 8, 2020

## I-580 Express Lanes



Not to scale

**Two Eastbound Express Lanes**

**Lanes begin at Hacienda**

No entry/exit from eastbound express lanes from Hacienda to Fallon / El Charro.


**Please note: For access to Santa Rita Road, do not enter express lanes.**

**One Westbound Express Lane**

**Lane begins at Greenville**

No entry/exit from westbound express lane from Hacienda to end.

**Please note: For access to I-680 or Dougherty, exit express lane before Hacienda.**



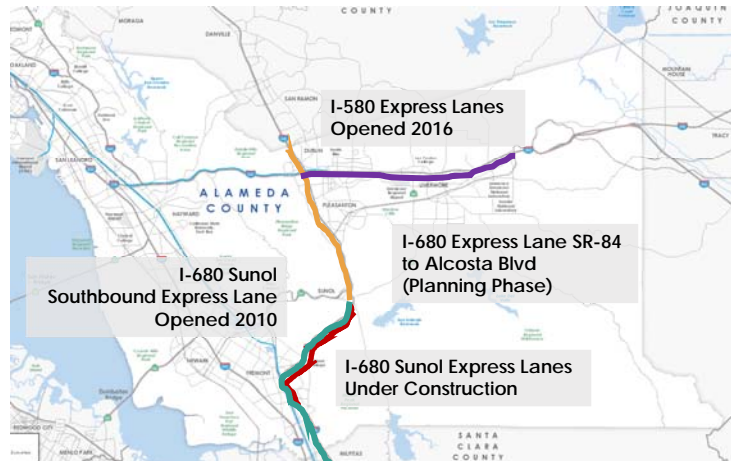
ALAMEDA  
County Transportation  
Commission

Multi-Modal Committee

2

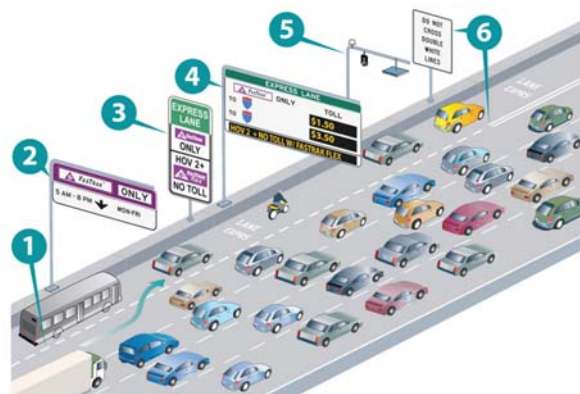
## Why Express Lanes?

- Provide travel time savings and travel reliability
- Expand the network for HOVs and buses
- Optimize the corridor capacity



## I-580 Freeway Operational Policies

- Access Control (1 & 6)
  - Near-Continuous
- Hours of Operation (2)
  - 5 am – 8 pm, Monday – Friday
- Occupancy Requirements (3)
  - HOV2+

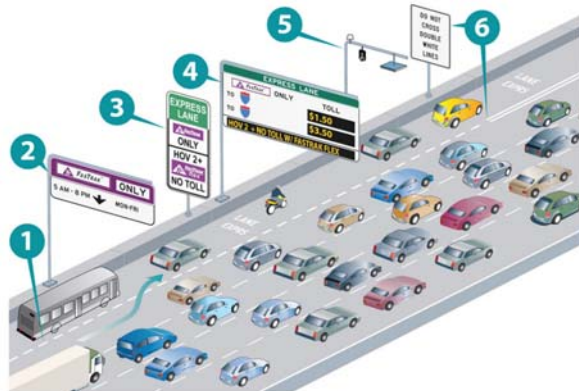


Caltrans retains authority to set freeway operational policies.



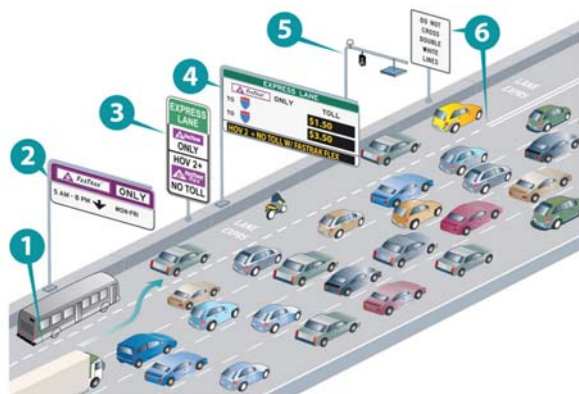
# I-580 Toll Policies

- Pricing
- User Rules
- Enforcement
- Fare Assignment
- Discounts



# Pricing

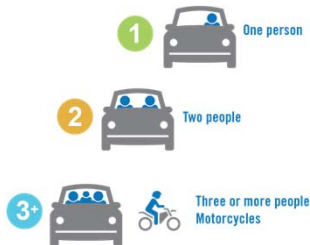
- Pricing Strategy (4)
  - Dynamic pricing
  - Minimum \$0.50
  - No maximum
- Toll-Free Users
  - Eligible carpools, vanpools, buses, motorcycles & CAVs



GOAL: Use pricing to meet federal/state performance requirements.



# FasTrak® Required for All Vehicles

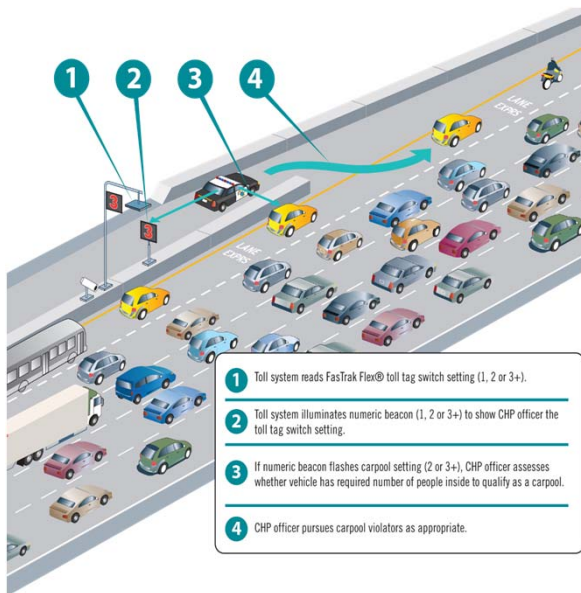


- FasTrak Flex®
  - “1” position for single occupant vehicles
  - “2” position for 2-person carpools
  - “3+” position for everything else
- Regular (legacy) tags OK but will incur full fare toll



# Enforcement

- Express Lanes have enhanced enforcement
  - Automated enforcement by toll system (license plate cameras), Toll Violation Notices
  - CHP manual enforcement (3, 4) with support from express lanes (1, 2)





## Clean Air Vehicles: Proposed Change

- Single Occupant Clean Air Vehicles → 50% Toll
- Eligible Clean Air Vehicles (currently only red, purple, and orange stickers) must use a “Clean Air Vehicle” FasTrak toll tag set to correct occupancy
- WHY?
  - CAV growth 426% growth in Alameda County between 2013 and 2017
  - Regional consistency



## Summary Proposals

- Affirm the existing tolling policies and business rules.
- Modify the toll zones from 8 westbound and 7 eastbound to 5 westbound and 4 eastbound to facilitate corridor management.
- Revised the Clean Air Vehicle toll discount policy from 100% discount to 50%, consistent with other Bay Area express lanes.

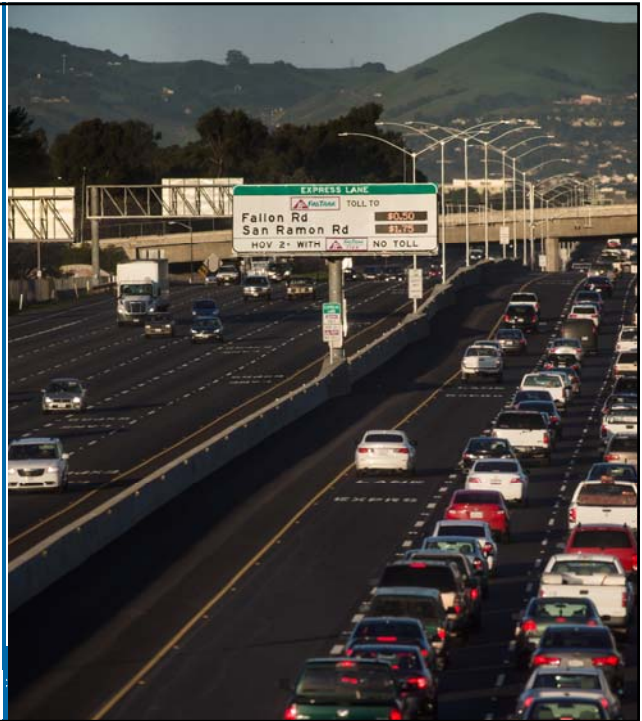




# Questions?

For more information, visit  
[www.AlamedaCTC.org](http://www.AlamedaCTC.org)

Alameda County Transportation Commission • 1111 Broadway, Suite 800  
Oakland, CA 94607 • 510.208.7400



*This page intentionally left blank*