



ALAMEDA COUNTY TRANSPORTATION COMMISSION

Upcoming Construction Opportunities Caltrans Advertise, Award and Administer



I-80 Gilman Interchange Improvements



SR-84 from South of Ruby Hill Drive to I-680 and SR-84/I-680 Interchange Improvements

Presented By
Trinity Nguyen, Director of Project Delivery
May 20, 2020

Welcome

Primes

Bay Cities Paving and Grading, Inc
DeSilva Gates Construction
Ghilotti Construction Company, Inc.
Granite Construction
Kiewit Infrastructure West
Malcolm International
MCM Construction, Inc.
O.C. Jones & Sons, Inc.
OHL USA, Inc.
Shimmick Construction Company, Inc.
Skanska
Teichert Construction
Walsh Construction

Subcontractors/Services

Aldridge Electric
Bridgeway Civil Constructors, Inc.
Condon-Johnson & Associates, Inc.
Frontline General Engineering
Geostructural Engineering Inc
Hillside Drilling, Inc.
KLM Materials, LLC
Malcolm Drilling Company, Inc.
Merriwether & Williams Insurance Services
Perimeter Security Group LLC
Rosendin Electric, Inc.
Trench Plate Rental Co. (TPR)
T.Y. Lin International
West Coast Drilling



Trinity Nguyen
Director of Project Delivery
Alameda CTC

Partners

Caltrans
City of Berkeley
City of Pleasanton

Consultant Team

HDR
Parsons
WMH Corporation
Sidhu Consulting LLC
VSCE

<https://www.alamedactc.org/programs-projects/highway-improvement/>

(Select Project. Select Public Meetings tab)



Agenda

I. Projects Overview

- I-80 Gilman Street Interchange Improvements
- SR-84 from South of Ruby Hill Drive to I-680 and SR-84/I-680 Interchange Improvements (“SR 84 Gap Closure”)

II. Advertise and Award

III. Questions and Answers



I-80 Gilman Interchange Improvements

Project Description

Reconfigure the I-80 Gilman interchange to improve navigation, mobility and traffic operations, and reduce congestion, shorten queues and minimize merging and turning conflicts. Additional improvements including a pedestrian/bicycle overcrossing over I-80, will close the gap in local and regional bicycle facilities.

Estimated Capital Cost: \$39 Million
Open to traffic Summer 2023



Susan Chang
Project Manager
Consultant



Measure BB



Scott Shepard
Deputy PM, Alameda CTC



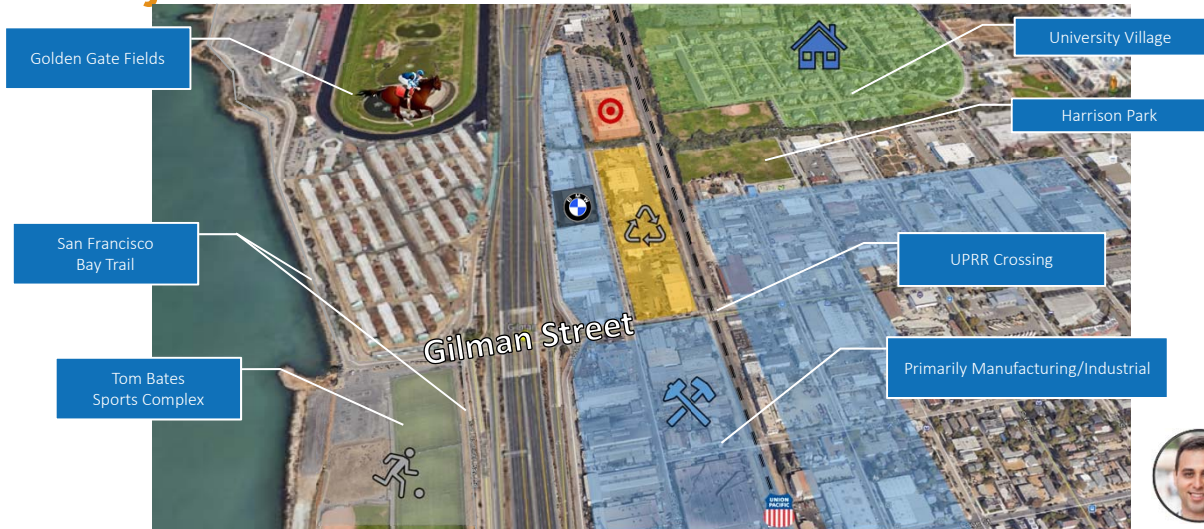
Chris Segur
Senior PM, PTG



Sasan Daneshvar
Principal Engineer, PTG



Project Location



Phase 1: POC

Key Components

- 230' steel arch bridge with CIP post tension concrete deck
- 8 approach spans (max. 117' long) reinforce concrete box deck
- 8 bents on CIDH Piles
- 2 concrete stairs
- 4-5 approach retaining walls (70'-180') with lightweight concrete back fill
- Minor road improvements
- Close coordination with Tom Bates Regional Sports Complex, Golden Gate Fields, East Bay Regional Park District and the City of Berkeley



Capital ~\$19 Million
430 Working Days

Ready to List	June 2020
Advertise	Aug/Sept 2020
Award	Dec 2020



Phase 2: Roundabouts and Other Work

Key Components

- 2 roundabouts
- Bay Trail gap closure at the foot of Gilman Street
- A new traffic signal at Gilman and 4th Streets
- Union Pacific Railroad (UPRR)/Gilman Street crossing improvements and signal interconnect
- 2 cantilever soldier pile retaining walls (125' -190')
- Architectural Curtain Wall
- Utilities



Capital ~\$20 Million
390 Working Days

Ready to List	October 2020
Advertise	Nov/Dec 2020
Award	March 2021



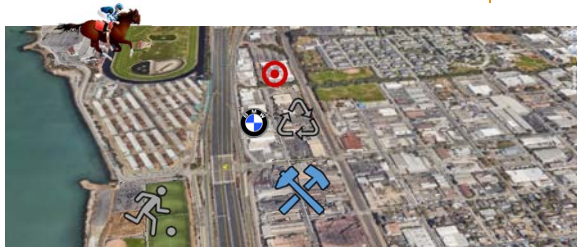
UPCOMING CONSTRUCTION OPPORTUNITIES [CALTRANS AAA]
 Note: All maps and figures for illustrative purposes only

7

Other Considerations

PERMITS AND COORDINATION

- BCDC
- UPRR
- Cities of Berkeley and Albany
- Utilities (PG&E, AT&T, EBMUD, etc.)



MAINTAIN ACCESS

- Golden Gate Fields
- Tom Bates Sports Complex
- Businesses on Gilman, Eastshore Hwy, 2nd St
 - ✓ Avis
 - ✓ Target
 - ✓ BMW
 - ✓ Terminal Manufacturing
 - ✓ Berkeley Recycling Center
 - ✓ Others



UPCOMING CONSTRUCTION OPPORTUNITIES [CALTRANS AAA]
 Note: All maps and figures for illustrative purposes only

8

Coordination

Project	2020				2021				2022				2023			
	Q1	Q2	Q3	Q4	Q1	Q2	Q3	Q4	Q1	Q2	Q3	Q4	Q1	Q2	Q3	Q4
Phase 1 (POC)																
Phase 2 (Roundabouts)																
Barrier Project**																

*All information shown is tentative and subject to change
 **Caltrans Median Barrier Lighting Project

Advertise/Award

Construction

Median Barrier Project



UPCOMING CONSTRUCTION OPPORTUNITIES [CALTRANS AAA]
 Note: All maps and figures for illustrative purposes only

SR-84 Widening From South of Ruby Hill Drive to I-680 and SR-84/I-680 Interchange Improvements

Project Description

Conformation of SR-84 to expressway standards between south of Ruby Hill Drive and the Interstate 680 (I-680) interchange in southern Alameda County:

- Widening SR-84 to accommodate one additional lane in each direction
- Interchange ramp modifications
- Extension of existing southbound I-680 high-occupancy vehicle (HOV)/express lane to the north by 2 miles

Estimated Capital Cost: \$170 M
650 Working Days



Gary Sidhu
Project Manager

Advertise
Award
Begin Construction
Open to traffic

Nov 2020
Feb 2021
April 2021
Late 2023



Tim Lee
Title



UPCOMING CONSTRUCTION OPPORTUNITIES [CALTRANS AAA]
 Note: All maps and figures for illustrative purposes only

Project Location



SB I-680 at Calaveras

PM 15.3



SR-84 looking westbound near Ruby Hill



SR-84 looking eastbound near Ruby Hill

PM 22.9



I-680/SR-84 Interchange

PM 10.3

PM 17.9

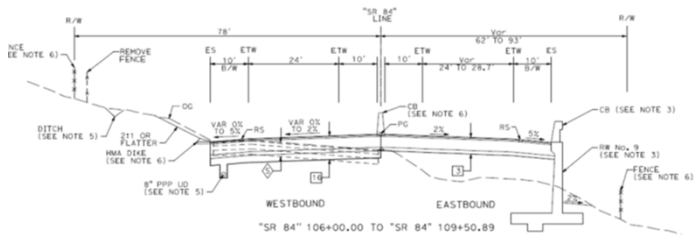


UPCOMING CONSTRUCTION OPPORTUNITIES [CALTRANS AAA]
Note: All maps and figures for illustrative purposes only



SR 84 Widening

- 2 lanes in each direction
- New signalized intersection at Little Valley Road/Vallecitos Atomic Laboratory Road
- Frontage roads to connect driveways and local roads with the new signal intersection
- Concrete safety barriers and retaining walls
- Wildlife movement features
- Class II (striped) bikeways in each direction



Typical section with retaining wall.



Intersection of Little Valley Road/Vallecitos Atomic Laboratory Road

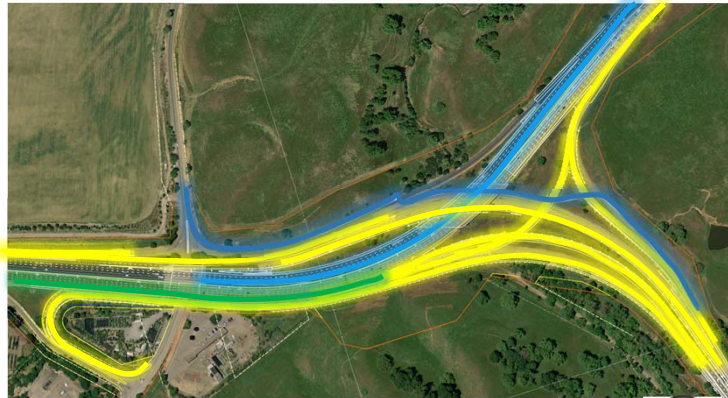


UPCOMING CONSTRUCTION OPPORTUNITIES [CALTRANS AAA]
Note: All maps and figures for illustrative purposes only



SR 84/I-680 Interchange

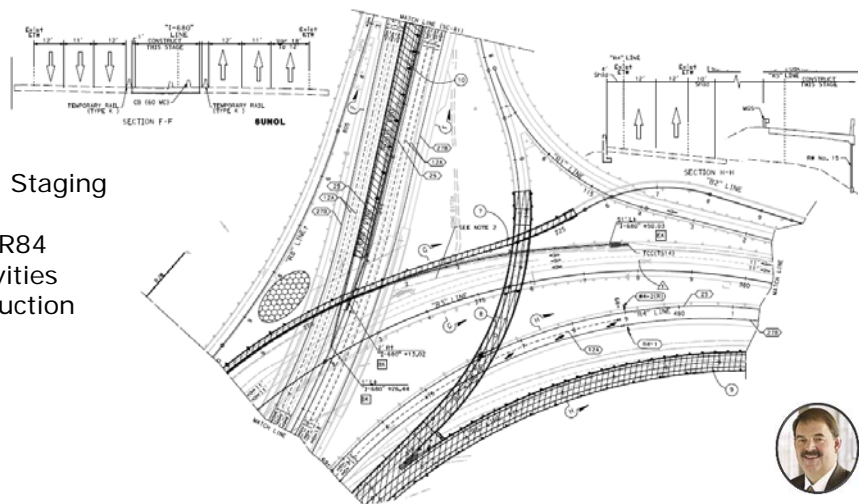
- Interchange ramp modifications
- Longer auxiliary lanes
- Extension of existing southbound I-680 HOV/express lane to the north
- Class I (separated)/II (striped) bikeway connection across I-680



UPCOMING CONSTRUCTION OPPORTUNITIES [CALTRANS AAA]
 Note: All maps and figures for illustrative purposes only

Construction Staging

- Complex Construction Staging to Maintain Traffic at Interchange and on SR84
- Pre-Construction Activities
- Four Stages of Construction



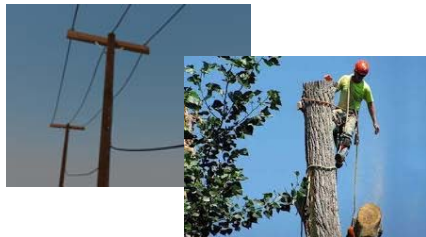
UPCOMING CONSTRUCTION OPPORTUNITIES [CALTRANS AAA]
 Note: All maps and figures for illustrative purposes only

Project Stages



Pre-Construction

Site Preparation by Others



Aug 2020 – Oct 2020
Work Done Under Caltrans Task Order
➤ Removal of ~900 trees

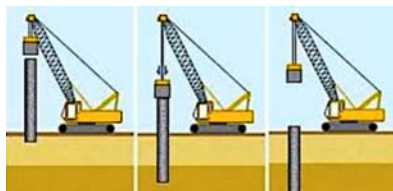
Oct 2020 – May 2021
Work Done by PG&E/AT&T Forces
➤ Relocate PG&E 12kV electric / AT&T telephone overhead lines (100 poles)
➤ Relocate approx. 1,000' of 24" PG&E gas line
➤ Relocate approx. 1,000' of 4" PG&E gas line



Project Stages



Stage 1



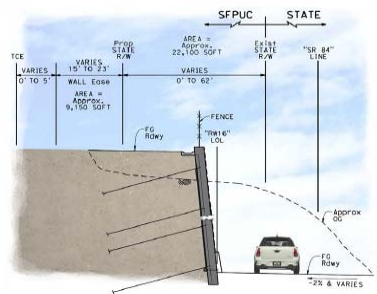
Work Done on SR 84
➤ Install Temporary Signal (Little Valley Road)
➤ Frontage Road Construction
➤ GE Waterline Relocation (jack and bore)
➤ Start Wall / Bridge Construction

Work Done on I-680
➤ SFPUC Waterline Relocations (jack and bore)



Project Stages

Stage 2
Begin SR 84 and I-680 Widening



Key Roadway Components



- Large volume of Roadway Excavation (235K CY with approximately 55K CY of excess material for off-site hauling)
- 190K Tons of HMA paving
- Several shallow depth drainage box culverts
- Planting and Irrigation at GE and SFPUC sites
- Highway lighting and traffic signals
- Electronic Toll system



UPCOMING CONSTRUCTION OPPORTUNITIES [CALTRANS AAA]
Note: All maps and figures for illustrative purposes only

Project Stages

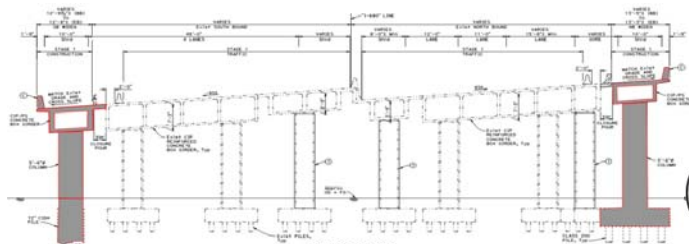
Stage 3
Complete I-680 Construction
Continue SR 84 Construction

Stage 4
Complete SR 84
Complete Wall/Bridge Construction
Toll System Installation

Key Structures Components



- Structures ~35% of work
 - 5 bridge widenings
 - 2 new bridges
 - Settlement Periods – up to 60 days
 - 20 Ret Walls (MSE, SN, SP and cantilever walls)
- 15 gantry sign structures



UPCOMING CONSTRUCTION OPPORTUNITIES [CALTRANS AAA]
Note: All maps and figures for illustrative purposes only

Traffic Management Strategy

“Safety + Minimize Public Inconvenience”

- ✓ Traffic use detours for ramp and full closures
- ✓ Restrictions on closures for holidays and special events

Daytime Work (7 AM to 5 PM- typical)

- Maintain existing lane configurations
- Shoulder closures
- Work behind K-rail

Nighttime Work (10 PM to 5 AM)

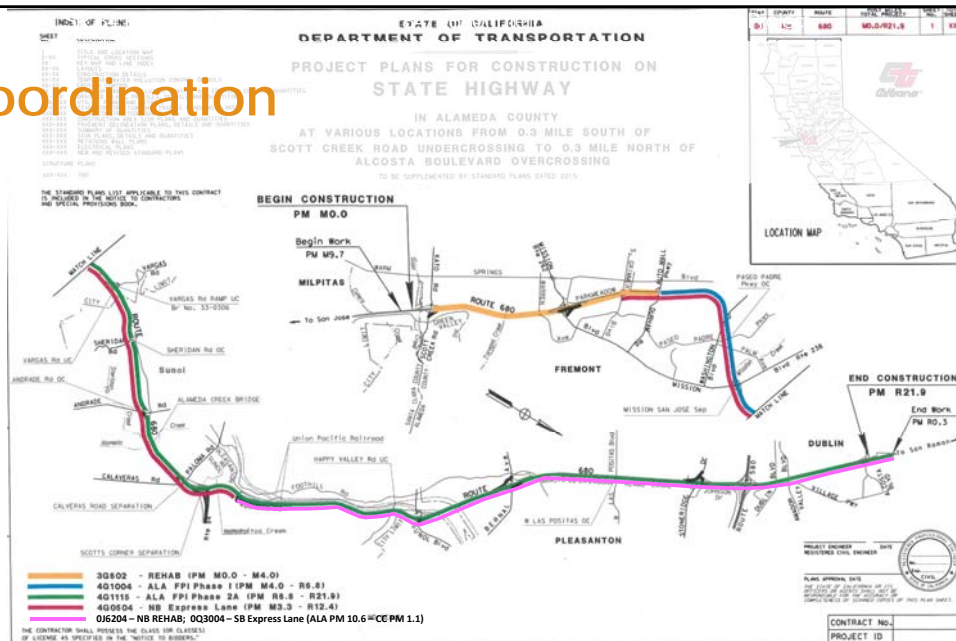
- Mainline lane closures
- Ramp closures
- Full Freeway Closure – overhead sign



UPCOMING CONSTRUCTION OPPORTUNITIES [CALTRANS AAA]

19

Coordination



UPCOMING CONSTRUCTION OPPORTUNITIES [CALTRANS AAA]
 Note: All maps and figures for illustrative purposes only

20

Other Considerations

- ❖ Regulatory Permits
 - ✓ USACE 404
 - ✓ RWQCB 401
 - ✓ CDFW 1602
 - ✓ CDFW Incidental Take Permit
- ❖ Private property owners
- ❖ ETS Coordination

PERMITS



ELECTRONIC TOLL SYSTEM (ETS)



UTILITIES



PROPERTY OWNERS



Note: All maps and figures for illustrative purposes only



UPCOMING CONSTRUCTION OPPORTUNITIES [CALTRANS AAA]

21

Advertise and Award



- Caltrans Advertise Award Administer
 - <http://ppmoe.dot.ca.gov/des/oe/contractor-info.html>
 - <http://ppmoe.dot.ca.gov/des/oe/electronic-bidding.html>
 - 60 days minimum advertising
- Contracts subject to DBE
 - <https://dot.ca.gov/programs/civil-rights/dbe-certification-information>
 - Statewide goal is 17.6%
 - Good Faith Effort (Document, Document, Document)
 - Attend the pre-bid meeting
 - Certified to perform the work (suppliers, etc.)
 - Offer assistance with bonding/insurance
 - Ask for help
- Buy America



UPCOMING CONSTRUCTION OPPORTUNITIES [CALTRANS AAA]

22

Milestone	Gilman Phase 1 (POC)	Gilman Phase 2 (Roundabouts)	“SR 84 Gap Closure”
Estimated Capital Cost	\$19 M	\$20 M	\$170 M
Working Days	430	390	650
Advertisement Date	September 2020	December 2020	November 2020
Bid Opening Date	November 2020	February 2021	January 2021
Award Date	December 2020	March 2021	February 2021
Begin Construction Date	January 2021	April 2021	March 2021
Complete Construction Date	Summer 2023	Summer 2023	Fall 2023

Questions/Answers

<https://www.alamedactc.org/programs-projects/highway-improvement/>

(Select Project. Select Public Meetings tab)



Alameda County Transportation Commission • 1111 Broadway, Suite 800
Oakland, CA 94607 • 510.208.7400