



Alameda County Technical Advisory Committee Meeting Agenda Thursday, May 7, 2020, 1:30 p.m.

Due to the statewide stay at home order and the Alameda County Shelter in Place Order, and pursuant to the Executive Order issued by Governor Gavin Newsom (Executive Order N-29-20), the Alameda County Technical Advisory Committee will not be convening at its Committee Room but will instead move to a remote meeting.

The technology for this meeting may not be able to accommodate verbal comments from the public over the telephone or webcast connection and therefore we request that you submit public comments electronically. Your comments will be read aloud to the Committee and those listening telephonically or electronically. Submit comments to: ayayers@alamedactc.org in advance or during the meeting.

Committee Chair: Tess Lengyel

Staff Liaison: [Gary Huisingh](#)

Clerk: [Vanessa Lee](#)

Location Information:

Virtual Meeting Information: <https://zoom.us/j/96447793311>
Webinar ID: 964 4779 3311

For Public Access Dial-in Information: (669) 900-6833
Webinar ID: 964 4779 3311

To request accommodation or assistance to participate in this meeting, please contact Vanessa Lee, the Clerk of the Commission, at least 48 hours prior to the meeting date at: vlee@alamedactc.org

1. Call to Order

2. Introductions/Roll Call

3. Public Comment

4. Consent Calendar

Page/Action

4.1. [Approve the March 5, 2020 ACTAC Meeting Minutes](#)

1 A

5. Planning / Programs / Monitoring

5.1.	Approve Draft 2020 Comprehensive Investment Plan Update	5	A
5.2.	Update on COVID-19 Stimulus Efforts and Draft Project Advocacy List	29	I
5.3.	2020 Countywide Transportation Plan: Community-Based Transportation Plan Update	37	I
5.4.	Alameda County Federal Inactive Project Update	51	I

6. Member Reports

7. Staff Reports

8. Adjournment

Next Meeting: Thursday, June 4, 2020

Notes:

- All items on the agenda are subject to action and/or change by the Commission.
- To comment on an item not on the agenda (3-minute limit), submit a speaker card to the clerk.
- Call 510.208.7450 (Voice) or 1.800.855.7100 (TTY) five days in advance to request a sign-language interpreter.
- If information is needed in another language, contact 510.208.7400. Hard copies available only by request.
- Call 510.208.7400 48 hours in advance to request accommodation or assistance at this meeting.
- Meeting agendas and staff reports are available on the [website calendar](#).
- Alameda CTC is located near 12th St. Oakland City Center BART station and AC Transit bus lines. [Directions and parking information](#) are available online.



Alameda CTC Schedule of Upcoming Meetings for May through July 2020

Commission Chair

Mayor Pauline Russo Cutter
City of San Leandro

Commission Vice Chair

Councilmember John Bauters
City of Emeryville

AC Transit

Board Vice President Elsa Ortiz

Alameda County

Supervisor Scott Haggerty, District 1
Supervisor Richard Valle, District 2
Supervisor Wilma Chan, District 3
Supervisor Nate Miley, District 4
Supervisor Keith Carson, District 5

BART

Vice President Rebecca Saltzman

City of Alameda

Mayor Marilyn Ezy Ashcraft

City of Albany

Mayor Nick Pilch

City of Berkeley

Mayor Jesse Arreguin

City of Dublin

Mayor David Haubert

City of Fremont

Mayor Lily Mei

City of Hayward

Mayor Barbara Halliday

City of Livermore

Mayor John Marchand

City of Newark

Councilmember Luis Freitas

City of Oakland

Councilmember At-Large
Rebecca Kaplan
Councilmember Sheng Thao

City of Piedmont

Mayor Robert McBain

City of Pleasanton

Mayor Jerry Thorne

City of Union City

Mayor Carol Dutra-Vemaci

Executive Director

Tess Lengyel

Commission and Committee Meetings

Time	Description	Date
2:00 p.m.	Alameda CTC Commission Meeting	May 28, 2020 June 25, 2020 July 23, 2020
9:00 a.m. 9:30 a.m.*	Multi-Modal Committee (MMC)	June 8, 2020 July 13, 2020*
10:00 a.m.	Programs and Projects Committee (PPC)	
11:30 a.m.	Planning, Policy and Legislation Committee (PPLC)	
9:00 a.m.	I-680 Sunol Smart Carpool Lane JPA (I-680 JPA)	July 13, 2020

*The July MMC will begin at 9:30 a.m.

Advisory Committee Meetings

1:30 p.m.	Alameda County Technical Advisory Committee (ACTAC)	June 4, 2020 July 9, 2020
5:30 p.m.	Independent Watchdog Committee (IWC)	July 13, 2020

All meetings are held at Alameda CTC offices located at 1111 Broadway, Suite 800, Oakland, CA 94607. Meeting materials, directions and parking information are all available on the [Alameda CTC website](http://www.AlamedaCTC.org). Meetings subject to change.

This page intentionally left blank



Alameda County Technical Advisory Committee Fiscal Year 2019-2020

Member Agencies

AC Transit
BART
City of Alameda
City of Albany
City of Berkeley
City of Dublin
City of Emeryville
City of Fremont
City of Hayward
City of Livermore
City of Newark
City of Oakland
City of Piedmont
City of Pleasanton
City of San Leandro
City of Union City
County of Alameda

Other Agencies

Chair, Alameda CTC
ABAG
ACE
BAAQMD
Caltrans
CHP
LAVTA
MTC
Port of Oakland
Union City Transit
WETA

This page intentionally left blank



1. Call to Order

Gary Huisingsh called the meeting to order.

2. Roll Call/Introductions

Introductions were conducted. All members were present with the exception of Kevin Connolly, Lt. Austin Danmeier, Amber Evans, Anthony Fournier, Johnny Jaramillo, Farid Javandel, Steven Lizzarago, Donna Lee, and Zhongping "John" Xu.

Subsequent to the roll call:

Amber Evans and Fred Kelley arrived during 5.1.

Christy Lefall left during 5.1.

3. Public Comment

There were no public comments.

4. Consent Calendar

4.1. Approval of January 9, 2020 ACTAC Meeting Minutes

Obaid Khan made a motion to approve the consent calendar. Cederic Novenario seconded the motion. The motion passed with the following votes:

Yes: Ayupan, Chiu, Ferrara, Fried, Horvath, Huisingsh, Imai, Izon, Khan, Larsen, Lefall, Ng, Novenario, Payne, Peterson, Stella, Victor, Yeamans

No: None

Abstain: None

Absent: Connolly, Danmeier, Evans, Fournier, Jaramillo, Javandel, Kelley, Lizzarago, Lee, Xu

5. Programs/Projects/Monitoring

5.1. Approve Plan Bay Area 2050 Revised List and Performance Strategies for Alameda County for Submittal to the Metropolitan Transportation Commission

Carolyn Clevenger recommended that the Commission approve the Plan Bay Area 2050 Revised List and Performance Strategies for Alameda County for Submittal to the Metropolitan Transportation Commission (MTC). The committee discussed this item and requested the following revisions:

- Offered support in developing responses to MTC's performance analysis, with specific focus on the importance of SR 262, Quarry Lakes Parkway, Dumbarton and ACE rail projects, and AC Transit projects

- Added “safety” to the technology program description
- Added “adaptation” to the climate program and resiliency description
- Requested consideration to increase the amount for the climate program and resiliency programmatic item when final budgets are assigned in June

Hans Larsen made a motion to approve this item. Justin Fried seconded the motion. The motion passed with the following votes:

Yes: Ayupan, Chiu, Evans, Ferrara, Fried, Horvath, Huisingh, Imai, Izon, Kelley, Khan, Larsen, Ng, Novenario, Payne, Peterson, Stella, Victor, Yeamans
 No: None
 Abstain: None
 Absent: Connolly, Danmeier, Fournier, Jaramillo, Javandel, Lizzarago, Lee, Xu

5.2. 2020 Countywide Transportation Plan: Needs Assessment Part 2

Kristen Villanueva provided an update to the Commission on the second of two parts of the Needs Assessment conducted of the Alameda County transportation system for the 2020 Countywide Transportation Plan (CTP). She noted that Part 2 of the Need Assessment focused on transit, arterials and goods movement. The strategies were compiled based on a review of recent county plans and relevant local planning initiatives, and are aligned with the four goals adopted by the Commission in September 2019 for the 2020 CTP. Staff shared Part 1 of the Needs Assessment on active transportation and freeways in January 2020. ACTAC members were supportive of the needs assessment findings and the strategies presented. Comments and questions focused on refining the definitions of strategies:

- Discussion regarding importance of Vision Zero policies and how to best support safety projects while being sensitive to local context and community concerns over some elements of Vision Zero
- Elevating truck parking as an important countywide need serving multiple areas
- Broadening transit first/last mile to address longer distances and incorporate new mobility options and technologies
- Highlighting safety when discussing technology

This item is for information only.

5.3. Alameda County Federal Inactive Projects Update

Jacki Taylor provided an update on the Federal Inactive List and she highlighted potential deobligation dates for inactive projects. She encouraged ACTAC members to stay current with their federal invoicing.

This item is for information only.

6. Members Report

Hans Larsen shared that the National Center for Safe Routes to School named the City of Fremont as the 2020 recipient of the Vision Zero for Youth USA Leadership Award.

Eve Ng stated that to slow the spread of COVID-19 AC Transit is sanitizes their buses nightly focusing on areas that folks touch.

Marilou Ayupan asked the public works members if any city has purchased mini street sweepers for bike lanes and does it fit in that space. The City of Fremont and the City of Oakland said yes and they fit the bike lanes.

Julieth Ortiz stated that the City of Oakland is hosting East Oakland Futures Fest on April 18, 2020.

Obaid Khan mentioned that the City of Dublin St. Patrick's Day festival is scheduled for March 14 & 15, 2020.

7. Staff Report

Saravana Suthanthira stated that ACTAC received an update on SB 743 in February and noted that the mandatory application of the vehicles miles travelled (VMT) metrics is starting July 1, 2020. She noted that staff forwarded to ACTAC members Caltrans guidance on land use and comments are due by March 31, 2020.

Chris Marks stated that Alameda CTC is kicking off its 2020 biennial Congestion Management Program (CMP) monitoring process. He noted the monitoring will take place from March through May 2020. Mr. Marks stated that staff requested assistance from cities in identifying major construction activities that may impact speeds on the CMP roadways in Alameda County.

[Please note that subsequent to ACTAC, the CMP monitoring work was delayed due to the COVID-19 shelter in place.]

8. Adjournment

The meeting adjourned at 3:30 p.m. The next meeting is scheduled for April 9, 2020 at the Alameda CTC offices.

This page intentionally left blank



Memorandum

5.1

1111 Broadway, Suite 800, Oakland, CA 94607

PH: (510) 208-7400

www.AlamedaCTC.org

DATE: May 4, 2020

TO: Alameda County Technical Advisory Committee

FROM: Vivek Bhat, Director of Programming and Project Controls
John Nguyen, Principal Transportation Planner

SUBJECT: Approve Draft 2020 Comprehensive Investment Plan Update

Recommendation

It is recommended the Commission approve the following actions:

1. Approve the 2020 Comprehensive Investment Plan (CIP) Update, which includes incorporating:
 - a. \$171.2M in previously approved programming actions occurring after the current 2020 CIP was approved (June 17, 2019)
 - b. \$11.1M in new programming recommendations and allocation adjustments
 - c. \$6.5M in deprogramming from projects with revised project funding needs, and unspent balances.
 - d. Updated CIP programming guidelines, policies and procedures for the upcoming 2022 CIP programming cycle.
2. Authorize Executive Director or designee to execute Project Funding Agreements related to CIP allocation recommendations.

Summary

Alameda CTC's Comprehensive Investment Plan (CIP) is a near-term strategic programming document through which fund sources administered by Alameda CTC (such as Measure B, Measure BB, Vehicle Registration Fee, Transportation Fund for Clean Air, federal One Bay Area Grant Program) are programmed, allocated, and documented. The CIP is updated annually to document programming and allocations that occurred since its last approval, to capture additional programming and technical adjustments, and to update CIP programming guidelines, policies and procedures.

On June 17, 2019, the Commission approved the 2020 CIP which included approximately \$222M programmed from fiscal years (FYs) 2019-20 through 2023-24, and \$163M allocated over the first two years.

The 2020 CIP Update incorporates a net increase of \$194.8M in programming and allocations to the current approved 2020 CIP five-year programming window, and includes incorporating these key changes:

- 1) \$171.2M in previous programming actions that have occurred since the original June 2019 2020 CIP approval;
- 2) \$11.1M in a new programming recommendations and allocation adjustments; and
- 3) \$6.5M in deprogramming from projects with revised project delivery/funding needs, and unspent balances.

The resultant 2020 CIP Update recommended for approval includes an updated five-year programming total of \$416.9M, with \$357.4M allocated over the first two fiscal years.

The 2022 CIP Update also contains updated CIP guidelines, policies, and procedures for the upcoming 2022 CIP programming process that is expected to begin in the Fall 2020.

Background

Alameda CTC's Comprehensive Investment Plan (CIP) is a near-term strategic programming document through which fund sources administered by Alameda CTC are consolidated and programmed through a singular programming cycle. The CIP's purpose is to strategically program available funds towards transportation investments that support the vision and goals of the Alameda CTC's Countywide Transportation Plan, multi-modal plans, and voter-approved transportation expenditure plans. Alameda CTC updates the CIP annually, as needed, to incorporate new programming actions, programming actions previously approved by the Commission that have occurred since the prior CIP's approval, adjustments to prior programming and allocations that reflect project schedule modifications, changes in priorities, policies and procedural updates, new regulations, and funding adjustments.

On June 17, 2019, the current 2020 CIP was approved by the Commission and included a five-year programming horizon from fiscal years (FYs) 2019-20 to 2023-24, with a two-year allocation plan for the first two fiscal years of the CIP. At the time of its adoption, the current 2020 CIP included approximately \$222M in programming, and \$163M in allocations. Since its approval, the Commission has taken various programming actions including new funding, allocations and allocation adjustments to support the delivery of projects implemented by Alameda CTC and other agencies. These actions are proposed to be incorporated into the CIP document as the 2020 CIP Update.

The 2020 CIP Update includes changes falling within the programming themes below.

1. Previously Approved Programming - \$171.2M

The 2020 CIP Update memorializes the separate Commission actions taken since the approval of the 2020 CIP in June 2019. These actions included allocation of Measure BB to leverage external state and regional funds received for Alameda CTC projects such as the SR-84/I-680 Interchange Improvements, 7th Street Grade Separation and Port Arterial Improvement Project, and the Safe Routes to School Program.

These previously occurring programming actions are included in Attachment A: Summary of Programming Adjustments.

2. New Programming and Allocation Adjustments - \$11.1M

The 2020 CIP Update includes \$11.1M in new programming recommendations, and allocation adjustments of \$3.3M between existing CIP projects.

- A. *New Programming:* The \$11.1M in new programming includes \$10.0M for the Metropolitan Transportation Commission (MTC) Bay Bridge Forward Initiative projects, which include planning through construction investments to the I-580 Westbound HOV Extension, I-80 HOV Extension (Emeryville), I-80 Design Alternative Analysis (DAA), I-80 Powell, Bay Bridge bicycle/pedestrian LINK improvements. Additionally, \$1.1M is recommended for the I-80 Gilman Interchange Project to complete the funding plan to support construction this year.

- B. *Allocation Adjustments:* The \$3.3M in allocation adjustments between projects are at the request of the project sponsors. In coordination with Alameda CTC, the City of Berkeley requested to reprogram \$1.3M from its Railroad Crossing Safety Improvement Project to the Alameda CTC's I-80/Gilman Interchange Improvement project due to overlapping scopes of these projects in regards to the Gilman railroad crossings. This reallocation joins Alameda CTC's and Berkeley efforts to improve railroad crossing safety at Gilman in a cohesive delivery approach. Secondly, the City of Fremont requested \$2.0M reprogrammed from the Sabercat Trail Connection to Irvington BART Station Area Project to the I-680 Interchange Modernization & Area Improvements Project. The City successfully secured external funds for the Sabercat Trail project, and requests reprogramming its share of Measure BB Dumbarton Corridor Area Transportation Improvement funds to the I-680 project.

These programming adjustments are included in Attachment A: Summary of Programming Adjustments.

3. Deprogramming/Deallocations - \$6.5M

The following recommended deprogramming and deallocations were coordinated with the Project Sponsors, and are identified specifically on Attachment A: Summary of Programming Adjustments.

- A. *Project Implementation Issues and/or Revised Delivery Strategies*: \$5.8M is recommended to be deprogrammed from various projects based on the CIP's timely use of funds requirements. These allocations were made as part of the 2016 CIP and Project Sponsors have indicated revised delivery approaches for their projects. Project Sponsors plan to resubmit their projects for reconsideration in future CIP programming cycles when these projects are ready for implementation.

- B. *Deprogramming Unspent Balances*: The 2020 CIP Update includes deprogramming of \$0.7M from Project Sponsors that have completed the scope of work with cost savings, or have a revised project funding need.

These deprogrammed funds will be returned to the source of origination, and will be reprogrammed in future CIP programming cycles.

As a result, collective changes above effectively increase the current approved 2020 CIP programming by approximately \$194.8M. The 2020 CIP Update includes \$416.9M in programming over FY 2019/20 through FY 2023/23, with \$357.4M in allocations during the first two years of the CIP. The formal CIP record is shown in Attachment B: 2020 CIP Update Programming and Allocations.

CIP Programming Guidelines, Policies, and Procedures Updates

The CIP contains programming, policies and procedural guidelines that serve as the basis for Alameda CTC's programming decisions and funding administration. These policies and guidelines are updated periodically with each CIP update.

The CIP continues to maintain the previously approved core programming principles which state projects must satisfy the following programming requirements to be considered for programming and allocation by Alameda CTC.

1. Projects must be included in, and be consistent with the most current adopted Regional Transportation Plan and Alameda CTC's Countywide Transportation Plan.
2. Projects must demonstrate a public benefit towards building and maintaining the transportation infrastructure in Alameda County.
3. Projects must be publicly accessible and provide direct benefits to public transportation infrastructure and operations.
4. Projects must meet the goals and objectives of the funding sources and programs that are ultimately recommended by Alameda CTC.

5. Projects funded with 2000 Measure B, 2014 Measure BB, and VRF must be consistent with requirements and priorities of their respective expenditure plans.

The CIP considers all available fund sources and prioritizes, evaluates and programs funds to critical transportation infrastructure and operational needs that build and maintain the county's transportation system. Proposed projects will be scored on weighted scores for Project Readiness (45%), Needs/Benefits (45%), and Matching Funds (10%).

The 2020 CIP Update includes new and updated policies that are consistent with Alameda CTC's aim to maximize the use and efficiency of Alameda CTC's administered funds sources. These policies include:

- Matching and Leveraging Policy: For projects that have successfully secured other non-Alameda CTC discretionary funding, Alameda CTC shall consider fulfilling a portion of the minimum match required by external funding for projects and programs. The purpose of this policy is to maximize the leveraging capacity of Alameda CTC Administered Funds such as Measure B, Measure BB, Vehicle Registration Fee Program, Transportation Fund for Clean Air Program funds.
- Timely Use of Funds Policy: Allocations shall be encumbered in a funding agreement between Alameda CTC and the recipient agency incurring the reimbursable costs, or in a contract for costs incurred directly by Alameda CTC, within twelve (12) months from the date the allocation is approved by the Commission. Project Sponsors may request time extension(s) to funding-related deadlines established by policy, deadlines required at the time of allocation, or expiration dates established in funding agreements. Project Sponsors are limited to receiving a single time-extension of up to twenty-four (24) months that is required to be approved by the Commission.
- Local Cooperation Policy: Project Sponsors receiving DLD funds are not eligible to receive a reimbursement of staff time costs through allocations of Alameda CTC Administered Funds for oversight activities that are not directly related to project implementation. Local jurisdiction(s) shall work in full cooperation with the implementing agency to assist in project implementation and delivery, where appropriate and as needed. This includes providing support, coordination, monitoring, technical assistance, etc. A local jurisdiction's costs associated with these activities to further a project implemented by Alameda CTC, a local jurisdiction (as the Project Sponsor), or another implementing agency within a jurisdiction's locality shall be funded through the local jurisdiction's eligible local fund sources such as Measure B/BB/Vehicle Registration Fee Direct Local Distribution (DLD) funds in lieu of a local jurisdiction billing these costs directly to the project or against its funding allocation.

- Small Cities Program Policy: Cities within Alameda County with a population of less than 25,000 shall be considered for certain exceptions from Alameda CTC's local match requirements and Local Cooperation Policy requirements, and local projects that have a demonstrated multi-jurisdictional transportation significance shall receive consideration for delivery support from Alameda CTC, where practical and feasible.

The Alameda CTC's 2020 CIP Update document, which includes the CIP background, programming and allocation records, programming principles, policies and procedures is available here: https://www.alamedactc.org/wp-content/uploads/2020/04/2020_CIP_Update_DRAFT_20200428.pdf.

Next Steps

Alameda CTC is scheduled to begin the development and release call for projects for the next CIP (2022 CIP) this Fall. As part of the next 2022 CIP, Alameda CTC will shift the programming window to include FYs 2021-22 through 2025-26. The focus will be completing the two-year allocation window of the 2022 CIP (FYs 2021-22 and 2022-23) and investing in projects that are ready for immediate implementation. This programming cycle is estimated to be approximately \$25M consisting of Measure B and Vehicle Registration Fee Program Funds. Additional funds will be made available starting in FY 2022-23 in coordination with the anticipated federal One Bay Area Grant Cycle 3 programming schedule.

The schedule for the 2022 CIP development is described below.

2022 CIP Call for Project Schedule	
May 2020	2020 CIP Update Approved
November 1, 2020	Open 2022 CIP Call for Projects
November 2020	CIP Application Workshop (TBD)
Mid-December, 2020	CIP Applications Due to Alameda CTC
April 2021	2022 CIP DRAFT Recommendations

Fiscal Impact: The recommended actions will result in the subsequent encumbrance and expenditure of the funds allocated through the 2020 CIP Update. The corresponding encumbrance amounts will be included in the annual budget of the Alameda CTC for the applicable fiscal year.

Attachments:

- A. Summary of Programming Adjustments
- B. 2020 CIP Update Programming and Allocations

2020 Comprehensive Investment Plan Update
Summary of New Programming Adjustments

Table 1A: Previously Approved Programming					
<i>Previously Approved Programming Actions made after the 2020 CIP approval (June 17, 2019).</i>					
CIP ID	Project Sponsor	Project Name	Total Programming (\$ x \$1,000)	Commission Approval Date	Notes
00071	Alameda CTC	SR-84/I-680 Interchange and SR-84 Widening	\$87,700	3/26/2020	Previously approved.
00155	Alameda CTC	7th Street Grade Separation and Port Arterial Improvements Project	\$60,000	1/30/2020 & 2/27/2020	Previously approved.
00208	Alameda CTC	Alameda County Safe Routes to School Program	\$418	4/25/2019	Previously approved.
00118	Alameda CTC	I-680 Sunol Express Lanes	(\$10,000)	7/22/2019	Reprogrammed to I-680 Sunol Express Lanes: SR84 to Alcosta (CIP 00210).
00210	Alameda CTC	I-680 Sunol Express Lanes: SR84 to Alcosta	\$22,500	7/22/2019	Previously approved.
00278	Alameda CTC	I-580 Toll System Upgrade	\$6,420	5/23/2019	Previously approved.
00280	Alameda CTC	Toll Revenue Forecasting	\$170	5/23/2019	Previously approved.
00323	Oakland	Broadway Transit Lanes	\$4,000	10/24/2019	Previously approved.
Total			\$171,208		

Table 1B: New Programming					
<i>New Programming recommended as part of the 2020 CIP Update.</i>					
CIP ID	Project Sponsor	Project Name	Total Programming (\$ x \$1,000)	Notes	
00069	Alameda CTC	I-80 Gilman Street Interchange Improvements	\$2,400	Berkeley and Alameda CTC coordinated to reprogram \$1.3M from the Berkeley Railroad Crossing Safety Improvement Project (CIP ID 00222), and recommends an additional \$1.1M to support I-80/Gilman Interchange.	
00324	MTC / Alameda CTC	I-580 HOV Extension	\$4,750	New programming recommendation to implement the Metropolitan Transportation Commission (MTC) Bay Bridge Forward project initiatives.	
00325	MTC / Alameda CTC	I-80 HOV Lane Extension (Emeryville Crescent)	\$1,500	New programming recommendation to implement the Metropolitan Transportation Commission (MTC) Bay Bridge Forward project initiatives.	
00326	MTC / Alameda CTC	I-80 DAA and Near-term improvements	\$500	New programming recommendation to implement the Metropolitan Transportation Commission (MTC) Bay Bridge Forward project initiatives.	
00327	MTC / Alameda CTC	I-80 Powell Interchange	\$250	New programming recommendation to implement the Metropolitan Transportation Commission (MTC) Bay Bridge Forward project initiatives.	
00328	MTC / Alameda CTC	Bay Bridge Bicycle/Pedestrian Link	\$3,000	New programming recommendation to implement the Metropolitan Transportation Commission (MTC) Bay Bridge Forward project initiatives.	
00222	Berkeley	Railroad Crossing Safety Improvement Project	(\$1,300)	Project Sponsor requested to reprogram funds to I-80/Gilman Interchange (CIP ID 00069).	
00305	Fremont	I-680 Interchange Modernization & Area Impvts. (Mission Blvd, Washington, Auto Mall Pkwy, Auto Mall Pkwy / WarmSprings Intersection)	\$2,000	Sponsor requests reprogramming Fremont's share of MBB TEP-21 funds from Sabercat Trail Connection to Irvington BART Station Area (CIPID 00311) to support expanded scope.	
00311	Fremont	Sabercat Trail Connection to Irvington BART Station Area	(\$2,000)	Sponsor requested reprogramming to I-680 Interchange Modernization & Area Impvts (CIPID 00305); Fremont implementing project locally.	
Total			\$11,100		

Summary of Deprogramming Adjustments

Table 2A: Deprogramming Funds				
<i>Deprogrammed funds due to Project Sponsor not proceeding with project.</i>				
CIP ID	Project Sponsor	Project Name	Total Programming (\$ x \$1,000)	Notes
00076	Alameda CTC	I-880 NB HOV/HOT Extension from A Street to Hegenberger	(\$100)	Project Sponsor not proceeding at this time.
00158	Alameda CTC	Modal Plans Implementation: Alameda Countywide Transit Plan Implementation	(\$300)	Project Sponsor implementing project through other project development efforts.
00213	Albany	Buchanan Bikeway Phase III	(\$600)	Project Sponsor noted delivery issues and will explore resubmitting in future CIPs.
00257	Oakland	Coliseum Transit Hub	(\$4,846)	Project Sponsor noted delivery issues and will explore resubmitting in future CIPs.
Total			(\$5,846)	

Table 2B: Deprogramming Unspent Balances			
<i>Deprogramming balance due to project and/or scope completion.</i>			
CIP ID	Project Sponsor	Project Name	Total Programming (\$ x \$1,000)
00019	Alameda CTC	Countywide Bicycle Pedestrian Planning/Promotion	(\$410)
00059	BART	Bay Fair Connector/BART Metro	(\$15)
00022	BORP	Accessible Group Trip Transportation for Youth and Adults with Disabilities	(\$33)
00269	BORP	Accessible Group Trip Transportation for Youth and Adults with Disabilities (FY 17/18 and FY 18/19)	(\$12)
00271	Emeryville	Tri-City Mobility Management and Travel Training Program (FY 17/18 and FY 18/19)	(\$18)
00025	Fremont	Tri-City Mobility Management and Travel Training Program	(\$19)
00026	Fremont	Tri-City Volunteer Driver Programs	(\$1)
00160	LAVTA	Pilot Transit Program for Last Mile Connections	(\$49)
00276	LAVTA	Para-Taxi Program (FY 17/18 and FY 18/19)	(\$18)
00028	Oakland	Taxi-Up & Go Project	(\$12)
00029	Pleasanton	Downtown Route Shuttle (DTR)	(\$25)
00030	SHS	Rides for Seniors	(\$43)
00031	SSPTV	Volunteer Assisted Senior Transportation Program	(\$6)
00277	SSPTV	Volunteer Assisted Senior Transportation Program (FY 17/18 and FY 18/19)	(\$2)
Total			(\$663)

Alameda CTC Comprehensive Investment Plan Five-Year Programming and Two-Year Allocation Plan 2020 CIP Update								Programming and Allocations (\$ x 1,000)						5.1B
								Programme d Amount	Prior Allocations	Two-Year Allocation Plan		Future Programming		
CIP ID	Sponsor	Project Title	PA	Fund Source	Fund Subset	Mode	Phase		Prior Thru FY2018-19 (July 2018)	FY2019-20	FY2020-21	FY2021-22	FY2022-23	FY2023-24
00004	AC Transit	Preservation of Existing Services in Communities of Concern	Multiple	Lifeline	STA	Transit	O&M	3,583	3,583					3,583
00004	AC Transit	Preservation of Existing Services in Communities of Concern	Multiple	Lifeline	JARC	Transit	O&M	1,417	1,417					1,417
00006	AC Transit	Ashland and Cherryland Transit Access Improvements (Ala. County)	Multiple	Lifeline	STA	Transit	CON	450	450					450
00007	AC Transit	Additional Preservation of Existing Services in Communities of Concern	Multiple	Lifeline	STA	Transit	O&M	1,741	1,741					1,741
00009	AC Transit	City of Oakland Broadway Shuttle	1-North	Lifeline	JARC	Transit	O&M	405	405					405
00050	AC Transit	AC Transit: East Bay Bus Rapid Transit	Multiple	TFCA	Prog Mgr	Transit	CON	925	925					925
00050	AC Transit	AC Transit: East Bay Bus Rapid Transit	Multiple	2000 MB	07A	Transit	Various	11,510	11,510					11,510
00050	AC Transit	AC Transit: East Bay Bus Rapid Transit	Multiple	2014 MBB	TEP-13	Transit	CON	10,000	10,000					10,000
00056	AC Transit	Grand/MacArthur BRT	1-North	2014 MBB	TEP-15	Transit	Planning / Scoping	97	97					97
00057	AC Transit	College/Broadway Corridor Transit Priority	1-North	2014 MBB	TEP-16	Transit	Planning / Scoping	100	100					100
00171	AC Transit	Line 97 Corridor Improvements (Signal timing component)	Multiple	TFCA	Prog Mgr	Transit	Various	228	228					228
00193	AC Transit	Berkeley Southside Pilot Transit Lanes (including Telegraph, Bancroft)	1-North	2010 VRF	Disc-Transit	Transit	Various	300	300					300
00194	AC Transit	Rapid Bus Corridor Upgrades (San Pablo and Telegraph Corridors)	1-North	2000 MB	Disc-Transit	Transit	Final Design (PS&E)	447	447					447
00194	AC Transit	Rapid Bus Corridor Upgrades (San Pablo and Telegraph Corridors)	1-North	2000 MB	Disc-Transit	Transit	PE/Env	536	536					536
00194	AC Transit	Rapid Bus Corridor Upgrades (San Pablo and Telegraph Corridors)	1-North	2010 VRF	Disc-Transit	Transit	CON	4,018	4,018					4,018
00087	Alameda	Alameda City Complete Streets	1-North	OBAG	STP	Bike/Ped	CON	505	505					505
00195	Alameda	Alameda Point Bus Rapid Transit - Dedicated Bus Lanes	1-North	2014 MBB	TEP-14	Transit	Planning / Scoping	450	450					450
00195	Alameda	Alameda Point Bus Rapid Transit - Dedicated Bus Lanes	1-North	2014 MBB	TEP-14	Transit	PE/Env	450	450					450
00195	Alameda	Alameda Point Bus Rapid Transit - Dedicated Bus Lanes	1-North	2014 MBB	TEP-14	Transit	Final Design (PS&E)	450	450					450
00195	Alameda	Alameda Point Bus Rapid Transit - Dedicated Bus Lanes	1-North	2014 MBB	TEP-14	Transit	CON	7,650			7,650			
00196	Alameda	Central Avenue Complete Street	1-North	STP/CMAQ	STP/CMAQ	LSR	CON	3,487		3,487				3,487
00197	Alameda	City Wide Street Resurfacing - Pavement Management	1-North	STP/CMAQ	LSR	LSR	CON	827		827				827
00198	Alameda	Clement Avenue Complete Street	1-North	STP/CMAQ	STP/CMAQ	LSR	PE/Env	124	124					124

Alameda CTC Comprehensive Investment Plan Five-Year Programming and Two-Year Allocation Plan 2020 CIP Update								Programming and Allocations (\$ x 1,000)							
								Programme d Amount	Prior Allocations	Two-Year Allocation Plan		Future Programming			Total Allocated (Thru FY20-21)
									Prior Thru FY2018-19 (July 2018)	FY2019-20	FY2020-21	FY2021-22	FY2022-23	FY2023-24	
CIP ID	Sponsor	Project Title	PA	Fund Source	Fund Subset	Mode	Phase								
00198	Alameda	Clement Avenue Complete Street	1-North	STP/CMAQ	STP/CMAQ	LSR	Final Design (PS&E)	443	443				443		
00198	Alameda	Clement Avenue Complete Street	1-North	STP/CMAQ	STP/CMAQ	LSR	CON	4,451		4,451			4,451		
00199	Alameda	Clement Avenue East Extension and Tilden Way	1-North	2014 MBB	TEP-26	LSR	Planning / Scoping	244	244				244		
00199	Alameda	Clement Avenue East Extension and Tilden Way	1-North	2014 MBB	TEP-26	LSR	PE/Env	244	244				244		
00199	Alameda	Clement Avenue East Extension and Tilden Way	1-North	2014 MBB	TEP-26	LSR	Final Design (PS&E)	434	434				434		
00199	Alameda	Clement Avenue East Extension and Tilden Way	1-North	2014 MBB	TEP-26	LSR	ROW	1,097	1,097				1,097		
00199	Alameda	Clement Avenue East Extension and Tilden Way	1-North	2014 MBB	TEP-26	LSR	CON	6,376			6,376				
00200	Alameda	Seaplane Lagoon Ferry Terminal	1-North	2014 MBB	TEP-45	Transit	CON	8,200		8,200			8,200		
00314	Alameda	Otis Drive Traffic Calming and Safety Improvement Project	1-North	TFCA	Prog Mgr	Transit	CON	175		175			175		
00088	Alameda County	Alameda Co-Variou Streets and Roads Preservation	Multiple	OBAG	STP	LSR	CON	1,565	1,565				1,565		
00127	Alameda County	Hesperian Blvd Corridor Improvement (A St - I880)	2-Central	2014 MBB	TEP-26	LSR	CON	7,000	7,000				7,000		
00162	Alameda County	East Castro Valley Boulevard Class II Bike Lanes	4-East	TFCA	Prog Mgr	Bike/Ped	Various	62	62				62		
00201	Alameda County	Alameda County Parking Demand and Management Strategy Study	2-Central	2000 MB	Disc-TCD	Transit	Planning / Scoping	88	88				88		
00202	Alameda County	East 14th St. Corridor Improvement Project Phase II (San Leandro Area)	2-Central	2014 MBB	TEP-26	LSR	CON	7,600		7,600			7,600		
00202	Alameda County	East 14th St. Corridor Improvement Project Phase II (San Leandro Area)	2-Central	TFCA	Prog Mgr	Bike/Ped	CON	245		245			245		
00203	Alameda County	Meekland Avenue Corridor Improvement Phase II (Cherryland/Ashland Area)	2-Central	STP/CMAQ	STP/CMAQ	LSR	CON	9,300			9,300		9,300		
00204	Alameda County	Pavement Preservation - Various Roadways in Central Unincorporated Alameda County	4-East	STP/CMAQ	LSR	LSR	PE/Env	100	100				100		
00204	Alameda County	Pavement Preservation - Various Roadways in Central Unincorporated Alameda County	4-East	STP/CMAQ	LSR	LSR	CON	2,071	2,071				2,071		
00205	Alameda County	Pavement Preservation - Various Roadways in Rural Unincorporated Alameda County (FAS)	2-Central	STP/CMAQ	LSR	LSR	PE/Env	100	100				100		
00205	Alameda County	Pavement Preservation - Various Roadways in Rural Unincorporated Alameda County (FAS)	2-Central	STP/CMAQ	LSR	LSR	CON	1,679	1,679				1,679		
00319	Alameda County	Hesperian Blvd Class 2 Bike Lanes	2-Central	TFCA	Prog Mgr	Bike/Ped	CON	137	137				137		
00217	Alameda County / LAVTA	Dublin/Pleasanton BART Parking Expansion	4-East	2010 VRF	Disc-Transit	Transit	Various	7,000		7,000			7,000		
00019	Alameda CTC	Countywide Bicycle Pedestrian Planning/Promotion	Multiple	2000 MB	Disc-BP	Bike/Ped	Various	8	8				8		

Alameda CTC Comprehensive Investment Plan Five-Year Programming and Two-Year Allocation Plan 2020 CIP Update								Programming and Allocations (\$ x 1,000)						
								Programme d Amount	Prior Allocations	Two-Year Allocation Plan		Future Programming		Total Allocated (Thru FY20-21)
									Prior Thru FY2018-19 (July 2018)	FY2019-20	FY2020-21	FY2021-22	FY2022-23	
CIP ID	Sponsor	Project Title	PA	Fund Source	Fund Subset	Mode	Phase							
00033	Alameda CTC	Transportation Services for Hospital Discharge and Wheelchair/Scooter Breakdown	Multiple	2000 MB	Disc-PT	Paratransit	O&M	109	109					109
00053	Alameda CTC	Affordable Student Transit Pass Programs	Multiple	2014 MBB	TEP-08	Transit	O&M	15,000	15,000					15,000
00054	Alameda CTC	Affordable Transit for Seniors and People with Disabilities - Needs Assessment	Multiple	2014 MBB	TEP-12	Paratransit	Planning / Scoping	1	1					1
00069	Alameda CTC	I-80 Gilman Street Interchange Improvements	1-North	2014 MBB	TEP-29	HWY	PE/Env	3,000	3,000					3,000
00069	Alameda CTC	I-80 Gilman Street Interchange Improvements	1-North	2014 MBB	TEP-29	HWY	Final Design (PS&E)	6,600	6,600					6,600
00069	Alameda CTC	I-80 Gilman Street Interchange Improvements	1-North	2014 MBB	TEP-29	HWY	ROW	2,400	2,400					2,400
00069	Alameda CTC	I-80 Gilman Street Interchange Improvements	1-North	2014 MBB	TEP-27	HWY	CON	2,400		2,400				2,400
00070	Alameda CTC	I-80 Ashby Interchange Improvements	1-North	2014 MBB	TEP-30	HWY	Planning / Scoping	100	100					100
00070	Alameda CTC	I-80 Ashby Interchange Improvements	1-North	2014 MBB	TEP-30	HWY	PE/Env	4,000	4,000					4,000
00070	Alameda CTC	I-80 Ashby Interchange Improvements	1-North	2014 MBB	TEP-30	HWY	Final Design (PS&E)	5,500	5,500					5,500
00071	Alameda CTC	SR-84/I-680 Interchange and SR-84 Widening	4-East	2014 MBB	TEP-31	HWY	PE/Env	4,000	4,000					4,000
00071	Alameda CTC	SR-84/I-680 Interchange and SR-84 Widening	4-East	2014 MBB	TEP-31	HWY	Final Design (PS&E)	16,500	16,500					16,500
00071	Alameda CTC	SR-84/I-680 Interchange and SR-84 Widening	4-East	2014 MBB	TEP-31	HWY	ROW	20,000	10,000	10,000				20,000
00071	Alameda CTC	SR-84/I-680 Interchange and SR-84 Widening	4-East	2014 MBB	TEP-31	HWY	CON	81,500		81,500				81,500
00071	Alameda CTC	SR-84/I-680 Interchange and SR-84 Widening	4-East	2014 MBB	TEP-26	HWY	CON	6,200		6,200				6,200
00072	Alameda CTC	SR-84 Expressway Widening (Pigeon Pass to Jack London)	4-East	2014 MBB	TEP-32	HWY	CON	10,000	10,000					10,000
00075	Alameda CTC	I-680 Sunol Express Lanes: SR-237 to SR84	Multiple	2014 MBB	TEP-35	HWY	Final Design (PS&E)	5,000	5,000					5,000
00075	Alameda CTC	I-680 Sunol Express Lanes: SR-237 to SR84	Multiple	2014 MBB	TEP-35	HWY	CON	15,000	15,000					15,000
00076	Alameda CTC	I-880 NB HOV/HOT Extension from A Street to Hegenberger	Multiple	2014 MBB	TEP-36	HWY	Planning / Scoping							
00077	Alameda CTC	I-880 Whipple Road/Industrial Parkway Southwest Interchange Improvements	Multiple	2014 MBB	TEP-38	HWY	Planning / Scoping	925	925					925
00077	Alameda CTC	I-880 Whipple Road/Industrial Parkway Southwest Interchange Improvements	Multiple	2014 MBB	TEP-38	HWY	PE/Env	4,750	4,750					4,750
00078	Alameda CTC	I-880 Industrial Parkway Interchange West Improvements	Multiple	2014 MBB	TEP-39	HWY	Planning / Scoping	825	825					825
00078	Alameda CTC	I-880 Industrial Parkway Interchange West Improvements	Multiple	2014 MBB	TEP-39	HWY	PE/Env	4,750	4,750					4,750

Alameda CTC Comprehensive Investment Plan Five-Year Programming and Two-Year Allocation Plan 2020 CIP Update								Programming and Allocations (\$ x 1,000)							
								Programme d Amount	Prior Allocations	Two-Year Allocation Plan		Future Programming			Total Allocated (Thru FY20-21)
									Prior Thru FY2018-19 (July 2018)	FY2019-20	FY2020-21	FY2021-22	FY2022-23	FY2023-24	
CIP ID	Sponsor	Project Title	PA	Fund Source	Fund Subset	Mode	Phase								
00081	Alameda CTC	East Bay Greenway: Lake Merritt BART to South Hayward BART	Multiple	2014 MBB	TEP-42	Bike/Ped	PE/Env	3,500	3,500					3,500	
00081	Alameda CTC	East Bay Greenway: Lake Merritt BART to South Hayward BART	Multiple	2014 MBB	TEP-42	Bike/Ped	Final Design (PS&E)	12,000				12,000			
00084	Alameda CTC	East-West Connector in Fremont & Union City	3-South	1986 MB	MB226	LSR	CON	85,500	85,500					85,500	
00117	Alameda CTC	I-680 Sunol SB Express Lane	Multiple	2000 MB	08A	HWY	O&M	4,500	4,500					4,500	
00117	Alameda CTC	I-680 Sunol SB Express Lane	Multiple	2000 MB	08A	HWY	CON	20,000	20,000					20,000	
00118	Alameda CTC	I-680 Sunol Express Lanes	Multiple	2000 MB	08B	HWY	Final Design (PS&E)	4,500	4,500					4,500	
00118	Alameda CTC	I-680 Sunol Express Lanes	Multiple	2014 MBB	TEP-35	HWY	CON	10,000	10,000					10,000	
00118	Alameda CTC	I-680 Sunol Express Lanes	Multiple	2000 MB	08B	HWY	CON	100,000	100,000					100,000	
00120	Alameda CTC	Alameda County Rail Strategy Study	Multiple	2014 MBB	TEP-27	Freight	Planning / Scoping	250	250					250	
00131	Alameda CTC	I-580 Freeway Corridor Management System (FCMS)	4-East	2014 MBB	TEP-26	HWY	Planning / Scoping	17	17					17	
00132	Alameda CTC	San Pablo Avenue (SR 123) Multi-Modal Corridor Project	1-North	2014 MBB	TEP-26	LSR	Planning / Scoping	9,550	9,550					9,550	
00136	Alameda CTC	I-880/23rd-29th Avenue Interchange Improvements	1-North	2014 MBB	TEP-40	HWY	CON	8,000	8,000					8,000	
00138	Alameda CTC	I-880/Winton Avenue and A Street Interchanges	2-Central	2014 MBB	TEP-40	HWY	Planning / Scoping	1,808	1,808					1,808	
00138	Alameda CTC	I-880/Winton Avenue and A Street Interchanges	2-Central	2014 MBB	TEP-40	HWY	PE/Env	3,500	3,500					3,500	
00139	Alameda CTC	South County Access (SR 262/Mission Blvd Cross Connector)	3-South	2014 MBB	TEP-40	HWY	Planning / Scoping	1,500	1,500					1,500	
00139	Alameda CTC	South County Access (SR 262/Mission Blvd Cross Connector)	3-South	2014 MBB	TEP-40	HWY	PE/Env	7,500	7,500					7,500	
00155	Alameda CTC	7th Street Grade Separation and Port Arterial Improvements Project	1-North	2014 MBB	TEP-27	Freight	PE/Env	35,020	35,020					35,020	
00155	Alameda CTC	7th Street Grade Separation and Port Arterial Improvements Project	1-North	2014 MBB	TEP-27	Freight	Final Design (PS&E)	18,000	18,000					18,000	
00155	Alameda CTC	7th Street Grade Separation and Port Arterial Improvements Project	1-North	2014 MBB	TEP-27	Freight	ROW	23,000		23,000				23,000	
00155	Alameda CTC	7th Street Grade Separation and Port Arterial Improvements Project	1-North	2014 MBB	TEP-27	Freight	CON	37,000		37,000				37,000	
00156	Alameda CTC	Modal Plans Implementation: E. 14th and Mission Blvd Corridors	Multiple	2014 MBB	TEP-26	Multiple	Various	4,200	1,950	2,250				4,200	
00157	Alameda CTC	Modal Plans Implementation: Alameda Countywide Goods Movement Plan	Multiple	2014 MBB	TEP-41	Freight	Various	300	300					300	
00158	Alameda CTC	Modal Plans Implementation: Alameda Countywide Transit Plan Implementation	Multiple	2010 VRF	Disc-Transit	Transit	Various								

Alameda CTC Comprehensive Investment Plan Five-Year Programming and Two-Year Allocation Plan 2020 CIP Update								Programming and Allocations (\$ x 1,000)							
								Programme d Amount	Prior Allocations	Two-Year Allocation Plan		Future Programming			Total Allocated (Thru FY20-21)
									Prior Thru FY2018-19 (July 2018)	FY2019-20	FY2020-21	FY2021-22	FY2022-23	FY2023-24	
CIP ID	Sponsor	Project Title	PA	Fund Source	Fund Subset	Mode	Phase								
00159	Alameda CTC	Matching Program for Last Mile Connection Technology Programs	Multiple	2014 MBB	TEP-46	Transit	Various	200	200					200	
00161	Alameda CTC	Overall Planning/Monitoring Services	Multiple	2014 MBB	TEP-46	Multiple	Various	100	100					100	
00163	Alameda CTC	Countywide Bicycling, Transit and Carpool Promotion Programs	Multiple	TFCA	Prog Mgr	Multiple	Various	210	210					210	
00174	Alameda CTC	Alameda County Guaranteed Ride Home and Countywide TDM Information Services Program	Multiple	TFCA	Prog Mgr	Transit	Various	270	270					270	
00178	Alameda CTC	Sustainable Communities Technical Assistance Program (SCTAP)	Multiple	2000 MB	Disc-TCD	Bike/Ped	Planning / Scoping	200	200					200	
00192	Alameda CTC	Transportation Demand Management (TDM) Program	Multiple	TFCA	Prog Mgr	Transit	O&M	1,089	420	331	338			1,089	
00192	Alameda CTC	Transportation Demand Management (TDM) Program	Multiple	2014 MBB	TEP-45	Transit	O&M	644	434	210				644	
00206	Alameda CTC	Comprehensive Multimodal Monitoring	Multiple	2010 VRF	Disc-Transit	Transit	Planning / Scoping	1,250	1,250					1,250	
00208	Alameda CTC	Alameda County Safe Routes to School Program	Multiple	2000 MB	Disc-BP	Bike/Ped	O&M	1,508	1,090	418				1,508	
00208	Alameda CTC	Alameda County Safe Routes to School Program	Multiple	2000 MB	Disc-BP	Bike/Ped	CON	1,500				500	500	500	
00208	Alameda CTC	Alameda County Safe Routes to School Program	Multiple	CMA-TIP	Other	Bike/Ped	CON	200	200					200	
00208	Alameda CTC	Alameda County Safe Routes to School Program	Multiple	STP/CMAQ	STP/CMAQ	Bike/Ped	O&M	8,372	8,372					8,372	
00209	Alameda CTC	Goods Movement Emissions Reduction Program	Multiple	2014 MBB	TEP-27	Freight	O&M	6,000	3,000			3,000		3,000	
00210	Alameda CTC	I-680 Sunol Express Lanes: SR84 to Alcosta	4-East	2014 MBB	TEP-35	HWY	PE/Env	7,500	7,500					7,500	
00210	Alameda CTC	I-680 Sunol Express Lanes: SR84 to Alcosta	4-East	2014 MBB	TEP-35	HWY	Final Design (PS&E)	22,500		22,500				22,500	
00211	Alameda CTC	NextGen Technology Pilot Initiative	Multiple	2014 MBB	TEP-46	Multiple	Planning / Scoping	1,000	1,000					1,000	
00278	Alameda CTC	I-580 Toll System Upgrade	4-East	I-580 Toll Revenue	Toll Revenue	HWY	Planning / Scoping	405	405					405	
00278	Alameda CTC	I-580 Toll System Upgrade	4-East	I-580 Toll Revenue	Toll Revenue	HWY	CON	16,595	10,175	6,420				16,595	
00279	Alameda CTC	I-880 Davis Street Interchange	2-Central	2014 MBB	TEP-26	HWY	Final Design (PS&E)	151	151					151	
00279	Alameda CTC	I-880 Davis Street Interchange	2-Central	2014 MBB	TEP-26	HWY	CON	389	389					389	
00280	Alameda CTC	Toll Revenue Forecasting	4-East	I-580 Toll Revenue	Toll Revenue	HWY	Planning / Scoping	500	330	170				500	
00287	Alameda CTC	Oakland Alameda Access Project	1-North	2014 MBB	TEP-37	HWY	PE/Env	5,000		5,000				5,000	
00288	Alameda CTC	Rail Safety Enhancement Program (SEP)	Multiple	2014 MBB	TEP-41	Freight	Planning / Scoping	5,500		5,500				5,500	

Alameda CTC Comprehensive Investment Plan Five-Year Programming and Two-Year Allocation Plan 2020 CIP Update								Programming and Allocations (\$ x 1,000)							
								Programme d Amount	Prior Allocations	Two-Year Allocation Plan		Future Programming			Total Allocated (Thru FY20-21)
									Prior Thru FY2018-19 (July 2018)	FY2019-20	FY2020-21	FY2021-22	FY2022-23	FY2023-24	
CIP ID	Sponsor	Project Title	PA	Fund Source	Fund Subset	Mode	Phase								
00289	Alameda CTC	Student Transit Pass Program	Multiple	2014 MBB	TEP-07	Transit	O&M	23,500		2,800		6,700	6,700	7,300	2,800
00313	Alameda CTC	Countywide Model Update	Multiple	2010 VRF	Disc-Transit	Transit	Planning / Scoping	800		800					800
00176	Alameda CTC	Countywide SR2S Program (FY 16/17 and FY 17/18)	Multiple	TFCA	Prog Mgr	Multiple	O&M	100	100						100
00164	Albany	Marin Ave Class 2 Bike Lane Gap Closure	1-North	TFCA	Prog Mgr	Bike/Ped	Various	95	95						95
00213	Albany	Buchanan Bikeway Phase III	1-North	2000 MB	Disc-BP	Bike/Ped	CON								
00214	Albany	San Pablo Avenue and Buchanan Street Pedestrian Improvements	1-North	STP/CMAQ	LSR	Bike/Ped	CON	340		340					340
00021	ASEB	Special Transportation Services for Individuals with Dementia	Multiple	2000 MB	Disc-PT	Paratransit	O&M	400	400						400
00300	ASEB	Regrowth of Transportation Services for Individuals with Dementia	Multiple	2000 MB	Disc-PT	Paratransit	O&M	797		150	155	159	164	169	305
00005	BART	A Quicker, Safer Trip to the Library to Promote Literacy (Oakland Public Library)	Multiple	Lifeline	STA	Transit	O&M	250	250						250
00058	BART	Irvington BART Station	3-South	2014 MBB	TEP-17	Transit	Planning / Scoping	2,760	2,760						2,760
00058	BART	Irvington BART Station	3-South	2014 MBB	TEP-17	Transit	Final Design (PS&E)	16,450	16,450						16,450
00059	BART	Bay Fair Connector/BART Metro	2-Central	2014 MBB	TEP-18	Transit	Planning / Scoping	85	85						85
00172	BART	BART West Oakland Bike Locker Plaza	1-North	TFCA	Prog Mgr	Transit	Various	55	55						55
00215	BART	BART to Livermore	4-East	TCRP	TCRP	Transit	PE/Env	1,700	1,700						1,700
00215	BART	BART to Livermore	4-East	2000 MB	26	Transit	PE/Env	1,400	1,400						1,400
00216	BART	Bay Fair Connection	2-Central	2014 MBB	TEP-18	Transit	Planning / Scoping	500	500						500
00216	BART	Bay Fair Connection	2-Central	2014 MBB	TEP-18	Transit	PE/Env	5,000	5,000						5,000
00304	BART	19th Street Oakland Interchange Modernization	1-North	2014 MBB	TEP-19	Transit	CON	10,000		10,000					10,000
00318	BART	West Oakland BART Station Bike Locker Expansion	1-North	TFCA	Prog Mgr	Transit	CON	100		100					100
00089	Berkeley	Shattuck Complete Streets and De-couplet	1-North	OBAG	STP	Bike/Ped	CON	2,777	2,777						2,777
00097	Berkeley	Hearst Avenue Complete Streets	1-North	OBAG	STP	Bike/Ped	CON	2,256	2,256						2,256
00165	Berkeley	Berkeley Citywide Bicycle Parking Program	1-North	TFCA	Prog Mgr	Bike/Ped	Various	137	137						137
00177	Berkeley	Hearst Ave Complete Streets	1-North	TFCA	Prog Mgr	Bike/Ped	CON	88	88						88

Alameda CTC Comprehensive Investment Plan Five-Year Programming and Two-Year Allocation Plan 2020 CIP Update								Programming and Allocations (\$ x 1,000)							
								Programme d Amount	Prior Allocations	Two-Year Allocation Plan		Future Programming			Total Allocated (Thru FY20-21)
									Prior Thru FY2018-19 (July 2018)	FY2019-20	FY2020-21	FY2021-22	FY2022-23	FY2023-24	
CIP ID	Sponsor	Project Title	PA	Fund Source	Fund Subset	Mode	Phase								
00184	Berkeley	Berkeley Citywide Bike Parking Program	1-North	TFCA	Prog Mgr	Bike/Ped	CON	180	180					180	
00218	Berkeley	9th Street Bicycle Boulevard Pathway Extension Phase II	1-North	2010 VRF	Disc-BP	Bike/Ped	PE/Env	29	29					29	
00218	Berkeley	9th Street Bicycle Boulevard Pathway Extension Phase II	1-North	2010 VRF	Disc-BP	Bike/Ped	Planning / Scoping	49	49					49	
00218	Berkeley	9th Street Bicycle Boulevard Pathway Extension Phase II	1-North	2010 VRF	Disc-BP	Bike/Ped	Final Design (PS&E)	59	59					59	
00218	Berkeley	9th Street Bicycle Boulevard Pathway Extension Phase II	1-North	2010 VRF	Disc-BP	Bike/Ped	CON	613	613					613	
00220	Berkeley	Milvia Bikeway Project	1-North	2000 MB	Disc-BP	Bike/Ped	PE/Env	350	350					350	
00222	Berkeley	Railroad Crossing Safety Improvement Project	1-North	2014 MBB	TEP-27	Freight	PE/Env	220	220					220	
00222	Berkeley	Railroad Crossing Safety Improvement Project	1-North	2014 MBB	TEP-27	Freight	Final Design (PS&E)								
00223	Berkeley	Southside Complete Streets & Transit Improvements (Telegraph, Bancroft, Dana, Fulton)	1-North	STP/CMAQ	STP/CMAQ	LSR	PE/Env	387	387					387	
00223	Berkeley	Southside Complete Streets & Transit Improvements (Telegraph, Bancroft, Dana, Fulton)	1-North	STP/CMAQ	STP/CMAQ	LSR	Final Design (PS&E)	613	613					613	
00223	Berkeley	Southside Complete Streets & Transit Improvements (Telegraph, Bancroft, Dana, Fulton)	1-North	STP/CMAQ	STP/CMAQ	LSR	CON	7,335	6,121	1,214				7,335	
00022	BORP	Accessible Group Trip Transportation for Youth and Adults with Disabilities	Multiple	2000 MB	Disc-PT	Paratransit	O&M	535	535					535	
00269	BORP	Accessible Group Trip Transportation for Youth and Adults with Disabilities (FY 17/18 and FY 18/19)	Multiple	2014 MBB	TEP-12	Paratransit	O&M	306	306					306	
00302	BORP	Accessible Group Trip Transportation for Youth and Adults with Disabilities	Multiple	2014 MBB	TEP-12	Paratransit	O&M	1,004		180	209	192	198	225	
00023	CIL	Mobility Matters Project	Multiple	2000 MB	Disc-PT	Paratransit	O&M	679	679					679	
00270	CIL	Community Connections: A Mobility Management Partnership (CoCo) (FY 17/18 and FY 18/19)	Multiple	2000 MB	Disc-PT	Paratransit	O&M	500	500					500	
00293	CIL	Community Connections Program (CoCo)	Multiple	2000 MB	Disc-PT	Paratransit	O&M	940		188	188	188	188	188	
00291	CRIL	Travel Training: Oh The Places You Will Go!	Multiple	2000 MB	Disc-PT	Paratransit	O&M	486		162	162	162		324	
00173	CSU East Bay	CSUEB Campus Shuttle II, FYs 15/16 (non-peak) & 16/17 (all hrs)	2-Central	TFCA	Prog Mgr	Transit	Various	123	123					123	
00182	CSU East Bay	CSUEB/Hayward BART - 2nd Shuttle Operations (FY 17/18 - 18/19)	2-Central	TFCA	Prog Mgr	Transit	O&M	128	128					128	
00320	CSU East Bay	CSUEB/Hayward BART - 2nd Shuttle Operations	2-Central	TFCA	Prog Mgr	Transit	O&M	215	215					215	
00274	Drivers for Survivors	Drivers for Survivors Volunteer Driver Program (FY 17/18 and FY 18/19)	3-South	2014 MBB	TEP-12	Paratransit	O&M	220	220					220	
00295	Drivers for Survivors	Drivers for Survivors Volunteer Driver Program	Multiple	2000 MB	Disc-PT	Paratransit	O&M	970		194	194	194	194	194	

Alameda CTC Comprehensive Investment Plan Five-Year Programming and Two-Year Allocation Plan 2020 CIP Update								Programming and Allocations (\$ x 1,000)							
								Programme d Amount	Prior Allocations	Two-Year Allocation Plan		Future Programming			Total Allocated (Thru FY20-21)
									Prior Thru FY2018-19 (July 2018)	FY2019-20	FY2020-21	FY2021-22	FY2022-23	FY2023-24	
CIP ID	Sponsor	Project Title	PA	Fund Source	Fund Subset	Mode	Phase								
00052	Dublin	Iron Horse Transit Route - Dougherty Road	4-East	2000 MB	09	Multiple	CON	6,267	6,267						6,267
00090	Dublin	Dublin Boulevard Preservation	4-East	OBAG	STP	LSR	CON	470	470						470
00123	Dublin	Dougherty Rd Widening (from 4 to 6 Lns) (Dublin - CCC line)	4-East	2014 MBB	TEP-26	LSR	CON	11,200	11,200						11,200
00124	Dublin	Dublin Blvd. Widening, WB from 2 to 3 Lns (Sierra Ct-Dougherty Rd)	4-East	2014 MBB	TEP-26	LSR	CON	3,000	3,000						3,000
00166	Dublin	San Ramon Road Arterial Mgmt	4-East	TFCA	Prog Mgr	LSR	Various	146	146						146
00224	Dublin	City of Dublin Street Rehab	4-East	STP/CMAQ	LSR	LSR	CON	661		661					661
00225	Dublin	Dublin Boulevard - North Canyons Parkway Extension	4-East	2014 MBB	TEP-26	LSR	PE/Env	2,374	2,374						2,374
00225	Dublin	Dublin Boulevard - North Canyons Parkway Extension	4-East	2014 MBB	TEP-26	LSR	Final Design (PS&E)	5,374	5,374						5,374
00226	Dublin	Iron Horse Trail Crossing at Dublin Boulevard	4-East	2014 MBB	TEP-42	Bike/Ped	PE/Env	166	166						166
00226	Dublin	Iron Horse Trail Crossing at Dublin Boulevard	4-East	2014 MBB	TEP-42	Bike/Ped	Final Design (PS&E)	1,128	1,128						1,128
00226	Dublin	Iron Horse Trail Crossing at Dublin Boulevard	4-East	2014 MBB	TEP-42	Bike/Ped	CON	4,751		4,751					4,751
00226	Dublin	Iron Horse Trail Crossing at Dublin Boulevard	4-East	TFCA	Prog Mgr	Bike/Ped	CON	856		856					856
00315	Dublin	Tassajara Road Arterial Management Project	4-East	TFCA	Prog Mgr	Transit	CON	146		146					146
00227	EBRPD	San Francisco Bay Trail - Albany Beach to Buchanan	1-North	2014 MBB	TEP-42	Bike/Ped	CON	642	642						642
00228	EBRPD	San Francisco Bay Trail - Doolittle Drive	1-North	2014 MBB	TEP-42	Bike/Ped	CON	2,833	2,833						2,833
00273	Eden I&R	Mobility Management Through 211 Alameda County (FY 17/18 and FY 18/19)	3-South	2000 MB	Disc-PT	Paratransit	O&M	296	296						296
00292	Eden I&R	Mobility Management Through 211 Alameda County	Multiple	2000 MB	Disc-PT	Paratransit	O&M	747		136	136	153	157	165	272
00303	EDI	Fast Accessible Safe Transportation Emergency Repair (FASTER)	Multiple	2014 MBB	TEP-12	Paratransit	O&M	952		217	163	225	171	176	380
00024	Emeryville	8-To-Go Demand Response Door to Door Shuttle	Multiple	2000 MB	Disc-PT	Paratransit	O&M	174	174						174
00141	Emeryville	South Bayfront Bridge	1-North	2000 MB	Disc-BP	Bike/Ped	CON	1,895	1,895						1,895
00141	Emeryville	South Bayfront Bridge	1-North	TFCA	Prog Mgr	Bike/Ped	CON	105	105						105
00185	Emeryville	Bay Area Bike Share (BABS) Expansion to Emeryville	1-North	TFCA	Prog Mgr	Bike/Ped	CON	180	180						180
00230	Emeryville	Emery Go Round General Benefit Operations	1-North	2014 MBB	TEP-45	Transit	O&M	2,500	1,000	500	500	500			2,000

Alameda CTC Comprehensive Investment Plan Five-Year Programming and Two-Year Allocation Plan 2020 CIP Update								Programming and Allocations (\$ x 1,000)							
								Programme d Amount	Prior Allocations	Two-Year Allocation Plan		Future Programming			Total Allocated (Thru FY20-21)
									Prior Thru FY2018-19 (July 2018)	FY2019-20	FY2020-21	FY2021-22	FY2022-23	FY2023-24	
CIP ID	Sponsor	Project Title	PA	Fund Source	Fund Subset	Mode	Phase								
00231	Emeryville	Frontage Road, 65th Street and Powell Street Slurry Seal	1-North	STP/CMAQ	LSR	LSR	CON	225		225				225	
00232	Emeryville	North Hollis Parking and Transportation Demand Management (TDM) Program	1-North	2000 MB	Disc-TCD	Transit	CON	930	930					930	
00271	Emeryville	Tri-City Mobility Management and Travel Training Program (FY 17/18 and FY 18/19)	Multiple	2014 MBB	TEP-12	Paratransit	O&M	52	52					52	
00284	Emeryville	Quiet Zone safe Engineering Measures on 65th, 66th and 67th Streets (TCEP Match)	1-North	2014 MBB	TEP-41	Freight	CON	1,800	1,800					1,800	
00301	Emeryville	Emeryville Senior Center Group Trips Bus Purchase	Multiple	2000 MB	Disc-PT	Paratransit	O&M	132		132				132	
00025	Fremont	Tri-City Mobility Management and Travel Training Program	3-South	2000 MB	Disc-PT	Paratransit	O&M	431	431					431	
00026	Fremont	Tri-City Volunteer Driver Programs	3-South	2000 MB	Disc-PT	Paratransit	O&M	549	549					549	
00027	Fremont	Tri-City Taxi Voucher Program	3-South	2000 MB	Disc-PT	Paratransit	O&M	450	450					450	
00091	Fremont	Fremont City Center Multi-Modal Improvements	3-South	OBAG	STP	Multiple	CON	1,288	1,288					1,288	
00140	Fremont	Warm Springs BART Station - West Side Access	3-South	2014 MBB	TEP-45	Transit	CON	25,000	25,000					25,000	
00140	Fremont	Warm Springs BART Station - West Side Access	3-South	2014 MBB	TEP-21	Transit	CON	5,000	5,000					5,000	
00143	Fremont	Scoping: Route 84 Relinquishment and Centerville Streetscape on Fremont Blvd.	3-South	2014 MBB	TEP-26	Multiple	Planning / Scoping	41	41					41	
00152	Fremont	Scoping: Union Pacific Railroad Trail Corridor (South Portion of East Bay Greenway)	3-South	2014 MBB	TEP-42	Multiple	Planning / Scoping	42	42					42	
00153	Fremont	Scoping: Fremont BART Station West Side Enhancement	3-South	2014 MBB	TEP-45	Transit	Planning / Scoping	42	42					42	
00154	Fremont	Scoping: I-880 Bike and Ped Bridge and Trail Connector to Warm Springs BART Station to Bay Trail	3-South	2014 MBB	TEP-45	Bike/Ped	Planning / Scoping	42	42					42	
00179	Fremont	South Fremont Arterial Management (FY 17/18 - 18/19)	3-South	TFCA	Prog Mgr	LSR	CON	425	425					425	
00186	Fremont	Fremont Signal Timing Optimization: Paseo Padre Pkwy, Fremont Blvd, Decoto Rd, and Auto Mall Pkwy	3-South	TFCA	Prog Mgr	LSR	CON	646	646					646	
00233	Fremont	City of Fremont Pavement Rehabilitation Project	3-South	STP/CMAQ	LSR	LSR	CON	2,760		2,760				2,760	
00234	Fremont	Complete Streets Upgrade of Relinquished SR 84 in Centerville PDA	3-South	STP/CMAQ	STP/CMAQ	LSR	PE/Env	386	386					386	
00234	Fremont	Complete Streets Upgrade of Relinquished SR 84 in Centerville PDA	3-South	STP/CMAQ	STP/CMAQ	LSR	Final Design (PS&E)	799	799					799	
00234	Fremont	Complete Streets Upgrade of Relinquished SR 84 in Centerville PDA	3-South	STP/CMAQ	STP/CMAQ	LSR	CON	6,510		6,510				6,510	
00235	Fremont	East Bay Greenway Trail Reach 6 (Innovation District to Bay Trail)	3-South	2014 MBB	TEP-42	Bike/Ped	PE/Env	1,901	1,901					1,901	
00235	Fremont	East Bay Greenway Trail Reach 6 (Innovation District to Bay Trail)	3-South	2014 MBB	TEP-42	Bike/Ped	Final Design (PS&E)	3,553	3,553					3,553	

Alameda CTC Comprehensive Investment Plan Five-Year Programming and Two-Year Allocation Plan 2020 CIP Update								Programming and Allocations (\$ x 1,000)							
								Programme d Amount	Prior Allocations	Two-Year Allocation Plan		Future Programming			Total Allocated (Thru FY20-21)
									Prior Thru FY2018-19 (July 2018)	FY2019-20	FY2020-21	FY2021-22	FY2022-23	FY2023-24	
CIP ID	Sponsor	Project Title	PA	Fund Source	Fund Subset	Mode	Phase								
00236	Fremont	Safe and Smart Corridor Along Fremont Boulevard	3-South	2014 MBB	TEP-26	LSR	PE/Env	443	443					443	
00236	Fremont	Safe and Smart Corridor Along Fremont Boulevard	3-South	2014 MBB	TEP-26	LSR	Final Design (PS&E)	1,328	1,328					1,328	
00236	Fremont	Safe and Smart Corridor Along Fremont Boulevard	3-South	2014 MBB	TEP-26	LSR	CON	7,525		7,525				7,525	
00238	Fremont	Walnut Avenue Protected Bikeway in City Center/Downtown PDA	3-South	2014 MBB	TEP-45	Bike/Ped	CON	5,000	5,000					5,000	
00272	Fremont	Tri-City Mobility Management and Travel Training Program (FY 17/18 and FY 18/19)	3-South	2000 MB	Disc-PT	Paratransit	O&M	298	298					298	
00290	Fremont	Ride-On Tri-City! Mobility Management and Travel Training Program	3-South	2000 MB	Disc-PT	Paratransit	O&M	731		134	145	149	151	152	
00305	Fremont	I-680 Interchange Modernization & Area Impvts. (Mission Blvd, Washington, Auto Mall Pkwy, Auto Mall Pkwy / WarmSprings Intersection)	3-South	2014 MBB	TEP-21	HWY	Planning / Scoping	3,000		3,000				3,000	
00306	Fremont	I-880/Decoto Interchange Modernization	3-South	2014 MBB	TEP-21	HWY	Planning / Scoping	1,000		1,000				1,000	
00308	Fremont	Niles/Nursery Avenue Railroad Crossing Safety and Quiet Zone	3-South	2014 MBB	TEP-21	Freight	CON	977		977				977	
00309	Fremont	I-880 Bridge at Pacific Commons Trail	3-South	2014 MBB	TEP-21	Bike/Ped	PE/Env	2,100		2,100				2,100	
00311	Fremont	Sabercat Trail Connection to Irvington BART Station Area	3-South	2014 MBB	TEP-21	Bike/Ped	PE/Env								
00322	Fremont	Former State Route 84 Pavement Rehabilitation	3-South	2014 MBB	TEP-21	LSR	CON	2,000		2,000				2,000	
00310	Fremont/ Ala. County	Niles Canyon Trail Phase I	3-South	2014 MBB	TEP-21	Bike/Ped	PE/Env	1,000		1,000				1,000	
00307	Fremont/ Union City	Decoto Boulevard Complete Streets w/Transit Priority Project	3-South	1986 MB	MB226	LSR	Final Design (PS&E)	3,500		3,500				3,500	
00312	Fremont/ Union City	Dumbarton to Quarry Lakes Trail	3-South	2014 MBB	TEP-21	Bike/Ped	PE/Env	2,000		2,000				2,000	
00092	Hayward	Hayward - Industrial Boulevard Preservation	2-Central	OBAG	STP	LSR	CON	1,265	1,265					1,265	
00126	Hayward	Mission Blvd. Phases 2 & 3 (Complete Streets)	2-Central	2014 MBB	TEP-26	LSR	CON	21,500	21,500					21,500	
00241	Hayward	Main Street Complete Street Project	2-Central	STP/CMAQ	STP/CMAQ	LSR	Final Design (PS&E)	175	175					175	
00241	Hayward	Main Street Complete Street Project	2-Central	STP/CMAQ	STP/CMAQ	LSR	CON	1,500	1,500					1,500	
00242	Hayward	SR-92 Clawiter-Whitesell Interchange	2-Central	2014 MBB	TEP-26	HWY	Planning / Scoping	440	440					440	
00243	Hayward	Winton Avenue - Complete Street Project	2-Central	STP/CMAQ	LSR	LSR	Final Design (PS&E)	88	88					88	
00243	Hayward	Winton Avenue - Complete Street Project	2-Central	STP/CMAQ	LSR	LSR	CON	1,662	1,662					1,662	
00283	LARPD/TVC	Valley Trails Connection Project	4-East	CMA-TIP	Other	Bike/Ped	Various	110	110					110	

Alameda CTC Comprehensive Investment Plan Five-Year Programming and Two-Year Allocation Plan 2020 CIP Update								Programming and Allocations (\$ x 1,000)							
								Programme d Amount	Prior Allocations	Two-Year Allocation Plan		Future Programming			Total Allocated (Thru FY20-21)
									Prior Thru FY2018-19 (July 2018)	FY2019-20	FY2020-21	FY2021-22	FY2022-23	FY2023-24	
CIP ID	Sponsor	Project Title	PA	Fund Source	Fund Subset	Mode	Phase								
00008	LAVTA	WHEELS Route 14 Operating Assistance	4-East	Lifeline	STA	Transit	O&M	388	388						388
00008	LAVTA	WHEELS Route 14 Operating Assistance	4-East	Lifeline	JARC	Transit	O&M	129	129						129
00160	LAVTA	Pilot Transit Program for Last Mile Connections	4-East	2000 MB	Disc-Transit	Transit	Various	51	51						51
00175	LAVTA	LAVTA Rte 30 BRT Operations, FYs 15/16 and 16/17	4-East	TFCA	Prog Mgr	Transit	Various	275	275						275
00183	LAVTA	LAVTA Rte 30R Operations (FY 17/18 - 18/19)	4-East	TFCA	Prog Mgr	Transit	O&M	318	318						318
00244	LAVTA	Pleasanton BRT Corridor Enhancement Project (Route 10R)	4-East	2000 MB	Disc-Transit	Transit	Final Design (PS&E)	152	152						152
00244	LAVTA	Pleasanton BRT Corridor Enhancement Project (Route 10R)	4-East	2000 MB	Disc-Transit	Transit	CON	1,262	1,262						1,262
00245	LAVTA	Wheels Forward/2020 Plan	4-East	2000 MB	Disc-Transit	Transit	Planning / Scoping	220		220					220
00298	LAVTA	Para-Taxi Debit Card	4-East	2000 MB	Disc-PT	Paratransit	O&M	87		23	16	16	16	16	39
00299	LAVTA	Para-Taxi Operations	4-East	2000 MB	Disc-PT	Paratransit	O&M	140		24	25	28	30	33	49
00321	LAVTA	LAVTA Rte 30 BRT Operations, FYs 19/20 and 20/21	4-East	TFCA	Prog Mgr	Transit	O&M	477	477						477
00276	LAVTA	Para-Taxi Program (FY 17/18 and FY 18/19)	4-East	2014 MBB	TEP-12	Paratransit	O&M	22	22						22
00275	LIFE ElderCare	VIP Rides Program (FY 17/18 and FY 18/19)	Multiple	2014 MBB	TEP-12	Paratransit	O&M	275	275						275
00296	LIFE ElderCare	Door Through Door (DthruD) and TNC Transportation for Seniors and Disabled Adults	Multiple	2000 MB	Disc-PT	Paratransit	O&M	1,023		150	189	200	234	250	339
00189	Livermore	Iron Horse Trail Gap Closure (Isabel Avenue to Murrieta)	4-East	2014 MBB	TEP-42	Bike/Ped	PE/Env	20	20						20
00189	Livermore	Iron Horse Trail Gap Closure (Isabel Avenue to Murrieta)	4-East	2014 MBB	TEP-42	Bike/Ped	Planning / Scoping	30	30						30
00189	Livermore	Iron Horse Trail Gap Closure (Isabel Avenue to Murrieta)	4-East	2014 MBB	TEP-42	Bike/Ped	Final Design (PS&E)	160	160						160
00189	Livermore	Iron Horse Trail Gap Closure (Isabel Avenue to Murrieta)	4-East	TFCA	Prog Mgr	Bike/Ped	CON	193	193						193
00189	Livermore	Iron Horse Trail Gap Closure (Isabel Avenue to Murrieta)	4-East	2014 MBB	TEP-42	Bike/Ped	CON	1,407	1,407						1,407
00246	Livermore	Livermore Annual Pavement Maintenance - MTS Routes	4-East	STP/CMAQ	LSR	LSR	CON	1,382		1,382					1,382
00247	Livermore	Vasco Road/I-580 Interchange Improvements	4-East	2014 MBB	TEP-34	HWY	PE/Env	1,380	1,380						1,380
00102	MTC	Regional Planning Activities and PPM - Alameda	Multiple	OBAG	STP	Multiple	PE/Env	1,034	1,034						1,034
00324	MTC / Alameda CTC	I-580 WB HOV Extension	Multiple	2010 VRF	Disc-Transit	Transit	Planning / Scoping	75		75					75

Alameda CTC Comprehensive Investment Plan Five-Year Programming and Two-Year Allocation Plan 2020 CIP Update								Programming and Allocations (\$ x 1,000)						
								Programme d Amount	Prior Allocations	Two-Year Allocation Plan		Future Programming		Total Allocated (Thru FY20-21)
									Prior Thru FY2018-19 (July 2018)	FY2019-20	FY2020-21	FY2021-22	FY2022-23	
CIP ID	Sponsor	Project Title	PA	Fund Source	Fund Subset	Mode	Phase							
00324	MTC / Alameda CTC	I-580 WB HOV Extension	Multiple	2010 VRF	Disc-Transit	Transit	PE/Env	325		325				325
00324	MTC / Alameda CTC	I-580 WB HOV Extension	Multiple	2010 VRF	Disc-Transit	Transit	Final Design (PS&E)	350		350				350
00324	MTC / Alameda CTC	I-580 WB HOV Extension	Multiple	2010 VRF	Disc-Transit	Transit	CON	4,000		4,000				4,000
00325	MTC / Alameda CTC	I-80 HOV Lane Extension (Emeryville Crescent)	Multiple	2010 VRF	Disc-Transit	Transit	Planning / Scoping	200		200				200
00325	MTC / Alameda CTC	I-80 HOV Lane Extension (Emeryville Crescent)	Multiple	2010 VRF	Disc-Transit	Transit	PE/Env	500		500				500
00325	MTC / Alameda CTC	I-80 HOV Lane Extension (Emeryville Crescent)	Multiple	2010 VRF	Disc-Transit	Transit	Final Design (PS&E)	800		800				800
00326	MTC / Alameda CTC	I-80 DAA and Near-term improvements	Multiple	2010 VRF	Disc-Transit	Transit	Planning / Scoping	200		200				200
00326	MTC / Alameda CTC	I-80 DAA and Near-term improvements	Multiple	2010 VRF	Disc-Transit	Transit	PE/Env	300		300				300
00327	MTC / Alameda CTC	I-80 Powell Interchange	Multiple	2010 VRF	Disc-Transit	Transit	Planning / Scoping	250		250				250
00328	MTC / Alameda CTC	Bay Bridge Bicycle/Pedestrian LINK	Multiple	2000 MB	Disc-BP	Transit	CON	3,000		3,000				3,000
00099	Newark	Enterprise Drive Complete Streets and Road Diet	3-South	OBAG	STP	Bike/Ped	CON	454	454					454
00116	Newark	Central Avenue Overpass	3-South	2000 MB	025	LSR	Final Design (PS&E)	2,765	2,765					2,765
00116	Newark	Central Avenue Overpass	3-South	2000 MB	025	LSR	CON	11,134	11,134					11,134
00116	Newark	Central Avenue Overpass	3-South	2000 MB	025	LSR	ROW	2,155	2,155					2,155
00248	Newark	Thornton Avenue Pavement Rehabilitation (I-880 to Olive Street)	3-South	STP/CMAQ	LSR	LSR	CON	592	592					592
00028	Oakland	Taxi-Up & Go Project	Multiple	2000 MB	Disc-PT	Paratransit	O&M	350	350					350
00064	Oakland	Oakland Broadway Corridor Transit	1-North	2014 MBB	TEP-24	Transit	Planning / Scoping	50	50					50
00093	Oakland	Lake Merritt BART Bikeways	1-North	OBAG	STP	Bike/Ped	CON	571	571					571
00094	Oakland	Oakland Complete Streets	1-North	OBAG	STP	LSR	CON	3,384	3,384					3,384
00095	Oakland	Lakeside Complete Streets and Road Diet	1-North	OBAG	STP	Bike/Ped	CON	4,446	4,446					4,446
00095	Oakland	Lakeside Complete Streets and Road Diet	1-North	OBAG	CMAQ	Bike/Ped	CON	2,554	2,554					2,554
00100	Oakland	Oakland - Peralta and MLK Blvd Streetscape Phase I	1-North	OBAG	CMAQ	Bike/Ped	CON	5,452	5,452					5,452
00103	Oakland	7th Street West Oakland Transit Village, Phase II	1-North	OBAG	CMAQ	Bike/Ped	CON	3,288	3,288					3,288

Alameda CTC Comprehensive Investment Plan Five-Year Programming and Two-Year Allocation Plan 2020 CIP Update								Programming and Allocations (\$ x 1,000)							
								Programme d Amount	Prior Allocations	Two-Year Allocation Plan		Future Programming			Total Allocated (Thru FY20-21)
									Prior Thru FY2018-19 (July 2018)	FY2019-20	FY2020-21	FY2021-22	FY2022-23	FY2023-24	
CIP ID	Sponsor	Project Title	PA	Fund Source	Fund Subset	Mode	Phase								
00121	Oakland	Oakland Army Base Roadway Infrastructure Improvements	1-North	2014 MBB	TEP-26	Freight	CON	41,000	41,000					41,000	
00122	Oakland	Oakland Army Base Infrastructure Improvements - Truck Parking	1-North	2014 MBB	TEP-26	Freight	CON	5,000	5,000					5,000	
00125	Oakland	14th Ave Streetscape (3 phases) from E. 8th to Highland Hospital	1-North	2014 MBB	TEP-26	LSR	Final Design (PS&E)	1,300	1,300					1,300	
00125	Oakland	14th Ave Streetscape (3 phases) from E. 8th to Highland Hospital	1-North	2014 MBB	TEP-26	LSR	CON	5,300	5,300					5,300	
00137	Oakland	I-880/42nd-High Street Access Improvements	1-North	2014 MBB	TEP-40	HWY	CON	10,000	10,000					10,000	
00167	Oakland	Broadway "B" Shuttle - Non-Peak (10am-3pm) Operations, FY 15/16	1-North	TFCA	Prog Mgr	Transit	Various	210	210					210	
00168	Oakland	CityRacks, Phase 12	1-North	TFCA	Prog Mgr	Bike/Ped	Various	124	124					124	
00180	Oakland	Broadway Shuttle Operations (FY 16/17 - 17/18)	1-North	TFCA	Prog Mgr	Transit	O&M	367	367					367	
00180	Oakland	Broadway Shuttle Operations	1-North	2014 MBB	TEP-45	Transit	O&M	1,650	660	330	330	330		1,320	
00180	Oakland	Broadway Shuttle Operations	1-North	TFCA	Prog Mgr	Transit	O&M	603	338	265				603	
00187	Oakland	Oakland Citywide Bike Parking Program, Phase 13	1-North	TFCA	Prog Mgr	Bike/Ped	CON	100	100					100	
00249	Oakland	27th Street Complete Streets	1-North	2014 MBB	TEP-45	LSR	PE/Env	225	225					225	
00249	Oakland	27th Street Complete Streets	1-North	2014 MBB	TEP-45	LSR	Final Design (PS&E)	1,725	1,725					1,725	
00251	Oakland	E 12th Street Bikeway	1-North	2000 MB	Disc-BP	Bike/Ped	Final Design (PS&E)	250	250					250	
00251	Oakland	E 12th Street Bikeway	1-North	2000 MB	Disc-BP	Bike/Ped	CON	1,250	1,250					1,250	
00251	Oakland	E 12th Street Bikeway	1-North	TFCA	Prog Mgr	Bike/Ped	CON	140	140					140	
00252	Oakland	East Oakland Community Streets Plan	1-North	2014 MBB	TEP-45	LSR	Planning / Scoping	100	100					100	
00253	Oakland	Fruitvale Ave Gap Closure	1-North	2014 MBB	TEP-44	Bike/Ped	CON	1,634		1,634				1,634	
00254	Oakland	Lakeside Family Streets	1-North	STP/CMAQ	STP/CMAQ	LSR	PE/Env	80	80					80	
00254	Oakland	Lakeside Family Streets	1-North	STP/CMAQ	STP/CMAQ	LSR	Final Design (PS&E)	320	320					320	
00254	Oakland	Lakeside Family Streets	1-North	STP/CMAQ	STP/CMAQ	LSR	CON	4,392		4,392				4,392	
00255	Oakland	Laurel Access to Mills, Maxwell Park and Seminary (LAMMPS) Streetscape	1-North	2010 VRF	Disc-BP	Bike/Ped	CON	2,500	2,500					2,500	
00256	Oakland	MacArthur Smart City Corridor Project, Phase I	1-North	2014 MBB	TEP-46	LSR	Final Design (PS&E)	1,500	1,500					1,500	

Alameda CTC Comprehensive Investment Plan Five-Year Programming and Two-Year Allocation Plan 2020 CIP Update								Programming and Allocations (\$ x 1,000)							
								Programme d Amount	Prior Allocations	Two-Year Allocation Plan		Future Programming			Total Allocated (Thru FY20-21)
									Prior Thru FY2018-19 (July 2018)	FY2019-20	FY2020-21	FY2021-22	FY2022-23	FY2023-24	
CIP ID	Sponsor	Project Title	PA	Fund Source	Fund Subset	Mode	Phase								
00256	Oakland	MacArthur Smart City Corridor Project, Phase I	1-North	2014 MBB	TEP-46	LSR	CON	9,500		9,500				9,500	
00257	Oakland	Coliseum Transit Hub	1-North	2010 VRF	Disc-Transit	Transit	Planning / Scoping								
00257	Oakland	Coliseum Transit Hub	1-North	2010 VRF	Disc-Transit	Transit	Final Design (PS&E)								
00258	Oakland	Oakland LSR Paving Program	1-North	STP/CMAQ	LSR	LSR	PE/Env	734	734					734	
00258	Oakland	Oakland LSR Paving Program	1-North	STP/CMAQ	LSR	LSR	CON	4,161	4,161					4,161	
00259	Oakland	OakMob Transportation Demand Management (TDM)	1-North	2014 MBB	TEP-45	Transit	O&M	215	215					215	
00323	Oakland	Broadway Transit Lanes	1-North	2014 MBB	TEP-24	Transit	CON	4,000		4,000				4,000	
00101	Piedmont	Piedmont Complete Streets (CS)	1-North	OBAG	STP	Bike/Ped	CON	129	129					129	
00260	Piedmont	Oakland Avenue Improvements	1-North	STP/CMAQ	LSR	LSR	CON	168	168					168	
00285	Piedmont	Piedmont LSR Exchange Projects	1-North	CMA-TIP	Other	LSR	CON	(208)	(208)					(208)	
00286	Piedmont	Oakland Avenue Pedestrian Bridge Railing Project	1-North	CMA-TIP	Other	LSR	CON	208	208					208	
00029	Pleasanton	Downtown Route Shuttle (DTR)	4-East	2000 MB	Disc-PT	Paratransit	O&M	148	148					148	
00104	Pleasanton	Pleasanton Complete Streets	4-East	OBAG	STP	Bike/Ped	CON	832	832					832	
00169	Pleasanton	Pleasanton Trip Reduction Program, FYs 15/16 & 16/17	4-East	TFCA	Prog Mgr	Transit	Various	53	53					53	
00188	Pleasanton	Pleasanton Trip Reduction Program (FY 17/18 - 18/19)	4-East	TFCA	Prog Mgr	Bike/Ped	O&M	130	130					130	
00262	Pleasanton	Pavement Rehabilitation Hacienda Business Park	4-East	STP/CMAQ	LSR	LSR	CON	1,095		1,095				1,095	
00263	Pleasanton	Stoneridge at I-680 Interchange improvements	4-East	2014 MBB	TEP-26	HWY	CON	5,200		5,200				5,200	
00316	Pleasanton	Citywide Trip Reduction Program	4-East	TFCA	Prog Mgr	Transit	O&M	80		80				80	
00144	Port of Oakland	Scoping: Airport Drive Overlay	1-North	2014 MBB	TEP-26	Multiple	Planning / Scoping	42	42					42	
00145	Port of Oakland	Scoping: Port Terminal Seismic Monitoring Program	1-North	2014 MBB	TEP-26	Freight	Planning / Scoping	7	7					7	
00146	Port of Oakland	Scoping: Port Area ITS Deployment	1-North	2014 MBB	TEP-27	Multiple	Planning / Scoping	22	22					22	
00147	Port of Oakland	Scoping: Middle Harbor Road Improvements	1-North	2014 MBB	TEP-27	Multiple	Planning / Scoping	22	22					22	
00148	Port of Oakland	Scoping: Port Terminal Lighting Upgrade	1-North	2014 MBB	TEP-27	Multiple	Planning / Scoping	6	6					6	

Alameda CTC Comprehensive Investment Plan Five-Year Programming and Two-Year Allocation Plan 2020 CIP Update								Programming and Allocations (\$ x 1,000)							
								Programme d Amount	Prior Allocations	Two-Year Allocation Plan		Future Programming			Total Allocated (Thru FY20-21)
									Prior Thru FY2018-19 (July 2018)	FY2019-20	FY2020-21	FY2021-22	FY2022-23	FY2023-24	
CIP ID	Sponsor	Project Title	PA	Fund Source	Fund Subset	Mode	Phase								
00149	Port of Oakland	Scoping: Outer Harbor Intermodal Terminal (OHIT) Phase 2	1-North	2014 MBB	TEP-27	Multiple	Planning / Scoping	50	50					50	
00150	Port of Oakland	Scoping: Airport Perimeter Dike	1-North	2014 MBB	TEP-27	Multiple	Planning / Scoping	30	30					30	
00151	Port of Oakland	Scoping: 7th Street Grade Separation East	1-North	2014 MBB	TEP-27	Multiple	Planning / Scoping	6	6					6	
00067	San Leandro	San Leandro Streets Rehabilitation	2-Central	2014 MBB	TEP-26	LSR	CON	30,000	16,000	7,000	7,000			30,000	
00096	San Leandro	San Leandro Boulevard Preservation	1-North	OBAG	STP	LSR	CON	804	804					804	
00170	San Leandro	San Leandro LINKS shuttle, FYs 15/16 and 16/17	2-Central	TFCA	Prog Mgr	Transit	Various	50	50					50	
00190	San Leandro	LINKS Shuttle (FY 17/18 - 18/19)	2-Central	TFCA	Prog Mgr	Transit	O&M	130	130					130	
00190	San Leandro	LINKS Shuttle Operations	2-Central	2014 MBB	TEP-45	Transit	O&M	1,020	420	200	200	200		820	
00264	San Leandro	E.14th St/Hesperian Blvd/150th Ave Intersection Improvements	2-Central	2014 MBB	TEP-26	LSR	CON	1,821				1,821			
00265	San Leandro	Washington Avenue Rehabilitation	2-Central	STP/CMAQ	LSR	LSR	PE/Env	73	73					73	
00265	San Leandro	Washington Avenue Rehabilitation	2-Central	STP/CMAQ	LSR	LSR	CON	975		975				975	
00030	SHS	Rides for Seniors	Multiple	2000 MB	Disc-PT	Paratransit	O&M	235	235					235	
00051	SJRRC	ACE Capital	Multiple	2000 MB	01	Transit	Various	13,184	13,184					13,184	
00031	SSPTV	Volunteer Assisted Senior Transportation Program	Multiple	2000 MB	Disc-PT	Paratransit	O&M	325	325					325	
00277	SSPTV	Volunteer Assisted Senior Transportation Program (FY 17/18 and FY 18/19)	Multiple	2014 MBB	TEP-12	Paratransit	O&M	210	210					210	
00297	SSPTV	Volunteers Assisting Seniors with Transportation (VAST)	4-East	2000 MB	Disc-PT	Paratransit	O&M	560		106	109	112	115	118	
00010	Union City	Operations Support for Route 2	3-South	Lifeline	STA	Transit	O&M	220	220					220	
00062	Union City	Union City Intermodal Station	3-South	2014 MBB	TEP-22	Transit	Planning / Scoping	51	51					51	
00191	Union City	Union City Boulevard Bike Lanes Phase 2	3-South	2014 MBB	TEP-44	Bike/Ped	PE/Env	5	5					5	
00191	Union City	Union City Boulevard Bike Lanes Phase 2	3-South	2014 MBB	TEP-44	Bike/Ped	Final Design (PS&E)	780	780					780	
00191	Union City	Union City Boulevard Bike Lanes Phase 2	3-South	2014 MBB	TEP-44	Bike/Ped	CON	5,779	5,779					5,779	
00191	Union City	Union City Boulevard Bike Lanes Phase 2	3-South	CMA-TIP	Other	Bike/Ped	CON	1,100	1,100					1,100	
00191	Union City	Union City Boulevard Bike Lanes Phase 2	3-South	TFCA	Prog Mgr	Bike/Ped	CON	136	136					136	

Alameda CTC Comprehensive Investment Plan Five-Year Programming and Two-Year Allocation Plan 2020 CIP Update								Programming and Allocations (\$ x 1,000)							
CIP ID	Sponsor	Project Title	PA	Fund Source	Fund Subset	Mode	Phase	Programmed Amount	Prior Allocations	Two-Year Allocation Plan		Future Programming			Total Allocated (Thru FY20-21)
									Prior Thru FY2018-19 (July 2018)	FY2019-20	FY2020-21	FY2021-22	FY2022-23	FY2023-24	
00266	Union City	Dyer Road Pavement Rehabilitation	3-South	STP/CMAQ	LSR	LSR	CON	872	872						872
00267	Union City	Bicycle and Pedestrian Master Plan Update	3-South	2000 MB	Disc-BP	Bike/Ped	Planning / Scoping	150	150						150
00317	Union City	Union City IDEA Grant Traffic Signal Control Improvement	4-East	TFCA	Prog Mgr	Transit	CON	221		221					221
00294	USOAC	Senior Public Transportation Training and Education Program	Multiple	2000 MB	Disc-PT	Paratransit	O&M	419		34	62	103	108	112	96
00281	Various	State Transportation Improvement Program	Multiple	STIP	RIP	HWY	Various	48,813	48,813						48,813
00282	Various	Lifeline Cycle 5 Program	Multiple	Lifeline	Various	Transit	Various	4,789	4,789						4,789
Totals								1,307,389	890,513	303,999	53,395	40,958	8,926	9,598	1,247,907

Total 2-year Allocations	\$ 357,394
Total 5-year Programming	\$ 416,876



Memorandum

5.2

1111 Broadway, Suite 800, Oakland, CA 94607 • 510.208.7400 • www.AlamedaCTC.org

DATE: April 30, 2020

TO: Alameda County Technical Advisory Committee

FROM: Carolyn Clevenger, Deputy Executive Director of Planning and Policy

SUBJECT: Update on COVID-19 Stimulus Efforts

Recommendation

This item is to provide Alameda County Technical Advisory Committee (ACTAC) with an update on potential COVID-19 stimulus efforts. This item also includes providing input on and approving a draft list of projects for advocacy for COVID-19 stimulus recovery activities. This item is for information only.

Summary

At the federal and state levels discussions are underway regarding potential stimulus efforts to support the COVID-19 recovery, and to address short-term transportation needs, particularly for transit operators. Alameda CTC has developed an initial list of projects and programs to consider for advocacy. As any specific legislation or new programs are developed staff will bring updates to ACTAC and the Commission and the list can be refined and updated as appropriate.

Federal Update

The federal government has thus far passed three stimulus bills in response to the COVID-19 pandemic. The Coronavirus Aid, Relief, and Economic Security (CARES) Act totals close to \$2 trillion, making it the largest spending package in American history. Specifically related to transportation, the CARES Act includes \$25 billion for Transit Infrastructure Grants. Funds provided in the bill should start to flow quickly, but there will be some variability in results in the weeks to come. In April, MTC programmed the first round of the CARES funding to transit operators throughout the region. This included critical funding for AC Transit, BART, LAVTA, ACE, Union City Transit and WETA as they continue to strive to deliver transit service to the public in these very difficult circumstances as follows:

Agency	Funding
BART	\$251,637,050
AC Transit	\$ 80,366,395
LAVTA	\$ 3,501,369
ACE	\$ 2,680,453
Union City Transit	\$ 922,560
WETA	\$ 12,529,212

The House and Senate are currently in recess, but discussions of a fourth stimulus package have already begun. Speaker Pelosi has noted that a fourth bill should focus on long-term economic recovery, including job creation and possibly infrastructure. Senate Appropriations Chairman Richard Shelby has also voiced support for an infrastructure package, signaling the possibility for a bipartisan deal. While Congress is in recess, federal agencies and departments will continue issuing guidance on the funding and provisions passed in the first three stimulus packages.

Stimulus Considerations

In preparation for a potential federal stimulus bill, or similar efforts at the state level to support recovery, infrastructure investment and jobs, Alameda CTC staff has begun to identify investments that could be good candidates for advocacy. The initial list is included as Attachment A. This list was developed based on a review of Alameda CTC-sponsored projects, projects included in Alameda CTC’s project list for advocacy for the FASTER Bay Area initiative, and a review of projects and programs submitted by all jurisdictions for the 2020 Countywide Transportation Plan.

Staff is seeking input from ACTAC on additional projects or priority initiatives they are pursuing as part of COVID-19 recovery efforts. An updated project list will be shared with PPLC at the May meeting, with additional updates anticipated by the Commission meeting. Projects or programs were identified based on project-readiness. As additional information is available regarding the policies and requirements for any potential infrastructure stimulus program, the list will likely be updated and refined.

Fiscal Impact: There is no fiscal impact. This is an information item only.

Attachment:

- A. Draft Projects and Programs for Stimulus Advocacy

Alameda CTC DRAFT List of Projects and Programs for Consideration for COVID-19 Stimulus
 Project list based on Alameda CTC FASTER Bay Area Advocacy List and 2020 Countywide Transportation Plan Project Submittals

Jurisdiction	Major Projects*	Mode	Project Description	Estimated Project Cost** (\$ Millions)	Project Funding Request (\$ Millions)	Readiness
Projects with construction start dates in 2020 or 2021 and ongoing programs.						
Operations						
Multiple/Countywide	Transit Operations (multiple)	Bus, Ferry, Rail	Funding for ongoing transit operations for all operators in the County. Specific funding needs and priorities will be identified based on discussions with transit operators and MTC.	TBD	TBD	In progress
Alameda CTC/Countywide	Transportation Demand Management and Carpool Incentives	Highway	Incentive program to encourage carpools and transportation demand management.	TBD	TBD	In progress
Programs						
Alameda CTC/Countywide	Affordable Student Transit Pass Program	Program	The program would cover expansion to all middle and high schools that have transit service within one quarter mile of the school and provide free bus passes on youth Clipper cards to all interested students in participating schools.	\$850	\$650	In progress
Alameda CTC/Countywide	Safe Routes to Schools	Program	The Program would fund expanded and enhanced implementation of Safe Routes to Schools at all K-12 public schools in Alameda County including education and infrastructure improvements to build a true network of Safe Routes to Schools.	\$1,100	\$750	In progress
Capital Projects Submitted to 2020 Countywide Transportation Plan - Construction Start in 2020 or 2021						
AC Transit	Fruitvale Ave. corridor--short term transit improvements	Transit	Install and operate an enhanced bus service with traffic signal priority and improved bus stops on Fruitvale Ave.	\$61		Planning/Scoping
AC Transit	Grand Ave. corridor transit improvements	Transit	Create a dedicated bus lane on Grand/West Grand for both local and Transbay buses	\$83		Planning/Scoping
AC Transit and City of Fremont	Fremont Citywide Transit Signal Priority	Transit	Upgrade traffic signals on major transit routes in the City of Fremont to provide improved Traffic Signal Priority for transit and emergency operations.	\$5		Planning/Scoping
AC Transit	Fremont and Newark Service Expansion	Transit	Reorganize and expand network of bus routes in Fremont and Newark designed to improve both service to passengers and efficiency.	\$6		Planning/Scoping
AC Transit	AC Transit Division 4 replacement--design, outreach and environmental	Transit	Execute preliminary phases of designing and implementing replacement for AC Transit yard Division 4	\$30		Planning/Scoping
Alameda CTC	I-80 Gilman Street Interchange Improvements	Highway	Reconfigure the I-80/Gilman interchange and add bicycle and pedestrian facilities.	\$62		PE/ENV
Alameda CTC	7th Street Grade Separation East	Goods Movement	Reconstruct the existing 7th St underpass on an adjacent alignment, rail tracks, and other rail infrastructure between I880 and Maritime St in the Port of Oakland. Provide bicycle facility.	\$283		Final Design PSE
Alameda CTC	GOPort FITS	Goods Movement	Traffic management and operations improvements through technology infrastructure serving the Port of Oakland.	\$34		Other
Alameda CTC	Rte 84 Widening, south of Ruby Hill Dr to I-680	Highway	Upgrade from 2-lane conventional highway to 4-lane expressway, make operational improvements to SR84/I-680 I/C and extend SB express lane about two miles to the north.	\$244		
City of Alameda	Clement Ave and Tilden Way Complete Streets	Complete Streets	Road diet along Tilden Way from Clement to Miller-Sweeney Bridge and on the extension of Clement Ave to Tilden Way.	\$15		Planning/Scoping
City of Alameda	Otis Drive Safety Improvements	Complete Streets	Road diet with bike lanes, center turn lane, bus stop upgrades, curb bulb-outs, marked crosswalks and a protected intersection.	\$1		Final Design PSE
City of Alameda	Water Shuttle Operations	Transit	Construct/upgrade docks to support vessels, purchase vessels, and operate peak commute hour water shuttle Mon-Fri at 15-30 minutes headways.	\$2		Planning/Scoping
Alameda County	Estuary Bridges Maintenance and Repairs	Local Road	Maintain and operate High Street, Park Street, and Miller Sweeney (Fruitvale) bridges. This represents 10 years of maintenance expenses			O&M
Alameda County	East Lewelling Boulevard Streetscape Improvements- Phase II	Complete Streets	Widen sidewalks, bicycle lanes , median islands, curb, gutters, drainage and other improvements	\$10		Final Design PSE
City of Albany	San Pablo Complete Streets	Complete Streets	Complete Streets Bicycle & Pedestrian improvement projects along the San Pablo Ave corridor.	\$5		PE/ENV

Jurisdiction	Major Projects*	Mode	Project Description	Estimated Project Cost** (\$ Millions)	Project Funding Request (\$ Millions)	Readiness
BART	19th Street Bike Station Plaza	Transit Access	Construct bike station to support active access to 19th St. BART.	\$6		Final Design PSE
BART	West Oakland TOD	Transit Access	Improve access to/from the West Oakland BART Station to support TOD.	\$30		PE/ENV
BART	Dublin/Pleasanton Active Access Improvements	Transit Access	Improve bicycle and pedestrian access to the Dublin/Pleasanton BART station.	\$16		Final Design PSE
BART	North Berkeley Active Access Improvements	Transit Access	Improve bicycle and pedestrian access to the North Berkeley BART station.	\$13		Final Design PSE
City of Berkeley	9th Street Bicycle Boulevard Pathway Extension Phase II	Bike/ped	Construct a new pathway segment connecting Ninth St in front of Berkeley Bowl West to the Emeryville Greenway.	\$2		Final Design PSE
City of Berkeley	Milvia Bikeway Project	Bike/ped	Constructs Class IV protected bikeways on Milvia St between Hearst Ave and Blake St. Includes pedestrian crossing improvements.	\$3		PE/ENV
City of Berkeley	Railroad Quiet Zone Multimodal Safety Project	Goods Movement	Safety improvements to each of the 7 at-grade railroad crossings in West Berkeley.	\$11		PE/ENV
Dublin/Alameda CTC	Dublin Blvd. - North Canyons Pkwy Extension	Local Road	Dublin Blvd-North Canyons Parkway from Fallon Rd to Croak Rd: Construct six lane extension; Dublin Blvd-North Canyons Parkway from Croak Rd to Doolan Rd: Construct four lane extension	\$164		PE/ENV
Dublin	Tassajara Road Widening from N. Dublin Ranch Drive to City Limit	Local Road	Widen Tassajara Road from existing 2 lanes to 4 lanes between N/ Dublin Ranch Drive to City limit with C C County; signal upgrades, new bike lanes, improved bus stops, sidewalks.	\$23		PE/ENV
Dublin	Downtown Dublin PDA Bike and Ped Plan Implementation	Bike/ped	Implementation of projects and programs as outlined in the City of Dublin's Bicycle and Pedestrian Master Plan.	\$22		Planning/Scoping
Dublin	Technology Enhancements to connect arterials with freeways for Connected and autonomous vehicles	Local Road	Provide Connectivity for Transit and vehicles between local arterials and regional facilities; first and last mile connectivity at key transit hubs and along major transit routes	\$20		Planning/Scoping
Dublin	SR25 Improvements	Bike/ped	Implement SR25 improvements inside school zones in Dublin to implement site assessment recommendations.	\$7		Planning/Scoping
Dublin	Downtown Dublin Streetscape Plan Implementation	Local Road	Implement Downtown Dublin Specific Plan area improvements to enhance the public and private investments in the Dublin Downtown PDA	\$40		Planning/Scoping
Dublin	Iron Horse Trail Crossing (old SPRR ROW) at Dublin Boulevard	Bike/ped	Construct a bridge crossing for Iron Horse Trail at Dublin Boulevard.	\$10		Final Design PSE
Emeryville	Powell Transbay Bus I-80 Ramp/Bus Stop	Transit	Improve bus access onto the freeway at Powell St/ I-80 Westbound on-ramp	\$4		Planning/Scoping
Emeryville	Quiet Zone Safety Engineering Measures	Goods Movement	Install four quadrant gates, raised medians, sidewalks, and other Supplemental Safety Measures (SSM's) at three at-grade railroad crossings on 65th Street, 66th Street, and 67th Street	\$7		Final Design PSE
Fremont	Fremont Boulevard & Thornton Avenue Complete Streets in Centerville PDA, (Part of former SR 84)	Complete Streets	Construct complete streets/streetscape features along Fremont Boulevard from Alder Avenue to Eggers Drive, Thornton from I880 to Fremont Boulevard and Peralta Avenue from Fremont Boulevard to Sequoia Road.	\$9		PE/ENV
Fremont	Relinquished State Route 84: State of Good Repair Improvements on Thornton Avenue, Fremont Boulevard and Peralta to Sequoia	Local Road	Pavement rehabilitation to address deferred maintenance.	\$5		PE/ENV
Fremont	UPRR Quiet Zone: Niles/Nursery	Goods Movement	Construct supplemental safety improvements (SSMs) at the Nursery Avenue at-grade crossing	\$3		Final Design PSE
Fremont	East Bay Greenway Trail (Reach 6): Innovation District to Bay Trail w/ new I-880 Bridge	Bike/ped	1.2 miles of multi-use trail through Fremont's Innovation Business District to the SF Regional Bay Trail.	\$62		PE/ENV
Fremont	Decoto Road Complete Street: I-880 to Paseo Padre Parkway	Complete Streets	Expands and enhances transit (bus) access along Decoto Road and implements complete street features that provide protected bicycle and sidewalk facilities	\$20		Final Design PSE
Fremont	Mission Creek Trail Gap Closure: Palm Avenue to Mission Boulevard	Bike/ped	Extend an existing multi-use path by nearly 2,200 feet to complete the connection between Palm Ave and Mission Boulevard and implement a pedestrian bridge	\$4		PE/ENV
Fremont	Grimmer Greenway Trail: Central Park to Fremont Boulevard	Bike/ped	New Class I trail segment along the ACFC flood control channel north side of Grimmer Boulevard between Fremont Boulevard and Paseo Padre Parkway/Central Park.	\$6		Final Design PSE
City of Hayward	Main Street Complete Street Project	Complete Streets	Reduce the roadway from four to two lanes and improve pedestrian facilities and add bicycle lanes in the Downtown Hayward Priority Development Area.	\$5		PE/ENV
City of Hayward	Mission Blvd Phases 2 and 3 Improvements	Complete Streets	Complete street and safety improvements for 1.5 mile segment of Mission Boulevard between Industrial Parkway and the Hayward/Union City boundary.	\$33		CON

Jurisdiction	Major Projects*	Mode	Project Description	Estimated Project Cost** (\$ Millions)	Project Funding Request (\$ Millions)	Readiness
City of Hayward	Mission Blvd Phases 2 and 3 Improvements	Complete Streets	Complete streets and safety improvements for 0.5 mile segment of Mission Boulevard between A Street and the Hayward/County of Alameda boundary at Rose Street.	\$18		Final Design PSE
City of Livermore	Livermore Iron Horse Trail	Bike/ped	Class 1 inter-regional Iron Horse Trail within and through the City of Livermore.	\$20		Planning/Scoping
Newark	Central Avenue Overpass	Complete Streets	Grade separation structure over the Union Pacific Railroad tracks on Central Avenue from east of Sycamore Street to Morton Avenue and addition of bicycle lanes and sidewalks.	\$35		Final Design PSE
City of Oakland	42nd Ave. & High St. I-880 Access Improv.	Local Road	Widening and re-alignment of local streets including modified traffic signals and intersection improvements in the vicinity of the I-880/42nd & High interchange.	\$18		Final Design PSE
City of Oakland	Oakland: Telegraph Ave Bike/Ped Imps and Road Diet	Bike/ped	Road diet and complete streets improvements on Telegraph between 29th and 45th Streets.	\$1		CON
City of Oakland	Oakland: Telegraph Avenue Complete Streets	Complete Streets	Complete street improvements on Telegraph Avenue between 20th Street and 42nd Street.	\$5		Final Design PSE
City of Oakland	Oakland Fruitvale Ave Bike/Ped Imprvmnts H8-04-014	Bike/ped	Road diet and complete streets improvements on Fruitvale Ave from E 10th St to E 23th St.	\$1		Final Design PSE
City of Oakland	14th Street Safe Routes in the City	Complete Streets	Road diet and complete streets improvements on 14th Street between Brush Street and Oak Street.	\$14		Planning/Scoping
City of Oakland	Adeline Street Road Diet	Bike/ped	Road Diet on Adeline Street between 3rd and 7th Streets, incorporating class 2 bike lanes on both sides of street, includes pavement rehabilitation	\$0		Final Design PSE
City of Oakland	73rd Avenue Road Diet	Bike/ped	Road Diet on 73rd Avenue between Bancroft Ave and MacArthur Blvd, incorporating class 2 bike lanes on both sides of street, striping only	\$0		Planning/Scoping
City of Oakland	Lower Park Blvd Road Diet	Bike/ped	Road Diet on Park Blvd between 18th and MacArthur Blvd, incorporating class 2 bike lanes on both sides of the street	\$3		Final Design PSE
City of Oakland	14th Avenue Streetscape Project	Bike/ped	Road diet and active transportation improvements on 14th Avenue.	\$7		Final Design PSE
City of Oakland	19th Street BART to Lake Merritt Urban Greenway	Complete Streets	Complete streets improvements on 20th Street (Thomas L. Berkeley Way) between Broadway and Harrison Street in the City of Oakland.	\$6		Final Design PSE
City of Oakland	Fruitvale Alive Gap Closure Streetscape Project	Bike/ped	The Fruitvale Avenue Gap Closure project will install Class 4 cycle tracks and safety improvements between Alameda Avenue and E.12th Street along Fruitvale Avenue.	\$9		Design
City of Oakland	East Oakland Community Based Transportation Plan Area Projects	Misc.	Implementation of pedestrian, bicycle and transit improvements, including transit operations improvements, neighborhood and library shuttles in the East Oakland Community Based Transportation Plan Area	\$25		Planning/Scoping
City of Oakland	Howard Terminal Railroad Grade Separation Project for Vehicles and for Pedestrians/Bikes	Local Road	Vehicular grade separation at Market or Brush Street and a pedestrian/bicycle bridge at Jefferson or Clay Streets across the railroad tracks in the Jack London District near the proposed Howard Terminal ballpark.	\$298		PE/ENV
City of Oakland	MacArthur Smart City Corridor Project	Local Road	ITS facilities along the MacArthur corridor between 90th Avenue and Lake Merritt, signal upgrades and other street improvements.	\$13		PE/ENV
BART/City of Oakland	Lake Merritt BART Station Area Improvements	Transit Access	Infrastructure to support the community and transportation hub at the Lake Merritt BART Station, including complete streets, access and safety improvements.	\$60		PE/ENV
City of Oakland	West Oakland, Howard Terminal, Jack London District, Downtown Oakland Connectivity Project	Local Road	Roadway safety, multimodal and streetscape improvements connecting West Oakland, Howard Terminal, Jack London District, and Downtown.	\$175		PE/ENV
City of Oakland	Railroad At-Grade Corridor Safety Project through Jack London District	Goods Movement	At-grade railroad crossing improvements at Market, Martin Luther King Jr, Way, Clay, Washington, Broadway, Franklin, Webster and Oak Streets.	\$18		PE/ENV
City of Oakland	Gondola Project Phase 1 Washington Street	Other	An Urban Gondola connecting downtown Oakland 12th Street BART and Jack London Square.	\$350		Planning/Scoping
City of Oakland	Downtown Oakland Specific Plan (DOSP) Mobility Implementation Projects	Local Road	Implementation of transportation improvements identified in the DOSP include bike and ped safety improvements, transit improvements, and traffic signal technology.	\$60		Planning/Scoping
City of Pleasanton	West Las Positas Bike Corridor Improvements	Bike/ped	Creates a continuous east-west bikeway with access to employment centers, schools and neighborhoods.	\$13		Planning/Scoping
Port of Oakland	Seaport Near Dock Rail Enhancements	Goods Movement	Construction of the Seaport Near Dock Rail Enhancements.	\$8		Planning/Scoping
Port of Oakland	"Big Ship Ready" Marine Terminal Modernization	Goods Movement	"Big Ship Ready" infrastructure improvements including: bollard and fenders, shore power outlets, and LED lighting upgrades and berth capacity enhancements.	\$74		Planning/Scoping

Jurisdiction	Major Projects*	Mode	Project Description	Estimated Project Cost** (\$ Millions)	Project Funding Request (\$ Millions)	Readiness
Port of Oakland	Port Operational Efficiency Enhancements	Goods Movement	Infrastructure improvements at Maritime Street, Grand Avenue & Adeline Street access points to Seaport facilities to enhance operational efficiency.	\$25		Planning/Scoping
Port of Oakland	Roundhouse EV Charging Facility	Goods Movement	Development of freight electric vehicle charging standards and design & construction of infrastructure necessary to establish a permanent electric vehicle/equipment charging facility at the Seaport's Roundhouse Property.	\$12		Planning/Scoping
Port of Oakland	Airport Drive Rehabilitation	Local Road	Roadway rehab and reconstruction of airport access roads.	\$9		Final Design PSE
San Leandro	San Leandro Street Circulation and Capacity Improvements	Local Road	Series of circulation and intersection improvements on local street network.	\$17		Planning/Scoping
San Leandro	Traffic Signal Modernization	Local Road	Modernization of the City's 63 traffic signals	\$4		Planning/Scoping
San Leandro	Railroad Crossing Upgrades - Near Term Safety Enhancements	Goods Movement	Construct near term safety enhancements at all at-grade rail crossings in San Leandro.	\$3		Planning/Scoping
San Leandro	BART Gap Closure & Safety Improvement	Transit Access	Pedestrian and bicycle improvements at the San Leandro BART station.	\$5		Planning/Scoping
San Leandro	Downtown TOD Pedestrian Lighting & Streetscape	Other	Improve lighting in downtown San Leandro and MTC's Downtown Transit Oriented Development PDA.	\$6		Planning/Scoping
San Leandro	E. 14th St./Hesperian Bl./150th Av Intersection Improvements	Local Road	Lane reconfiguration, road widening, signal modifications, and curb ramp installations at the intersection of E. 14th St / Hesperian Blvd / 150th Avenue to support adopted Bay Fair TOD plan.	\$8		Final Design PSE
San Leandro	MacArthur Blvd Roundabout, Streetscape, and Park & Ride	Local Road	Construction of a roundabout and streetscape at the intersection of MacArthur Boulevard, Superior Avenue, Foothill Boulevard, and the I-580 off-ramp. C	\$4		Planning/Scoping
San Leandro	Local Street Rehabilitation and Complete Streets Implementation	Local Road	Local street rehabilitation and implementation of complete streets enhancement on local streets	\$165		Planning/Scoping
WETA	South San Francisco Frequency Increase	Transit	Enhances the existing South San Francisco ferry service to 30-minute peak period frequencies.	\$20		Planning/Scoping
			Near-term Construction Projects	\$2,874		
Alameda CTC FASTER Bay Area List: Project Development Phases - Construction Start After 2020 or 2021						
Bus, Bike and Pedestrian Improvements						
	AC Transit Bus Facilities Modernization and Expansion to Support Transbay and Major Corridors service (submitted by AC Transit)	Bus Facilities Modernization	Rehabilitation and expansion of AC Transit Bus Operating Divisions to accommodate future operating needs, including express bus and Transbay service expansion.	\$1,900	\$1,900	Planning
	E14th/Mission and Fremont Blvd Corridor Project	Transit and Bike/ped expansion	Transit priority treatments and rapid bus improvements on 30-mile priority development area corridors on E14th, Mission and Fremont Blvd corridor, including major service increases, bicycle network investments and pedestrian safety improvements. Near-term pilot projects to be identified.	\$600	\$600	Planning
	San Pablo Avenue Corridor Project	Transit and Bike/ped expansion	Transit priority treatments and rapid bus improvements on priority development area corridor on San Pablo Avenue, including major transit service increases, bicycle network investments and pedestrian safety improvements. Near-term pilot projects to be identified.	\$600	\$600	Planning
	Bicycle and Pedestrian Improvement Projects: The proposed improvements include construction of major bicycle and pedestrian trails, bicycle and pedestrian safety projects, and first/last mile connections to transit.	Major Trails, Bike Ped improvements	Major bicycle and pedestrian trails include: San Francisco Bay Trail, East Bay Greenway, Iron Horse Trail, Niles Canyon Trail, Sabercat Trail, Regional Connectivity and Gap Closure Trails. Bicycle and pedestrian safety improvements on major corridors and providing first and last mile connections to transit.	\$2,500	\$1,500	Varies
Clean Fleets (Capital)						
	Zero Emission Fleet Conversion (multiple)	Transit	Transit capital needs to meet CARB 2018 Innovative Clean Transit Rule for 100% Zero Emission buses by 2040, electrify Valley Link, and ferry fleet conversion and facility upgrades	\$4,350	\$2,500	Planning
	Clean Truck Fleet Conversion	Goods Movement	Funding to support zero and near-zero emission trucks in Alameda County.	\$6	\$700	In progress

Jurisdiction	Major Projects*	Mode	Project Description	Estimated Project Cost** (\$ Millions)	Project Funding Request (\$ Millions)	Readiness
Express Lanes and Express Bus						
	I-580 and I-680 Corridors Express Lane Improvements and Express Bus Program: The Project would implement a series of highway and express lane projects along the I-580 and I-680 corridors in Alameda County including complementary express bus services.	Express Lanes and Express Bus	I-580 and I-680 Express Lane Network: completion of Express Lanes on major corridors in Alameda County, including I-580 from the Bay Bridge to the existing Express Lanes, and I-680 from the Contra Costa to Santa Clara county lines.	\$4,200	\$3,000	Varies
	Express Lanes Direct Connectors: SR 262 and I-580/I-680 Interchange	Express Lanes and Express Bus	Express Lane to Express Lane Direct Connectors (I-580/I-680 Interchange and State Route 262 Cross Connector connecting I-680 to I-880)	\$2,400	\$2,375	Varies
	Regional Express Bus and Transbay Bus Program: Priority treatments and capital support needed for Transbay buses and regional express bus services.	Express Lanes and Express Bus	Countywide Express Bus Network and Transbay Bus service: rapid express bus network utilizing the countywide express lane network including Transbay services and priority treatments across the Bay Bridge.	\$1,000	\$1,000	Planning
Ferry						
	WETA System Enhancement and Expansion (submitted by WETA)	Ferry service expansion	Expand service on existing WETA network to reach 15- and 30-minute frequency throughout the day (operating costs below under transit operations). Add up to six new terminals in underserved areas of San Francisco Bay. Alameda County portion includes two new terminals: Berkeley and Seaplane Lagoon. Consider future service expansion to new destinations including the North Bay and additional east bay terminals.	\$1,500	\$500	Planning
Rail						
	Altamont Corridor Vision Phase 1	Major Rail Extension	Major rail extension and improvements in the Altamont Corridor, including Valley Link rail extension, ACE Station and Equipment Improvements and new tunnel/aerial structure to get trains to 125mph (Alameda County elements only)	\$3,300	\$3,300	Environmental
	Dumbarton Rail Project	Major Rail Extension	Major megaregional rail connection between the East Bay and the Peninsula across the Dumbarton Bridge	\$3,900	\$2,000	Environmental
	Irvington BART Station	Transit	Infill BART Station in the City of Fremont	\$250	\$80	Design
	BART Core Capacity	Transit	Control System, Hayward Maintenance Complex II, traction power upgrades, and new Fleet. Assume 1/4 county share.	\$4,500	\$1,125	Planning and environmental
	Alameda County Rail Strategy: The Alameda County Rail Strategy is a program of projects that would advance a more efficient and resilient freight and intercity rail system in Alameda County	Port Rail	GO Port: Multimodal improvements and technology investments at the Port of Oakland.	\$620	\$350	Final Design
		Transit	Capitol Corridor Improvements	\$250	\$100	Environmental
		Transit	Rail Safety and Connectivity: grade crossing safety improvements and rail improvements connecting passenger rail operators, including addressing stations, in Southern Alameda County	\$1,000	\$750	Varies

This page intentionally left blank



DATE: May 4, 2020

TO: Alameda County Technical Advisory Committee

FROM: Kate Lefkowitz, Associate Transportation Planner
Kristen Villanueva, Senior Transportation Planner

SUBJECT: 2020 Countywide Transportation Plan: Community-Based Transportation Plan Update

Recommendation

This item provides the Commission with an update on the Community-Based Transportation Plan (CBTP) effort that is part of the 2020 Countywide Transportation Plan (CTP). The update covers baseline conditions analysis and focused outreach conducted in Alameda County's low-income and minority communities, as defined by the Metropolitan Transportation Commission's (MTC) Communities of Concern (CoC). This informs the 2020 CTP and fulfills MTC requirements to update Alameda County's CBTPs. This item is for information only.

Summary

The CBTP program was launched in 2002 by MTC to develop strategies to improve access and mobility for low-income communities for both commute and non-commute trips. To determine where CBTPs would be conducted, MTC identified CoCs throughout the region, which are census tracts with high concentrations of disadvantaged populations¹. Community engagement is a key component and requirement of CBTP development and informs analysis and recommendations.

The last set of CBTPs was completed between 2004 and 2009 for Alameda County's CoCs, which at the time consisted of five communities in the North and Central planning areas. Since then, MTC's definition of CoCs has evolved to better capture concentrations of low-income, minority communities using the most recent census

¹ MTC has defined CoCs as census tracts that have at least 30% of residents that are low-income and that have either ≥ 70% minority population or three or more of the following: Limited English Proficiency (12% threshold); Population over 75 (10% threshold); Zero -vehicle households (10% threshold); Single-parent households (20% threshold); Disabled population (12% threshold); Rent-burdened households (15% threshold).

data, and demographic shifts and growth have occurred throughout the county. MTC approved the current CoC definitions and boundaries in 2018.

This CBTP update will be integrated into and formalized as part of the 2020 CTP. Analysis is presented for groups of CoCs, as detailed below, which are called CBTP study areas. The CBTP effort included public outreach in all CBTP study areas, analysis of baseline conditions for these areas, and discussions with jurisdictions that have recently conducted extensive outreach and planning work within these communities.

This memo presents a summary of findings about transportation needs for the CBTP study areas and recommendations for incorporation into the 2020 CTP. The CBTP outreach and analysis supplements broader countywide analysis and outreach underway for the CTP and provides key input into project and program prioritization and strategy development. Incorporating the CBTP findings elevates feedback from disadvantaged communities and ensures the needs of these populations are adequately reflected in the CTP.

Background

MTC's CBTP Program

MTC launched the CBTP program in 2002. Its goal is twofold: to improve access and mobility for disadvantaged communities (for commute as well as non-commute trips) and to engage residents and community organizations in the process. The CBTP program historically provided input to Lifeline Program spending allocations, specifically for transportation projects that address mobility and accessibility needs in low-income communities, although in recent cycles the funding is primarily used specifically for transit operations and the direct link to CBTPs has lessened.

Since the beginning of the CBTP program, MTC has defined the disadvantaged communities that are considered CoCs. MTC periodically updates the criteria used to determine which areas are considered CoCs and uses the latest demographic data from the U.S. Census to update the CoC boundaries as part of updating the regional transportation plan. Since Plan Bay Area (2013) MTC has defined CoCs as census tracts that have at least 30% of residents that are low-income and that have either $\geq 70\%$ minority population or three or more of the following:

1. Limited English Proficiency (12% threshold)
2. Population over 75 (10% threshold)
3. Zero -vehicle households (10% threshold)
4. Single-parent households (20% threshold)
5. Disabled population (12% threshold)
6. Rent-burdened² households (15% threshold)

² Rent-burdened is defined as paying more than 30% of household income on rent.

In spring 2018, MTC updated its CoC boundaries with American Community Survey (ACS) 2012-2016 5-year data. This recent demographic data changed the spatial distribution of CoCs within Alameda County compared to CBTPs that were developed over ten years ago. Alameda County now contains 115 census tracts that meet the CoC criteria, located in nine cities and three unincorporated areas across all four planning areas of Alameda County. This map is included in Attachment A. Approximately 85% of these census tracts qualify as CoCs based on the low-income and minority criteria alone.

Alameda County CBTP Study Areas

Alameda CTC has grouped CoC census tracts into CBTP study areas that align with Alameda County Planning Area boundaries and jurisdictional boundaries to guide this effort. For the most part, each CBTP study area is a small section of a jurisdiction, however for cities with a large number of CoC census tracts, multiple CBTP study areas were designated. The CBTP study areas are shown in Table 1.

Table 1 CBTP Study Areas by Jurisdiction

Planning Area	CBTP Study Area	
North County	<ul style="list-style-type: none"> • Alameda • Albany • Berkeley: Central, South and West 	<ul style="list-style-type: none"> • Oakland: North, West, Central and East
Central County	<ul style="list-style-type: none"> • Unincorporated: Ashland, Cherryland and Castro Valley 	<ul style="list-style-type: none"> • San Leandro • Hayward
South County	<ul style="list-style-type: none"> • Union City 	<ul style="list-style-type: none"> • Newark
East County	<ul style="list-style-type: none"> • Livermore 	

2020 CBTP Approach

The 2020 CBTP process sought to understand current transportation needs in CoCs, meet MTC's requirements for the CBTP program, and provide input into the 2020 CTP. The CBTP outreach and analysis supplements broader countywide analysis for the CTP and provides key input into project and program selection and strategy development. Incorporating the CBTP findings elevates feedback from disadvantaged communities, which are traditionally harder to reach through conventional outreach, in the broader planning context for Alameda County.

Developing the 2020 CBTP involved the following three key efforts:

- **Baseline Conditions.** Analysis of baseline conditions to understand the current transportation characteristics of the CBTP study areas. Data analysis included: demographic data, commute patterns for residents and workers, and a summary of baseline conditions of the transportation network like pavement condition, the High-injury Network for walking and biking, and presence of active transportation infrastructure, among other metrics.

- **Analysis of Past Planning Efforts.** Synthesis of recent planning and outreach activities that have been conducted in the CBTP Study Areas. Attachment B lists the plans reviewed for the 2020 CBTP update.
- **Community Engagement.** Substantial outreach to gain an understanding of issues and needs directly from the communities. This consisted of a countywide poll conducted in 2019 that was presented to Commissioners at the May retreat, intercept surveys at pop up events within CBTP study areas, and interviews with community-based organizations. Attachment C provides a summary of outreach conducted. Due to the large number of CoCs in the City of Oakland, a modified approach was used for these CBTP study areas. See detail in Attachment C for this approach.

Key Findings from the 2020 CBTP update

Based on analysis of baseline conditions, review of past planning efforts, and outreach conducted for the CBTP, the following overarching transportation needs have been identified across all CoC's in the county's planning areas:

Safe Biking and Walking. There is a need for safer walking and biking facilities. Particular concern has been raised about safely crossing roadways with high traffic volumes and high traffic speeds, indicating a need for safer crosswalks.

Pedestrian Quality and Safety There is a need for improved pedestrian infrastructure and amenities including completion of sidewalks and more street lighting to deter crime and facilitate pedestrian safety at night.

Affordable Transit Fares. Introducing affordable transportation options is noted as a key concern for residents in CoCs.

Better Access to Transit. There is a need to expand the frequent transit network to provide options for off-peak commuters and increase the frequency of transit in CoCs. Additional needs include safer access to transit stops and stations. Outside of the North planning area, improved access to reliable and frequent transit has been raised as a significant need. The major high frequent bus lines and rail stations are concentrated in North County, leaving potential transit dependent populations with limited options elsewhere in the county.

Pavement Quality in CBTP study areas. There is a need to improve pavement condition in CBTP study areas.

Detailed findings from baseline conditions, analysis of past planning efforts, and community engagement are found in Tables 2 and 3. Table 2 summarizes key findings that have emerged countywide. Table 3 provides additional context for the specific needs within each jurisdiction as provided during community engagement. Note that the findings in Table 3 are in addition to the findings and issues presented in Table 2.

Table 2 Summary of High-Level Findings of CBTP Study Areas Countywide

Mode/Issue Area	Key Findings
Safety	<ul style="list-style-type: none"> Residents in CBTP study areas feel less safe walking, waiting for transit, and biking CBTP study areas have more miles of <u>Auto</u> High Injury Network than non-CBTP study areas in the county
Commute Patterns	<ul style="list-style-type: none"> The number of off-peak commuters within CBTP study areas have increased at a higher rate than non-CBTP study areas since 2010
Transit	<ul style="list-style-type: none"> Residents in CBTP study areas use transit more frequently Concerns around transit affordability Concerns around transit frequency Support for improvements to transit amenities: bus shelters and stops
Active Transportation	<ul style="list-style-type: none"> Support for improved infrastructure for active transportation such as high-quality bike lanes, trails that are separate from roads, bike parking
Driving and Pavement Condition	<ul style="list-style-type: none"> Residents indicate long driving travel times and high costs of driving due to traffic and long distances CBTP study areas are twice as likely to be home to "at-risk" pavement conditions as non-CBTP study areas in the county Improving potholes and roads is a top priority for residents in CBTP study areas

Table 3 Specific Outreach Findings for Each Jurisdiction with a CBTP Study Area

Jurisdiction	Key Findings from Community Engagement
Alameda	<ul style="list-style-type: none"> Concern around transit amenities: better bus shelters and apps for smartphones, more weekend/night service Concern for pedestrian safety due to driving behaviors
Albany	<ul style="list-style-type: none"> Support for infrastructure improvements to connect residents to businesses, schools, and recreational facilities across within and near the CoC Concerns around pavement quality for biking, lack of bike lanes Concerns around traffic, travel time, and lack of affordable parking
Berkeley: Central, South and West	<ul style="list-style-type: none"> Concern around community displacement, as well as concerns for retaining existing industries Concerns around safety, affordability and cleanliness on BART A desire for more reliable bus service on nights/weekends, more frequent weekday service

Jurisdiction	Key Findings from Community Engagement
Oakland: North, Central, East and West	<ul style="list-style-type: none"> • Focus on active transportation education programming for youth • Existing pavement in poor condition • Concern around pedestrian safety due to vehicular speed and lack of sidewalks • Significant local air pollution exposure and health impacts, particularly in West Oakland • Socioeconomic, cultural, and discriminatory barriers faced by people of color to access bicycling and public spaces more generally.
Unincorporated: Ashland, Cherryland, and Castro Valley	<ul style="list-style-type: none"> • Pedestrian safety, including: safer crossings, traffic calming, and better sidewalks • A desire for more frequent daytime bus service, nighttime/weekend service, and higher reliability
Hayward	<ul style="list-style-type: none"> • Interchanges along I-880 identified as notable barriers for walking and cycling • Concern for safe and accessible walking facilities • Need for more daytime/weekend/night bus service and affordable fares.
San Leandro	<ul style="list-style-type: none"> • Improve automobile and pedestrian safety outcomes on multimodal corridor • Identify strategies to improve sidewalk conditions, lighting, and bicycle infrastructure • A desire for more daytime bus and night/weekend service, fewer/shorter transfers
Newark	<ul style="list-style-type: none"> • Interest in investments in active transportation infrastructure • Concerns around accessing BART, cleanliness, free transfers to/from bus, more parking at stations, more night/weekend service. • Need for more night/weekend bus service, more daytime service, accessible vans/paratransit
Union City	<ul style="list-style-type: none"> • Interest in investments in active transportation infrastructure • Better access to transit • Transit options are not close to destinations, more frequent daytime/night/weekend service is needed • Concerns around safety and walking. Fast traffic, fear for personal safety, crime, better walking facilities are needed
Livermore	<ul style="list-style-type: none"> • Need for improvements to pedestrian crossings, better walking and biking facilities that are separate from road. • Concerns over high traffic speeds • Interest in better access to transit

Integration with 2020 CTP

Many of these needs are consistent with needs already identified in the 2020 CTP and the 2020 CTP will further incorporate these CBTP needs as the document is finalized in coming months. There are several specific ways that the CTP already reflects CBTP needs, most notably within the projects that will be included within a prioritized list of near-term projects and overarching strategies that the CTP will include. Projects and

strategies will be the two key discussion topics during discussions with small groups of Commissioners in May 2020.

The project screening criteria included CoCs as one of the key criteria to select projects for the 10-year priority project list. Many projects that have been submitted directly respond to CBTP needs and Alameda CTC will continue to support cities to develop projects that respond to needs in CBTP study areas. For example, Alameda CTC and many cities are working on multimodal corridor projects which travel through CBTP study areas and directly address many of the needs highlighted through the outreach. In addition, Alameda CTC's ongoing programs address CoC needs, including the Access Safe Routes Program, the expansion of the Student Transit Pass Program, and the Paratransit Program.

The CTP will also include a set of strategies that are currently under development. Several of the strategies under consideration respond directly to CBTP needs, including:

- Build out the Near-Term All Ages and Abilities Walk and Biking Network
- Pilot Fare-Free Zones and Passes
- Provide Safe and Secure Access to Bus Stops
- Explore Funding Strategies to Support Increased Transit Operations
- Identify strategies to address spill over traffic in CoC communities
- Expand Safe Routes to School and Safety Education Programs
- Reduce the Countywide Impacts of Infrastructural Barriers
- Reduce Impacts of Goods Movement, including emissions, safety and truck activity impacts

Next Steps

The CBTP report document will be finalized in early summer and released with the 2020 CTP. Staff are meeting with Commissioners in small Planning Area groups in May 2020 to discuss CTP and CBTP strategies and priority projects. Alameda CTC will monitor progress towards implementing CBTP recommendations, per MTC requirements, and update needs periodically in coordination with future CTP updates.

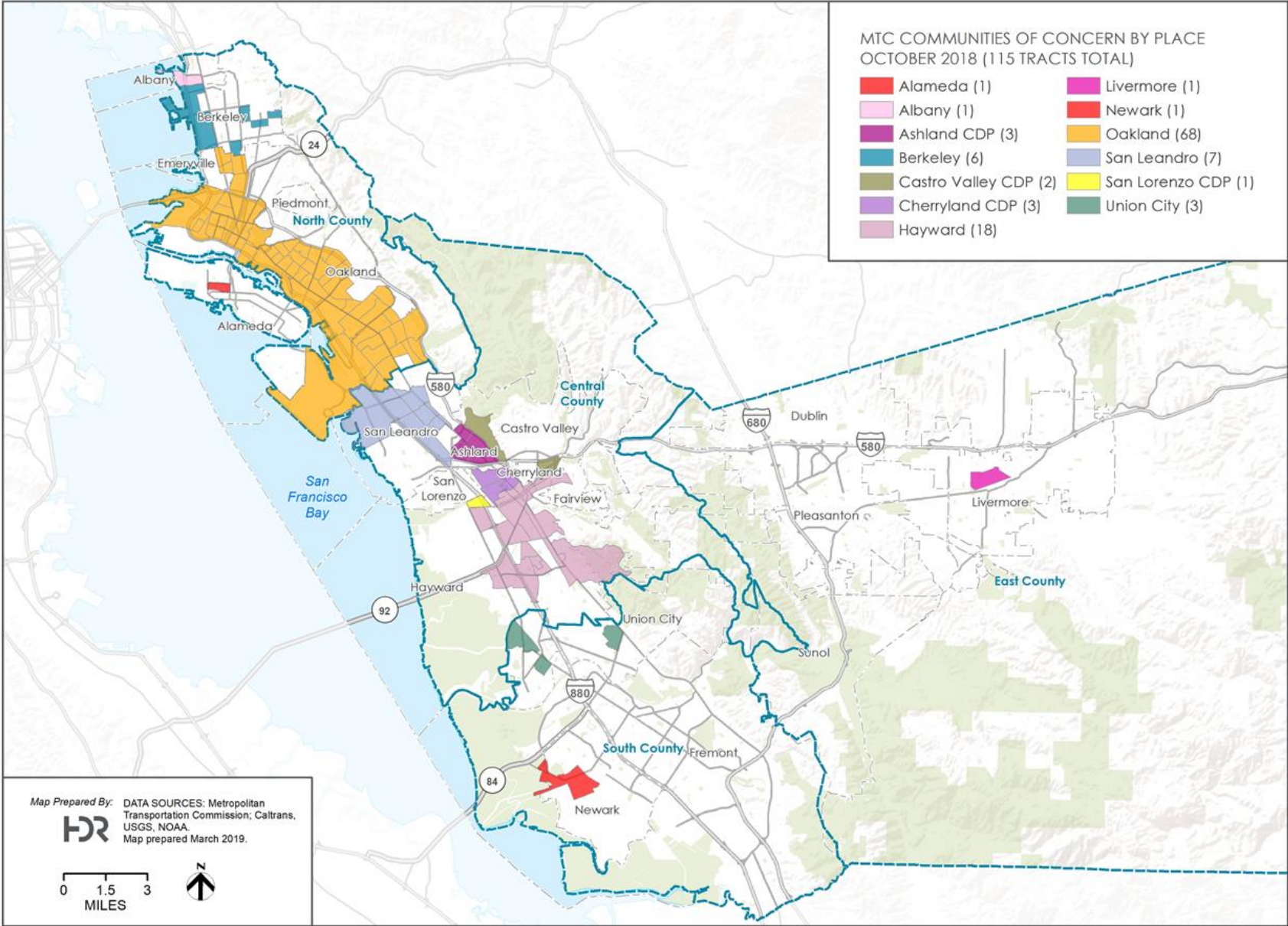
Fiscal Impact: There is no fiscal impact for this item.

Attachments:

- A. Alameda County Communities of Concern
- B. Recent Plans and Outreach in CBTP Study Areas by Jurisdiction/Agency
- C. Outreach Summary for CBTP

This page intentionally left blank

Attachment A – Alameda County Communities of Concern



This page intentionally left blank

Attachment B Recent Plans and Outreach in CBTP Study Areas by Jurisdiction/Agency

Jurisdiction/ Agency	Plan	Status
AC Transit	2017-18 Onboard Survey Summary of Findings	Completed in 2018
Alameda	Transportation Choices Plan	Completed in 2018
Alameda	General Plan	Updated in 2018
Ashland	Business District Specific Plan	Completed in 2015
Berkeley	Berkeley Strategic Transportation	Completed in 2016
Bay Area Rapid Transit (BART)	2018 BART Customer Satisfaction Study	Completed in 2018
Berkeley	City of Berkeley Bicycle Plan	Completed in 2017
Berkeley	Adeline Specific Plan	In Progress
Cherryland	Business District Specific Plan	Completed in 2015
Hayward	Bicycle and Pedestrian Plan	In Progress
Hayward	Hayward Transit Connector (Shuttle) Feasibility Study	Completed in 2017
Livermore	Bicycle, Pedestrian, and Trails Active Transportation Plan (ATP)	Completed in 2018
Oakland	Pedestrian Master Plan	Updated in 2017
Oakland	East Oakland Neighborhood Initiative	Completed in 2019
Oakland	East Oakland Mobility Action Plan/Community-Based Transportation Plan (see Attachment C)	In Progress
Oakland	City of Oakland Bike Plan	Completed 2019
Oakland	Downtown Oakland Specific Plan	Completed in 2020
Oakland	Northwest Oakland Community Coalition Pilot Plan	In Progress
Oakland	West Oakland Community Action Plan	Completed in 2020
Oakland	West Oakland Specific Plan	Completed in 2014
Port of Oakland	Seaport Air Quality 2020 and Beyond Plan	Completed in 2019
San Leandro	Bicycle and Pedestrian Master Plan	Completed in 2017
Union City	Decoto Neighborhood Plan	Completed in 2016

This page intentionally left blank

Attachment C: Outreach Summary for CBTP

Outreach and engagement for the 2020 CBTP consisted of a countywide poll conducted in 2019 that was presented to the commissioners at the May retreat, intercept surveys at pop up events within CBTP Study areas, and interviews with community-based organizations. A review of Oakland's outreach from recently completed plans that included deep engagement with their communities was also conducted.

2019 Poll

In May 2019, as part of the Commission's retreat, Alameda CTC conducted a countywide poll representative of Alameda County's diverse population across planning areas, and included a deliberate over-sample of residents in CBTP study areas. This allowed us to highlight issues for residents of CoCs in a statistically representative way. Over 15,000 invitations were sent through email and text message. Approximately 500 people completed the survey, nearly 200 of whom are residents of Alameda County CoCs. Findings from this poll were presented at the Commission's May 2019 retreat.

Intercept Surveys and Pop Up Events within CBTP Study Areas

The primary tool for outreach in the county's CoCs was the survey at community pop up events. Survey respondents were asked to identify the methods of transportation they were most likely to use in their daily routine and answer questions about their needs and priorities related to that mode. If they had more time, they were asked to identify their needs and priorities relating to safety, convenience, and accessibility for all modes of transportation. The survey and other collateral materials were made available in English, Spanish, and Chinese.

Pop-up workshops were held at high-traffic locations or events where intercept surveys were collected. A total of 423 surveys were collected at 17 pop-up events held at farmers' markets, recreational events, parks, and BART stations within the CBTP study areas. Pop-ups were held from October 2019 through February 2020.

Interviews with Community-Based Organizations

Community based organizations were interviewed to solicit additional information in the CBTP study areas over a three-week period in early 2020. Four organizations were interviewed during this timeframe to provide focused reflections on the information received from the pop-up workshop surveys. These were San Leandro Creekside Church, Union City Family Center, Larry Orozco Teen Bike Shop (San Leandro) and the Community Resources for Independent Living (Hayward).

Outreach Coordination

The City of Oakland has recently completed extensive engagement with communities in their CoCs through several recently completed and in-progress plans and studies. After consultation with the city, it was determined that outreach should not be duplicated in these areas for the 2020 CBTP update. Recent efforts include the AB 617 community process led by the Bay Area Air Quality Management District in West Oakland, which culminated in the report *Owning Our Air: The West Oakland Community Action Plan*, the Downtown Oakland Specific Plan, the East Oakland Neighborhood Initiative (EONI), a plan that focused on equity-based planning in East Oakland, and the East Oakland Mobility Action Plan which is East Oakland's Community Based Transportation Plan. Alameda CTC has provided planning funds to support the East Oakland Mobility Action Plan. Finally, the Oakland Department of Transportation conducted outreach throughout all of Oakland CoCs as a part of the 2019 Bicycle Plan update.



DATE: April 30, 2020

TO: Alameda County Technical Advisory Committee

FROM: Vivek Bhat, Director of Programming and Project Controls
Jacki Taylor, Senior Program Analyst

SUBJECT: Alameda County Federal Inactive Projects

Recommendation

ACTAC members are requested to review the current Caltrans inactive projects list (Attachment A), which identifies federal funding at risk for deobligation and the actions required by the project sponsor to preserve the funding. This item is for information only.

Summary

Federal regulations require local agencies receiving federal funds to regularly invoice against each federal obligation. Caltrans maintains a list of inactive obligations and projects are added to the list when there has been no invoice activity for the past six months. If Caltrans does not receive an invoice during the subsequent six-month period the project's federal funds will be at risk for deobligation by the Federal Highway Administration (FHWA). ACTAC members are requested to review the latest inactive projects list (Attachment A), which identifies the federal funds at risk and the actions required to avoid deobligation. Local agencies are expected to regularly submit invoices and close out projects in a timely manner. Project sponsors with inactive projects identified in the attached report are to work with directly with their Caltrans District Local Assistance Engineer (DLAE) to clear the inactive invoicing status and provide periodic status updates to Alameda CTC programming staff until the project is removed from the Caltrans report.

Information regarding temporary changes to Caltrans standard invoicing procedures due to COVID-19 is included at the end of the staff report.

Background

In response to FHWA's requirements for processing inactive obligations, Caltrans Local Assistance proactively manages federal obligations, as follows:

- If Caltrans has not received an invoice for obligated funds in over six months, the project will be deemed inactive and added to the list of Federal Inactive

Obligations. The list is posted on the Caltrans website and updated weekly: <https://dot.ca.gov/programs/local-assistance/projects/inactive-projects>.

- Caltrans will notify local agencies the first time a project becomes inactive.
- If Caltrans does not receive an invoice within the following six months (12 months without invoicing), Caltrans will deobligate the unexpended balances. The deobligation process is further detailed in [FHWA's Obligation Funds Management Guide](#), which states that project costs incurred after deobligation are not considered allowable costs for federal participation and are therefore ineligible for future federal reimbursement.

It is the responsibility of local agencies to work in collaboration with their DLAE to ensure projects are removed from the inactive list and avoid deobligation.

Regional Requirements

The Metropolitan Transportation Commission (MTC) Regional Project Delivery Policy, MTC Resolution 3606, states that “Agencies with projects that have not been invoiced against at least once in the previous six months or have not received a reimbursement within the previous nine months have missed the invoicing /reimbursement deadlines and are subject to restrictions placed on future regional discretionary funds and the programming of additional federal funds in the federal TIP until the project receives a reimbursement.” Additionally, MTC may delay the obligation of currently programmed regional discretionary funding to a future year. Thus, agencies with inactive projects must resolve their inactive status promptly to avoid restrictions on future federal funds. MTC actively monitors inactive obligations and periodically contacts project sponsors for status updates.

COVID-19 Impacts

During the COVID-19 outbreak, Caltrans has temporarily exempted its requirement for wet signatures on invoice documents in order to process for payment. Until further notice, Districts will be accepting scanned copies of invoices. All Local Assistance Procedures Manual (LAPM) forms, including Exhibit 5-A Local Agency Invoice form can be found [here](#).

Next Steps

ACTAC members are requested to ensure timely invoicing against each federal obligation and work directly with their Caltrans DLAE to clear inactive projects. Sponsors with inactive projects are requested to provide periodic status updates to Alameda CTC until the project is removed from the Caltrans report. Email status updates to Jacki Taylor, JTaylor@alamedactc.org.

Fiscal Impact: There is no fiscal impact. This is an information item only.

Attachment:

- A. Alameda County Federal Inactive Projects List, dated 3/27/20.

Alameda County Inactive Obligations
Updated by Caltrans 3/27/2020
Project Balances > \$50,000

Updated on 03/27/2020

Project Number	Status	Agency Action Required	Project Prefix	Agency	Project Description	Potential Deobligation Date	Latest Date	Earliest Authorization Date	Latest Payment Date	Last Action Date	Total Cost Amount	Obligations Amount	Expenditure Amount	Unexpended Balance
6480010	Inactive	Invoice overdue. Contact DLAE.	ATPL	Alameda County Transportation Commission	THE EAST BAY GREENWAY-OAKLAND-HAYWARD, CLASS I BIKE FACILITY	01/25/2020	01/25/2019	03/26/2015	01/25/2019	01/25/2019	\$3,000,000	\$2,656,000	\$2,575,508	\$80,492
5012125	Inactive	Project is inactive. Funds at risk. Invoice immediately. Provide status to DLAE.	STPL	Oakland	CITYWIDE STREETS - SEE STATE COMMENT SCREEN FOR ELIGIBLE LOCATIONS, ROAD REHAB & DIETING, BIKE LANES, AND ADA UPGRADES	08/25/2018	08/25/2017	06/08/2014	08/25/2017	08/25/2017	\$5,568,845	\$4,422,000	\$4,077,358	\$344,642
5012127	Inactive	Invoice overdue. Contact DLAE.	CML	Oakland	ON PERALTA ST FROM 7TH ST TO 10TH ST AND FROM 32ND ST TO HAVEN STREET. □ STRIPPING FROM 7TH ST TO WEST GRAND AVE. AND FROM HOLLIS ST. TO 36TH ST. STREET SCAPE	02/26/2020	02/26/2019	02/16/2016	02/26/2019	02/26/2019	\$3,943,753	\$3,098,415	\$3,036,697	\$61,718
5041045	Inactive	Invoice overdue. Contact DLAE.	HSIPL	San Leandro	IN SAN LEANDRO AT THE INTERSECTION OF DAVIS ST AND CARPENTIER ST. INSTALL PEDESTRIAN ACTIVATED HAWK SIGNAL, ACCESSIBLE PEDESTRIAN SIGNAL EQUIPMENT, IMPROVE	11/27/2019	11/27/2018	04/21/2017	11/27/2018	10/17/2019	\$292,655	\$254,405	\$37,655	\$216,750
6480007	Future	Invoice ASAP to avoid inactivity.	STPL	Alameda County Transportation Commission	ALAMEDA COUNTY - COUNTYWIDE, COMMUNITY -BASED TRANSPORTATION PLAN UPDATES	04/17/2020	04/18/2019	10/29/2013	04/18/2019	04/18/2019	\$593,750	\$475,000	\$370,599	\$104,401
5057045	Future	Invoice returned to agency. Contact DLAE.	STPL	Berkeley	SHATTUCK AVENUE, SHATTUCK SQUARE, AND BERKELEY SQUARE FROM ALLSTON WAY TO UNIVERSITY AVENUE. INTERSECTION RECONFIGURE TRAVEL LANES AND PARKING, REPAIR PAVEMENT, AND	06/12/2020	06/13/2019	02/20/2018	06/13/2019	06/13/2019	\$7,298,924	\$2,777,000	\$315,772	\$2,461,228
6204118	Future	Invoice ASAP to avoid inactivity.	HPLUL	Caltrans District 4	INTERSECTION OF I-880/SR92, PLANTING AND IRRIGATION (TC)	06/05/2020	06/06/2019	07/11/2014	06/06/2019	06/06/2019	\$1,259,859	\$1,259,859	\$932,041	\$327,818
5050041	Future	Final invoice paid. Sent to Final Voucher	STPL	Hayward	INDUSTRIAL BLVD. - CLAWITER RD. TO 659 FT. SOUTH OF DEPOT RD. PAVEMENT REHABILITATION	04/10/2020	04/11/2019	01/23/2014	04/11/2019	04/11/2019	\$1,538,563	\$1,335,000	\$1,266,235	\$68,765
5012123	Future	Invoice returned to agency. Contact DLAE.	STPL	Oakland	LAKESIDE DR. FROM MADISON ST. TO HARRISON, HARRISON ST FROM 19TH AVE TO GRAND AVE. THE INTERSECTION OF 19TH ST AND ALICE ST. AND 20TH ST BETWEEN LAKESIDE DR. AND HARRISON	05/13/2020	05/14/2019	02/09/2016	05/14/2019	05/14/2019	\$12,643,334	\$9,200,000	\$8,116,700	\$1,083,300
5012028	Future	Invoice under review by Caltrans. Monitor for progress.	STPLZ	Oakland	23RD AVE BR 33C0148, CAMPUS DR BR 33C0238 & COLISEUM WAY BR 33C0253 SEISMIC RETROFIT	05/23/2020	05/24/2019	09/01/1996	05/24/2019	05/24/2019	\$3,312,953	\$2,897,545	\$2,245,843	\$651,702
5012103	Future	Invoice ASAP to avoid inactivity.	BHLO	Oakland	ADELINE STREET BRIDGE OVER UPRR AMTRAK, BRIDGE# 33C0028 SEISMIC RETROFIT	06/12/2020	06/13/2019	05/04/2011	06/13/2019	06/13/2019	\$712,000	\$630,334	\$386,742	\$243,592
5041048	Future	Invoice ASAP to avoid inactivity.	STPL	San Leandro	IN SAN LEANDRO: WASHINGTON AVENUE FROM WEST JUANA AVENUE TO CASTRO STREET RECONSTRUCT ROADWAY	05/28/2020	05/29/2019	05/29/2019		05/29/2019	\$83,000	\$73,000	\$0	\$73,000
5041046	Future	Invoice ASAP to avoid inactivity.	HSIPL	San Leandro	IN SAN LEANDRO AT THE INTERSECTION OF EAST 14 TH STREET (SR 185) AND JOAQUIN AVE. UPGRADE TRAFFIC SIGNALS, INSTALL PED. SIGNAL PHASING, IMPROVE STRIPPING, SIGNAGE AND	06/12/2020	06/13/2019	10/13/2017	06/13/2019	06/13/2019	\$66,500	\$59,850	\$4,670	\$55,180

Alameda County Inactive Obligations

Updated by Caltrans 3/27/2020

Project Balances < \$50,000

Updated on 03/27/2020

Project Number	Status	Agency Action Required	Project Prefix	Agency	Project Description	Potential Deobligation Date	Latest Date	Earliest Authorization Date	Latest Payment Date	Last Action Date	Total Cost Amount	Obligations Amount	Expenditure Amount	Unexpended Balance
5014040	Inactive	Project is inactive. Funds at risk. Invoice immediately. Provide status to DLAE.	TCSPL	Alameda	INTERSECTIONS OF PARK ST/LINCOLN AVE AND PARK ST/BUENA VISTA AVE, PEDESTRIAN SAFETY TRANSPORTATION IMPROVEMENTS	03/07/2018	03/07/2017	03/22/2013	03/07/2017	03/07/2017	\$319,633	\$282,885	\$253,486	\$29,399
6204105	Inactive	Invoice overdue. Contact DLAE.	HPLUL	Caltrans District 4	I-580 LIVERMORE; GREENVILLE RD TO ISABEL AVE, CONSTRUCT W/B HOV LANE	02/20/2020	02/20/2019	07/10/2012	02/20/2019	02/20/2019	\$73,055,000	\$6,187,759	\$6,187,484	\$275
5012126	Inactive	Invoice overdue. Contact DLAE.	HSIPL	Oakland	SEVEN BLOCK AREA OF GRAND AVE. FROM PARK VIEW TO EUCLID UPGRADE CROSSWALKS: SIGNING, STRIPING, PED SIGNALS	01/25/2020	01/25/2019	08/27/2014	01/25/2019	01/25/2019	\$1,046,847	\$636,756	\$596,754	\$40,002
5012129	Inactive	Final invoice under review by Caltrans. Monitor for progress.	HSIPL	Oakland	9TH ST/MADISON, 8TH ST/JACSON, 8TH/MADISON, 8TH ST/OAK ST, 7TH ST/MADISON UPGRADE TRAFFIC	01/15/2020	01/15/2019	09/02/2014	01/15/2019	01/15/2019	\$936,439	\$606,000	\$566,753	\$39,247
5012118	Inactive	Conditional Delay-Additional docs Required (Fed Reimb)	HSIPL	Oakland	ON 98TH AVE. BETWEEN MACARTHUR BLVD. & EDES AVE., TRAFFIC SIGNALS, PED. CROSSING	11/30/2019	11/30/2018	10/22/2013	11/30/2018	11/30/2018	\$827,745	\$656,900	\$621,091	\$35,809
5178013	Future	Final Invoice under review by Caltrans. Monitor for progress.	SRTSLNI	Albany	ELEMENTARY SCHOOLS IN CITY OF ALBANY, SAFE ROUTES TO SCHOOL PROGRAM	05/20/2020	05/21/2019	08/16/2012	05/21/2019	05/21/2019	\$200,000	\$185,000	\$167,803	\$17,197
5012136	Future	Invoice ASAP to avoid inactivity.	ATPL	Oakland	IN OAKLAND: AT THE INTERSECTIONS OF: (1) 35TH AVE. @ WISCONSIN ST, (2) PLEASANT ST @ BOSTON AVE, (3)	05/06/2020	05/07/2019	07/27/2016	05/07/2019	05/07/2019	\$1,466,091	\$1,236,000	\$1,187,860	\$48,140
5012110	Future	Final invoice paid. Sent to Final Voucher	STPL	Oakland	CITYWIDE AC OVERLAY AC PAVEMENT	05/23/2020	05/24/2019	02/22/2010	05/24/2019	05/24/2019	\$5,160,262	\$4,051,851	\$4,051,844	\$7

Color Key

- Project is inactive for more than 12 months and is carried over from last quarter inactive project list.
- Invoice / Final invoice is under review
- Project is in final voucher process. District can contact Final voucher unit to verify and get an update.
- Invoice is returned and agency needs to contact DLAE to resubmit the invoice.
- Invoice Overdue. Agency needs to provide justification to DLAE.