



# 2020 Countywide Transportation Plan: Community-Based Transportation Plan Update

Kate Lefkowitz, Associate Transportation Planner  
Alameda County Technical Advisory Committee  
May 7, 2020



## Overview

- Community-Based Transportation Plan (CBTP) Background
- 2020 CBTP Approach
- Key Findings
- 2020 Countywide Transportation Plan (CTP) Integration
- Next Steps



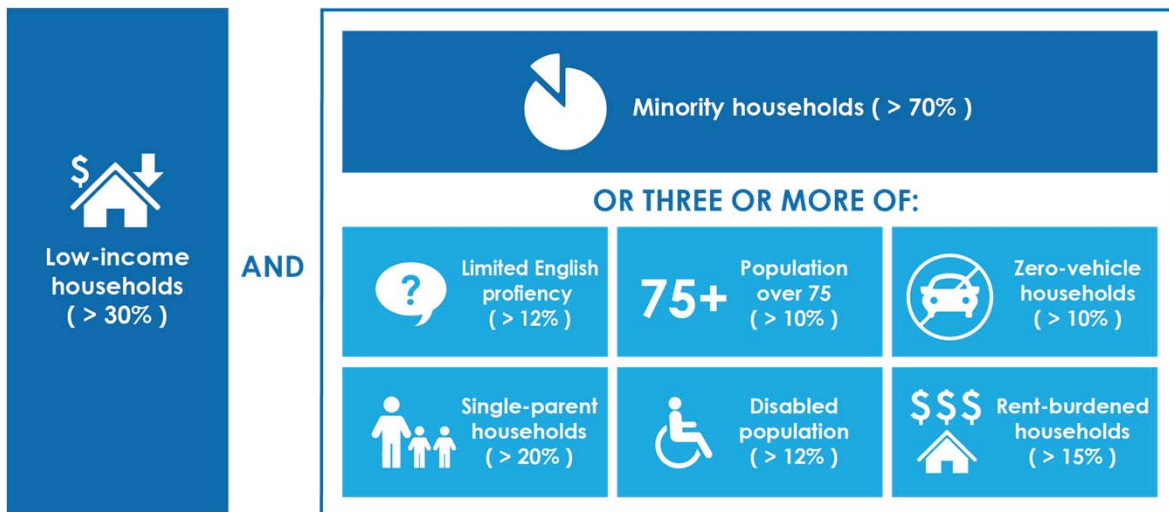
# What are Community-Based Transportation Plans?

## • Background

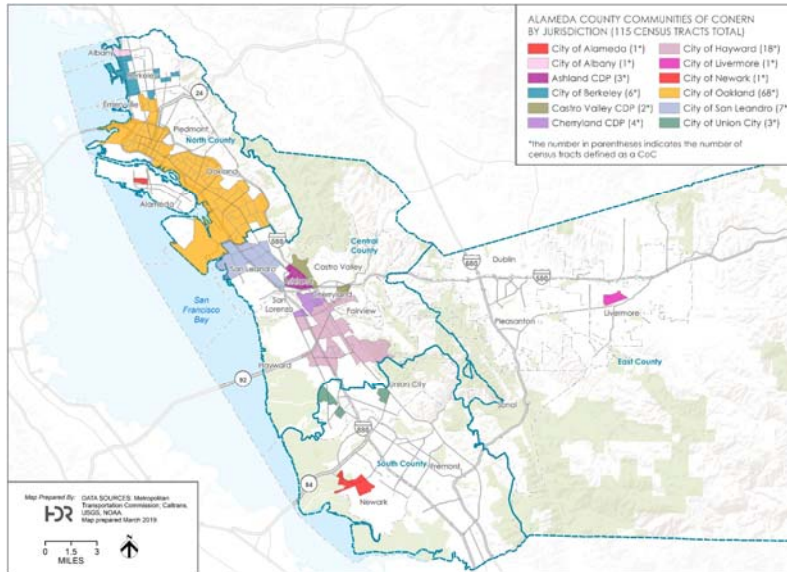
- Started as a Metropolitan Transportation Commission (MTC) initiative focused on working with low-income communities to identify transportation challenges and strategies to overcome them
- Based on MTC adopted Communities of Concern (CoC) defined by census data
- Findings inform and guide decisions on planning, funding and implementation (i.e. Countywide Transportation Plan)



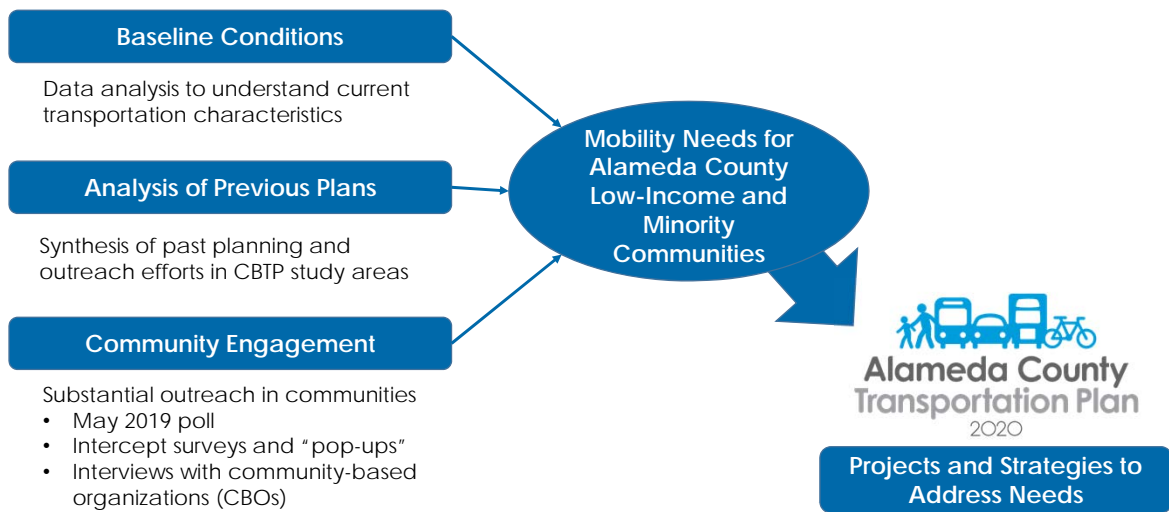
# MTC Community of Concern Factors



# Communities of Concern in Alameda County



## 2020 CBTP Approach



## CBTP Community Engagement Strategies

- 17 **pop-up events** held throughout the County in all four planning areas
  - Worked with city partners to identify outreach opportunities
- 419 **surveys** completed
- Five **community meetings and interviews**



## Key Overall Findings

- **Safe Walking and Biking:** Need for safer walking and biking facilities
- **Pedestrian Quality and Safety:** Need for improved quality of pedestrian infrastructure, including completion of sidewalks, safe crosswalks and more street lighting
- **Affordable Transit Fares:** Affordable transportation options noted as a key concern for residents in CoCs
- **Better Access to Transit:** Expand frequent transit network in CoCs, especially to provide options for off-peak commuters; safer access to transit stops and stations
- **Pavement Quality:** Need to improve pavement condition in CoCs



## Key Findings By Planning Area

- **North**

- Concerns around transit fare affordability
- Pedestrian safety concerns including desire for new sidewalks, street lighting, crosswalks and pedestrian buffer zones

- **Central**

- Concern for traffic and pavement quality
- Safety concerns walking and biking

- **South**

- Need for transit schedule coordination and affordable transit fares
- Concerns regarding traffic and travel flow

- **East**

- Interest in more frequent day time transit
- Desire for better walking facilities



## Key Findings – Community Engagement

*“I would like to see fare discounts for low income people.”*

*“More frequent buses, especially after 10 p.m.”*

*“Need bus stops that are friendly for older adults and people with disabilities.”*



# 2020 CBTP and CTP Integration

Integration with  
2020 CTP

On-going  
Alameda CTC  
Programs

- **Screening Criteria:** CTP project screening includes CoCs as a key criteria to identify projects and programs in 10-year priority list
- **CTP Strategies:** CBTP needs inform projects and overarching strategies
- **Project Development:** Alameda CTC will continue to support cities to develop projects that respond to needs in CBTP study areas
- Continue to address CoC needs through **Student Transit Pass Program, Safe Routes To Schools and Paratransit**



# Next Steps

- **May:** Brief Commissioners by Planning Area to discuss CTP strategies and priority projects that incorporate CBTP findings
- **Summer 2020:** Finalize the CBTP Report
- **Ongoing:** Continue to monitor progress toward implementing CBTP recommendations





# Thank You

Alameda County Transportation Commission • 1111 Broadway, Suite 800  
Oakland, CA 94607 • 510.208.7400