

I-680 Sunol Express Lanes Project Components

Southbound Conversion

- ❖ Southbound Conversion to continuous access from SR262 (Mission) to SR84
- ❖ Integrate the converted express lane system with existing SB toll system, south of SR262
- ❖ Create a single toll operation for NB and SB

Northbound Phase 1

- ❖ South of Auto Mall to SR 84
- ❖ 8.2 miles of HOV/HOT lane

Caltrans Rehab

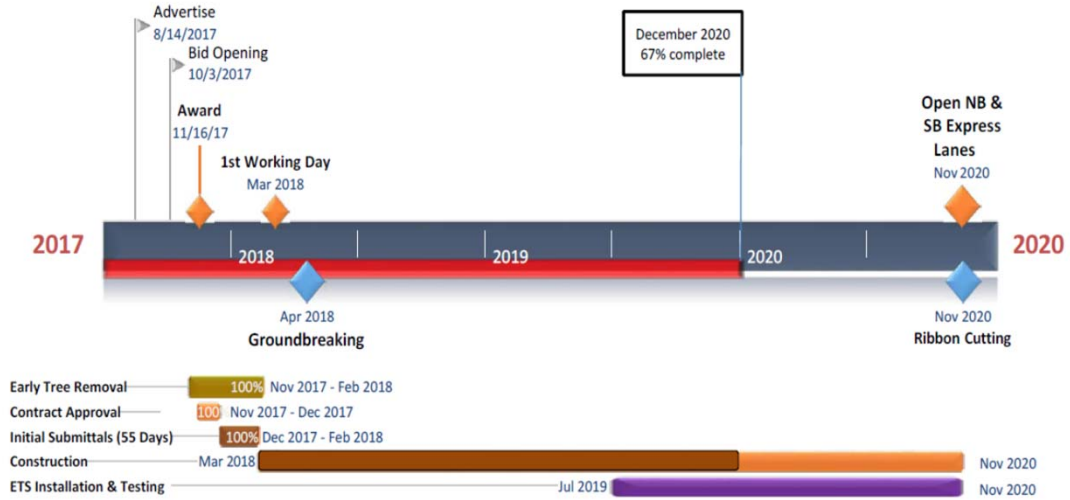
- ❖ Grimmer to Koopman

ALAMEDA COUNTY TRANSPORTATION COMMISSION I-680 SUNOL EXPRESS LANES PROJECT UPDATE

2

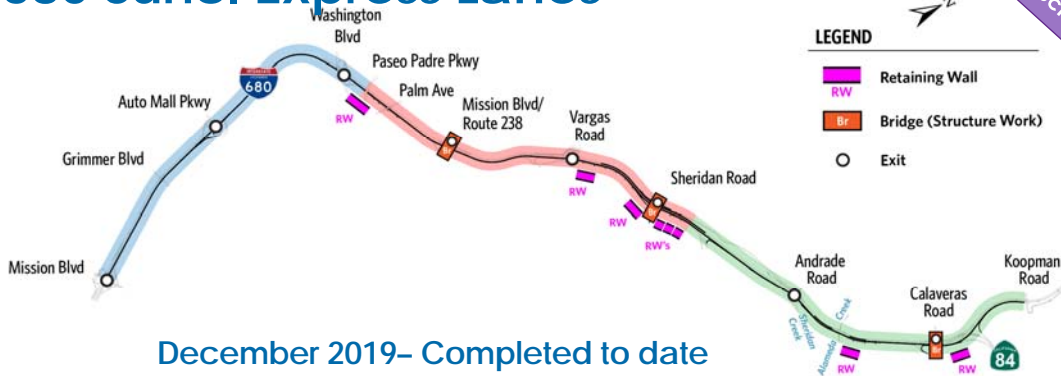
I-680 Sunol Express Lanes

Construction Phase



I-680 Sunol Express Lanes

Construction Phase



December 2019- Completed to date

SEGMENT A

Median Work 100%
Structural 100%
Electrical 85%

SEGMENT B

Median Work 60%
Structural 80%
Electrical 50%

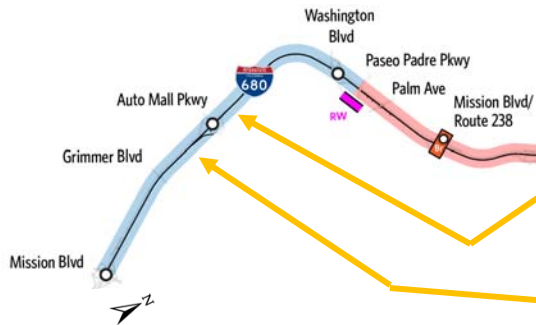
SEGMENT C

Median Work 85%
Structural 85%
Electrical 75%



I-680 Sunol Express Lanes - Segment A

Construction Phase



Installing Fiber Optic Line



Installing Fiber and Power

LEGEND

- Retaining Wall
- RW
- Bridge (Structure Work)
- Br
- Exit

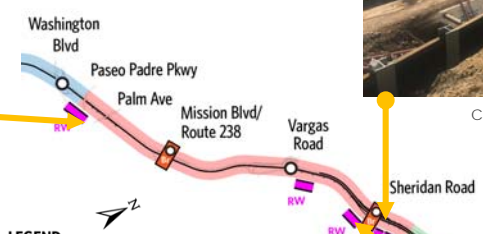


I-680 Sunol Express Lanes - Segment B

Construction Phase



Wall 608 construction.



LEGEND

- Retaining Wall
- RW
- Bridge (Structure Work)
- Br
- Exit



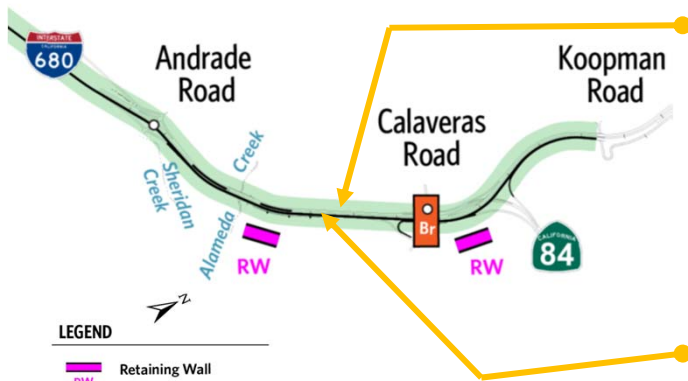
Constructing Drainage System



New Pavement in Front of Wall 711



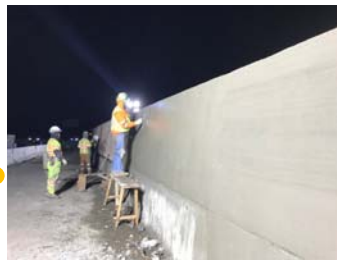
I-680 Sunol Express Lanes - Segment C



- LEGEND**
- Retaining Wall (RW)
 - Bridge (Structure Work) (Br)
 - Exit



Median Barrier Construction - Concrete Pour



Median Barrier Construction - Concrete Finish

Construction Phase



Related Corridor Projects

- 1 SR-84 Widening and SR-84/I-680 Interchange Improvements ("SR-84 Gap Closure")
- 2 I-680 Express Lanes from SR-84 to Alcosta Boulevard Project ("I-680 Gap Closure")
- 3 SR-262 (Mission Boulevard) Cross Connector

