



ALAMEDA
County Transportation
Commission

**Alameda County
Transportation Plan**
2020

**Submission Update and
Draft Screening Approach**

Kristen Villanueva, Planning
ACTAC: November 7, 2019

Project Submissions
Update



Project Submissions

- Received ~300 projects
- Received ~80 programs
- Well over \$30 billion in costs



Project Submissions – Next Steps

- ✓ Reviewing mapping details
- ✓ Confirm project descriptions with sponsors as needed
- ✓ Evaluate potential overlap in submissions
- ✓ Map against screening evaluation factors
- ✓ Consider state of good repair needs (MTC)



Draft Screening Approach

For discussion



Screening Objectives

- Translate CTP goals into plan priorities through evaluation factors
- Provide initial basis to start discussions on priorities
- Use streamlined approach for initial evaluation
 - Qualitative
 - Use information that is readily available
 - Rely on spatial assessment



Screening Objectives

The screening will **not**:

- x Estimate quantitative impacts for projects and programs
- x Provide the sole source of prioritization in CTP
- x Override local prioritization processes

30 year vs 10 year vs 5 year horizons
CTP = 30 year and 10 year



Screening Approach

- Attachment B and C: Draft performance objectives and evaluation factors
- Sources:
 - Alameda CTC modal plans
 - Examples locally and around the state
- 20 objectives including 3 readiness factors for 10-year



Screening Example

2020 CTP Goals

- Accessible, Affordable and Equitable
- Safe, Healthy and Sustainable
- High Quality and Modern Infrastructure
- Economic Vitality

Performance Objectives

1. Improve...
2. Reduce...
3. Increase...

Evaluation Factors

- +0 points
- +1 point
- +2 points
- +3 points



Screening Example

Performance Objectives

1. Improve...
2. Reduce...
3. Increase...

Evaluation Factors

- +0 points
- +1 point
- +2 points
- +3 points

Projects and Programs

- A. BRT on major arterial
- B. Interchange modification
- C. Trail gap closure
- D. Managed lanes on freeway
- E. Downtown bike and ped access improvements



Screening Approach

Draft Evaluation factors support:

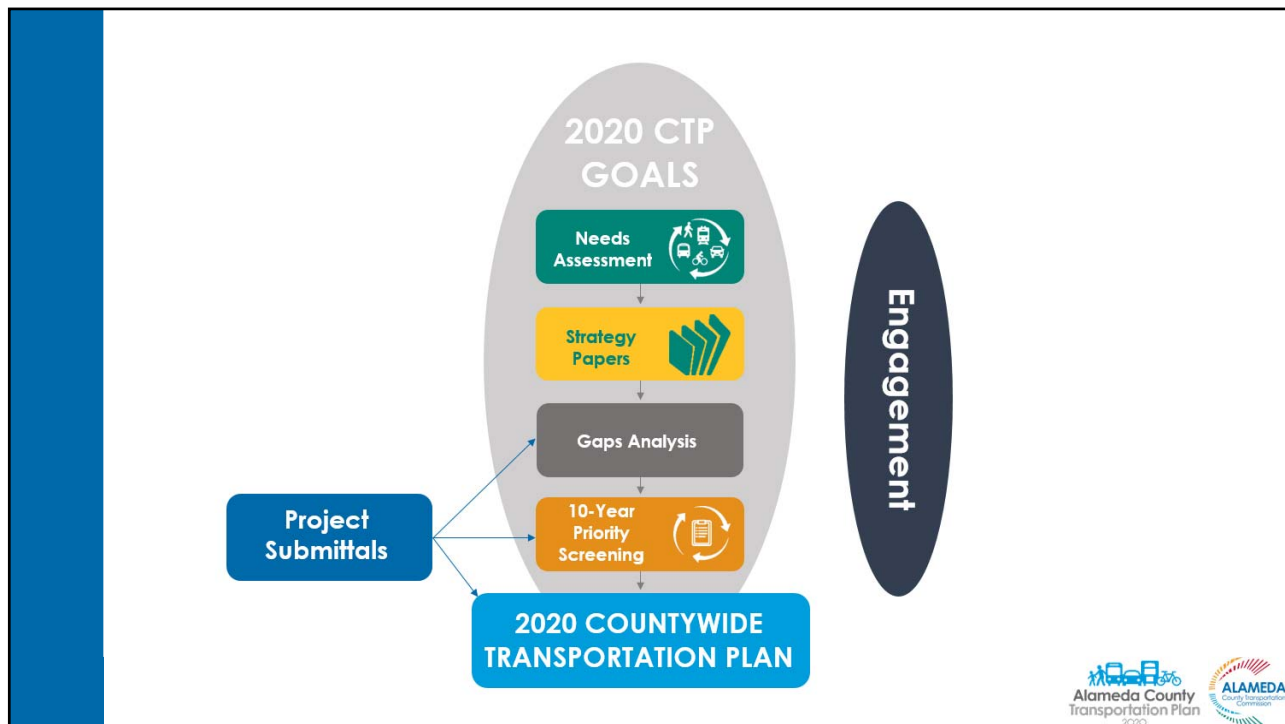
- **Multimodal** nature of projects
- **Safety** for high-injury network and access to major transit corridors
- Investment in **Communities of Concern**
- Opportunities to **carpool, transit, walk or bike**
- Projects of **countywide significance**
- **Community outreach** and some level of project readiness



How will the results be used?

- As first input to CTP projects and programs
- Compare similar types to each other
- Compare projects within planning area
- Basis for discussions with jurisdictions, public, Commissioners
- Concurrently with gaps analysis and strategy papers





Next Steps

November 2019	<ul style="list-style-type: none"> • Receive comments on screening approach • Follow up on projects and programs
Winter 2019/20	<ul style="list-style-type: none"> • Conduct initial screening • Gaps analysis and strategy paper development
Early Spring 2020	<ul style="list-style-type: none"> • Planning-area meetings with jurisdictions on priorities and strategies • Public outreach for CTP
Late Spring 2020	<ul style="list-style-type: none"> • Planning-area meetings with Commissioners on priorities and strategies
Summer 2020	<ul style="list-style-type: none"> • Draft plan release • Public outreach for CTP

In addition:

January – July 2020: Monthly updates to ACTAC on CTP components

Discussion

- **Draft performance objectives and factors**
 - Do they cover full intent of Goals and Goal Statements?
 - Any modifications to evaluation factors?
 - Successful local examples of prioritization?

Comments by November 22 to Kristen Villanueva