



I-680 Sunol Express Lanes Project Components

Southbound Conversion


- ❖ Southbound Conversion to continuous access from SR262 (Mission) to SR84
- ❖ Integrate the converted express lane system with existing SB toll system, south of SR262
- ❖ Create a single toll operation for NB and SB


Northbound Phase 1

- ❖ South of Auto Mall to SR 84
- ❖ 8.2 miles of HOV/HOT lane

Caltrans Rehab

- ❖ Grimmer to Koopman





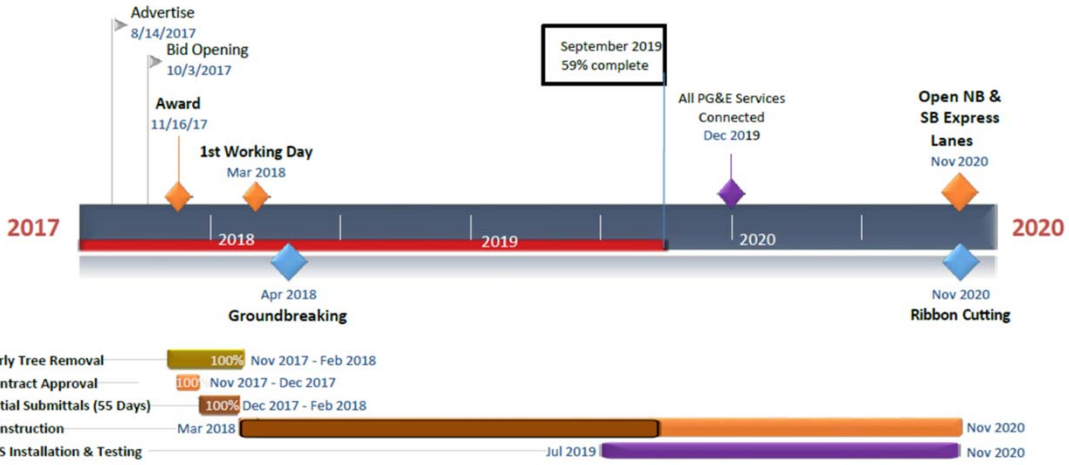
ALAMEDA COUNTY TRANSPORTATION COMMISSION

I-680 SUNOL EXPRESS LANES PROJECT UPDATE

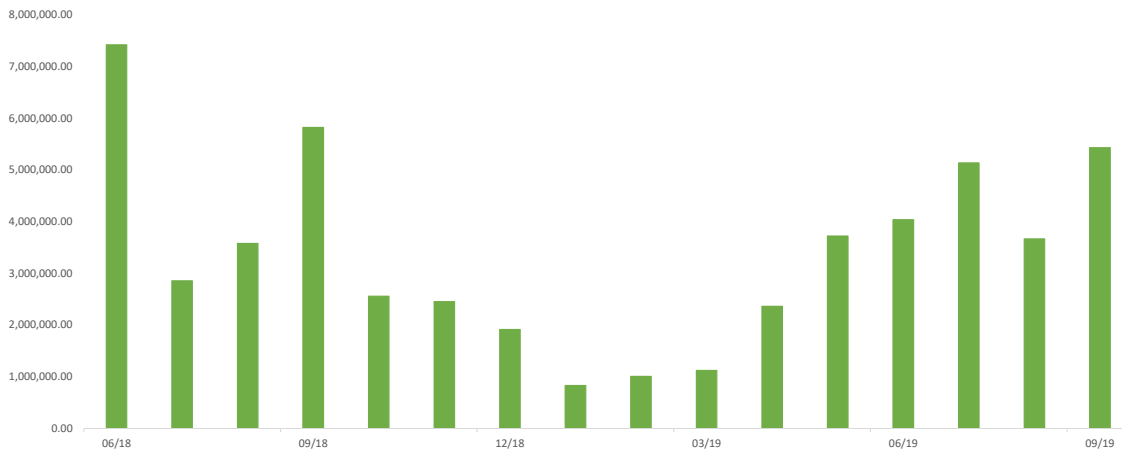
2

I-680 Sunol Express Lanes

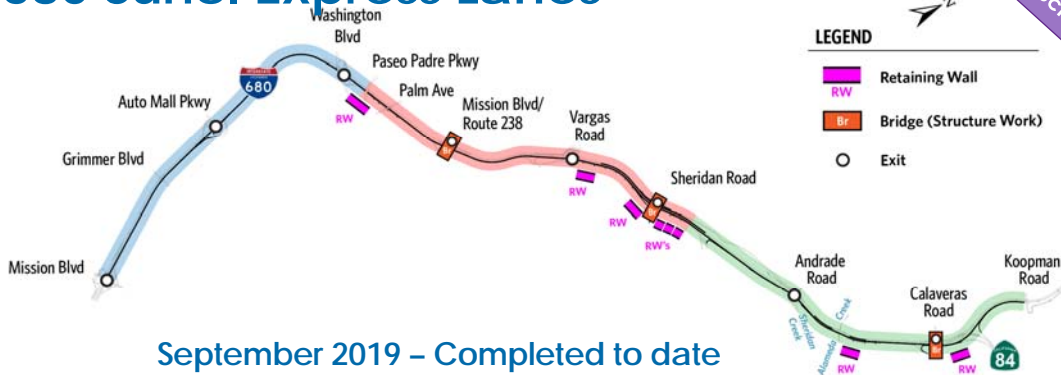
Construction Phase



September 2019 - Payments To Date: \$67.0 M



I-680 Sunol Express Lanes



September 2019 – Completed to date

SEGMENT A

Median Work 95%
Structural 95%
Electrical 80%

SEGMENT B

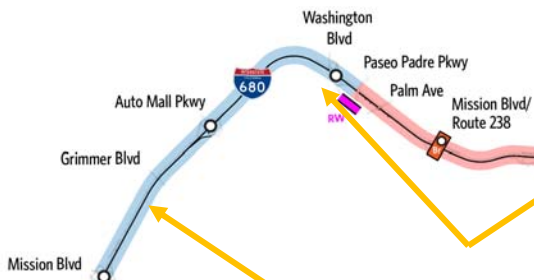
Median Work 60%
Structural 70%
Electrical 50%

SEGMENT C

Median Work 60%
Structural 55%
Electrical 50%



I-680 Sunol Express Lanes - Segment A



Trenching for installation of conduits and fiber.



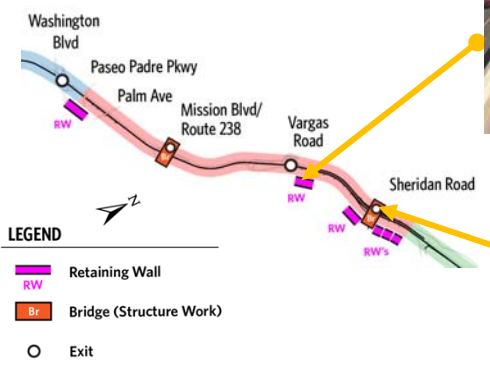
PG&E crew installing meters.

- LEGEND**
- Retaining Wall
 - Bridge (Structure Work)
 - Exit



I-680 Sunol Express Lanes - Segment B

Construction Phase



- LEGEND**
- Retaining Wall
 - Bridge (Structure Work)
 - Exit



Wall 711 construction.

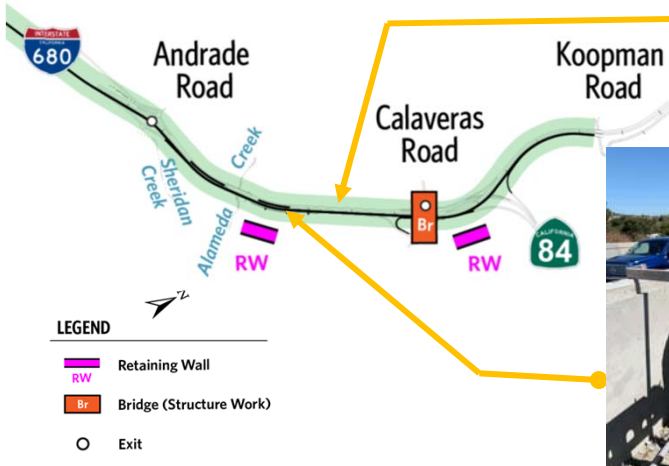


Embankment grading in preparation for the winter.



I-680 Sunol Express Lanes - Segment C

Construction Phase



- LEGEND**
- Retaining Wall
 - Bridge (Structure Work)
 - Exit



Overhead Sign Structure installation.



Electrical box installation.



Related Corridor Projects

- 1 I-680 Express Lanes from SR-84 to Alcosta Boulevard Project ("I-680 Gap Closure")
- 2 SR-84 Widening and SR-84/I-680 Interchange Improvements ("SR-84 Gap Closure")
- 3 SR-262 (Mission Boulevard) Cross Connector

