



ALAMEDA COUNTY TRANSPORTATION COMMISSION

7th Street Grade Separation East (7SGSE) Construction Management Services

Pre-Proposal Meeting

RFP No. R20-0003

August 28, 2019

Agenda

1. Introduction
2. Alameda CTC Overview
3. Governance
4. Project Overview
5. Scope of Work
6. RFP Schedule
7. Proposal Requirements
8. Evaluation/Criteria
9. Award
10. Questions Submittal
11. Proposer Networking Session
12. Questions and Answers

Alameda CTC Overview

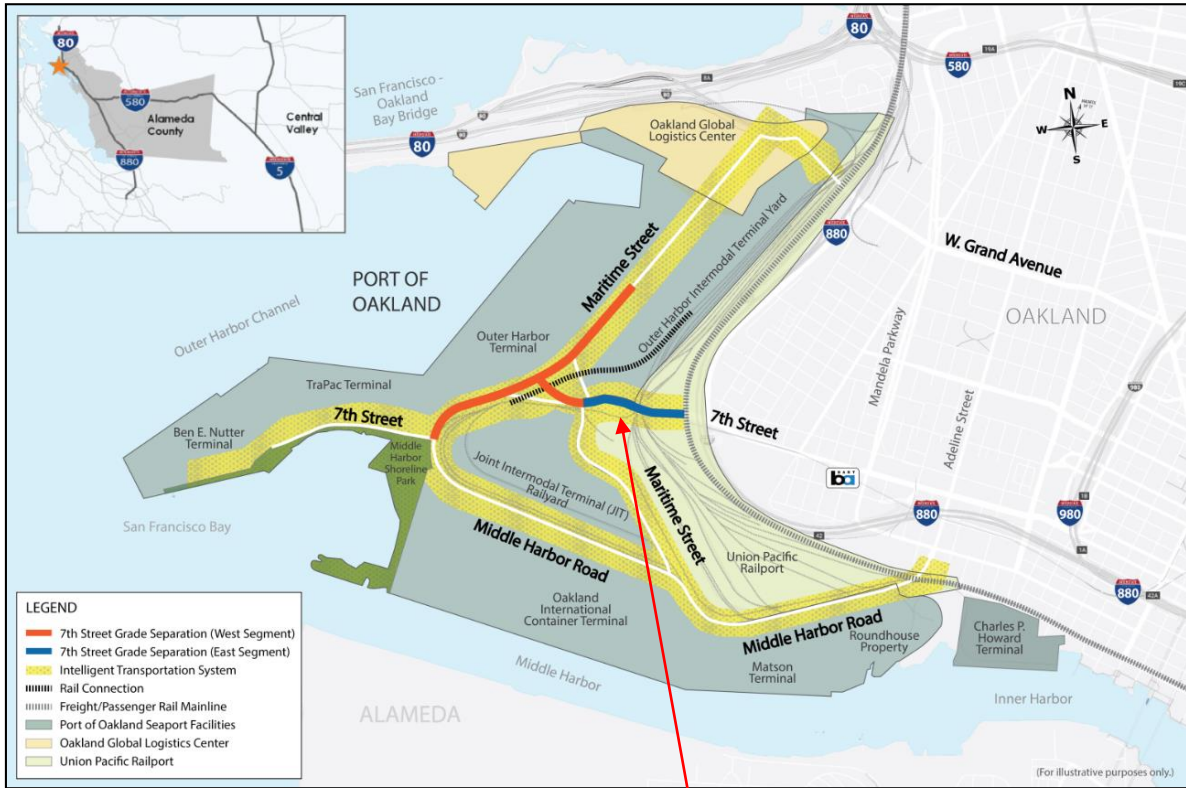
- 1986.** Voters approved Measure B, creating the Alameda County Transportation Authority (ACTA).
- 1991.** Alameda County Congestion Management Agency (ACCMA) was created by a JPA between Alameda County and all its cities.
- 2000.** Voters approved a new Measure B, creating Alameda County Transportation Improvement Authority (ACTIA).
- 2010.** The Alameda County Transportation Commission (Alameda CTC) was created as the result of a merger between ACCMA and ACTIA.
- 2014.** Voters approved Measure BB, which funds the Transportation Expenditure Plan unanimously approved by Alameda CTC.



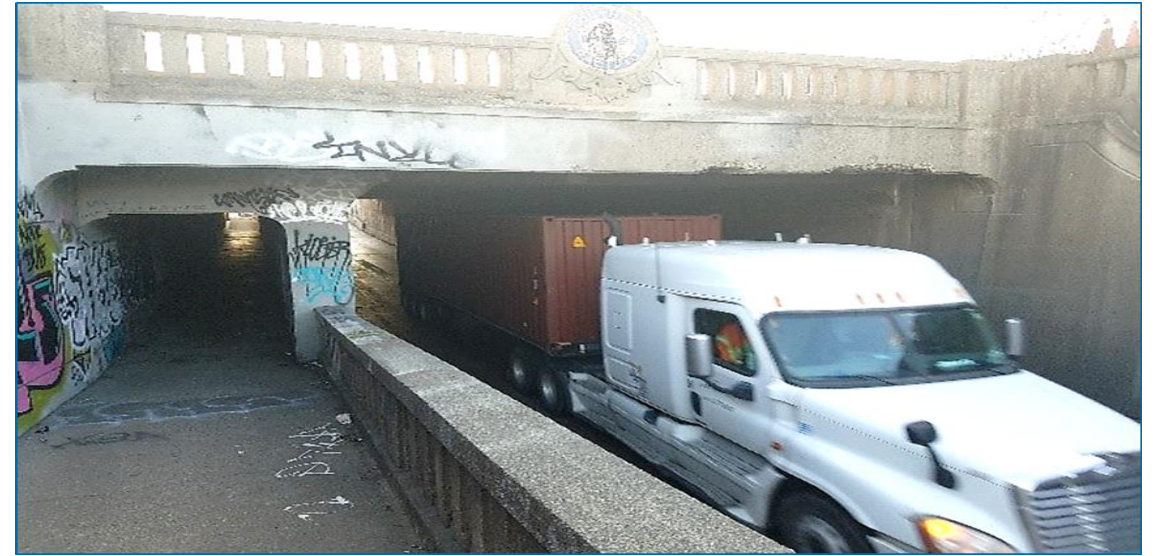
Governance

- Agency is governed by a 22-member Commission:
 - Five Alameda County Supervisors
 - Two Oakland City Council representatives
 - One representative from each of the other 13 city councils
 - One representative each from AC Transit and BART

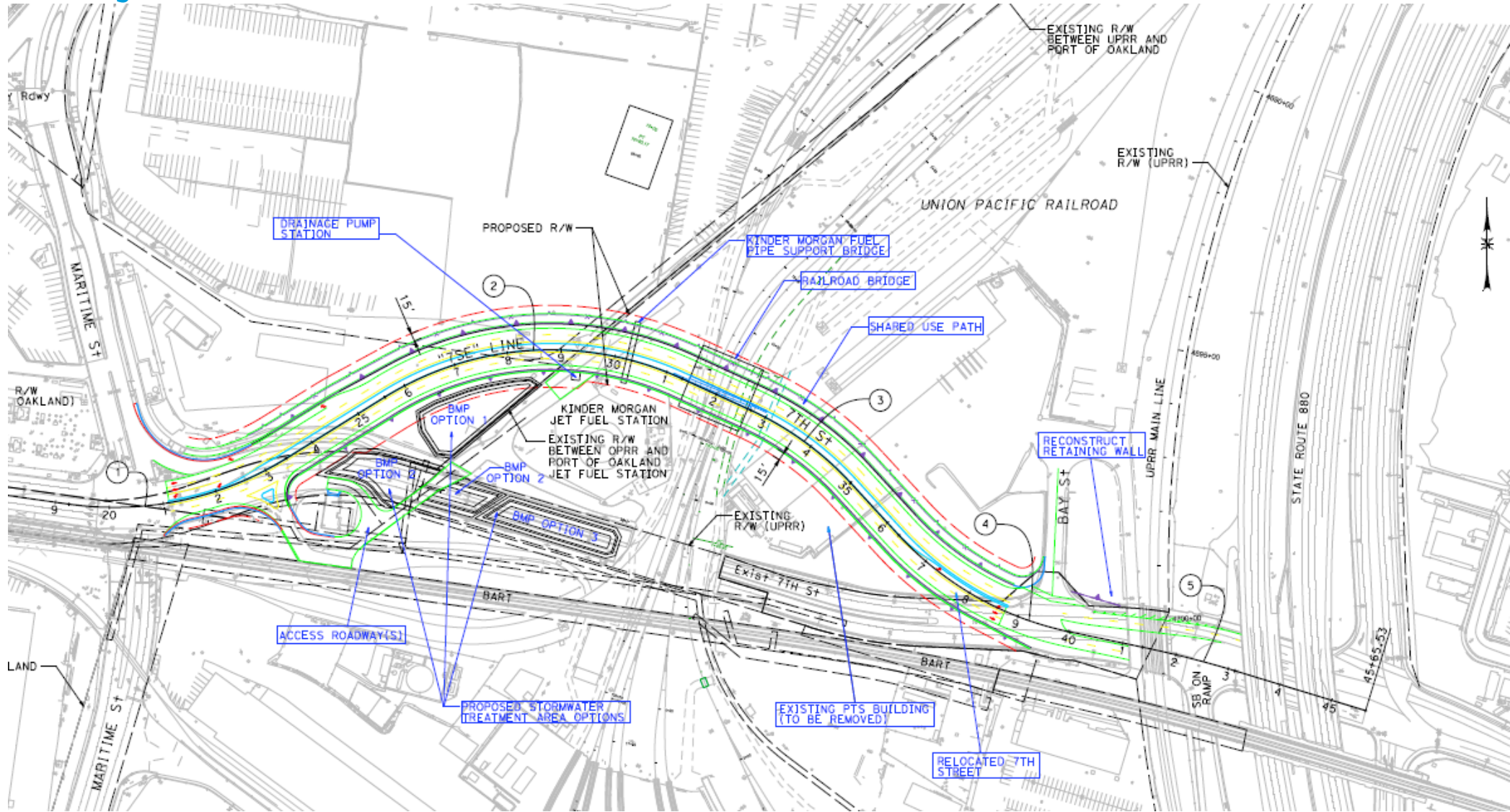
Project Overview



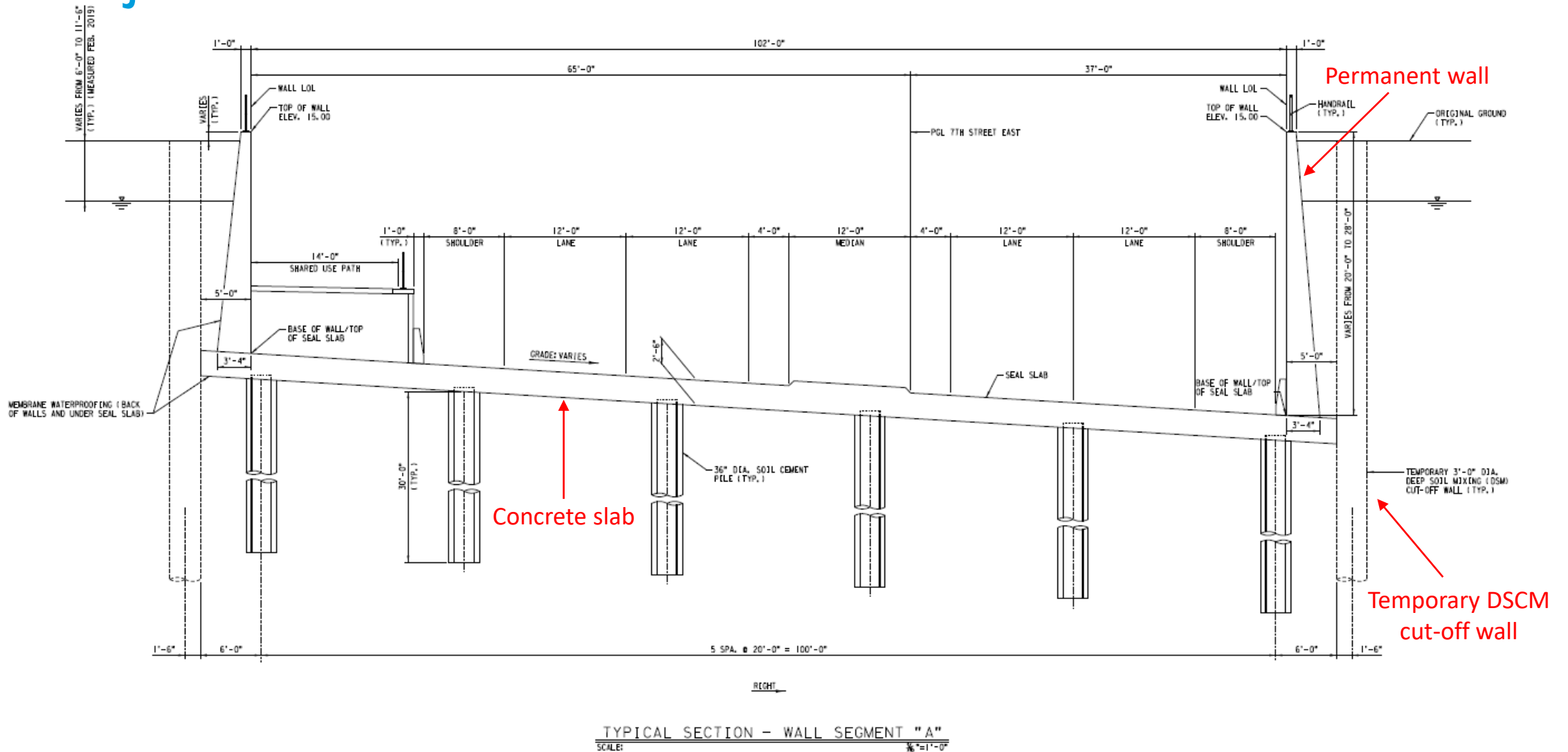
7SGSE Project



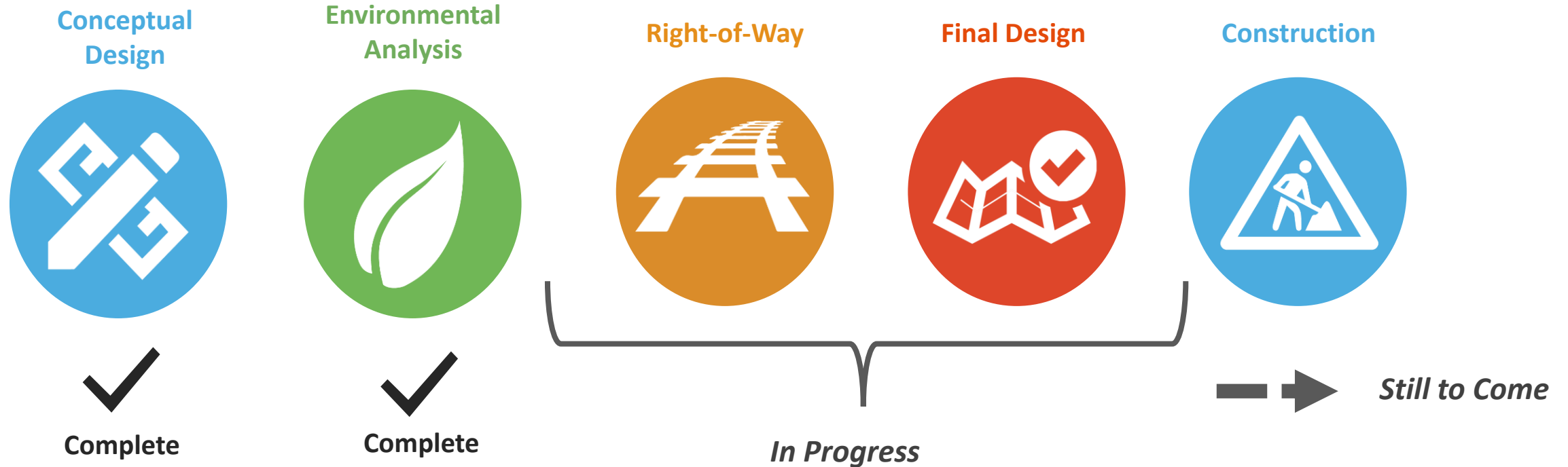
Project Overview



Project Overview



Project Overview



Ready to list (RTL) - February 2020
Advertise - June/July 2020

Scope of Work by Task

The Alameda CTC intends to retain a professional services consultant or consultant team to provide **Construction Management** services.

Base Scope of Work:

- Constructability Review of 100% Design Plans

Optional Scope of Work:

- Construction Management Services

RFP Schedule (RFP Table 1)

LATE SUBMITTALS WILL NOT BE ACCEPTED. SUBMISSIONS TRANSMITTED BY FAX OR EMAIL WILL NOT BE ACCEPTED. SCHEDULE IS IN PACIFIC TIME.

ACTIVITY	DATE/TIME
RFP issued.	August 15, 2019
Mandatory Pre-Proposal Meeting for Primes held at Alameda CTC offices.	August 28, 2019 3:00 p.m.
Project Plans Viewing	September 3-4, 2019 1:00 p.m. to 5:00 p.m. (by appointment)
Deadline for proposers to submit questions. All questions must be directed by email to the Sole Point of Contact.	September 6, 2019 3:00 p.m.
Final Addendum issued, if necessary.	September 12, 2019
Due Date for Proposal and References Forms. References Forms must be submitted by references directly to the Sole Point of Contact via email.	September 19, 2019 3:00 p.m.
Anticipated Proposal Review.	October 21, 2019
Interviews, if necessary.	October 28, 2019
Anticipated Final Evaluation and Determination of Top-Ranked Firm.	October 31, 2019
Contract Award Request to the Alameda CTC Commission	December 5, 2019
Anticipated Contract Commencement.	January 3, 2020



Proposal Requirements (RFP Table 3)

Proposers must provide completed Forms and Certifications (see RFP Table 3) for prime consultant and all subconsultants. **If the proposing firm is unable to do so, it should not submit a proposal to Alameda CTC.**

Collate by form type rather than by firm, with prime first and subs in alphabetical order by firm name; e.g.:

1. Levine Act Statement Forms
 - Prime
 - Sub 1
 - Sub 2

Proposal Requirements (Cost Forms)

- Cost Proposal Form B - **Complete in its entirety, for all firms on your team regardless of tier, including:**
 1. Breakdown of costs (direct rates, fringe & overhead, etc.)
 2. Expense detail (include all vendors/firms incurring costs)
 3. Prime and sub contact information
- Caltrans LAPM Exhibit 10-K (ICR Certification):
 1. The **most current Fiscal Year End (FYE) Indirect Cost Rate (ICR) at the time of submittal must be the one submitted.** E.g., the 2018 FYE ICR must be provided unless only the 2017 FYE ICR is available.

Proposal Requirements (References)

References Forms

- For each key staff member, provide a minimum of three (3) references related to previous projects similar to this project, or elements of this project, on which the key staff member had significant involvement within the past five (5) years. **None of the references shall be from Alameda CTC.**
 - Part A contains Reference's contact details and Reference's project details on which the Proposer worked; this is for Alameda CTC's information and for the Reference to verify.
 - Part B contains the Reference's responses regarding the Proposer.

Form	Proposer Action	Reference Action
Part A	Complete one form for each Key Personnel, include in proposal, and submit to Reference.	Review
Part B	Do not modify; submit to Reference	Complete and submit to Alameda CTC

Proposal Requirements (Package)

- **Technical Proposal (without** cost elements): **6** printed technical proposals, electronic files in Word and PDF formats; conversion to RTF format is acceptable.
- **Cost Proposal (sealed separately** and **labeled** “Cost Proposal Attachment”): **1** printed cost proposal, electronic files in **both** Excel and PDF formats.

Proposals must be submitted in a sealed envelope or container and delivered to the Sole Point of Contact.

Proposers submitting proposals should allow sufficient delivery time to ensure timely receipt by the Alameda CTC. **The time of submittal will be based on the clock at Alameda CTC’s reception desk.**

Prevailing Wage Requirements

Work deemed to be “public works” are subject to the prevailing wage requirements pursuant to the California Labor Code and will be subject to prevailing wage rate compliance monitoring and enforcement by the California Department of Industrial Relations (DIR). Both the prime consultant and any member of the consultant team required to hold a contractor’s license to perform the work assigned to that team member must be registered with the DIR pursuant to Labor Code Sections 1725.5 and 1770 et seq. prior to submittal of any proposal. No contractor or subcontractor may be awarded a contract for public work on a public works project unless registered with the DIR pursuant to the Labor Code. **Proof of such required registration for both the prime consultant and the specific team member holding the contractor's license must be submitted with the proposal.**

- DIR FAQ: www.dir.ca.gov/OPRL/FAQ_PrevailingWage.html
- DIR Wage Determination: www.dir.ca.gov/oprl/DPreWageDetermination.htm

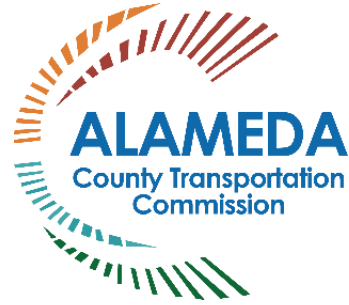
Award

The Selection Review Panel will recommend award to the highest ranked proposer based on the final scoring from the Interview Criteria and will not include the initial scoring of the technical proposals. If the Selection Review Panel determines that interviews are not necessary, proposers will be ranked based on the scoring of the technical proposals.

Sole Point of Contact:

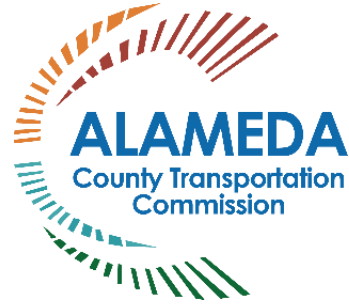
E.W. Cheng (echeng@alamedactc.org)

All communications should be directed to the Sole Point of Contact. **Do not contact other agency staff, project team members, or panel members throughout this procurement process.**



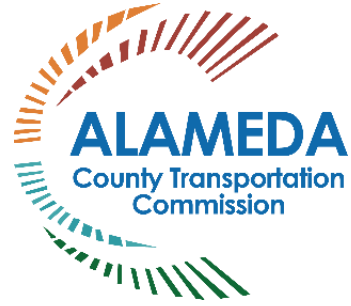
Questions Submittal

Alameda County Transportation Commission • 1111 Broadway, Suite 800
Oakland, CA 94607 • 510.208.7400

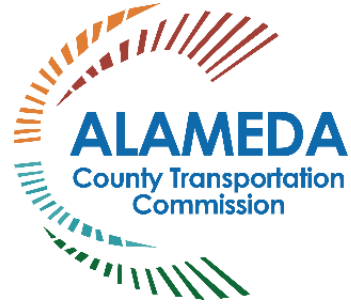


Proposer Networking Session

Alameda County Transportation Commission • 1111 Broadway, Suite 800
Oakland, CA 94607 • 510.208.7400



Q & A



Thank You

For more information, visit

www.AlamedaCTC.org