



Alameda County Technical Advisory Committee Meeting Agenda Thursday, May 9, 2019, 1:30 p.m.

Chair: Arthur L. Dao

Staff Liaison: [Gary Huisingsh](#)

Clerk: [Vanessa Lee](#)

1. Call to Order

2. Introductions/Roll Call

3. Public Comment

4. Consent Calendar

Page/Action

4.1. [Approve the February 7, 2019, ACTAC Meeting Minutes](#)

1 A

5. Planning / Programs / Monitoring

5.1. [Project Updates for Plan Bay Area 2050 and Alameda County 2020 Countywide Transportation Plan](#)

5 I

5.2. [Alameda County Three-Year Project initiation Document Work Plan](#)

13 I

5.3. [Transportation Fund for Clean Air \(TFCA\) FY 2019-20 Program Update](#)

21 I

5.4. [Alameda County Federal Inactive Projects Update](#)

25 I

6. Member Reports

7. Staff Reports

8. Adjournment

Next Meeting: Thursday, June 6, 2019

Notes:

- All items on the agenda are subject to action and/or change by the Commission.
- To comment on an item not on the agenda (3-minute limit), submit a speaker card to the clerk.
- Call 510.208.7450 (Voice) or 1.800.855.7100 (TTY) five days in advance to request a sign-language interpreter.
- If information is needed in another language, contact 510.208.7400. Hard copies available only by request.
- Call 510.208.7400 48 hours in advance to request accommodation or assistance at this meeting.
- Meeting agendas and staff reports are available on the [website calendar](#).
- Alameda CTC is located near 12th St. Oakland City Center BART station and AC Transit bus lines. [Directions and parking information](#) are available online.



Alameda CTC Schedule of Upcoming Meetings for May 2019 through July 2019

Commission Chair

Supervisor Richard Valle, District 2

Commission Vice Chair

Mayor Pauline Cutter,
City of San Leandro

AC Transit

Board President Elsa Ortiz

Alameda County

Supervisor Scott Haggerty, District 1
Supervisor Wilma Chan, District 3
Supervisor Nate Miley, District 4
Supervisor Keith Carson, District 5

BART

Vice President Rebecca Saltzman

City of Alameda

Mayor Marilyn Ezzy Ashcraft

City of Albany

Mayor Rochelle Nason

City of Berkeley

Mayor Jesse Arreguin

City of Dublin

Mayor David Haubert

City of Emeryville

Councilmember John Bauters

City of Fremont

Mayor Lily Mei

City of Hayward

Mayor Barbara Halliday

City of Livermore

Mayor John Marchand

City of Newark

Councilmember Luis Freitas

City of Oakland

Councilmember At-Large
Rebecca Kaplan
Councilmember Sheng Thao

City of Piedmont

Vacant

City of Pleasanton

Mayor Jerry Thorne

City of Union City

Mayor Carol Dutra-Vernaci

| Time | Description | Date |
|------------|--|--|
| 1:30 p.m. | Alameda County Technical Advisory Committee (ACTAC) | June 6, 2019 July 4, 2019 |
| 9:00 a.m. | Finance and Administration Committee (FAC) | May 13, 2019 |
| 9:30 a.m. | I-680 Sunol Smart Carpool Lane Joint Powers Authority (I-680 JPA) | June 10, 2019 |
| 10:00 a.m. | I-580 Express Lane Policy Committee (I-580 PC) | July 8, 2019 |
| 10:30 a.m. | Planning, Policy and Legislation Committee (PPLC) | |
| 12:00 p.m. | Programs and Projects Committee (PPC) | |
| 5:30 p.m. | Bicycle and Pedestrian Community Advisory Committee (BPAC) | May 16, 2019 |
| 1:30 p.m. | Joint Paratransit Advisory and Planning Committee (PAPCO) and Paratransit Technical Advisory Committee (ParaTAC) | May 20, 2019 |
| 2:00 p.m. | Alameda CTC Commission Meeting | May 23, 2019 June 27, 2019 July 25, 2019 |
| 9:30 a.m. | Alameda CTC Commission Retreat | May 30, 2019 |
| 1:30 p.m. | Paratransit Advisory and Planning Committee (PAPCO) | June 24, 2019 |
| 5:30 p.m. | Independent Watchdog Committee (IWC) | July 8, 2019 |

Executive Director

Arthur L. Dao

All meetings are held at Alameda CTC offices located at 1111 Broadway, Suite 800, Oakland, CA 94607. Meeting materials, directions and parking information are all available on the [Alameda CTC website](http://www.AlamedaCTC.org).



Alameda County Technical Advisory Committee Fiscal Year 2018-2019

Member Agencies

AC Transit
BART
City of Alameda
City of Albany
City of Berkeley
City of Dublin
City of Emeryville
City of Fremont
City of Hayward
City of Livermore
City of Newark
City of Oakland
City of Piedmont
City of Pleasanton
City of San Leandro
City of Union City
County of Alameda

Other Agencies

Chair, Alameda CTC
ABAG
ACE
BAAQMD
Caltrans
CHP
LAVTA
MTC
Port of Oakland
Union City Transit
WETA

This page intentionally left blank



Alameda County Technical Advisory Committee Meeting Minutes Thursday, February 7, 2019, 1:30 p.m.

4.1

1111 Broadway, Suite 800, Oakland, CA 94607

• 510.208.7400

• www.AlamedaCTC.org

1. Call to Order

Tess Lengyel called the meeting to order.

2. Roll Call/Introductions

Introductions were conducted. All members were present with the exception of Kevin Connolly, Osh Felfala, Anthony Fournier, Johnny Jaramillo, Fred Kelley, Tony McCaulay, Kevin Sheradin and John Xu

Subsequent to the roll call:

Ruben Izon left during 5.2 before the vote. Steven Lizzargo left during item 5.3

3. Public Comment

There were no public comments.

4. Consent Calendar

4.1. Approval of October 4, 2018 ACTAC Meeting Minutes

Obaid Khan made a motion to approve meeting minutes. Donna Lee seconded the motion. The motion passed with the following votes:

| | |
|----------|--|
| Yes: | Chiu, Evans, Gonzales, Imai, Izon, Javandel, Khan, Larsen, Lee, Leffall, Lengyel, Lizzarago, Ng, Novenario, Ortiz, Payne, Renk, Stella, Victor |
| No: | None |
| Abstain: | None |
| Absent: | Connolly, Felfala, Fournier, Horvath, Jaramillo, Kelley, McCaulay, Sheradin, XU |

5. Programs/Projects/Monitoring

5.1. Approve the 2020 Comprehensive Investment Plan Development Framework

Vivek Bhat stated that staff is requesting the Committee to discuss and approve the 2020 Comprehensive Investment Plan (CIP) developmental framework to program and allocate Alameda CTC's administered fund sources.

During the Committee discussion, many of the members expressed concerns regarding no new funding during the next two years and their ability to deliver projects for their jurisdictions without the ability to leverage funds from other sources. Tess Lengyel stated that staff will meet with the jurisdictions on an

individual basis to access scope, cost and project readiness and the decision to add new projects on a case-by-case basis.

The Committee requested to amend staff's recommendation to allow for consideration of funding for new projects that have the ability to leverage grants from other sources that are in a state of readiness for further development and are being implemented by an agency with a positive delivery.

Hans Larsen made a motion to approve this item with the above amendment. Donna Lee seconded the motion. The motion passed with the following votes:

Yes: Chiu, Evans, Gonzales, Imai, Izon, Javandel, Khan, Larsen, Lee, Leffall, Lengyel, Lizzarago, Ng, Novenario, Ortiz, Payne, Renk, Stella, Victor
No: None
Abstain: None
Absent: Connolly, Felfala, Fournier, Horvath, Jaramillo, Kelley, McCaulay, Sheradin, XU

5.2. Approve the Transportation Fund for Clean Air (TFCA) FY 2019-20 Expenditure Plan Application and Call for Projects

Jacki Taylor stated that it's recommended the Commission approve Resolution 19-001 regarding the TFCA County Program Manager FY 2019-20 Expenditure Plan Application, which is due to the Air District by March 4, 2019 and approve the release of a FY 2019-20 Transportation Fund for Clean Air (TFCA) call for projects.

Ms. Taylor informed the committee that a TFCA call for projects will be released in early March 2019. Ms. Taylor requested that jurisdictions to review the fund estimate and contact her to discuss potential projects. She stated that updated TFCA program guidelines, including the Air District FY 2019-20 TFCA Policies, will be incorporated into the Alameda CTC's 2020 CIP, along with the FY 2019-20 fund estimate and funding recommendations.

Michael Stella asked if there are minimal or maximum funding request amounts. Ms. Taylor said that for TFCA, traditionally Alameda CTC has preferred a minimum grant request of \$50,000, but lower requests can be considered.

Jason Imai stated that the City of Newark does not have enough projects to qualify for TFCA funding. He asked if Newark may exchange money with other cities to deliver projects. Mr. Bhat stated that this request will be taken offline to review the City of Newark options.

Obaid Khan asked if the projects will need to be in the city jurisdiction versus Caltrans. Ms. Taylor said it can work if the city is willing to implement the project and obtains the necessary easement and Caltrans is supportive.

Farid Javandel made a motion to approve this item. Obaid Khan seconded the motion. The motion passed with the following votes:

Yes: Chiu, Evans, Gonzales, Imai, Javandel, Khan, Larsen, Lee, Leffall, Lengyel, Lizzarago, Ng, Novenario, Ortiz, Payne, Renk, Stella, Victor
No: None
Abstain: None
Absent: Connolly, Felfala, Fournier, Horvath, Izon, Jaramillo, Kelley, McCaulay, Sheradin, XU

5.3. 2020 Countywide Transportation Plan and Plan Bay Area 2050 Call for Projects Update

Carolyn Clevenger provided an update on the 2020 Countywide Transportation Plan (CTP) and Plan Bay Area (PBA) 2050 call for projects. Ms. Clevenger stated that there will be a call for projects this spring and noted that the Metropolitan Transportation Commission (MTC) will initiate the call, which will be managed in partnership with Alameda CTC. All projects must be submitted by Alameda CTC to MTC by June, which will also require Alameda CTC Commission approval. Staff is coordinating the MTC call for projects for the Regional Transportation Plan with the CTP in order to save jurisdictions from doing duplicate work. Ms. Clevenger noted that the MTC call for projects will focus on those projects that add capacity to the system. She highlighted the call for projects approach with the Committee. Ms. Clevenger informed the Committee that there will be additional information in March.

This item is for information only.

5.4. Alameda County Federal Inactive Projects Update

Andrea Gomez provided an update on the Caltrans Federal Inactive List. Ms. Gomez explained that federal regulations require agencies receiving federal funds to invoice against each federal obligation at least once every six months and that any project that fails to do so will be identified as an inactive project. She requested ACTAC to review the latest Caltrans inactive list and explained that agencies with inactive projects identified are to work directly with their Caltrans District Local Assistance Engineer (DLAE) to clear the inactive invoicing status, monitor the status of pending invoices and provide periodic status updates to Alameda CTC programming staff until the project is removed from the Caltrans report.

This item is for information only.

6. Members Report

Donna Lee said BART's service will change from 4 to 5 a.m. on Monday, February 11th. She noted that BART will have proved Early Bird Express buses.

Hans Larsen shared the Fremont Mobility Action Plan is scheduled to be on the City of Fremont website on Friday, February 8, 2019. He noted that the creation of this plan was a significant community effort and the number one issue heard from the community was about the job/housing imbalance.

Christy Leffall with MTC provided a brief introduced and highlighted projects taking place at MTC.

Gail Payne with the City of Alameda noted that the city completed their Annual Report First Transportation Plan and they've completed their work plan.

7. Staff Report

Carolyn Clevenger said Alameda CTC has a Bicycle and Pedestrian Count Program. She noted that staff will provide ACTAC with data from 2018 county cycle, and that data from past counts will be available on the Alameda CTC website. She also noted that for the first time scooters were counted.

8. Adjournment

The meeting adjourned at 3:00 p.m. The next meeting is scheduled for March 7, 2019 at the Alameda CTC offices.



Memorandum

5.1

1111 Broadway, Suite 800, Oakland, CA 94607

• 510.208.7400

• www.AlamedaCTC.org

DATE: May 2, 2019

TO: Alameda County Technical Advisory Committee

FROM: Carolyn Clevenger, Director of Planning
Saravana Suthanthira, Principal Transportation Planner
Kristen Villanueva, Senior Transportation Planner

SUBJECT: Project Updates for Plan Bay Area 2050 and Alameda County 2020 Countywide Transportation Plan

Recommendation

This item is to provide the Alameda County Technical Advisory Committee (ACTAC) with information on project updates and submissions that will be required for development of the next cycle of regional and countywide transportation plans.

Summary

The Metropolitan Transportation Commission (MTC) is updating the current Regional Transportation Plan (Plan Bay Area 2040) for development of Plan Bay Area 2050 (PBA 2050). Alameda CTC is also starting work on the 2020 Countywide Transportation Plan (CTP) at this time. Since the CTP informs the regional plan, Alameda CTC will closely coordinate the update efforts.

One major component of the regional plan is a fiscally constrained list of transportation projects and programs. To develop this project list, MTC has been soliciting project information across several efforts. The current request, which MTC requests the county agencies to facilitate, is on **regionally-significant, non-exempt projects as defined on the next page**. These projects constitute a subset of the types of projects that will be in the regional plan. Last month, Alameda CTC reached out to ACTAC members to update projects of this type from the last regional plan and provide information on any new non-exempt projects agencies want considered for inclusion in PBA 2050. An update to the remainder of project types, which includes exempt projects and programs, will be carried out in fall 2019 for the purposes of PBA 2050 and the 2020 CTP.

In the context of Plan Bay Area 2050, a project proposal will be deemed **regionally-significant, non-exempt** if it meets any of the following:

- Expands or extends the principal arterial system (length must be greater than ¼ mile)
- Expands or extends a roadway to become part of the principal arterial system (length must be greater than ¼ mile)
- Reduces the number of lanes (e.g., road diet) of the principal arterial system (length must be greater than ¼ mile)
- Adds new or expands access to the principal arterial system (e.g., new interchanges or interchange modifications that add capacity)
- Extends or expands the fixed guideway transit infrastructure
- Adds new or expands transit stations or terminals, including parking facilities
- Expands transit fleets or service levels (e.g., increased frequency, hours of operation)
- Alters the cost for users of the transportation system (e.g., cordon pricing, tolling, transit fares).

At the May ACTAC meeting, staff will provide a handout that summarizes the responses received through end of April regarding the regionally-significant, non-exempt projects. Staff plans to present a full list of these to the Commission at its June meeting. For consideration in PBA 2050, MTC requires a board-approved project list for this particular subset of projects be submitted by July 2019.

Background

In order to meet federal and state air-quality planning requirements for the regional plan, MTC conducts technical analyses of regionally-significant, non-exempt projects. These are projects that change road or transit capacity, such as adding an express lane, widening a major arterial, or increasing bus frequency. These projects are listed individually in the regional plan and represent a subset of transportation projects currently being planned and developed in Alameda County. Many local projects, such as traffic signal modernization or bicycle and pedestrian improvements are considered “exempt” and are listed in programmatic categories for the regional plan. **Attachment A** includes the project types that MTC currently proposes as exempt, programmatic categories. Exempt projects are not required until the fall.

In March, MTC requested that county transportation agencies and regional transit agencies update information for **regionally-significant, non-exempt projects** that were already included in the current Plan Bay Area 2040 and to provide information on potential new projects as appropriate. In early April, Alameda CTC staff solicited updates to the list of these projects by contacting ACTAC members from the local jurisdiction and transit agencies. At the May 2019 ACTAC meeting, staff will provide a handout that summarizes the responses received through April.

This project update is part of a multi-step process for developing the regional plan. MTC's full schedule for Plan Bay Area 2050 is shown in Attachment B. Solicitations for

transportation projects are planned to occur over three steps, of which the current update is Step 2:

1. Request for Transformative Projects: In late 2018, MTC started the process with a call for regional projects that could “transform” the region and that cost over \$1 billion. MTC received 35 applications from public agencies. In Alameda County, Alameda CTC, Cities of Oakland, Newark and AC Transit submitted projects for consideration.
- 2. Update to the regionally-significant, non-exempt projects, which is the current effort.**
3. Update projects that are not regionally-significant and are exempt. These will be grouped into programmatic categories as was done for the [2016 CTP](#). These project types represent the majority of projects in the CTP. Alameda CTC will start collecting this information later this summer.

The final step of the regional plan is to compare project needs with an estimate of reasonably available revenues and develop a fiscally-constrained project list. MTC will prepare the fiscally-constrained project list from the results of project evaluations, needs assessments for local streets and roads and transit operating and capital, and a forecast of reasonably expected revenues. Alameda CTC will be actively participating in this step.

Relationship to the 2020 CTP

Every four years, Alameda CTC prepares and updates the CTP, which is a long-range planning and policy document to guide future transportation development for all transportation modes and users in Alameda County. The CTP is also a foundation for Alameda County’s transportation projects and priorities in the regional plan.

The existing CTP was adopted in 2016, and is due for an update by 2020. The 2020 CTP will have a 2050 horizon, consistent with the next regional plan, and will address opportunities and challenges facing the county’s transportation system, assess potential impacts of major trends on the transportation system, and articulate a set of priority initiatives, including projects, programs and policies. While the CTP will look out to 2050 to consider long-term trends and challenges, given the huge uncertainties when looking that far into the future, the effort will also focus on identifying a more near-term vision to guide Alameda CTC’s transportation planning efforts.

Given the CTP’s inter-dependence with the regional plan, requests for updated information on projects for the regional plan will serve as updates to projects for the 2020 CTP. This coordinated approach should help ensure consistency between the two documents and streamline the process for local agency and Alameda CTC staff. Compared to the regional plan, more detail on the exempt, non-regionally significant projects and county programs will be included in the CTP.

Next Steps

Staff plans to present a full list of the county's regionally-significant, non-exempt projects to the Commission at its June 2019 meeting. MTC requires a board-approved project list for this particular subset of projects be submitted for consideration in PBA 2050 by July 2019.

In late summer, staff will solicit an update to exempt, non-regionally significant projects and programs for both the 2020 CTP and Plan Bay Area 2050 using the [2016 CTP](#) as a starting point.

Fiscal Impact: There is no fiscal impact associated with the requested action.

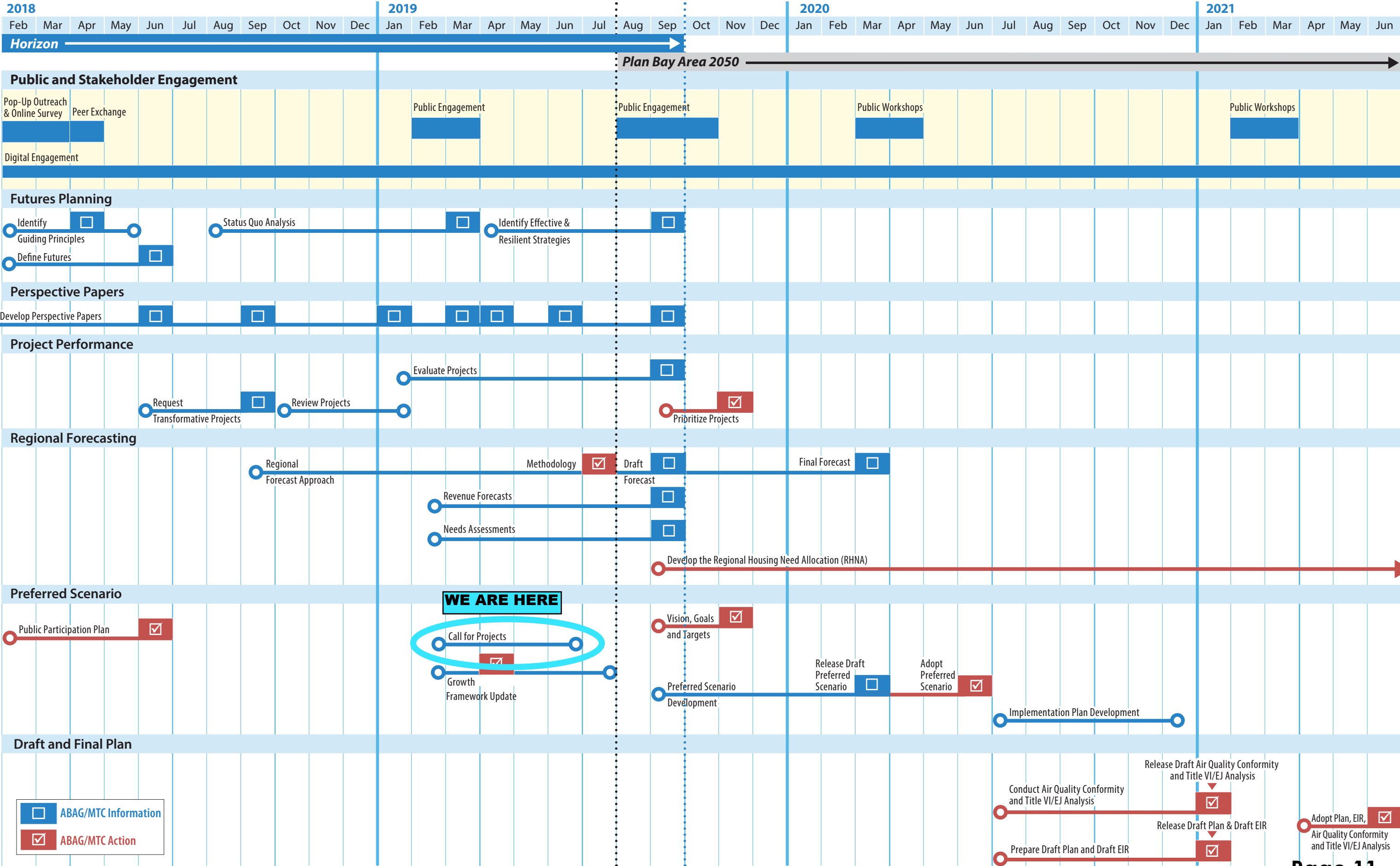
Attachments:

- A. List of programmatic category types for Plan Bay Area 2050
- B. Plan Bay Area 2050 Schedule

The proposed programmatic categories and example project types are listed below:

| Category | Systems | Project Types |
|-------------------------------------|---|---|
| Minor Highway Improvements | <ul style="list-style-type: none"> State Highway | <ul style="list-style-type: none"> minor highway extension or new lane (less than ¼ mile); interchange modification (no additional capacity) |
| Minor Roadway Improvements | <ul style="list-style-type: none"> Local Road | <ul style="list-style-type: none"> minor local road extension or new lane (less than ¼ mile) |
| Minor Transit Improvements | <ul style="list-style-type: none"> Public Transit | <ul style="list-style-type: none"> minor/routine expansions to fleet and service; purchase of ferry vessels (that can be accommodated by existing facilities or new CE facilities); construction of small passenger shelters and information kiosks; small-scale/CE bus terminals and transfer points; public transit-human services projects and programs (including many Lifeline Transportation Program projects); ADA compliance; noise mitigation; landscaping; associated transit improvements (including bike/pedestrian access improvements); alternative fuel vehicles and facilities |
| Minor Freight Improvements | <ul style="list-style-type: none"> Freight | <ul style="list-style-type: none"> construction of new, or improvements to existing, rest areas and truck weigh stations; improvements to existing freight terminals (not expansion) |
| New Bicycle & Pedestrian Facilities | <ul style="list-style-type: none"> Local Road State Highway | <ul style="list-style-type: none"> new and extended bike and pedestrian facilities |
| Preservation/Rehabilitation | <ul style="list-style-type: none"> Local Road State Highway Public Transit Tollway Freight | <ul style="list-style-type: none"> pavement resurfacing and/or rehabilitation; bike/pedestrian facilities rehabilitation; non-pavement rehabilitation; preventive maintenance; emergency repair; bridge rehabilitation, replacement or retrofit with no new capacity; transit vehicle rehabilitation or replacement; reconstruction or renovation of transit buildings and structures; rehabilitation or reconstruction of track structures, track, and trackbed in existing rights-of-way; construction of new bus or rail storage/maintenance facilities (in industrial locations with adequate transportation capacity); modernization or minor expansions of transit structures and facilities outside existing right-of-way, such as bridges, stations, or rail yards; purchase of office and shop and operating equipment for existing facilities; purchase of operating equipment for vehicles, such as farebox, lifts, radios; purchase of support vehicles; toll bridge rehabilitation, replacement, or retrofit with no new capacity; freight track and terminal rehabilitation |
| Routine Operations & Maintenance | <ul style="list-style-type: none"> Local Road State Highway Public Transit Tollway | <ul style="list-style-type: none"> routine patching and pothole repair; litter control, sweeping and cleaning; signal operations; communications; lighting; transit operations and fare collection; transit preventive maintenance; toll operations & fare collection |
| Management Systems | <ul style="list-style-type: none"> Local Road State Highway Public Transit Tollway | <ul style="list-style-type: none"> incident management; signal coordination; ITS; TOS/CMS; |

| | | |
|--|--|--|
| | | <ul style="list-style-type: none"> • ramp metering; • transit management systems; • automatic passenger counters; • CAD-AVL; • fare media; • Transit Sustainability Project; • construction or renovation of power, signal, and communications systems; • toll management systems; • toll media |
| Safety & Security | <ul style="list-style-type: none"> • Local Road • State Highway • Public Transit • Freight | <ul style="list-style-type: none"> • railroad/highway crossings and warning devices; • hazardous location or feature; • shoulder improvements; sight distance; • Highway Safety Improvement Program implementation; • Safe Routes to Schools projects and programs; • traffic control devices other than signalization; • guardrails, median barriers, crash cushions; pavement marking; • fencing; • skid treatments; • lighting improvements; • widening narrow pavements with no added capacity; • changes in vertical and horizontal alignment; • transit safety and communications and surveillance systems; • rail sight distance and realignments for safety; • safety roadside rest areas; • truck climbing lanes outside urban area; • emergency truck pullovers |
| Travel Demand Management | <ul style="list-style-type: none"> • Local Road • State Highway • Other | <ul style="list-style-type: none"> • car and bike share; • alternative fuel vehicles and facilities; • parking programs; • carpool/vanpool, ridesharing activities; • information, marketing and outreach; • traveler information |
| Intersection Improvements | <ul style="list-style-type: none"> • Local Road | <ul style="list-style-type: none"> • intersection channelization; • intersection signalization at individual intersections |
| Multimodal Streetscape Improvements | <ul style="list-style-type: none"> • Local Road | <ul style="list-style-type: none"> • minor bicycle and/or pedestrian facility gap closure; • ADA compliance; • landscaping; • lighting; • streetscape improvements; • minor road diet (less than ¼ mile) |
| Land Use | <ul style="list-style-type: none"> • Other | <ul style="list-style-type: none"> • land conservation projects; • TOD housing projects |
| Planning | <ul style="list-style-type: none"> • Other | <ul style="list-style-type: none"> • planning and research that does not lead directly to construction |
| Emission Reduction Technologies | <ul style="list-style-type: none"> • Other | |



Horizon

Plan Bay Area 2050

Public and Stakeholder Engagement

Pop-Up Outreach & Online Survey
Peer Exchange
Public Engagement
Public Engagement
Public Workshops
Public Workshops
Digital Engagement

Futures Planning

Identify Guiding Principles
Define Futures
Status Quo Analysis
Identify Effective & Resilient Strategies

Perspective Papers

Develop Perspective Papers

Project Performance

Request Transformative Projects
Review Projects
Evaluate Projects
Prioritize Projects

Regional Forecasting

Regional Forecast Approach
Methodology
Draft Forecast
Final Forecast
Revenue Forecasts
Needs Assessments
Develop the Regional Housing Need Allocation (RHNA)

Preferred Scenario

Public Participation Plan
Call for Projects
Growth Framework Update
Vision, Goals and Targets
Preferred Scenario Development
Release Draft Preferred Scenario
Adopt Preferred Scenario
Implementation Plan Development

Draft and Final Plan

Conduct Air Quality Conformity and Title VI/EJ Analysis
Release Draft Air Quality Conformity and Title VI/EJ Analysis
Release Draft Plan & Draft EIR
Prepare Draft Plan and Draft EIR
Adopt Plan, EIR, Air Quality Conformity and Title VI/EJ Analysis

WE ARE HERE

ABAG/MTC Information

ABAG/MTC Action

This page intentionally left blank



Memorandum

5.2

1111 Broadway, Suite 800, Oakland, CA 94607

• 510.208.7400

• www.AlamedaCTC.org

DATE: May 2, 2019

TO: Alameda County Technical Advisory Committee

FROM: Vivek Bhat, Director of Programming and Project Controls
Jacki Taylor, Senior Program Analyst

SUBJECT: Alameda County Three-Year Project Initiation Document (PID)
Work Plan

Recommendation

This item is to provide an update on the development of the FY 2019-20 Alameda County Three-Year Project Initiation Document (PID) Work Plan. This item is for information only.

Summary

Each year, the Alameda CTC is to provide Caltrans with an updated Three-Year PID Work Plan for Alameda County. The proposed draft update (Attachment A) covers FYs 2019-20, 2020-21 and 2021-22 and reflects the comments received to date. Final comments are requested by Friday, May 17, 2019.

Background

A Project Study Report/Project Initiation Document (PSR/PID) is a document that details the scope, cost, and schedule of a proposed project and is required to be completed prior to receiving programming in the State Transportation Improvement Program (STIP). Caltrans may act as the lead agency or provide quality assurance or oversight services for projects wherein local agencies act as the lead agency.

Caltrans has requested the Alameda CTC update the Three-Year PID Work Plan for Alameda County, covering FYs 2019-20, 2020-21 and 2021-22. A draft document is included as Attachment A. Per Caltrans' Non- SHOPP Workload Guidance, any PSR/PID work that needs Caltrans oversight must be listed in this three-year Work Plan, which Caltrans annually approves by July 1st.

Local agencies that wish to initiate a PSR/PID document would need to have the project included in the Caltrans-approved PID Work Plan, execute a cooperative agreement with Caltrans and reimburse Caltrans for their oversight services. The only exception is if the proposed project is entirely funded using State resources.

In addition to newly proposed projects, the FY 2019-20 list also includes projects carried over from the FY 2018-19 work plan. Project sponsors are provided an opportunity to re-prioritize, add and delete projects during the development of the next year's plan. Initial comments were requested in early April. ACTAC is requested to review and provide final comments on the draft FY 2019-20 Three-year PID Work Plan to Jacki Taylor, JTaylor@alamedactc.org, by Friday May 17, 2019.

Fiscal Impact: There is no fiscal impact associated with the requested action.

Attachment:

- A. Alameda County Draft FY 2019-20 Three-Year PID Work Plan, covering FYs 2019-20, 2020-21 and 2021-22

DRAFT Alameda County Three-Year PID Work Plan (FYs 2019/20 2020/21, and 2021/22)

| Index | "SHA" or "R" (Reimbursement) | Executed Reimbursement Agreement (Y/N) | Agreement Number | Lead/ QA/ IQA | Route | Begin Postmile | End Postmile | Purpose & Need | Description | Location | RTP Project Number | Initiation Date (MM/DD/YYYY) | Estimated PID Completion Date (MM/YYYY) | Capital Cost (\$M) | Support Cost (\$M) | Type of PID | Project Sponsor | Implementing Agency | Sponsor Status Update/ Notes (Remove from PID List, Change Year, Etc.) |
|--|---------------------------------|---|------------------|---------------|-------|----------------|--------------|------------------------------------|---|--|----------------------------|---------------------------------|--|--------------------|--------------------|-------------|-----------------------------|------------------------|---|
| PROPOSED FY 2019/20 WORK PLAN (includes Prior Years) | | | | | | | | | | | | | | | | | | | |
| 1 | R | Y | 04-2689 | IQA | 61 | 6.2 | 7.0 | Central Avenue Safety Improvements | Reduces lanes from four to three, and includes a center lane, bike lanes, and various pedestrian safety countermeasures. | Central Avenue between Main Street/Pacific Avenue and Sherman Street/Encinal Avenue | 240347 | 07/2017 | 06/2019 | 12.3 | 0.2 | PEER | City of Alameda | City of Alameda | Added agreement number. |
| 2 | R | N | TBD | IQA | 123 | Var | Var | Multi-Modal Corridor Improvements | Multi-modal corridor study to identify develop an implementable multimodal improvement plan for the San Pablo Avenue corridor | Along San Pablo Avenue from Oakland through Alameda County and, in partnership with Contra Costa County, extending up to approximately Hilltop Mall. | TBD | 09/2019 | 03/2021 | TBD | TBD | TBD | ACTC | ACTC/ jurisdictions | Adjusted dates; need to initiate agreement. |
| 3 | R | N | 04-2695 | IQA | 262 | 0.0 | 1.1 | Improve traffic operations | Improvements to SR 262 (Mission Blvd.) and along I-880 and I-680 in the vicinity of the SR 262 Interchanges | SR 262 between I-680 and I-880, along I-880 between Fremont Blvd and Dixon Landing Road, and I-680 between Auto Mall Parkway and Scott Creek Road | 230110 | 05/2018 | 09/2020 | 740.0 | 85.0 | PSR | ACTC | ACTC | Cost and date adjustments |
| 4 | R | N | TBD | IQA | 580 | 16.7 | 16.7 | Improve traffic operations | I/C reconfiguration upgrade | Hacienda Drive I/C @ I-580 | 17-01-0038 | 12/2018 | 12/2019 | 23.0 | 4.0 | PSR-PDS | ACTC/ Dublin/ Pleasanton | ACTC/ Dublin | Updated initiation/completion dates, postmile and RTP ID. |
| 5 | R | N | TBD | IQA | 80 | Var | Var | Improve traffic operations | Conversion of HOV lanes to Express Lanes | SFOBB approach on I-80, I-880 & I-580; SFOBB Direct Connector in Oakland to SR-4; SR-4 to Carquinez Bridge Toll Plaza | 230656 230657 240741 | 07/2018 | 12/2019 | 70.2 | 19.7 | PSR-PDS | ACTC MTC CCTA | ACTC MTC CCTA | |
| 6 | R | N | TBD | IQA | 880 | 20.3 | 25.5 | Improve traffic operations | Extend NB HOV /HOT lanes | From Hacienda to north of Washington and north of Washington to Hegenberger in San Leandro | 230088 240741 | 07/2019 | 06/2020 | 325.0 | 80.0 | PSR-PDS | ACTC MTC | ACTC MTC | |
| 7 | R | N | TBD | IQA | 185 | 0.0 | 2.9 | Streetscape | Streetscape improvement (Phase II) | East 14th St from 162nd Ave to SR-238 O/C | TBD | 11/2016 | 06/2017 | 7.5 | 1.5 | PSR-PDS | Alameda County PWA | Alameda County PWA | Relinquishment completed. Are PID dates correct? If complete, remove form list. |
| 8 | R | N | TBD | IQA | 185 | 1.2 | 3.7 | Streetscape | Streetscape improvement (Phase III) | Mission Blvd SR-238 O/C to Hayward City Limits | TBD | 06/2018 | 12/2019 | 6.5 | 1.5 | PSR-PDS | Alameda County PWA | Alameda County PWA | Relinquishment completed. Are PID dates correct? |

Note: Projects are **NOT** listed in order of priority.

DRAFT Alameda County Three-Year PID Work Plan (FYs 2019/20 2020/21, and 2021/22)

| Index | "SHA" or "R" (Reimbursement) | Executed Reimbursement Agreement (Y/N) | Agreement Number | Lead/ QA/ IQA | Route | Begin Postmile | End Postmile | Purpose & Need | Description | Location | RTP Project Number | Initiation Date (MM/DD/YYYY) | Estimated PID Completion Date (MM/YYYY) | Capital Cost (\$M) | Support Cost (\$M) | Type of PID | Project Sponsor | Implementing Agency | Sponsor Status Update/ Notes (Remove from PID List, Change Year, Etc.) |
|---|------------------------------|--|------------------|---------------|-------|----------------|--------------|---|--|---|--------------------|------------------------------|---|--------------------|--------------------|-------------|--------------------|---------------------|--|
| PROPOSED FY 2019/20 WORK PLAN (includes Prior Years), continued | | | | | | | | | | | | | | | | | | | |
| 9 | R | N | TBD | IQA | 580 | R29.4 | R31.4 | Improve traffic operations | Ramp modifications Strobridge/Castro Valley I/C | Strobridge/Castro Valley | TBD | 11/2018 | 07/2020 | 20.0 | 2.0 | PSR-PDS | Alameda County PWA | Alameda County PWA | ACPWA working with Caltrans on R/W issues. Are PID dates correct? |
| 10 | R | N | TBD | IQA | 84 | 6.9 | 10.8 | Relinquish from Caltrans to Fremont per MOU | Improve to a state of good repair and upgrade to a "complete street" | In Fremont, along Thornton Av (880 to Fremont), Fremont Bl (Thornton to Peralta), Peralta Bl (Fremont to Mowry), and Mowry Av (Peralta to SR 262/Mission) | TBD | 07/2016 | 08/2019 | 11.3 | 1.7 | PSSR | Fremont | Fremont | No updates submitted |
| 11 | R | N | TBD | IQA | 880 | TBD | TBD | Bike Ped | New Bike/Ped Overcrossing, linking Warm Springs BART, Business Center, and Bay Trail | Between Fremont Blvd South I/C and Warren Ave I/C | TBD | 07/2018 | 09/2019 | 32.0 | 9.0 | PSR-PDS | Fremont | Fremont | No updates submitted |
| 12 | R | N | TBD | IQA | 880 | 16.7 | 18.2 | Improve traffic operations | I-880 Interchanges (Winton Avenue and A Street) | Hayward | 240037 | 07/2018 | 06/2019 | 80.0 | 25.0 | PSR-PDS | Hayward | ACTC | Reviewed - no changes. |
| 13 | R | N | TBD | IQA | 580 | 9.2 | 10.2 | Improve traffic operations | I/C modification | Vasco Rd I/C in Livermore | 21100 | 04/2019 | 06/2021 | 27.5 | 5.0 | PSR-PDS | Livermore | Livermore | Changed Initiation Date and estimated Completion Date |
| 14 | R | N | TBD | IQA | 680 | 15.3 | 15.3 | Improve traffic operations | I/C reconfiguration | Sunol Boulevard I/C in Pleasanton | TBD | 05/2018 | 05/2019 | 12.0 | 1.2 | PSR-PDS | Pleasanton | Pleasanton | Updated dates from TBD. Updated costs. |
| 15 | R | N | 04-2680 | IQA | 680 | | | Improve traffic operations | Stoneridge Drive Interchange | Stoneridge Drive @ the I-680 NB ramp | 17-01-0042 | 01/2018 | 11/2019 | 2.9 | 0.8 | PEER | Pleasanton | Pleasanton | Updated dates from TBD. Updated costs. |
| - | R | Y | 04-2465 | IQA | 580 | 13.5 | 19.9 | Improve traffic operations | BART to Livermore | From Dublin BART Station to Isabel I/C in Livermore | 240196 | 05/2015 | 12/2018 | 1266.0 | 369.0 | PSR-PDS | BART | BART | Delete Project |
| - | R | N | TBD | IQA | 880 | 14.1 | 14.8 | Improve traffic operations | I-880 Interchanges (Whipple Road-Industrial Parkway Southwest and Industrial Parkway West) | Hayward | 240025 | 12/2017 | 09/2018 | 150.0 | 40.0 | PSR-PDS | Hayward | ACTC | PID completed. Remove from the list. |
| - | R | N | TBD | IQA | 580 | 20.0 | 21.0 | Improve traffic operations | I580/680 Interchange Improvements | Tri Valley | TBD | 12/2018 | 12/2019 | 700.0 | 150.0 | PSR-PDS | ACTC | ACTC | PID completed - to remove from list. |
| - | R | N | TBD | IQA | 680 | R11.0 | R21.8 | Improve traffic operations | NB and SB HOV/HOT lane from Alcosta Blvd. to SR 84 | I-680 between SR 84 Contra-Costa County Line | 230683 | 12/2017 | 09/2018 | 380.0 | 100.0 | PSR-PDS | ACTC | ACTC | PID completed. Remove from the list. |

Note: Projects are **NOT** listed in order of priority.

DRAFT Alameda County Three-Year PID Work Plan (FYs 2019/20 2020/21, and 2021/22)

| Index | "SHA" or "R" (Reimbursement) | Executed Reimbursement Agreement (Y/N) | Agreement Number | Lead/ QA/ IQA | Route | Begin Postmile | End Postmile | Purpose & Need | Description | Location | RTP Project Number | Initiation Date (MM/DD/YYYY) | Estimated PID Completion Date (MM/YYYY) | Capital Cost (\$M) | Support Cost (\$M) | Type of PID | Project Sponsor | Implementing Agency | Sponsor Status Update/ Notes (Remove from PID List, Change Year, Etc.) |
|-------------------------------|---------------------------------|---|------------------|---------------|-------------------|----------------|--------------|---|---|---|--------------------|---------------------------------|--|--------------------|--------------------|-------------|---|-------------------------------|---|
| PROPOSED FY 2020/21 WORK PLAN | | | | | | | | | | | | | | | | | | | |
| 16 | R | N | TBD | IQA | 186 and 238 | Var | Var | Multi-Modal Corridor Improvements | Multi-modal corridor study to identify develop an implementable multimodal improvement plan for the E14th and Mission Blvd corridor. | Along E14th and Mission Blvd from I680/Mission Blvd interchange to San Leandro BART | TBD | 01/2020 | 06/2021 | TBD | TBD | TBD | ACTC | ACTC/ jurisdictions | Dates updated. |
| 17 | R | N | TBD | IQA | 580 | 18.8 | 18.8 | Improve traffic operations | I/C reconfiguration upgrade | Fallon Road / El Charo Road I/C @ I-580 | 17-01- 0038 | 12/2020 | 12/2021 | 18.0 | 4.0 | PSR-PDS | ACTC/ Dublin/ Pleasanton/ Livermore | ACTC/ Dublin | Updated initiation/ completion dates, postmile and RTP ID. |
| 18 | | | | | 880 | | | Multimodal safety and efficiency | Interchange modernization with transit priority and safe bike/ped access | I-880/ Decoto Road Interchange | | 07/2020 | 06/2021 | TBD | TBD | PSR-PDS | Fremont | Fremont/ ACTC/ Caltrans | Add to FY2020/21 Workplan |
| 19 | | | | | 680 | | | Multimodal safety and efficiency | Interchange modernization with safe bike/ped access | I-680/ Mission Blvd (North) Interchange | | 07/2020 | 06/2021 | TBD | TBD | PSR-PDS | Fremont | Fremont/ ACTC/ Caltrans | Add to FY2020/21 Workplan |
| 20 | | | | | 680 | | | Multimodal safety and efficiency | Interchange modernization with safe bike/ped access | I-680/ Washington Blvd Interchange | | 07/2020 | 06/2021 | TBD | TBD | PSR-PDS | Fremont | Fremont/ ACTC/ Caltrans | Add to FY2020/21 Workplan |
| 21 | | | | | 680 | | | Multimodal safety and efficiency | Interchange modernization with safe bike/ped access | I-680/ Auto Mall Parkway Interchange | | 07/2020 | 06/2021 | TBD | TBD | PSR-PDS | Fremont | Fremont/ ACTC/ Caltrans | Add to FY2020/21 Workplan |
| 22 | | | | | 880 | | | Bike/Ped Improvements | New bike/ped overcrossing bridge and trail, linking Warm Springs BART area to Pacific Commons commercial district | I-880 between Fremont Blvd (South) and Auto Mall Parkway | | 07/2020 | 06/2021 | 45.5 | TBD | PSR-PDS | Fremont | Fremont | Add to FY2020/21 Workplan |
| 23 | | | | | 680 | | | Bike/Ped Improvements | New bike/ped overcrossing bridge to connect with Sabercat trail, linking Irvington BART area to Ohlone College area | I-680 between Washington Blvd and Auto Mall Parkway | | 07/2020 | 06/2021 | 55.8 | TBD | PSR-PDS | Fremont | Fremont | Add to FY2020/21 Workplan |
| 24 | | | | | 84 | | | Bike/Ped Safety Improvements | New bike/ped trail through Niles Canyon | Niles Canyon Road | | 07/2020 | 06/2021 | TBD | TBD | PSR-PDS | Alameda County | Alameda County | Add to FY2020/21 Workplan |

Note: Projects are **NOT** listed in order of priority.

DRAFT Alameda County Three-Year PID Work Plan (FYs 2019/20 2020/21, and 2021/22)

| Index | "SHA" or "R" (Reimbursement) | Executed Reimbursement Agreement (Y/N) | Agreement Number | Lead/ QA/ IQA | Route | Begin Postmile | End Postmile | Purpose & Need | Description | Location | RTP Project Number | Initiation Date (MM/DD/YYYY) | Estimated PID Completion Date (MM/YYYY) | Capital Cost (\$M) | Support Cost (\$M) | Type of PID | Project Sponsor | Implementing Agency | Sponsor Status Update/ Notes (Remove from PID List, Change Year, Etc.) |
|-------------------------------|------------------------------|--|------------------|---------------|----------|----------------|--------------|---|---|---|--------------------|------------------------------|---|--------------------|--------------------|-------------|----------------------|----------------------|--|
| PROPOSED FY 2021/22 WORK PLAN | | | | | | | | | | | | | | | | | | | |
| 25 | R | N | TBD | IQA | 580 | Var | Var | Improve traffic operations | I-580 Freeway Corridor Management System | Various | TBD | TBD | TBD | TBD | TBD | PSR-PDS | ACTC | ACTC | |
| 26 | | | TBD | | Route 84 | | | Improve transit connection | Project adds a freeway median bus transit station with vertical circulation connection to new Capitol Corridor train station and existing park and ride lot. Serves Dumbarton Express bus and private shuttles. | Located at border of Fremont and Newark near Ardenwood Park and Ride Lot. | | TBD | TBD | TBD | TBD | TBD | Capitol Corridor JPB | TBD | |
| 27 | R | N | TBD | IQA | 80 | 3.5 | 4.0 | Improve traffic operations | Widen I-80 Eastbound Powell Street on- and off-ramps and I-80 Westbound on-ramp to improve transit access. | Emeryville | 230108 | TBD | TBD | 3.0 | 1.0 | PSR-PDS | Emeryville | Emeryville/ Caltrans | |
| 28 | R | N | TBD | IQA | 92 | R4.1 | R4.9 | Improve traffic operations | Clawiter I/C modification | Hayward | 21093 | TBD | TBD | 45.0 | 7.0 | PSR-PDS | Hayward | Hayward | |
| 29 | R | N | TBD | IQA | 880 | 17.6 | 18.3 | Improve traffic operations | Add I-880 NB & SB auxiliary lanes Paseo Grande St. I/C to Winton I/C | From West A St. I/C to Winton I/C in Hayward | 230052 | TBD | TBD | 27.5 | 5.0 | PSR-PDS | Hayward/ ACTC | Hayward | Remove these? Aux lanes included in I-880 I/Cs at Winton Ave & A St - a stand-alone project is not required. Hayward to confirm. |
| 30 | R | N | TBD | IQA | 880 | 13.7 | 14.5 | Improve traffic operations | Add I-880 NB & SB auxiliary lanes Whipple Road to Industrial Pkwy West | From Whipple Road to Industrial Pkwy West, Hayward | 230054 | TBD | TBD | 15.0 | 4.5 | PSR-PDS | Hayward/ ACTC | Hayward | |
| 31 | R | N | TBD | IQA | 880 | 10.4 | 13.0 | Improve traffic operations | I-880 auxiliary lanes, Dixon Landing to Alvarado-Niles | Fremont, Newark, Union City | TBD | TBD | TBD | 20.0 | 5.0 | PSR-PDS | Hayward/ ACTC | ACTC Caltrans | |
| 32 | R | N | TBD | IQA | 980 | TBD | TBD | Improve function of I-980 and surface streets for all modes | Study potential reconfigurations of I-980 , including an at grade boulevard option | I-980 between I-880 and I-580 | TBD | TBD | TBD | TBD | TBD | PSR-PDS | Oakland | Caltrans/ Oakland | |
| 33 | R | N | TBD | IQA | 880 | 26.4 | 26.6 | Bike/Ped Improvements | Study a bike/ped facility crossing over 880 on 66th Ave/Zhone Way, with potential realignments of access ramps to 880. | 66th Avenue/Zhone Way between San Leandro St and Oakport St | 17010-0011 | TBD | 1 year | 10.0 | 2.0 | PSR-PDS | Oakland | Caltrans/ Oakland | |
| | | | | | | | | | | | | | | | | | | | |

Note: Projects are **NOT** listed in order of priority.



Memorandum

5.3

1111 Broadway, Suite 800, Oakland, CA 94607

• PH: (510) 208-7400

• www.AlamedaCTC.org

: May 2, 2019

TO: Alameda County Technical Advisory Committee

FROM: Vivek Bhat, Director of Programming and Project Controls
Jacki Taylor, Senior Program Analyst

SUBJECT: Transportation Fund for Clean Air (TFCA) FY 2019-20 Program Update

Recommendation

ACTAC is requested to review the summary of the applications received to date for Fiscal Year (FY) 2019-20 Transportation Fund for Clean Air (TFCA) funding. This item is for information only.

Summary

A call for projects was released March 25, 2019 for Fiscal Year (FY) 2019-20 Transportation Fund for Clean Air (TFCA) County Program Manager funding and applications were due on April 12th. Attachment A provides a summary of the applications received to date from eligible applicants. Of the \$2.43 million of TFCA funding available for projects, a total of \$2.79 million has been requested. A FY 2019-20 TFCA programming recommendation is scheduled to be brought to the Commission as part of the 2020 Comprehensive Investment Plan (CIP) in June 2019. If any FY 2019-20 TFCA funding remains unprogrammed following the adoption of the 2020 CIP, staff will continue to work with ACTAC members to identify eligible and cost-effective TFCA projects until all available funds are programmed.

Background

TFCA funding is generated by a four dollar vehicle registration fee collected by the Bay Area Air Quality Management District (Air District). Eligible projects are to result in the reduction of motor vehicle emissions and are to achieve "surplus" emission reductions beyond what is currently required through regulations, ordinances, contracts, or other legally binding obligations. TFCA eligible projects include shuttles, bicycle lanes and lockers, signal timing and trip reduction programs. As the TFCA Program Manager for Alameda County, the Alameda CTC is responsible for annually programming 40 percent of the four dollar vehicle registration fee that is collected in Alameda County for this program. Five percent of new revenue is set aside for the Alameda CTC's administration of the TFCA program. Per the Alameda CTC TFCA Guidelines, 70 percent of the available funds are to be allocated to the

cities/county based on population, with a minimum of \$10,000 to each jurisdiction. The remaining 30 percent of funds are to be allocated to transit-related projects on a discretionary basis. A jurisdiction may borrow against its projected future share in order to receive more funds in the current year, which can help facilitate the required annual programming of all available funds. Projects proposed for TFCA funding are required to meet the eligibility and cost-effectiveness requirements of the TFCA program.

A call for projects was released March 24, 2019 for Fiscal Year (FY) 2019-20 Transportation Fund for Clean Air (TFCA) County Program Manager funding and applications were due on April 19th. Attachment A provides a summary of the applications received to date from eligible applicants. Of the \$2.43 million of TFCA funding available for projects, a total of \$2.79 million has been requested.

Next Steps

Staff will continue to review the applications received for TFCA eligibility and cost effectiveness and a FY 2019-20 TFCA programming recommendation is scheduled to be brought to the Commission as part of the 2020 Comprehensive Investment Plan (CIP) in June 2019.

November 2019 is the Air District's anticipated deadline for counties to submit an approved program of projects for FY 2019-20 funding. Once the deadline passes, any funds that remain un-programmed by the Commission may be programmed directly by the Air District. If a full program of projects cannot be identified in time to be included in the 2020 CIP, Staff will continue to work with ACTAC Representatives to identify and evaluate potential projects until all available funds are programmed. If needed, a second, stand-alone FY 2019-20 program recommendation will be brought to the Commission for approval in summer/fall 2019 ahead of the Air District's programming deadline, anticipated in November 2019.

Fiscal Impact: TFCA funding is made available by the Air District. Costs associated with TFCA projects and the Alameda CTC's administration of the TFCA program are included in the Alameda CTC's 2019-20 budget.

Attachment:

- A. Summary of FY 2019-20 TFCA applications received to date

FY 2019-20 TFCA Call for Projects - Applications Received

| Index | Sponsor | Title | Description | Total Cost | TFCA Request |
|--------------|-------------|---|---|----------------------|---------------------|
| 1 | Alameda | Otis Drive Traffic Calming and Safety Improvement Project | The project Converts the four lane street to a three lane street, installs buffered bike lanes where no bicycle facilities currently exist, provides additional marked crosswalks, flashing beacons and painted bulb-outs, moves the bus stops from the near side to the far side of intersections and removes a low ridership bus stop, extends red curbs, installs turn pockets, improves signal timings and installs street trees. | \$ 899,000 | \$ 300,000 |
| 2 | Alameda CTC | Countywide TDM Program | The Alameda CTC's TDM program includes Guaranteed Ride Home (GRH); IBike, carpool and transit promotional campaigns and Bike Safety Education classes. Request is for FY 2020-21 operations. | \$ 446,000 | \$ 340,000 |
| 3 | BART | West Oakland BART Station Bike Locker Expansion | Project will purchase and install 40 additional BikeLink shared use electronic bike lockers at the West Oakland BART station. | \$ 160,000 | \$ 100,000 |
| 4 | BART | 19Th St. Oakland BART Bike Station | The 19th St/Oakland BART Bike Station will be a custom-designed and custom-built secure bike parking facility at 2029 Broadway on a parcel owned by BART. It will be attended from 7 am to 8 pm, and will have a section where users will be able to self-park and retrieve their bicycles outside of the operating hours of the attended section. It will securely park up to 400 bicycles, including oversized and cargo bikes; and it will have a small retail component to help offset operating costs. It will also incorporate art. TFCA funding would go towards capital costs of bike parking facility. | \$ 10,900,000 | \$ 675,000 |
| 5 | Dublin | Tassajara Road Arterial Management Project | traffic signal upgrade and signal coordination along a major corridor within the City limits (Tassajara Road-Santa Rita Road). The proposed project will upgrade signal controllers at 4 intersections; upgrade Battery Backup Units at 4 intersections, MMU at 9 intersections, video detection, and 1 GPS clock at the I-580 ramp for signal synchronization between City signals and signals maintained by the City of Pleasanton and Caltrans. | \$ 183,800 | \$ 183,800 |
| 6 | LAVTA | Route 10R Operations | The 10R provides weekday feeder bus service from Livermore Transit Center/ACE to East Dublin/Pleasanton BART station via Downtown Pleasanton and Hacienda Business Park. Request is for FYs 2020-21 & 2020-22 operations. | \$ 5,881,000 | \$ 500,000 |
| 7 | Oakland | Broadway Shuttle | The Broadway Shuttle is a downtown transit circulator linking major destinations along the Broadway spine from uptown to Jack London Square. The service, which operates Monday-Friday 7 AM-10 PM with 12/15 minute headways, provides circulation among the greater downtown district and provides "last mile" service connecting regional transit stations (BART, SF Bay Ferry, Amtrak Capitol Corridor and AC Transit Uptown Transit Center) to homes and workplaces. Request is for FY 2020-21 operations. | \$ 1,005,000 | \$ 265,000 |
| 8 | Union City | Union City IDEA Grant Traffic Signal Control Improvements | Deploy Adaptive Signal Control Technology (ASCT) at 13 intersections along two major arterial corridors: Union City Boulevard and Decoto Road. Deploy Automated Traffic Signal Performance Measures (ATSPM) at 35 intersections. ASCT and ATSPM implementation will require deployment of new local controllers/software, communications system upgrade and new Central Signal Management System(CSMS). Deploy bicycle lane detection at 24 intersections and deploy passive pedestrian detection at four intersections (16 crosswalks). | \$ 1,070,000 | \$ 360,500 |
| 9 | Pleasanton | Pleasanton Citywide Trip Reduction Program | The Program consists of employer, residential and school-based programs which encourage commute alternative use by planning and executing events or incentive/awareness campaigns. Employer and residential programs include carpool incentives, Try-Transit and bike campaigns. Rides to School includes Walk to School, Safety Valet, Bike to School, Try Transit to School and carpool programs. | \$ 142,000 | \$ 67,122 |
| Total | | | | \$ 20,686,800 | \$ 2,791,422 |

TFCA Fund Estimate for FY 2019-20 Cycle

\$ 2,426,000

Unrequested Balance

\$ (365,422)

This page intentionally left blank



Memorandum

5.4

1111 Broadway, Suite 800, Oakland, CA 94607

• 510.208.7400

• www.AlamedaCTC.org

DATE: May 2, 2019

TO: Alameda County Technical Advisory Committee

FROM: Vivek Bhat, Director of Programming and Project Controls
Jacki Taylor, Senior Program Analyst

SUBJECT: Alameda County Federal Inactive Projects

Recommendation

ACTAC is requested to review the Alameda County federal inactive projects. This item is for information only.

Summary

Federal regulations require agencies receiving federal funds to invoice against each federal obligation at least once every six months. Caltrans maintains a list of inactive obligations and projects are added to the list when there has been no invoice activity for six months. If Caltrans does not receive an invoice during the subsequent six-month period the project's federal funds will be at risk for deobligation by the Federal Highway Administration (FHWA). ACTAC is requested to review the latest inactive projects list (Attachment A), which identifies the federal funds at risk and the actions required to avoid deobligation. The report includes two tables, the second is for projects with remaining balances less than \$50,000. Agencies with inactive projects identified in the attached report are to work directly with their Caltrans District Local Assistance Engineer (DLAE) to clear the inactive invoicing status and provide periodic status updates to Alameda CTC programming staff until the project is removed from the Caltrans report.

Background

In response to FHWA's requirements for processing inactive obligations, Caltrans Local Assistance proactively manages federal obligations, as follows:

- If Caltrans does not receive an invoice for more than six months, the project will be deemed "inactive" and added to the list of Federal Inactive Obligations. The list is posted on the Caltrans website and updated weekly:
<http://www.dot.ca.gov/hq/LocalPrograms/Inactiveprojects.htm>.
- Caltrans will notify local agencies the first time a project becomes inactive.

- If Caltrans does not receive an invoice within the following six months (12 months without invoicing), Caltrans will deobligate the unexpended balances. The deobligation process is further detailed in [FHWA's Obligation Funds Management Guide](#), which states that project costs incurred after deobligation are not considered allowable costs for federal participation and are therefore ineligible for future federal reimbursement.

It is the responsibility of local agencies to work in collaboration with their DLAE to ensure projects are removed from the inactive list and avoid deobligation. Additionally, per the Metropolitan Transportation Commission (MTC) Regional Project Delivery Policy, MTC Resolution 3606, *"Agencies with projects that have not been invoiced against at least once in the previous six months or have not received a reimbursement within the previous nine months have missed the invoicing /reimbursement deadlines and are subject to restrictions placed on future regional discretionary funds and the programming of additional federal funds in the federal TIP until the project receives a reimbursement."* Thus, agencies with inactive projects must resolve their inactive status promptly to avoid deobligation and restrictions on future federal funds. MTC actively monitors inactive obligations and may periodically reach out directly project sponsors for status updates.

Next Steps

Agencies with inactive projects identified in the attached report are to work with directly with their Caltrans District Local Assistance Engineer (DLAE) to clear the inactive invoicing status. Agencies are requested to also provide periodic status updates to Alameda CTC programming staff until the project is removed from the Caltrans report. Email status updates to Jacki Taylor, JTaylor@alamedactc.org.

Fiscal Impact: There is no fiscal impact associated with the requested item.

Attachment:

- A. Alameda County Federal Inactive Projects List, dated 4/26/19

Updated 04/26/2019

| Project No. | Status | Agency Action Required | Prefix | Agency | Description | Potential Deobligation Date | Latest Date | Authorization Date | Last Expenditure Date | Last Action Date | Total Cost | Federal Funds | Expenditure Amount | Unexpended Balance |
|-------------|----------|---|----------|--|---|-----------------------------|-------------|--------------------|-----------------------|------------------|---------------|---------------|--------------------|--------------------|
| 5014040 | Inactive | Carry over project. Provide status update to DLAE immediately. | TCSP | Alameda | INTERSECTIONS OF PARK ST/LINCOLN AVE AND PARK ST/BUENA VISTA AVE, PEDESTRIAN SAFETY TRANSPORTATION IMPROVEMENTS | 3/7/2018 | 3/7/2017 | 3/22/2013 | 3/7/2017 | 3/7/2017 | \$ 319,633 | \$ 282,885 | \$ 253,486 | \$ 29,399 |
| 6480006 | Inactive | Carry over project. Provide status update to DLAE immediately. | STPCML | Alameda County Transportation Commission | ALAMEDA COUNTY- COUNTYWIDE, IMPLEMENT SR2S PROGRAM TO ENABLE AND ENCOURAGE CH | 3/28/2019 | 3/28/2018 | 10/24/2013 | 3/28/2018 | 3/28/2018 | \$ 6,409,050 | \$ 5,673,065 | \$ 5,335,999 | \$ 337,066 |
| 5057042 | Inactive | Carry over project. Provide status update to DLAE immediately. | STPL | Berkeley | IN BERKELEY: PEDESTRIAN ACCESS THROUGHOUT THE BERKELEY MARINA. CONSTRUCT CLASS I MULTI-USE TRAIL | 1/24/2019 | 1/24/2018 | 1/24/2018 | | 1/24/2018 | \$ 599,698 | \$ 483,925 | \$ - | \$ 483,925 |
| 5106008 | Inactive | Carry over project. Invoice under review by Caltrans. Monitor for progress. | SRTSL | Emeryville | SAN PABLO AVE (SR 123) BETWEEN 43RD & 47TH AVE., PEDESTRIAN WALKWAY | 1/19/2018 | 1/19/2017 | 5/4/2012 | 1/19/2017 | 1/19/2017 | \$ 617,290 | \$ 617,290 | \$ 392,580 | \$ 224,710 |
| 5050044 | Inactive | Invoice under review by Caltrans. Monitor for progress. | CMLNI | Hayward | DOWNTOWN HAYWARD AND POSSIBLE ADDITIONAL LOCATIONS CAR SHARING SERVICES | 6/22/2019 | 6/22/2018 | 12/2/2016 | 6/22/2018 | 6/22/2018 | \$ 245,880 | \$ 200,480 | \$ 1,891 | \$ 198,589 |
| 5012110 | Inactive | Final invoice under review by Caltrans. Monitor for progress. | STPL | Oakland | CITYWIDE AC OVERLAY AC PAVEMENT | 12/27/2018 | 12/27/2017 | 2/22/2010 | 12/27/2017 | 2/20/2019 | \$ 5,160,262 | \$ 4,051,851 | \$ 2,909,018 | \$ 1,142,833 |
| 5012125 | Inactive | Carry over project. Provide status update to DLAE immediately. | STPL | Oakland | CITYWIDE STREETS - SEE STATE COMMENT SCREEN FOR ELIGIBLE LOCATIONS, ROAD REHAB & DIETING, BIKE LANES, AND ADA UPGRADES | 8/25/2018 | 8/25/2017 | 6/8/2014 | 8/25/2017 | 8/25/2017 | \$ 5,568,845 | \$ 4,422,000 | \$ 4,077,358 | \$ 344,642 |
| 5012119 | Inactive | Carry over project. Provide status update to DLAE immediately. | HSIPL | Oakland | MARKET ST BETWEEN 45TH AVE. & ARLINGTON AVE., TRAFFIC SIGNALS, RESTRIPIING & RECONFIGURE INTERSEC | 12/21/2018 | 12/21/2017 | 10/22/2013 | 12/21/2017 | 12/21/2017 | \$ 1,089,347 | \$ 643,700 | \$ 566,203 | \$ 77,497 |
| 5012117 | Inactive | Carry over project. Final invoice under review by Caltrans. Monitor for progress. | HSIPL | Oakland | ON W. MACARTHUR BLVD. BETWEEN MARKET ST. & TELEGRAPH AVE., MODIFY TRAFFIC SIGNALS | 4/26/2018 | 4/26/2017 | 10/22/2013 | 4/26/2017 | 4/26/2017 | \$ 1,012,927 | \$ 699,400 | \$ 659,400 | \$ 40,000 |
| 5014042 | Future | Submit invoice to District by 08/20/2019 | ATPL | Alameda | JEAN SWEENEY OPEN SPACE BETWEEN WEBSTER ST AND SHERMAN ST AND ALONG ATLANTIC AVENUE BETWEEN CONSTITUTION WAY AND WEBSTER AVENUE CROSS | 7/3/2019 | 7/3/2018 | 3/15/2017 | 7/3/2018 | 7/3/2018 | \$ 2,414,730 | \$ 1,882,000 | \$ 1,842,000 | \$ 40,000 |
| 5933109 | Future | Submit invoice to District by 08/20/2019 | CML | Alameda County | VARIOUS LOCATIONS PURCHASE OF ELECTRIC VEHICLES | 8/24/2019 | 8/24/2018 | 7/5/2011 | 8/24/2018 | 8/24/2018 | \$ 4,766,131 | \$ 2,707,472 | \$ 2,565,960 | \$ 141,512 |
| 32L0520 | Future | Submit invoice to District by 08/20/2019 | ER | Alameda County | CROW CANYON ROAD MM 6.08 & 6.21. UNINCORPORATED ALAMEDA COUNTY. . PRELIMINARY ENGINEERING DESIGN | 7/4/2019 | 7/4/2018 | 7/4/2018 | | 7/4/2018 | \$ 106,200 | \$ 94,000 | \$ - | \$ 94,000 |
| 5933129 | Future | Invoice under review by Caltrans. Monitor for progress. | HSIPL | Alameda County | REDWOOD RD, LAKE CHABOT RD., MIRAMAR AVE., KENT AVE., GRANT AVE., BLOSSOM WAY, HEYER AVE BULB OUT AND FLASHING BEACON | 9/25/2019 | 9/25/2018 | 12/4/2014 | 9/25/2018 | 9/25/2018 | \$ 2,055,427 | \$ 1,104,333 | \$ 1,026,368 | \$ 77,965 |
| 6480017 | Future | Submit invoice to District by 08/20/2019 | ATCMTDL | Alameda County Transportation Commission | IN THE CITY OF OAKLAND, WITHIN THE PORT OF OAKLAND'S SEAPORT FACILITIES AND ADJACENT AREA IN THE CITY OF OAKLAND ALONG WEST GRAND AVE., MARITIME HARBOR | 8/28/2019 | 8/28/2018 | 8/28/2018 | | 8/28/2018 | \$ 21,568,000 | \$ 9,720,000 | \$ - | \$ 9,720,000 |
| 6480013 | Future | Submit invoice to District by 08/20/2019 | STPCMLNI | Alameda County Transportation Commission | COUNTY WIDE- APPROXIMATELY 300 PUBLIC SCHOOL ALAMEDA COUNTY SAFE ROUTES TO SCHOOL PROGRAM OUTREACH AND EDUCATION. WORK PROGRAM IS FOCUSED ON | 8/2/2019 | 8/2/2018 | 6/15/2017 | 8/2/2018 | 8/2/2018 | \$ 9,462,000 | \$ 8,372,000 | \$ 598,519 | \$ 7,773,481 |
| 5057043 | Future | Submit invoice to District by 08/20/2019 | ATPL | Berkeley | NEAR LECONTE ELEMENTARY SCHOOL ALONG SHATTUCK AVE, AT WARD, STUART AND RUSSELL STREETS AND MERGE TO ADELINE STREET CONSTRUCT BULB-OUTS. | 7/17/2019 | 7/17/2018 | 9/14/2016 | 7/17/2018 | 7/17/2018 | \$ 510,567 | \$ 452,004 | \$ 23,828 | \$ 428,176 |

Alameda County Inactive Obligations
Updated by Caltrans, 4/26/19

Updated 04/26/2019

| Project No. | Status | Agency Action Required | Prefix | Agency | Description | Potential Deobligation Date | Latest Date | Authorization Date | Last Expenditure Date | Last Action Date | Total Cost | Federal Funds | Expenditure Amount | Unexpended Balance |
|-------------|--------|---|--------|-------------|---|-----------------------------|-------------|--------------------|-----------------------|------------------|--------------|---------------|--------------------|--------------------|
| 5012143 | Future | Invoice under review by Caltrans. Monitor for progress. | ATPL | Oakland | TELEGRAPH AVENUE BETWEEN 20TH STREET AND 41ST STREET INSTALLATION OF DEDICATED BICYCLE FACILITIES, PEDESTRIAN CROSSINGS, AND TRANSIT | 8/21/2019 | 8/21/2018 | 4/6/2017 | 8/21/2018 | 8/21/2018 | \$ 877,000 | \$ 877,000 | \$ 183,944 | \$ 693,056 |
| 5012135 | Future | Invoice under review by Caltrans. Monitor for progress. | ATPL | Oakland | IN CITY OF OAKLAND, NEAR FREMONT HIGH SCHOOL AT THE INTERSECTION OF HIGH STREET, COURTLAND AVE AND YGNACIO ST. INSTALL IMPROVEMENTS FOR | 8/7/2019 | 8/7/2018 | 9/12/2016 | 8/7/2018 | 8/7/2018 | \$ 1,128,000 | \$ 1,128,000 | \$ 724,788 | \$ 403,212 |
| 5012136 | Future | Invoice under review by Caltrans. Monitor for progress. | ATPL | Oakland | IN OAKLAND: AT THE INTERSECTIONS OF: (1) 35TH AVE. @ WISCONSIN ST, (2) PLEASANT ST @ BOSTON AVE, (3) SCHOOL ST. @ BOSTON AVE, (4) SCHOOL ST @ COOLIDGE AVE, (5) | 8/7/2019 | 8/7/2018 | 7/27/2016 | 8/7/2018 | 8/7/2018 | \$ 1,466,091 | \$ 1,236,000 | \$ 846,040 | \$ 389,960 |
| 5012152 | Future | Invoice under review by Caltrans. Monitor for progress. | HSIPL | Oakland | HIGH STREET FROM SAN LEANDRO STREET TO I-580 CONSTRUCT CROSSING ENHANCEMENTS, SIGNAL PLACEMENT IMPROVEMENTS, AND NEW PED COUNTDOWN HEADS | 9/20/2019 | 9/20/2018 | 10/13/2017 | 9/20/2018 | 9/20/2018 | \$ 485,000 | \$ 365,506 | \$ 13,705 | \$ 351,801 |
| 5012142 | Future | Submit invoice to District by 08/20/2019 | HSIPL | Oakland | TELEGRAPH AVENUE BETWEEN 29TH AND 45TH ST. STRIPING AND SIGN ROAD DIET WITH BUFFERED BIKE LANE, SIGNAL MODIFICATION, CROSSWALK ENHANCEMENTS. | 8/21/2019 | 8/21/2018 | 10/14/2016 | 8/21/2018 | 8/21/2018 | \$ 221,400 | \$ 199,260 | \$ 77,704 | \$ 121,556 |
| 5012141 | Future | Invoice under review by Caltrans. Monitor for progress. | HSIPL | Oakland | MARKET ST. BETWEEN 4TH AND 7TH ST. & 18TH TO 19TH ST. INTERSECTION AT MARKET ST AT 14TH, 16, AND 21ST STREET, SAN PABLO AVE AT 32TH, BROCKHURST. | 8/21/2019 | 8/21/2018 | 10/21/2016 | 8/21/2018 | 8/21/2018 | \$ 204,000 | \$ 183,600 | \$ 103,502 | \$ 80,098 |
| 5012122 | Future | Submit invoice to District by 08/20/2019 | HP21L | Oakland | IN OAKLAND: ADJACENT TO LAKE MERITT PROJECT AREA BORDERED BY HARRISON ST, GRAND AVE., LAKESHORE AVE., AND LAKESIDE DRIVE. RECONFIGURE ROADWAYS | 7/3/2019 | 7/3/2018 | 5/23/2016 | 7/3/2018 | 7/3/2018 | \$ 1,547,945 | \$ 827,758 | \$ 787,758 | \$ 40,000 |
| 5101029 | Future | Submit invoice to District by 08/20/2019 | BPMP | Pleasanton | CITY OF PLEASANTON: 5 BRIDGES, 33C0454, 33C0099, 33C0453, 33C0461, AND 33C0462. BRIDGE PREVENTIVE MAINTENANCE PROJECT | 9/6/2019 | 9/6/2018 | 12/19/2015 | 9/6/2018 | 9/6/2018 | \$ 151,962 | \$ 134,532 | \$ 83,341 | \$ 51,191 |
| 5041046 | Future | Submit invoice to District by 08/20/2019 | HSIPL | San Leandro | IN SAN LEANDRO AT THE INTERSECTION OF EAST 14 TH STREET (SR 185) AND JOAQUIN AVE. UPGRADE TRAFFIC SIGNALS, INSTALL PED. SIGNAL PHASING. | 9/4/2019 | 9/4/2018 | 10/13/2017 | 9/4/2018 | 9/4/2018 | \$ 66,500 | \$ 59,850 | \$ 1,393 | \$ 58,457 |
| 5041047 | Future | Submit invoice to District by 08/20/2019 | HSIPL | San Leandro | IN SAN LEANDRO AT THE INTERSECTION OF EAST 14 TH STREET (SR 185) AND 144 TH AVE. INSTALL PEDESTRIAN ACTIVATED SIGNAL. IMPROVE STREET LIGHTING | 9/4/2019 | 9/4/2018 | 10/13/2017 | 9/4/2018 | 9/4/2018 | \$ 36,500 | \$ 32,850 | \$ 1,567 | \$ 31,283 |
| 5354040 | Future | Submit invoice to District by 08/20/2019 | HSIPL | Union City | INTERSECTIONS OF ALVARADO-NILES ROAD AT MANN AVE/UNION SQUARE AND ALVARADO BLVD AT GALAXY WAY.. REMOVE PEDESTRIAN MOUNTED SIGNAL HEADS. INSTALL | 9/27/2019 | 9/27/2018 | 6/13/2017 | 9/27/2018 | 9/27/2018 | \$ 65,000 | \$ 65,000 | \$ 25,175 | \$ 39,825 |

Alameda County Inactive Obligations
Updated by Caltrans, 4/26/19
(Projects with a balance less than \$50,000)

Updated on 04/26/2019

| Project No. | Status | Agency Action Required | Prefix | Agency | Description | Potential Deobligation Date | Latest Date | Authorization Date | Last Expenditure Date | Last Action Date | Total Cost | Federal Funds | Expenditure Amount | Unexpended Balance |
|-------------|----------|---|--------|-------------|---|-----------------------------|-------------|--------------------|-----------------------|------------------|--------------|---------------|--------------------|--------------------|
| 5014040 | Inactive | Carry over project. Provide status update to DLAE immediately. | TC SPL | Alameda | INTERSECTIONS OF PARK ST/LINCOLN AVE AND PARK ST/BUENA VISTA AVE, PEDESTRIAN SAFETY TRANSPORTATION IMPROVEMENTS | | 3/7/2017 | 3/22/2013 | 3/7/2017 | 3/7/2017 | \$ 319,633 | \$ 282,885 | \$ 253,486 | \$ 29,399 |
| 5014042 | Future | Submit invoice to District by 08/20/2019 | AT PL | Alameda | JEAN SWEENEY OPEN SPACE BETWEEN WEBSTER ST AND SHERMAN ST AND ALONG ATLANTIC AVENUE BETWEEN CONSTITUTION WAY AND WEBSTER AVENUE CROSS | 7/3/2019 | 7/3/2018 | 3/15/2017 | 7/3/2018 | 7/3/2018 | \$ 2,414,730 | \$ 1,882,000 | \$ 1,842,000 | \$ 40,000 |
| 5012117 | Inactive | Carry over project. Final invoice under review by Caltrans. Monitor for progress. | HSI PL | Oakland | ON W. MACARTHUR BLVD. BETWEEN MARKET ST. & TELEGRAPH AVE., MODIFY TRAFFIC SIGNALS | | 4/26/2017 | 10/22/2013 | 4/26/2017 | 4/26/2017 | \$ 1,012,927 | \$ 699,400 | \$ 659,400 | \$ 40,000 |
| 5012122 | Future | Submit invoice to District by 08/20/2019 | HP21 L | Oakland | IN OAKLAND: ADJACENT TO LAKE MERITT PROJECT AREA BORDERED BY HARRISON ST, GRAND AVE., LAKESHORE AVE., AND LAKESIDE DRIVE. RECONFIGURE ROADWAYS | | 7/3/2018 | 5/23/2016 | 7/3/2018 | 7/3/2018 | \$ 1,547,945 | \$ 827,758 | \$ 787,758 | \$ 40,000 |
| 5041047 | Future | Submit invoice to District by 08/20/2019 | HSI PL | San Leandro | IN SAN LEANDRO AT THE INTERSECTION OF EAST 14 TH STREET (SR 185) AND 144 TH AVE. INSTALL PEDESTRIAN ACTIVATED SIGNAL, IMPROVE STREET LIGHTING | | 9/4/2018 | 10/13/2017 | 9/4/2018 | 9/4/2018 | \$ 36,500 | \$ 32,850 | \$ 1,567 | \$ 31,283 |
| 5354040 | Future | Submit invoice to District by 08/20/2019 | HSI PL | Union City | INTERSECTIONS OF ALVARADO-NILES ROAD AT MANN AVE/UNION SQUARE AND ALVARADO BLVD AT GALAXY WAY.. REMOVE PEDESTRIAN MOUNTED SIGNAL HEADS, INSTALL | | 9/27/2018 | 6/13/2017 | 9/27/2018 | 9/27/2018 | \$ 65,000 | \$ 65,000 | \$ 25,175 | \$ 39,825 |

Color Key

| | |
|--|---|
| | Project is inactive for more than 12 months and is carried over from last quarter inactive project list. |
| | Invoice / Final invoice is under review |
| | Project is in final voucher process. District can contact Final voucher unit to verify and get an update. |
| | Invoice is returned and agency needs to contact DLAE to resubmit the invoice. |
| | Invoice is overdue. |

This page intentionally left blank