



I-680 Sunol Express Lane Joint Powers Authority Meeting Agenda Monday, November 19, 2018, 9:30 a.m.

Committee Chair: Jerry Thorne, City of Pleasanton
Vice Chair: Lily Mei, City of Fremont
Members: Scott Haggerty, David Haubert,
Lan Diep (Santa Clara Valley
Transportation Authority)

Executive Director: Arthur L. Dao
Staff Liaison: [Elizabeth Rutman](#)
Clerk of the Commission: [Vanessa Lee](#)

Teleconference location: San Jose City Hall, T-1854 (Tower Side)
200 East Santa Clara St., 18th Floor
San Jose, CA 95113

1. Call to Order/Pledge of Allegiance

2. Roll Call

3. Public Comment

4. Consent Calendar

Page/Action

- | | | |
|--|---|---|
| 4.1. Approve the October 8, 2018 I-680 Sunol Smart Carpool Lane Joint Powers Authority (JPA) Meeting Minutes | 1 | A |
|--|---|---|

5. Regular Matters

- | | | |
|--|----|---|
| 5.1. I-680 Southbound Express Lane: Monthly Operations Status Update | 5 | I |
| 5.2. I-680 Sunol Express Lanes (PN 1369.000): Monthly Status Update | 11 | I |
| 5.3. Approve the FY2018-19 First Quarter Financial Report | 17 | A |

6. Committee Member Reports

7. Staff Reports

8. Adjournment

Next Meeting: Monday, January 14, 2019

Notes:

- All items on the agenda are subject to action and/or change by the Commission.
- To comment on an item not on the agenda (3-minute limit), submit a speaker card to the clerk.
- Call 510.208.7450 (Voice) or 1.800.855.7100 (TTY) five days in advance to request a sign-language interpreter.
- If information is needed in another language, contact 510.208.7400. Hard copies available only by request.
- Call 510.208.7400 48 hours in advance to request accommodation or assistance at this meeting.
- Meeting agendas and staff reports are available on the [website calendar](#).
- Alameda CTC is located near 12th St. Oakland City Center BART station and AC Transit bus lines. [Directions and parking information](#) are available online.



Alameda CTC Schedule of Upcoming Meetings:

Commission Chair

Supervisor Richard Valle, District 2

Commission Vice Chair

Mayor Pauline Cutter,
City of San Leandro

AC Transit

Board President Elsa Ortiz

Alameda County

Supervisor Scott Haggerty, District 1
Supervisor Wilma Chan, District 3
Supervisor Nate Miley, District 4
Supervisor Keith Carson, District 5

BART

Director Rebecca Saltzman

City of Alameda

Mayor Trish Spencer

City of Albany

Councilmember Peter Maass

City of Berkeley

Mayor Jesse Arreguin

City of Dublin

Mayor David Haubert

City of Emeryville

Mayor John Bauters

City of Fremont

Mayor Lily Mei

City of Hayward

Mayor Barbara Halliday

City of Livermore

Mayor John Marchand

City of Newark

Councilmember Luis Freitas

City of Oakland

Councilmember At-Large
Rebecca Kaplan
Councilmember Dan Kalb

City of Piedmont

Vice Mayor Teddy Gray King

City of Pleasanton

Mayor Jerry Thorne

City of Union City

Mayor Carol Dutra-Vernaci

Executive Director

Arthur L. Dao

Description	Date	Time
Paratransit Technical Advisory Committee (ParaTAC)	January 8, 2019	9:30 a.m.
Alameda County Technical Advisory Committee (ACTAC)	January 10, 2019	1:30 p.m.
Finance and Administration Committee (FAC)	January 14, 2019	8:30 a.m.
I-680 Sunol Smart Carpool Lane Joint Powers Authority (I-680 JPA)		9:30 a.m.
I-580 Express Lane Policy Committee (I-580 PC)		10:00 a.m.
Planning, Policy and Legislation Committee (PPLC)		10:30 a.m.
Programs and Projects Committee (PPC)		12:00 p.m.
Independent Watchdog Committee (IWC)	January 14, 2019	5:30 p.m.
Alameda CTC Commission Meeting	January 24, 2019	2:00 p.m.
Paratransit Advisory and Planning Committee (PAPCO)	January 28, 2019	1:30 p.m.
Bicycle and Pedestrian Community Advisory Committee (BPAC)	February 21, 2019	5:30 p.m.

All meetings are held at Alameda CTC offices located at 1111 Broadway, Suite 800, Oakland, CA 94607. Meeting materials, directions and parking information are all available on the [Alameda CTC website](http://www.AlamedaCTC.org).



I-680 Sunol Smart Carpool Lane Joint Powers Authority Meeting Minutes Monday, September 10, 2018, 9:30 a.m.

4.1

1111 Broadway, Suite 800, Oakland, CA 94607 • PH: (510) 208-7400 • www.AlamedaCTC.org

1. Call to Order/Pledge of Allegiance

2. Roll Call

A roll call was conducted. All members were present with the exception of Commissioner Diep.

3. Public Comment

There were no public comments.

4. Consent Calendar

4.1. Approve the September 10, 2018 I-680 Sunol Smart Carpool Lane Joint Powers Authority (JPA) meeting minutes

Commissioner Haggerty moved to approve the Consent Calendar. Commissioner Haubert seconded the motion. The motion passed with the following votes:

Yes: Haggerty, Haubert, Mei, Thorne
No: None
Abstain: None
Absent: Diep

5. Regular Matters

5.1 I-680 Southbound Express Lane: Monthly Operations Status Update

Ashley Tam provided an update on the I-680 Southbound Express Lane for the month of August 2018. She covered the average toll trip data and roadway segment speeds and corridor performance information. Ms. Tam also reviewed average speeds and density, and toll rates during operational hours. She concluded the update by reviewing estimated gross toll revenues versus forecasted budget.

Commissioner Haubert asked if staff can analyze if traffic is getting better, worse, or staying the same now that there is multiple years of data. Ms. Tam said staff would provide information at the next meeting.

Commissioner Haggerty asked why the toll trips are declining. Ms. Rutman stated that that the toll rates increased in July 2017 and July 2018 and people may be wondering if it's worth it. She also noted that construction is happening southbound on the median shoulder and it's made some drivers uncomfortable driving next to a barrier.

Commissioner Haggerty stated that the express lanes were not only established to make revenue, but also to improve travel and because of the toll increase we may not be achieving that goal. Ms. Rutman stated that one concern as we look toward 2020 when the southbound lane is a continuous access facility, we're thinking about how to price that lane when it opens.

Commissioner Haggerty suggested having a future agenda item to discuss tolls. Ms. Rutman stated that the graphs show the number of toll trips and suggested to add graphs to provide information on the traffic volume and patterns.

This item was for information only.

5.2. I-680 Sunol Express Lanes (PN 1369.000): Monthly Status Update

Trinity Nguyen presented the I-680 Sunol Express lane status update. She provided an update on recent construction activities and an overview of the project schedule.

On the Sheridan Road Bridge over I-680 project, Commissioner Haggerty asked if anything can be done in the corridor in conjunction with the County to discourage the cut through traffic from affecting the rural roads. Mr. Dao stated that once the northbound lanes are open he suggested metering the ramps downstream.

On SR-84 Widening from South of Ruby Hill Drive to I-680 and SR-84/I-680 Interchange Improvements project, Commissioner Haggerty asked if there's a clause to give a bonus if construction is finished early. Mr. Dao stated the agency will work with the contractors very closely. He stated that the agency will bring on an aggressive team at the Alameda CTC instead of relying on Caltrans.

On I-680 Express Lanes from SR-84 to Alcosta Boulevard, Commissioner Haggerty asked if we have the \$480 Million of the funding. Mr. Dao said that approximately \$24 Million and this project is very competitive for SB 1 funding.

Commissioner Thorne asked if this project will be delayed if we do not receive SB 1 funding. Mr. Dao said that Caltrans will partner with Alameda CTC to deliver this project and they are discussing alternative funding if SB 1 funding goes away.

On SR-262 (Mission Boulevard) Cross Connector project, Commissioner Haggerty asked if we've received \$15 million from Regional Model (RM) 3. Ms. Nguyen stated that the project is currently funded through the scope phase and the RM 3 funding is anticipated in the next phase. Mr. Dao stated that there are adequate Measure BB funds right now and then RM 3 will be used.

This item is for information only.

5.3. Approve the Sunol Smart Carpool Lane Joint Powers Authority Audited Annual Financial Report for the Year Ended June 30, 2018

Ahmad Gharaibeh from Vavrinek, Trine, Day & Co., LLP presented financial highlights of the audited financial report and expressed what is considered to be an unmodified or clean opinion.

Commissioner Haggerty asked if money was put into the reserves. Ms. Reavey stated that funds in the Net Position were approved for set aside during the budget process for reserves.

Commissioner Haggerty asked if the agency will bring back information regarding the amounts to be set aside for risks reserves on both the I-580 and I-680 express lanes to the Board. Mr. Dao said staff will bring this information back to the Board.

Commissioner Haggerty moved to approve this item. Commissioner Haubert seconded the motion. The motion passed with the following votes:

Yes: Haggerty, Haubert, Mei, Thorne
No: None
Abstain: None
Absent: Diep

6. Committee Member Report

There were no committee member reports.

7. Staff Reports

There were no staff reports.

8. Adjournment/ Next Meeting

The next meeting is:

Date/Time: Monday, November 19, 2018 at 9:30a.m.

Location: Alameda CTC Offices, 1111 Broadway, Suite 800, Oakland, CA 94607

This page intentionally left blank



Memorandum

5.1

1111 Broadway, Suite 800, Oakland, CA 94607

• 510.208.7400

• www.AlamedaCTC.org

DATE: November 13, 2018

TO: I-680 Sunol Express Lane Joint Powers Authority

FROM: Ashley Tam, Associate Transportation Engineer
Liz Rutman, Director of Express Lanes Implementation and Operations

SUBJECT: I-680 Sunol Southbound Express Lane (PN 1408.000): Operations Update

Recommendation

This item is to provide an update on the Operation of the I-680 Southbound Express Lane. This item is for information only.

Summary

The purpose of this item is to provide the I-680 Sunol Smart Carpool Lane Joint Powers Authority ("Sunol JPA") with a Monthly Operation Update of the existing I-680 Southbound Express Lane facility for September 2018. See Attachment A for express lane operation limits.

The September 2018 operations report indicates that the express lane facility continues to provide travel time savings and travel reliability along the corridor.

Background

The I-680 Sunol Southbound Express Lane spans approximately 14 miles from SR 84 near Pleasanton to SR 237 in the City of Milpitas. Motorists using the express lane benefit from travel reliability as the express lane optimizes the corridor capacity by providing a choice to drivers: single occupancy vehicles (SOVs) have the option to pay a toll and travel within the express lane, while carpool, clean-air vehicles, motorcycles, and transit vehicles enjoy the benefits of toll-free travel in the express lane. The Alameda CTC, acting as the managing agency for the Sunol JPA, has been operating the express lane facility since it opened to traffic in September 2010. California Highway Patrol (CHP) officers provide enforcement services, and the California Department of Transportation (Caltrans) provides roadway maintenance services through reimbursable service agreements.

An All Electronic Toll (AET) collection method has been employed to collect tolls. Through June 2017, toll rates were calculated based on real-time traffic conditions (speed and

volume) in express and general purposes lanes evaluated every three minutes. Beginning July 1, 2017, in preparation for the construction of the new northbound express lane and conversion of the southbound lane to continuous access, a time-of-day pricing schedule has been in effect with rates changing as frequently as every 15 minutes.

September 2018 Operations Update:

Nearly 77,000 express lane toll trips were recorded during operational hours in September, or 4,100 average daily toll trips. All express lane users typically experience higher speeds and lesser lane densities than the general purpose lanes. Lane density is measured by the number of vehicles per mile per lane and reported as Level of Service (LOS). LOS is a measure of freeway performance based on vehicle maneuverability and driver comfort levels, graded on a scale of A (best) through F (worst).

Table 1 summarizes the express lane speed and LOS at four points in the corridor during the morning commute hours in September. Although comprehensive traffic data is not currently available, daily observation of the corridor via closed circuit television cameras suggests that the express lane continually provides higher speeds and better LOS than the general purpose lanes, particularly during peak commute hours.

Table 1. Speeds and Level of Service in Express Lane
Morning Commute

Express Lane Location	5 AM – 11 AM		8 AM – 9 AM	
	Avg Speed (mph)	Avg Express Lane LOS	Avg Speed (mph)	Avg Express Lane LOS
Andrade Rd	65	C	63	C
Vargas Rd	69	C	65	C
Washington Blvd	58	D	37	F
Mission Blvd SR 262	72	B	69	B

Table 2 presents the maximum posted toll rate to travel the entire southbound express lane corridor and the average toll assessed to non-HOV users.

Table 2. Toll Rate Data

Month	Maximum Posted Toll (Travel Entire Corridor)	Average Assessed Toll (All Trips)
September	\$9.50	\$3.24

The estimated gross revenue generated from the I-680 Sunol express lane thus far in Fiscal Year 2018-19 is \$751,000, while the pro-rated forecast operation budget is \$650,000.

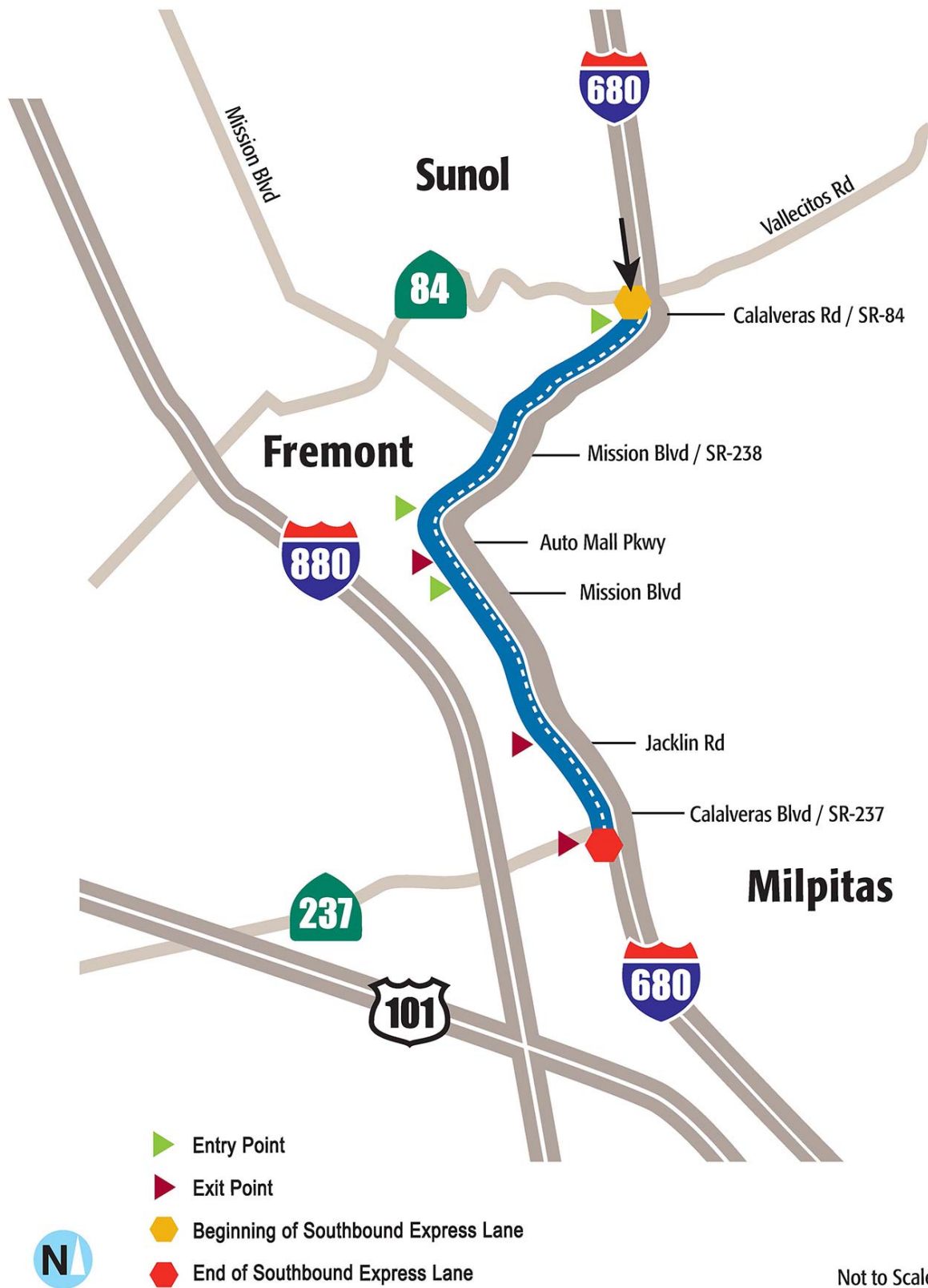
Fiscal Impact: There is no fiscal impact associated with the requested action.

Attachment:

A. I-680 Southbound Express Lane Location Map

This page intentionally left blank

Sunol I-680 Southbound Express Lane Location Map



This page intentionally left blank



Memorandum

5.2

1111 Broadway, Suite 800, Oakland, CA 94607

• 510.208.7400

• www.AlamedaCTC.org

DATE: November 13, 2018

TO: I-680 Sunol Express Lane Joint Powers Authority

FROM: Trinity Nguyen, Director of Project Delivery
Liz Rutman, Director of Express Lanes Implementation and Operations

SUBJECT: I-680 Sunol Express Lanes (PN 1369.000): Monthly Status Update

Recommendation

This item is to provide the Authority with an update on the status of I-680 Sunol Express Lanes – Phase 1 project. This item is for information only.

Summary

The Interstate 680 (I-680) Sunol Express Lanes (EL) Project will provide enhanced mobility for motorists in both the northbound and southbound directions as a combination of two projects, the I-680 Express Lanes (EL) project and the I-680 Southbound Conversion Project. The I-680 Sunol EL project will widen I-680 from SR 237 in Santa Clara County to SR 84 in Alameda County to construct a 14-mile long northbound High Occupancy Vehicle (HOV)/Express Lane in the corridor. The project is being implemented in a phased approach focused on providing immediate operational benefits based on funding availability. The I-680 Sunol Express Lane - Phase 1 (Phase 1) project, constructs an initial 9-mile HOV/Express Lane segment on northbound I-680 between south of Auto Mall Parkway and SR 84. The I-680 Southbound Access Conversion project will convert the existing southbound controlled access tolling configuration to an open access configuration to provide consistency with the new northbound express lane. This conversion has been incorporated into the northbound Phase 1 project.

The purpose of this item is to provide the Commission with a monthly status update on the project development and implementation activities which are either completed or planned for the Phase 1 project.

Background

The I-680 Sunol Express Lanes project will widen northbound I-680 from SR 237 in Santa Clara County to SR 84 in Alameda County to construct a 14-mile long northbound

HOV/Express Lane in the corridor. The project will provide a number of benefits including: 1) enhanced mobility by reducing traffic congestion; 2) reduced travel time and improved travel reliability; and 3) reduced congestion related accidents, thereby enhancing safety. The Express Lane facility will maximize available HOV lane capacity by offering solo drivers the choice to pay an electronic toll to access the lane, while regular carpool/carpool eligible users continue to use the lane at no cost. The Phase 1 project will provide an initial 9-mile segment of new HOV/Express Lane from south of Auto Mall Parkway to SR 84 to eliminate the bottlenecks and alleviate much of the daily traffic congestion.

The I-680 Southbound Express Lane was opened to traffic in September 2010 as a controlled access facility. To be consistent with the new northbound express lane and provide enhanced accessibility for users, the southbound direction will be converted to an open access configuration in conjunction with the Phase 1 project.

The Project Approval and Environmental Document (PA&ED) for the overall project was completed in July 2015. In December 2015, WMH Corporation was selected to prepare the civil design and will continue to provide design support during construction (DSDC). In June 2016, Kapsch TrafficCom Transportation NA, Inc. was selected to provide Toll System Integration Services. In November 2017, Bay Cities Paving & Grading Inc. was awarded the civil construction contract.

Alameda CTC, in partnership with Caltrans, is the implementing agency for preliminary engineering, environmental studies, design, right-of-way acquisition, and utility relocation. For the construction phase, Alameda CTC is the project sponsor and Caltrans is the implementing agency to administer the construction of the Phase 1 project. Attachment A, I-680 Sunol Express Lanes Progress Update, provides the current implementation schedule and delivery milestones.

The approved Environmental Document and Project Report (PA&ED documents) included studies and analysis for construction of both the full project limits (SR 237 to SR 84) and an initial segment (south of Auto Mall Parkway to SR 84). The initial segment (Phase 1 project) is focused on providing immediate operational benefits within currently available funding. During development of the Phase 1 project, staff identified and implemented several geometric refinements to reduce costs and minimize environmental impacts.

In the interest of expediting important improvements for the public, Alameda CTC and Caltrans have agreed to incorporate a pavement rehabilitation project into the Phase 1 project.

Civil construction began on March 5, 2018 after the approval of the required initial submittals. The following is a detailed discussion of work in progress and/or upcoming major tasks.

Recently Completed Project activities in October

- Sheridan Road Overcrossing falsework complete

- Median Barrier Construction in Segment D complete
- Guardrail installation in Segment A complete

Upcoming Project Activities

- Visible work activities for the three months ahead will include:
 - Construction of PG&E Pedestals nearing completion
 - Continue progress on the widening at Calaveras Bridge; superstructure work underway.
 - Continue progress on the retaining wall on northbound I-680 between Paseo Padre Parkway and Palm Avenue.
 - Continue progress on the retaining wall on northbound I-680 between Vargas Road and Sheridan Road off-ramps.
 - Continue progress at the Sheridan Road Overcrossing Bridge replacement; bridge stem and soffit work underway.
 - Continue pile driving for retaining wall along northbound I-680 from north of the Alameda Creek Bridge Undercrossing to the Calaveras Road off-ramp
 - Continue placement for median lights in Segment A
 - Continue progress for completion of median barrier in Segment A
 - Construction of Overhead sign foundations in the median starting from the southern end of the project and proceeding northerly.
- Preliminary tolling zone configuration and associated signing locations determined. Continue to finalize configuration of tolling facility (on-going).
- Continue preliminary toll system design and coordinate with civil design for construction staging/sequencing (on-going).
- Continue to coordinate with PG&E, AT&T and Comcast regarding power and communication service connection needs (on-going).

Fiscal Impact: There is no fiscal impact associated with the requested action.

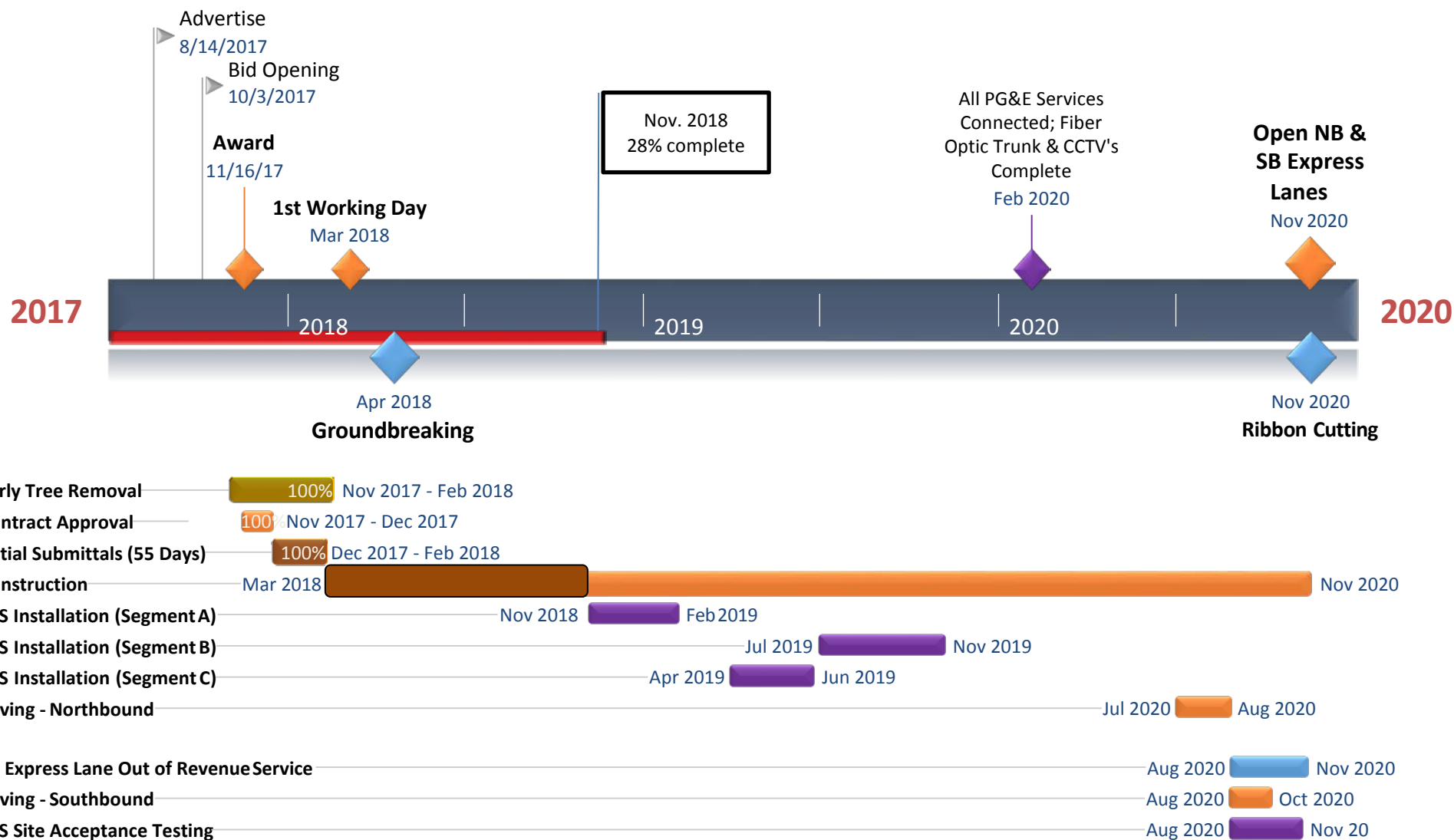
Attachment:

- A. I-680 Sunol Express Lanes Progress Update

This page intentionally left blank

I-680 Sunol Express Lanes

Progress Update: November 2018



This page intentionally left blank



Memorandum

5.3

1111 Broadway, Suite 800, Oakland, CA 94607

• 510.208.7400

• www.AlamedaCTC.org

DATE: November 13, 2018

TO: I-680 Sunol Express Lane Joint Powers Authority

FROM: Patricia Reavey, Deputy Executive Director of Finance and Administration

SUBJECT: I-680 Sunol Smart Carpool Lane FY2018-19 First Quarter Financial Report

Recommendation

It is recommended that the Authority approve the I-680 Sunol Smart Carpool Lane FY2018-19 First Quarter Financial Report.

Summary

This financial report summarizes revenues and expenses related to the I-680 Sunol Smart Carpool Lane for the fiscal year through September 30, 2018. Net toll and other revenue was \$765,302 or 17.7 percent more than projected revenues through the first quarter of FY2018-19. Operating expenses through the first quarter totaled \$404,896, or 37.7 percent less than budget; mostly related to operations and maintenance costs and a toll revenue forecasting special project accounted for in the budget, which has not yet begun. These variances together result in an increase to net position of \$360,406. This positive variance is mostly due to actual toll revenue coming in higher and expenses coming in lower than projections. As of September 30, 2018, the I-680 Sunol Smart Carpool Lane had cash and investments totaling \$5.25 million.

Background

The I-680 Sunol Smart Carpool Lane JPA is in a strong position compared to budget after the first quarter of the fiscal year and remains sustainable. The FY2018-19 operating budget approved by the I-680 Sunol Smart Carpool Lane Board in May 2018 includes \$2.6 million of toll revenues which is offset by \$2.77 million of expenses, including depreciation, resulting in a decrease of \$166,372 to projected net position for the year. The projected net position at the end of FY2018-19 is \$4,593,032 comprised of \$1,301,086 invested in capital assets, \$1,500,000 reserved for maintenance, \$1,500,000 reserved for operational risk, and \$291,946 unrestricted. There was no capital budget proposed for FY2018-19.

Fiscal Impact: There is no fiscal impact associated with the approval of this item.

Attachment:

- A. I-680 Sunol Smart Carpool Lane Revenues/Expenditures as of September 30, 2018

I-680 SUNOL SMART CARPOOL LANE
Statement of Operating Revenues and Expenses
As of September 30, 2018

	<u>YTD Actuals</u>	<u>YTD Budget</u>	<u>% Used</u>	<u>Favorable / (Unfavorable) Variance</u>
Beginning Net Position, June 30, 2018	\$ 5,934,307			
<u>OPERATING REVENUES</u>				
Toll Revenue	750,627	650,000	115.5%	100,627
Interest Income	14,675	-	0.0%	14,675
Total Operating Revenues:	<u>765,302</u>	<u>650,000</u>	<u>117.7%</u>	<u>115,302</u>
<u>OPERATING EXPENSES</u>				
Operations and Maintenance	87,000	187,500	46.4%	100,500
Revenue Collection Fees	73,687	81,250	90.7%	7,563
Alameda CTC Operations and Management	70,118	75,000	93.5%	4,882
Enforcement	105,000	106,250	98.8%	1,250
Express Lane Operations Monitoring Technicians	22,236	30,000	74.1%	7,764
IT Support	9,675	21,250	45.5%	11,575
Utilities	12,554	12,500	100.4%	(54)
Roadway Maintenance	-	6,250	0.0%	6,250
Alameda CTC Administration	8,886	13,750	64.6%	4,864
Insurance	9,591	10,000	95.9%	409
Legal Fees	4,212	2,500	168.5%	(1,712)
Miscellaneous	1,938	6,250	31.0%	4,312
Special Project - Toll Revenue Forecasting	-	82,500	0.0%	82,500
Contingency	-	15,000	0.0%	15,000
Total Operating Expenses:	<u>404,896</u>	<u>650,000</u>	<u>62.3%</u>	<u>245,104</u>
Operating Surplus (Deficit)	<u>360,406</u>	<u>-</u>		
<u>Net Position</u>				
Invested in Capital Assets	1,466,840			
Maintenance Reserve	1,500,000			
Operational Risk Reserve	1,500,000			
Unrestricted Net position	1,827,873			
Total Net Position as of September 30, 2018	<u>\$ 6,294,713</u>			

This page intentionally left blank