



SEPTEMBER 2015

# EXECUTIVE DIRECTOR'S REPORT

## Director's Message

As Alameda CTC moves into fall, our work continues at a rapid pace with a focus on the delivery of critical transportation projects and programs. On September 20, 2015, we celebrated the 5th anniversary of the [I-680 Southbound Express Lane](#). Since its first year of operation, nearly 2.9 million trips have been taken in the lane, which helps maximize the efficiency of our existing highway infrastructure and provides congestion relief (read more in "Project Updates"). To complement the I-680 Southbound Express Lane, Alameda CTC engineers and project managers are working to accelerate the delivery of the I-680 Northbound Express Lane to bring early traffic relief within this heavily-used regional corridor.

In August and September, for the 22-mile Interstate 80 Smart Corridor Project, Alameda CTC in partnership with Caltrans completed several live-system tests of the many cutting-edge devices and technology installed on the I-80 corridor prior to full operation anticipated in December of this

*Director's Message cont'd on page 2*

## TABLE OF CONTENTS

- 1 **Transportation Planning Updates**  
Alameda Countywide Transportation Plan  
**Policy News**  
CWC Annual Report
- 2 **Project Updates**  
I-680 Express Lane celebrates 5th anniversary!
- 3 **Finance Updates**  
New financial database  
**Programming Updates**  
Annual Program Compliance Workshop
- 4 **Outreach and Events**  
September and October activities  
**Committee Activities**  
September advisory committee highlights  
**Other News**  
International Walk and Roll to School Day

## Transportation Planning Updates

### Alameda Countywide Transportation Plan

The 2016 Alameda Countywide Transportation Plan (CTP) update will result in a performance-based long-range plan through 2040 for Alameda County's multimodal transportation network. In June 2015, Alameda CTC issued a call for projects for transportation programs and projects to include in the 2016 CTP. Alameda CTC reviewed over 300 submissions from public agencies totaling over \$24 billion in total project costs, including the following types of programs and projects:

- Arterials
- Bicycle and pedestrian
- Countywide local street, intersection and major corridor improvements
- Freight and rail improvements
- Highways
- Trails
- Transit
- Transit oriented development

This initial review marks the beginning of an objective process to identify quantitative and qualitative benefits of investment packages for projects, programs and policies for inclusion in the 2016 CTP.

### Regional Transportation Plan improvements

Scheduled for adoption by the Commission in June 2016, the CTP will also inform the Metropolitan Transportation Commission's (MTC) Regional Transportation Plan, Plan Bay Area 2040, and will contain a number of regional improvements for:

- Goods movement
- Highways (including managed lanes and interchange improvements)
- Trails and other pedestrian and bicycle improvements
- Transit

These projects will be submitted to MTC in September as draft and in October as final. Visit the Alameda CTC website for more information on the [Countywide Transportation Plan](#).

## Policy News

### CWC Annual Report

In August 2015, the Citizens Watchdog Committee, now called the Independent Watchdog Committee, released its [13th Annual Report to the Public](#). For the 13th year in a row, the report confirms that Alameda CTC's audited income and expenditures were in compliance with specific caps, and the auditors identified no accounting concerns.

The report covers fiscal year 2013-2014 expenditures and CWC activities through June 2015, as well as provides an update on the delivery of voter-approved programs and projects funded by Measure B, Alameda County's half-cent sales tax for transportation improvements approved by 81.5 percent of voters in 2000.

The [13th CWC Annual Report](#) and [Executive Summary in English, Chinese and Spanish](#) are available to the public on the Alameda CTC website. More information about the [Independent Watchdog Committee](#) is available on the website. Hard copies of the report are available by request.

## Director's Message cont'd

year. We are also working to complete construction of the 14-mile express lanes on the I-580 Corridor, to allow for full operation of this facility in the next few months.

At the same time, agency planners received, carefully reviewed and evaluated over 300 project applications submitted by local jurisdictions for inclusion in the 2017 Regional Transportation Plan, as one of the first steps in this critical regional planning process. We are also preparing to engage the community and the Commission on the continuing development of our own Countywide Long-Range Transportation Plan and Comprehensive Investment Plan. Read more about the next steps in the process in "Transportation Planning Updates."

Also this fall, Alameda CTC is presenting to the Commission a programming recommendation for the fiscal year 2015-2016 Transportation Fund for Clean Air (TFCA) Program that will fund projects and programs that cost-effectively achieve emission reductions. Read more about the TFCA program and the annual compliance reporting process in "Programming Updates."

Alameda CTC recently released the [Citizens Watchdog Committee 13th Annual Report to the Public](#), which confirms for the 13th year in a row that Alameda CTC received a clean audit. The report from the former CWC, now called the [Independent Watchdog Committee](#), highlights expenditures on programs and projects as well as committee activities (see "Policy News").

The finance department has been busy implementing a new financial database that is able to track information in a more detailed manner and generate more accurate and timely reports (see "Finance Updates").

Lastly, the kids are back to school just in time for International Walk and Roll Day (See "Other News"), and Alameda CTC is back to its regular [public meeting schedule](#) this month. For information about advisory committee activities, see page 4.

Sincerely,

ARTHUR L. DAO  
Executive Director  
Alameda County Transportation Commission

## Project Updates

### I-680 Express Lane celebrates 5th anniversary!



September 20, 2015 marks the fifth anniversary of the opening of the [I-680 Southbound Express Lane](#). This 14-mile pilot express lane was the first in Northern California to harness emerging technologies to help maximize the efficiency of existing highway infrastructure.

The facility is located on southbound I-680 from SR 84 south of Pleasanton to SR 237 in Milpitas, crossing the Sunol Grade. This major commute corridor connects the agriculturally rich Central Valley and eastern Alameda County with the thriving economic centers in Southern Alameda County and Silicon Valley.

### Lane results in economic growth

Over the last five years, the Bay Area has helped lead the nation's economic recovery. Investments in transportation and the successful implementation and operation of the express lanes have supported the movement of goods and job growth, locally and in the greater Bay Area.

The I-680 Express Lane has reported a 119 percent increase in average daily trips from the first to the fifth year of operation. Nearly 2.95 million toll-paying trips were taken in the lane since it opened in 2010, generating \$7.06 million. Monday, September 14, 2015 marked the express lanes' busiest day thus far on record with 4,155 total trips.

### New express lanes on I-580

The new I-580 Express Lanes will be the next express lanes in Alameda County. Considering the success of the I-680 Express Lane, Alameda CTC looks forward to providing similar benefits and congestion relief to motorists traveling through the I-580 corridor.

Visit [Alameda CTC's Express Lanes web pages](#) or call our new Express Lanes Hotline at 510-208-7499 to learn more about the I-580 Express Lanes.

### I-680 Express Lane Fast Facts

#### 5-year Benchmark

**Toll price range:** \$0.30 to \$7.50

**Average toll price since opening:** \$1.94

**Average daily toll trips in year one:** 1,410

**Average daily toll trips in year five:** 3,087

#### Benefits: Improved mobility and enhanced travel options

- Making use of available space in existing carpool lanes moves more people.
- Improving operations in existing carpool lanes through better enforcement and strategies prevents lane slowdowns.
- Giving everyone the choice lets drivers carpool for free or pay for a more reliable trip when it really matters.
- Filling gaps in the carpool lane system encourages more carpools, vanpools and bus trips.



## Finance Updates

### New financial database

Over the past couple of months, the finance team has worked to finalize the implementation of a new financial database that has more robust capabilities than Alameda CTC's previous system. This new financial database is able to track financial information more efficiently and generate more accurate and timely reports, which will help to ensure that all Alameda CTC funding including Measure B, Measure BB, Vehicle Registration Fees and other outside grant funding continues to be managed in a diligent manner. This new financial database went live at the agency on July 1.

In addition, the finance team has been working to close out the 2014-15 fiscal year to prepare for the independent financial audit which began August 31.

## Programming Updates

### Annual Program Compliance Workshop

Recipients of Measure B, Measure BB and Vehicle Registration Fee (VRF) direct local distribution program funds are required to submit an audited financial statement and compliance report annually to Alameda CTC. These reports describe fund expenditures for the past fiscal year and include a future implementation plan to use remaining fund balances. Alameda CTC reviews these reports to confirm that voter-approved transportation dollars support local streets and roads, bicycle and pedestrian, paratransit and public transit improvements within Alameda County.

This September, Alameda CTC held its Annual Compliance Workshop to discuss compliance policies and specific reporting requirements with the fund recipients, who will report on expenditures occurring during fiscal year 2014-15. The audited financial statements and compliance reports are due at the end of December. Refer to the [Alameda CTC website](http://www.AlamedaCTC.org) for compliance reporting information and past reports.

### Contracting opportunities

Alameda CTC recently awarded a contract for the plans, specifications and estimates phase for the I-680 Sunol Express Lanes – Northbound – Grimmer to SR 84 (Phase 1 Modified) project.

Alameda CTC anticipates issuing solicitations for proposals for the system integration design and installation services for the I-680 Sunol Express Lanes – Northbound project; maintenance services for the East Bay Greenway project; environmental and design services for the Central Avenue Overpass Project; and overall monitoring services for elements of the Congestion Management Program. For more information, visit the [Contracting Opportunities web page](#).

### Transportation Fund for Clean Air FY2015-16 Program

Alameda CTC is responsible for annually programming 40 percent of a \$4 vehicle registration fee collected in Alameda County under the Transportation Fund for Clean Air (TFCA) Program. This program is a local fund source of the Bay



Area Air Quality Management District and provides funding for shuttle operations, traffic management systems, bicycle and pedestrian projects and alternative-fuel infrastructure.

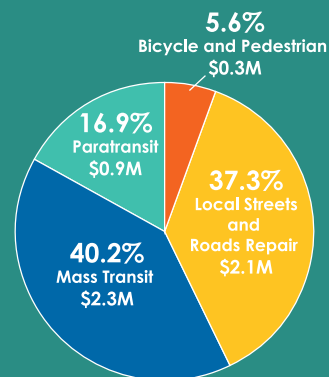
Area Air Quality Management District and provides funding for shuttle operations, traffic management systems, bicycle and pedestrian projects and alternative-fuel infrastructure.

In May 2015, Alameda CTC released a call for projects for the \$2.0 million in programming capacity available for discretionary grants. After receiving the project and program proposals, Alameda CTC reviewed them to determine funding eligibility under the TFCA program guidelines and the cost-effectiveness of achieving emission reductions. Staff will present to the Commission this month a TFCA programming recommendation of selected projects and programs that best meet the TFCA program objectives.

## Transportation Investments

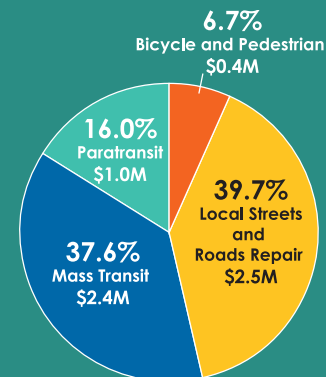
### Measure BB Program Distributions

Measure BB direct local distributions began in April 2015; over \$5.6 million was distributed in June 2015.



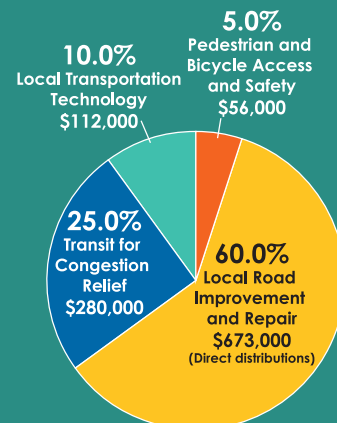
### Measure B Program Distributions

Measure B direct local distributions have totaled more than \$775.5 million since 2002. In June 2015, over \$6.3 million was distributed for four programs.



### Vehicle Registration Fee

Since 2011, Alameda CTC has distributed over \$47.3 million for local road repair; over \$1 million was collected in June 2015.



## Outreach and Events

During September and October, Alameda CTC hosts or participates in the following events:

- September 2 – 1st Wednesday Street Party in Pleasanton
- September 11 – Innovation Tri-Valley Leadership Group presentation
- September 13 – Solano Avenue Stroll in Berkeley
- September 16 – Association of Pedestrian and Bicycle Professionals (APBP) Webinar at Alameda CTC: Shared Streets, Slow Streets
- September 17 – California Marine Affairs and Navigation Conference speaking engagement
- September 19 – San Lorenzo Village Homes Association's Carnival: 70 Years a Village
- September 24 – Kaiser Permanente Oakland Medical Center Employee Transportation Fair
- September 26 – BikeMobile at Sequoia Elementary School's Bike Day
- October 3 – Senior Informational Fair in Dublin; Dublin Police Services Crime Prevention Unit's Safety Fair, including the BikeMobile
- October 6 – Senior Resource Faire at the Newark Senior Center
- October 7 – International Walk and Roll to School Day countywide
- October 10 – Ashland/Cherryland FamFest in San Leandro
- October 15-16 – 21st Annual California Transportation Foundation Transportation Education Symposium
- October 16 – Valley Industry & Commerce Association panel discussion in Southern, California
- October 21 – APBP Webinar at Alameda CTC: Tactical Urbanism
- October 26 – Paratransit Strategic Planning Workshop: Same-day Accessibility Trips
- October 27 – I-580 Express Lanes presentation to the Tracy Rotary
- October 29 – Contractors' Building Opportunities for Business/Alameda CTC Workshop in Hayward

## Other News

### International Walk and Roll to School Day

Wednesday, October 7th is a day to walk, bike, scooter or skate to celebrate [International Walk and Roll to School Day](#). Alameda County students can join the millions of students around the world walking and rolling to school for the entire first week on October. Ask your school what prizes, tools or training will be available for students and parents.

Walk and Roll Day is part of the year-round [Safe Routes to Schools](#) (SR2S) effort in Alameda County Schools. SR2S is a comprehensive approach to getting more kids walking and biking safely to school, which creates healthy neighborhoods and active families. The Alameda SR2S program is funded by Alameda County's local sales tax Measure B, regional, state and federal funds.

### Webinar: Tactical Urbanism



On Wednesday, October 21 from 12 to 1 p.m. (PST), join us for an Association of Pedestrian and Bicycle Professionals free webinar at Alameda CTC, 1111 Broadway, Suite 800. The topic is "[Tactical Urbanism](#)." Feel free to bring a brown bag lunch. Alameda CTC hosts the event and covers the registration fee, so attendance is free.

## Committee Activities

### September advisory committees



Dialysis Transportation Workshop held at Alameda CTC's office in July 2015

In September, the following advisory committees met. Highlights include:

- September 8 – The [Paratransit Technical Advisory Committee \(ParaTAC\)](#) received current Paratransit Advisory and Planning Committee (PAPCO) appointments and an update on the Hospital Discharge Transportation Service and Wheelchair Scooter Breakdown Transportation Service programs. They discussed the interactive, city-based paratransit application for Access Alameda and provided feedback on the most recent quarterly paratransit strategic planning workshop.
- September 10 – The [Alameda County Technical Advisory Committee \(ACTAC\)](#) approved the draft list of projects for Plan Bay Area and Transportation Fund for Clean Air (TFCA) extension requests. In addition, the committee received updates on the Goods Movement Plan strategy evaluation results, the FY2015-16 TFCA draft program, the Measure BB Community Development Investments Program, Alameda CTC's Contract Equity Program and an update on Cycle 2 of the One Bay Area Grant program.
- September 28 – [PAPCO](#) received an update on its bylaws and the Paratransit Gap Grant Cycle 5 progress reports. The committee also had an opportunity to discuss the most recent quarterly paratransit strategic planning workshop at Alameda CTC on July 27.