

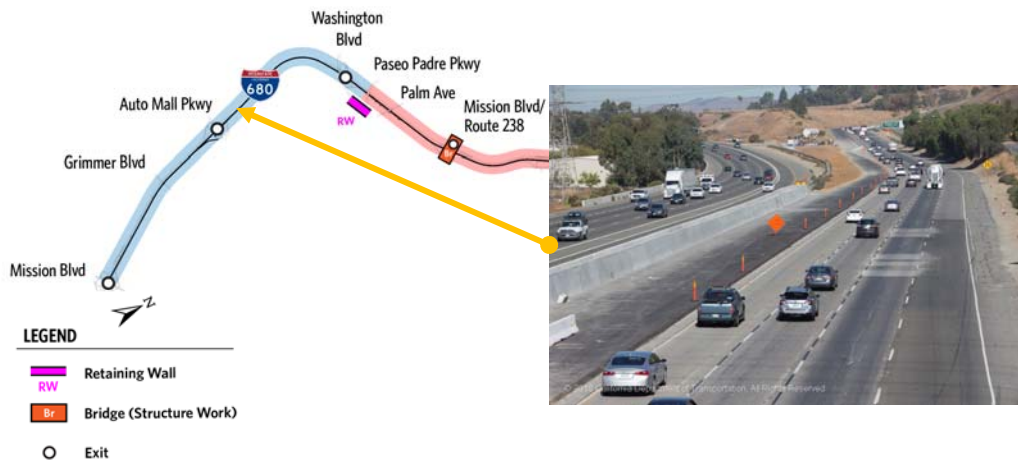
I-680 Sunol Express Lanes

Construction Phase



I-680 Sunol Express Lanes - Segment A Photos

Construction Phase

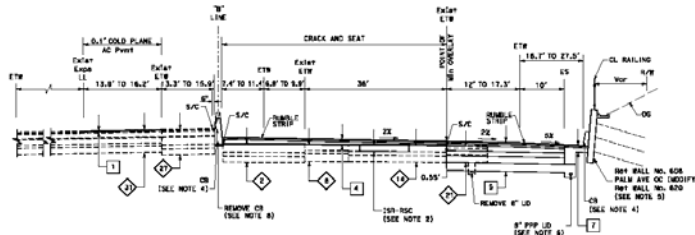


I-680 Sunol Express Lanes - Segment B Photos

Construction Phase



- LEGEND**
- Retaining Wall
 - Bridge (Structure Work)
 - Exit



I-680 Sunol Express Lanes - Segment B Photos

Construction Phase



- LEGEND**
- Retaining Wall
 - Bridge (Structure Work)
 - Exit

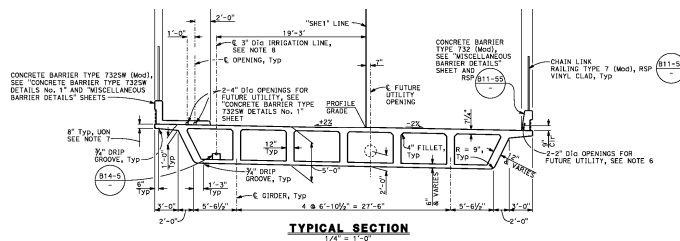


I-680 Sunol Express Lanes - Sheridan Road Overcrossing

Construction Phase

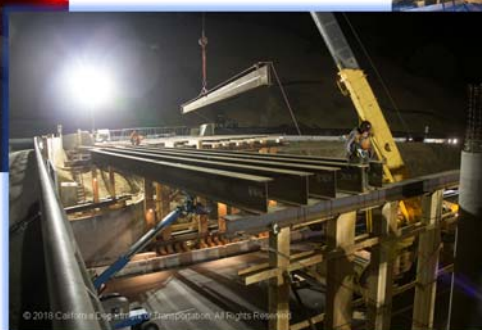


- Old Bridge was constructed in 1963
- New Bridge has a minimum 24'-5" Clearance



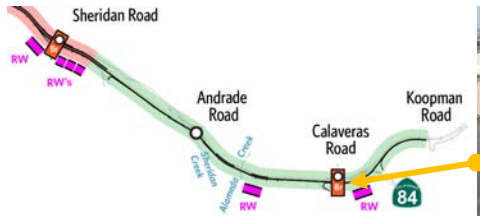
I-680 Sunol Express Lanes - Sheridan Road Overcrossing

Construction Phase

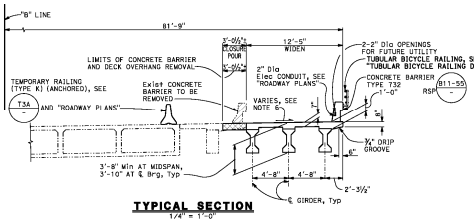
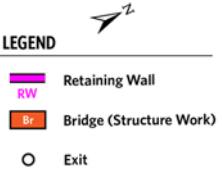


I-680 Sunol Express Lanes - Segment C Photos

Construction Phase



Calaveras Road Bridge Widening Deck Pour



I-680 Sunol Express Lanes - Retaining Walls

Construction Phase

- 9 Retaining Walls
- Combined Length of walls Approx. 9,600'
- Concrete for Retaining Walls alone is 5.4% of construction dollars



Soldier Pile Wall in progress



Soil Nail Wall Construction



Retaining Wall on Pile Footing

This page intentionally left blank