

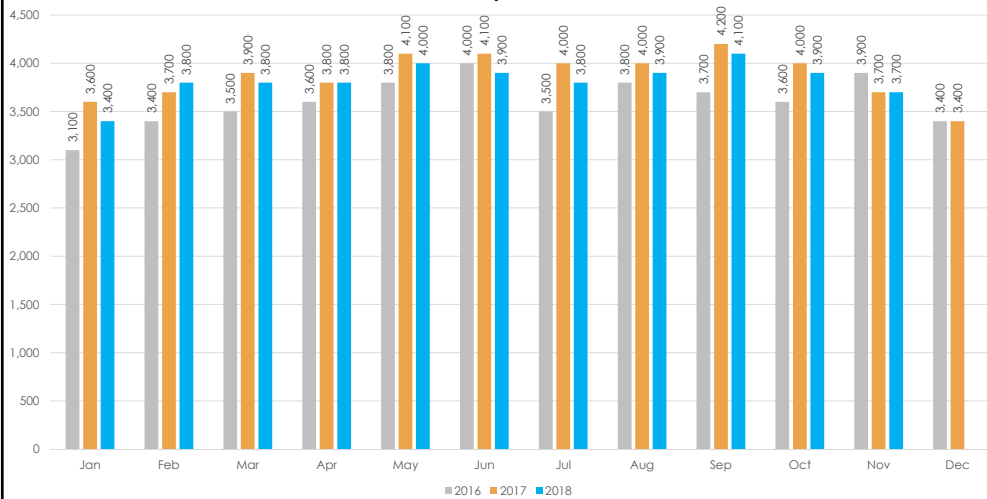


ALAMEDA COUNTY TRANSPORTATION COMMISSION
**I-680 Sunol Express Lane
 Operations Update**



I-680 Sunol Smart Carpool Lane Joint Powers Authority (Sunol JPA)
 Ashley Tam, Associate Transportation Engineer
 January 14, 2019

I-680 Sunol EL Average Daily Toll Trips
 January 2016 – November 2018

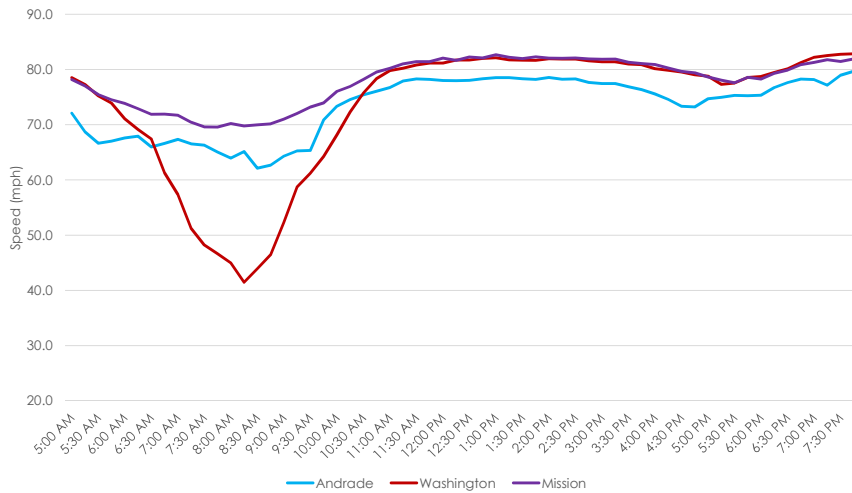


**73,000
 Toll trips
 in
 November**



I-680 Sunol Corridor Average Speed Graph

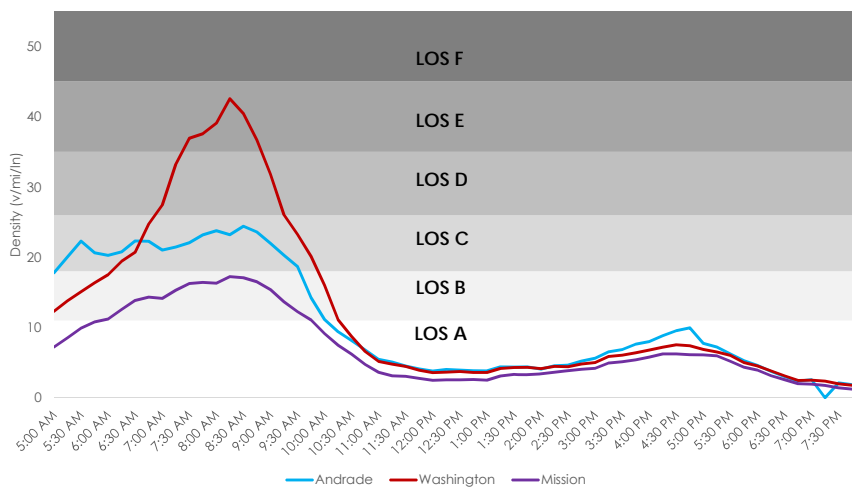
Monday- Friday, October and November 2018



I-680 Sunol Express Lane Operations Update

I-680 Sunol Corridor Average Density Graph

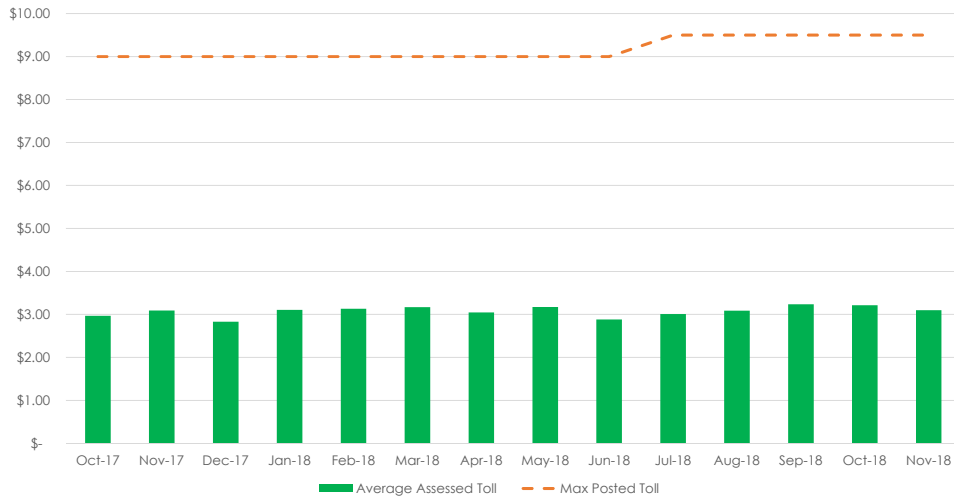
Monday- Friday, October and November 2018



I-680 Sunol Express Lane Operations Update

I-680 Sunol Historical Toll Rate

October 2017 – November 2018



\$9.50 Max Toll

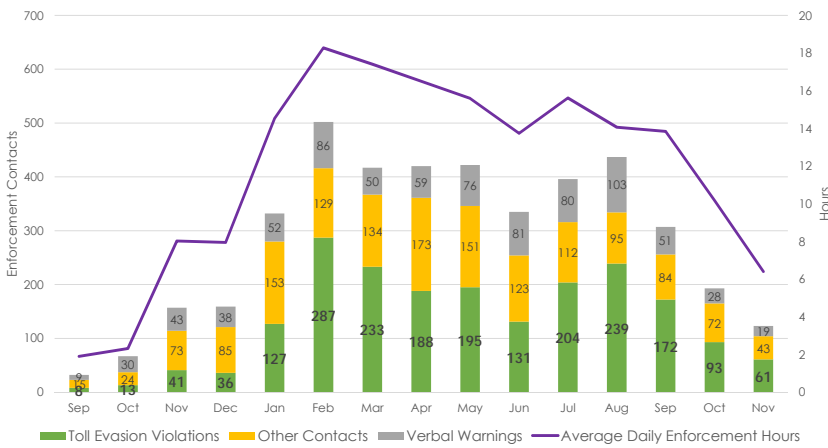
Percent paying max toll : 2.41%

\$3.10 average assessed toll



I-680 Sunol CHP Enforcement Stats

September 2017 – November 2018



Average monthly cost for CHP in 2018: \$32,000

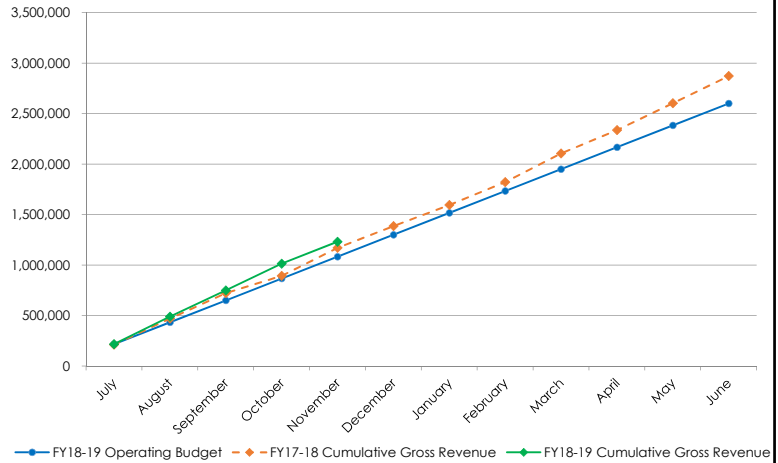
The average cost for a CHP contact in 2018 is \$79



I-680 Sunol EL Revenue: Estimated Gross vs. Forecasted

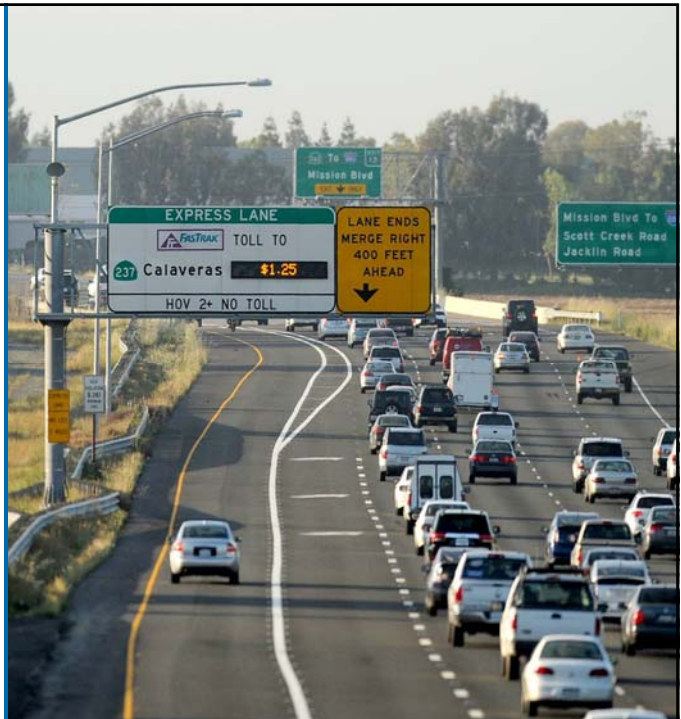
Cumulative Revenue in FY2018-19
(July - November 2018)

Estimated Gross Revenue	\$ 1,230,000
Forecast Budget	\$ 1,080,000



Questions?

For more information, visit
www.AlamedaCTC.org





Thank You

For more information, visit
www.AlamedaCTC.org

Alameda County Transportation Commission • 1111 Broadway, Suite 800
Oakland, CA 94607 • 510.208.7400

This page intentionally left blank